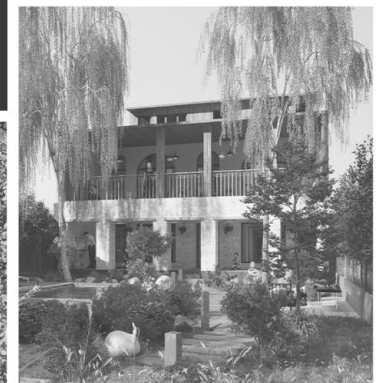


P O R T F O L I O

Farzad Ghaffari & Associate Studio

WELCOME TO OUR PORFOLIO



About us

02

Project one

03

SHAGHAYEGH VILLA
Constructed
2020

Project Two

06

BAMDAD RESIDENTIAL
Constructed
2018

Project Three

09

KOOHYAR RESIDENTIAL TOWER
Under Construction
2018

Project Four

12

VILLA LADAN
Under Construction
2022

Project Five

15

KHORDAD COMPLEX
Under Construction
2021

Project Six

18

SHAHAN COMPLEX
Under Construction
2022

Project Seven

21

HASANAKDAR VILLA
Under Construction
2021

Project Eighth

24

DOUBLE TREE COMPLEX
Under Construction
2020

Project Nine

27

TIR COMPLEX
Under Construction
2022

Project Ten

30

TABIAT RESIDENTIAL TOWER
Under Construction
2021

Project Eileven

33

SIDE PARK APARTMENT
Under Construction
2023

Project Twelve

36

AFTAB RESIDENTIAL COMPLEX
Under Construction
2020

Project Thirteen

39

BARCODE COMMERICAL COMPLEX
Under Construction
2021

Project Thirteen

42

ARVAN COMPLEX
Under Construction
2020



SHAGHAYEGH VILLA

📍 Motel Qo, Iran

📏 500 smq

📅 2020

✅ Finished

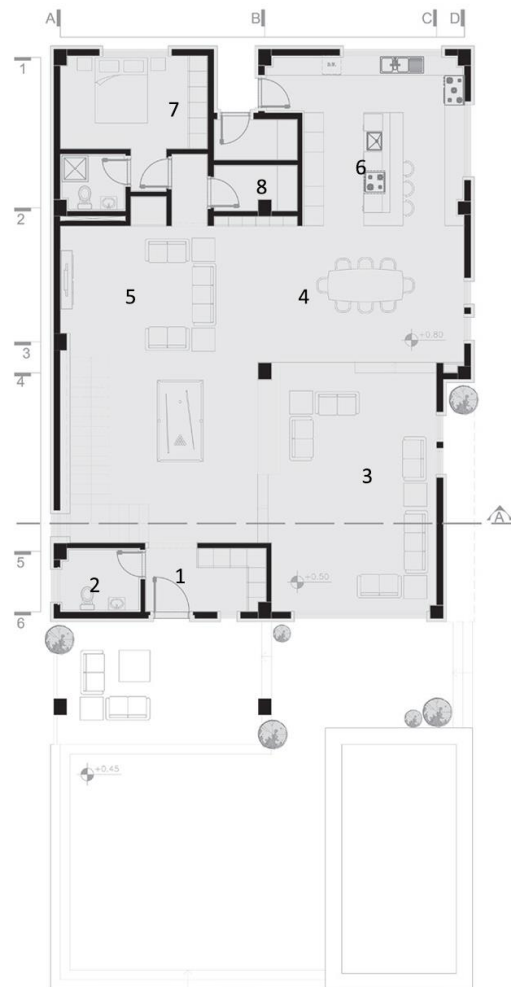
Architect :Farzad Ghaffari, Reza Ganjei

Construction : Pamchal Group

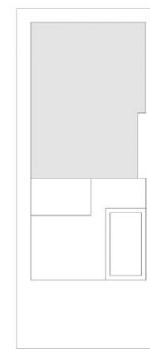
Design team:Hossein Damirchi, Homa Fallah, Samira Hazer,
Vida Hassan nia, Mobina Hizaji, Neelanoosh Kandakatla,
Negar Hasanizadeh

Structure Design: Eng. Farahani

Facility Design: Eng. Zahiri



Ground Floor Plan



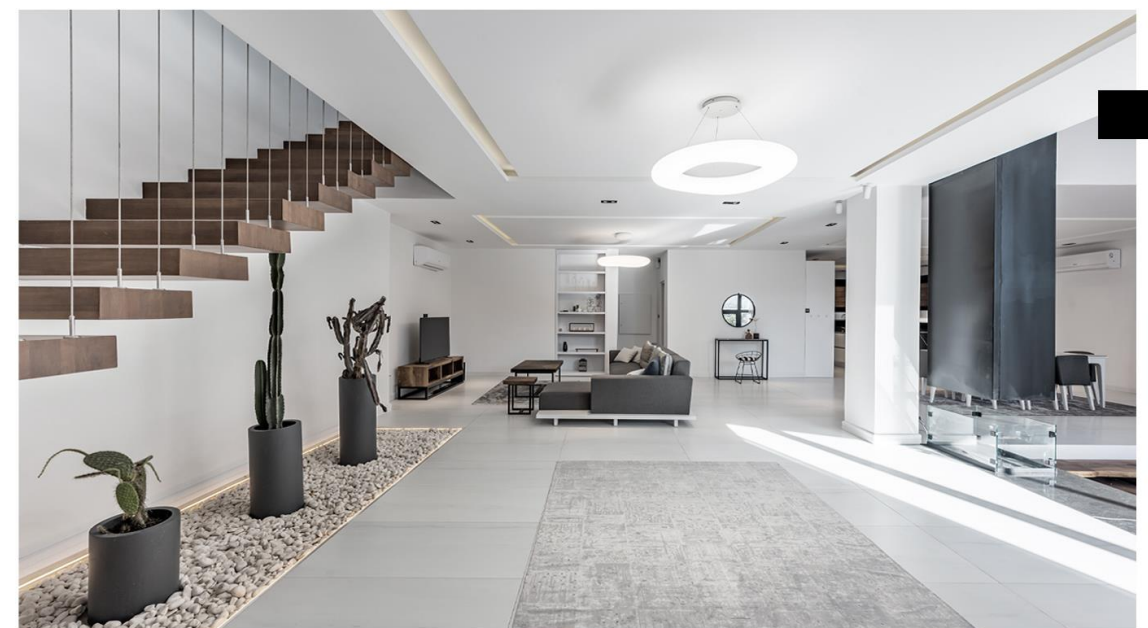
key plan

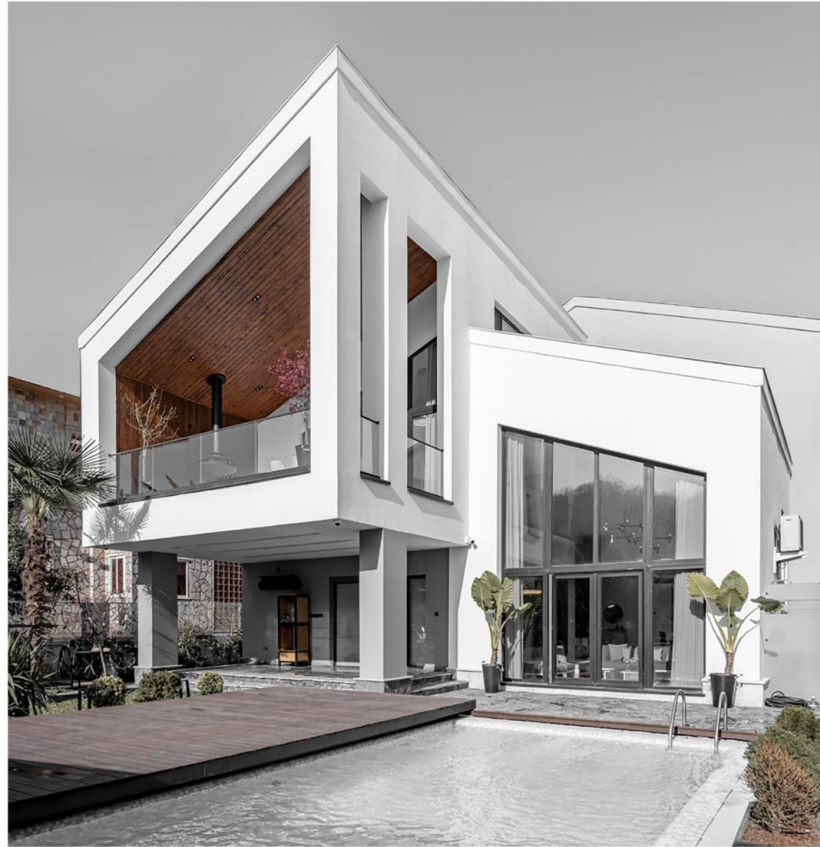
- N
1. Entrance
 2. WC
 3. Livingroom
 4. Dining Room
 5. Tv Room
 6. Kitchen
 7. Bedroom
 8. Store



In SHAGHAYEGH, The temperate and humid climatic conditions of the region have created sloping roofs, terraces and ledges to control the light, as well as openings for the natural circulation of air inside the villa.

INTERIOR VIEWS ▼



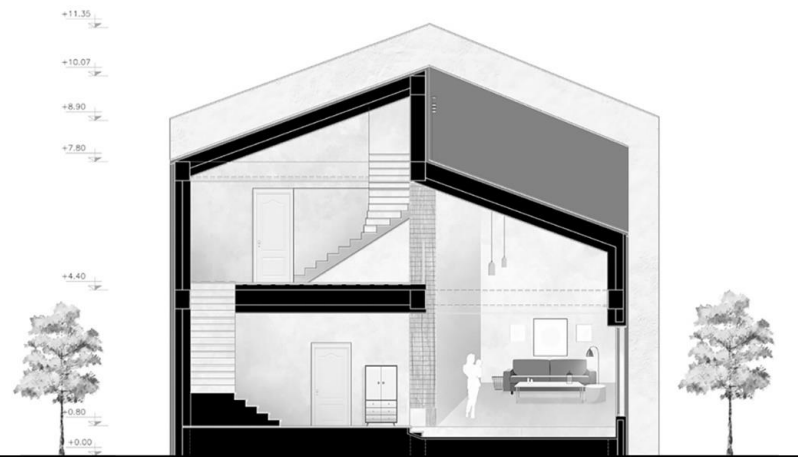


◀ EXTERNAL VIEW

The combination of modern architecture and the use of resistant materials in these specific climatic conditions of the region, moisture-resistant and sun-resistant wood is placed in front of the white facade, which is an idea taken from the wooden terraces of traditional houses in the region. In addition the opinions of the client during the design process according to their tastes and expectations from different spaces of the villa, have affected the volume and interior spaces.



South Elevation

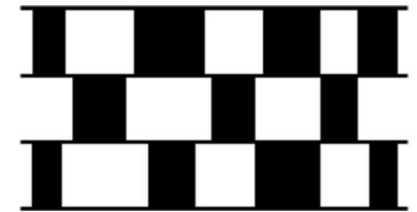
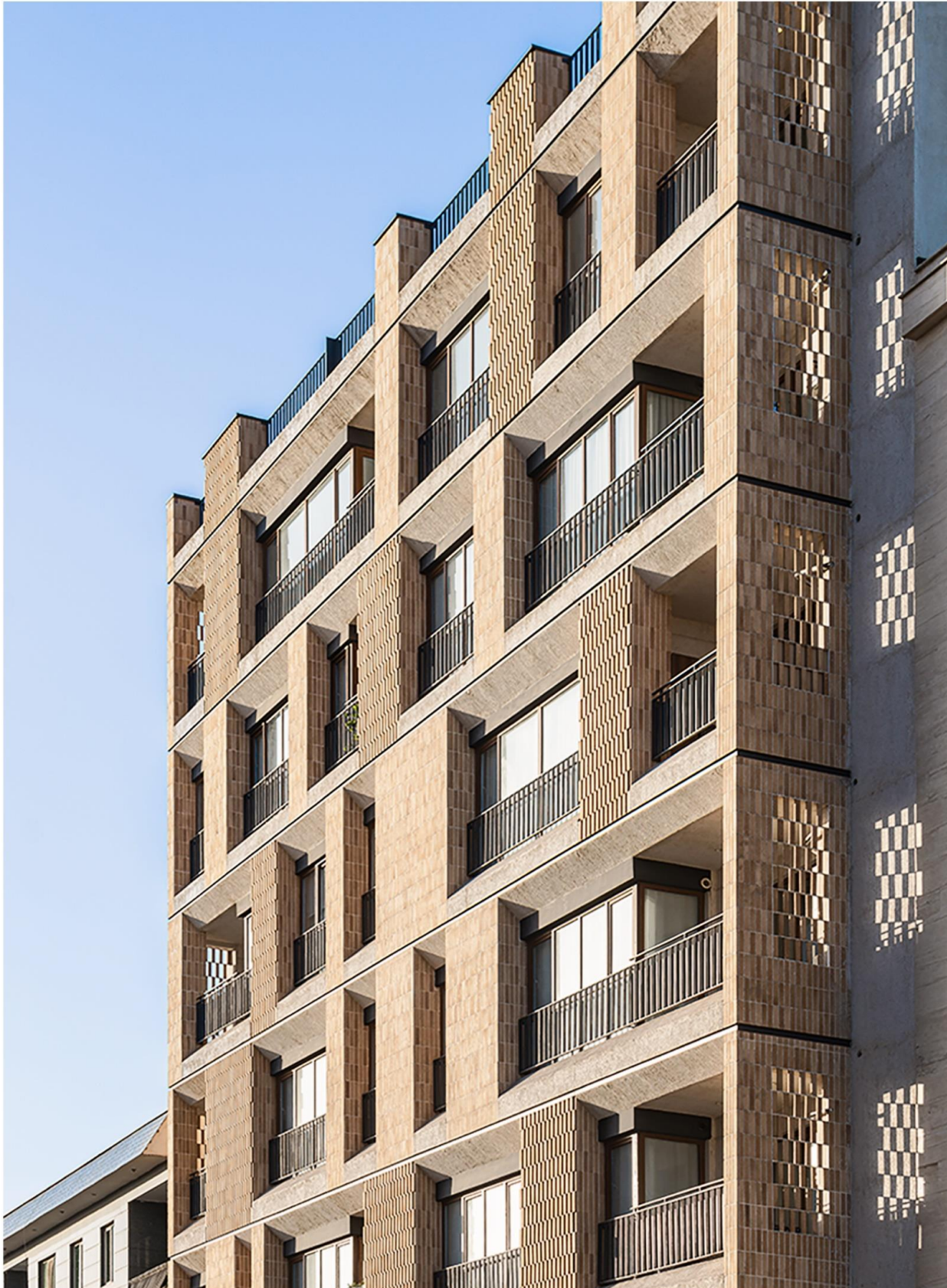


A-A Section



ELEVATION AND SECTION ▲

▲ INTERIOR VIEW



BAMDAD RESIDENTIAL BUILDING

📍 Fardis, Karaj, Iran

📏 5500 m²

📅 2018

✅ Finished

Architect : Farzad Ghaffari, Reza Ganjei, Neelanoosh Kandakatla

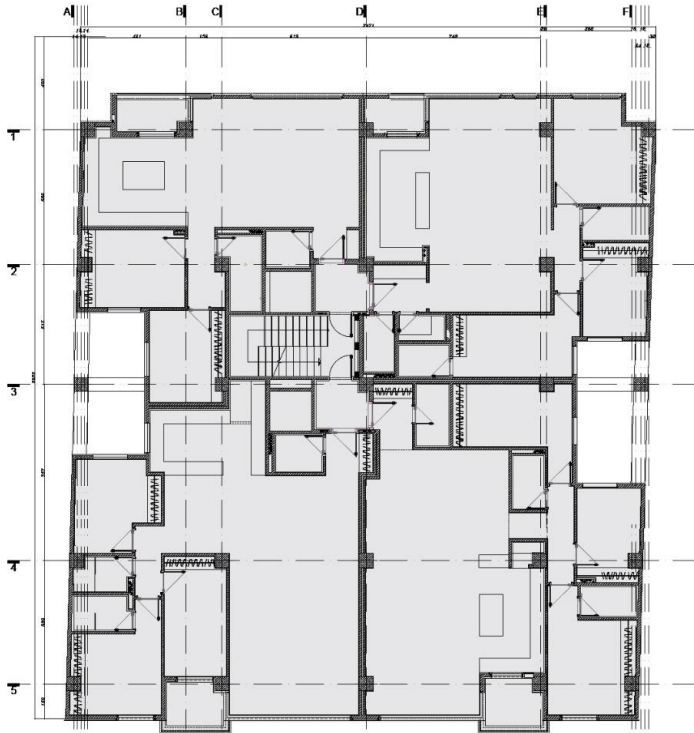
Client : Matin Manafi, Farzad Ghaffari

Construction : Mim builders

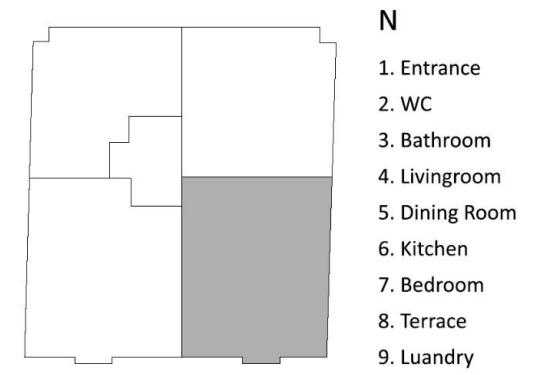
Design team: Farbod Ghaffari, Masoud Zarkar, Hossein Damirchi, Samira Hazer, Vida Hasannia, Homa Fallah, Amir Soltani, Mobina Hizaji

Structure Design: Eng. yousefi . Eng. Soltani

Facility Design: Reza Zahiri



2nd to 6th Floor Plan



Render



Photo

FLOOR PLANS ▲
INTERIOR VIEWS ▼



Render



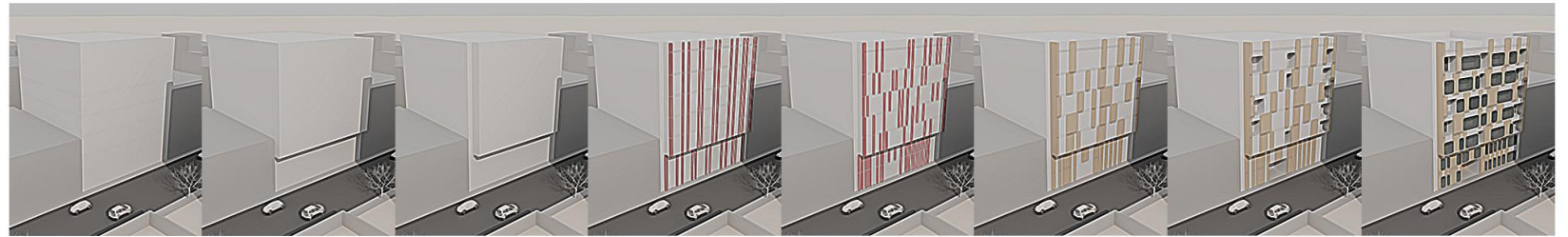
Photo



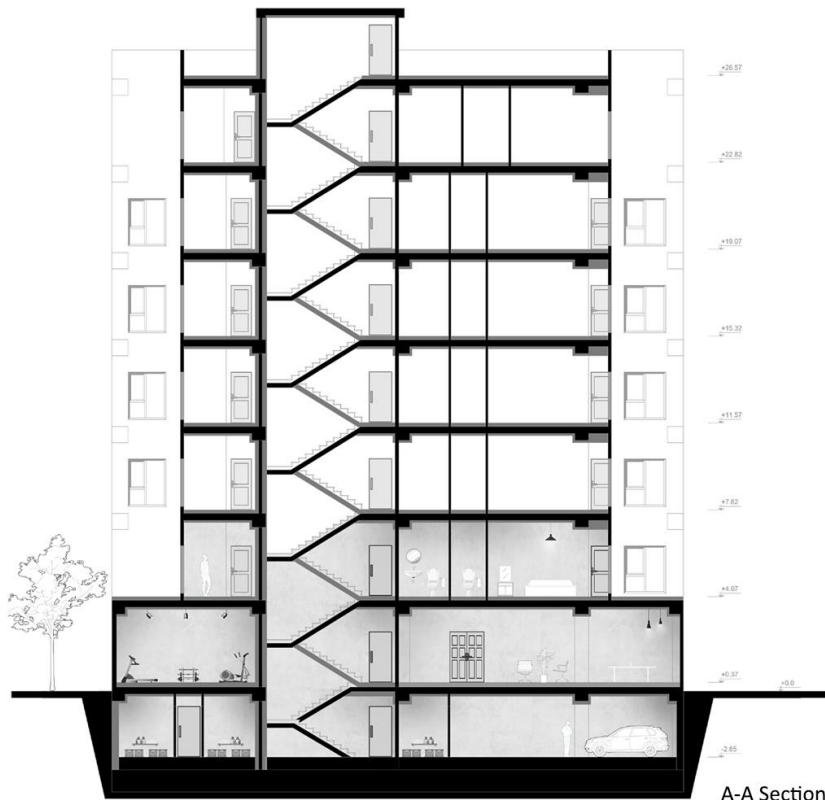
Photo



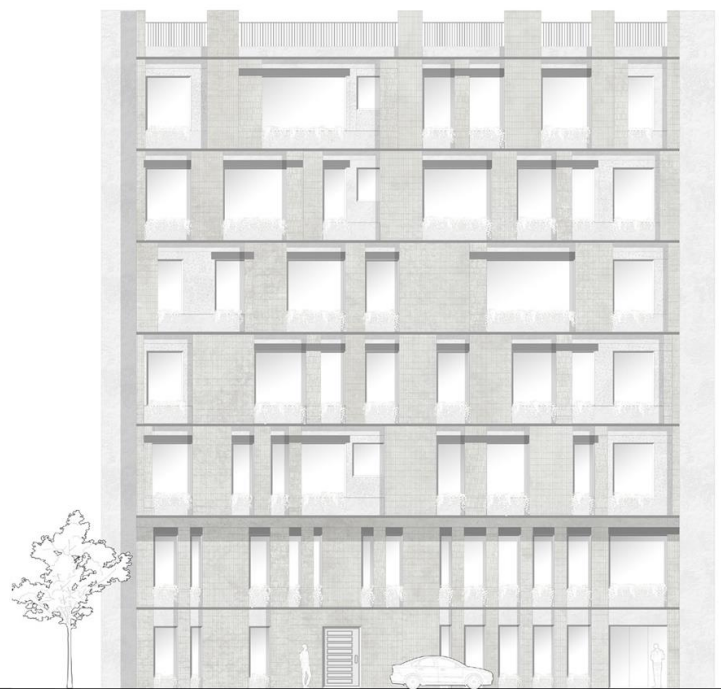
◀ EXTERNAL SOUTH VIEW



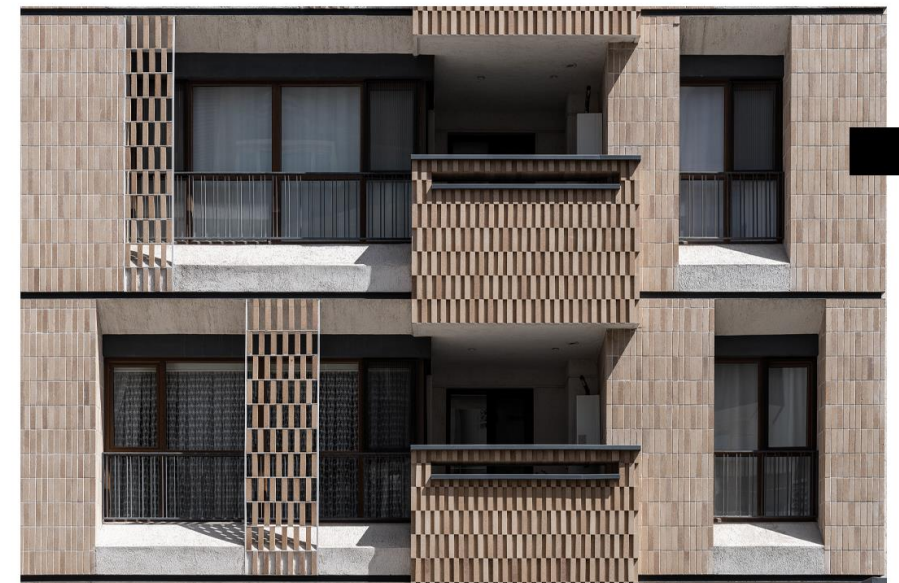
Process design



A-A Section



North Elevation



EXTERNAL VIEW ▲
ELEVATION AND SECTION ▼



KOOHYAR RESIDENTIAL TOWER

📍 Fardis, Karaj, Iran

📏 18000 m²

📅 2019

✅ Under Construction

Architect : Farzad Ghaffari, Reza Ganjei

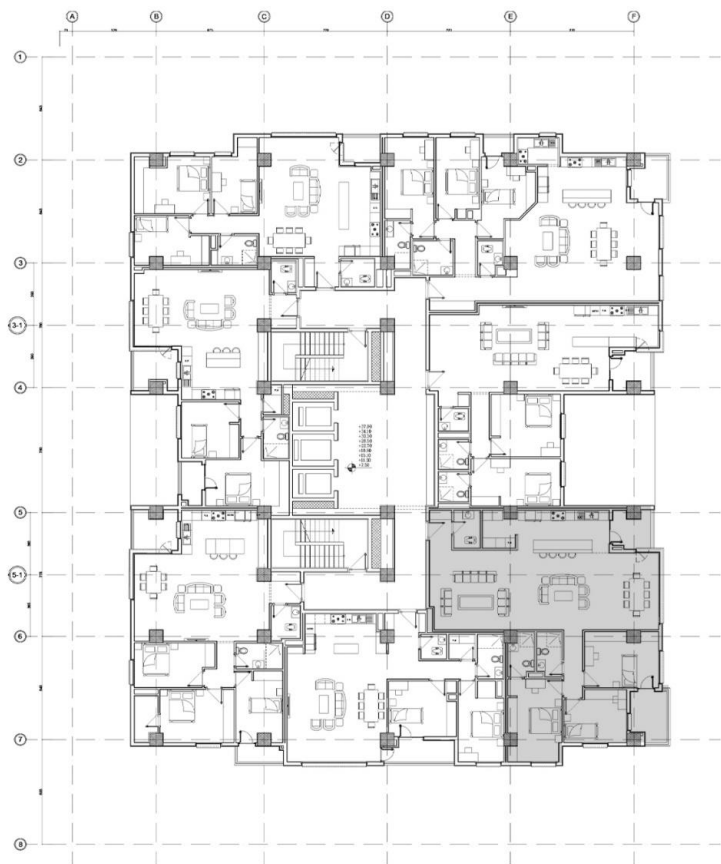
Construction : Pamchal Group

Design team: Hossein Damirchi, Vida Hassannia,
Samira Hazer, Homa Fallah, Mobina Hizaji, Neelanoosh Kandakatla

Structure Design: Eng. Yousefi, Eng. Soltani

Facility Design: Eng. Kazemi . Eng. Minaei

N



Key plan

1. Entrance
2. WC
3. Bathroom
4. Livingroom
5. Kitchen
6. Bedroom
7. Terrace



KOOHYAR residential tower

Koohyar residential tower contains 11 levels, from 1st to 10th level designed as flat units and 10th and 11th levels were designed as pent houses. The areas of residential units are from 125m² to 296m². In calculating the areas of residential units, needs of the families were assumed. The entrance of a tower represents the whole complex, therefore interior and decoration of lobby had a high importance. In this tower the lobby is about 350m² and 7m height, so the users and guests pass through a luxury space. This tower also contains a cinema, café, sport center, roof garden, 97 parking spaces and entertainment rooms for adults and children.

FLOOR PLAN ▲

INTERIOR VIEWS ▼

1st to 10th Floor (Unit 03)



1st to 10th Floor (Unit 02)

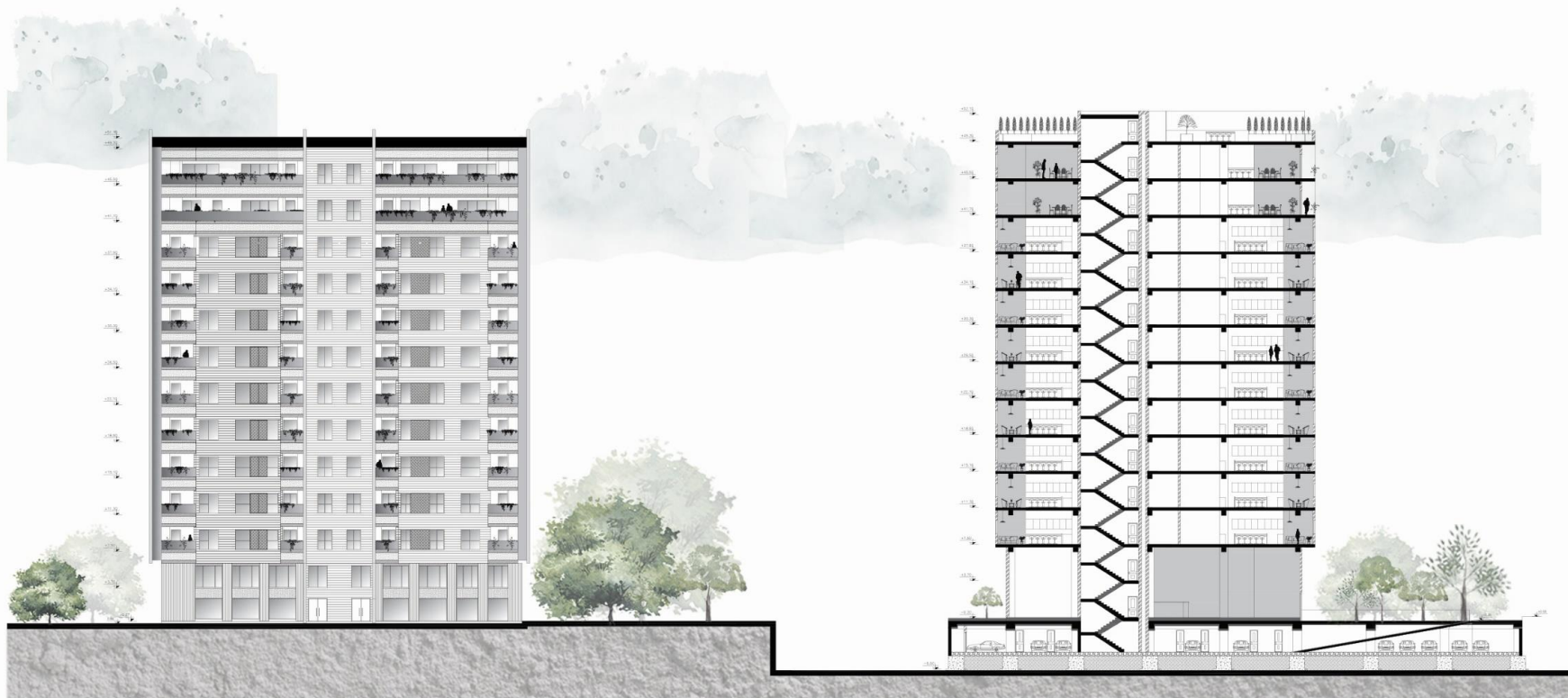




◀ **EXTERNAL VIEW**

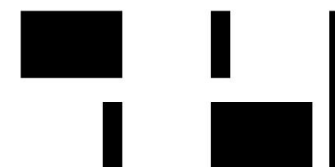


Public space



◀ **SECTION A-A**

◀◀ **NORTH VIEW**



VILLA DORAN

- 📍 Fardis, Karaj, Iran
- 📏 600 m²
- 📅 2022
- ✅ Under Construction

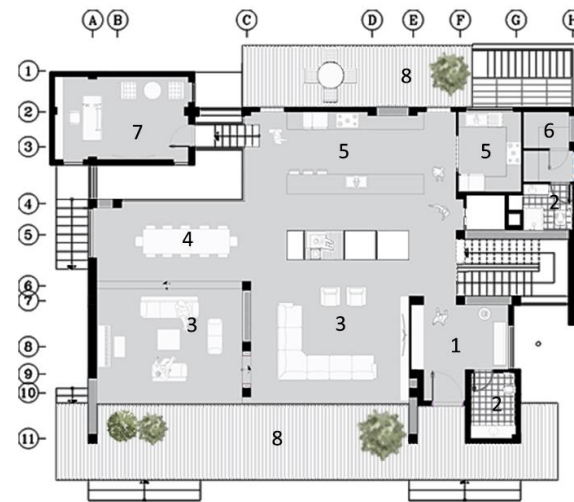
Architect : Farzad Ghaffari

Construction : Pamchal Group

Design team: Negar Hasanizadeh, Farbod Ghaffari,
Homa Fallah, Amir Soltani, Ashkan Ghiasvand, Amirali Borghei

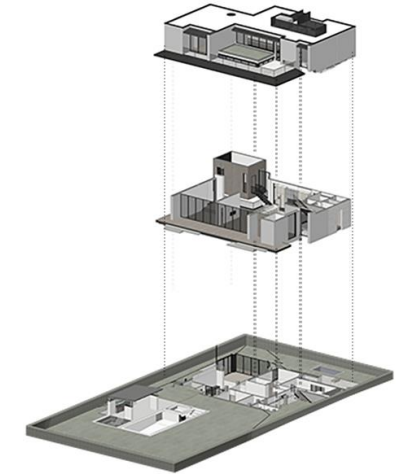
Structure Design: Eng. Tashakori . Dr. Sadeghi

Facility Design: Eng. Kazemi . Eng. Minaei



N

- | | |
|---------------|--------------------|
| 1. Entrance | 9. Bedroom |
| 2. WC | 10. Walk in closet |
| 3. Livingroom | 11. Bathroom |
| 4. Diningroom | |
| 5. Kitchen | |
| 6. Store | |
| 7. Workroom | |
| 8. Terrace | |



Ground Floor



First Floor

FLOOR PLAN ▲

INTERIOR VIEWS ▼

VILLA DORAN

"Shahrak-e Khane" or "Shahrak-e Dehkade" is one of the first examples of residential towns in karaj city. First houses here in this town are designed by "Abdol-aziz Farman-Farmaeian", a great name in modern architecture of Iran. Unfortunately new constructions and demolishes of older houses in this town has put the identity of architecture of this town in danger. In this villa, the most important factor of design was to save and re-new the first examples of first houses in this residential town. The first volume assumed as a white cube and 3 horizontal plains cuts the basic cube. This interactions defining the spaces of the house. In this level of volumetric improvement, the basic white cubic is shear walls with curtain walls in between.

Before demolition



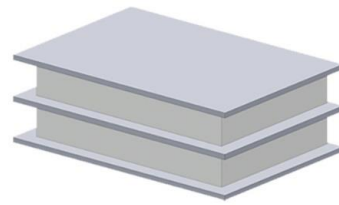
During the Construction.



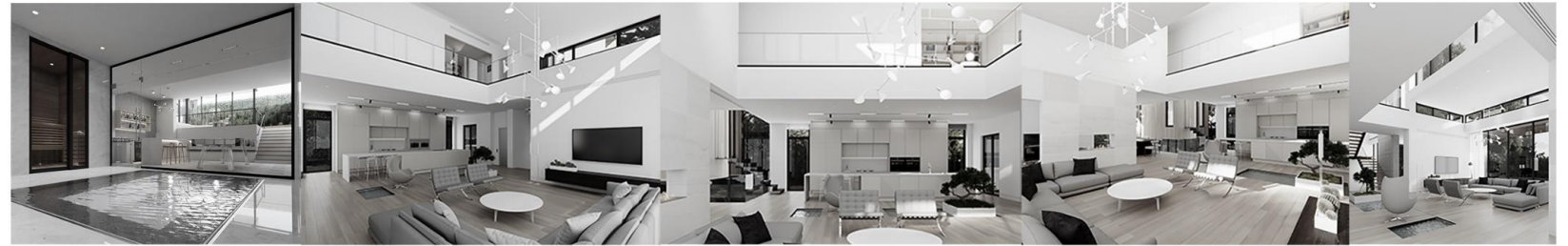
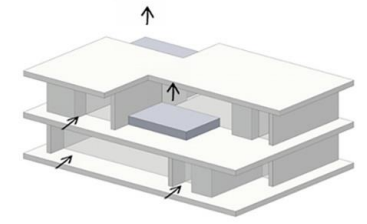
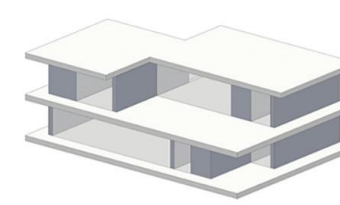
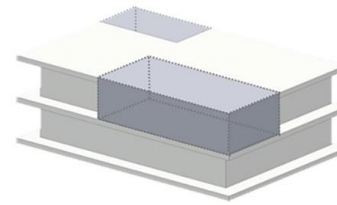
Final Structure



EXTERNAL VIEW



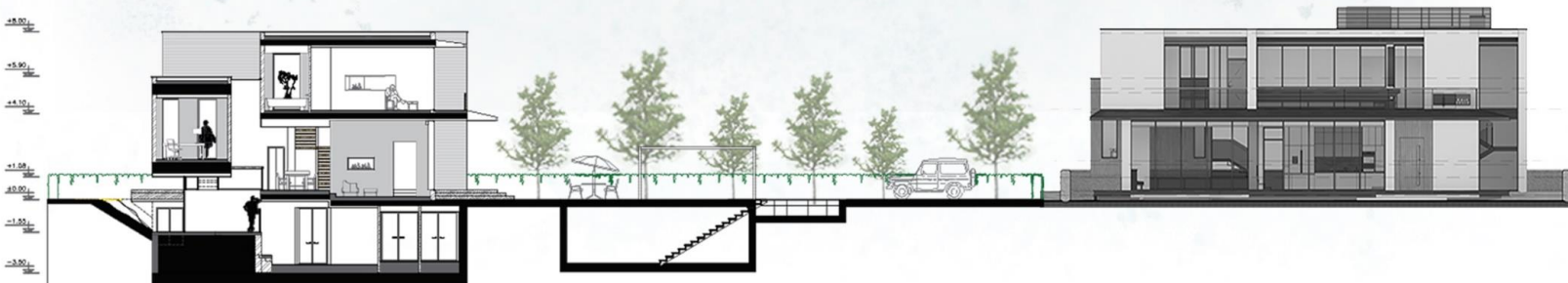
DESIGN PROCESS



EXTERNAL & INTERIOR VIEW

SECTION A-A

NORTH VIEW



Existing building in the site before demolition.
(Typical form of houses in the neighborhood)

From Analysis



Designing a two story building based on requirements provided by the client, in harmony with other houses in the neighborhood.



KHORDAD COMPLEX

📍 Fardis, Karaj, Iran

📏 2530 m²

📅 2021

✅ Under Construction

Architect : Farzad Ghaffari

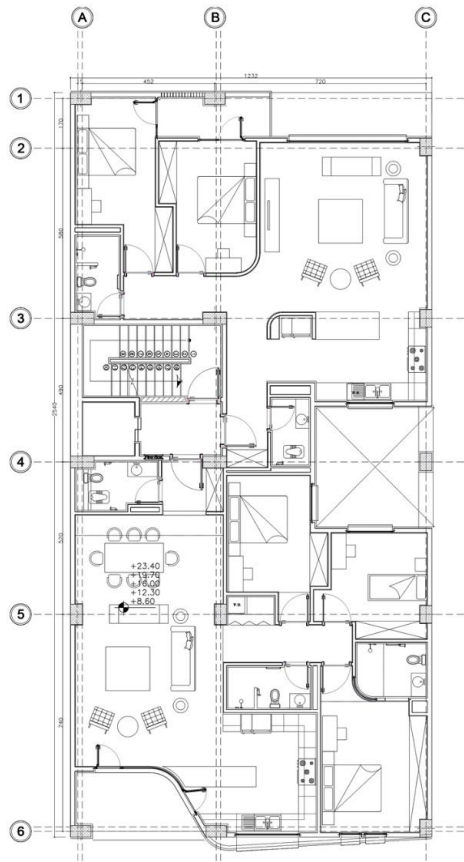
Client : Mim Builders

Construction : Mim Builders

Design team: Farbod Ghaffari, Reza Ganjei,
Negar hasanizadeh, Homa Fallah, Mobina Hizaji, Vida Hasannia,
Amir Soltani, Ashkan Ghiasvand, Amirhossein Kazemi,
Amirali Borghei

Structure Design: Eng. Farahani

Facility Design: Eng. Kazemi , Eng. Minaei



N

1. Entrance
2. WC
3. Livingroom
4. Kitchen
5. Bedroom
6. Bathroom
7. Laundry
8. Terrace



YARD PLAN ▲

KHORDAD complex

The site is located at the end of a dead-end alley and the south a great view of tall and old trees. Rules and laws disallows the building to constantly past the neighbor forward, in the other side the console was as an important factor to provide enough leaving and sale area in units. So that was how the brick curve created and turned to a signature all over the spaces and elements.

FLOOR PLAN ▲

EXTERNAL VIEWS ▼

1st to 6th





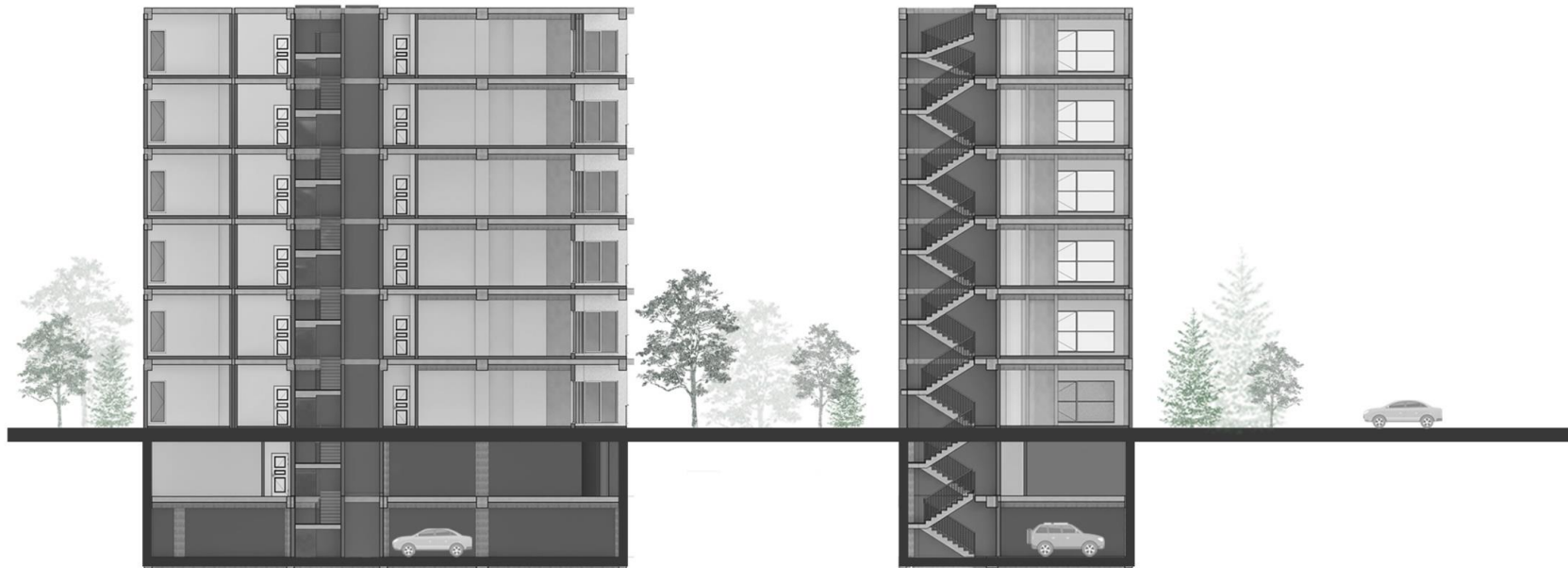
◀ ELEVATION PHOTO

KHORDAD COMPLEX

The curved brick paper heads inside of a cemented comb and it completes the volume. Because of the lack of enough space, location of the side and its surroundings, the yard could not be a wide and huge yard, so a terrace in lobby got located and it connects the landscape and interior spaces, provides extra greenery and it's all covered by green ceramic tiles.

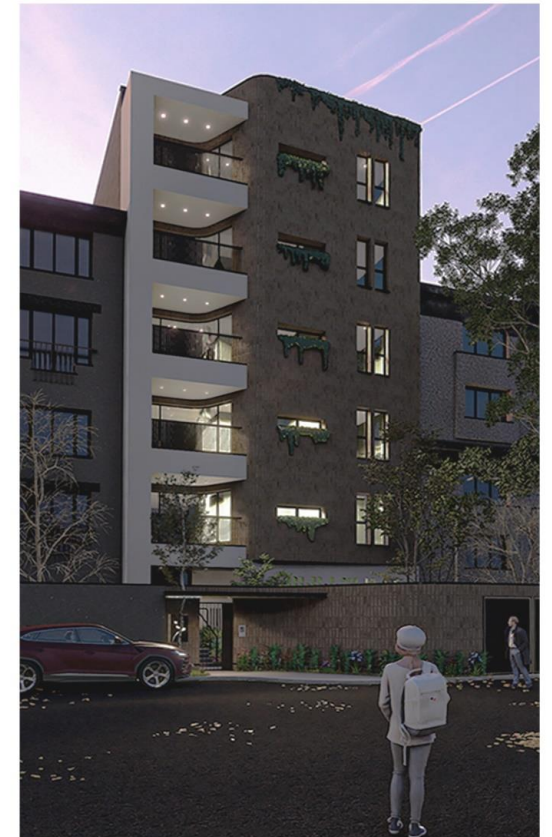


INTERIOR VIEW



SECTION A-A ▲

SECTION B-B ▲





شاهان

ShAHAN RESIDENTIAL BUILDING

📍 Fardis, Karaj, Iran

📏 4590 m²

📅 2022

✅ Under Construction

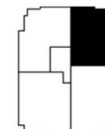
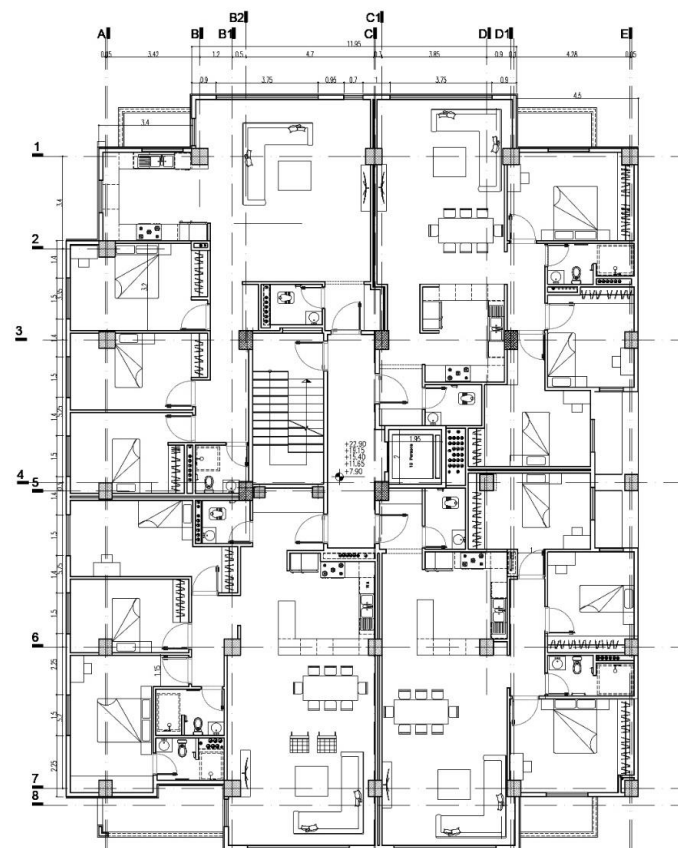
Architect : Farzad Ghaffari

Client : Eng. Hajalian

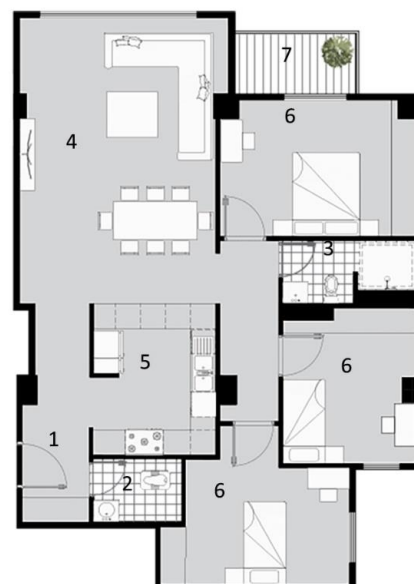
Design team: Farbod Ghaffari, Negar hasanizadeh,
Homa Fallah, Amirali Borghei, Amir Soltani, Ashkan Ghiasvand

Structure Design: Eng. Farahani

Facility Design: Eng. Kazemi . Eng. Minaei



Key plan



1. Entrance
2. WC
3. Bathroom
4. Livingroom
5. Kitchen
6. Bedroom
7. Terrace

N

INTERIOR RENDER



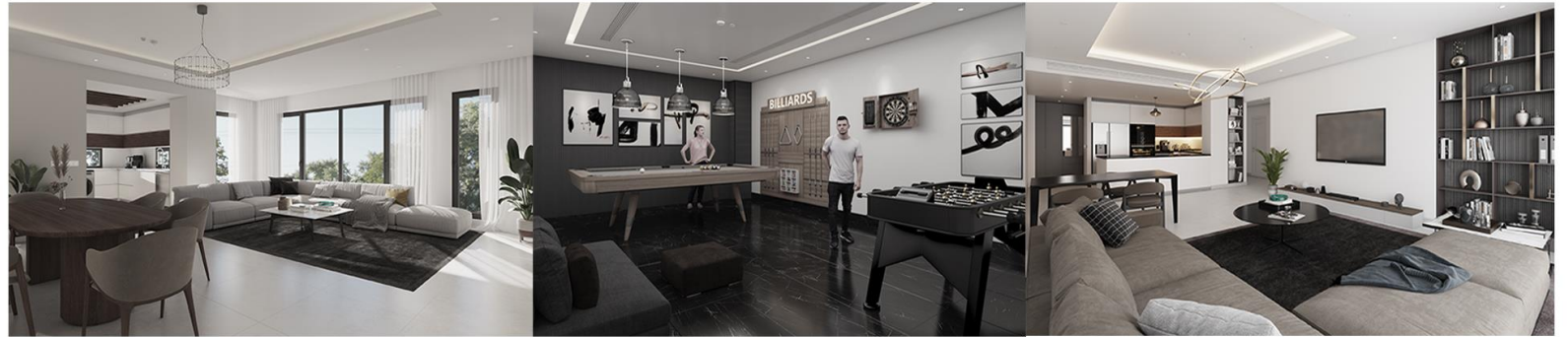
2nd to 6th



FLOOR PLAN ▲

EXTERNAL VIEWS ▼

LOBBY



INTERIOR VIEW

SECTION A-A

NORTH VIEW





VILLA KOOBAR

📍 Hasanakdar, Chaloos, Iran

📏 434 m²

📅 2022

✅ Under Construction

Architect : Farzad Ghaffari

Construction : Pamchal Group

Design team: Homa Fallah, Farbod Ghaffari, Negar Hassanizadeh, Amir Soltani, Ashkan Ghiasvand, Amirali Borghei

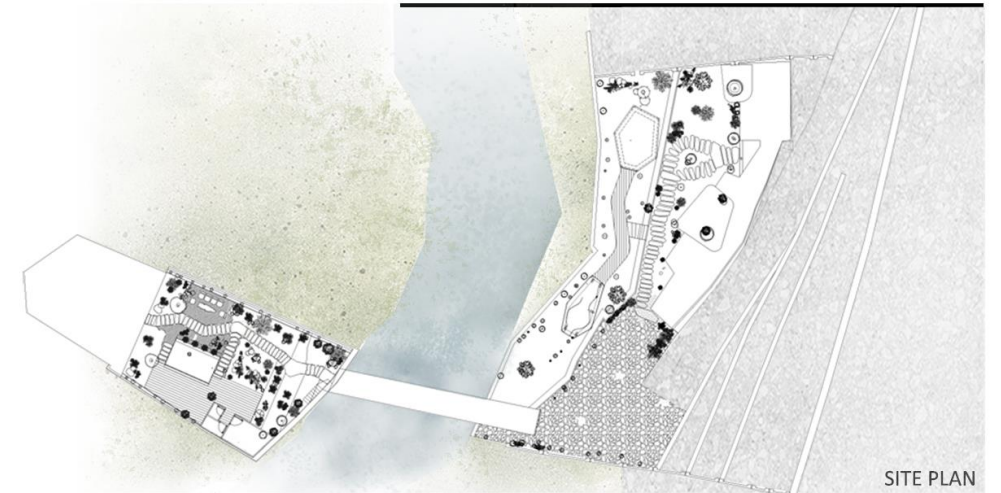
Structure Design: Eng. Tashakori . Eng. Farahani

Facility Design: Eng. Kazemi . Eng. Minaei



N

1. Entrance
2. WC & Bathroom
3. Livingroom
4. Kitchen
5. Bedroom
6. Terrace
7. Store



SITE PLAN

Villa Koobar

The project is located in a rural space, between tall trees and next to the mountains, and the river tears the site apart. An old metal bridge connects two points of the site which is also historical. The clients demanded a space to spend weekends with the capacity of many guests, redesigning and rebuilding the old house at the end of the site, a pool, parking spaces, pergola, suit, space for janitor, and a bench with the view of the river.

◀ MAID'S SUITE & GUEST SUITE

EXTERNAL VIEWS ▼

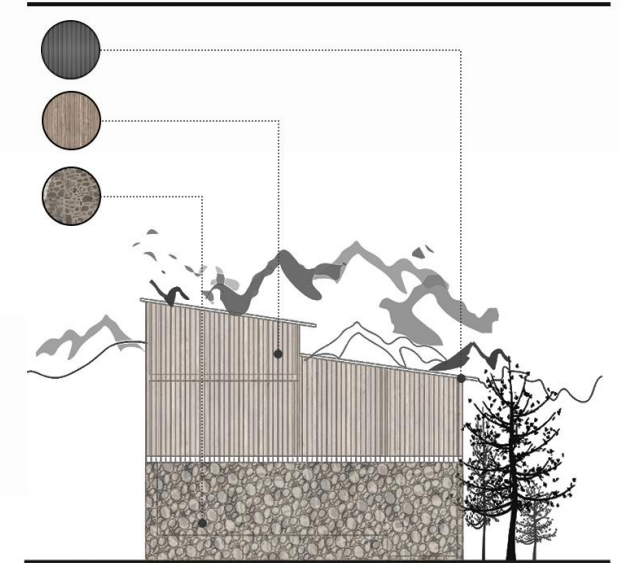




BEFORE

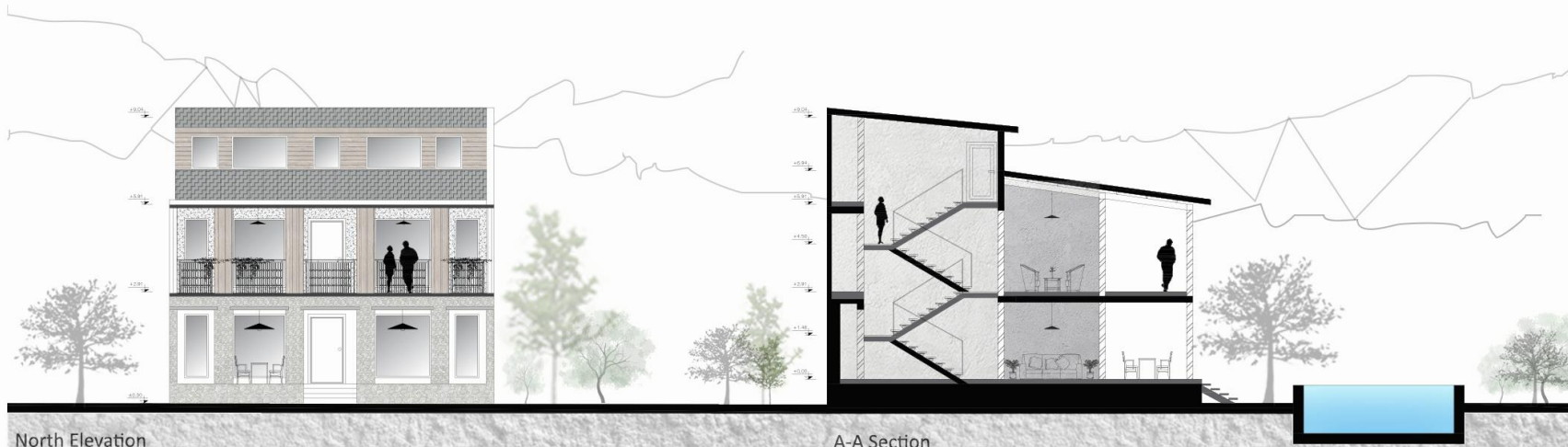
Villa koobar

The design purpose was to rebuild the main building with the traditional elements, locating and designing pergola, benches, suits and janitor resident among the trees with no tree being cut. According to these principles, the new buildings have some light structures and curve shaped plans in order to the saving the trees and respecting the nature.



SECTION A-A

NORTH VIEW





DOUBLE TREE COMPLEX

📍 Fardis, Karaj, Iran

📏 2500 m²

📅 2020

✅ Finished

Architect : Farzad Ghaffari, Reza Ganjei

Client : Eng. Azizi

Construction : Mim builders

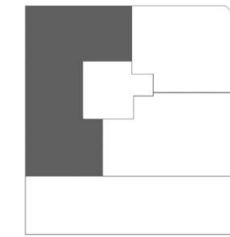
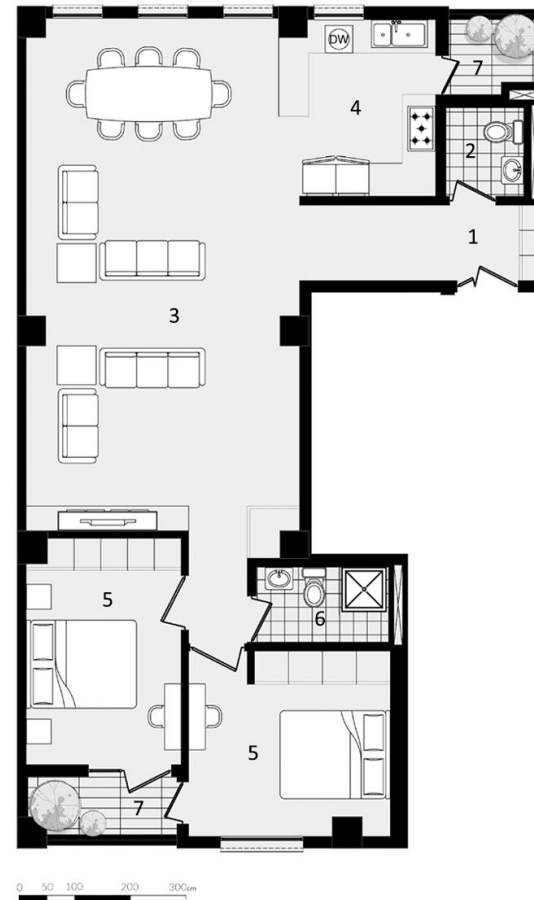
Design team: Homa Fallah, Samira Hazer, Farbod Ghaffari,
Hossein Damirchi, Vida Hasannia, Mobina Hizaji

Structure Design: Eng. Farahani

Facility Design: Eng. Kazemi



Second Floor Plan



N

1. Entrance
2. WC
3. Livingroom
4. Kitchen
5. Bedroom
6. Bathroom
7. Terrace

In the Double tree Complex, the main design idea is inspired by the Double tree within the site. The proximity of the Double tree became a pattern to use in combining the two as a combination of two contrasting black and white colors that complement each other while being different. In fact, the contrast of the facade color was chosen using black brick and white cement in the main body of the building to induce solidity and stability. The twisting and entanglement of black and white volumes in the form of the facade led to recesses and protrusions to complete the design of the facade.

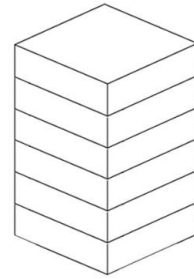
FLOOR PLAN ▲

INTERIOR VIEWS ▼

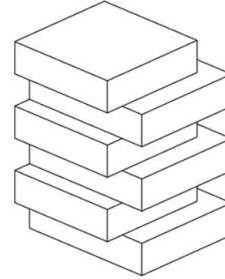




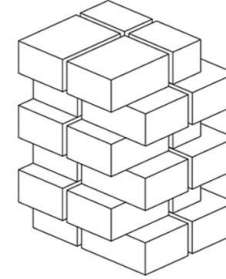
EXTERNAL VIEW
DESIGN PROCESS



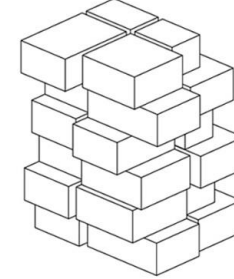
Massing initial



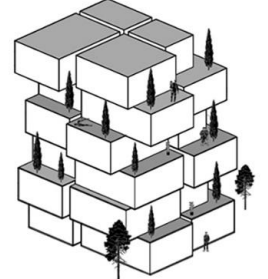
Solid volume



Division of floors



Moving floors



Final design



B-B Section



North Elevation



EXTERNAL VIEW ▲
ELEVATION AND SECTION ▼



TIR RESIDENTIAL BUILDING

📍 Fardis, Karaj, Iran

📏 4432 smq

📅 2021

✅ Finished

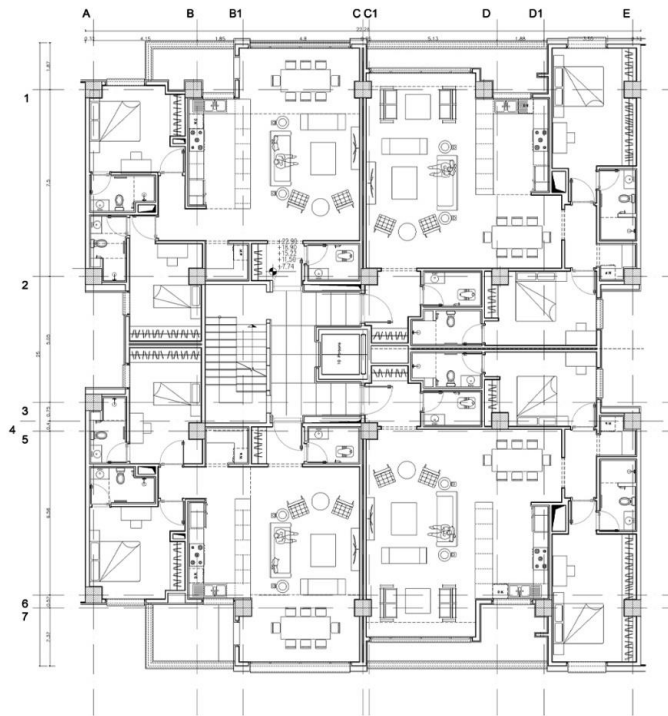
Architect : Farzad Ghaffari

Client : Mim builders

Construction : Mim builders

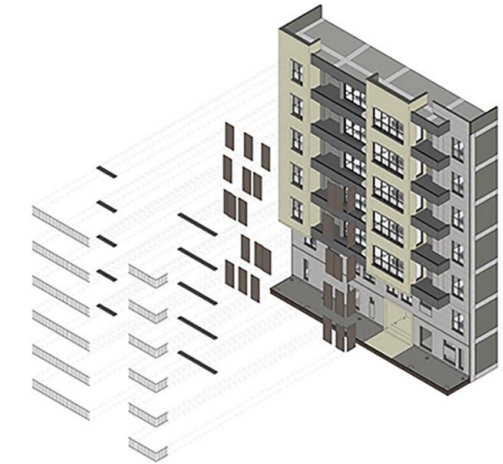
Design team: Farbod Ghaffari, Reza Ganjei, Negar hasanizadeh, Amirali Borghei, Homa Fallah, Amir Soltani, Ashkan Ghiasvand, Amirhossein Kazemi

Facility Design: Eng. Kazemi . Eng. Minaei



N

1. Entrance
2. WC
3. Livingroom
4. Kitchen
5. Bedroom
6. Bathroom
7. Laundry
8. Terrace



TIR residential building

The Site is located between two residential buildings, from north it faces the street and from south, a private, quite and peaceful city block. The design purpose was to create 24 apartment units with the space quality as high as possible, unlike the neighbors and surrounding buildings. Balconies are places to live, shaded with railing-wooden panels in order to create a more private space and suitable for families to spend more time in these semi-open spaces. Every unit has 2 master bedrooms, a laundry and a wide and open balcony. The building contains 24 parking spaces in ground floor and basement, lobby, social hall and a cinema in ground floor.

2nd to 6th

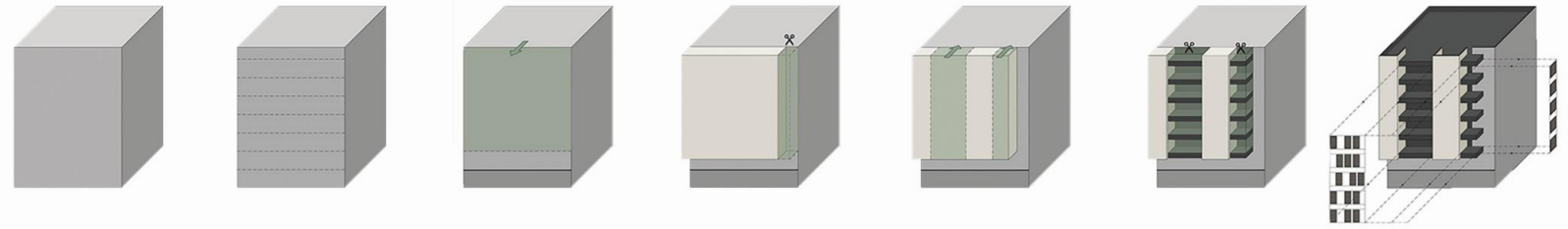
FLOOR PLAN ▲

EXTERNAL VIEWS ▼





FINISHED



DESIGN PROCESS



INTERIOR VIEW

SECTION A-A

NORTH VIEW





TABIAT RESIDENTIAL TOWERS

📍 Fardis, Karaj, Iran

📏 36500 m²

📅 2021

✅ Under Construction

Architect :Reza Ganjei, Farzad Ghaffari

Construction : Pamchal Group

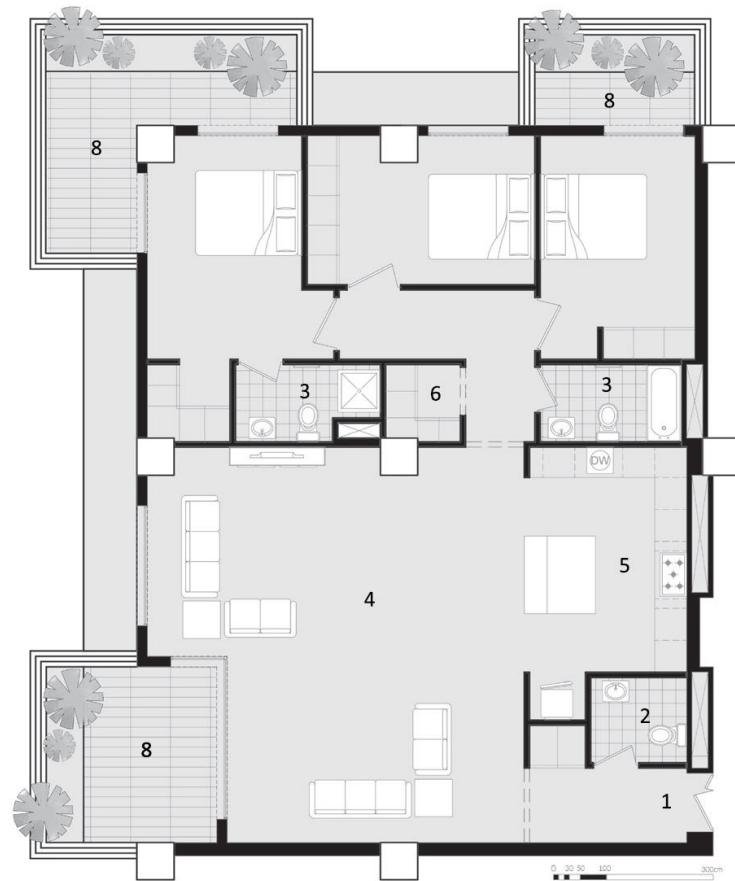
Design team: Farbod Ghaffari, Hossein Damirchi,
Vida Hasannia, Neelanoosh Kandakatlal, Homa Fallah,
Negar hasanizadeh, Mobina Hizaji, Amir Soltani, Amirali Borghei

Structure Design: Eng. Tehrani, Eng. Tashakori , Eng. Yousefi

Facility Design: Eng. Kazemi , Eng. Minaei

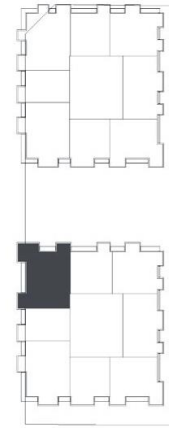


1st, 3rd, 5th, 7th Floor Plan



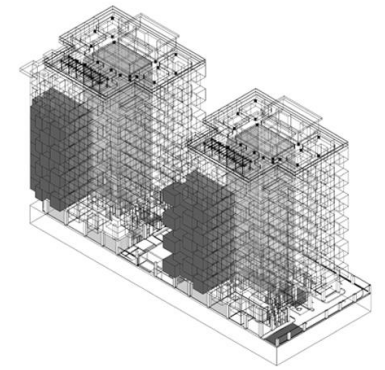
FLOOR PLAN ▲

INTERIOR VIEWS ▼



N

1. Entrance
2. WC
3. Bathroom
4. Living Room
5. Kitchen
6. Laundry
7. Bedroom
8. Terrace

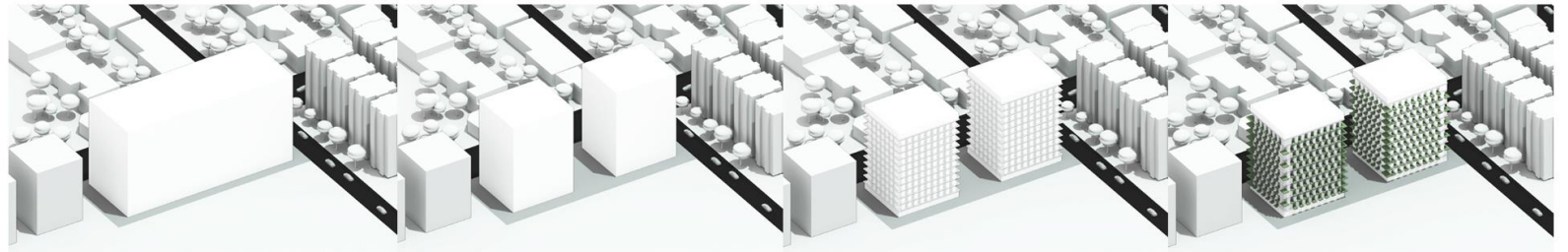


TABIAT towers have not only taken a different approach to similar residential models in terms of design, but have also put forward new ideas from a functional point of view. One of the most important ones is the connection of home spaces with nature and the open space around it through the terrace. In fact, integrating the terrace with the living space in a way that complements it, has been presented as a main solution in the design. Also in the design process, with the aim of reducing the negative impact on the environment, new sustainable technologies have been used, including waste management, treatment and reuse of graywater and green roof.





EXTERNAL VIEW

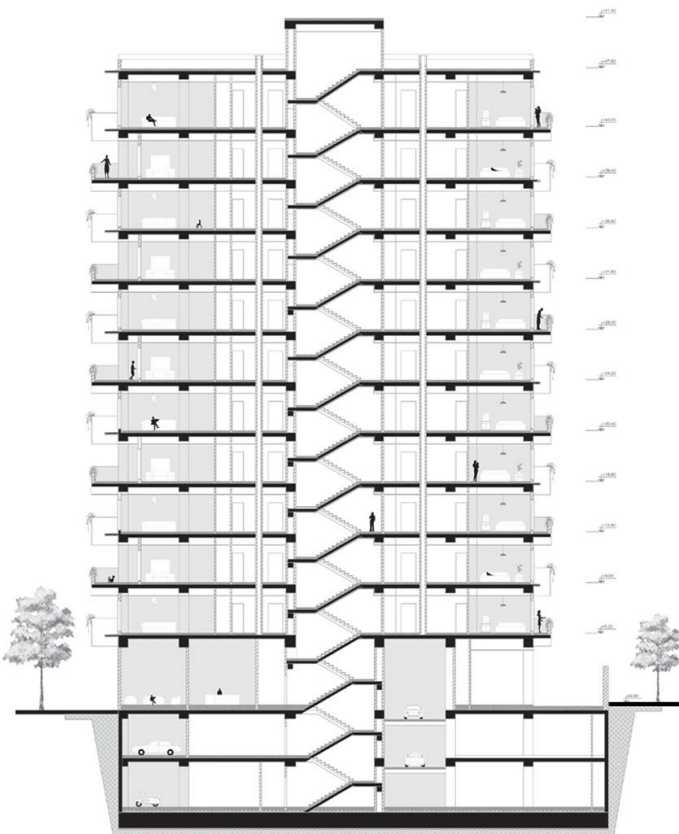


The main form

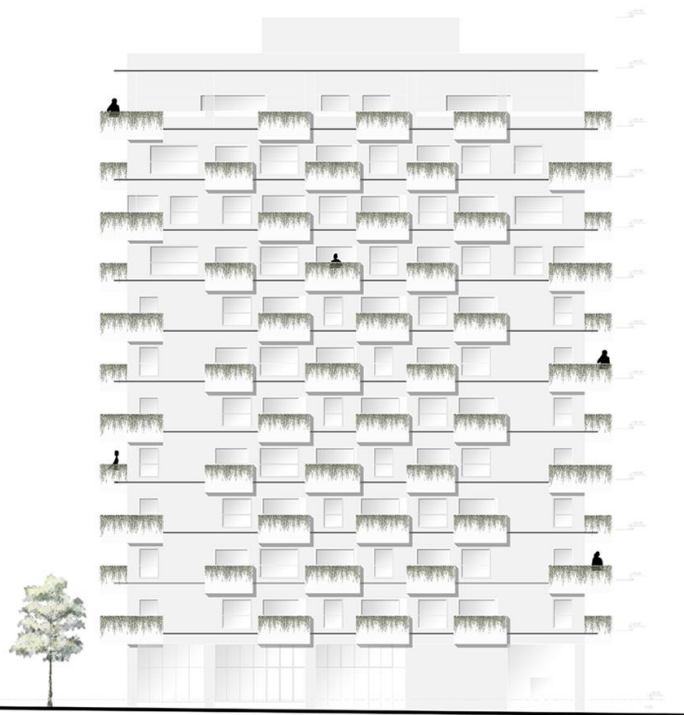
Divide into two pieces

Division of floors

Mirror the floors and design the green space



B-B SECTION



West Elevation



INTERIOR VIEW ELEVATION AND SECTION



SIDE PARK RESIDENTIAL BUILDING

📍 Fardis, karaj, Iran

📏 4655 m²

📅 2023

✅ Under Construction

Architect : Farzad Ghaffari

Client : Mojtaba Bakhtiari

Construction : ASA group

Design team: Farbod Ghaffari, Negar Hassanizadeh, Homa Fallah, Amir soltani, Amirali Borghei.

Structure Design: Eng. Yousefi

Facility Design: Eng. Kazemi . Eng. Minaei



N

1. Entrance
2. WC
3. Bathroom
4. Kitchen
5. Livingroom
6. Diningroom
7. Bedroom
8. Laundry
9. Terrace

SIDE PARK apartment building

As the title of project says, the site is located beside a park. Connecting the project with the park and also making the inside of the project safe were two important factors in design. The first volume assumed as a white volume, which is cutting it-self in its north side to create the main entrance. Every residential unit assumed as a specific brick cube with a special brick pattern and balconies connecting these brick cubes together. The space between the cubes makes a subtract in white core of the volume, and this subtract got in north, west and south side of the building repeated, which creates a dialogue between the users of building and the park in the west side. This building contains 24 units with different areas and in ground floor there is a lobby, social hall, gym and also parking spaces.



3D PLAN

SIXTH FLOOR

INTERIOR VIEWS

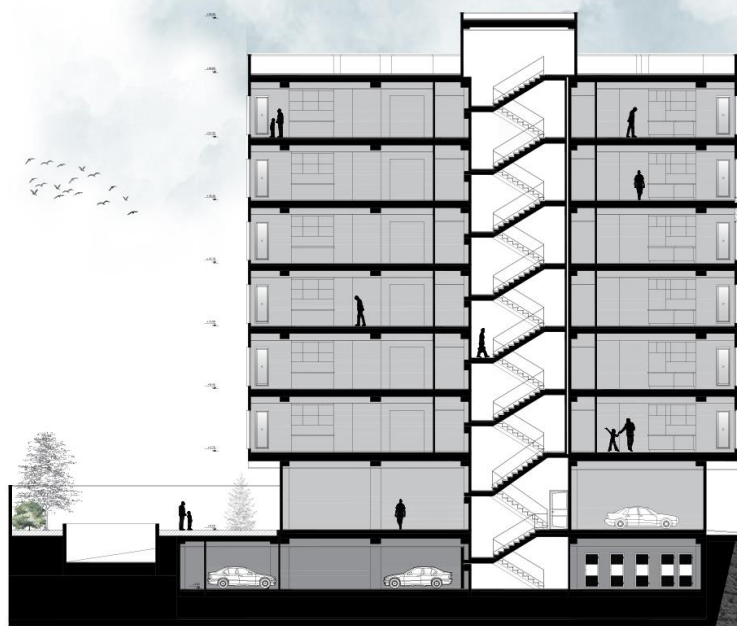


EXTERNAL RENDER



NORHT VIEW

B-B SECTION



B-B Section

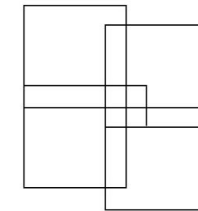


Details of facade and entrance



North Elevation



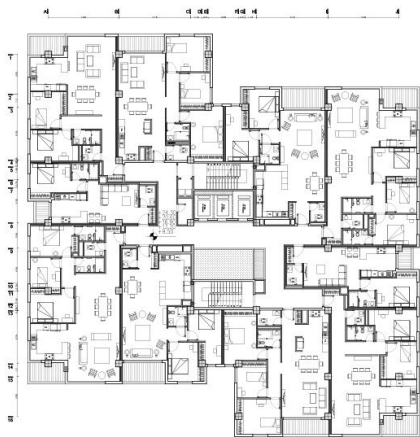
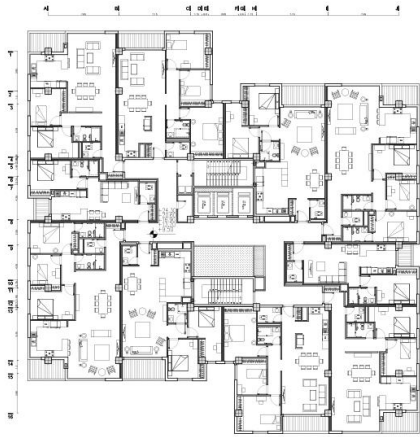


AFTAB RESIDENTIAL COMPLEX

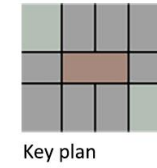
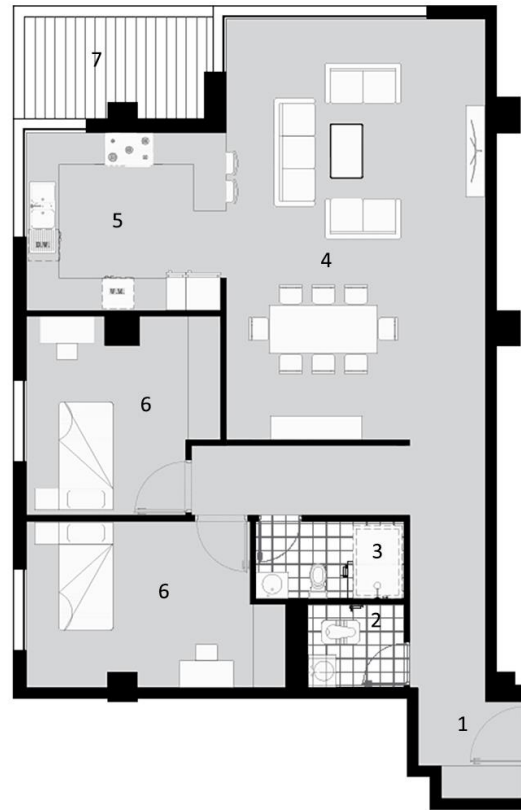
-  Fardis, Karaj, Iran
-  25000 m²
-  2020
-  Under Construction

Architect :Farbod Ghaffari, Farzad Ghaffari, Reza Ganjei
 Construction : Pamchal Group
 Design team:Negar hasanizadeh, Neelanoosh Kandakatla,
 Hossein Damirchi, Vida Hasannia, Homa Fallah, Mobina Hizaji,
 Amir Soltani, Amirali Borghei

Structure Design: Dr. Sedighi
 Facility Design: Eng.Kazemi . Eng. Minaei



2nd,3rd,4th,5th,6th



- N
1. Entrance
 2. WC
 3. Bathroom
 4. Livingroom
 5. Kitchen
 6. Bedroom
 7. Terrace



FLOOR PLAN ▲

INTERIOR VIEWS ▼

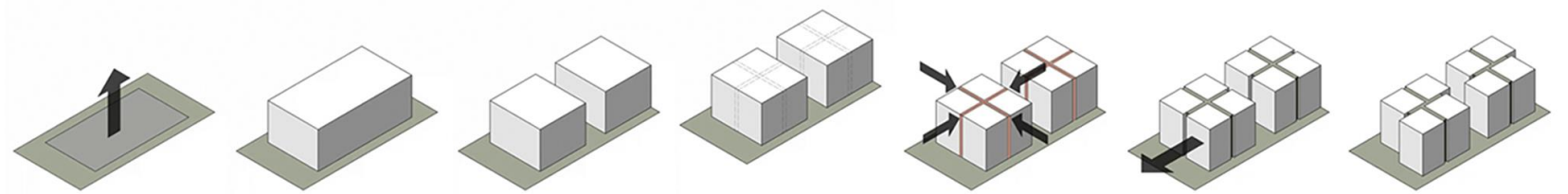
AFTAB residential complex

The design purpose was to improve residential space quality for financially mid-leveled families. This project counts as a financial architectural project. Providing good views and suitable orientation of the blocks in order to receive natural light, organizing residential spaces in every type of floors, and usable balconies for every unit were most important factors in design. Green spaces and landscape design allows the user to walk and run and bicycle run in the yard or on roof garden, and also offers the users gardening and vegetable or fruit producing. According to a questionnaire provided by design team member, the probable users chose spaces like multi-function hall, Workshop space, library and children daycare as most wanted public spaces in complex, also the complex contains a gym and a pool in basement. The Atrium in the middle of blocks helps corridors and floor lobbies to have natural sun light and fresh air. Garden pit in basements acts like a green connector between basement and ground floor, and also it brings natural sun light and fresh air to the basement and parking spaces.





EXTERNAL VIEW



DESIGN PROCESS



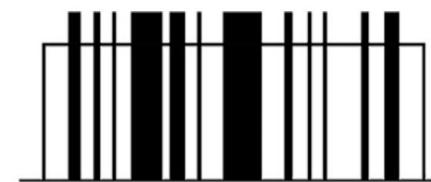
EXTERNAL & INTERIOR VIEW

SECTION A-A



NORTH VIEW





BARCODE COMMERCIAL COMPLEX

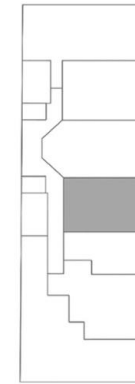
-  Fardis, Karaj, Iran
-  6750 m²
-  2021
-  Under Construction

Architect : Farzad Ghaffari, Reza Ganjei
 Construction : Pamchal Group
 Design team: Hossein Damirchi, Vida Hasannia ,
 Neelanoosh Kandakatla, Negar Hasanizadeh, Homa Fallah,
 Mobina Hizaji, Amir Soltani , Amirali Borghei

Structure Design: Eng. Farahani
 Facility Design: Eng. Kazemi . Eng. Minaei



2nd. 3rd. 4th. 5th Floor



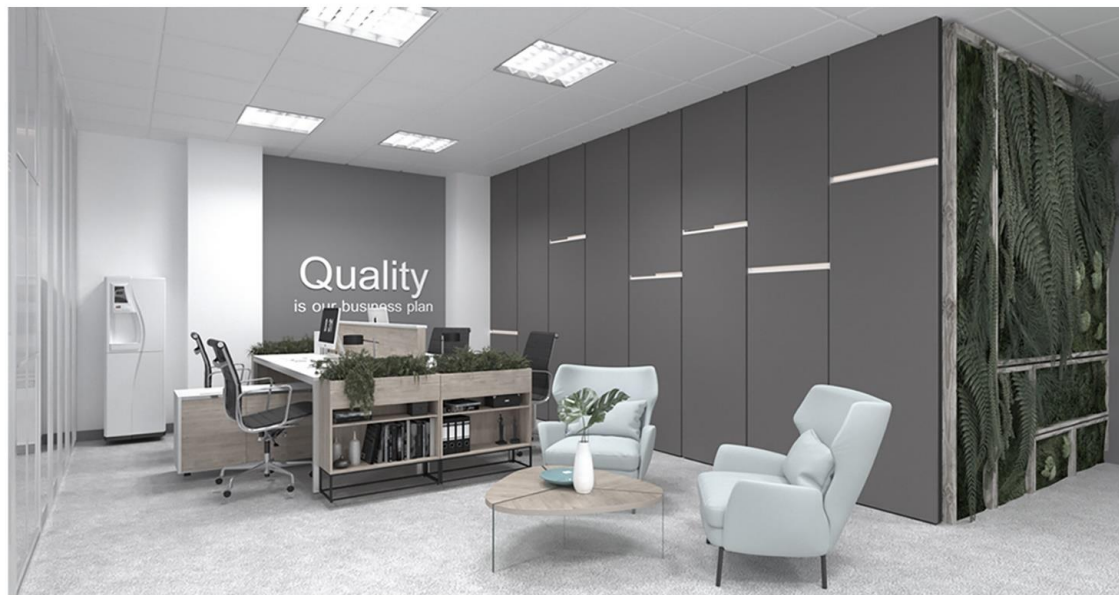
N

- 1. Entrance
- 2. WC
- 3. Conference Room
- 4. Living Room
- 5. Kitchen
- 6. Terrace

In BARCODE, the design team tried to depict a significant and different view of the area by creating a two-shell view. The purpose of designing this project, in addition to the needs of the client, is to create a modern and prominent building. Therefore, in the design of the first shell, the curtain wall system has been used in order to reduce the weight of the facade and create an integrated view.

FLOOR PLAN ▲

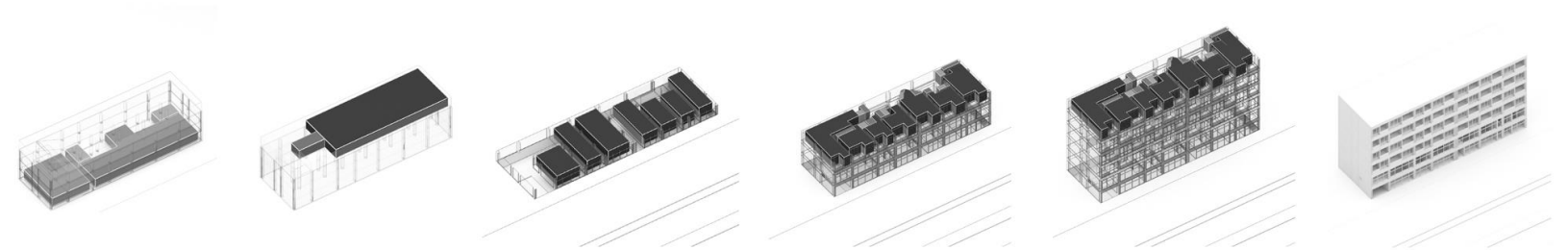
INTERIOR VIEWS ▼





◀ INTERIOR VIEW

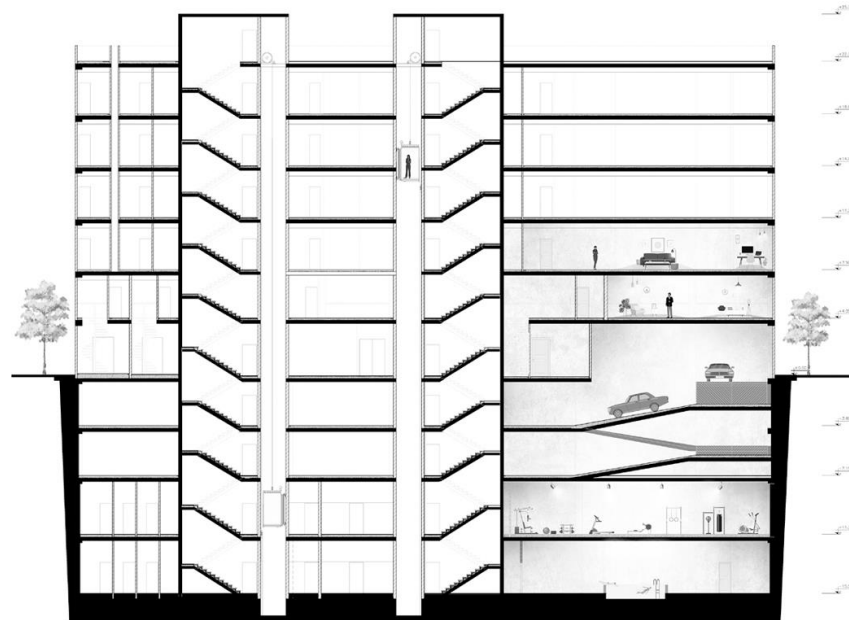
The second shell, which consists of fixed vertical wooden louvers, is actually a beautiful garment for the building that, in addition to defining the composition of the building facade, acts as a protector by controlling the incoming light and protects the interior spaces from light and heat.



FLOOR DIAGRAM



EAST ELEVATION



A-A SECTION



EXTERNAL VIEW ▲

ELEVATION AND SECTION ◀

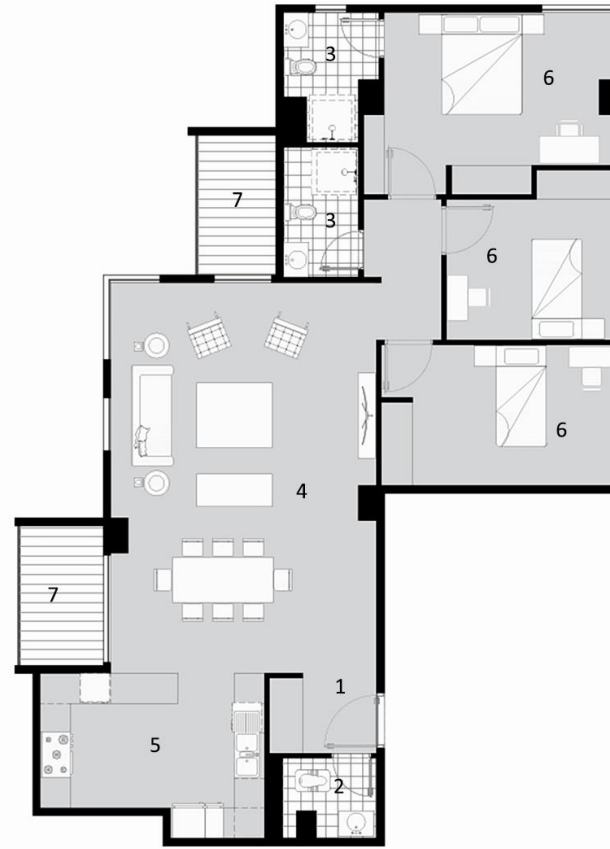
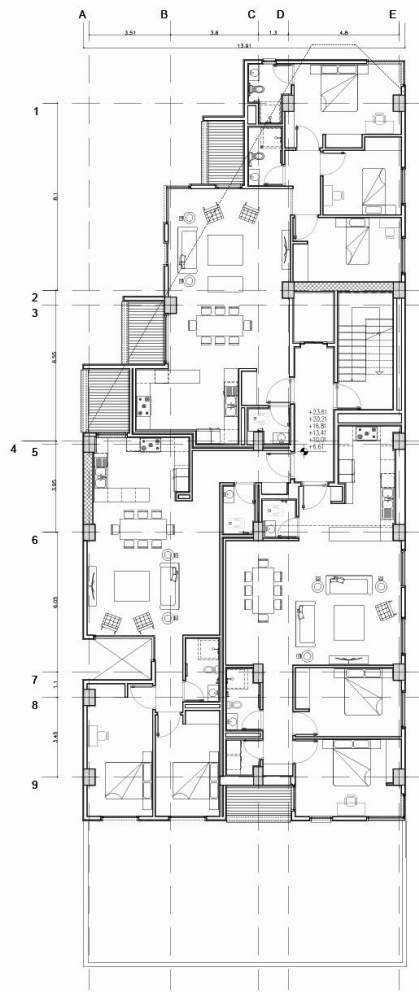


ARVAN APARTMENT

-  Fardis, Karaj, Iran
-  4120 m²
-  2020
-  Under Construction

Architect : Farzad Ghaffari , Reza Ganjei
 Construction : Pamchal Group
 Design team: Negar Hasanizadeh, Homa Fallah, Amir Soltani, Amirali Borghei, Hossein Damirchi

Structure Design: Eng. Farahani
 Facility Design: Eng. Kazemi . Minaei



- N
1. Entrance
 2. WC
 3. Bathroom
 4. Livingroom
 5. Kitchen
 6. Bedroom
 7. Terrace



ARVAN complex

The side is located in the corner of a crowded street and a dead-end alley. The clients demanded 3 commercial units, with specific storages and mezzanines. The accessibility through the stores provided beside of the street and a cozy lobby beside of the alley is the main enter to the residential units. There's also parking spaces in ground floor between the lobby and yard.

FLOOR PLAN ▲

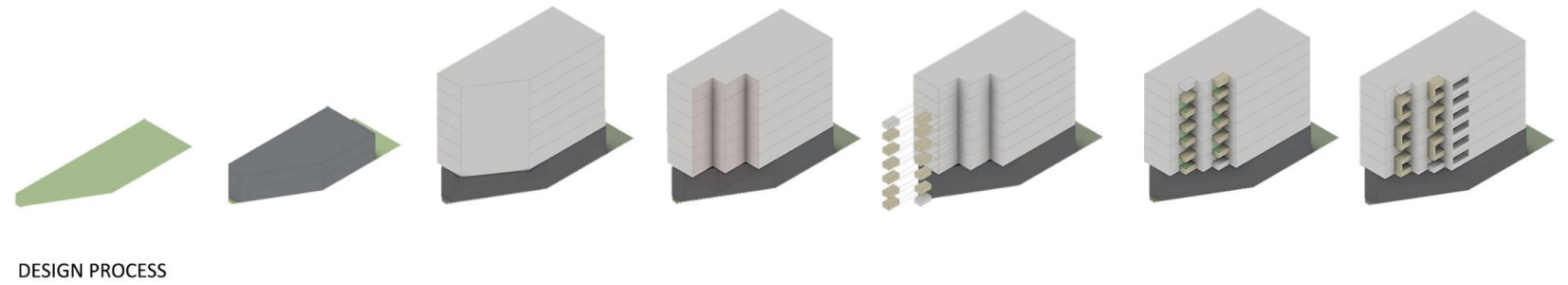
INTERIOR VIEWS ▼

2nd to 8th



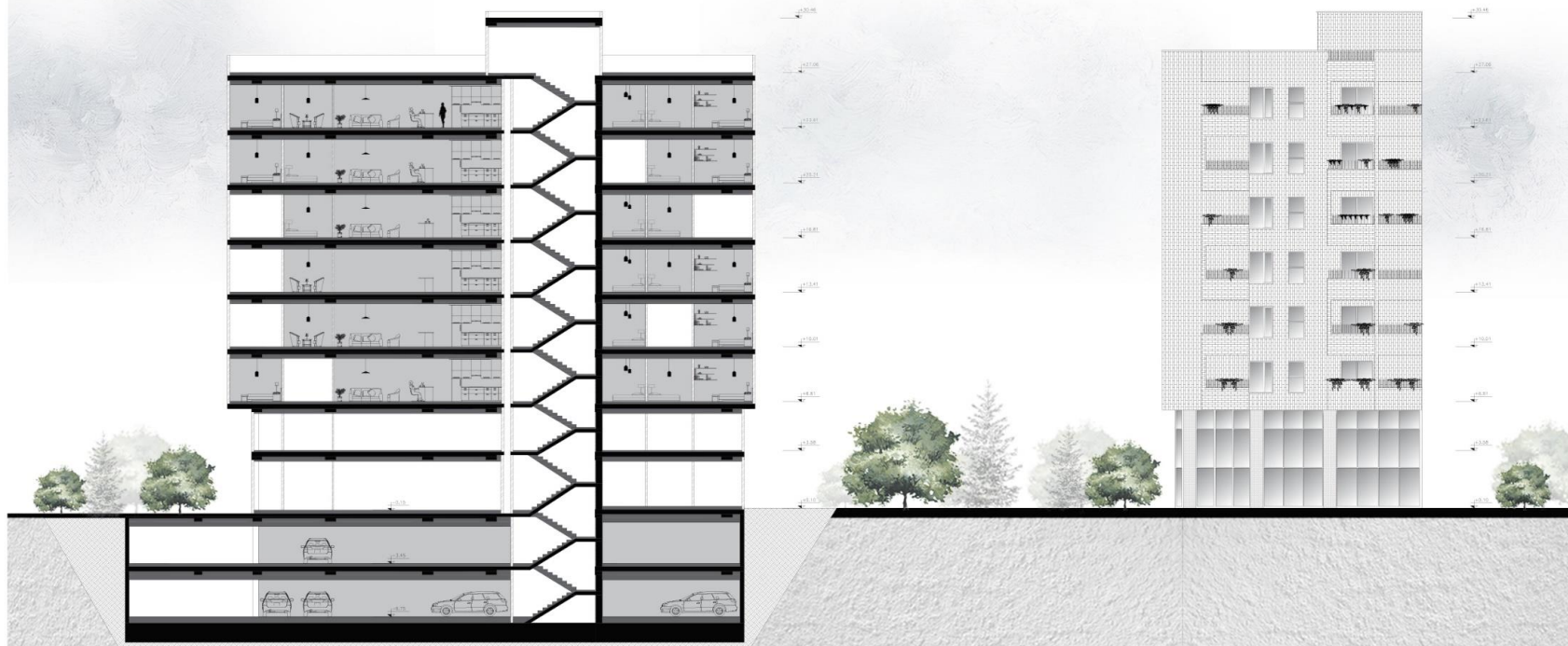


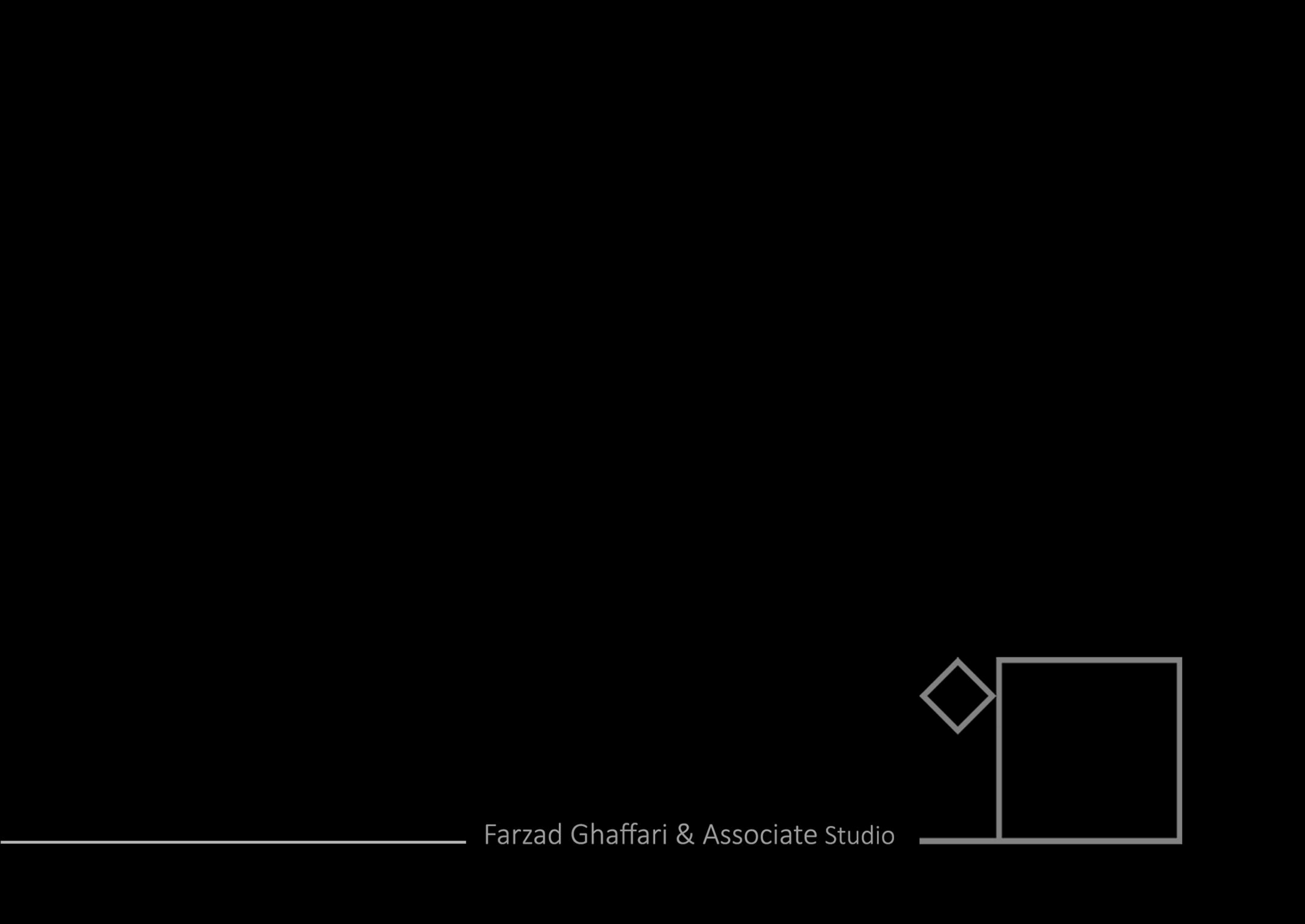
◀ ELEVATION



SECTION A-A ▼

NORTH VIEW ▼





Farzad Ghaffari & Associate Studio