

KITCHEN DESIGN

Effective kitchen design is the process of combining layout, surfaces, appliances and design details to form a cooking space that's easy to use and fun to cook and socialise in. The world of effective kitchen design is a maze of design ideas, guides and tips – and a seemingly endless stream of expert advice. Where do you begin? To navigate this culinary landscape, we've compiled a transformative starting point help guide you. From determining your needs to installing your work surfaces, our guide below will help you on your way to designing a dream kitchen that's every bit as beautiful as it is practical. First things first. Before you start planning your brand new kitchen on Pinterest, you first need to decide what your needs are.



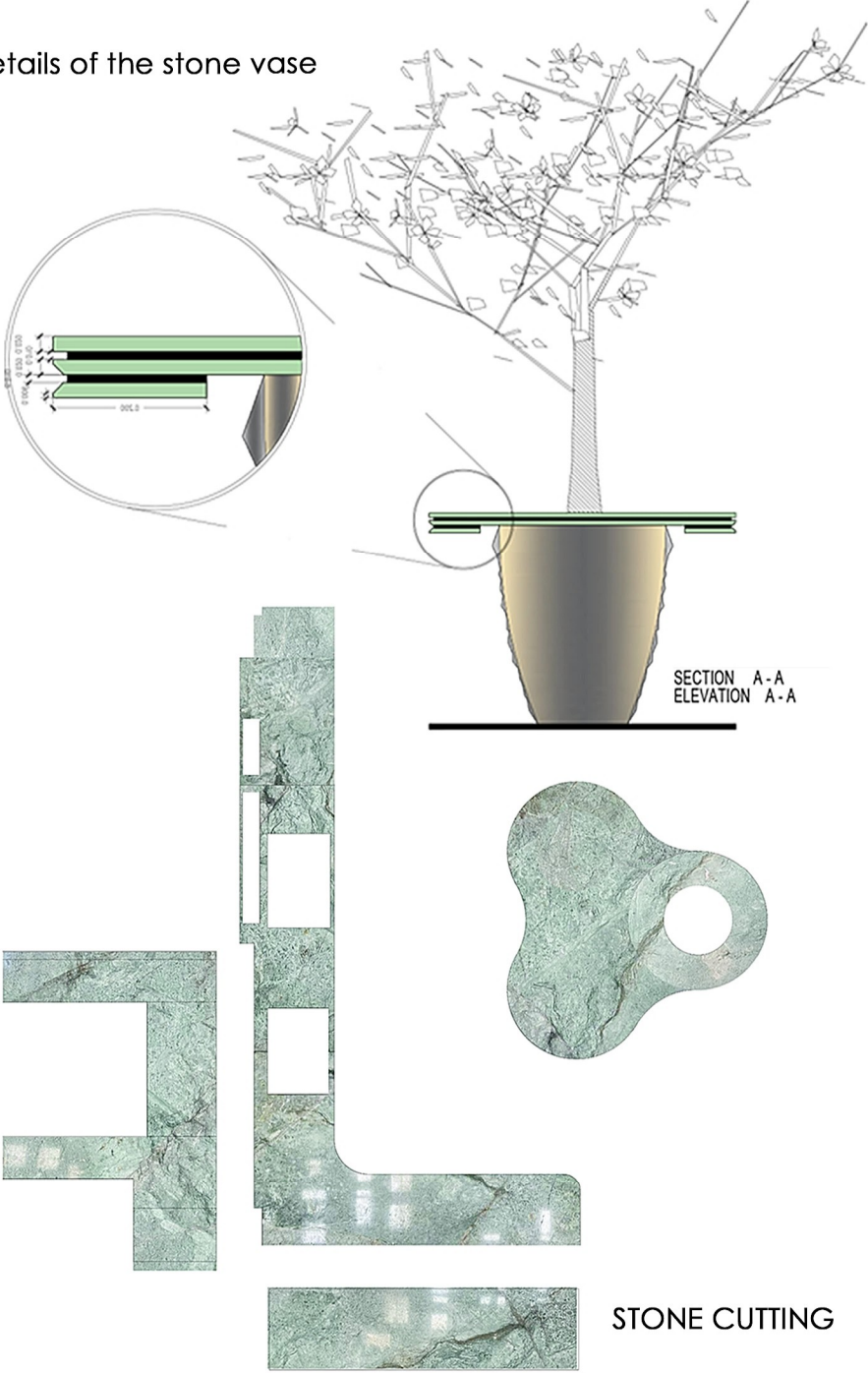
KITCHEN PLAN

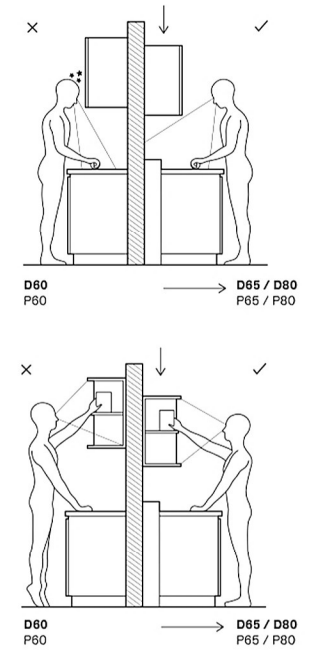


Cabinet drawings are made up of detailed sketches and elevations that represent and guide the building and installation of cabinet components, including casework, trim, and doors. They include material lists, dimensions, installation instructions, and necessary measurements. Cabinet drawings need to be created for any room



Details of the stone vase





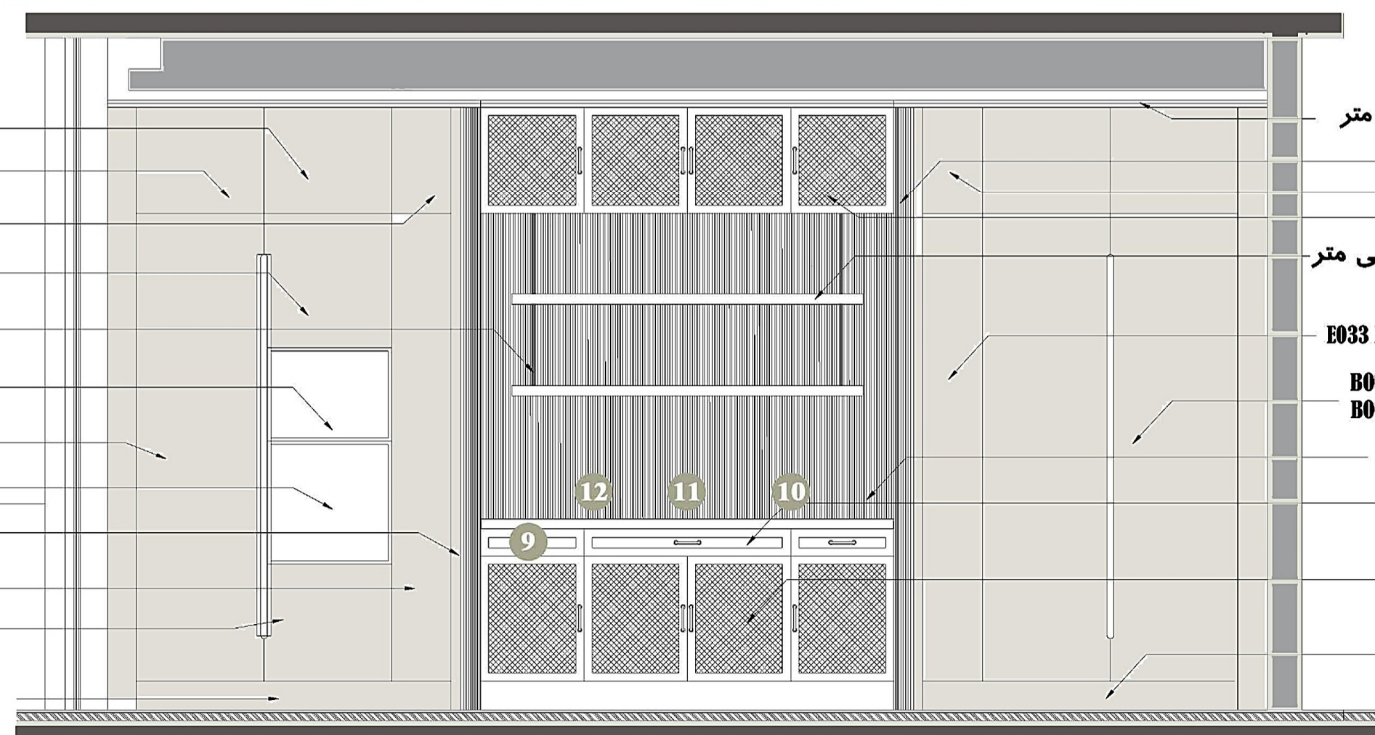
Depth of the worktop and height of the wall unit

A traditional wall unit is usually installed at a height that prevents users from having a complete view of the objects located on the top shelf, making it difficult to use, especially for short people. The 65 and 80-cm depths allow users to stand further away from the wall units which can now be lowered, making them more visible and accessible and increasing the space in front of them.

With the traditional 60-cm depth, even if the splashback is higher, the wall unit gives users a claustrophobic feeling and blocks the view of the worktop during food preparation. The 65 and 80-cm depths give users more space to work in, standing at a safe distance from sharp edges and wall units. That cooped up feeling is now cancelled, giving users more freedom of movement while improving the view of the worktop that can now be used to the full.

East Elevation Cabinet

For Refrigerator & Freezer we have two options to choose:
Miele & Bosch
Please Choose between these options.



کمد ساده
کمد ساده
کمد ساده
کمد ساده

لوله برنزی

5 مایکروویو میله موجود در پروژه

6 سوپر تاندم یخچالی نانو کوتینگ آرام بند

7 فر مدل میله موجود در پروژه

نمای منحنی Radius 10 Degree

1 سوپری ریلی کمدهای دایموند E033 FANTONI

8 دو عدد کشو و ریل ها (موجود در پروژه)
محل قرار گیری خوبات

پاخور

تاج کابینت و نور در آن ۳٫۲ سانتی متر

نمای منحنی Radius 10 Degree

کمد ساده
کمد ساده

شلف های معلق به عرض ۳۰ سانتی متر

1 سوپری ریلی کمدهای دایموند E033 FANTONI

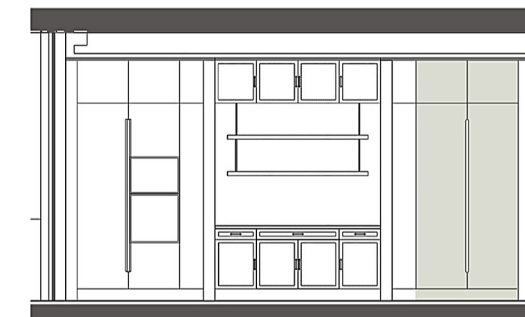
2 یخچال و فریزر توکار BOSCH-GIN81AE30
BOSCH-KIR81AFE0

صفحه ی نوری و تایل های چوبی

3 کشو قاشق و چنگال مهمان

4 کمد بشقاب و کاسه مهمان

پاخور



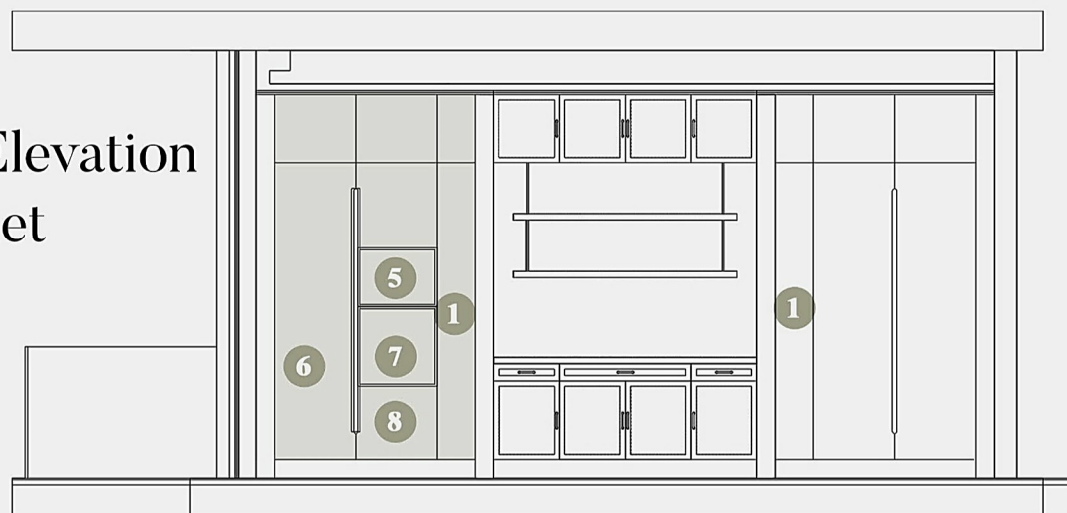
 **BOSCH**

BOSCH-GIN81AE30
Full flexibility in the freezer area. You can remove all the safety glass shelves in the freezer area really easily to create more space - to store a multi-level cake, Lots of space for XXL frozen food with the BigBox drawer.



BOSCH-KIR81AFE0
Keeps the contents of your fridge in the spotlight. Pull-out shelf to have full access to any items. Effortless storage solutions. The fridge that knows how to keep its cool. Warning signal with sound or light when the door is not closed or other error happens.

East Elevation Cabinet



Fantoni

1 سوپر ریلی کهدی دایموند
E033 FANTONI



Melloni

6 سوپر تاندم یخچالی نانو کوتینگ آرامبند
WB 1208 Melloni



8 کشوی قرار گیری حبوبات



Miele

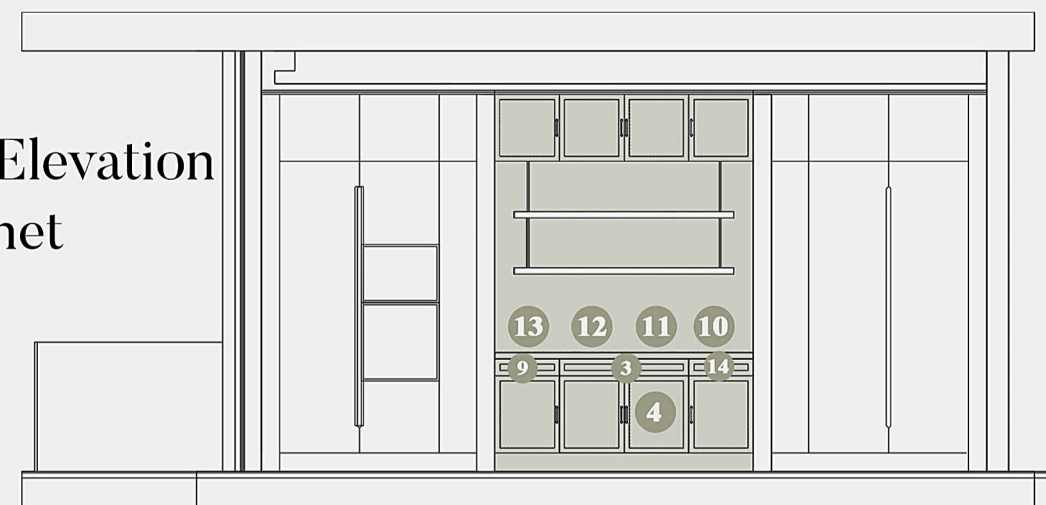
5 ماکروویو میله (موجود در پروژه)



Miele

7 فر میله (موجود در پروژه)

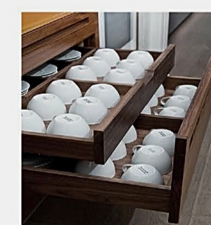
East Elevation Cabinet



3 کشوی قاشق و
چنگال مهمان



4 کمد بشقاب و کاسه مهمان



9 کشوی قرار گیری
استکان اسپرسو



14 کشوی قرار گیری
استکان اسپرسو



10 Kettle
KLF04



11 Espresso Manual
Coffee Machine
EGF03PGEU

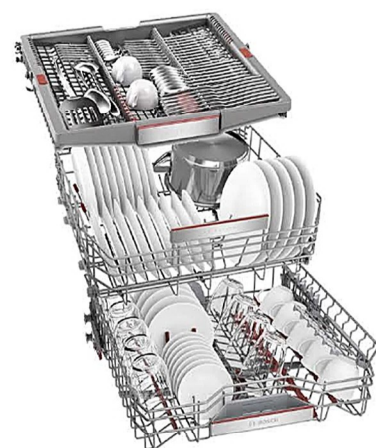


12 Toaster
TSF02

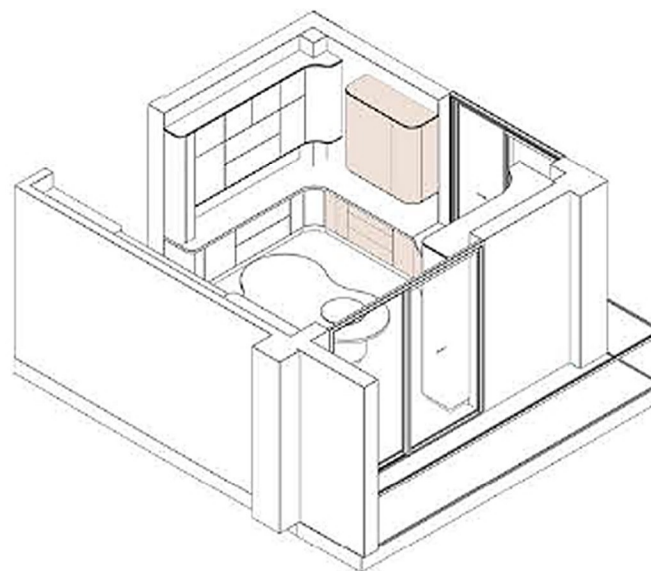


13 Drip Coffee Machine
/Tea Maker

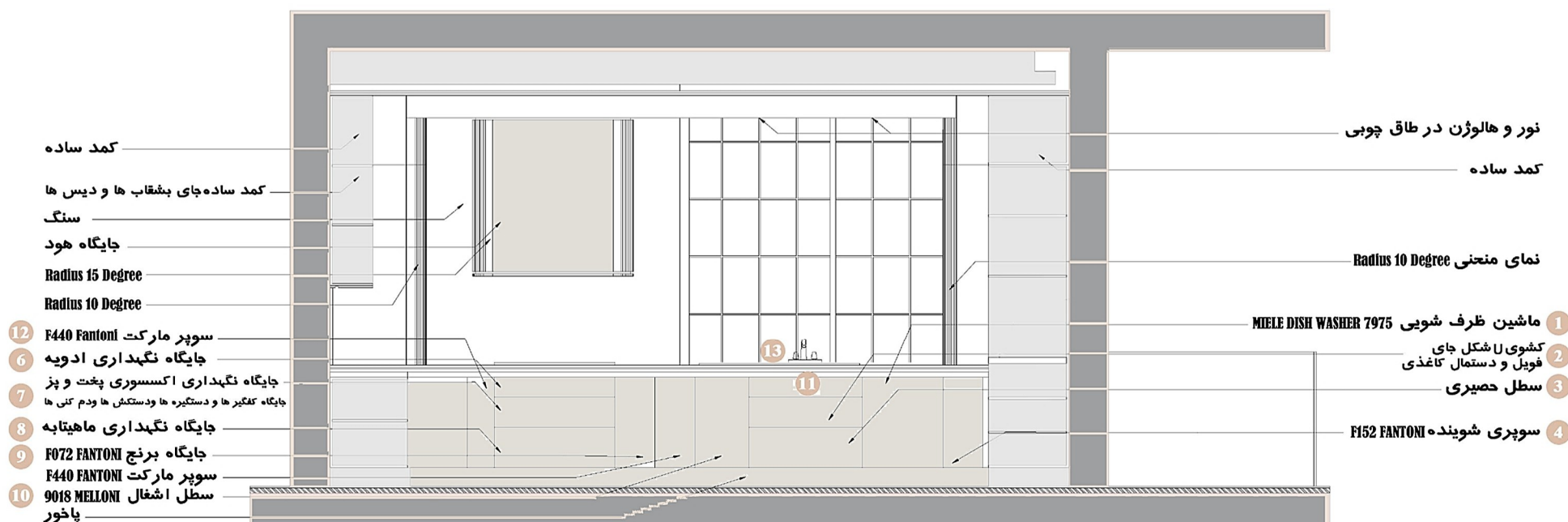
ماشین ظرف شویی
Bosch Series 8

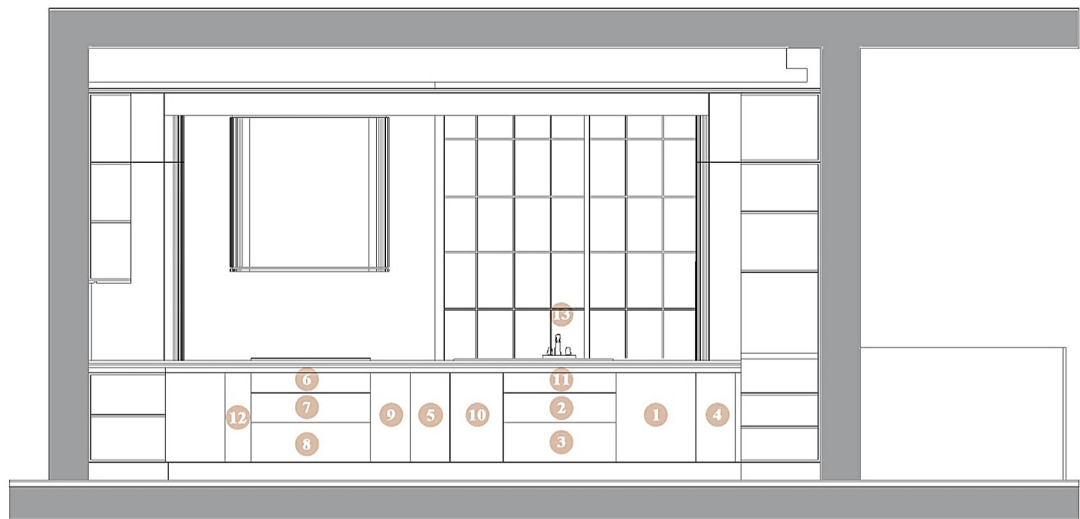


- Perfect drying results with less energy usage.
- Intelligent Programme: individually adapts the washing and drying cycle based on your feedback.
- Heavy duty cleaning for heavy-duty stains.
- Flexible, safe, easy-sliding racks.
- TimeLight: exact remaining time is clearly projected onto the floor.



West Elevation Cabinet





West Elevation Cabinet



2

جای فویل و
دستمال کاغذی



4

سوپر مواد شوینده
Fantoni-F152



6

جای نگهداری ادویه



8

جای نگهداری
ماهیتابه



10

سطل آشغال دو قلو
Melloni9018



12

جای روغن و کفگیر
Fantoni-F440



3

سبد زیر سینک



5

سوپرمارکت
Fantoni-F440



7

جای نگهداری اکسسوری
پخت و پز



9

جای نگهداری برنج
Fantoni-F072



11

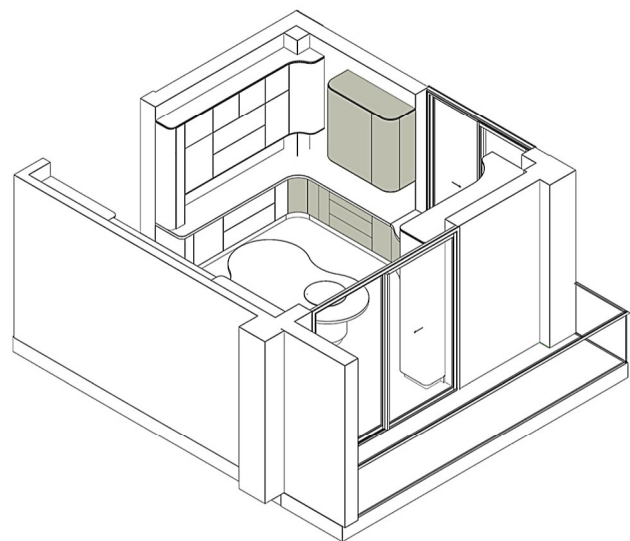
کشوی زیر سینک



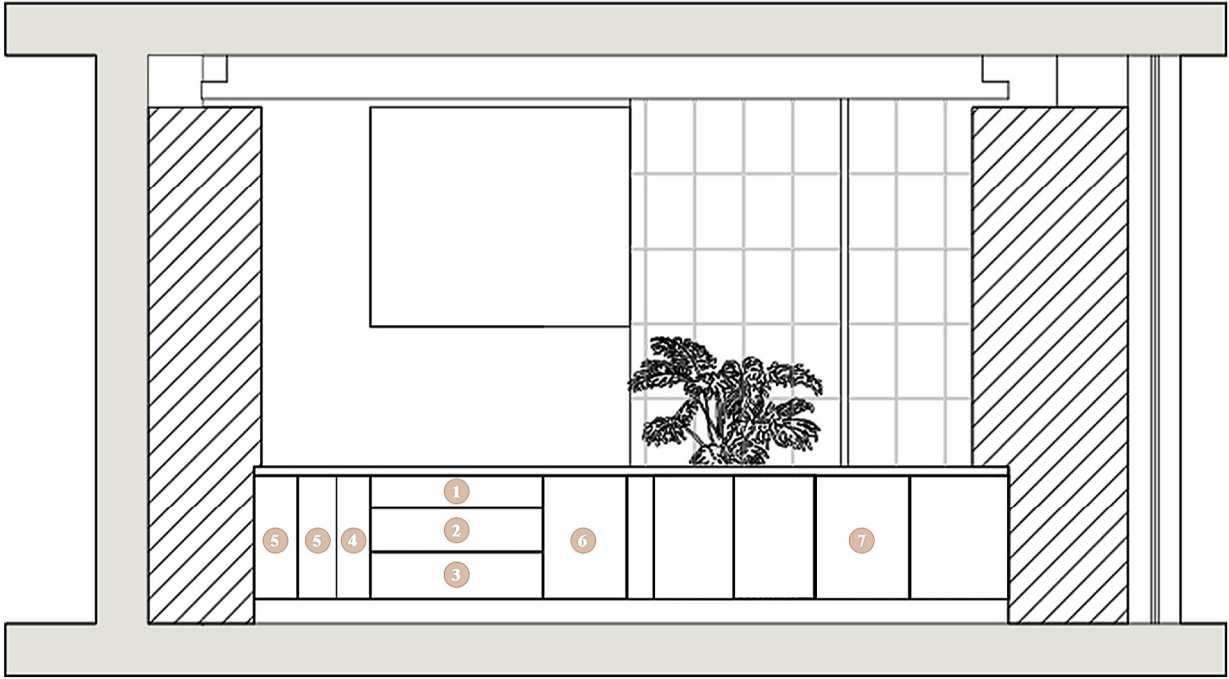
13

آبچکان پشت
سینک

Cabinet Units 02



HOW TO ORGANIZE KITCHEN CABINETS:
For most households, the kitchen is one of the busiest rooms in the whole house. With all of the traffic and multi-users, it can be a difficult space to keep organized. With a good organization system in place, however, it is possible to get and keep your kitchen organized. {If you think that I've always had organized cupboards, check out these before photos from when I first started my organization journey.



Spices: A spice is a seed, fruit, root, bark, or other plant substance primarily used for flavoring or coloring food.



Spoon & Forks: The tools you use to eat your food, including spoons, forks, and knives, are called silverware



Plates: Dinnerware is another term used to refer to tableware, and crockery refers to ceramic tableware, today often porcelain or bone china



Potato & Onion drawer: This is a potato and onion storage bin used for long term food storage of root vegetables.



Oil & Skimmers: Drawer with a low side typically located right next to the stove, and filled with things you would use while cooking such as olive oil, skimmer.



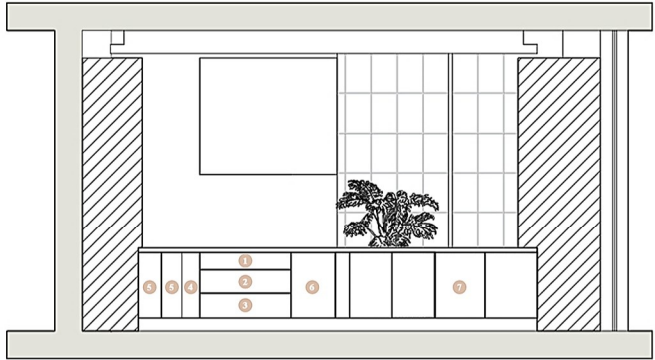
Pots: Keep your pots and pans drawer organized by adding bars or thin pieces of plywood large enough to fit your cookware and lids vertically.



Rices: Rice Bins are storage containers for rice. They keep rice dry, protect it from infestation, and extend shelf life.



Beans: Drawer base cabinets include a cabinet door that opens to a compartment and has a single drawer at the top end



Spices: A spice is a seed, fruit, root, bark, or other plant substance primarily used for flavoring or coloring food.



Spoon & Forks: The tools you use to eat your food, including spoons, forks, and knives, are called silverware



Plates: Dinnerware is another term used to refer to tableware, and crockery refers to ceramic tableware, today often porcelain or bone china



Potato & Onion drawer: This is a potato and onion storage bin used for long term food storage of root vegetables.



Oil & Skimmers: Drawer with a low side typically located right next to the stove, and filled with things you would use while cooking such as olive oil, skimmer.



Pots: Keep your pots and pans drawer organized by adding bars or thin pieces of plywood large enough to fit your cookware and lids vertically.



Rices: Rice Bins are storage containers for rice. They keep rice dry, protect it from infestation, and extend shelf life.



Beans: Drawer base cabinets include a cabinet door that opens to a compartment and has a single drawer at the top end



Smeg Kitchen Appliance



Cooker with Ceramic Hob
90x60 cm
Classica Aesthetic
SCD91CMX9
Product Family
Cooker
Cooker size
90x60 cm
Aesthetic
Classica
Serie
Concerto

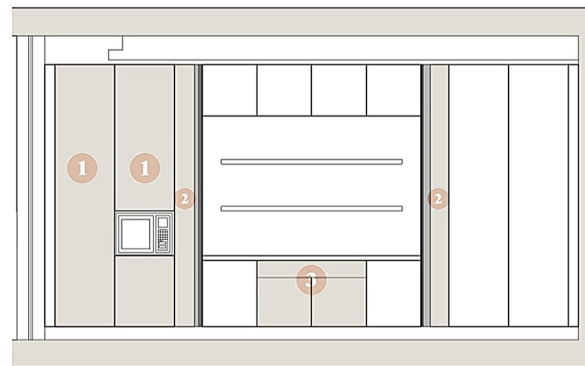


Smeg Sink
Width (mm):
897 mm
Frame depth (mm):
9
Undermount cutout radius:
10 mm
Frame thickness:
0.7 mm
Height from kitchen top:
10 mm
Cutout dimension topmount (mm):
860 x 480 mm



Kitchen Design Principles

The kitchen is where the magic happens. It's not only where we cook, but where we entertain friends and family, start our mornings and where we relax after a long day and our dinner. So given the importance of the kitchen, it should be designed and made to suit your specific needs. In this post we'll discover the two main kitchen design principles that will help you design a more efficient kitchen – called the work sequence and the kitchen triangle.



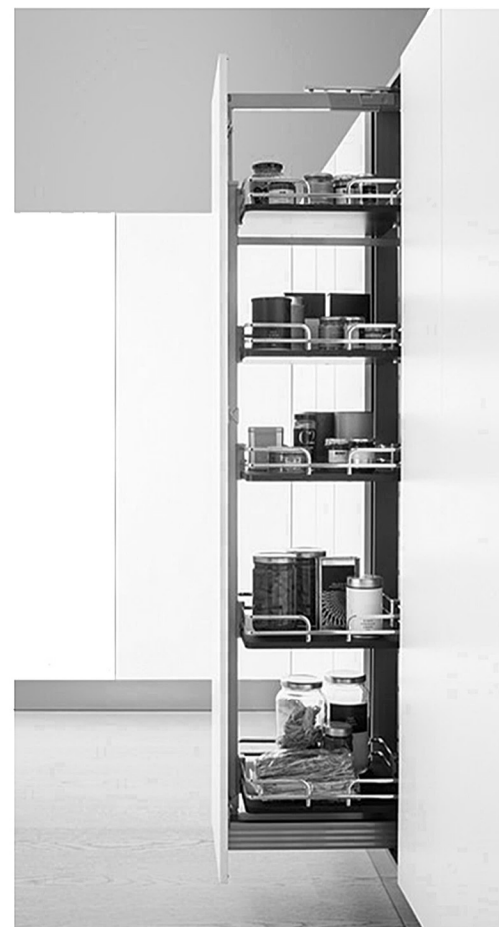
- 1 **Super Market:** a large retail market that sells food and other household goods and that is usually operated on a self-service basis.



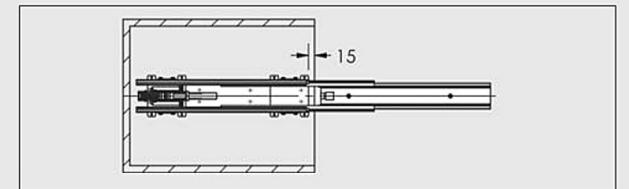
- 2 **Coffee , Bottle & Cans:** This holder is built to last with attention to detail and superior materials. The heat-resistant panel means you can safely place your coffee machine directly.



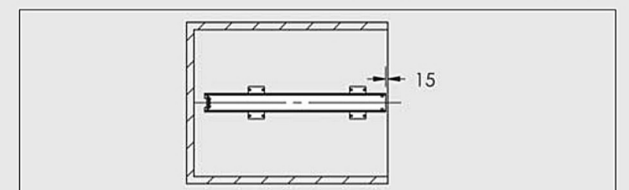
- 3 **Spoon & Forks:** The tools you use to eat your food, including spoons, forks, and knives, are called silverware



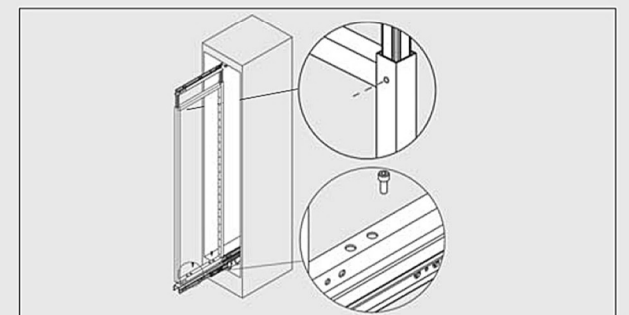
۱. برای نصب رانر پایین ابتدا کف یونیت را به دو قسمت مساوی تقسیم کنید سپس رانر را دقیقاً در مرکز آن نصب کنید



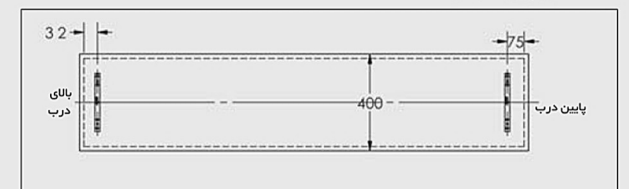
۲. سپس برای ریل بالا مانند مرحله قبل مراحل را تکرار کنید



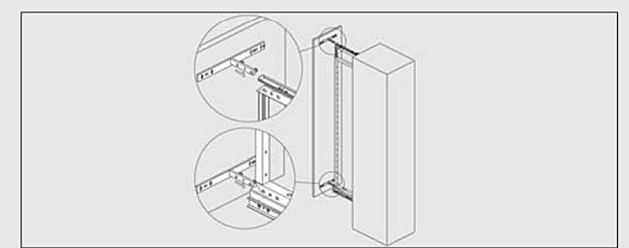
۳. مطابق تصویر فریم را جا بزنید و توسط پیچ های مخصوص آن را به رانر متصل کنید



۴. برای نصب پراکت های روی درب همانند رانر های بالا و پایین درب به دو قسمت مساوی تقسیم کنید و مانند تصویر پایین نصب کنید



۵. درب را مطابق تصویر جا بزنید



Electrical Equipment Cabinet



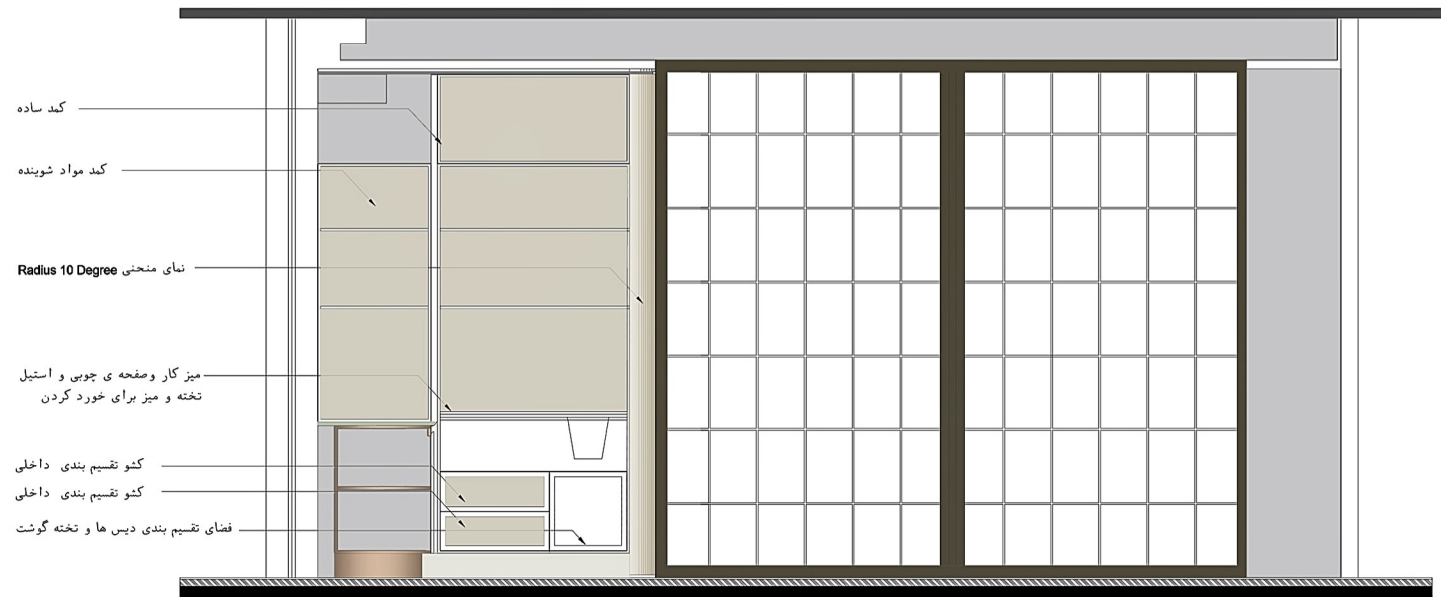
همزن دستی
Hand mixer
smeg Hmf01



آبمیوه گیری
Citrus juicer
smeg Cjf01



مخلوط کن
Stand mixer
smeg Smf02



Meat Mincer:
Allows you to grind and mince fresh meats, stuffings, and virtually any food into a desired consistency



Stand Mixer
Optimum planetary rotation which guarantees the best homogeneous and perfectly amalgamated mixture.



Milk frothers
The MFF01 can heat and/or froth milk to perfection so is ideal for making thick and creamy froth for your cappuccino, latte macchiato, and flat whites.



Blender
For a healthy fruit and yogurt smoothie for breakfast, to recuperate with a refreshing drink after a workout, or to prepare a quick and simple soup for lunch.



Citrus juicers
Smeg electric citrus juicer CJF01 combines elegant design and superb performance with reliability. This is really a citrus juicer to show off.

South Elevation Cabinet



1 کمد ساده جای بشقاب و دیس ها



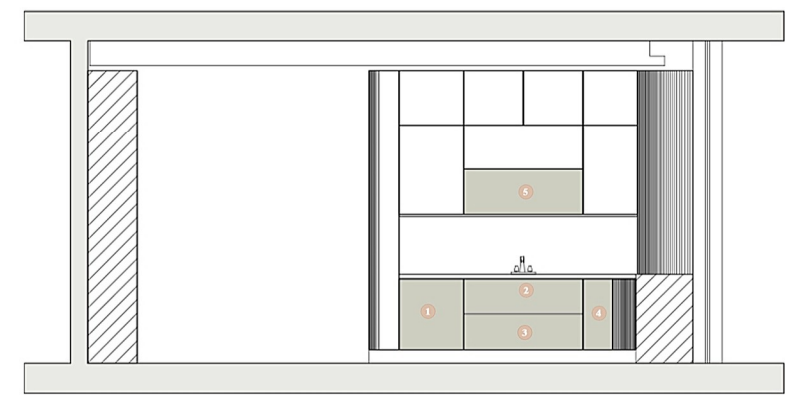
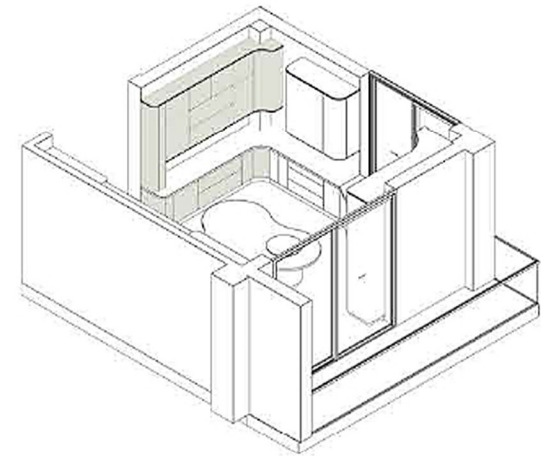
2 سوپرمارکت Fantoni-F440



3 جای نگهداری قاشق و چنگال



4 کشو جای بشقاب و پیش دستی ها



1



Dish Washer: A dishwasher is a machine that is used to clean dishware, cookware, and cutlery automatically. Unlike manual dishwashing, which relies heavily on physical scrubbing to remove

2



scouring pad : A or scourer is a small pad of metal or plastic mesh used for scouring a surface.

3



Trash Bin : A waste container, also known as a dustbin, garbage can, and trash can is a type of container that is usually made out of metal or plastic.

4

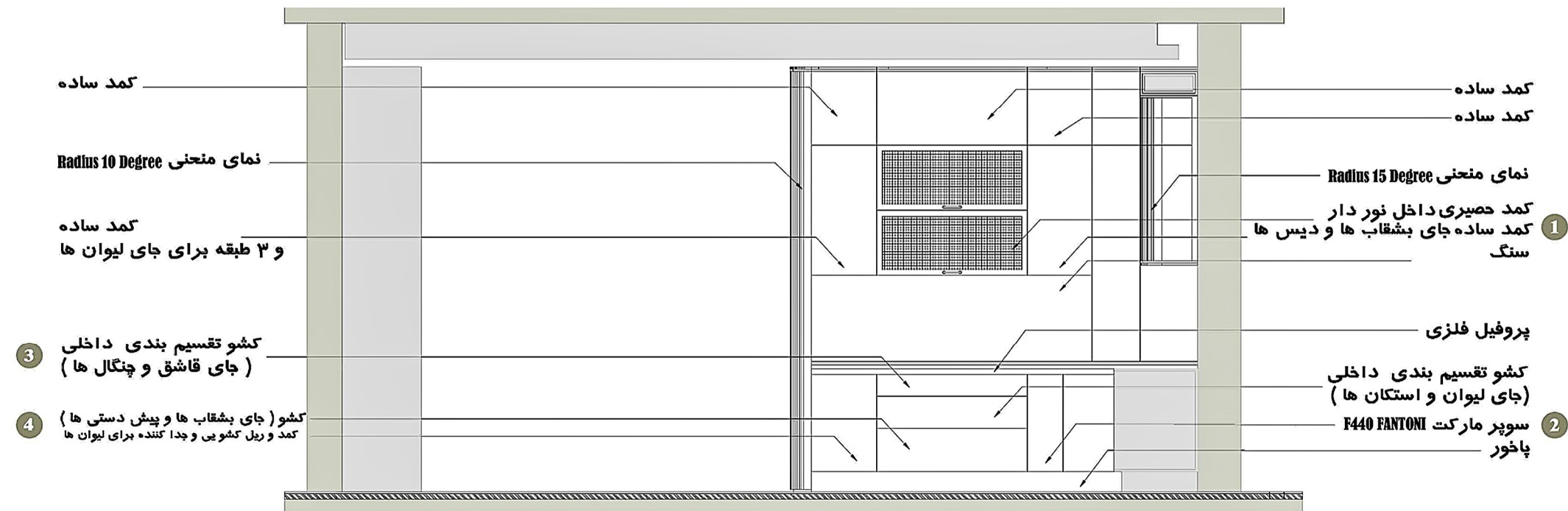


Household Cleaning Products : Tasks include mopping, vacuuming, dusting, polishing, sweeping

5



Dish Drainer: A rack near a sink on which washed dishes, etc are placed to drain.





DESIGN PRINCIPLES

The two main principles in kitchen design are the work sequence and the kitchen triangle. These are not building regulations that you absolutely must follow – just think of them as design guidelines to help you design a more efficient kitchen. To help us understand these principles a little better, we'll be using the kitchen floorplan below as our example.



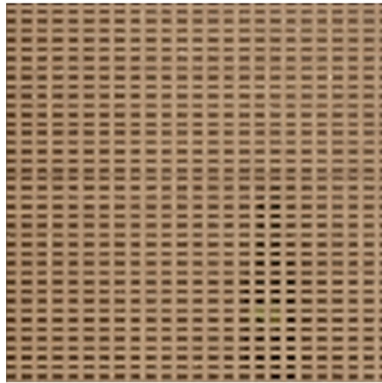
Design Intent

The aim here is to apply few well known design principles to come up with a practically efficient kitchen. By efficiency, I mean the level of ease you are able to carry out the daily tasks in the kitchen. Think of it like a natural flow from one task to another. Our imaginary client in this case is a family of three, who like to spend a lot of time in the kitchen either cooking or hosting dinner parties. Although the design will always vary according to each clients specific needs, there are some underlying principles that can be applied to any design.

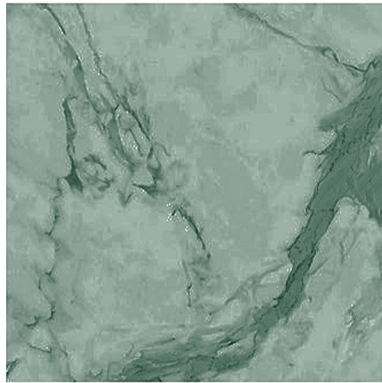
Material Palette



Natural Stone
The term natural stone refers to organic rock quarried from the earth for use as building material. It is a solid composition made up of one or more minerals formed thousands of years ago.



Wicker
Wicker is the oldest furniture making method known to history, dating as far back as 5,000 years ago. It was first documented in ancient Egypt using pliable plant material, but in modern times it is made from any pliable, easily woven material.



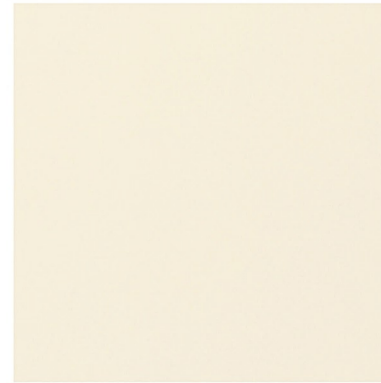
Green Marble
Decisive, ground-breaking and aiming to draw the gaze of every eye. For restless minds who understand that difference is a value in itself.



Ulmus Wood
Elms are deciduous and semi-deciduous trees comprising the genus *Ulmus* in the family *Ulmaceae*. They are distributed over most of the Northern Hemisphere, inhabiting the temperate and tropical-montane regions of



Marble
Marble is a rock resulting from metamorphism of sedimentary carbonate rocks, most commonly limestone or dolomite (rock).



Spanish MDF Sheet
MDF is traditionally made of wood fibers that have been broken down into residuals, then mixed with wax and resins and heat pressed into dense, durable sheets. A sheet of MDF will be heavy, smooth and even, with a flat surface that can be painted or sealed.





Molo cloud softlight
pendant paper lamp



Wooden Chair



Roman shade pardecore



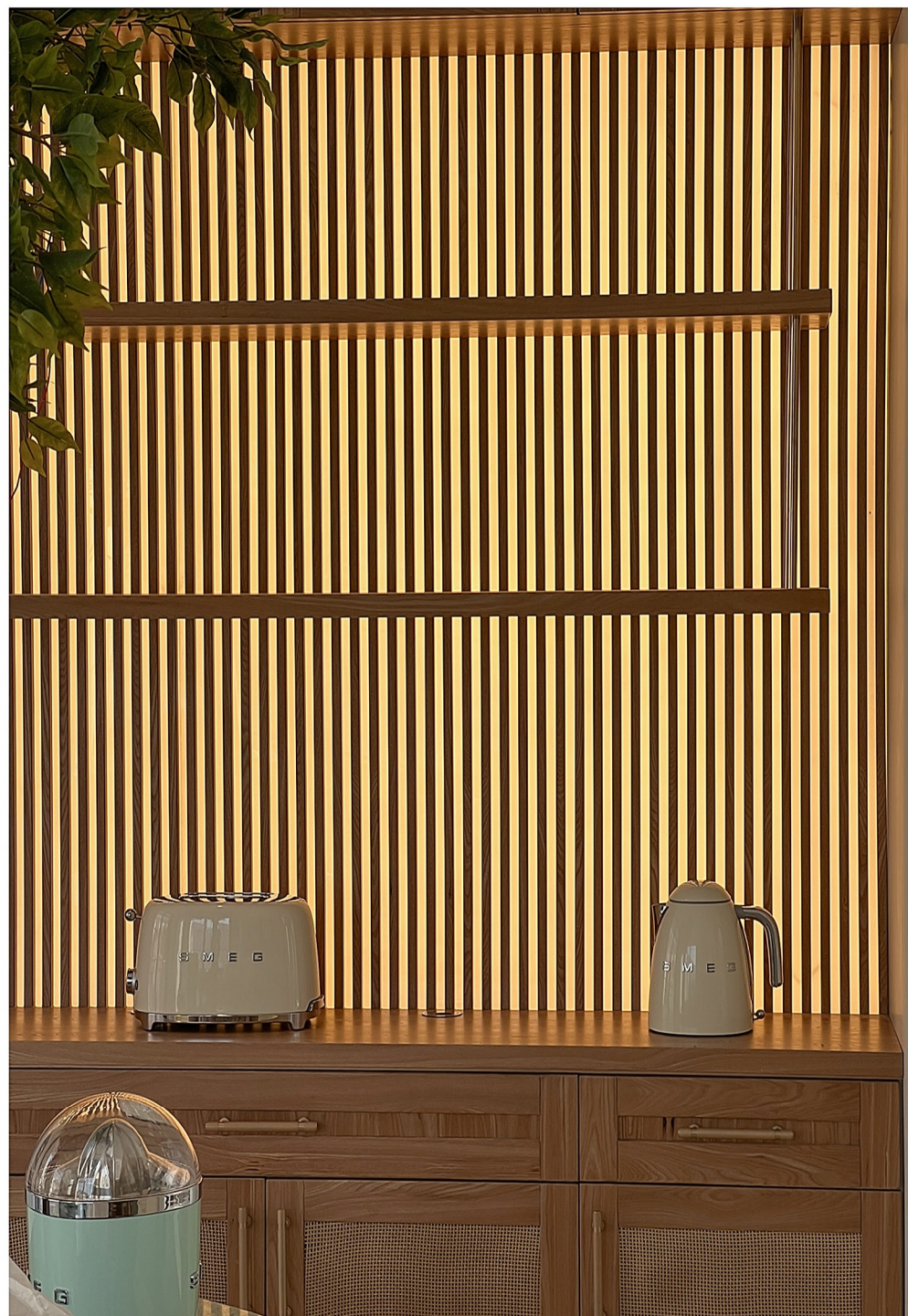
Weeping Fig
(*ficus benjamina*)

Vase



Other Details





BEDROOM DESIGN





- 1 Men Suits:** a set of men's garments of the same color and fabric, consisting of trousers, a jacket, and sometimes a vest.



- 2 Men Shoes:** A shoe is an item of footwear intended to protect and comfort the human foot. Though the human foot can adapt to varied terrains and climate conditions

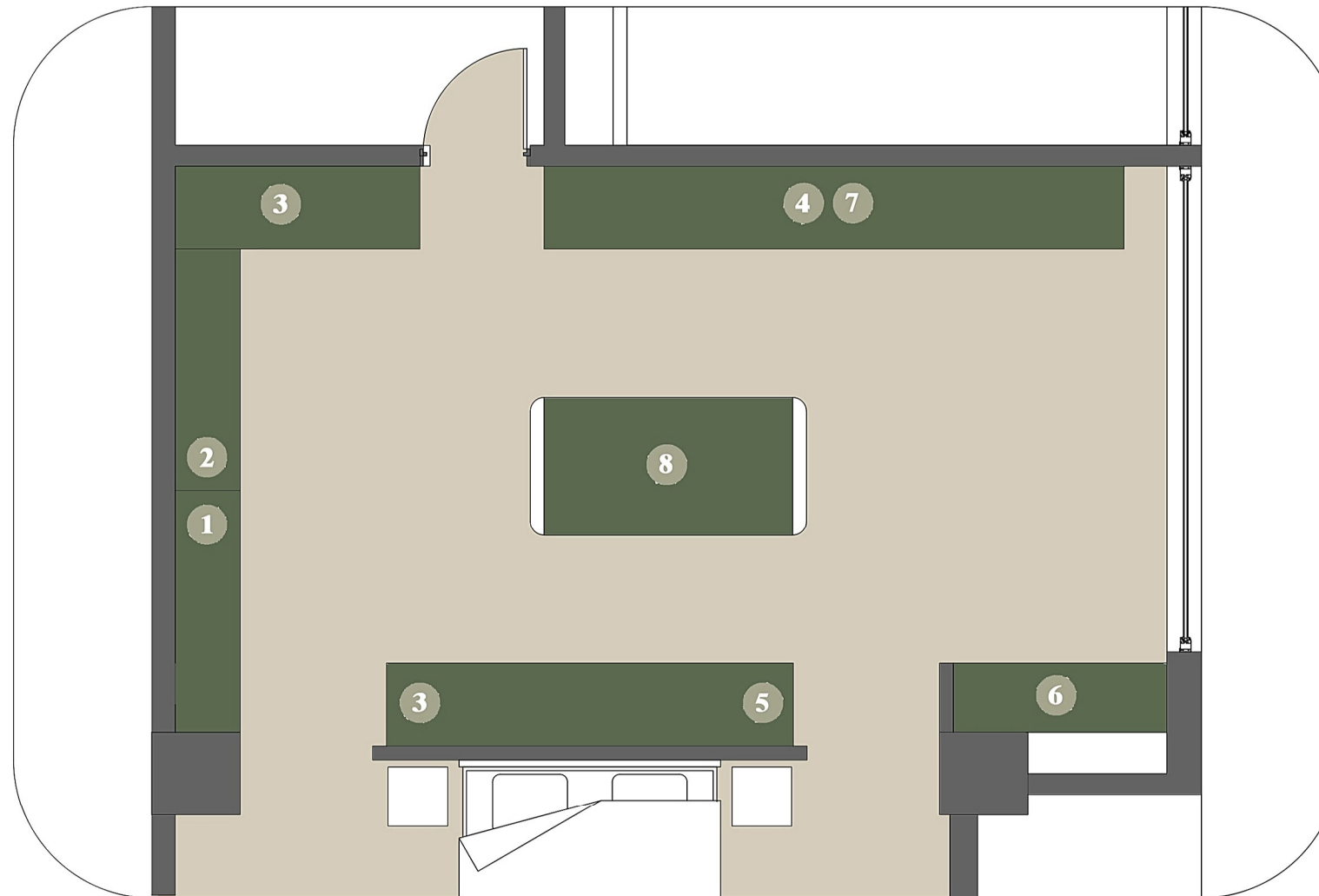


- 3 Men Casuals:** Jeans, dress shirt (casually turn down collared), and a T-shirt or sleeveless shirt are typically considered casual wear for men in modern times.

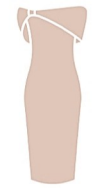


- 4 Women Shoes:** Every girl knows that sometimes when you can not afford diamonds, "shoes are a girl's best friend", or that if you need a new start in life,

Closet Organizing Detail



- 5 Women Purse:** a container used for carrying small personal items or accessories



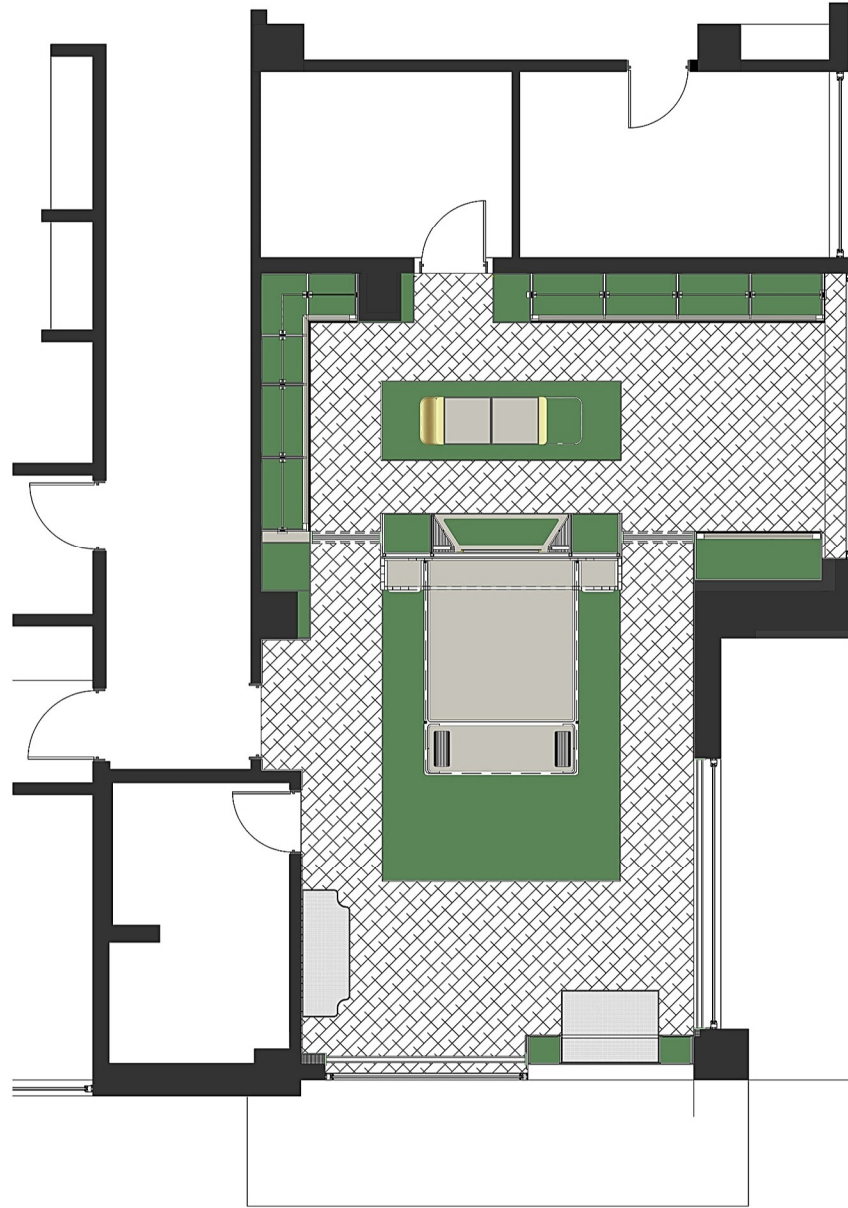
- 6 Women Dress:** a garment traditionally worn by women or girls consisting of a skirt with an attached bodice. It consists of a top piece that covers the torso and hangs down over the legs.



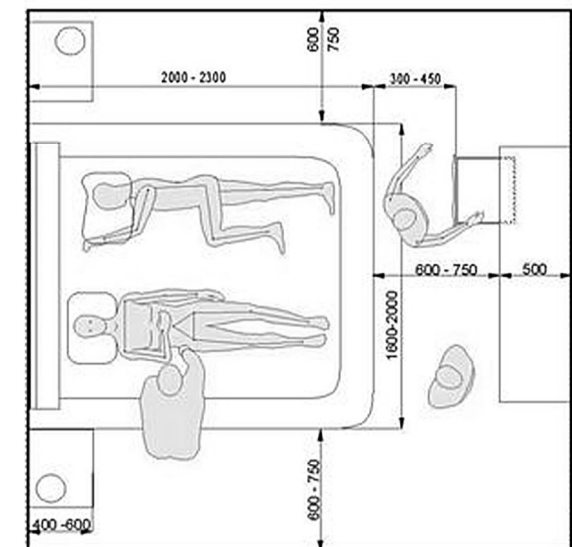
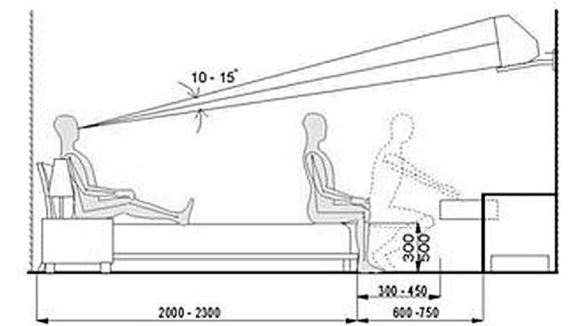
- 7 Women Casuals:** This includes jeans, sweaters, t-shirts, sneakers, flip-flops, sweats or gym clothes, stained clothes, heavily distressed or ripped items.



- 8 Accessories:** an accessory is an item used to contribute, in a secondary manner, to an individual's outfit. Accessories are often chosen to complete an outfit.



The National Center for Biotechnology Information advances science and health by providing access to biomedical and genomic information. You should also choose your bedding items based on personal criteria. Important considerations for selecting the best pillow include firmness, loft (thickness), and durability.



A relaxing environment is essential for a good night's rest. Studies have shown people simply sleep better when their bedroom is optimized for light and noise levels, temperature, and comfort. And since sleep quality and duration are directly tied to other aspects of human health, a bedroom environment that promotes sleep can also improve how you feel while you're awake.

Best of all, creating the ideal bedroom doesn't need to break the bank. There are several cost-effective ways to make your sleep space more soothing and suited for rest.

Depending on your sleep preferences, you may enjoy the close body contour of memory foam, the gentle support of latex, or the springy feel of a mattress with coils. Some studies have found that a newer mattress

Trusted Source
National Library of Medicine, Biotech Information



محل قرارگیری لباس ورزشی زنانه UNIHOPPER AP2175

محل قرارگیری لباس ورزشی مردانه UNIHOPPER AP2175

محل قرارگیری شال و روسری MELLONI 8018

محل قرارگیری کاپشن UNIHOPPER AP2175

محل قرارگیری وسایل ورزشی کشو ساده

محل قرارگیری لباس ورزشی زنانه کشو ساده

محل قرارگیری لباس ورزشی زنانه کشو ساده

محل قرارگیری شال گردن و دستکش زمستانه زنانه (باید ساخته شود)

محل قرارگیری شال گردن و دستکش زمستانه زنانه (باید ساخته شود)

محل قرارگیری شال گردن و دستکش زمستانه زنانه (باید ساخته شود)

محل قرارگیری لباس ورزشی زنانه کشو ساده

محل قرارگیری شلوار زنانه UNIHOPPER WS4161

محل قرارگیری کفش ورزشی زنانه (باید ساخته شود)



UNIHOPPER WS4159

محل قرارگیری لباس ورزشی مردانه کشو ساده

محل قرارگیری لباس ورزشی مردانه کشو ساده

محل قرارگیری لباس ورزشی مردانه کشو ساده

محل قرارگیری لباس ورزشی مردانه UNIHOPPER WS4162

(باید ساخته شود)

محل قرارگیری چمدان

محل قرارگیری پیرهن زنانه UNIHOPPER AP2175

محل قرارگیری مانتو پالتو و بارانی زنانه UNIHOPPER AP2175

محل قرارگیری پیرهن زنانه UNIHOPPER AP2175

محل قرارگیری پیرهن زنانه MELONI WS4158

محل قرارگیری شلوار زنانه MELONI WS4161

جایگاه قرارگیری بافت زنانه UNIHOPPER WS4158

جایگاه قرارگیری بافت زنانه UNIHOPPER WS4117L

محل قرارگیری تیشرت خانگی زنانه کشوی ساده

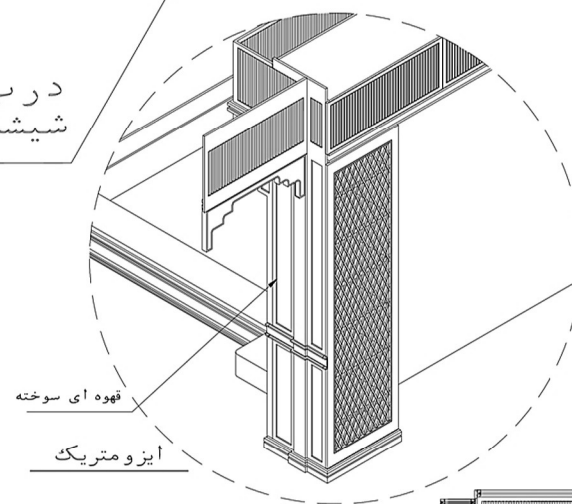
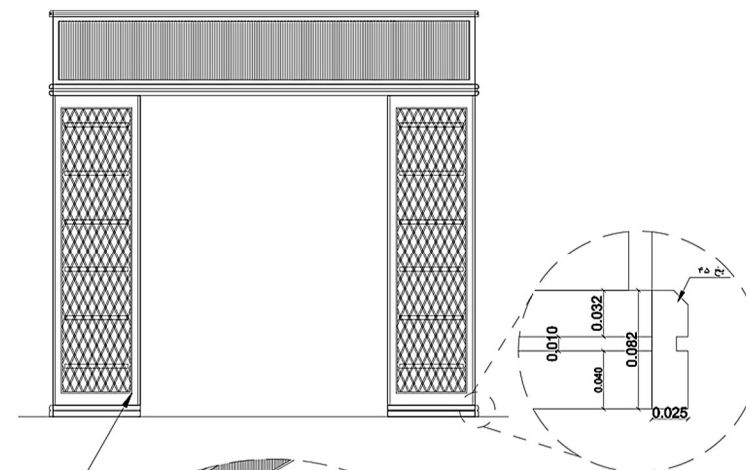
محل قرارگیری شلوار خانگی زنانه کشوی ساده

محل قرارگیری لباس زیر زنانه UNIHOPPER WS4162

محل قرارگیری کفش زنانه (باید ساخته شود)



درب شیشه دار
شیشه ۶ میلیمتری



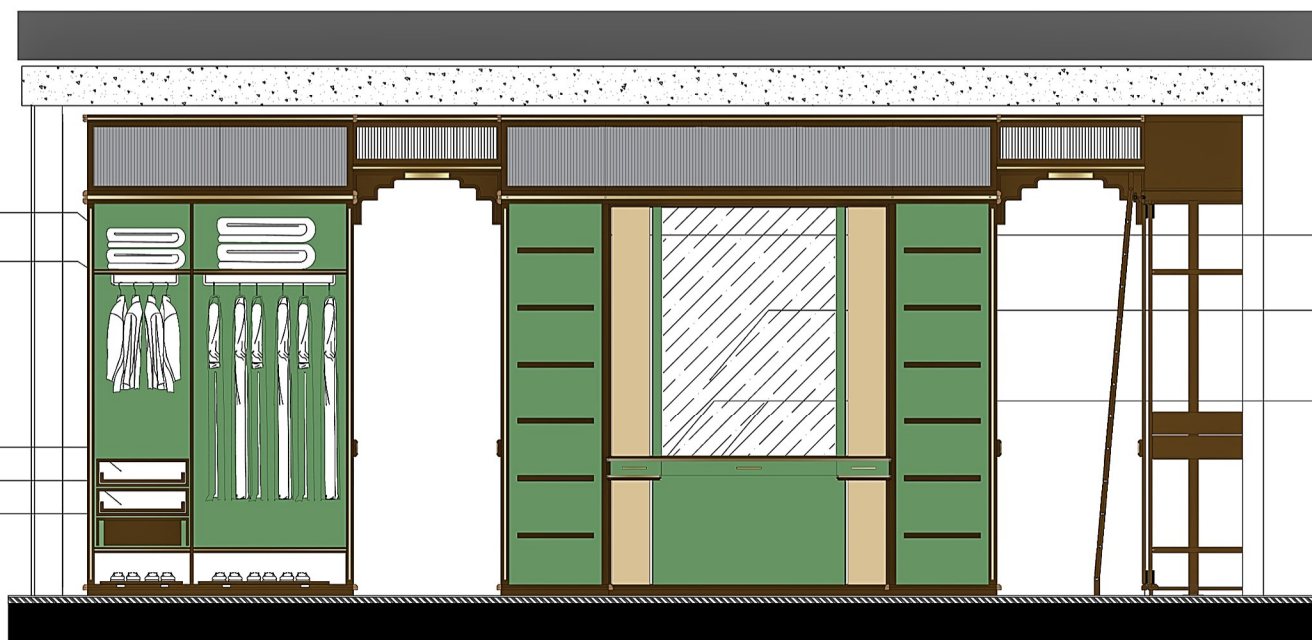
محل قرارگیری چمدان

محل قرارگیری لباس های مجلسی UNIHOPPER EP2175

محل قرارگیری پیرهن زنانه کشوی ساده

محل قرارگیری پیرهن زنانه کشوی ساده

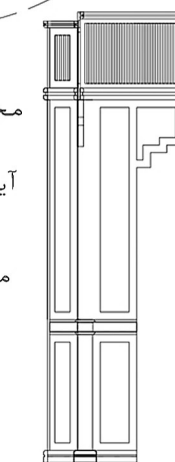
محل قرارگیری پیرهن زنانه UNIHOPPER WS4162



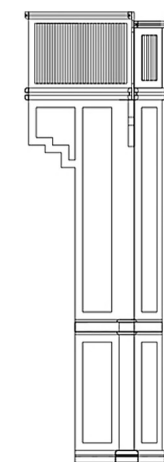
محل قرارگیری کیف زنانه و مردانه (باید ساخته شود)

آینه

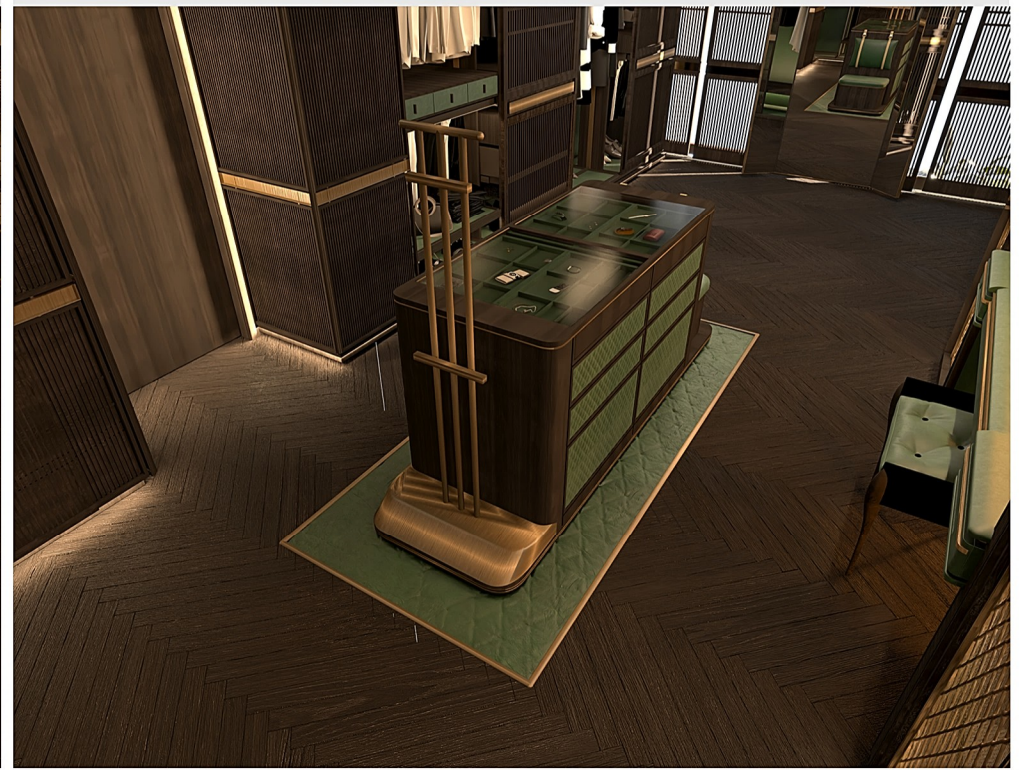
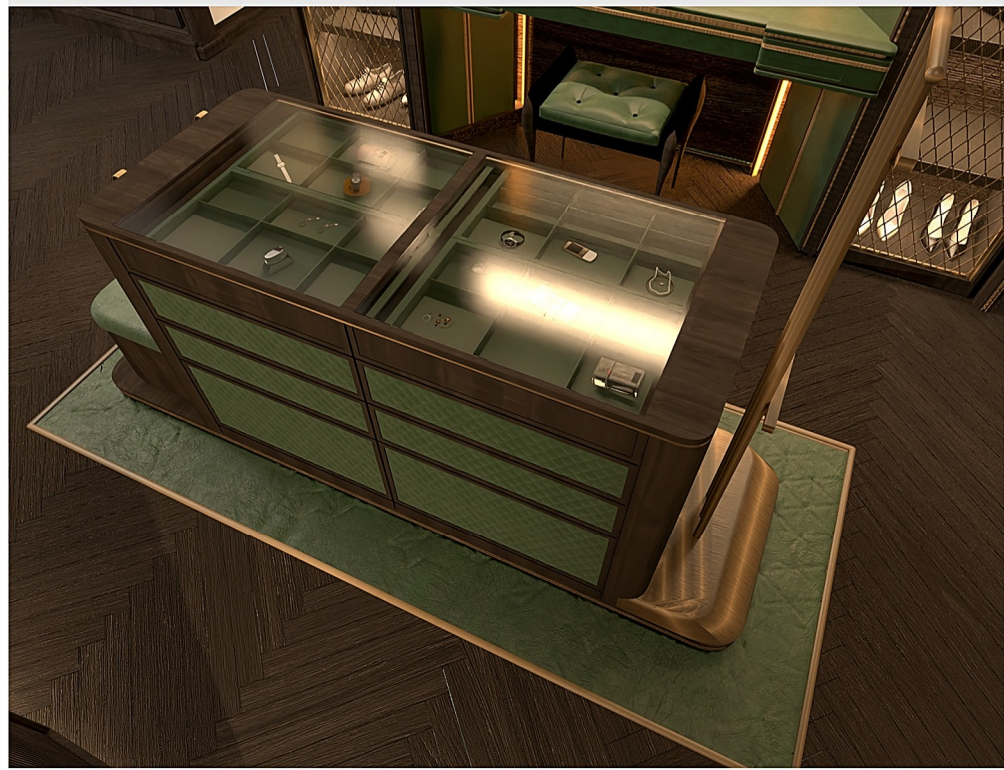
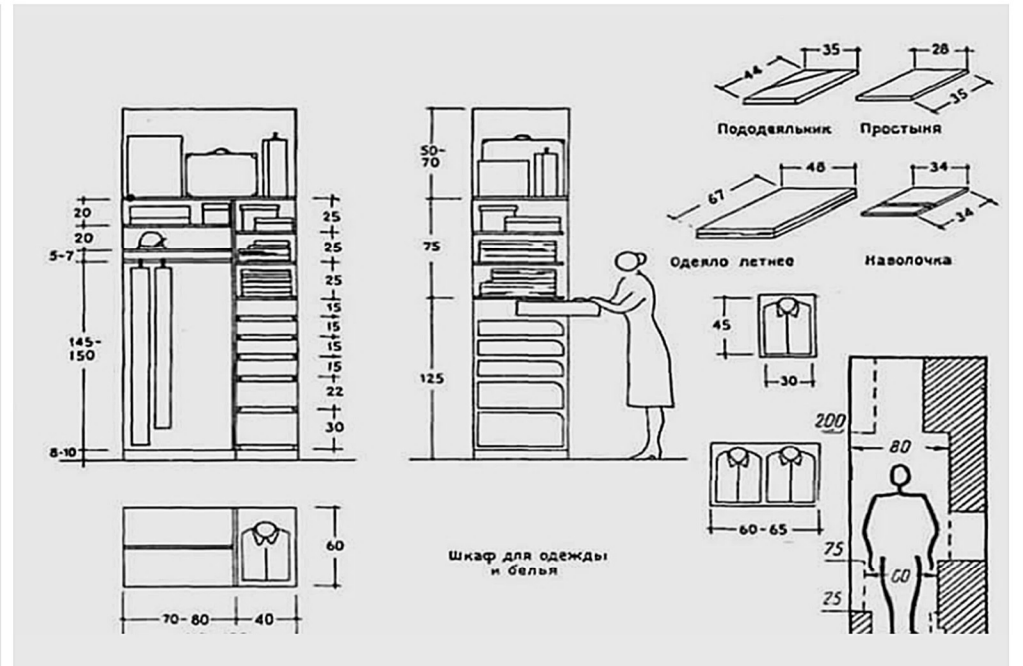
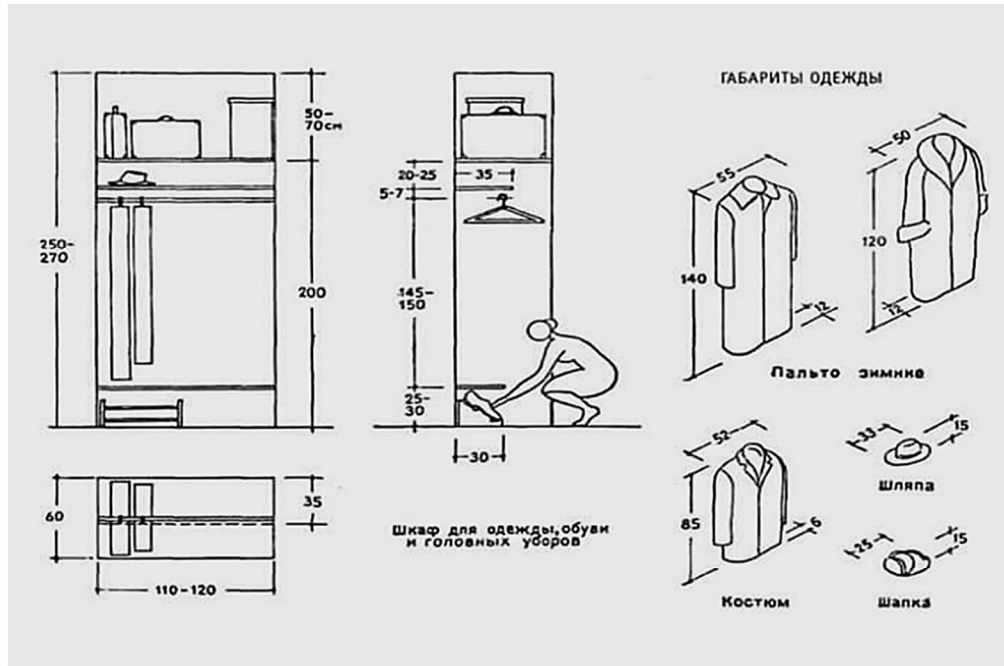
محل قرارگیری زیور آلات



نمای A



نمای B







Design Principles

Indochine style, also known as Indochinese style, is an interior design style with a timeless architectural style that expresses traditional Asian culture while romantically blending with ancient French architecture. Indochine Style is the collision of the identities of East and West, resulting in a new modern interior design style with high aesthetics, by art philosophy, and displaying the quintessence, identity, and history of these two ancient civilizations.



