

narges khalili



Elderly Cohousing Community

Location Isfahan

Design year 2025

Project area 3700 m²

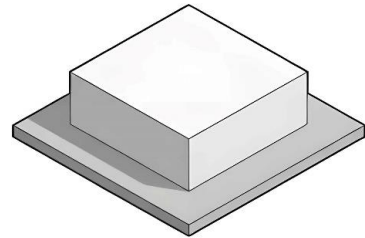
Elderly Cohousing Community With the rise in life expectancy and the aging population in Iran, creating supportive social spaces for seniors is more critical than ever. This project focuses on designing an elderly cohousing community in Isfahan, emphasizing "spatial sociability" from a futuristic perspective.

The goal is to create an environment that enhances life expectancy, health, and happiness through architectural solutions. Key design strategies include optimal spatial organization, modular units, ergonomic standards, and the integration of green spaces. By fostering extensive social interaction and connecting residents with nature, the design aims to combat isolation and promote a vibrant, communal lifestyle.

Consept Develop

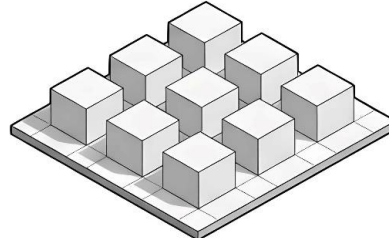
MODULAR ECO-COMMUNITY CONCEPT PROCESS

1. BASIC VOLUME (THE BOX)



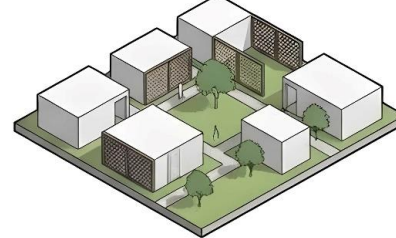
Start with a simple volume.

2. FRAGMENTATION & GRID



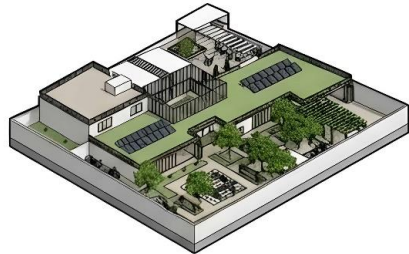
Division into modular units and grid.

3. SPACE TYPES & COURTYARD



Combination of closed, semi-open, and open spaces.

4. GREEN INTEGRATION & CIRCULATION



Integration of nature and circulation paths.

5. ARCHITECTURAL FORM



Final architectural form shaping.

6. COMPLETE COMMUNITY

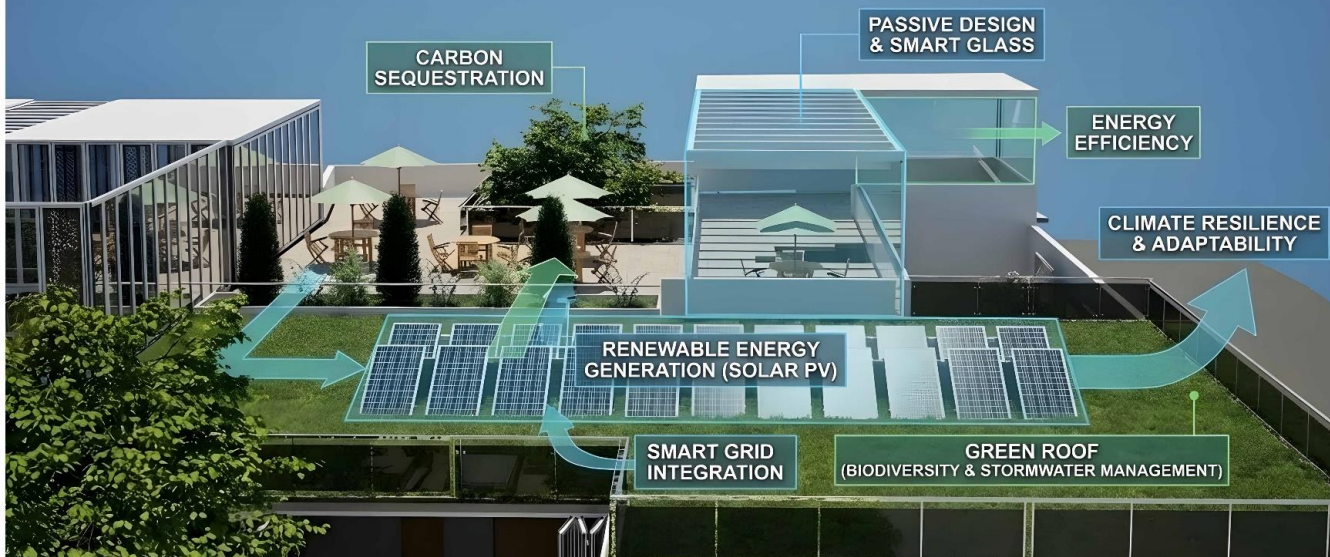


Complete sustainable community assembly.

Sustainable in Viwe



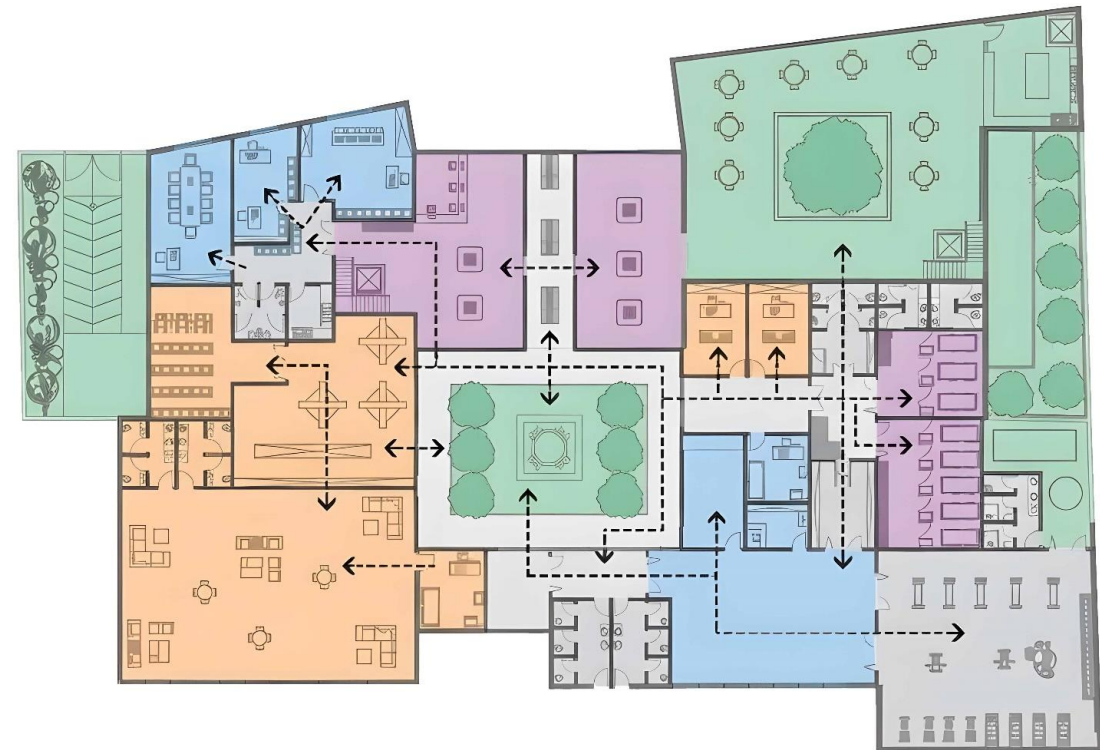
FUTURE-PROOFING & SUSTAINABLE ARCHITECTURE



Elderly Cohousing



SECOND FLOOR 2



FIRST FLOOR 1

- Clinic/Medical
- Courtyard
- Cafe/Dining
- Offices
- Meeting rooms
- Service

Central Courtyard-Based Design

The courtyard serves as the main social core, providing a calm and pleasant environment.

Clear Functional Zoning

Quiet spaces (library, counseling) are separated from active areas (café, multipurpose hall), with therapeutic zones placed in low-traffic areas.

Accessible & Efficient Circulation

Direct, simple circulation paths, along with well-positioned parking and ramps, support elderly accessibility.

Enhanced Social Interaction

Strong connections between the multipurpose hall, café, and outdoor spaces encourage social engagement.

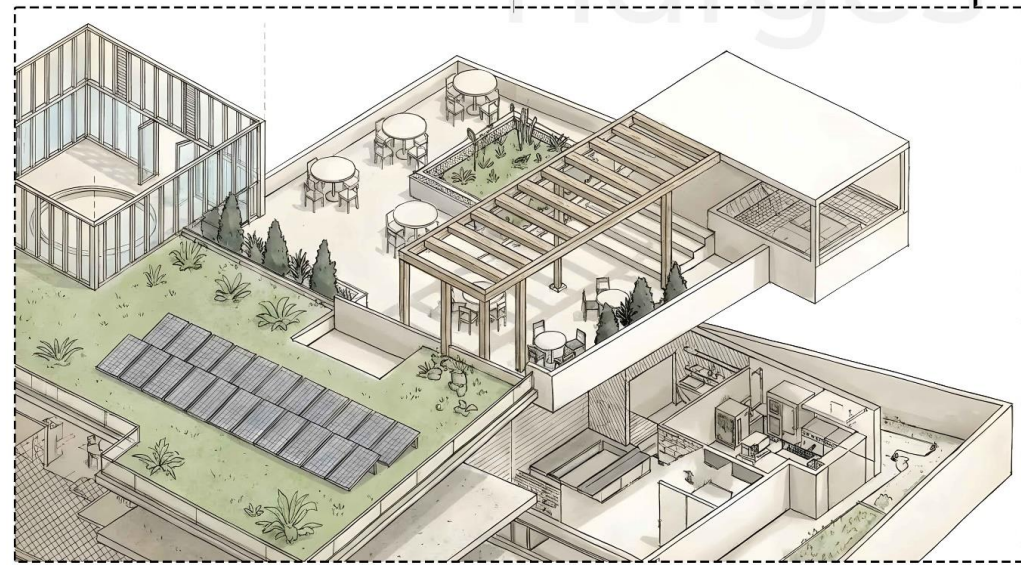
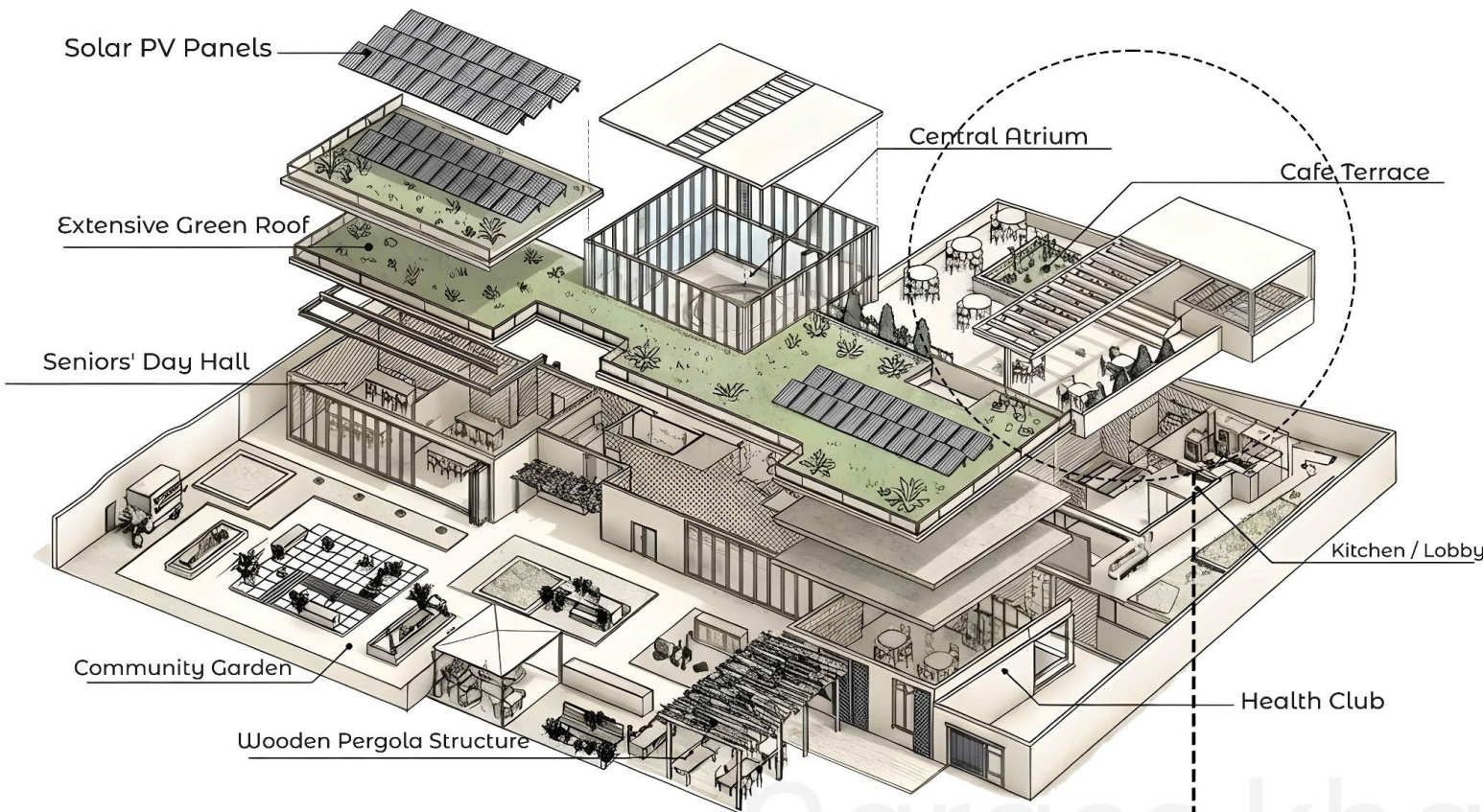


SECTION A-A



SECTION B-B

Interior Design Of Elderly Cohousing



Cafe Terrace Of Elderly Cohousing

