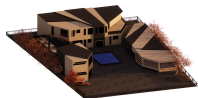
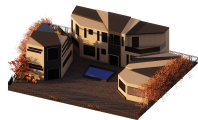
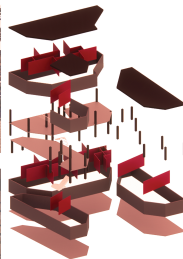
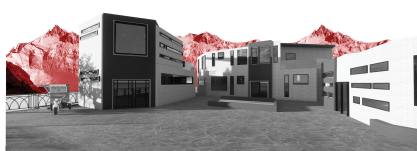


PANGAN COMPLEX

Location: Sangan Village, Tehran County
 Submission To: Islamic Azad University, Science and Research Branch
 Date: 1404/9/29
 Group: Red Studio
 Members: Paria Abolghasemi, Yashar Eftehmi, Dorsa Azimzadeh, Amirhossein Masoudi, Mohammad Maleki

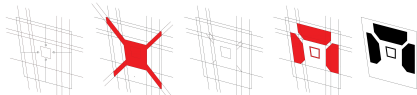


road analysis

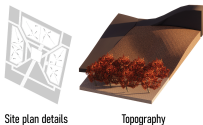
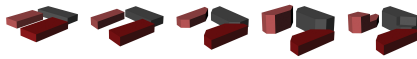
site analysis

height analysis

High-rise buildings
 Medium-rise
 Residential



In this design, three cubes are used to separate three spaces with different functions. Based on the site lines, modifications were made to the cubic volumes so that the massing aligns with the site plan. Terraces were carved out of the volumes to provide proper natural lighting from the north and south.



Site plan details

Topography

S

- Good views of the landscape
- Nice site shape and geometry

W

- Sloped land
- Uneven ground and topography

O

- Close to the main street
- Easy access to services

T

- Close to the main street
- Easy access to services

N



E



S



W



Brick

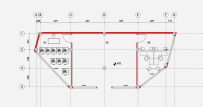
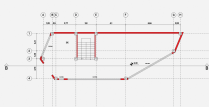
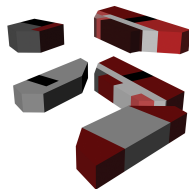
The use of black cement helps absorb more heat during cold seasons, creates an appealing color combination with the brick used in the building façade, and reflects a rough texture that closely relates to the rural fabric of the village.

Black cement

The use of brick enhances harmony with the predominant materials of the village's old fabric and also reflects elements of traditional Iranian architecture.

Aluminium

Granite



- 1 Classroom
- 2 Kitchen
- 3 Bedroom / Bathroom
- 4 Junior's Closet / Cleaning Supplies Room
- 5 Mechanical Room / Utilities Room
- 6 Library
- 7 Teacher's Room / Staff Room
- 8 Counseling Office
- 9 Management Office / Principals Office
- 10 Entrance
- 11 Handicraft Classroom
- 12 Handicraft Shop / Handicraft Store
- 13 Artist Workshop
- 14 Gallery
- 15 Café Bar / Coffee Bar
- 16 Enclosed Seating Area
- 17 Open Seating Area

