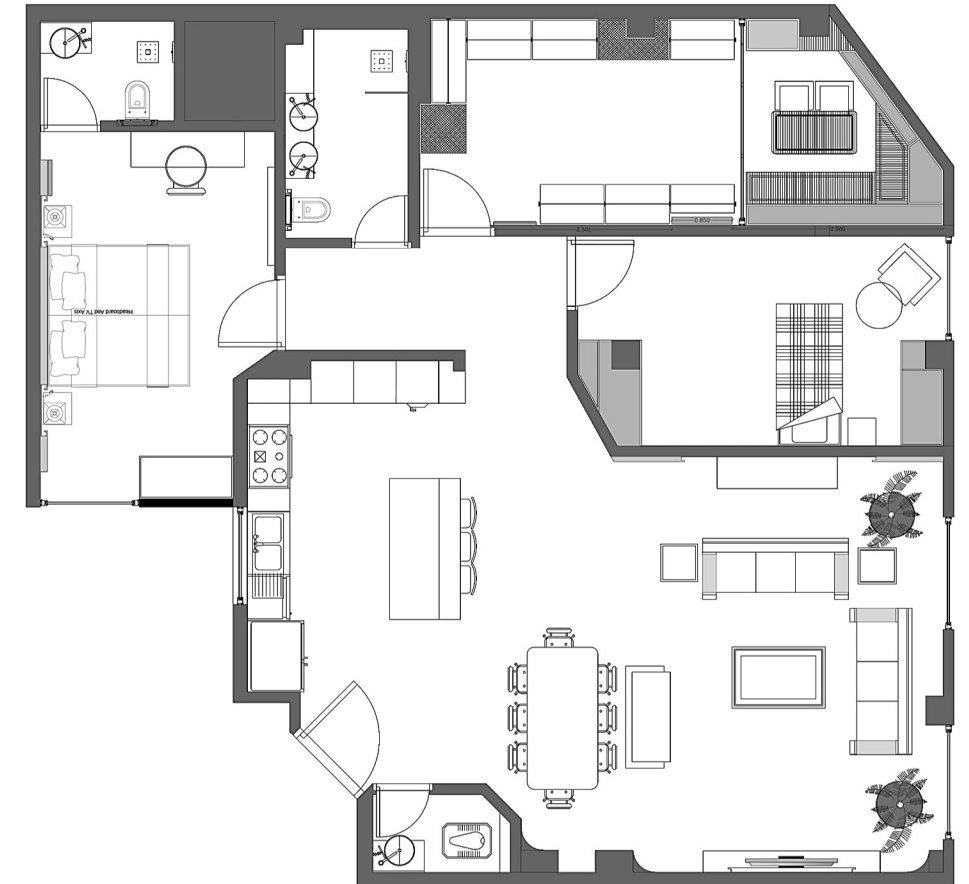




Neoclassical interior design is a formal, symmetrical style inspired by ancient Greek and Roman architecture and art, emphasizing clean lines, proportion, and balance

It features a neutral color palette with metallic accents, classical architectural elements like columns and pediments, and high-quality, natural materials such as marble and glass



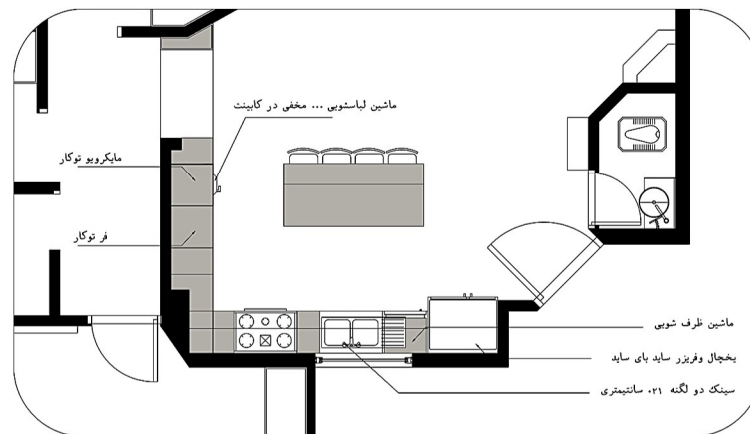
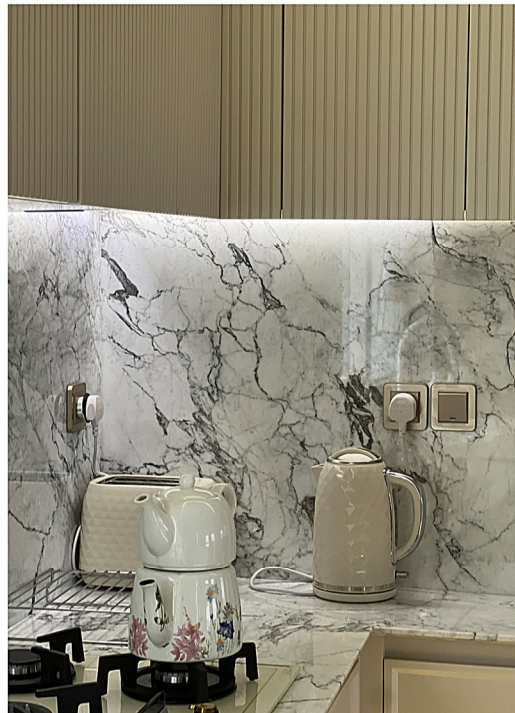


The style is characterized by a sense of order, dignity, and understated luxury, incorporating elements like panelling, sophisticated furniture, and decorative accessories like statues and urns









:Symmetry and Balance

A core principle, with structured layouts and balanced arrangements of furniture and decorative elements

:Classical Influences

Draws on ancient Greek and Roman architecture, seen in columns, arches, pediments, and classical motifs

:Clean Lines & Proportion

Focuses on simple, straight lines and a sense of order and proportion in architecture and furniture

:Neutral Color Palette

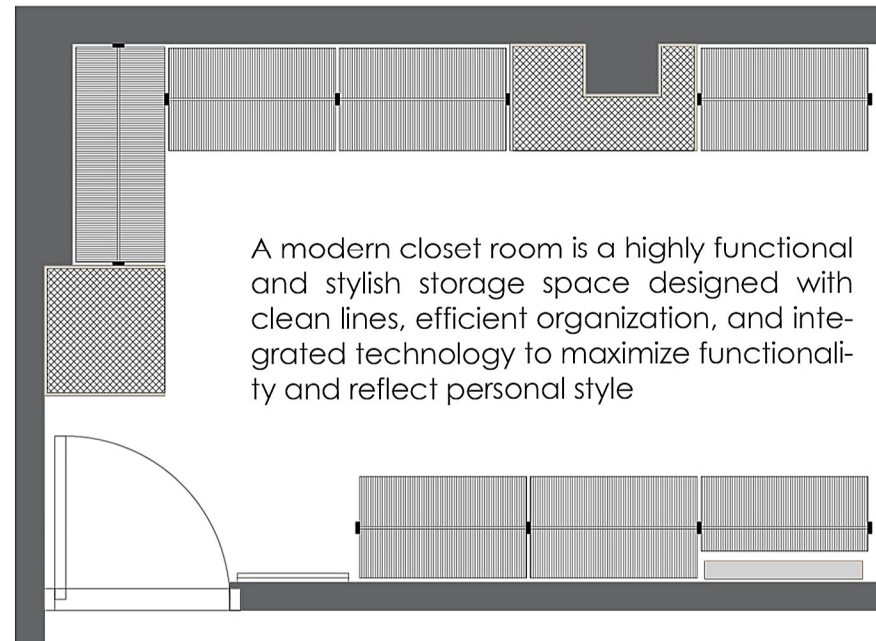
Features muted, soft colors like whites, creams, grays, often with black, accents

:Natural Materials

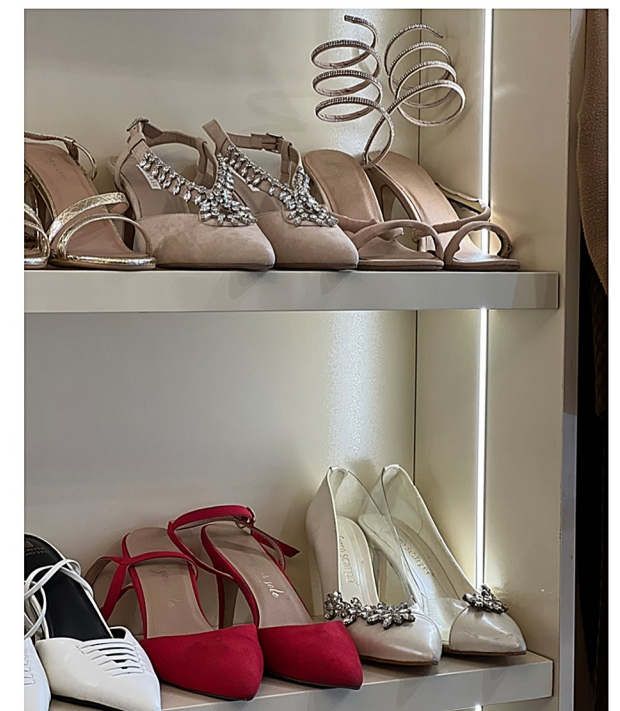
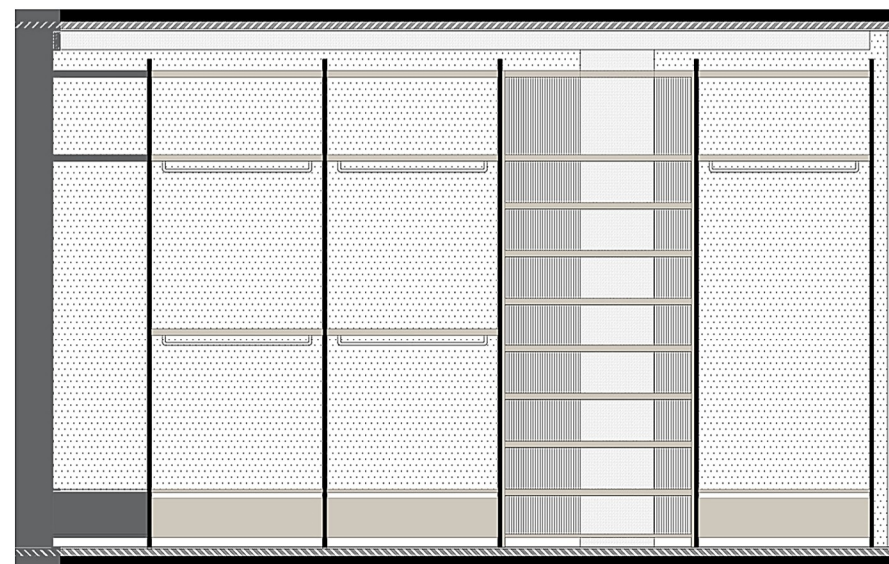
Utilizes high-quality, natural materials like marble, wood, and crystal and glass for floors, furniture, and accessories

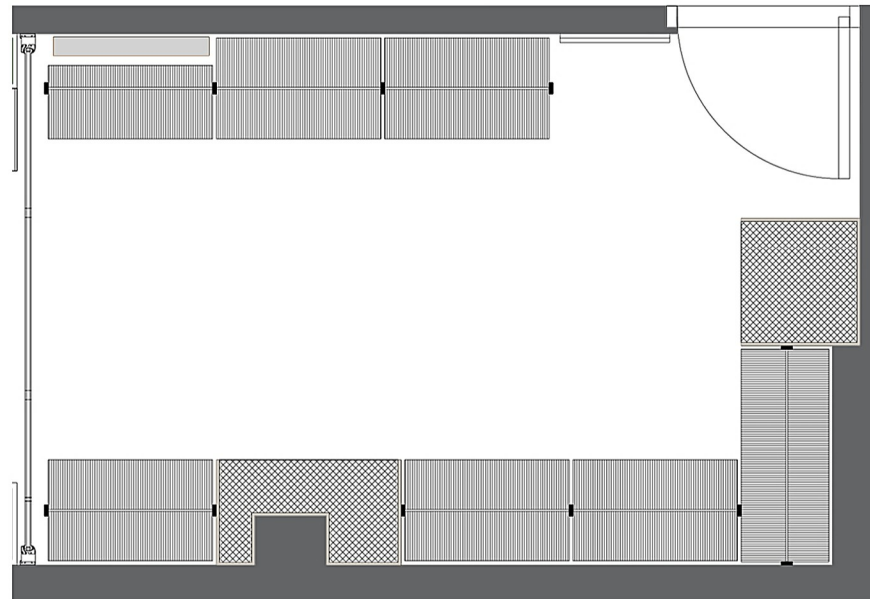






It features customizable, adjustable shelving, pull-out drawers, and specialized compartments, along with smart features like integrated lighting and valet rods.





:Clean Lines & Minimalism

Modern designs prioritize simplicity and geometric shapes, using a neutral color palette for a calming and streamlined aesthetic

:Smart Storage Solutions

Customizable systems with adjustable shelving, pull-out drawers, and specialized racks for accessories, shoes, and bags ensure everything has its designated place





:Integrated Technology

LED lighting illuminates the space for better visibility, while features like valet rods help organize outfits and soft-close drawer mechanisms provide a smooth, quiet experience

:High-Quality Materials

Materials such as polished wood, glass, and metal accents are often used to create a sophisticated and luxurious feel

:Efficient Layout

The layout is designed for maximum space utilization, often including elements like central islands, corner shelves, and tiered hanging sections for different clothing lengths

:Aesthetic Appeal

The closet functions as a personal sanctuary, blending form and function with thoughtful details and a focus on .personal style





:Enhanced Organization

Clever storage systems keep clothes and accessories neatly categorized and easily accessible

.

:Increased Functionality

Features like built-in ironing boards and valet rods streamline daily routines

.

:Improved Aesthetics

The clean, minimalist design complements the overall bedroom aesthetic and creates a more tranquil environment

.

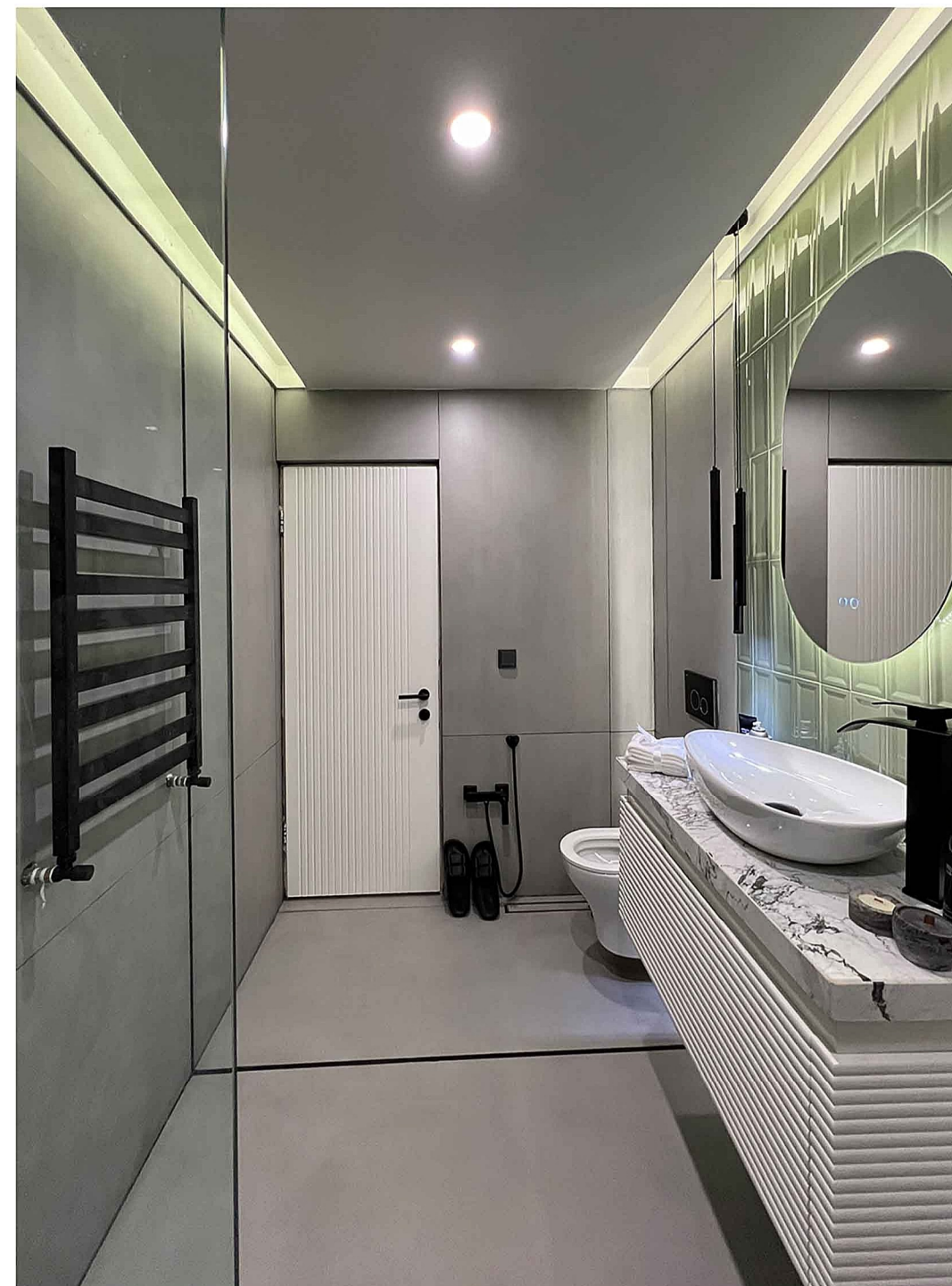
:Added Home Value

A well-designed modern closet can significantly increase the value of a home





Complete the look of a clean and contemporary bathroom with a calming green colour scheme that softens hard lines and adds a sense of tranquility to the room. If you're looking to bring life to your space, there's one colour that always flourishes. Green paint is a lush and uplifting choice for every room of the house.





Try soft green tones like mint or forest, paired with white or sandy-colored accents to create a coastal-inspired bathroom. Keep things light and breezy with furniture in gray ceramic, and add a pinch of forest charm—maybe a modern mirror or light detail.



Channel the glamour of the roaring 1920s by introducing emerald or deep forest green tiles in geometric patterns like chevron or herringbone. Pair them with black lacquered finishes, black light fixtures, and mirrors. Stick to a refined palette of green, white, and black—it's all about keeping it classy, not chaotic.



Keep things clean and uncluttered with soft green walls or accent pieces like a green vanity. The fixtures? Sleek, simple, and fuss-free—matte black or chrome will do the trick. Skip the heavy textures; instead, let minimalist art or a strategically placed plant do the talking. The result? A serene, spa-like escape.



There's something irresistible about the drama of dark green. Go bold with hues like white or light gray for your walls, tiles, or cabinetry. Pair them with black fixtures that bring a warm, glowing contrast. Balance the depth with lighter touches—mirrors, glossy tiles, or even soft lighting.



Interior accessory design involves selecting and arranging non-essential, movable decorative items like pillows, artwork, lamps, and plants to .add personality, color, and style to a space



These elements serve both functional and aesthetic purposes, enhancing the overall theme, creating focal points, and reflecting the owner's unique taste, ultimately transforming a room .from unfinished to complete and inviting



:Personal Expression
Accessories allow individuals to express their unique tastes, personality, and lifestyle within a .space
:Aesthetic Enhancement
They add depth, character, color, texture, and pattern to a room, making it more vibrant and .engaging



Decorative Objects: Vases, sculptures, candles, .bowls, and photographs
Textiles: Cushions, rugs, curtains, bedsheets, and .throws
Lighting: Decorative lamps and lighting fixtures that serve both functional and aesthetic pur- .poses



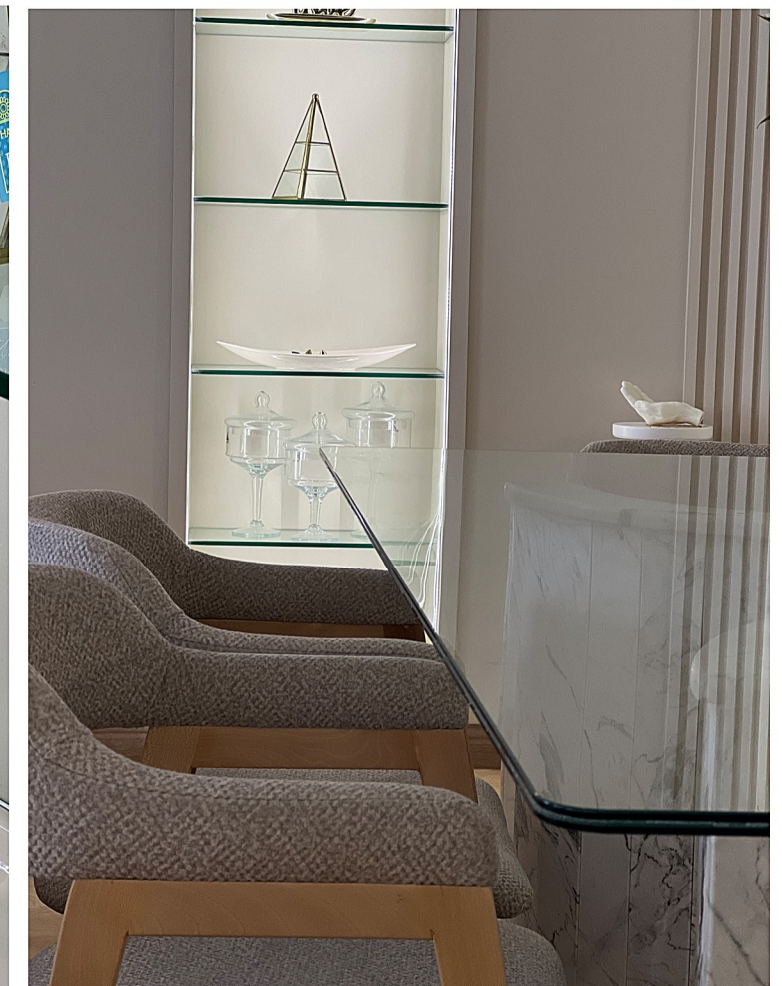
Wall Art: Pictures, maps, mirrors, and wall hangings
Living Elements: Indoor plants can add life and a natural touch to a space



:Completing a Space
Accessories provide the "finishing touches" that make a room feel complete, finished, and lived-in, rather than bare or transient



:Unifying a Design Scheme
They help to tie together different design elements and can create a cohesive look across an entire home



Functional Items: Books, waste baskets, and other items that serve a purpose while also contributing to the decor



:Complementary Choices

Select accessories that complement the overall theme, color palette, and existing design elements of the room



:Balance and Harmony

Arrange accessories to create balance and harmony, ensuring a complete and unified aesthetic



:Focal Points

Use accessories to create or highlight focal points within a room, drawing attention to specific areas



:Considerations

Think about the lifestyle of the people who inhabit the space when choosing accessories



Beautiful home decor is a perfect marriage of different elements and accessories. The design process is a recipe of perfect proportions and ultimately provides scrumptious results. Apart from the basics of interiors, accessories are essential for taking the design to the next level



A simple and basic space can be completely transformed fashionably into a modern and chic area with the right accessories. Accessories are a reflection of style, trend, and personality. The accessories – like wall art, decorative lamps, planters, and mirrors – must contribute meaningfully to the overall design



Adding accessories to your interiors gives it a splash of style and trend. Identifying the latest accessories keeps you up with what's dominating the market, and adding them to your home design brings that chicness. The interior design world is getting more and more creative and innovative



With the latest design style trends shaping customer choices, selecting the right accessories is important. Some great ideas to add chicness to any space include adding art pieces, woven rugs, funky lamps, vases, or textured curtains in new colors. A gallery wall adds the perfect finishing touches to your living space