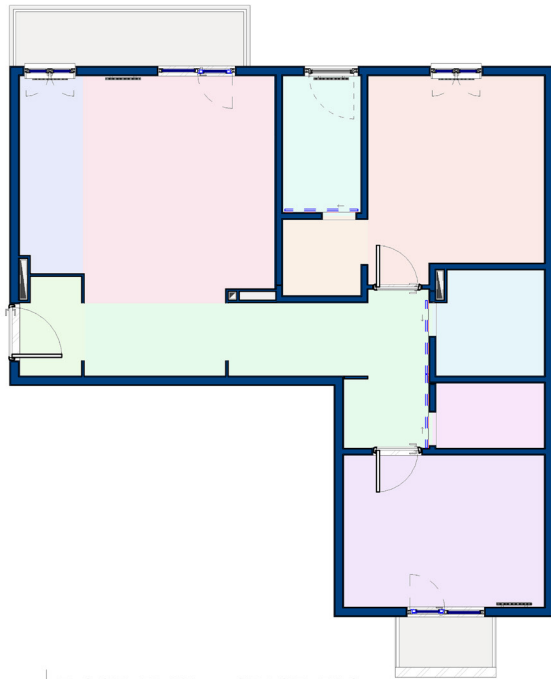


**GOPILLAR**



**BOLOGNA**



#### SPACE TAG

- BATH - PRIVATE
- BATHROOM
- ENTRANCE
- HALL
- KITCHEN
- LAUNDRY
- LIVING & DINING ROOM
- ROOM 1
- ROOM 2 - WORK STUDIO
- WALKING CLOSET

A bathroom has been added to the space.

The house's large and elongated bathroom was relocated to the master bedroom to create a private zone, and the walk-in closet was positioned adjacent to this service area.

Entrance space: a transitional filter between outside and inside the house, providing an area for clothing and shoes.

A transitional/pass-through space that, through the placement of a cabinet, console, and bookshelf, has been transformed into a functional area.

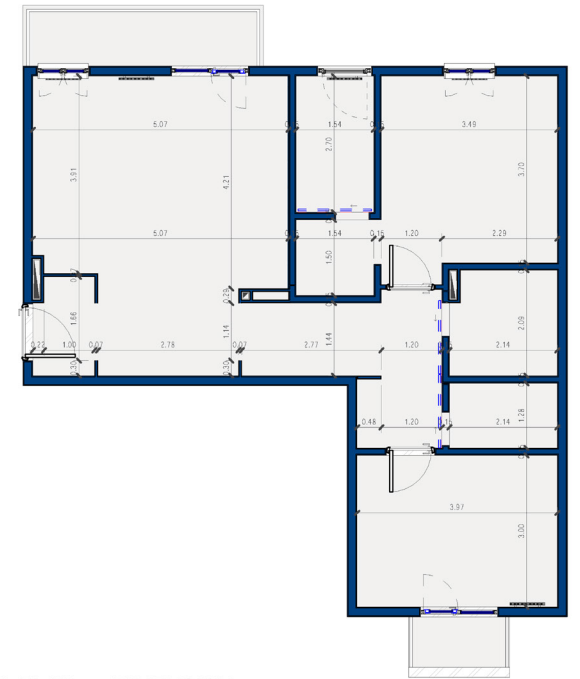
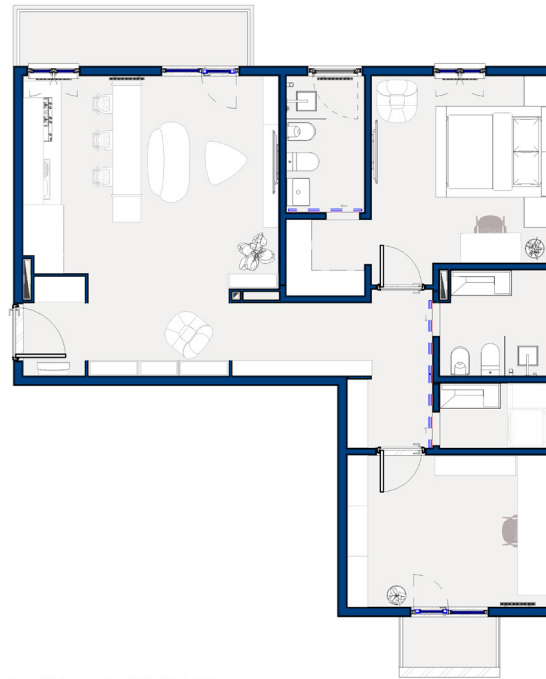
A fully equipped linear kitchen connected to the living space.

A laundry space designed according to the client's requirements.

The living and dining areas are dissolved into one another through the use of a movable table that functions both as a dining table and as a kitchen island.

The larger room facing the courtyard was converted into the master bedroom, featuring an independent bathroom and a walk-in closet.

A dynamic and creative workspace with the option of adding a foldable (operable/closable) bed.



1 FLOOR PLAN - SPACE TAG

ARC 01

1 : 75

2 FLOOR PLAN - FURNITURE

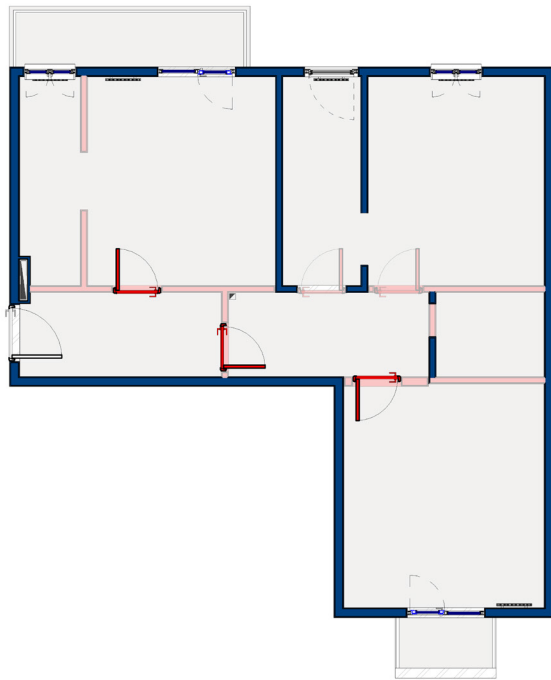
ARC 01

1 : 75

3 FLOOR PLAN - DIMENSION

ARC 01

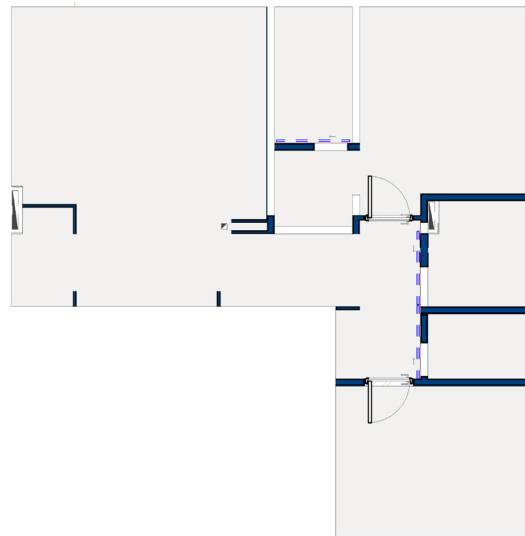
1 : 75



4 FLOOR PLAN - DEMOLITION

ARC 01

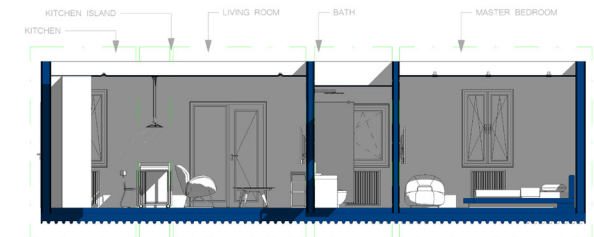
1 : 75



5 FLOOR PLAN - CONSTRUCTION

ARC 01

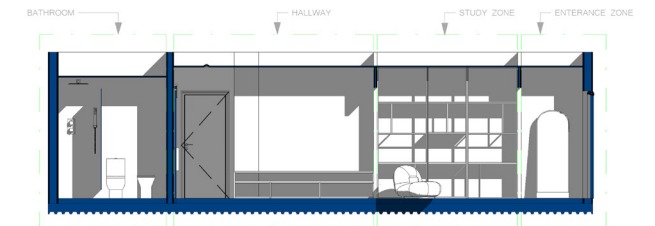
1 : 75



6 SECTION A- A

ARC 01

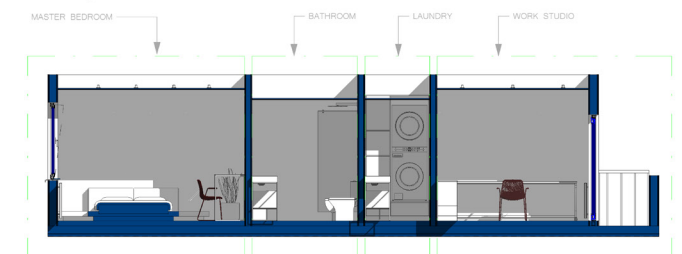
1 : 75



9 SECTION B-B

ARC 01

1 : 75



10 SECTION C-C

ARC 01

1 : 75

GOPILLAR

BOLOGNA



**GOPILLAR**

**BOLOGNA**



**GOPILLAR**

**BOLOGNA**





**GOPILLAR**

**BOLOGNA**



**GOPILLAR**

**BOLOGNA**





GOPILLAR

BOLOGNA



GOPILLAR

BOLOGNA





GOPILLAR

BOLOGNA

