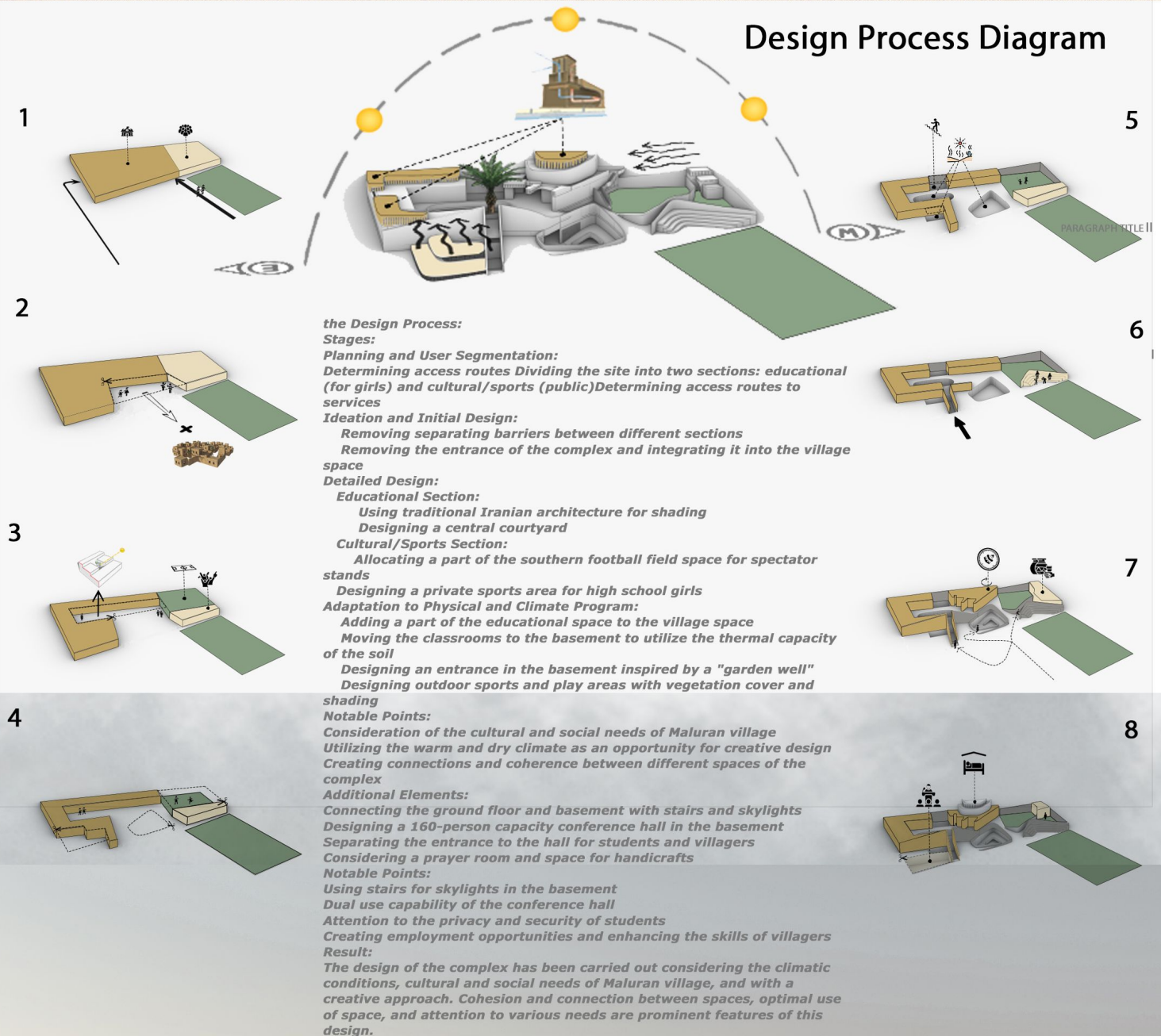


# MALURAN GIRLS HIGH SCHOOL



## Design Process Diagram



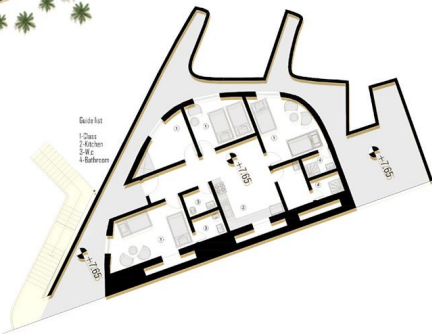




# MALURAN GIRLS HIGH SCHOOL



GROUND FLOOR



FIRST FLOOR

## Theoretical Basis for the Design of the Girls' High School in Maluran

### Introduction

The decision to participate in the design competition for the Girls' High School in Maluran was made with the aim of improving the quality of life for the girls in this village. In this regard, extensive studies were conducted on the culture, economy, climate, social issues, and mindset of the people of Maluran village.

### Key Questions

How can we address the social gap between the people of Maluran and other communities?

How can we challenge gender discrimination in the project?

How can we instill hope, self-confidence, and a sense of progress in the hearts of Maluran girls?

Can we foster participation and empathy among all members of the village through the design of this school?

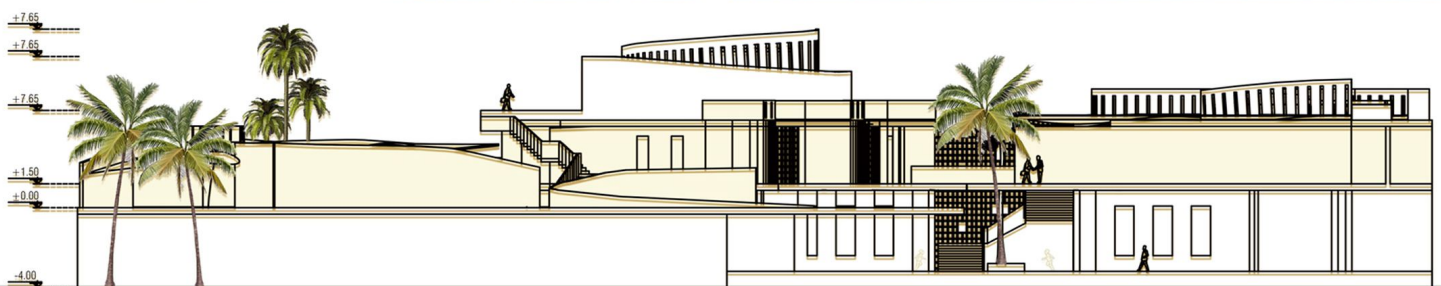
How can we create a functional, sustainable, and aesthetically pleasing space that incorporates the principles of creative school architecture and draws inspiration from Iranian architectural concepts to enhance the educational experience of Maluran girls?

### Design Concept

**Borderless and Shared Space:** The concept of "borderless and shared space" was considered to create an inclusive environment for the people of Maluran, following the organization of physical program spaces based on educational standards.

**Breaking the Boundaries:** Given the limited cultural, sports, and educational facilities in the village, the complex spaces were designed to be accessible to everyone.

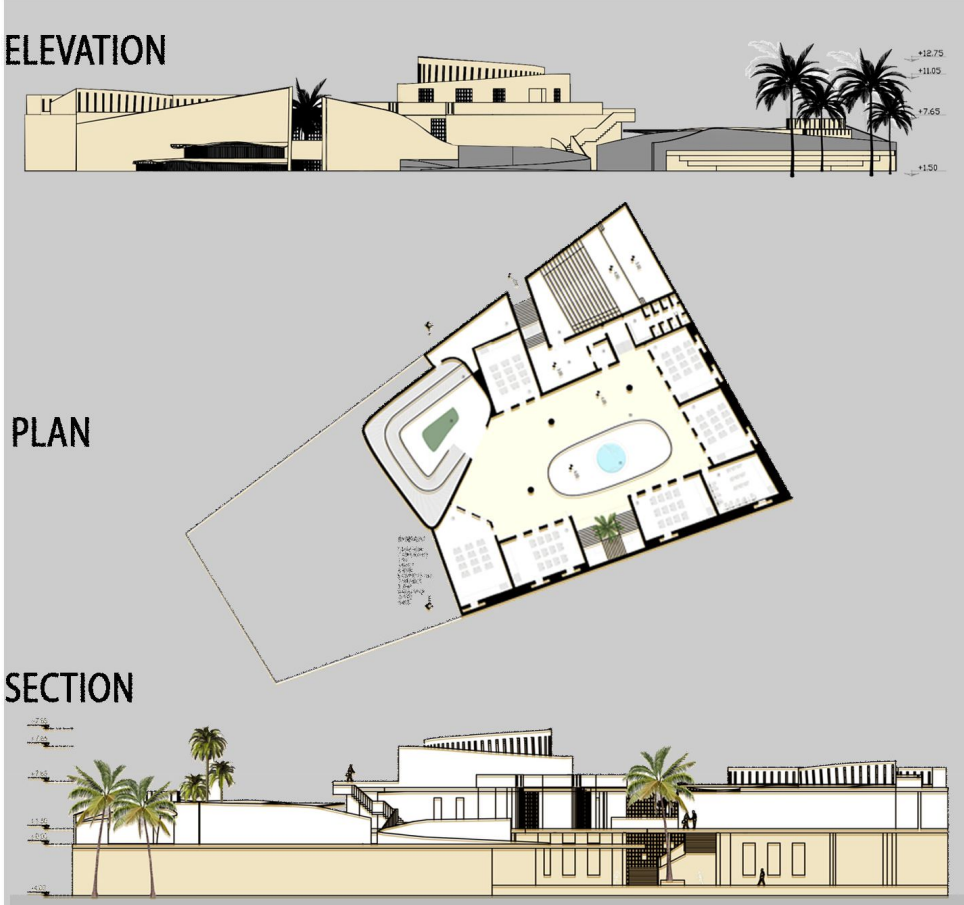
**A Comprehensive Approach:** The complex was designed as a unified entity, reflecting the architectural style of Iranian desert villages, with a focus on interconnectedness.







MALURAN GIRLS HIGHSCOOL



### Addressing Social Gap and Gender Discrimination

**Usage of Two High Walls:** Two high walls with broken and triangular lines were incorporated into the northern facade of the complex and the auditorium entrance, symbolizing protest against the social gap and gender discrimination.

**Water Reservoir Stairs:** Stairs resembling those found in traditional Iranian water reservoirs were designed to go underground.

**Palm Tree:** A single palm tree, symbolizing life, resilience in challenging conditions, blessings, and hope, is placed in the axis of this symbolic gap.

**Sunlight:** The brightness of sunlight at the end of this gap represents hope for the future.

#### Climate-Responsive Design

**Garden Pit and Recreation Yard:** To combat the intense heat of the climate, the concept of a "garden pit and recreation yard" was employed, utilizing the underground level of the complex for organizing the girls' educational spaces.

**Utilizing Soil Heat Capacity and Shading:** By utilizing the heat capacity of the soil and providing maximum shading, the design ensures comfort for the students.

**Windcatchers:** Windcatchers are installed on the roof of the educational section to harness the prevailing north and west winds for natural cooling.

#### Conclusion

The design of the Girls' High School in Maluran was driven by the goal of improving the quality of life for the girls in the village, taking account of the cultural, social, economic, and climatic aspects of the region. It is hoped that this high school will become a symbol of hope, progress, and

