

PORTFOLIO

Nilloofar Moghaddasi

C O N T E N T

PORTFOLIO CONTENT

Apartment

- 01. Irandokht Apartment
- 02. Dezashib Apartment
- 03. Arsa Apartment
- 04. Darma Apartment
- 05. Rose Apartment

WORK AS A TEAM

- 06. Golsar Apartment
- 07. House in the middle
- 08. Velenjak Apartment

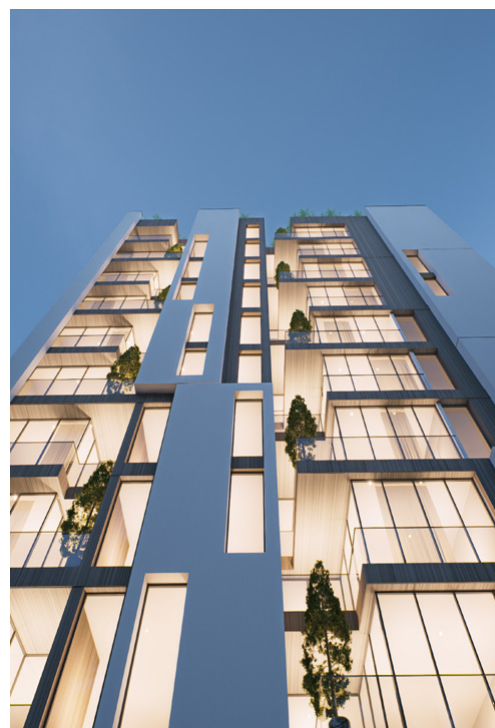
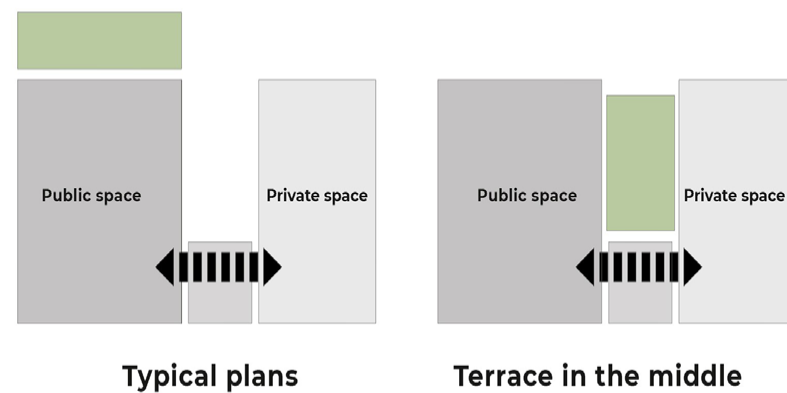
VILLA & HOUSE

- 09. Lucerne House
- 10. Vincent House
- 11. Lavia Villa
- 12. Virga House
- 13. M & T House
- 14. Sou House
- 15. Sarou villa

01

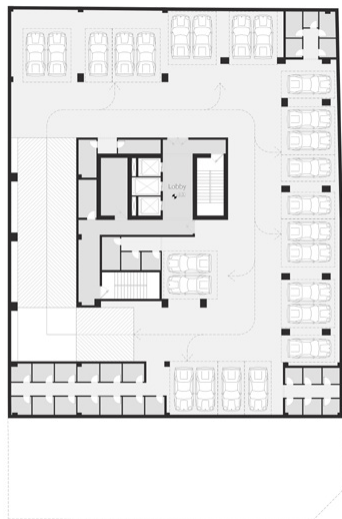
Irاندokht Apartment

Location: Farmanieh ,Tehran , Iran
Year : 2024





Basement 4



Basement 3



Basement 2



Basement 1



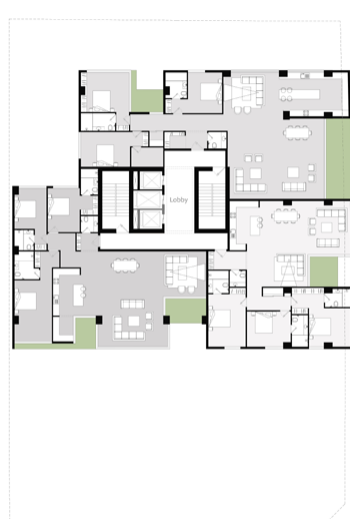
Ground Floor



Ground Floor - mezzanine



Typical plan_Floor 1_Floor 9



Floor 10

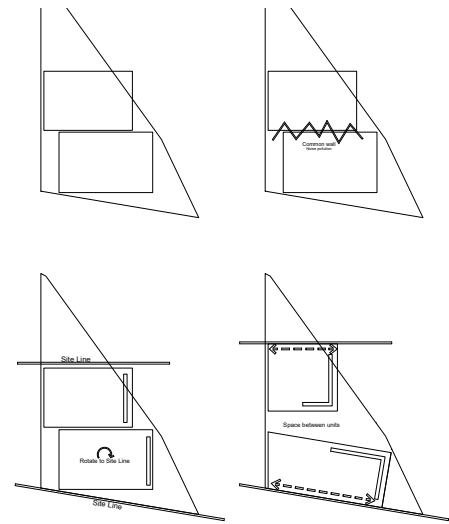
Interiors and plans

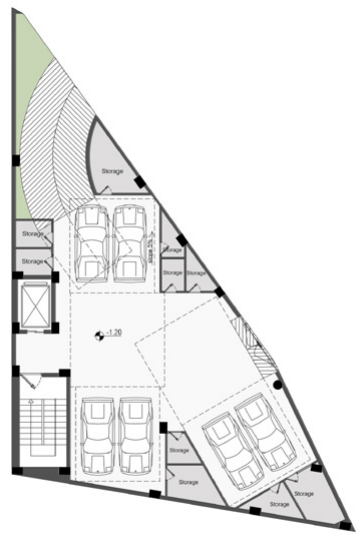
02

Dezashib Apartment

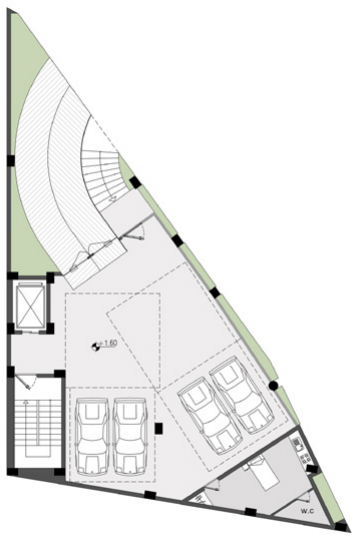
Location: Dezashib ,Tehran , Iran

Year : 2025

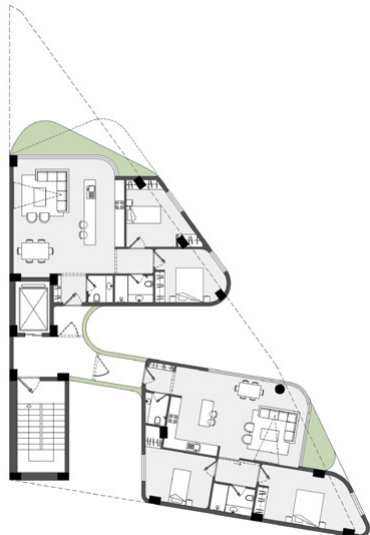




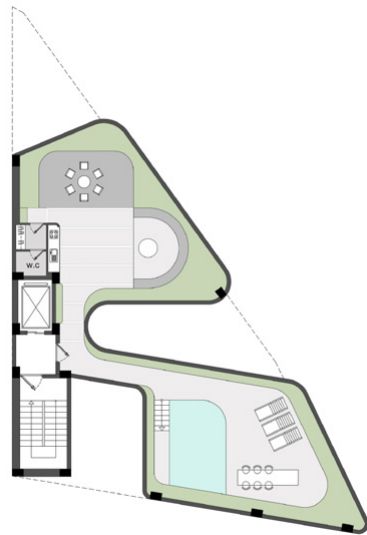
Basement 1



Ground floor



Floor Plan



Roof



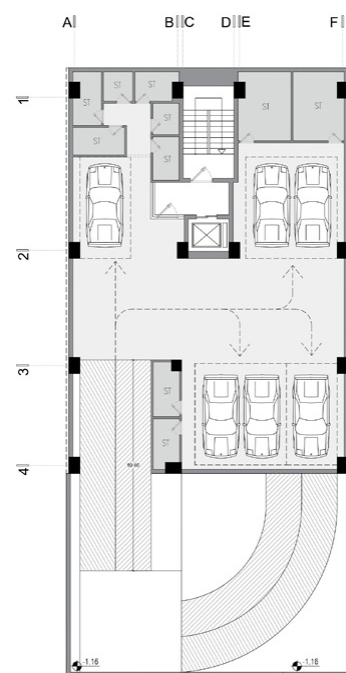
Roof Garden

03

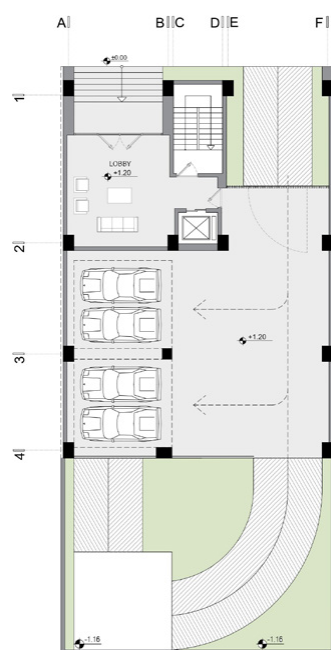
Arsa Apartment

Location: Motahari ,Tehran , Iran

Year : 2025



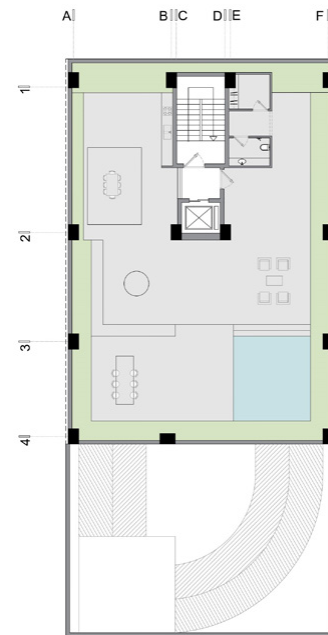
Basement 1



Ground Floor



Typical Plans



Roof Garden



04

Darma Apartment

Location: Motahari ,Tehran , Iran

Year : 2025



05

Rose Apartment

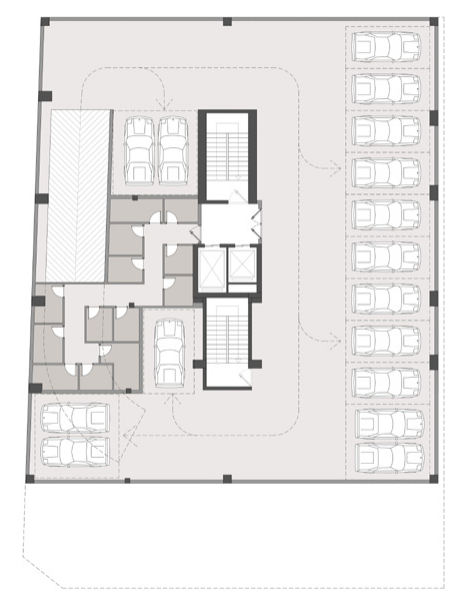
Location: Farmanieh ,Tehran , Iran
Year : 2024



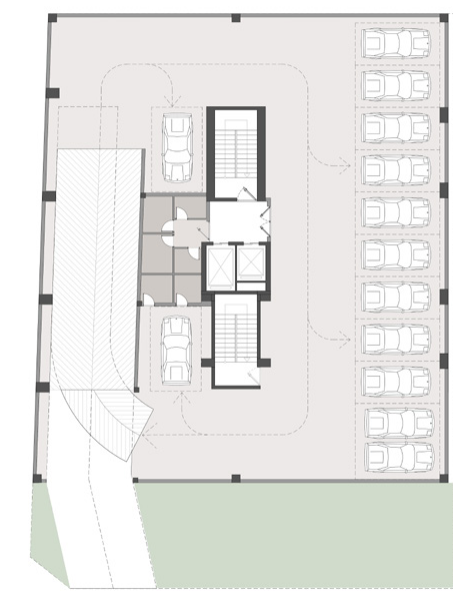
Ground Floor



Floor plan



basement 3



basement 2



basement 1

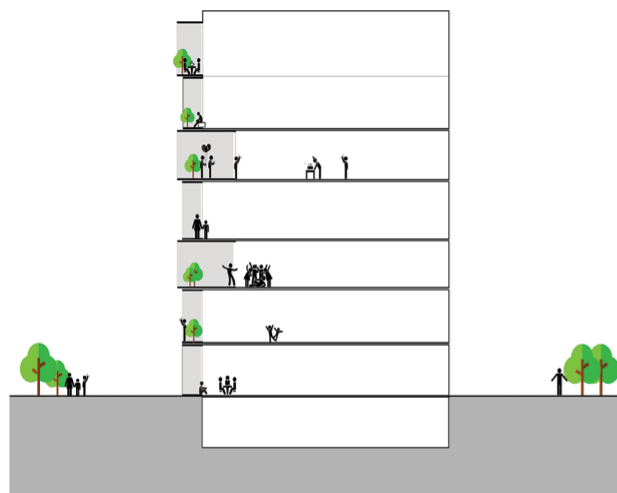
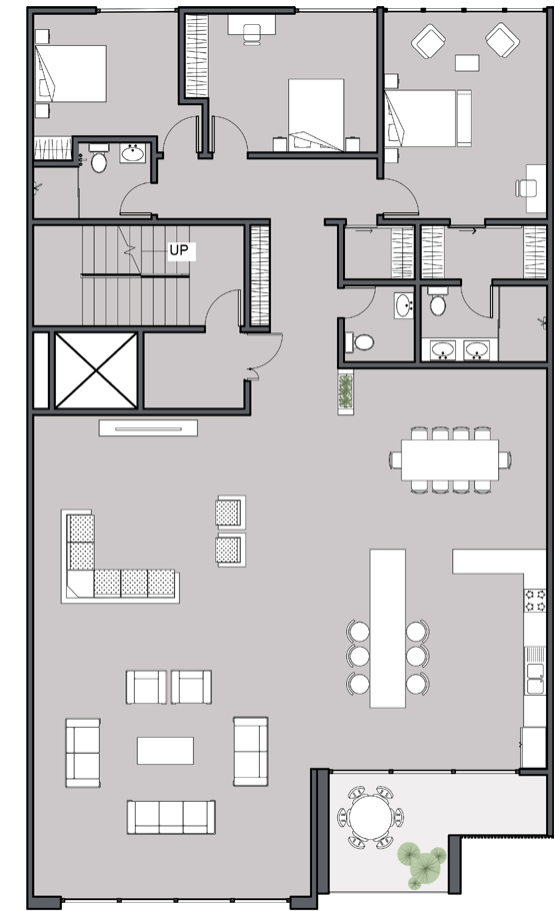
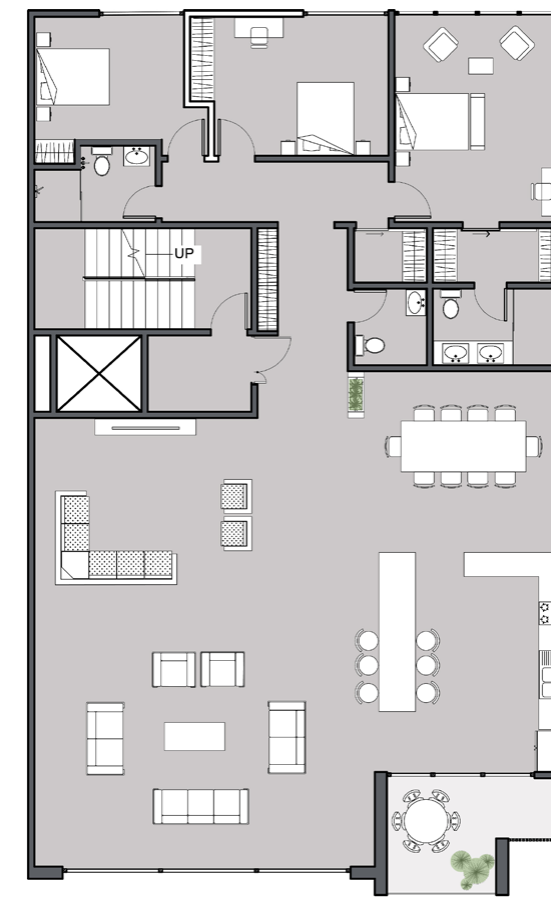
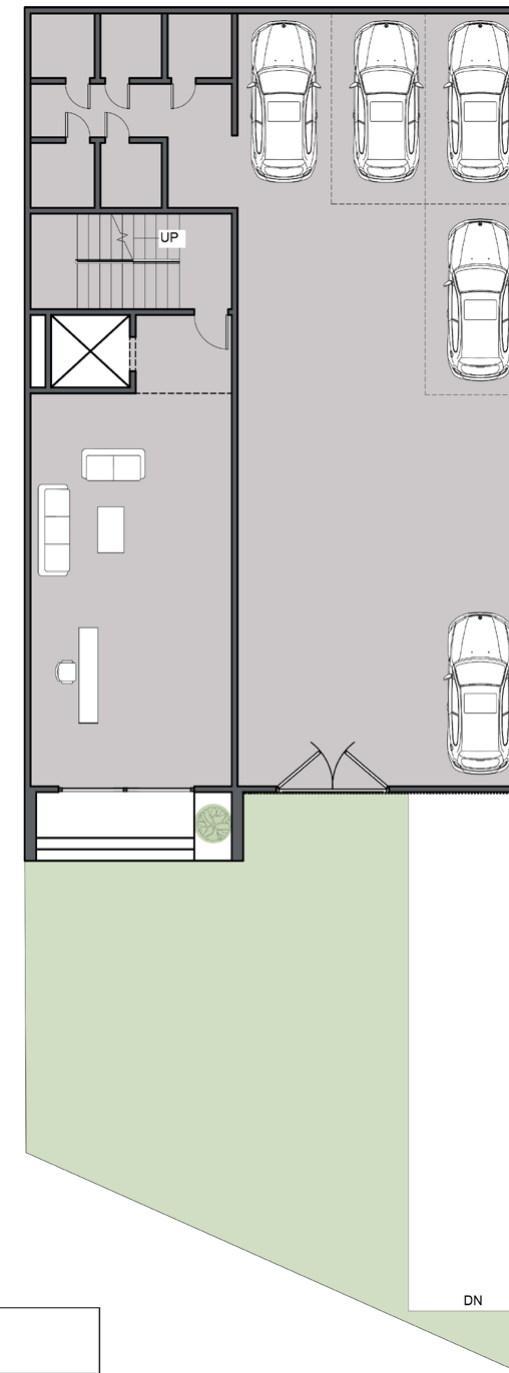
06

WORK as a team
Office : Keivani Architects

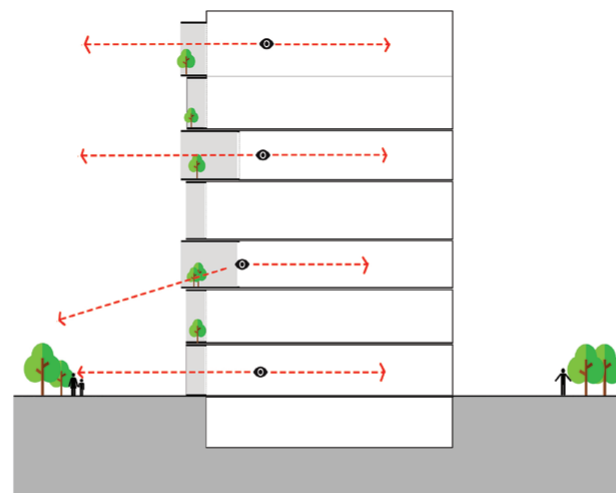
Golsar Apartment

Location: Rasht, Iran
Year : 2020

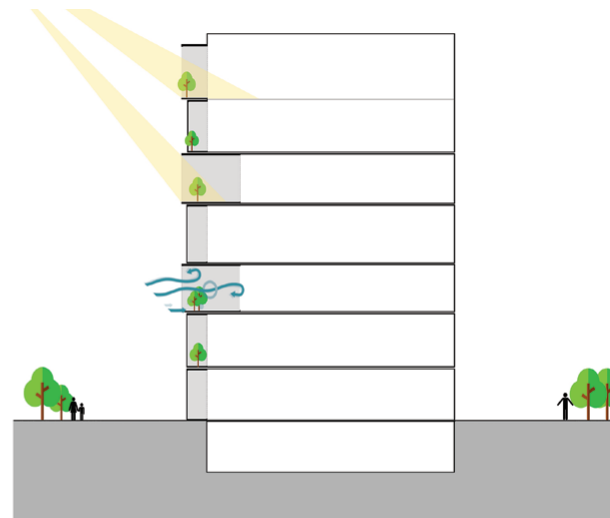
Role: Schematic Design
& Design Development



Interaction between Interior spaces and terraces as a quality space



Creating special view by terraces



Importing the sunlight to the space and using greeneries on terraces to increase the space quality and air quality

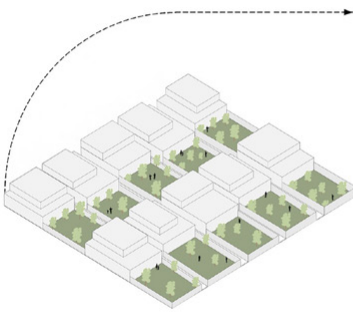
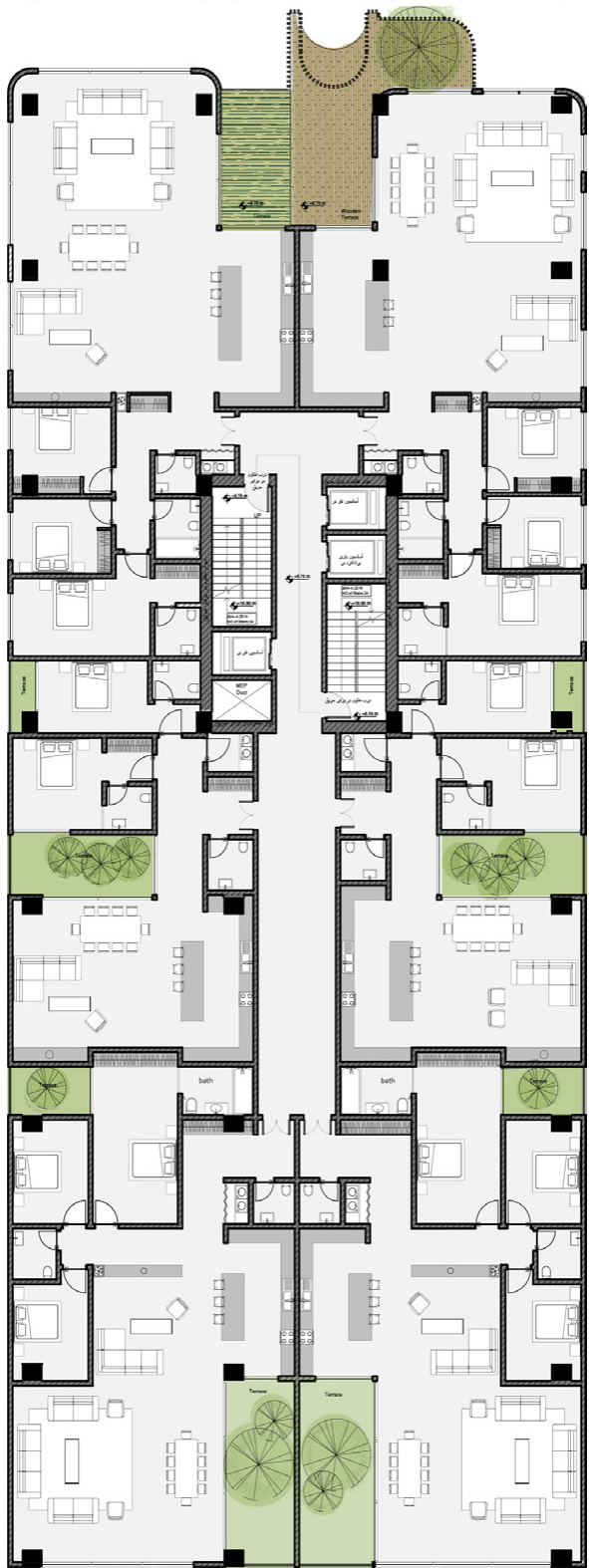
07

WORK as a team
Office : Keivani Architects

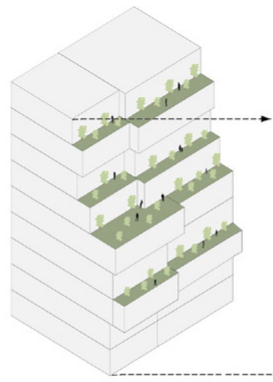
House in the Middle

Location: Karaj, Iran
Year : 2022

Role: Schematic Design
& Design Development



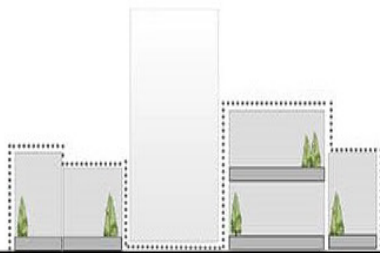
TYPICAL HOUSES YARD IN MEHRSHAHR



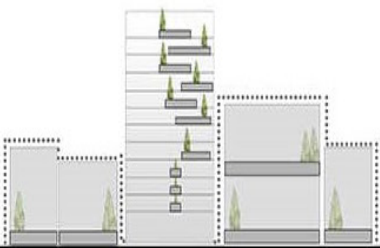
VERTICAL YARDS



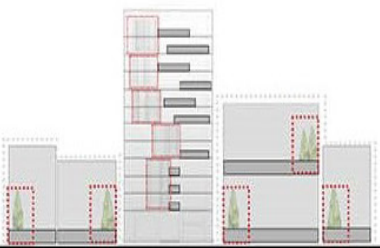
VERTICAL KUSHK



Old neighbor building Terraces.



Adding green space to the design, by the integration of neighbor Wide terraces.



Restricting the range of view in some parts.

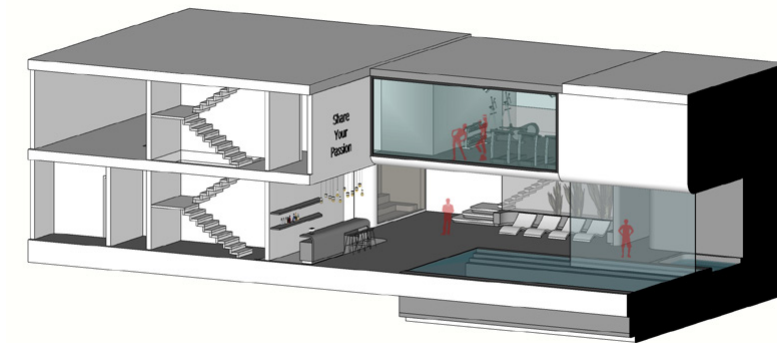
08

WORK as a team
Office : Keivani Architects

Velenjak Apartment

Location: Velenjak, Iran
Year : 2022

Role: Schematic Design
& Design Development



09

Lucerne House

Location: Lucerne BLVD, Los angeles , US
Year : 2025



10

Vincent House

Location: Vincent Ave, Los angeles, US
Year : 2025



11

Villa Lavia

Location: Sari, Mazandaran
Year : 2023



12

Virga House

Location: Sari, Mazandaran

Year : 2023



13

M & T House

Location: Sari, Mazandaran
Year : 2022



14

Sou House

Location: Tehran, Iran
Year : 2024



15

Sarou Villa

Concept Design

Location: Mosha, Iran

Year : 2022

