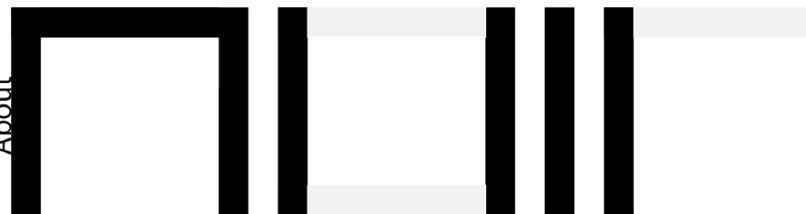


חורח

About



NOIR OFFICE
Founded in 2004

Unit 2 ,NO. 1 Zanbagh end
Bagh-e-sardar st H.Sohani st Sohanak Tehran

+21 2245 3011

www.noiroffice.com
noiroffice@yahoo.com



@Mohamadrezamarashi
@noiroffice

Established in 2004, Noir Office is an innovative and dynamic architecture and design studio that prides itself on crafting extraordinary spaces that leave a lasting impression. With a passion for creativity and an unwavering commitment to excellence, we have been transforming the way people experience architecture and design for over a decade. At Noir Office, we believe that architecture and design have the power to shape lives. We understand that every space has a unique purpose and tells a story of its own. Our philosophy revolves around seamlessly blending functionality, aesthetics, and the essence of the client's vision into a harmonious masterpiece. Whether it's a modern commercial building, a cozy residential home, or an awe-inspiring interior, we approach each project as a blank canvas with endless possibilities. With years of experience under our belt, our team of highly skilled architects and designers possesses the expertise to take on diverse and challenging projects. From conceptualization to execution, we meticulously plan and execute each step, ensuring that every detail is thoughtfully considered. Our portfolio showcases a wide array of successful projects, and it's the satisfaction of our clients that motivates

us to continually raise the bar. Creativity lies at the core of everything we do. We are not afraid to push boundaries, challenge conventions, and explore new realms in architecture and design. Our studio fosters a culture of innovation and artistic expression, allowing us to infuse each project with a unique touch that reflects the individuality of our clients. As stewards of the environment, we take sustainability seriously. Incorporating eco-friendly practices and materials into our designs is not just a responsibility but a commitment we make towards a greener and more sustainable future. We believe that architecture should embrace nature, minimize environmental impact, and enhance the well-being of the occupants. Whether you are an individual dreaming of your perfect home, a business looking to redefine your workspace, or an organization seeking visionary designs, Noir Office welcomes you to embark on an architectural journey with us. Together, we will bring your aspirations to life, leaving a legacy of remarkable spaces that inspire and endure.



V illa 12	1
K atouzian House	2
A ras House	3
B alout House	4
O N House	5
S ea House	6
R oyan	7
H asht Behesht	8
S aman House	9
G hafari	10
P ark House	11
N ashtaroud	12
N amakabroud	13
L avasan House 02	14
K ordan villa	15
H omand House	16
V illa 08	17
D amavand Villa	18
V illa Ahvaz	19
D amavand	20
S ea house 02	21
G olchin villa	22

Villa 12

2 ND AWARD IN IRAN MEMAR AWARD 2018

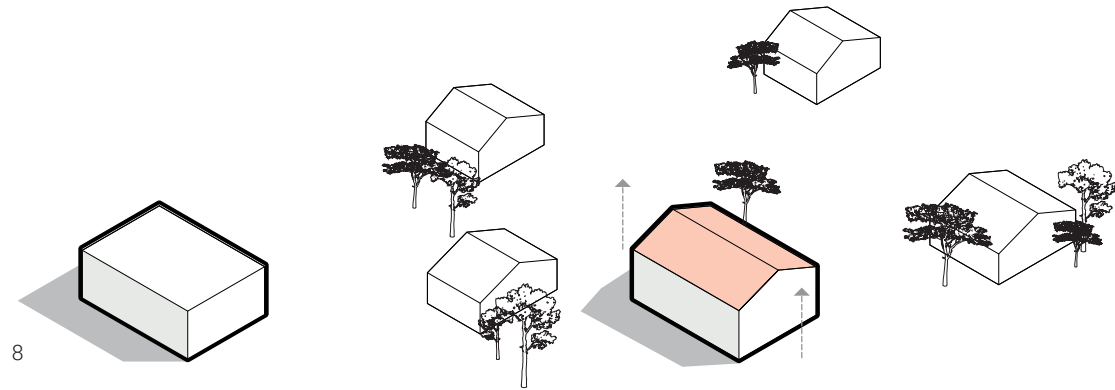
NOOR, MAZANDARAN
RESIDENTIAL
553 M²
2018

The VILLA No.12 is one of four villas that client had ordered our design group team (Noir studio)In this township and none of them were in their vicinity.At the first level of designing procedure, we had to find a common concept for these villas.preserving the integrity and following the leading ideas in these villas with different spaces and behaviors was our principles.

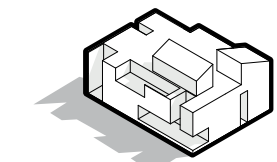


Because of the same dimensional and areas of the site, we chose a cube form with equal dimensions and same areas for all units, considering climate affection that change the flat roof of cube to the sloped one.

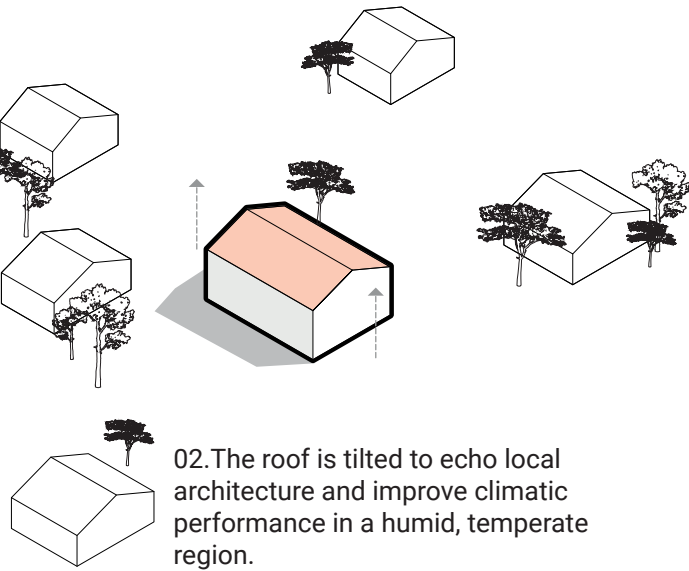
8



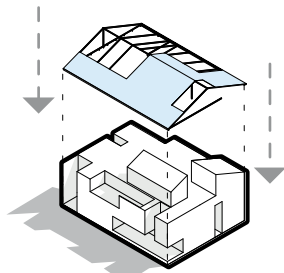
01.Initial volume



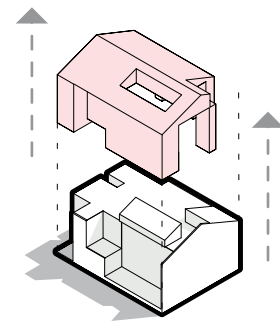
04.Semi-open spaces extend into the building, shaping finalized internal masses and ensuring continuity between inside and outside.



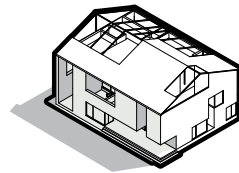
02.The roof is tilted to echo local architecture and improve climatic performance in a humid, temperate region.



05.A sloped roof envelope with skylights enhances natural light and echoes local architectural identity



03.Outer layers are removed to generate semi-open transitional spaces, inspired by traditional circulation corridors found in regional architecture.



06.Final form

9





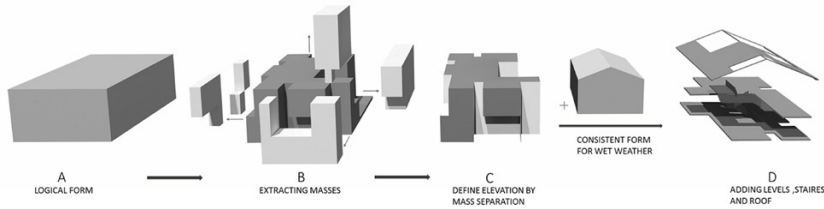
Next level was designing villa No.12, according to mentioned items in previous paragraphs, we started creation negative spaces in different alternatives. Many basic factors lead us to extract the negativespaces and reach to the final form after many revisions. These factors are, locating the main and secondary terraces, the view and perspective toward surrounding environment and vicinities and the way of lay outing required spaces.

We followed some target in this project. Making a contrast between negative space faces and other surfaces of façade by using brick material was one of this. The other one was directing view from inside through L-type windows toward green walls that all of these items made more connection between these units with its surroundings.





In addition to adhering the function of stairs and terraces with its continuity and separation, they appeared in another different roll, and this shows us importance of these elements in residential spaces.





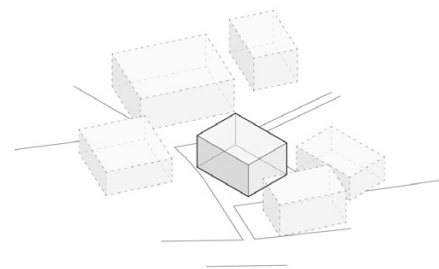


Katouzian House

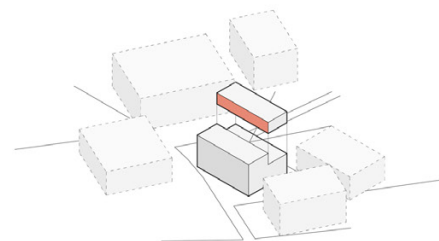
FINALIST IN IRAN MEMAR AWARD 2020

LAVASAN, TEHRAN
RESIDENTIAL
695 M²
2020

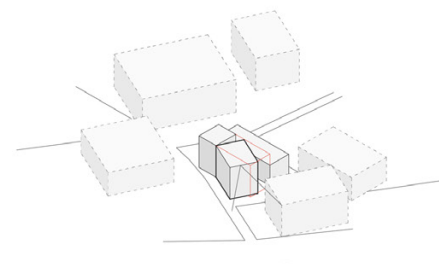
In designing process of Katoozian's house, we faced to two challenges.
First location and geometrical situation of the site. Unlike ordinary sites, this plot is surrounded by neighbors on four sides. And it's only access to the main passage is by two alley with 3 meters width in the north and south of it.



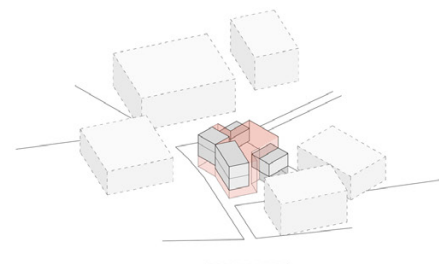
Simple cube



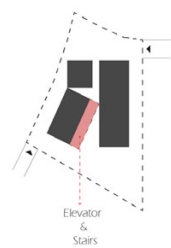
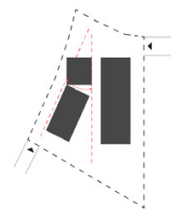
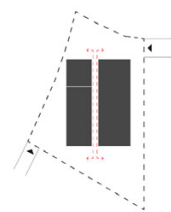
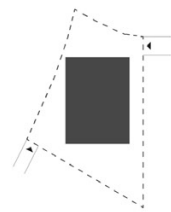
SUBTRACTED cube to have mountain view



SEPARATED private spaces with negetive space

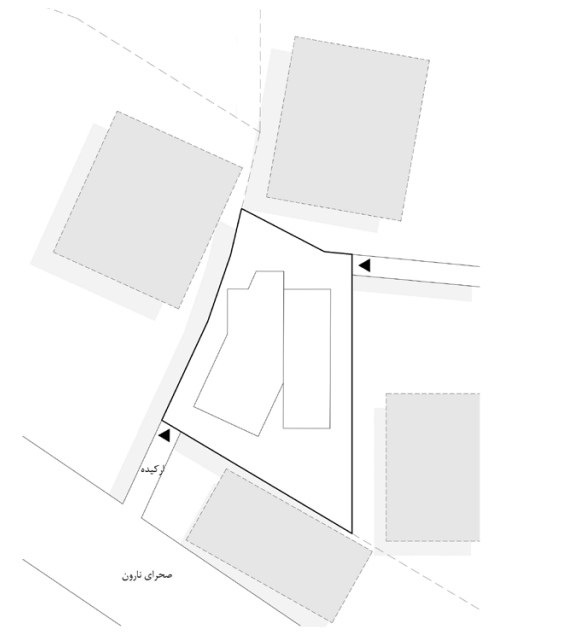


ROTATION to avoid overlooking neighbors



Elevator
&
Stairs





SITE PLAN

In the design process the issue of quality of spaces in terms of direction, lighting, vision and perspective was important that due to the enclosure between the surrounding buildings could be the basis for the formation of the project's design and idea.

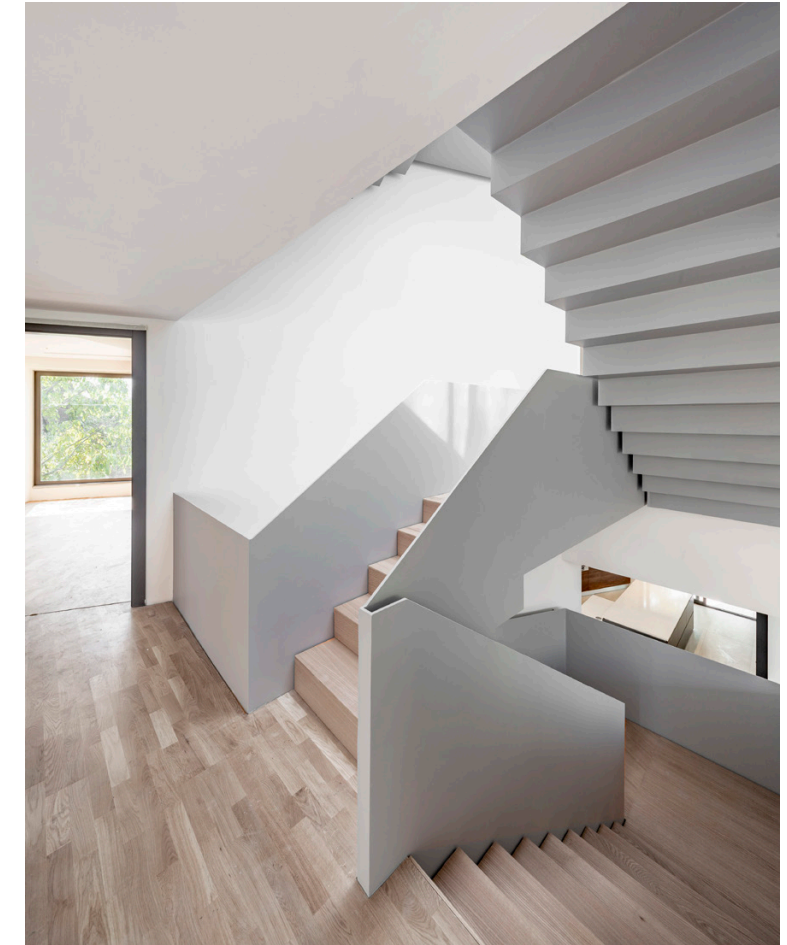




Irregular geometry of the site and heterogeneous angles of neighbors towards site were among the issues ahead in the designing of this building.

Removing part of the northern mass of the project on the top floor and creating a yard and placing a pool in that space as a second yard made it possible for us, in addition to increasing the area of the yard, transfer the view which ground floor yard was forbidden to the third floor and by placing the party space, level with this yard, transport social life from the ground floor to the top floor so in addition to having a view of the northern mountains, it has the least view of the surrounding buildings.

For example the placement of the guest bathroom and main hall, as well as the main courtyard of the project in the southern part, and the placement of the kitchen and the private living room near the northern entrance based on the access of the site create a better function.

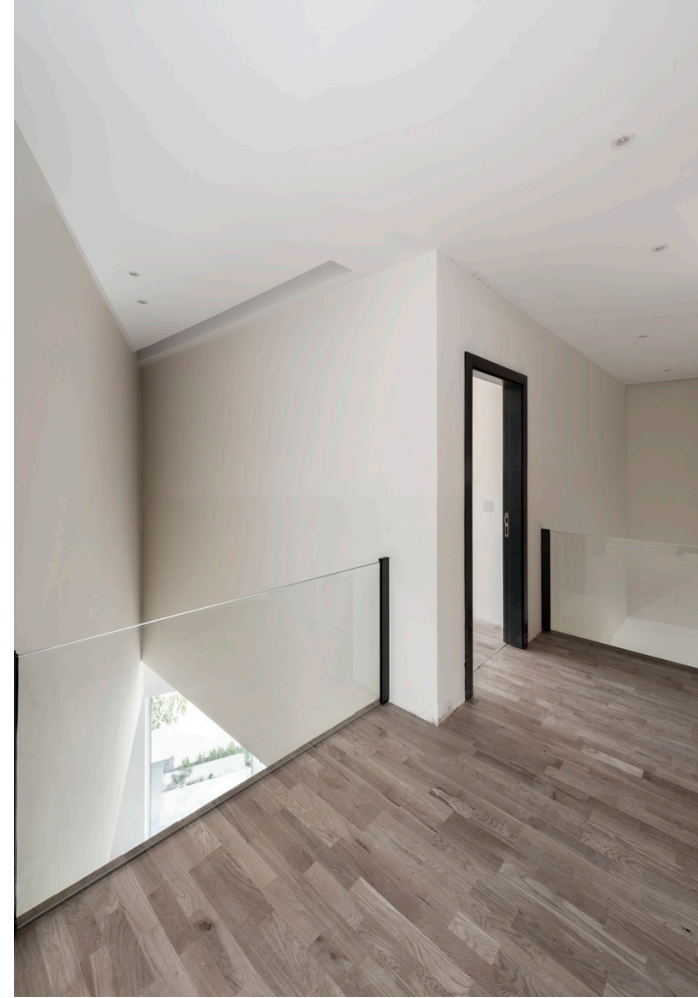


Second in this project the employer had requested spaces such as four master bed rooms, a private hall and living room, a kitchen, as well as a hall in the separated bedrooms area for parties, a watching movie room, a janitor room, laundry room and parking for two cars. Which has a total area about 700 m² with about occupancy of 250m², and this creates a large mass inside the site. Also creation of an outdoor swimming pool and acceptable green space was others requests from the employer.



30

noir



2020

31

By creating an east-west gap in the project mass and placing communication space in this part and using ceiling lighting and routing the southern part and aligning it with the ground, in addition to homogenizing the project with the site lines, we created a better view in this part and improve the quality of the intermediate and communication spaces with better lighting in the existing gap, and finally we design a homogeneous project with the geometry of the site and in interaction with the neighbors and maximum use of the northern and southern view of the project, so that when we are inside the building, various frames of views with better depth of view can be created in each of the spaces.



2020

noir

2020



In fact the design of this project was like sewing clothes in a body with a disproportionate form, which can minimize the defects of the body and use the most of its potential. Placement of skylights, openings, terraces, enclosed spaces with maximum use of skylight and views. This has created a variety of views with different openings. The two accesses on the site allowed us to consider the northern access as a rider access and the southern access as a pedestrian access, which of course it was effective in arranging the project spaces.

A ras House

The two yards are created on two different levels with a communicational staircase element which this time plays not only the role of vertical communication but also the role of movement, exploration and finding the various views and perspectives by the users. The presence of the skylight in the gap between the eastern and western parts better illuminates the space and create a sky view for the residents. furthermore, it also helps to connect the two courtyards which leads to the design an introspective building establishing a mysterious communication with the external environment and landscape.

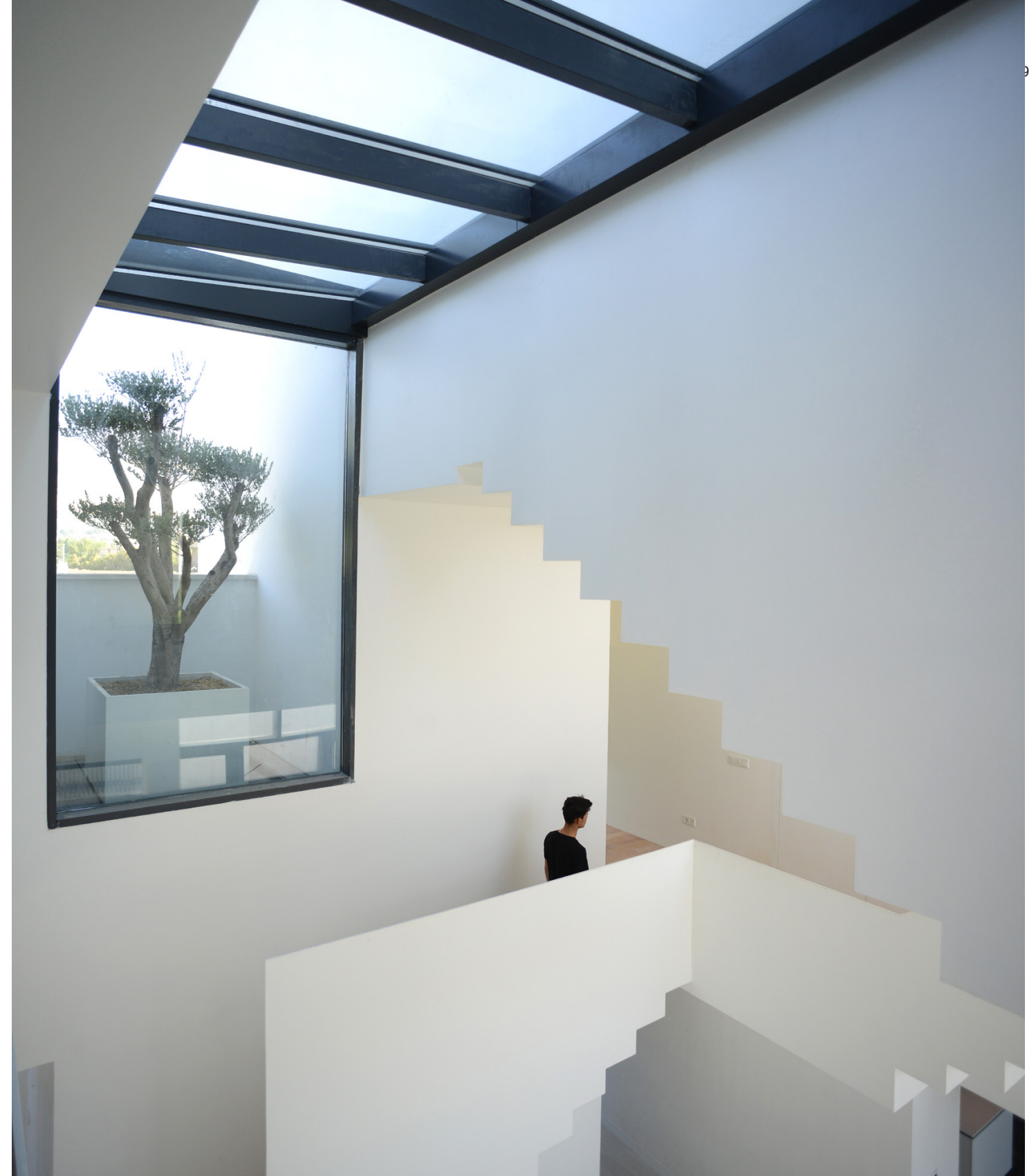


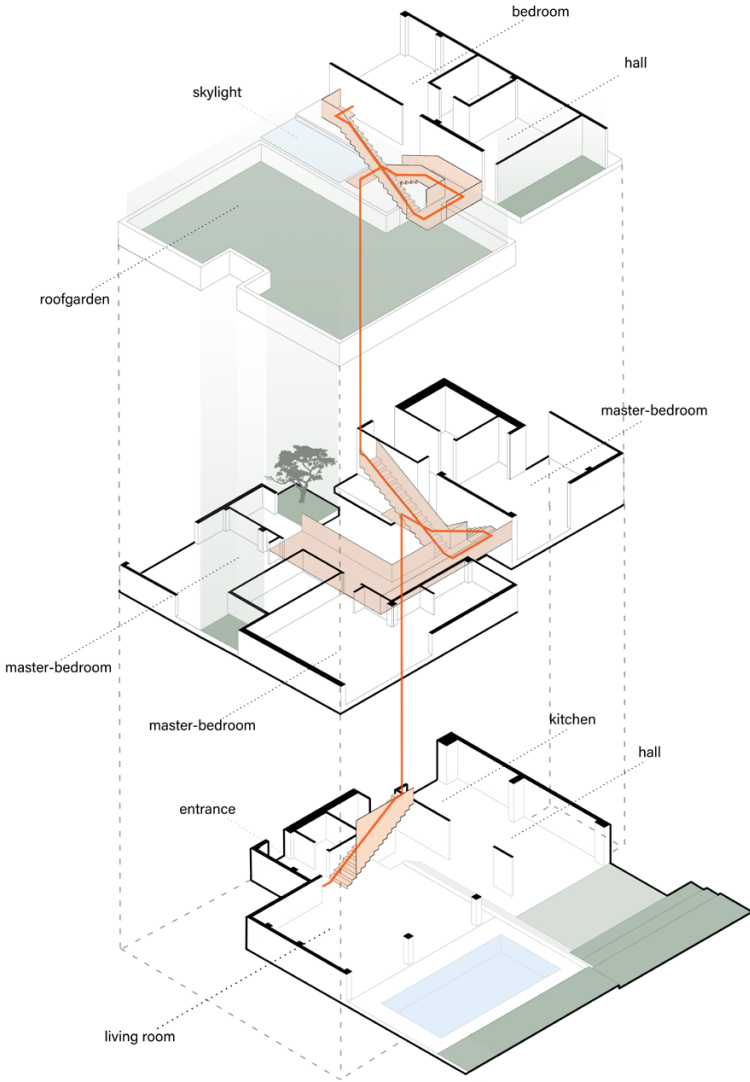
LAVASAN, TEHRAN
RESIDENTIAL
? M²
2019





2019



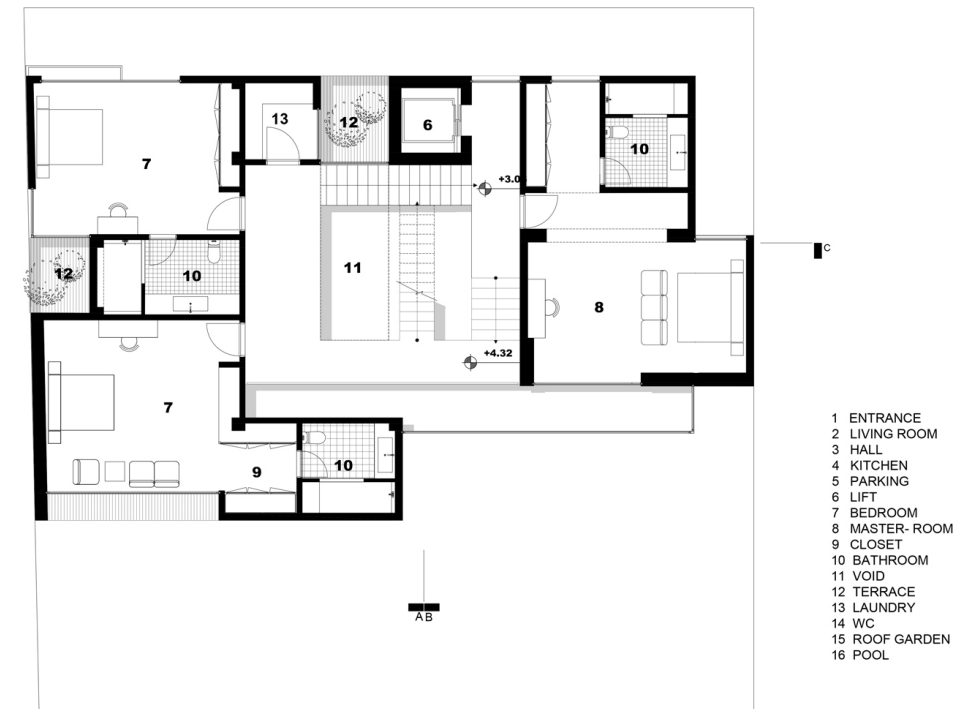




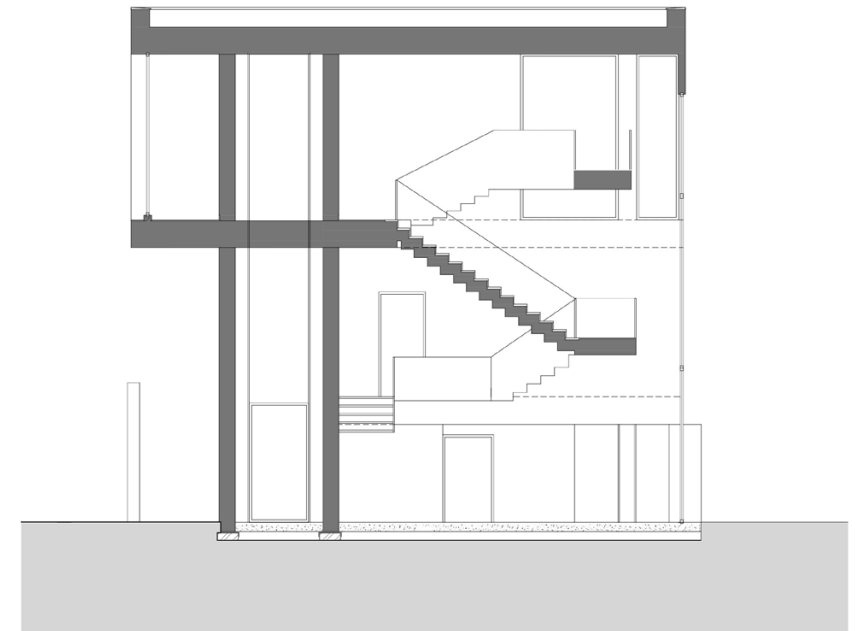
2019

NOIR

2019



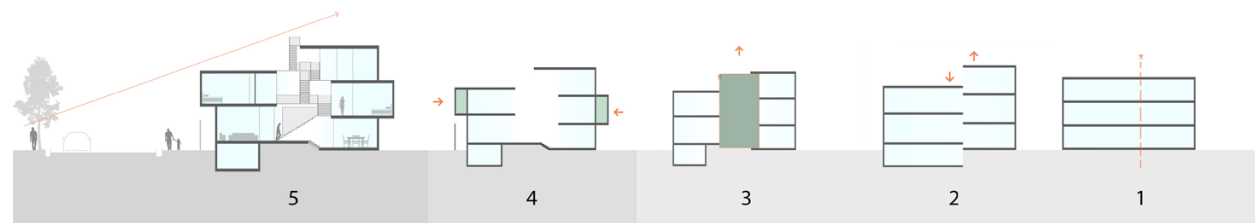
NOIR PLAN







46



-the reduction of the height of the west part adjacent to the main street
-a communicational staircase element which plays not only the role of vertical communication but also the role of movement and exploration

replacing the area made by void around the sides of the mass with consoled shapes

Creating the central void for placing the communicational staircases

Removing the third floor in the west part and moving it to the basement

three-story level height according to the rules and divided mass into east and west parts

noir



47



Balout House

LAVASAN, TEHRAN
RESIDENTIAL
M²
2019

Balout House is a project along the design and construction of Aras House. While about a year has passed since the design and construction of the Aras project, the design of the adjacent land project (in Balout Alley) was referred to us.



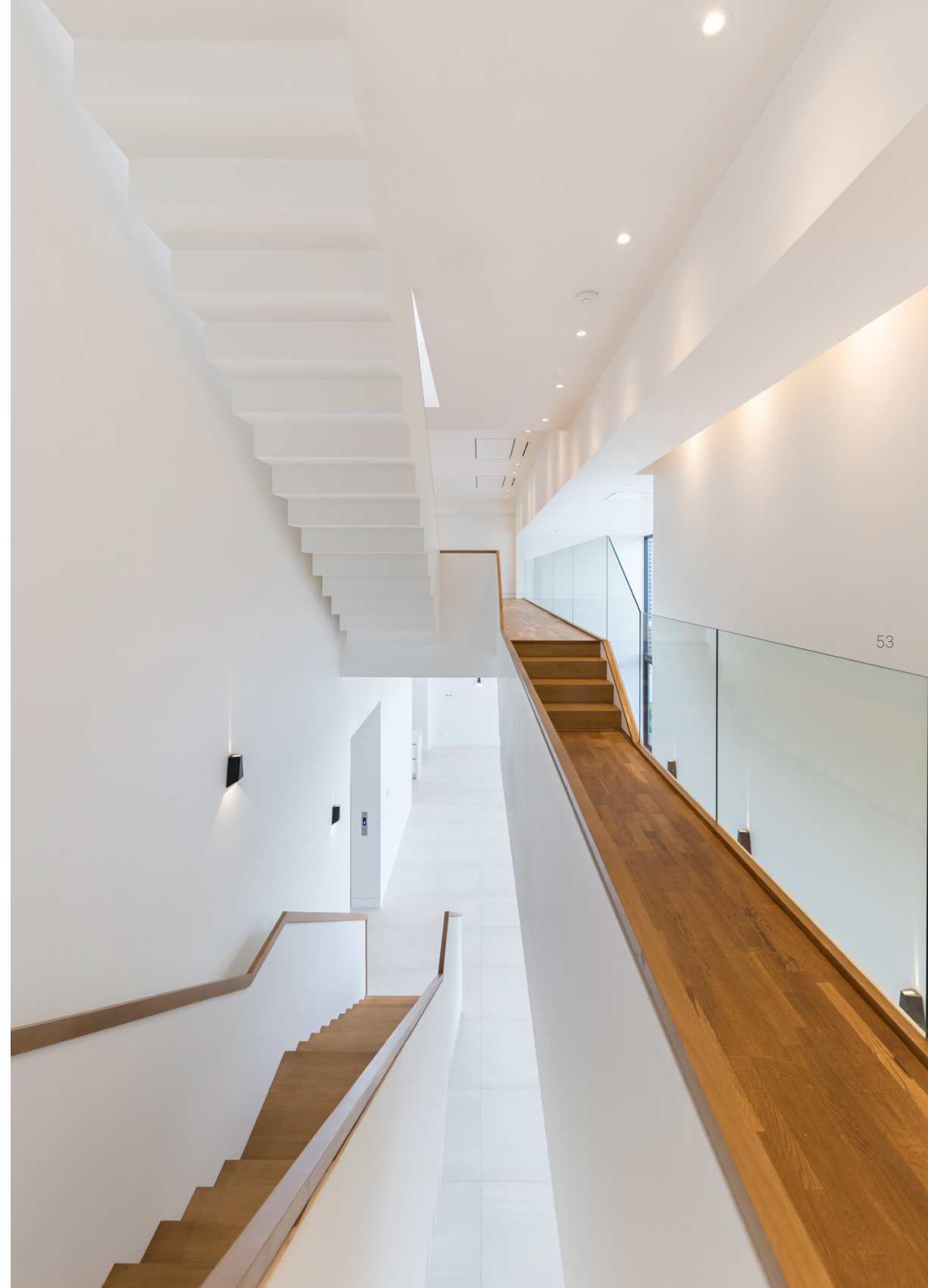
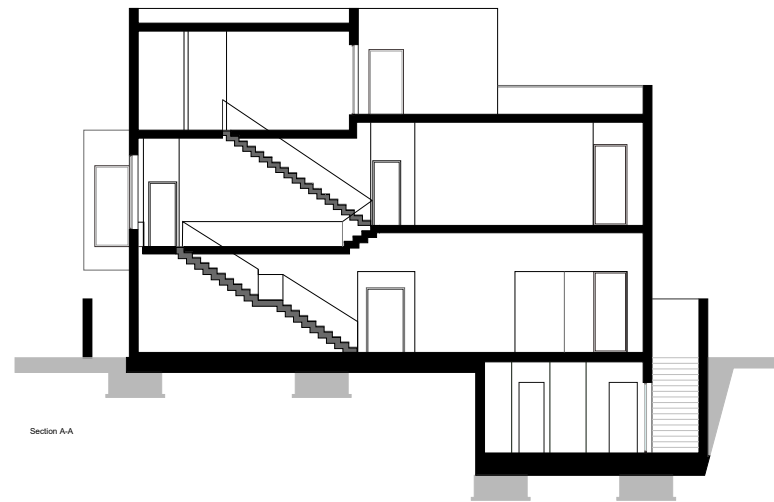


52

2019

noir

Therefore, by negotiating with the Client and explaining the qualities created in the Aras project, we decided to consider the design and construction of this project (which was in progress) as a basis for ideation and design of the Balout project.



53



So that these two houses, in the design and after the execution, can be seen as twin and neighboring houses, and complement each other, and provide a well-proportioned and dynamic texture in the north, west and south walls (alleys and streets).





To this end, as in the Aras project, the design process began with a change and gamification with the original construction of a three-story cubic 17×10 meter (according to the criteria) and the creation of a void and the replacement of the reduced void surface around the volume, With the difference (compared to Aras) that void is created next to the south side of the volume (facing the yard), not only to create a sitting room as an inner terrace above the void and facing the south green yard, but also according to the height consequence of the split levels, a suspended pool with infinitive visibility (merged into the external environment and landscape) will be created on the roof-garden for the more collective use of the outdoor space of the roof-garden.



Here, too, the communication staircase, as a fluid and followable movement path, with the difference of split levels and the separation of access to private and public spaces, creates the desired fit of the project volume and coordination with the neighboring twin building.

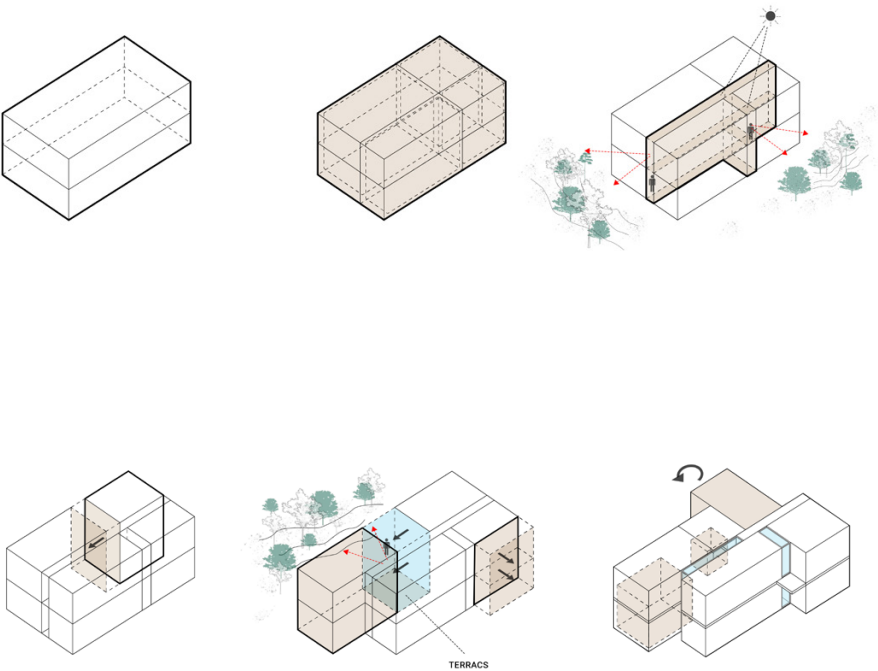




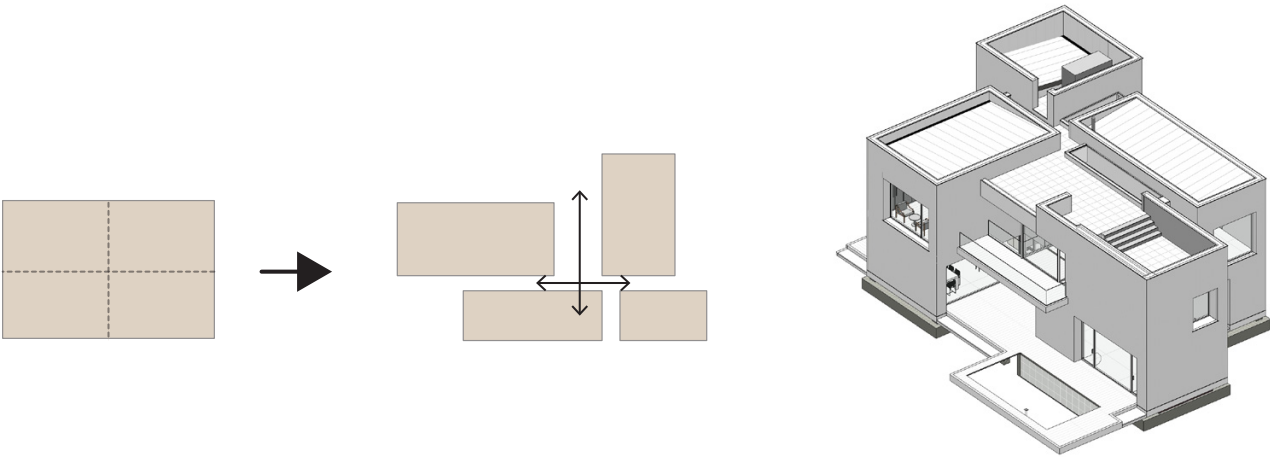
NAMAKABRUD ,MAZANDARAN
RESIDENTIAL
530 M²
2019

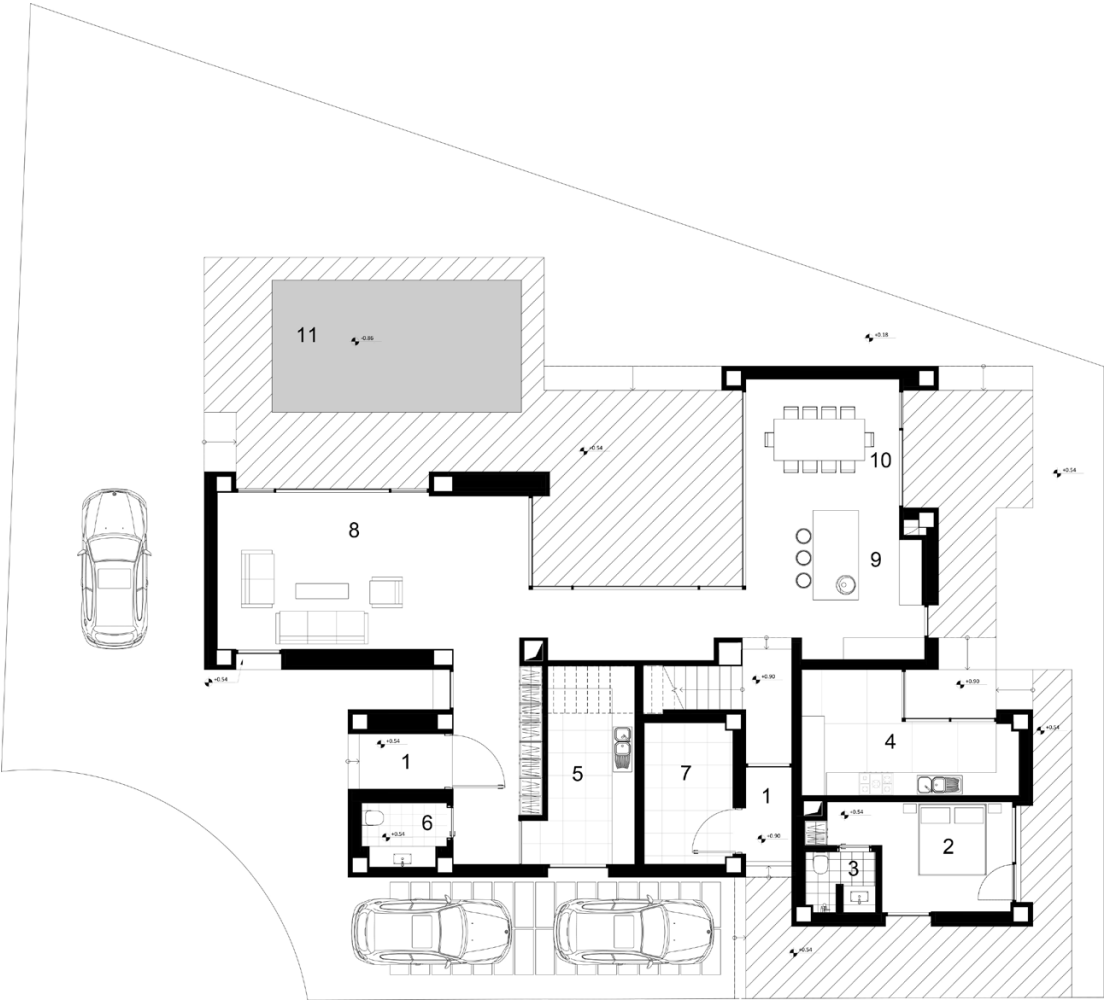
In the design of On House, one of the key elements is the creation of an intermediate space that plays a central role in organizing and dividing the interior spaces. This intermediate space not only helps divide the house into four distinct sections but also serves as a bridge for connection and access between these spaces.



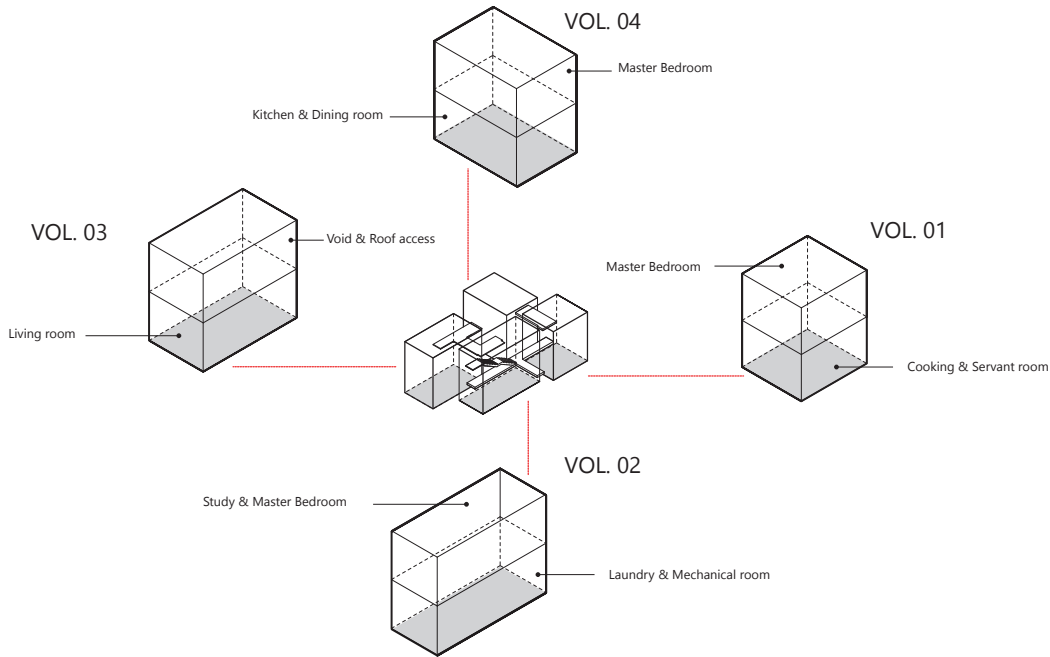


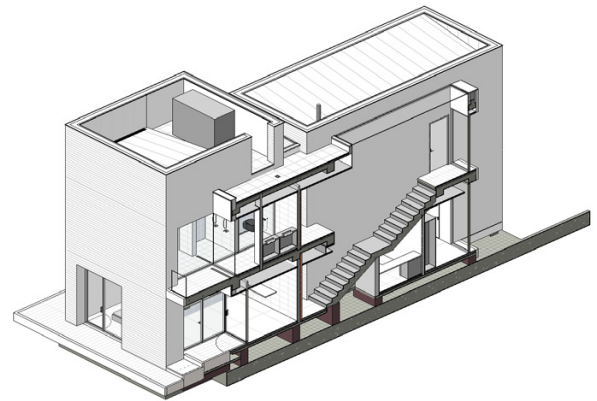
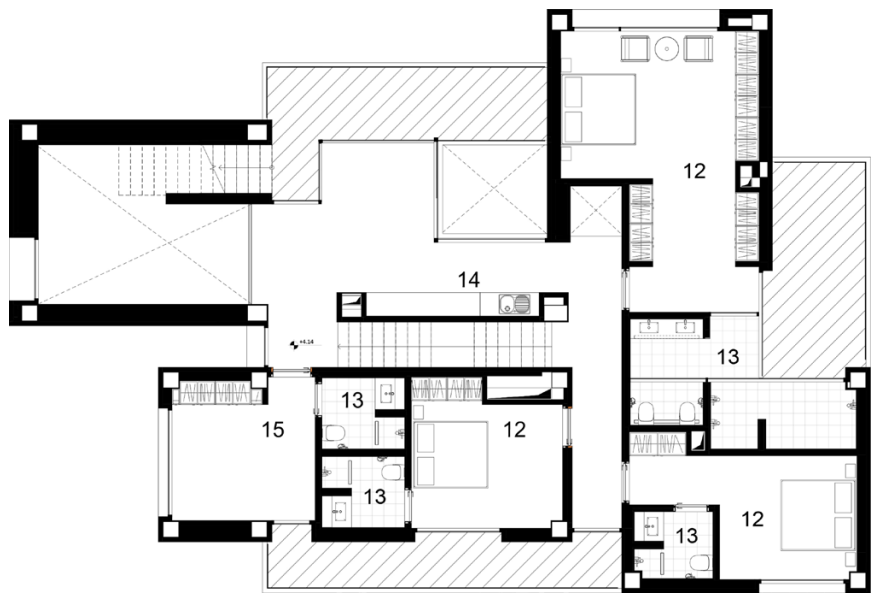
From a landscaping point of view, aiming to enhance it as a cohesive element that acts as a usable garden and scenery for the interior of the house.





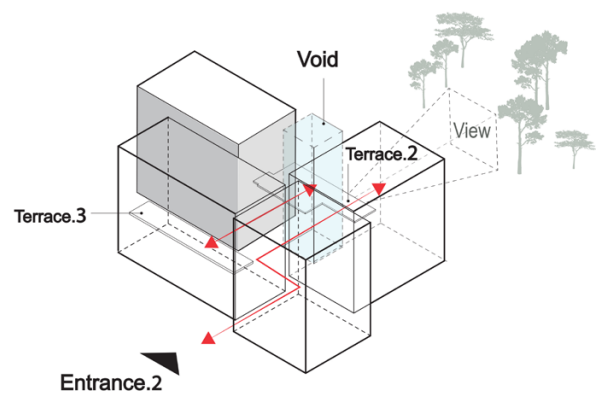
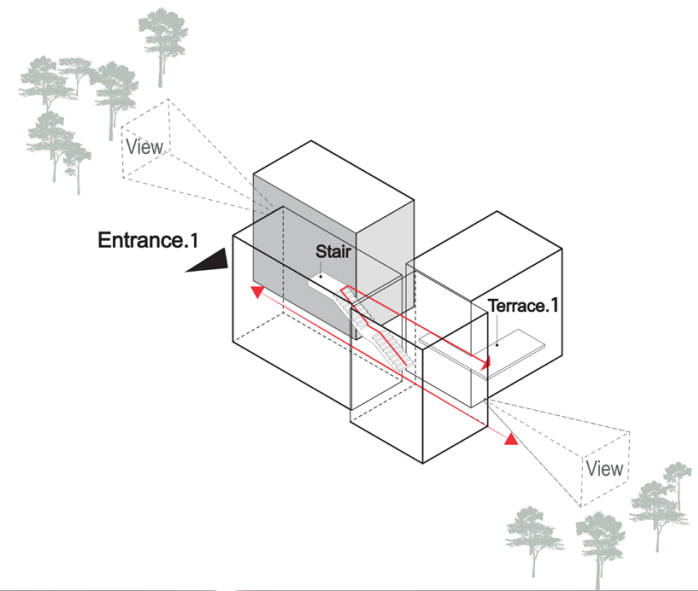
his space also intelligently establishes a visual and spatial connection between the interior and exterior of the building. By opening up toward the surrounding forest, it creates a sense of continuity and harmony with nature, blurring the defined boundaries between inside and outside, offering the residents a fluid spatial experience.







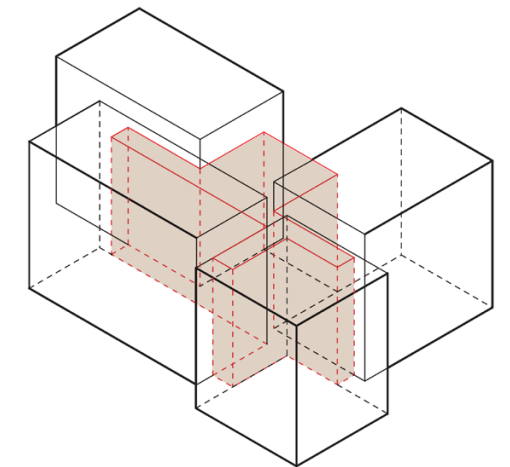
In this context, the use of white brick in the design is not only an aesthetic element but also serves as a visual language that enhances the connection between the interior and exterior of the building. With its color and texture, this material gently extends the intermediate space to the outside, giving the structure depth and character.



This space also intelligently establishes a visual and spatial connection between the interior and exterior of the building. By opening up toward the surrounding forest, it creates a sense of continuity and harmony with nature, blurring the defined boundaries between inside and outside, offering the residents a fluid spatial experience.



The interior is a continuous play with shadows and lights, created with the new glass openings and the use of materials that intentionally want to create a strong sense of contrast. From a landscaping point of view, aiming to enhance it as a cohesive element that acts as a usable garden and scenery for the interior of the house.



Sea House

MAZANDARAN PROVINCE,KHANE DARYA TOWN
RESIDENTIAL
? M²
?



Royan



LOCATION ?
RESIDENTIAL
? M²
?



Hasht Behesht

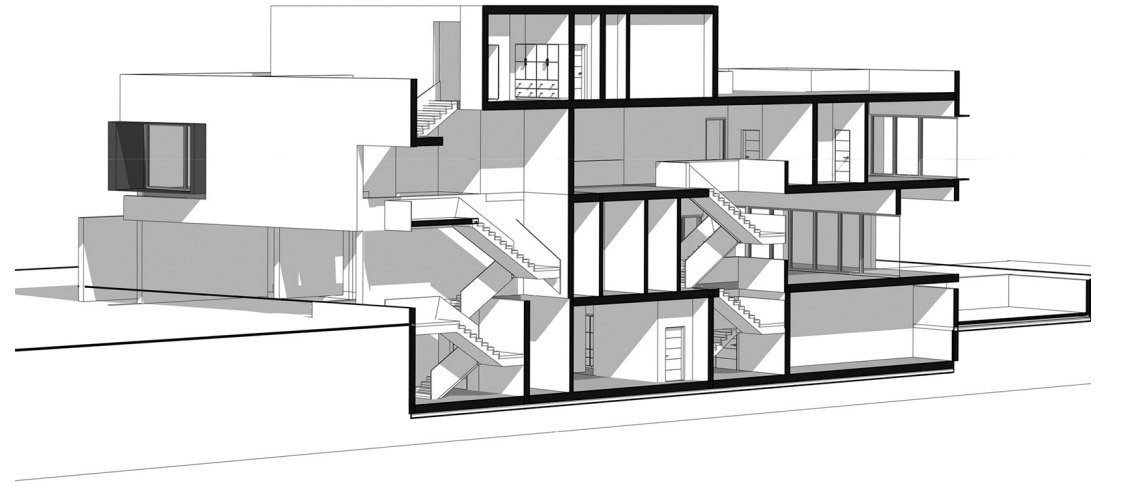
LOCATION ?
RESIDENTIAL
? M²
?



DAMAVAND HOUSE
NOIR OFFICE



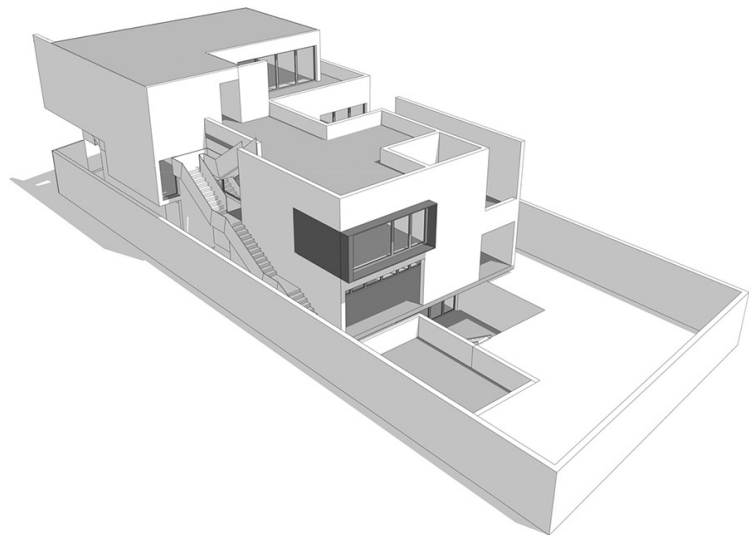
Saman House



LAVASAN, TEHRAN
RESIDENTIAL
650 M²
2017

Design Concepts

1. When confronted with a challenging landscape and a very specific design brief from the client as to how he envisioned this villa to be constructed, our design was strongly guided and influenced by the unusual shape of the land.



?
RESIDENTIAL
? M²
?



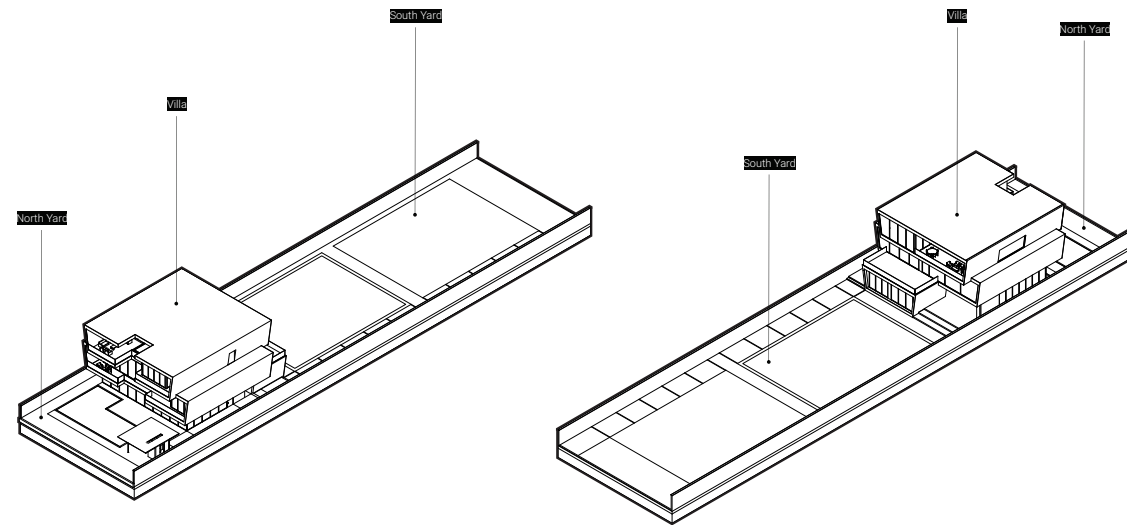
Park House

SHAHRAK GHARB, TEHRAN
RESIDENTIAL
? M²
2025





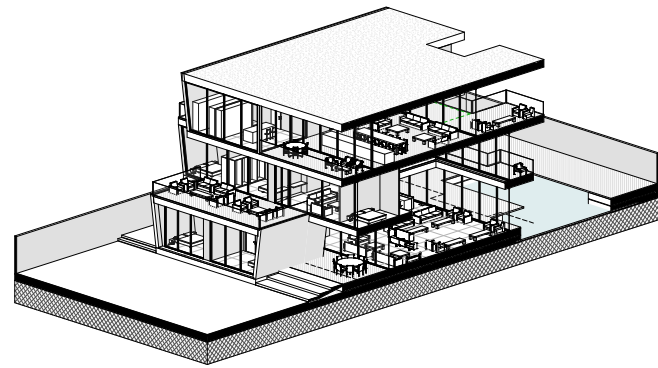
Nashtaroud



NASHTARUD , MAZANDARAN
RESIDENTIAL
? M²
?

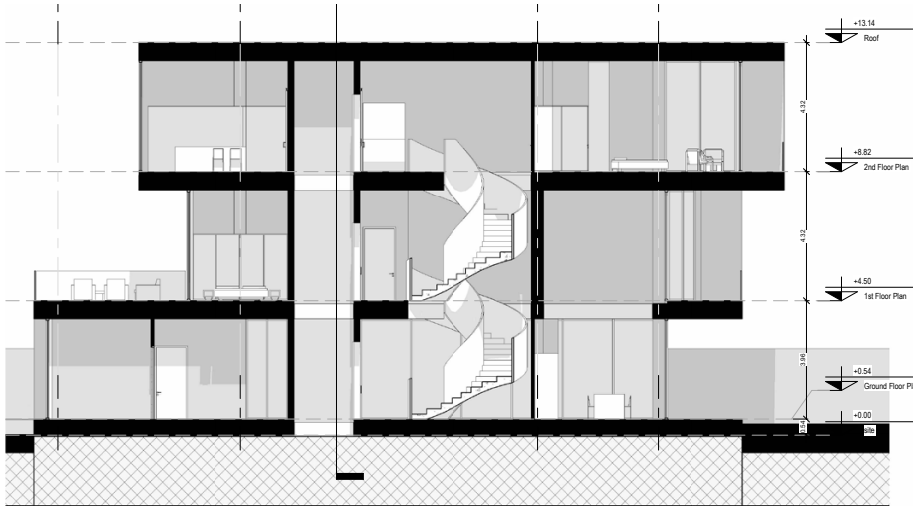
How to place the mass of the villa on the ground is the first challenge we face. Should the mass be located in front of the site and a garden be placed between the villa and the sea?
Or should the mass be located at the end of the site and we reach the villa by passing through the garden and the villa is the closest situation to the sea? Or should the mass be placed in the middle of the site?





In the north view, the terrace and wood material stand out. The presence of a swimming pool, barbecue area, shower and dressing room and a view to the sea are among the features of its northern yard. Glass facade along with white cement material and wood are the three main materials in the facade. In the south view, two terraces can be seen in the volume of the building. The floor material in the yard is also wood.

Here we present the modern design of a pleasant and large villa, which is located in the green and humid environment of Nashtaroud area in Mazandaran, on a long land with wide views facing the sea.



N amakabroud Villa

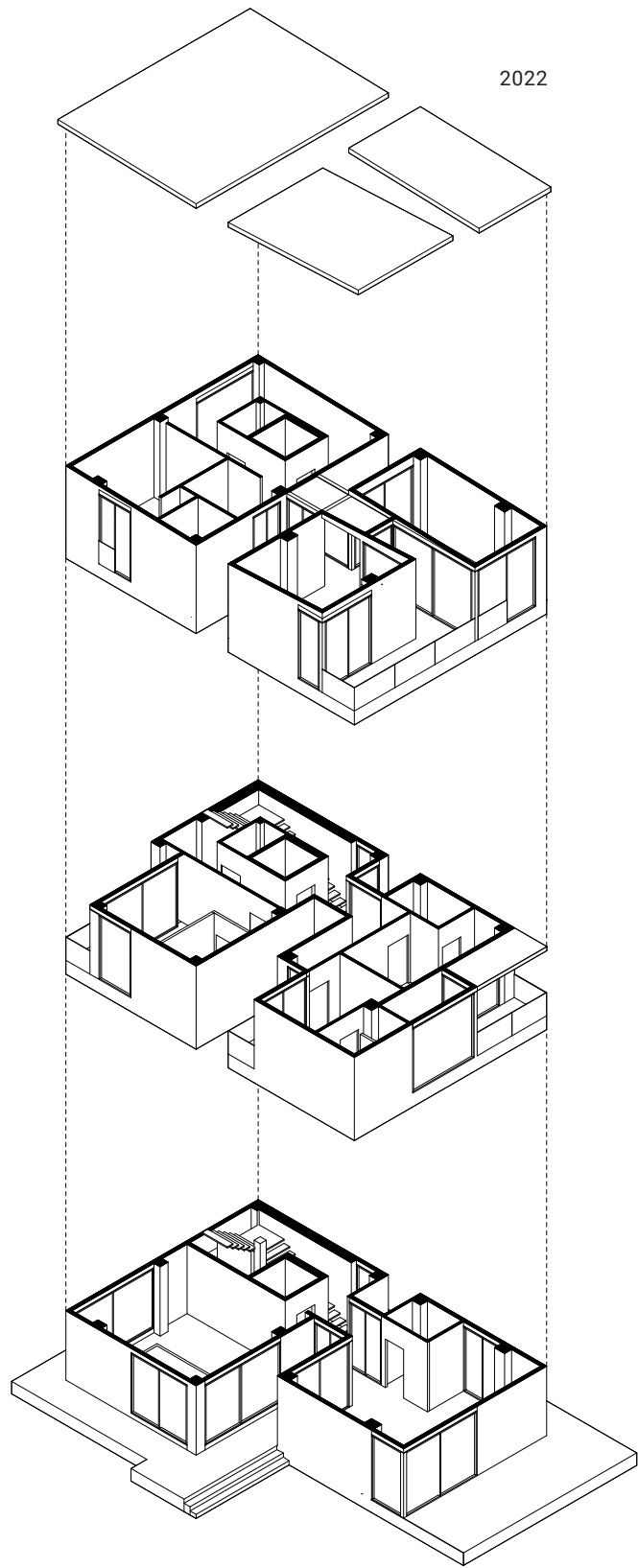
NAMAKABRUD ,MAZANDARAN
RESIDENTIAL
? M²
2022



The aim of our proposal is to preserve and enhance the special characteristics of the site - its genius loci, and that from a deep understanding of the specific nature of the place, develop a project that is inextricably connected to its context. But we also wanted to create dwellings that are very clearly of our time - reflect the requirements of modern living with open plan living, light and airy spaces and with a strong relationship to the outside space.



we present the modern design of a pleasant cute villas, which is located in the green and humid environment of Namakabroud area in Mazandaran, on a long land with wide views facing the rural land.

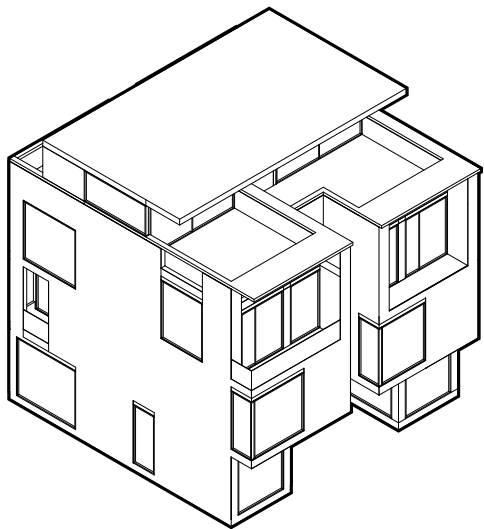




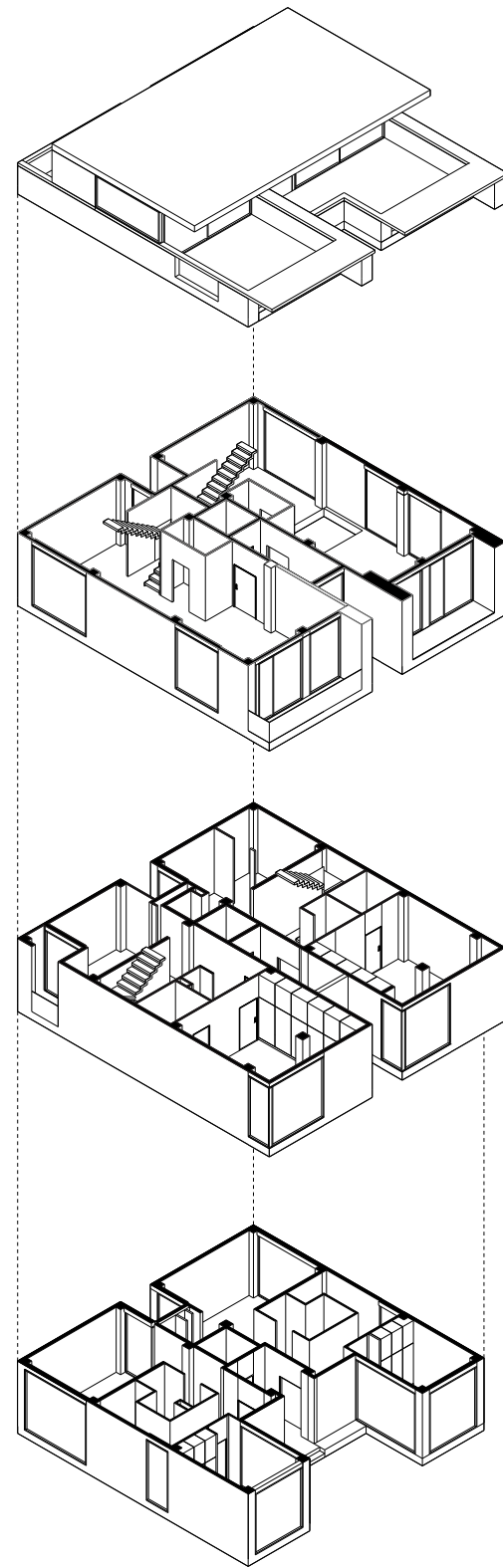
Villa 135

2022

we present the modern design of a pleasant cute villas, which is located in the green and humid environment of Namakabroud area in Mazandaran, on a long land with wide views facing the rural land.



The aim of our proposal is to preserve and enhance the special characteristics of the site - its genius loci, and that from a deep understanding of the specific nature of the place, develop a project that is inextricably connected to its context. But we also wanted to create dwellings that are very clearly of our time - reflect the requirements of modern living with open plan living, light and airy spaces and with a strong relationship to the outside space.



2022



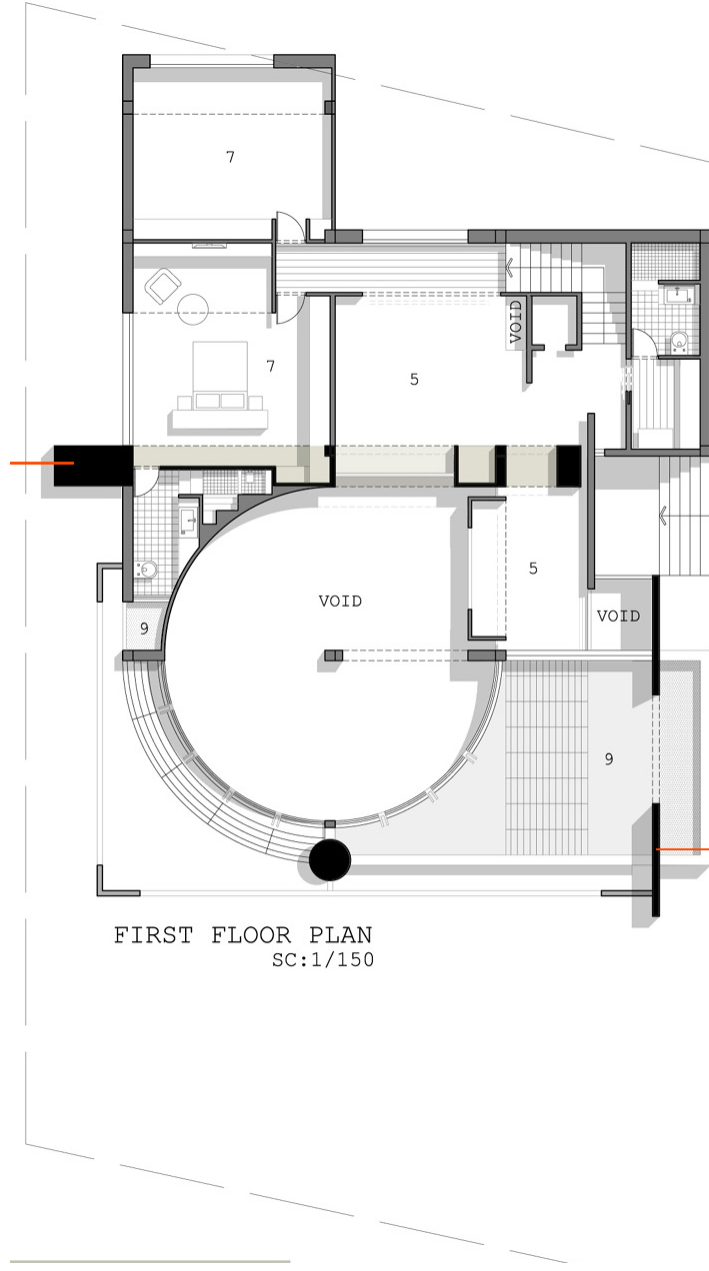
The aim of our proposal is to preserve and enhance the special characteristics of the site - its genius loci, and that from a deep understanding of the specific nature of the place, develop a project that is inextricably connected to its context. But we also wanted to create dwellings that are very clearly of our time - reflect the requirements of modern living with open plan living, light and airy spaces and with a strong relationship to the outside space.

Lavasan House 02

Honored in Memar Award, Residential Category, 2011

LAVASAN, TEHRAN
RESIDENTIAL
850 M²
2010





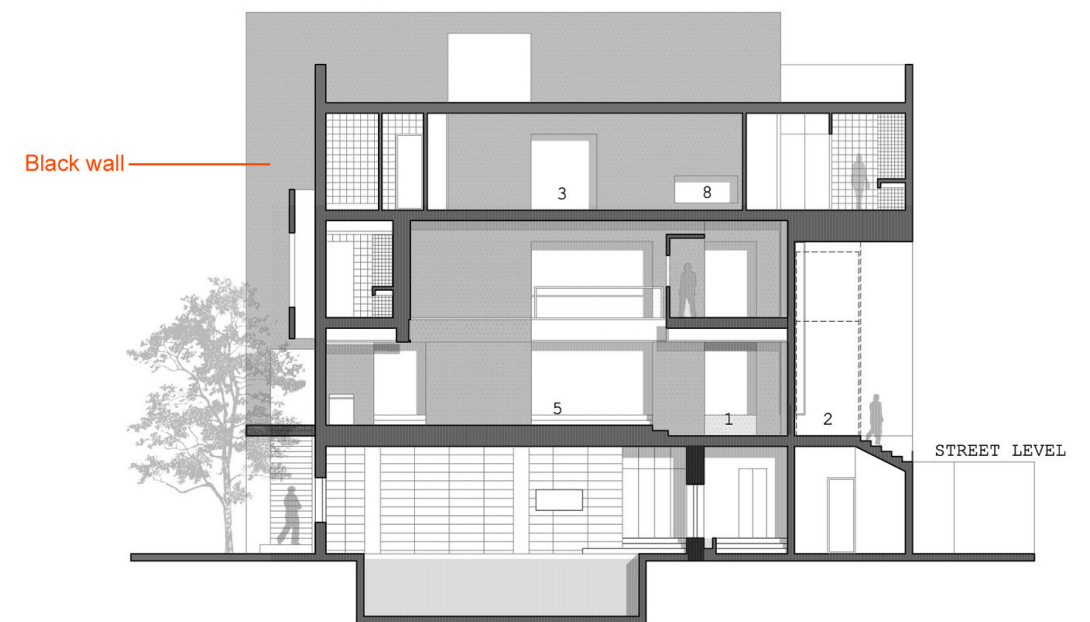


noir



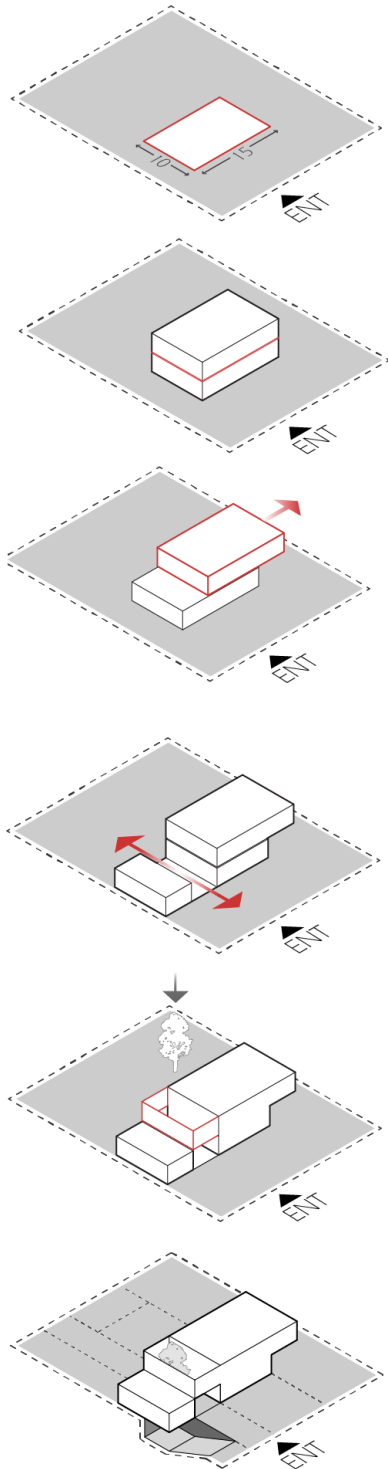
2010

109



Kordan Villa

**KORDAN, ALBORZ
RESIDENTIAL
1200 M
2020**



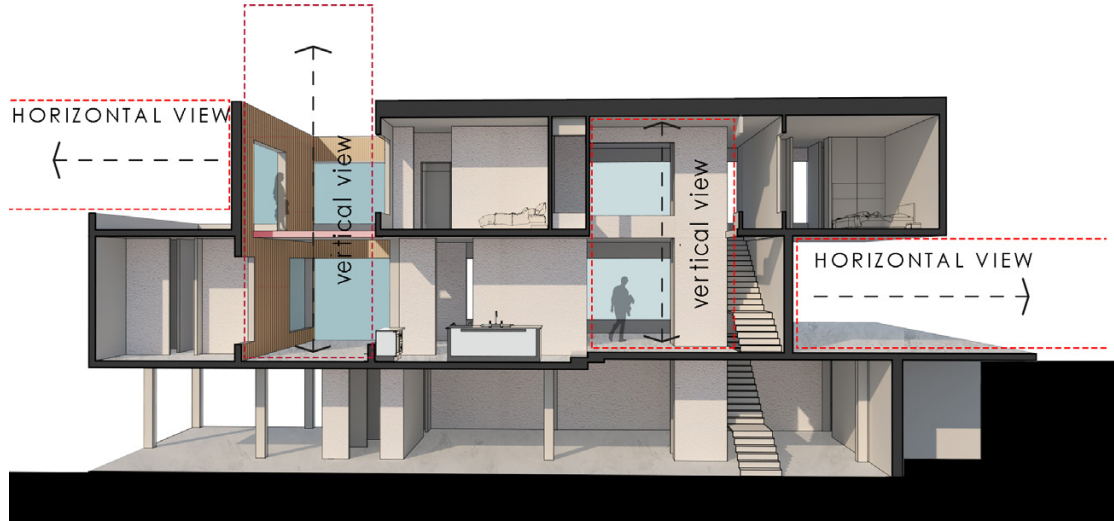


112

noir



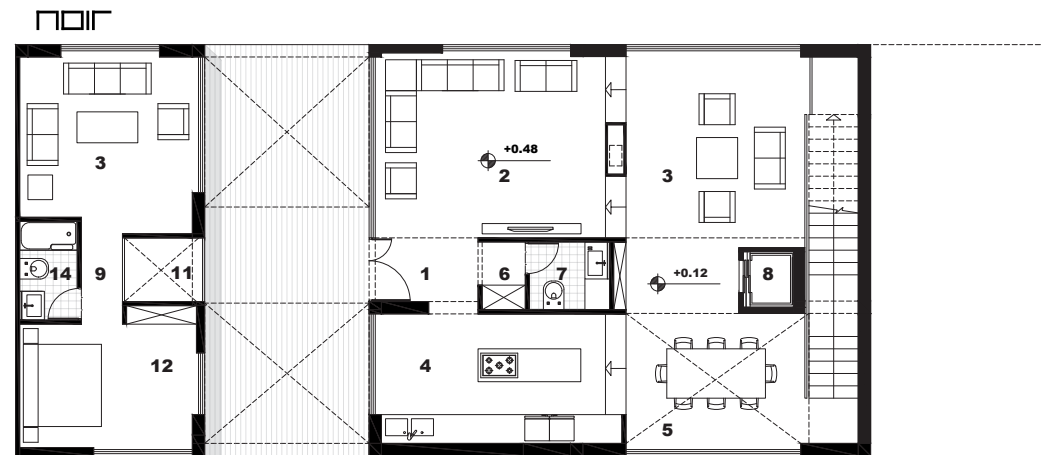
2020



113



2020



- 2020
- 1 ENTRANCE
 - 2 LIVING ROOM
 - 3 HALL
 - 4 KITCHEN
 - 5 DINING ROOM
 - 6 CLOSET
 - 7 WC
 - 8 LIFT
 - 9 GUEST ROOM
 - 10 BATHROOM
 - 11 VOID
 - 12 BED ROOM
 - 13 MASTER BED ROOM
 - 14 BATH ROOM
 - 15 STORAGE
 - 16 TERRACE
 - 17 PARTY ROOM
 - 18 MECANICAL
 - 19 ELECTRICAL

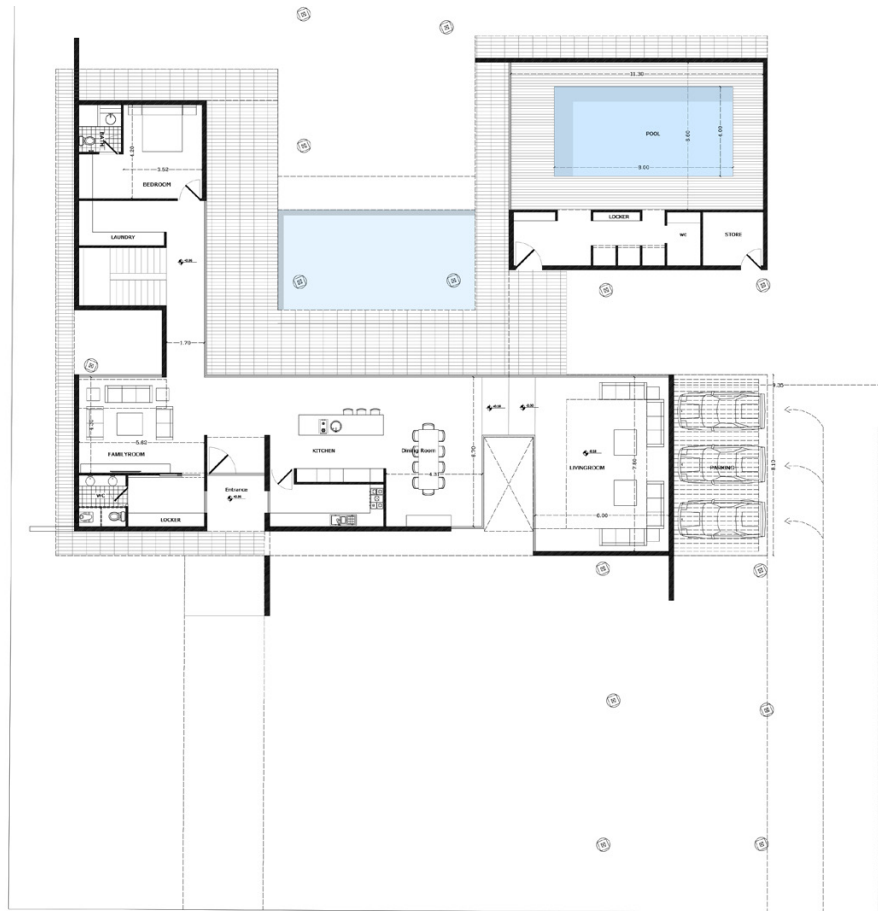
114



115

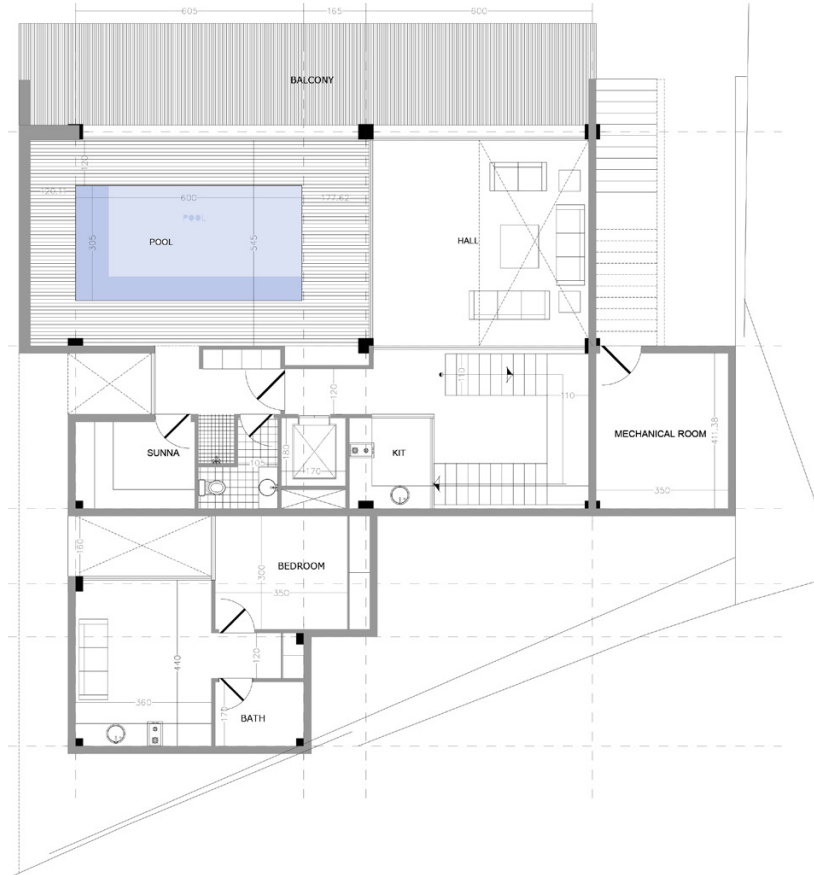


Villa Ahvaz



AHVAZ
RESIDENTIAL
? M²
2023



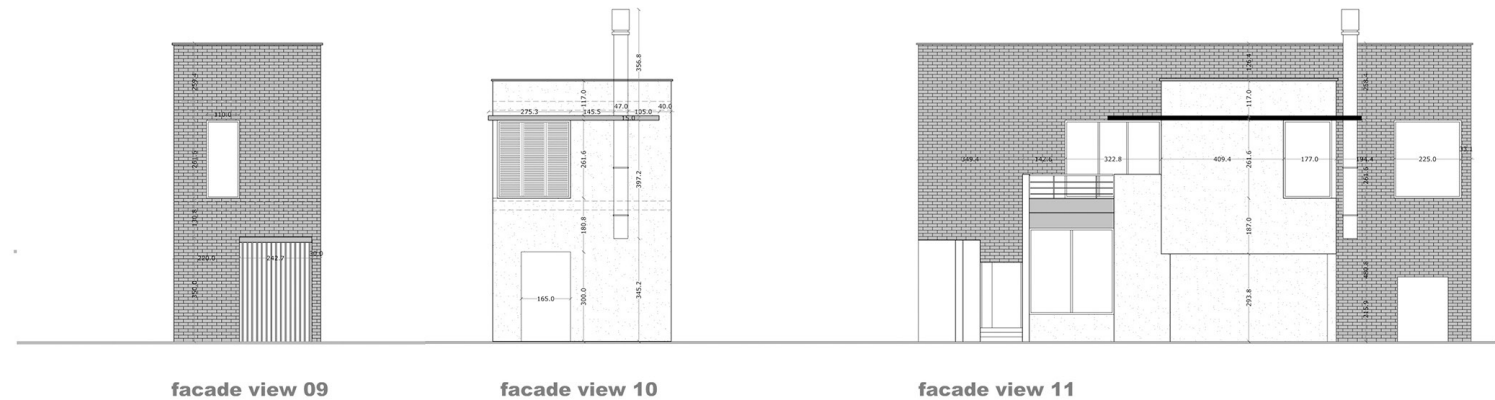


H omand House

LAVASAN, TEHRAN
RESIDENTIAL
1200 M
2013

Homand Villa

When confronted with a challenging landscape and a very specific design brief from the client as to how he envisioned this villa to be constructed, our design was strongly guided and influenced by the unusual shape of the land.





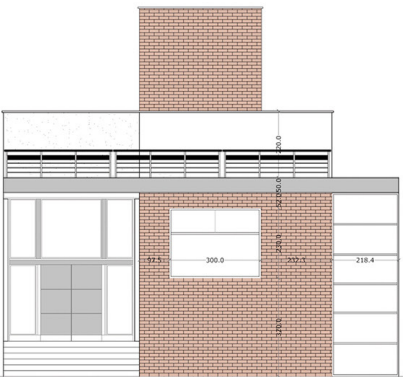
122

Design Concepts

1. When confronted with a challenging landscape and a very specific design brief from the client as to how he envisioned this villa to be constructed, our design was strongly guided and influenced by the unusual shape of the land.
2. Drawing on influences from other local Shemiranat architecture where magnificent houses are often surrounded by vast, sprawling gardens bringing with them an overwhelming sense of calm derived from the sound of running water streams and the rustling of leaves, we sought to replicate this atmosphere with this project. The building is constructed in harmony with the lines of the earth and offers a unique sense of connection with the landscape whilst offering the occupants a tremendous sense of tranquility in a truly utopian setting.
3. From whichever angle you choose to view this property, the building faces you from an interesting angle. One can attribute this unique lines of the land on which it was constructed. The interior of the property also offer the occupants a variety of truly breath-taking views of the gardens and plethora of external features.



Drawing on influences from other local Shemiranat architecture where magnificent houses are often surrounded by vast, sprawling gardens bringing with them an overwhelming sense of calm derived from the sound of running water streams and the rustling of leaves, we sought to replicate this atmosphere with this project. The building is constructed in harmony with the lines of the earth and offers a unique sense of connection with the landscape whilst offering the occupants a tremendous sense of tranquility in a truly utopian setting.



facade view 07





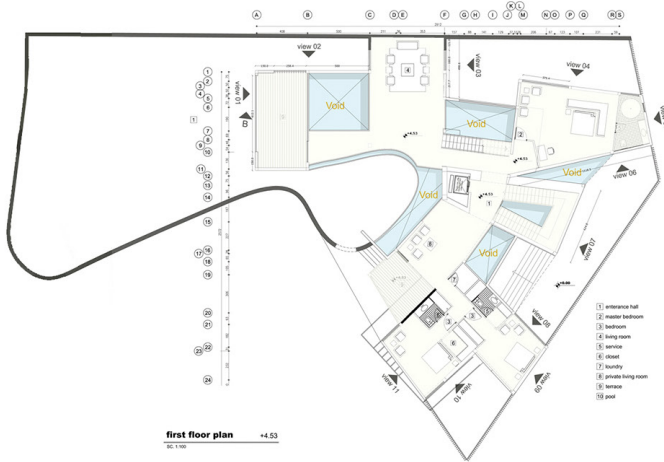
noir

2013

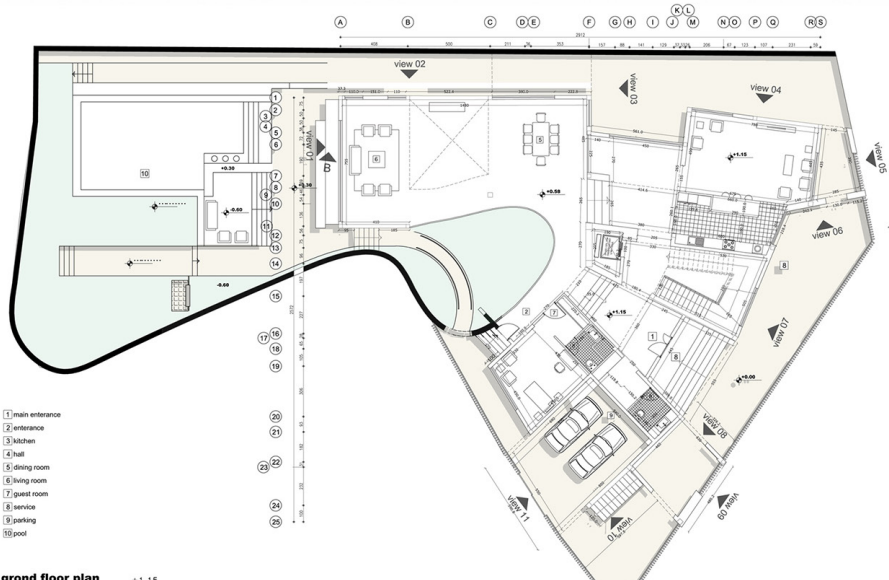


Drawing on influences from other local Shemiranat architecture where magnificent houses are often surrounded by vast, sprawling gardens bringing with them an overwhelming sense of calm derived from the sound of running water streams and the rustling of leaves, we sought to replicate this atmosphere with this project. The building is constructed in harmony with the lines of the earth and offers a unique sense of connection with the landscape whilst offering the occupants a tremendous sense of tranquility in a truly utopian setting.

Land homogenous Design



- Overview of architectural features:
- Four-storey building complex including guest living quarters
 - Full leisure complex including jacuzzi and sauna
 - Commercial-grade kitchen with professional cooking appliances
 - Caretaker's Residential Living Quarters & Boiler Room
 - Dual aspect entrances to the property



Villa 08



SECOND FLOOR PLAN / SCALE : 1/200

Producing negative spaces considering affection of functional planning of project could be one of the best answers for creating alternatives with various spaces and interior circulations meanwhile keeping up the originality of basic form. Actually our target was producing the same units including various spaces with variety and view to the sea and surroundings. This approach helped us in creation of various negative spaces. Next level was designing villa No.08, according to mentioned items in previous paragraphs, we started creation negative spaces in different alternatives. Many basic factors lead us to extract the negative spaces and reach to the final form after many revisions. These factors are, locating the main and secondary terraces, the view and perspective toward surrounding environment and vicinities and the way of lay outing required spaces.

LAVASAN, TEHRAN
RESIDENTIAL
1000 M²
2020

The villa No. 08 is one of four villas that client had ordered our design group team (Noir studio) In this township and none of them were in their vicinity. At the first level of designing procedure, we had to find a common concept for these villas. preserving thr integrity and following the leading ideas in these villas with different spaces and behaviors was our principles. Because of the same dimensional and areas of the site, we chose a cube form with equal dimen- sions and same areas for all units, considering climate affection that change the flat roof of cube to the sloped one.



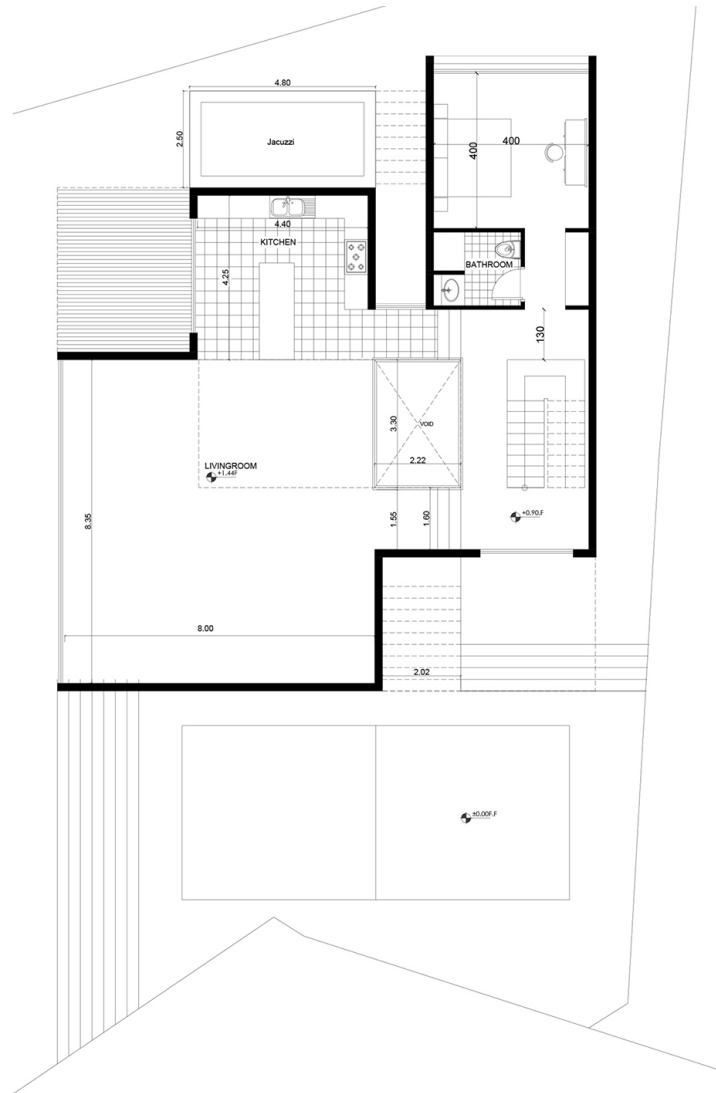
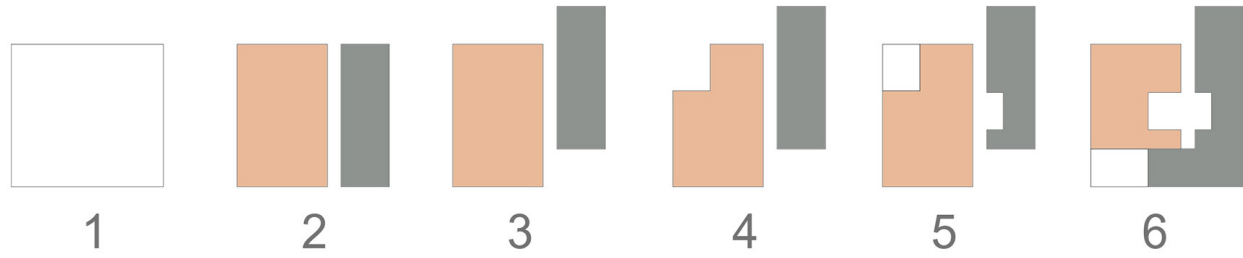
FIRST FLOOR PLAN / SCALE : 1/200



D amavand Villa

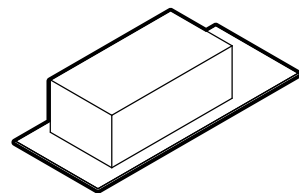
DAMAVAND, TEHRAN
RESIDENTIAL
400 M²
2019

Project is located on irregular land by 670 square meters in a land-sloped town. The design planned on three story so that sits on a site which solve dispute level to main access of street. Accordingly created two level yards to different accesses to floors.

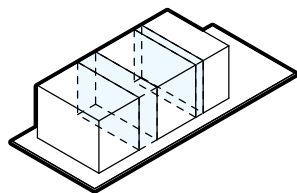


This division led to part a west yard (main yard) and east yard. As a result of that, the basic form of volume exploded to two part which synthesize with yards, together. In the following, making a void between a gap by division towards the skylight, provide the internal

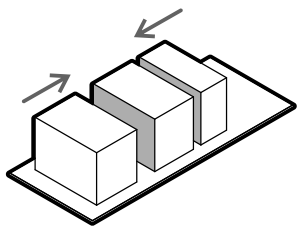
Sea House 02



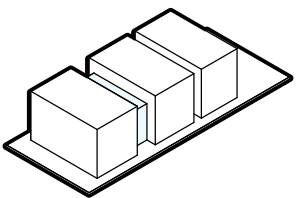
01.Initial Volume



02.Dividing the Volume into Three Parts to Enhance Spatial Organization, Allow Natural Lighting, and Create an Open Courtyard and Pool Area Together

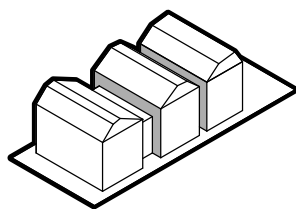


03.Shifting the Central Volume in Relation to the Courtyard to Interact with the Open Space

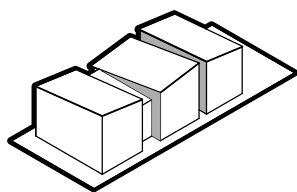


04.Focusing on Intermediate Spaces, Designing Connections Between Volumes, and Incorporating Skylights , etc.

**KHANE DARYA, MAZANDARAN
RESIDENTIAL
581 M²
2025**

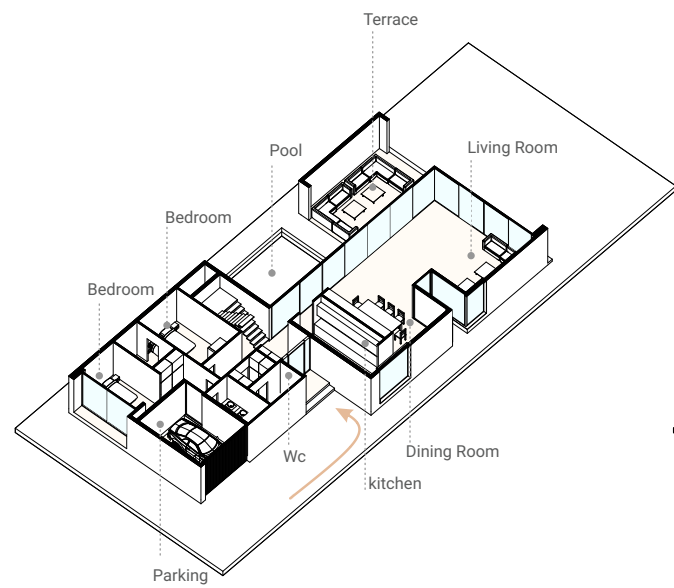


05.Final Volume -01

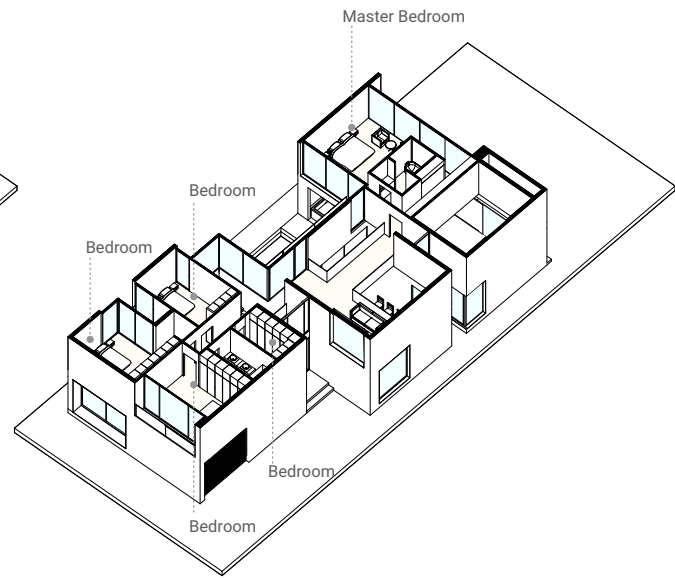


06.Final Volume -02





Ground Floor

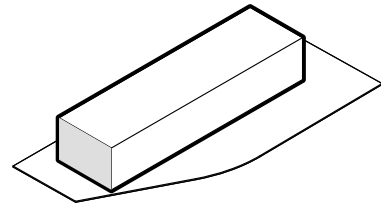


First Floor

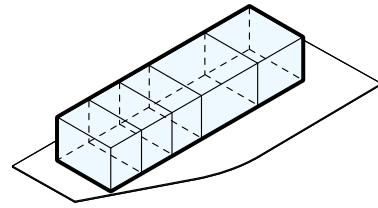


Golchin Villa

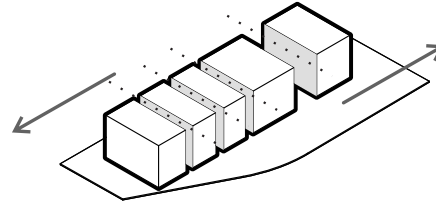
01.Initial Volume



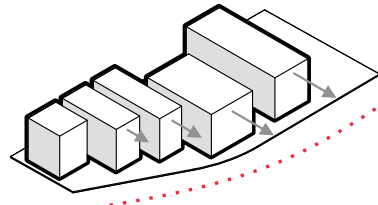
02.Dividing the main volume into smaller masses.



03.Creating separation between the masses for views, ventilation, natural light, and interstitial spaces.

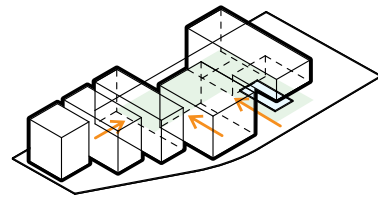


04.Orienting the fragmented masses toward the road and connecting them to the urban fabric.

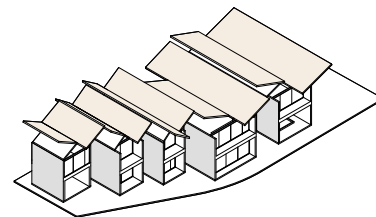
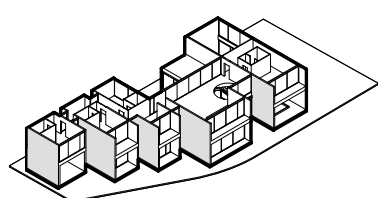


GOLCHIN, MAZANDARAN
RESIDENTIAL
886 M²
2025

05.Arrangement of green spaces (courtyard) and the pool within the masses, establishing a direct connection between nature and architecture.



06.Final volume.



07.Adding vernacular structural roofs with inverted slopes on the volume.



