



# **KBATAN**

BALCONY ;

Block b-16

# DESIGN PRINCIPLES

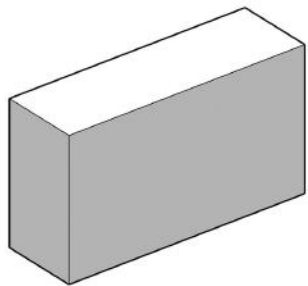
## AESTHETICS:

1. EMPHASIS ON EKBATAN AND THE IDEA THAT THE ADDED ELEMENTS ARE SECONDARY TO THE MAIN BLOCK.
2. EXPOSED STRUCTURE TO EMPHASIZE THE ADD-ON NATURE OF THE BALCONIES.
3. USE OF DISTINCTIVE COLORS TO HIGHLIGHT THE ADD-ON CHARACTER OF THE STRUCTURE.

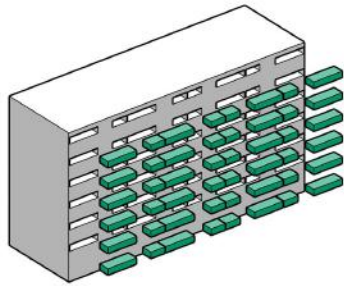
## FUNCTIONALITY:

1. USE OF TERRACES FOR BEDROOMS AS SEMI-OPEN, PERSONAL SPACES.
2. ADD-ON BALCONIES FOR THE LIVING ROOM AS SEMI-PRIVATE SPACES.
3. BALCONIES SERVING AS SPACES FOR WORK, RELAXATION, EXERCISE, RECREATION, AND EVEN SLEEP.
4. BALCONIES AND TERRACES AS GREEN SPACES.
5. USE OF BALCONIES AND TERRACES FOR FRESH AIR AND NATURAL LIGHT.
6. CREATION OF A PORTICO THROUGH EXPOSED STRUCTURAL COLUMNS.

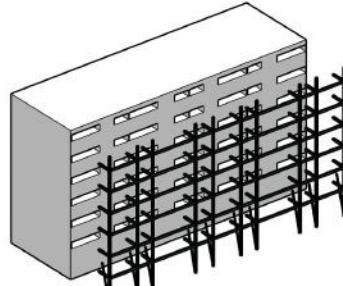
# DESIGNING PROCESS



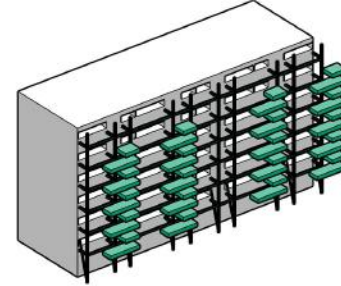
1- Base block



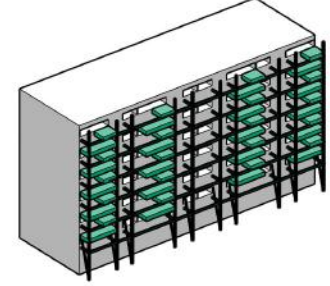
2- Subtract Terraces



3- Add Structure

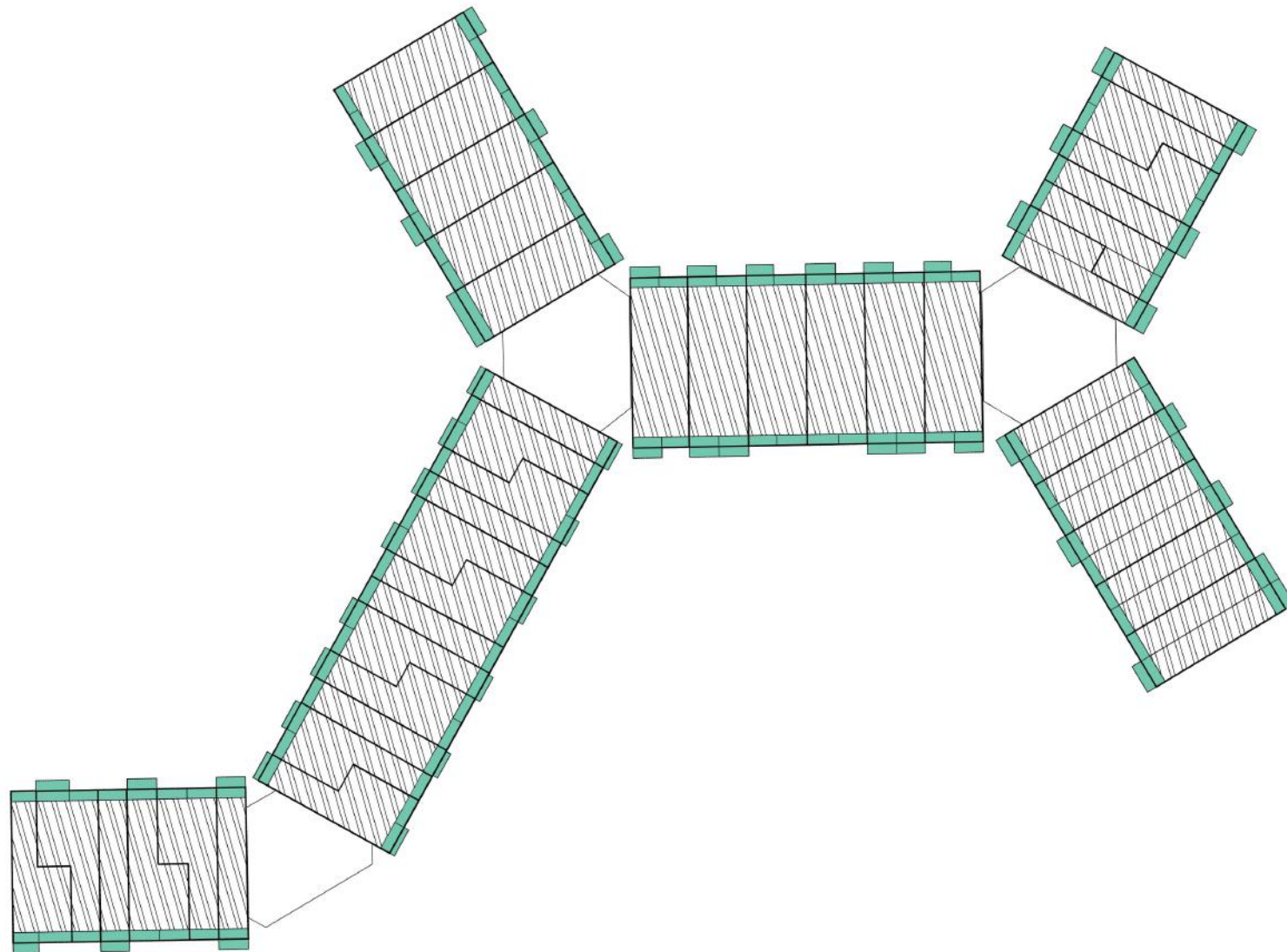


4- Add Terraces



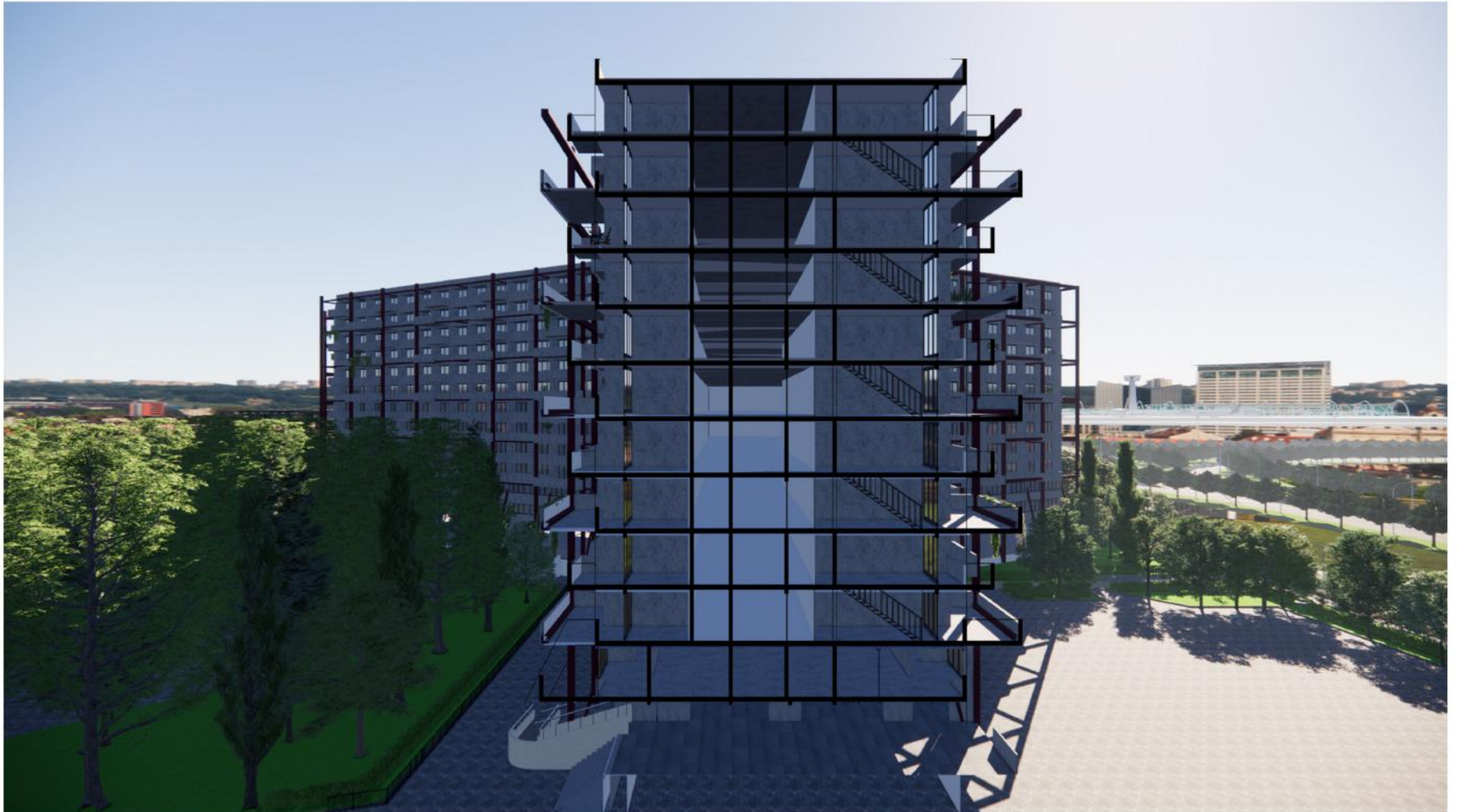
5- Final Form

# SITE OF PROJET



EKBATAN

# SECTION





# OUTDOOR VIWE



# OUTDOOR VIWE





# OUTDOOR VIWE

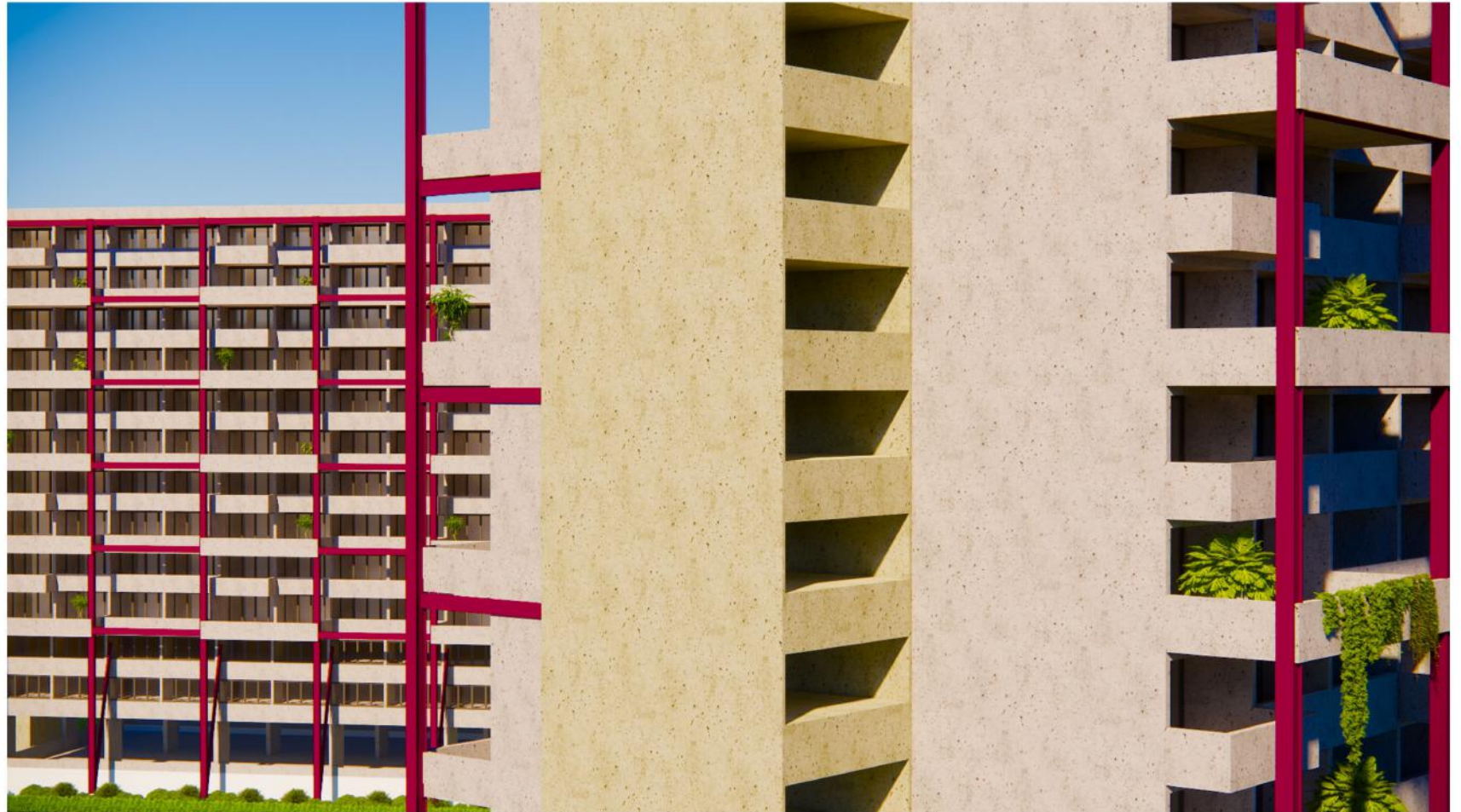




# OUTDOOR VIWE



# OUTDOOR VIWE





# OUTDOOR VIWE





# OUTDOOR VIWE

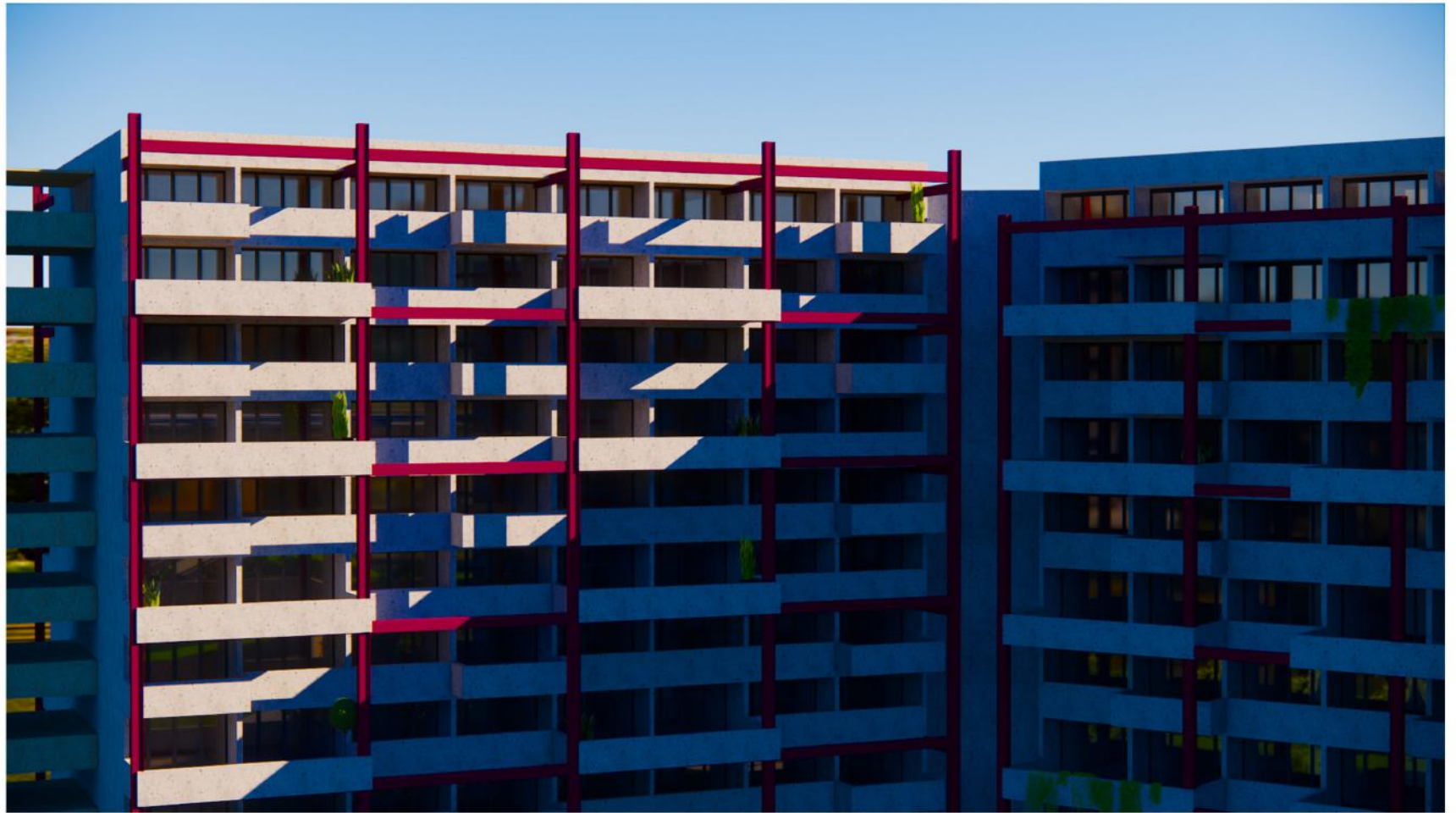


# OUTDOOR VIWE





# OUTDOOR VIWE





# OUTDOOR VIWE



# INTERIOR DESIGN

## BALCONY AS A LIVING SPACE





# INTERIOR DESIGN

## BALCONY AS A SOCIAL INTERACTION SPACE





# INTERIOR DESIGN

## BALCONY AS A SOCIAL INTERACTION SPACE



# INTERIOR DESIGNNE

BALCONY AS A LIVING SPACE





# INTERIOR DESIGNNE





# INTERIOR DESIGNNE

