

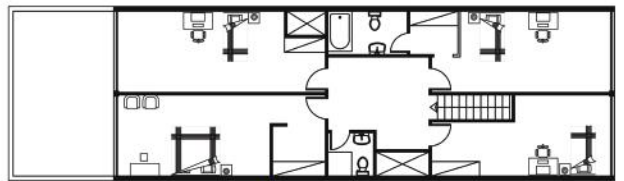
EKBATAN

Balconies serve as a link between the interior of residential units and the outside environment. This creates a stronger connection between the residents and their surroundings, fostering a deeper relationship with the urban space. Additionally, this sense of continuity makes the entire project appear as a cohesive, interconnected community, rather than individual units standing separately and without coordination



S
a
m
p
l
e

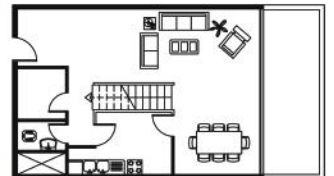
P
l
a
n



Second Level ▲

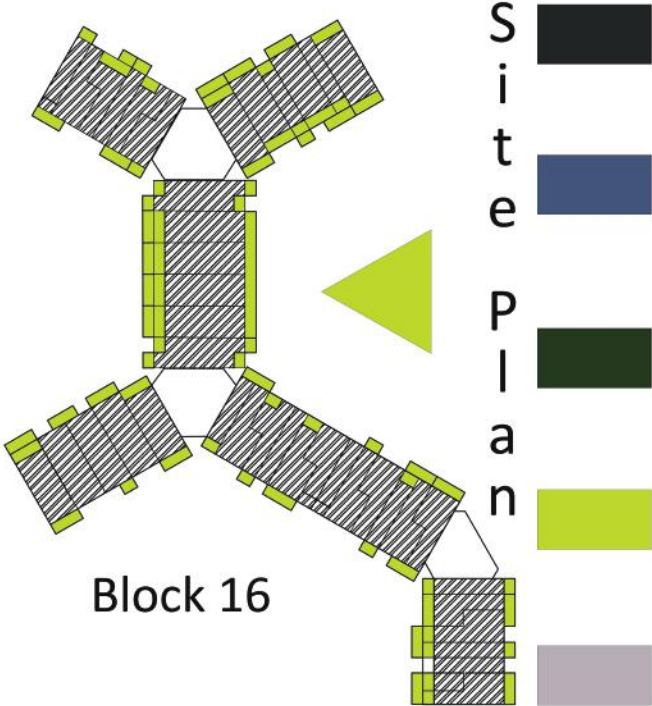


First Level ►





E
K
B
A
T
A
N



B
A
L
C
O
N
Y

