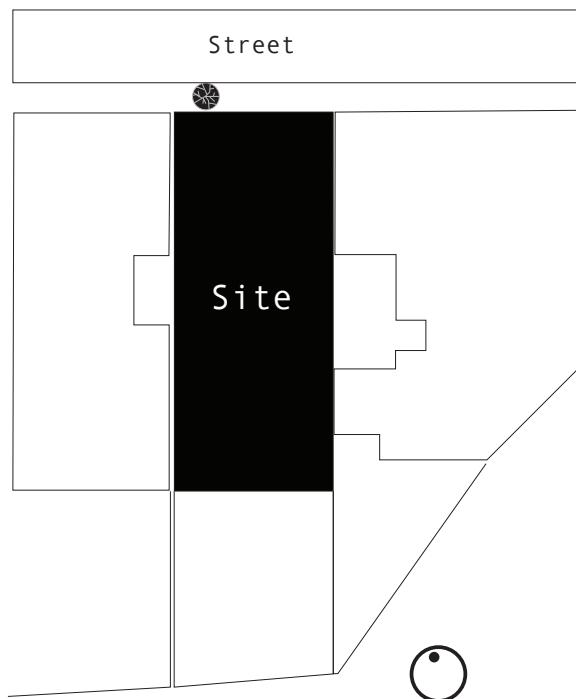


“Connection with nature in architecture is not an option; it is a necessity that defines the soul of a building.”

Kamran Diba



Location

5th floor	Residential
4th floor	Residential
3th floor	Residential
2nd floor	Residential
1st floor	Residential
Ground floor	Looby
Basment	Parking
-2 basment	
-3 basment	Prayerhall

Program

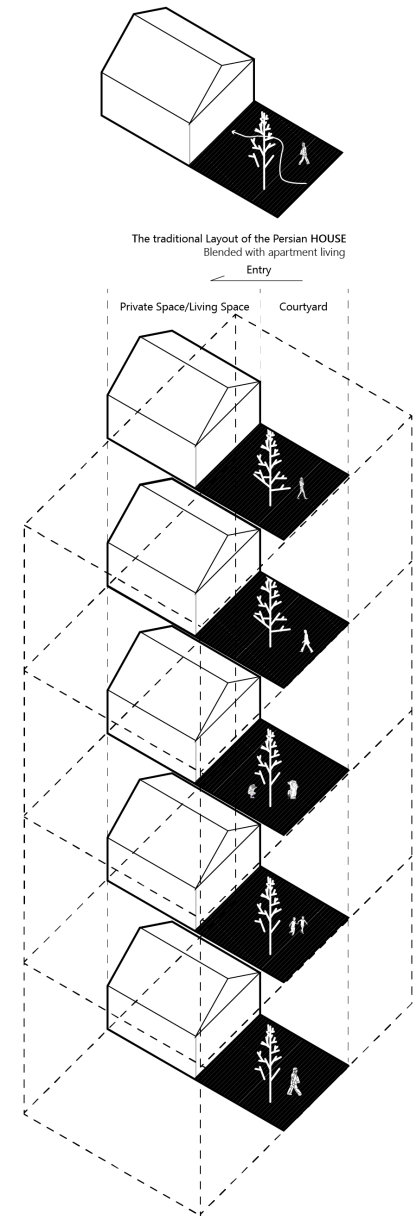
# Idea

In designing Maka 4 (Narenjestan), our approach focused on the impactful integration of nature as an inseparable element of contemporary architecture. The tree standing in front of the building served as a valuable relic of the land's past, inspiring the core concept of our design. This tree, beyond its visual presence, became a symbolic element shaping the project. As a result, we decided to align the terraces along its branches and shade, creating a dynamic connection between natural and architectural spaces. Given the single-unit structure of the building, we designed the units to evoke the charm of traditional villa homes, where entry was often through a courtyard. This concept was implemented here by designing entrances that allow for natural airflow between indoor and outdoor spaces. This feature not only facilitates ventilation but also enables guests to access the terrace directly without entering the main living space.

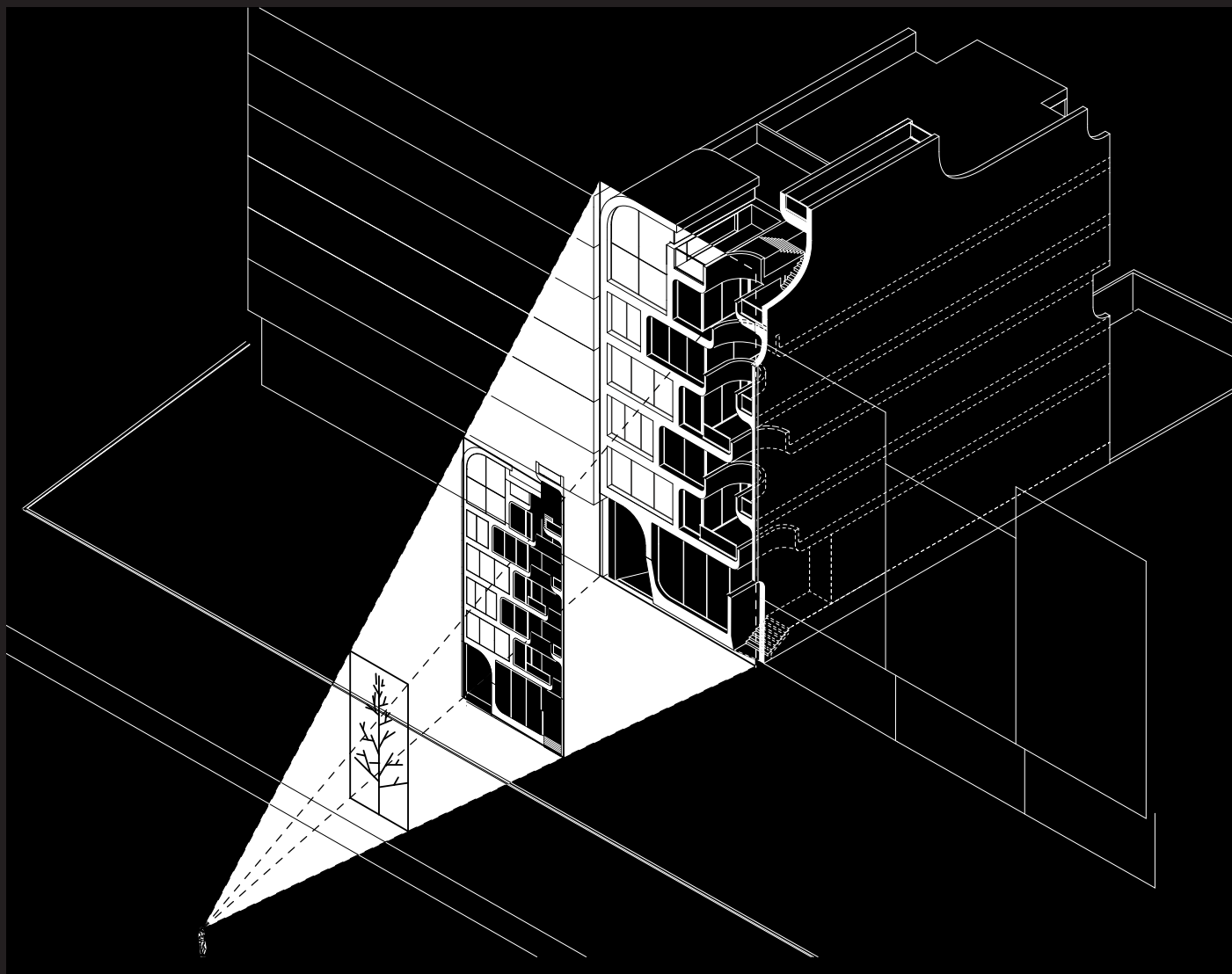
The top floor was designed as a unique space, offering independent access from the terrace to the rooftop. With a higher ceiling, this unit provides the opportunity to enjoy a private rooftop equipped with a jacuzzi or pool, creating an exclusive retreat for its residents.

In the Hosseiniyeh Hall, we employed a creative approach by designing a ramp that introduces an open void. This void not only enhances the aesthetic quality of the space but also allows natural light to penetrate the interior, creating a bright and inviting environment.

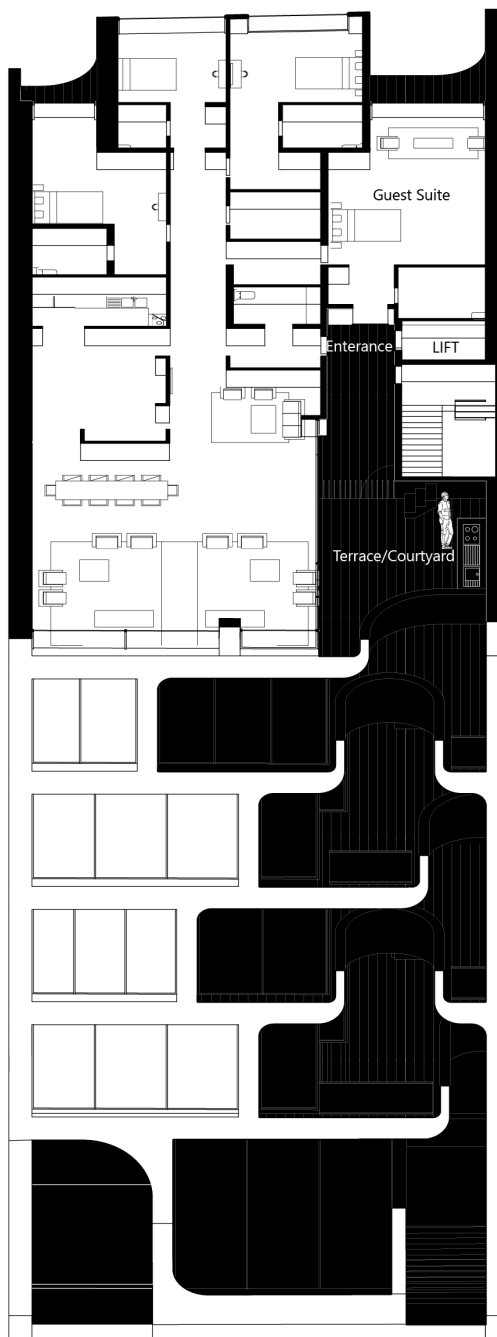
In summary, Maka 4 (Narenjestan) is an effort to harmonize nature with architecture, where each element interacts with the other to deliver a distinct urban living experience.





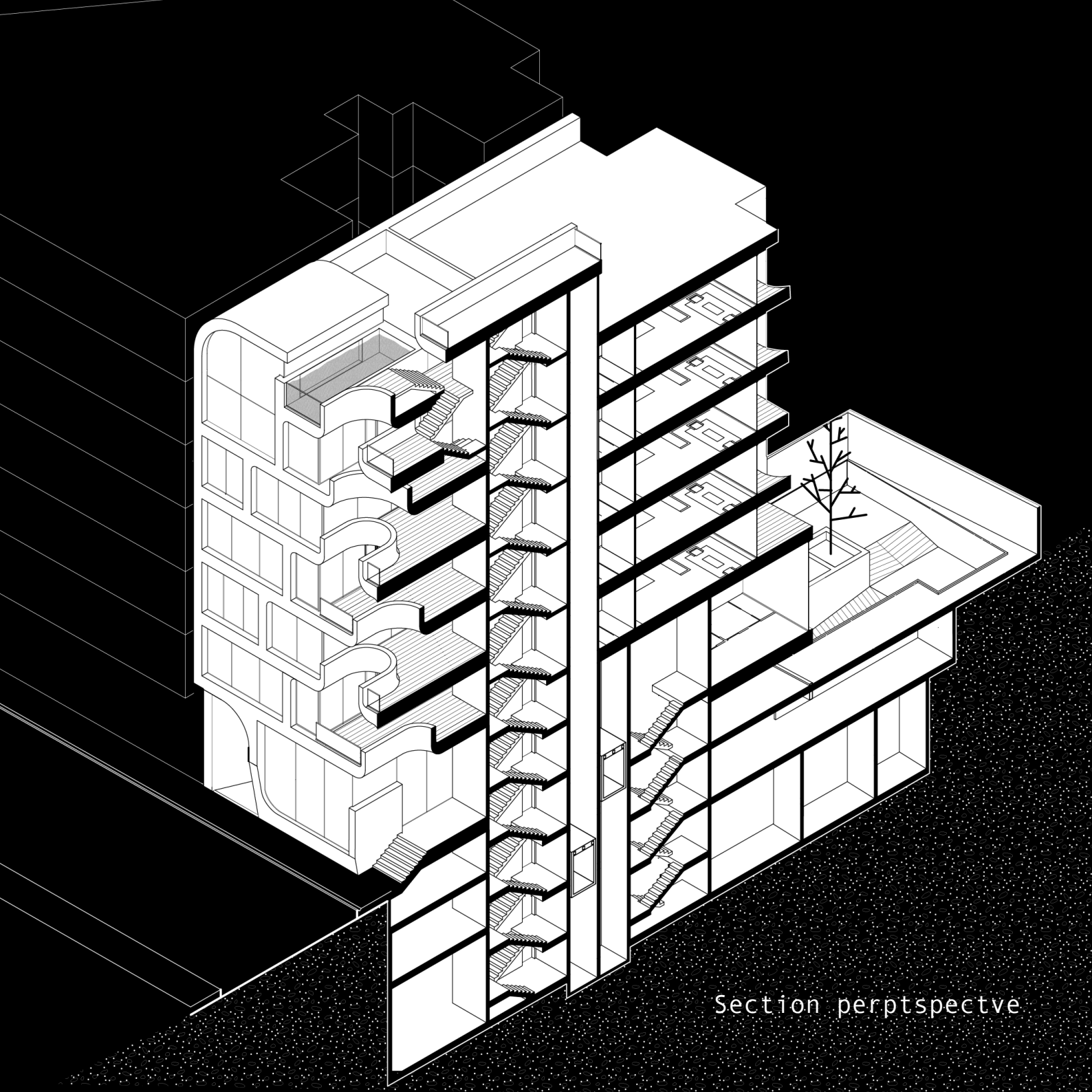


concept diagram

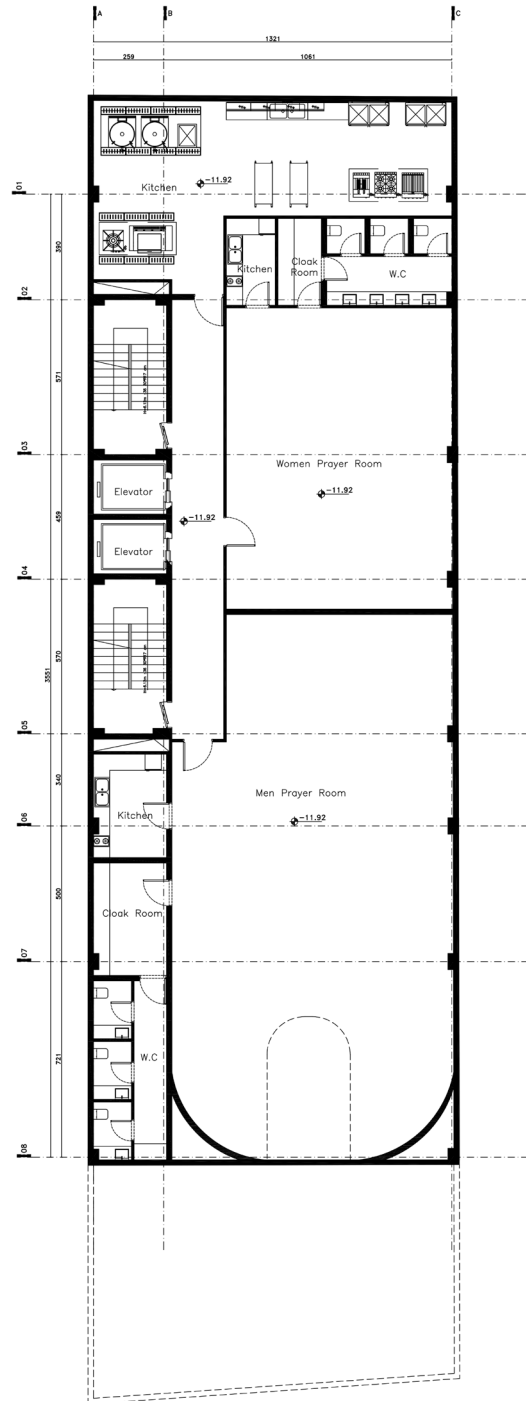


Private and Semi-Private Spaces

Terrace/Courtyard + Public Spaces



Section perptspective

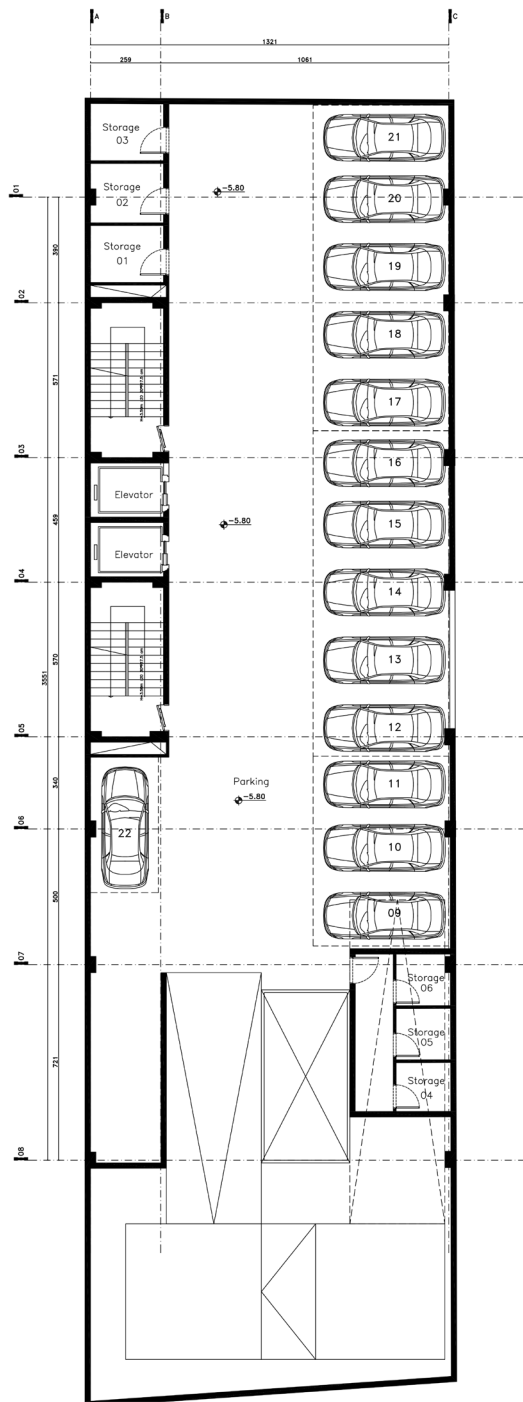


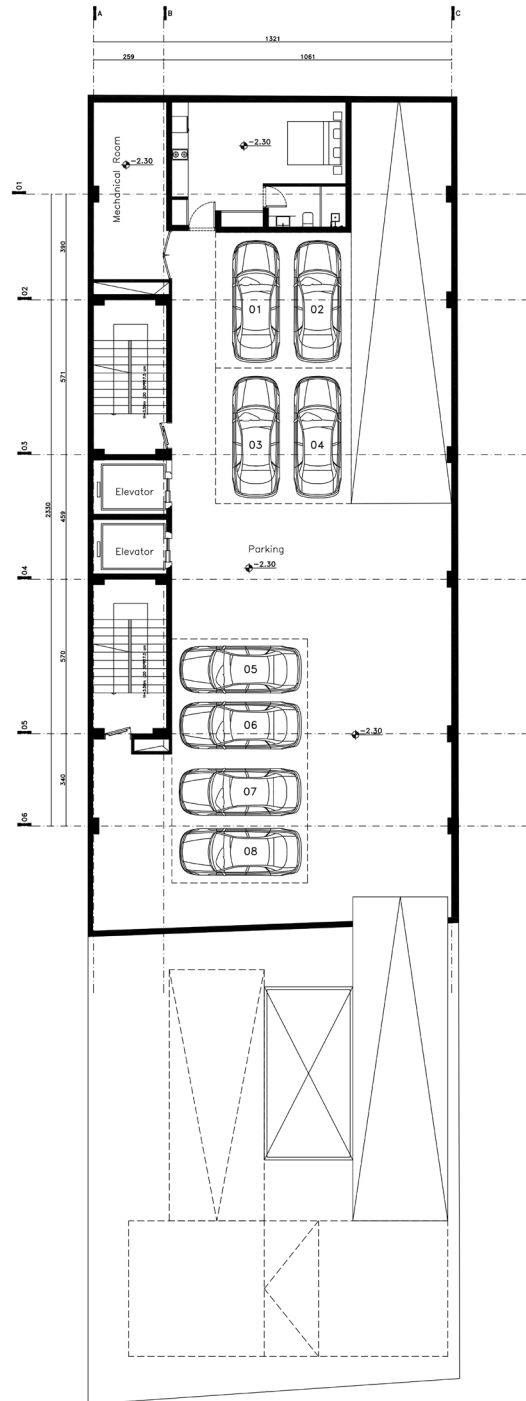
# Prayer Hall Plan -3 Basement

total area :  
537.79 m<sup>2</sup>

Parking  
Plan  
-2 basment

total area :  
512.48 m<sup>2</sup>



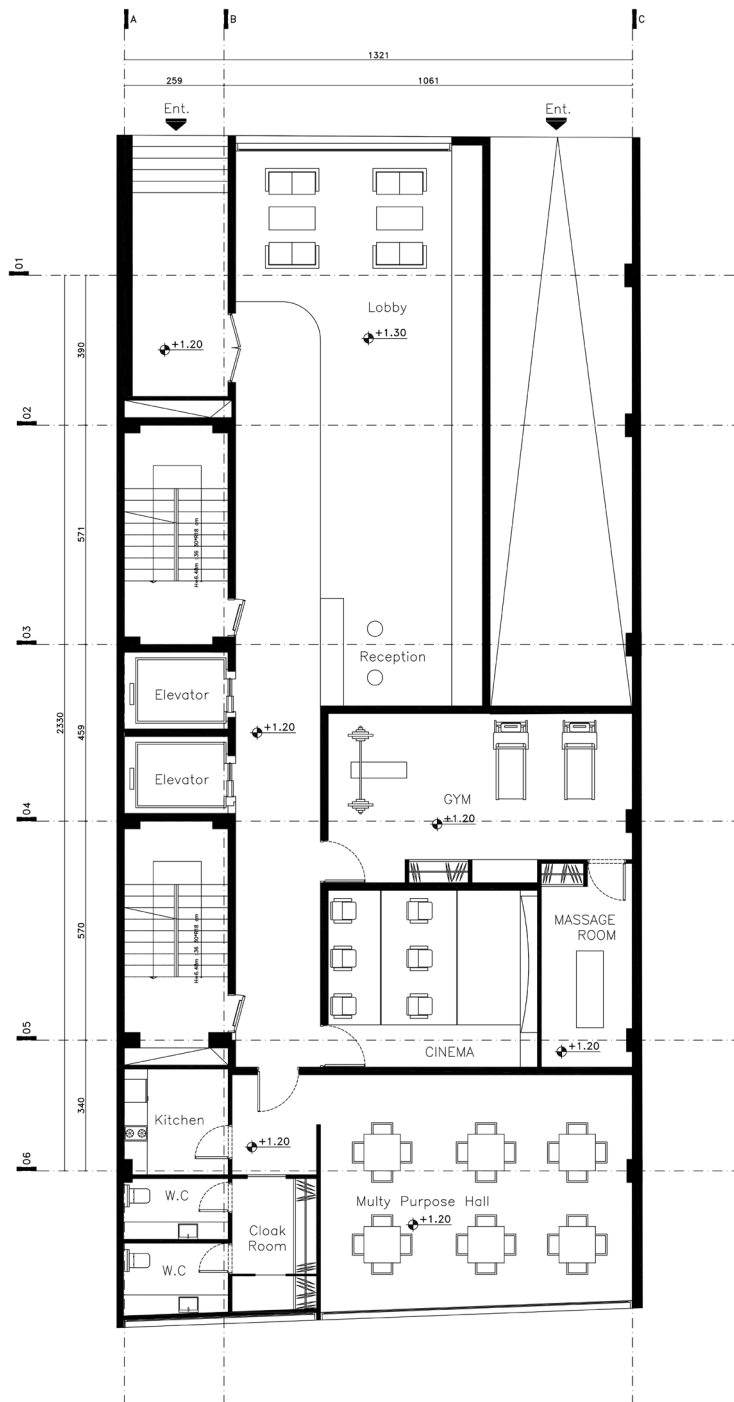


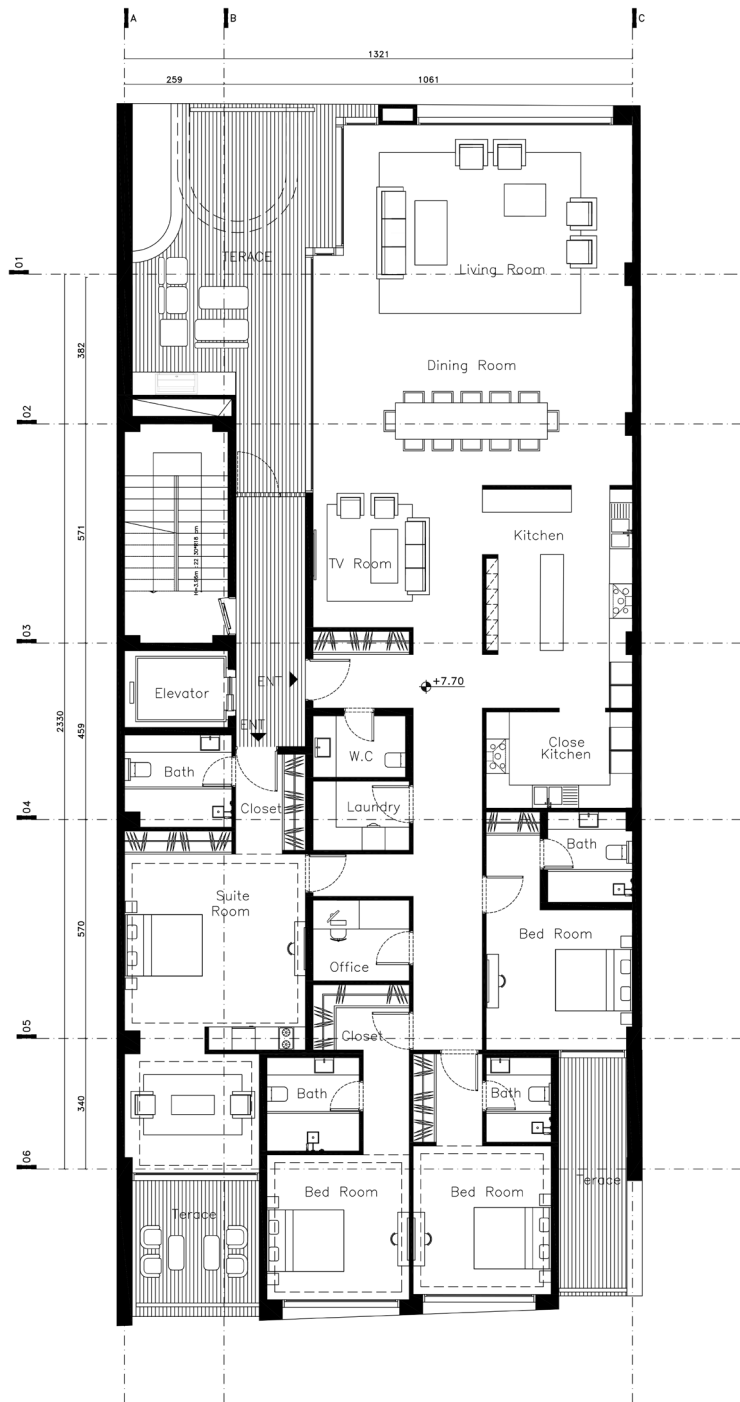
# Parking Plan Basement

total area :  
419.06 m<sup>2</sup>

Main lobby  
Plan  
Ground floor

total area :  
419.06 m2





Residential unit  
Plan  
1st floor

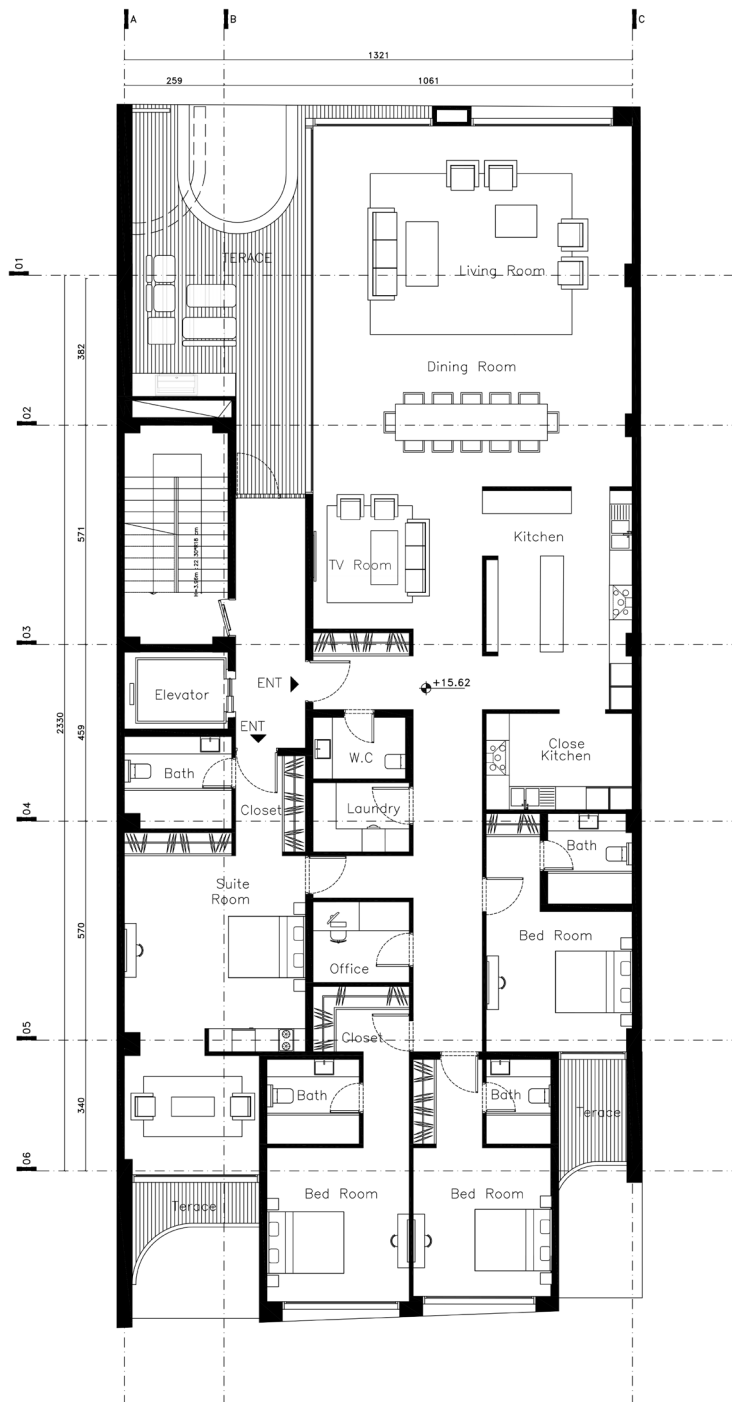
total area :  
403.62 m<sup>2</sup>



Residential unit  
Plan  
2nd floor

total area :  
402.97 m2

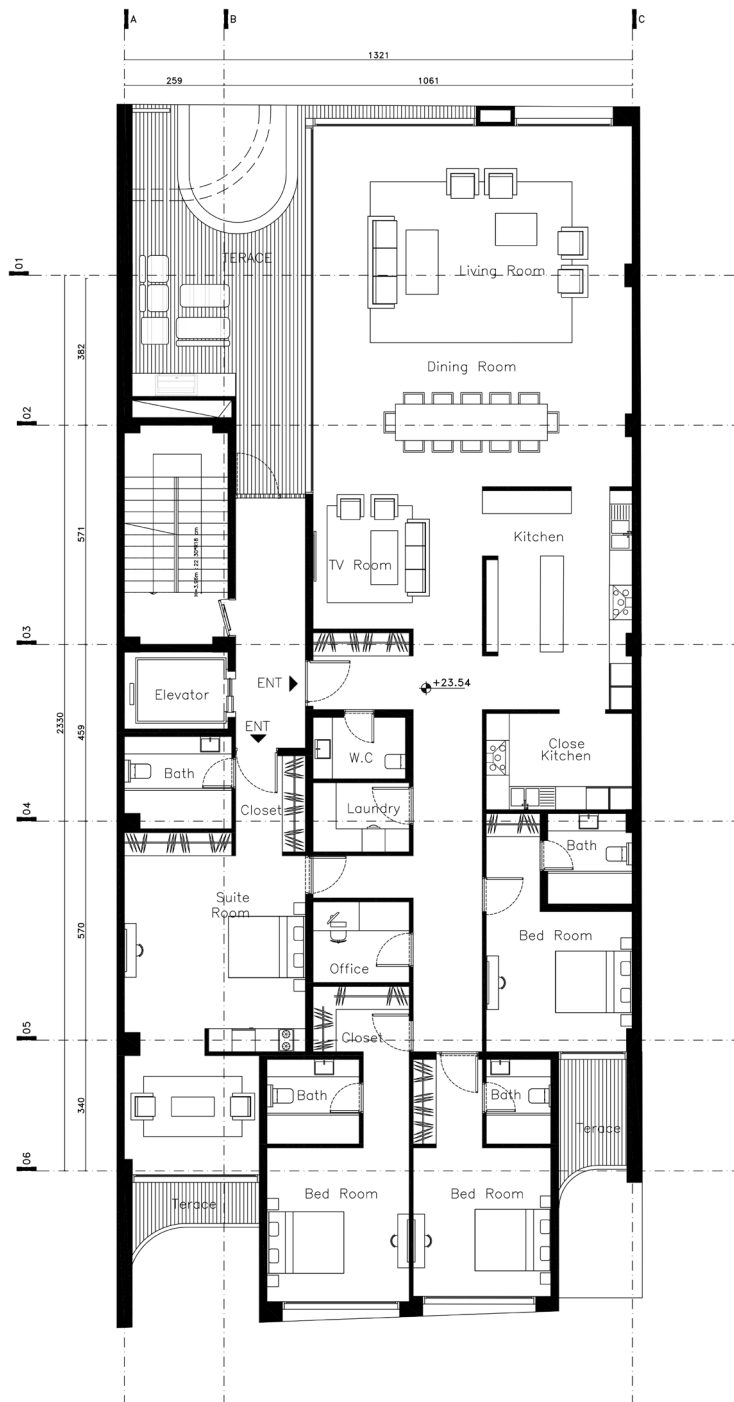
```
total area :  
402.97 m2
```

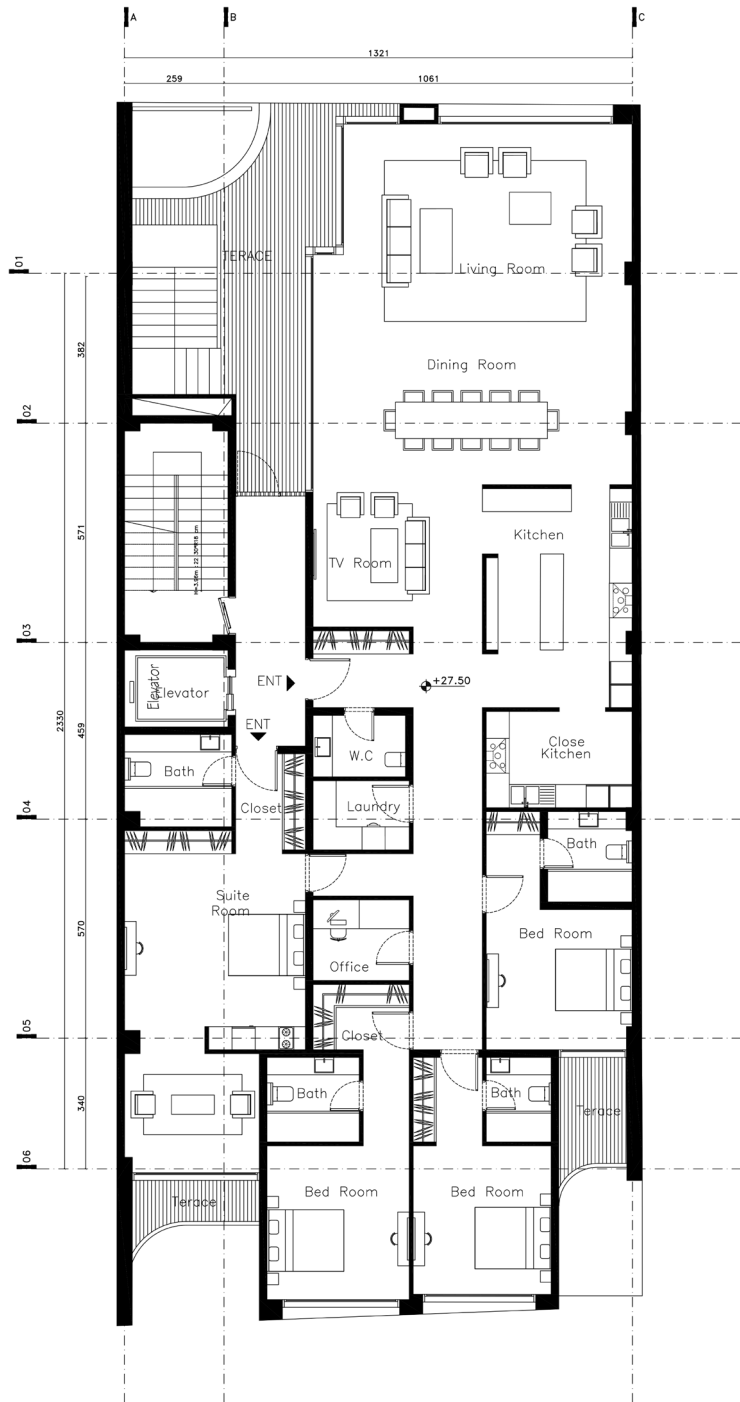




Residential unit  
Plan  
4th floor

total area :  
403.99 m2



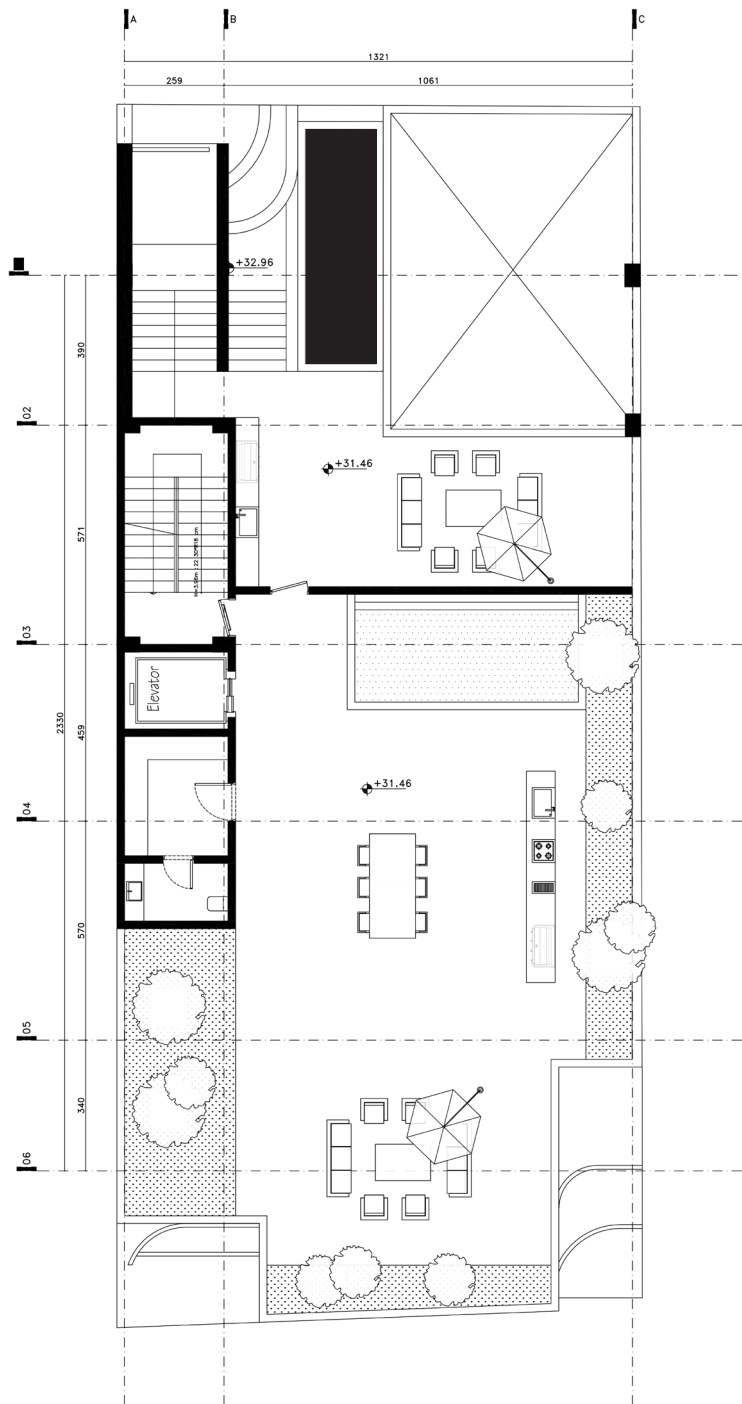


Residential unit  
Plan  
5th floor

total area :  
407.88 m<sup>2</sup>

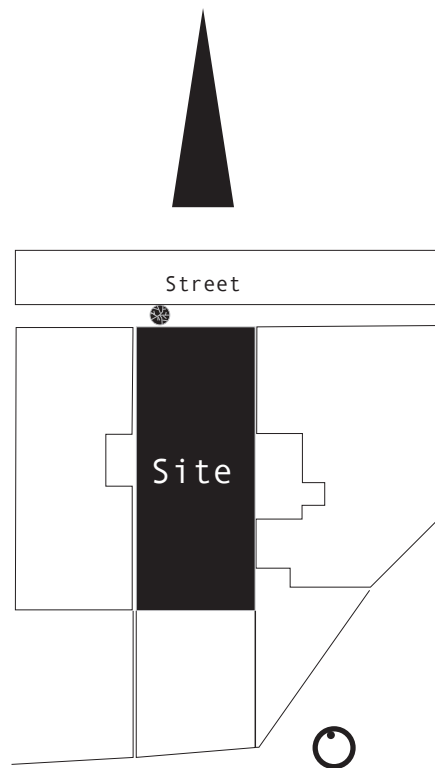
Residential unit  
Plan  
Roof

total area :  
407 m<sup>2</sup>



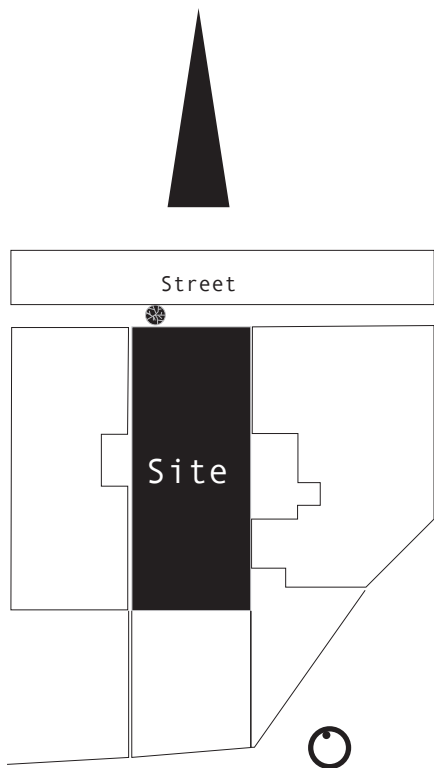


NORTH FACADE VIEW



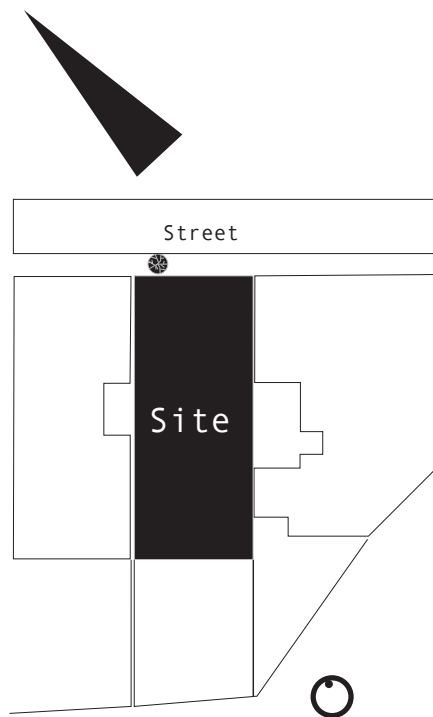


NORTH FACADE VIEW



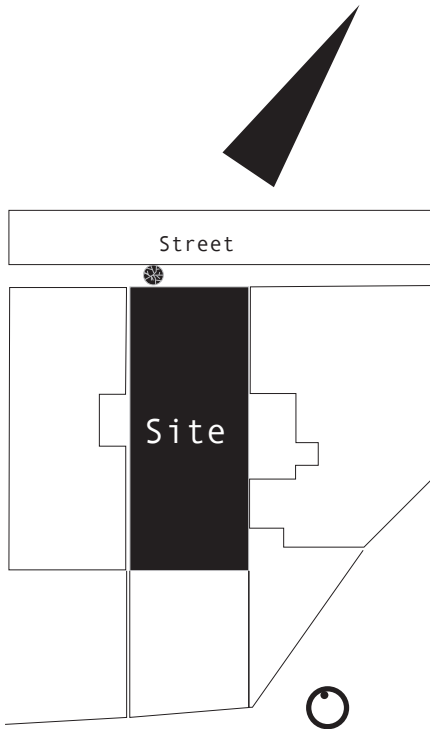


NORTH STREET VIEW



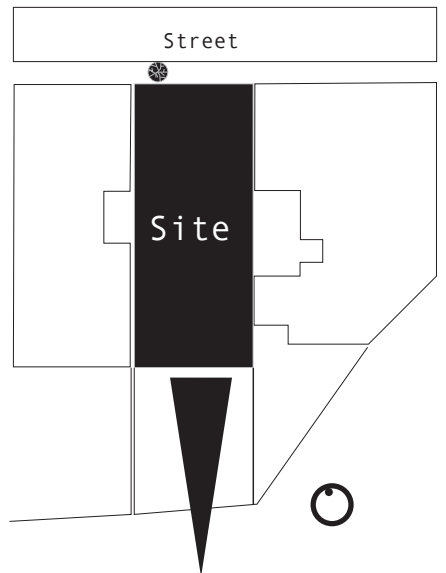


NORTH ARIAL VIEW



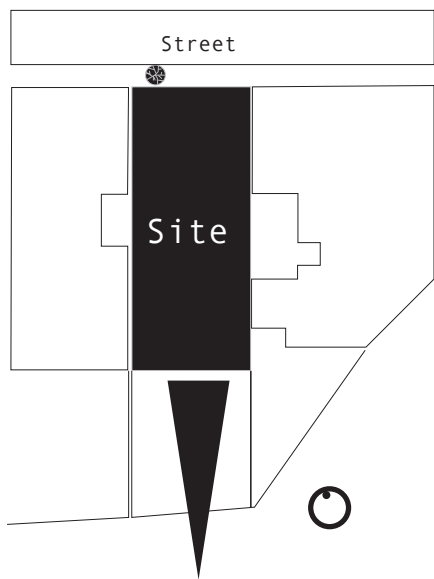


SOUTH FACADE VIEW





SOUTH FACADE VIEW



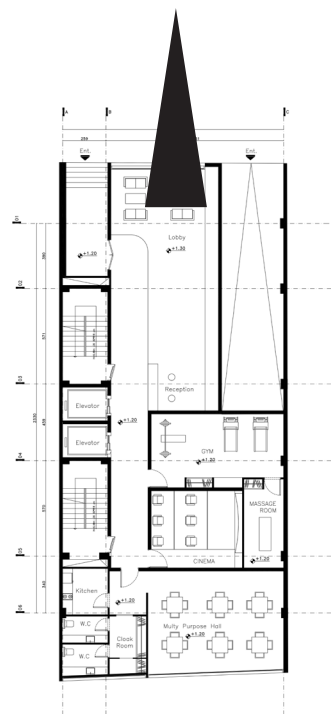




Reception



## MAIN LOOBY VIEW







## UNITS LOOBY VIEW



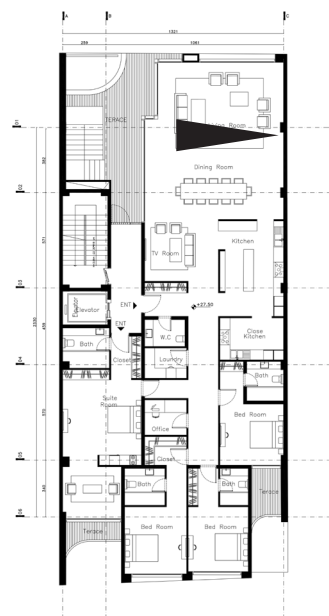








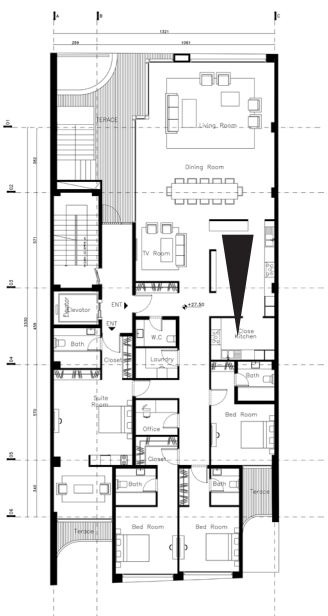
## UNITS LIVING ROOM VIEW







## UNITS KITCHEN VIEW



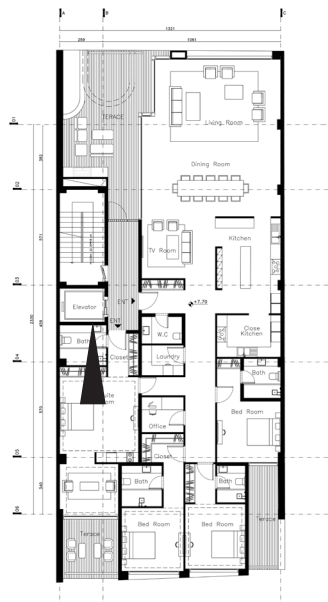








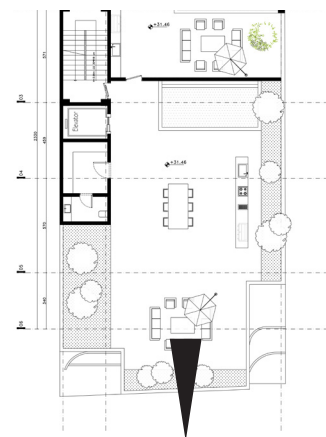
## UNITS SUITE ROOM VIEW





Roof garden -day / night





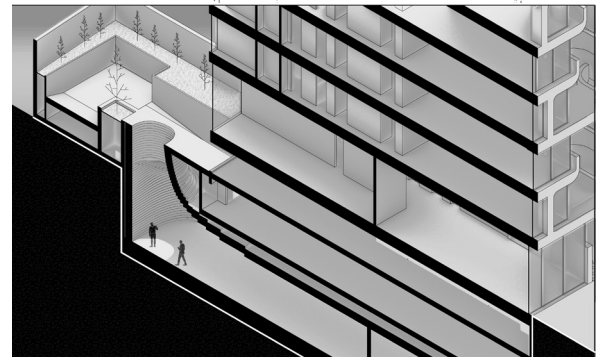
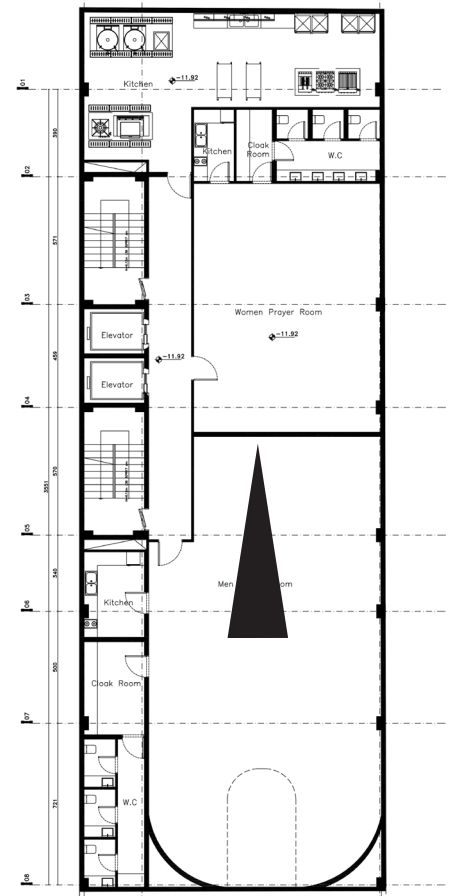








## Prayer Hall VIEW



# Narenjestan

tarh 2 tarh  
Competition

Maka Group  
Tehran / Iran  
winter - 2025