

┌ ARMINARMAN STUDIO ┐  
SINCE 2019

2019

TILL

2024



# ABOUT US

## INTRODUCTION

ARMINARMAN Studio was established by Armin Rahimi and Arman Rahimi in 2019 and provides complete architectural services for both public and private sectors. They have completed numerous projects and have been honored in national competitions. Eco-friendly design and research of architectural ideas are key features of this collection, which can be seen in the spaces designed in various projects.



**SAHRA RESIDENCE**

# CONTENT



1



2



3



4



5



6



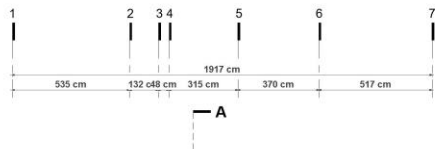
**ALTERNATIVE 01**

جدول مساحت کلی مسابقه معررا									
طبقه	کاربری			مسکونی		راه پله + آسانسور/لابی	پارکینگ		مساحت کل طبقه
	واحد	مساحت	مساحت واحد ها	مساحت	مساحت واحد ها		تعداد	واحد	مساحت
نیززمین ۱-	-	-	-	-	-	-	14	00.00	384.11
همکف	-	-	-	-	-	-	4	12	288
اول	2	291.6	واحد شرقی : 154.5 واحد غربی : 137.1	28.3	-	-	-	-	319.85
دوم	2	291.7	واحد شرقی : 156.8 واحد غربی : 134.9	28.3	-	-	-	-	319.88
سوم	2	291.6	واحد شرقی : 154.5 واحد غربی : 137.1	28.3	-	-	-	-	319.85
چهارم	2	291.7	واحد شرقی : 154.5 واحد غربی : 137.1	28.3	-	-	-	-	319.88
پنجم	1	298	واحد مسکونی : 298	21.8	-	-	-	-	319.85
ششم	1	298	واحد مسکونی : 298	21.8	-	-	-	-	319.88
جمع	مجموع مساحت مسکونی			-	مجموع تعداد پارکینگ		مجموع مساحت انبار		مساحت کل مجموعه
	10	1762.9	-	-	18	12	20.06	2591.3	

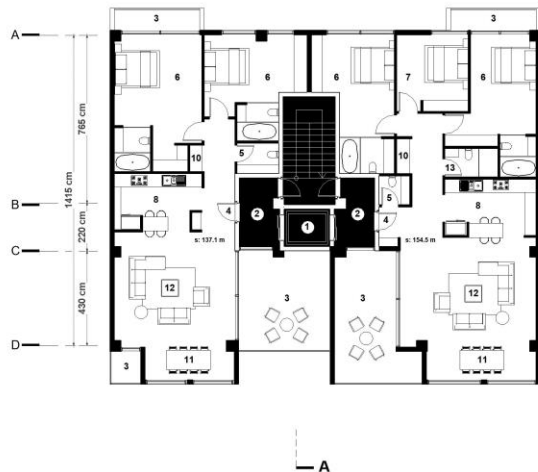
دیوارهای مشترک بین فضای مسکونی و مشاعات(راه پله،آسانسور و لابی) جزء مساحت مسکونی محاسبه می شود

نیازی به پر کردن خانه های با علامت (-) نیست

لطفاً پلی لاین مساحت کل طبقه و واحدهای مسکونی در فایل اتوکد ترسیم شود



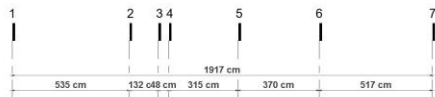
- 1 Elevator
- 2 Lobby
- 3 Balcony
- 4 Entrance
- 5 W/C
- 6 Master Room
- 7 Bed Room
- 8 Kitchen
- 9 Back kitchen
- 10 Laundry
- 11 Dining Room
- 12 Living Room
- 13 Bath Room



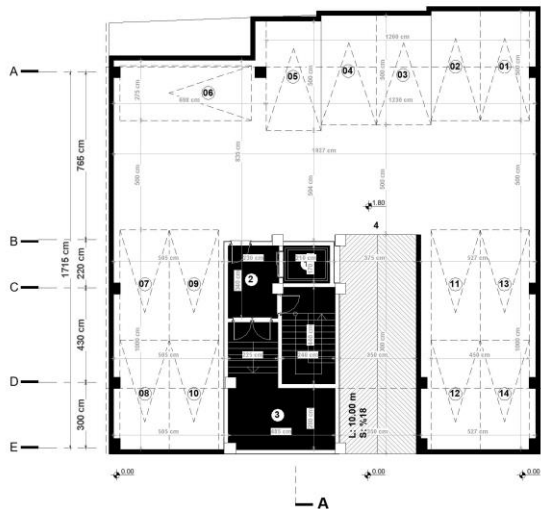
LEVEL 01,03



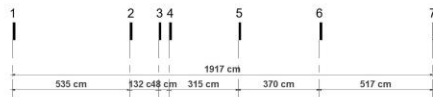




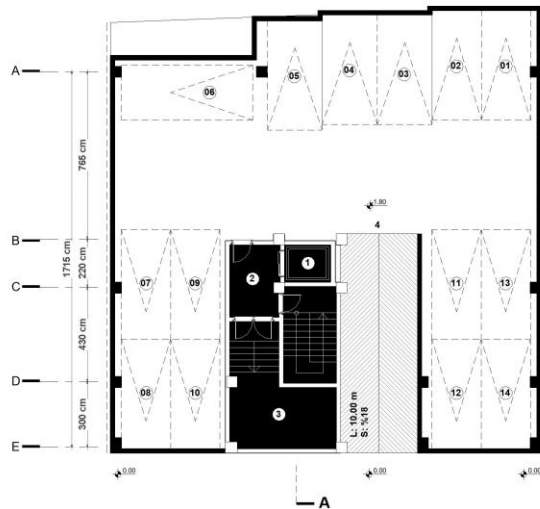
A



LEVEL -01

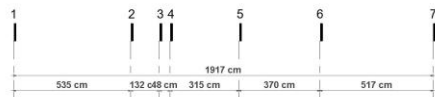


A

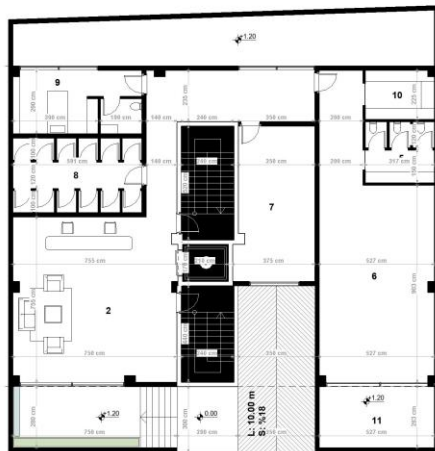


LEVEL -01



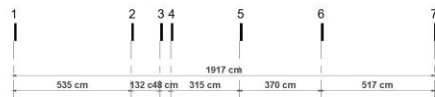


A

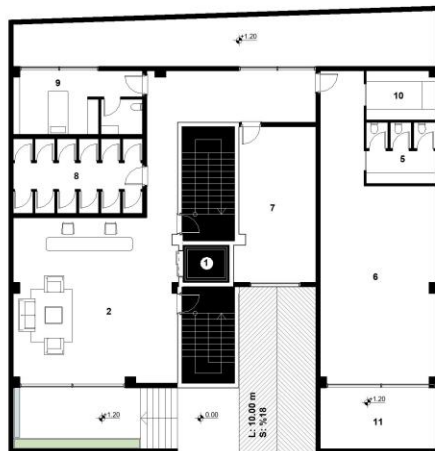


A

LEVEL GF



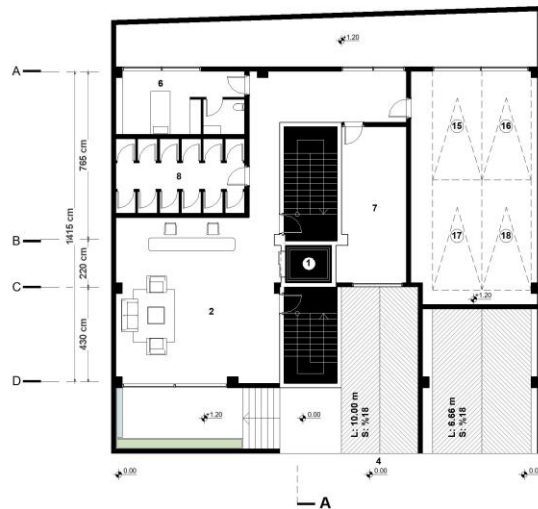
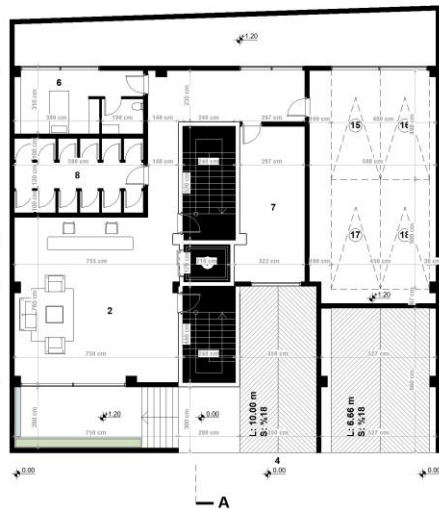
A

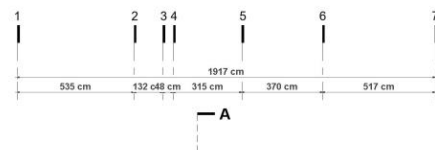
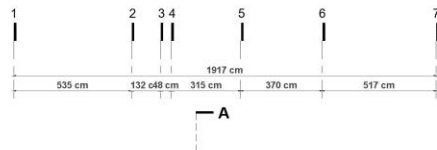


A

LEVEL GF



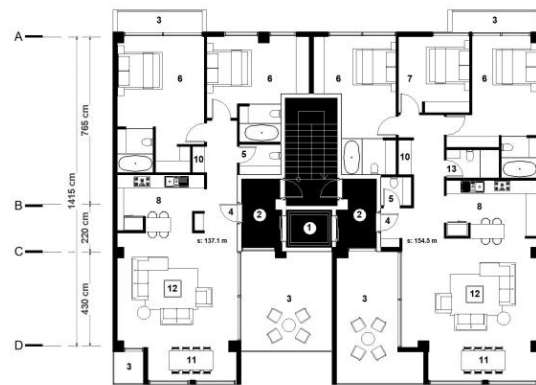




- 1 Elevator
- 2 Lobby
- 3 Balcony
- 4 Entrance
- 5 WC
- 6 Master Room
- 7 Bed Room
- 8 Kitchen
- 9 Back kitchen
- 10 Laundry
- 11 Dining Room
- 12 Living Room
- 13 Bath Room



- 1 Elevator
- 2 Lobby
- 3 Balcony
- 4 Entrance
- 5 WC
- 6 Master Room
- 7 Bed Room
- 8 Kitchen
- 9 Back kitchen
- 10 Laundry
- 11 Dining Room
- 12 Living Room
- 13 Bath Room



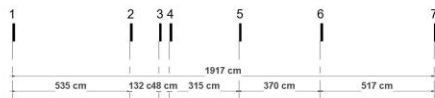
LEVEL 01,03



LEVEL 01,03





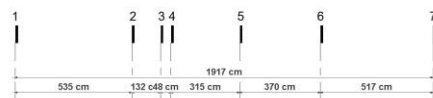


A

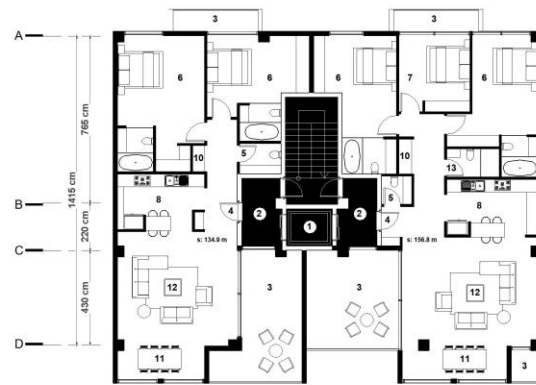


A

LEVEL 02,04



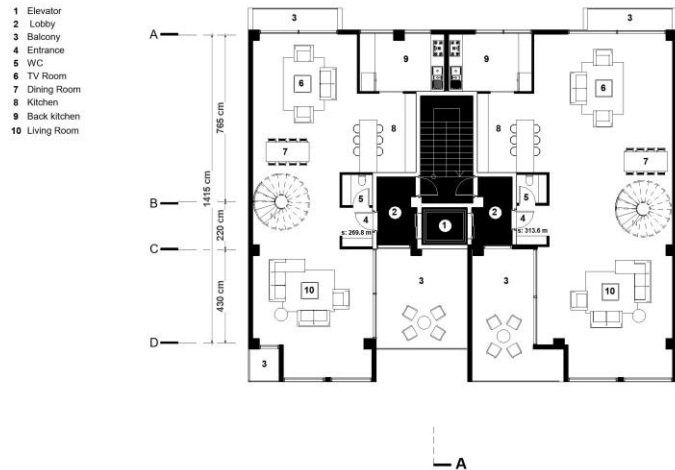
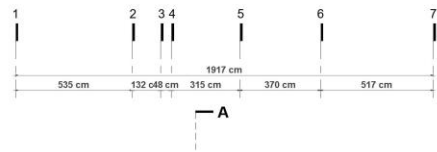
A



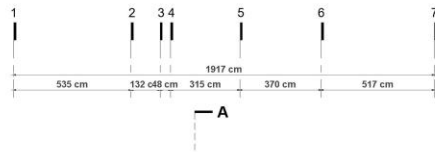
A

LEVEL 02,04





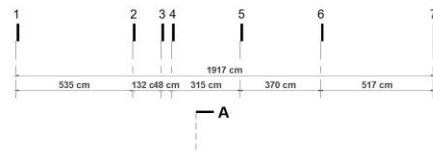
**LEVEL 05**



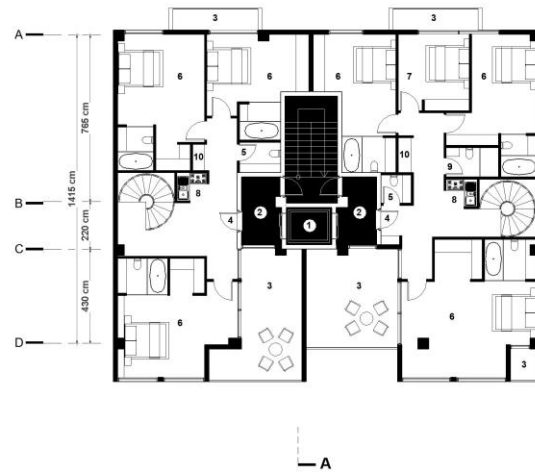
- 1 Elevator
- 2 Lobby
- 3 Balcony
- 4 Entrance
- 5 WC
- 6 Master Room
- 7 Bed Room
- 8 Kitchenette
- 9 Bath Room
- 10 Laundry



LEVEL 06

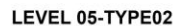
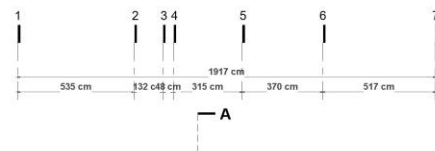


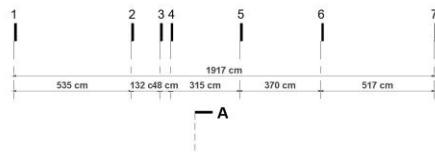
- 1 Elevator
- 2 Lobby
- 3 Balcony
- 4 Entrance
- 5 WC
- 6 Master Room
- 7 Bed Room
- 8 Kitchenette
- 9 Bath Room
- 10 Laundry



LEVEL 06



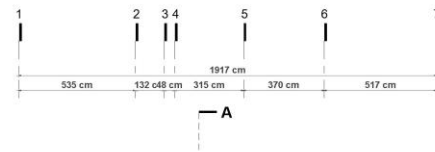




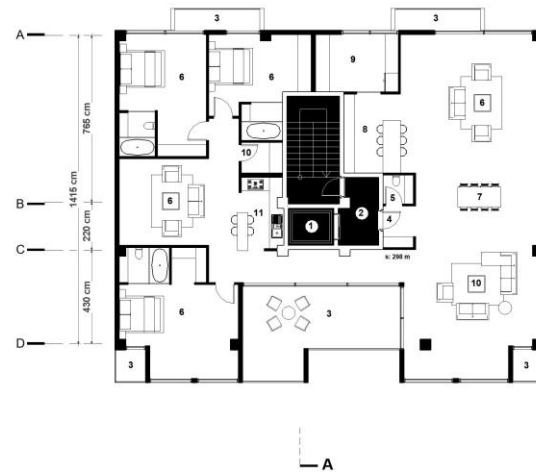
- 1 Elevator
- 2 Lobby
- 3 Balcony
- 4 Entrance
- 5 WC
- 6 TV Room
- 7 Dining Room
- 8 Kitchen
- 9 Back kitchen
- 10 Living Room
- 11 Kitchenette



LEVEL 06-TYPE02

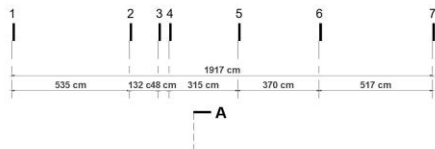


- 1 Elevator
- 2 Lobby
- 3 Balcony
- 4 Entrance
- 5 WC
- 6 TV Room
- 7 Dining Room
- 8 Kitchen
- 9 Back kitchen
- 10 Living Room
- 11 Kitchenette



LEVEL 06-TYPE02



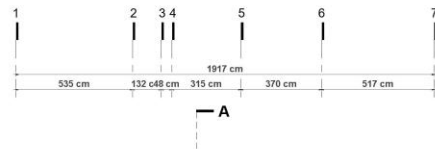


- 1 Elevator
- 2 Lobby
- 3 Fire place
- 4 Entrance
- 5 WC
- 6 Jacuzzi
- 7 Party zone
- 8 Kitchenette
- 9 Sun lounge
- 10 Fountain

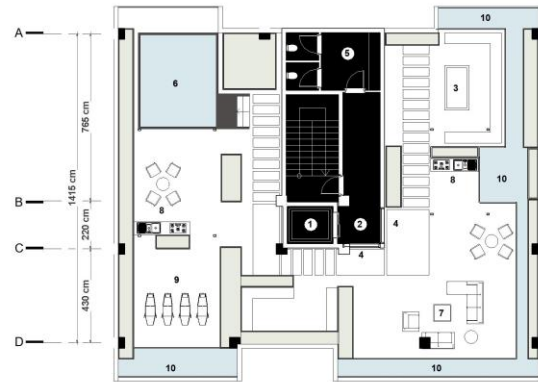


A

LEVEL RF



- 1 Elevator
- 2 Lobby
- 3 Fire place
- 4 Entrance
- 5 WC
- 6 Jacuzzi
- 7 Party zone
- 8 Kitchenette
- 9 Sun lounge
- 10 Fountain



A

LEVEL RF















# **ALTERNATIVE 02**

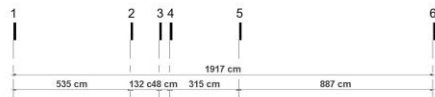


جدول مساحت کلی مسابقه معمار									
طبقه	واحد	مساحت	مسکونی		مساحت واحدها	مساحت	راه پله + آسانسورها	پارکینگ	
								واحد	انبار
زمین - ۱	-	-	-	-	-	-	-	14	00.00
همکف	-	-	-	-	-	-	-	4	1288
اول	2	297.2	واحد شرقی : 162.3 واحد غربی : 134.9	23.6	-	-	-	-	-
دوم	2	290	واحد شرقی : 155 واحد غربی : 135	23.6	-	-	-	-	-
سوم	2	288.2	واحد شرقی : 160.6 واحد غربی : 127.6	23.6	-	-	-	-	-
چهارم	2	290	واحد شرقی : 155 واحد غربی : 135	23.6	-	-	-	-	-
پنجم	1	315.6	واحد مسکونی : 315.6	23.6	-	-	-	-	-
ششم	1	262.6	واحد مسکونی : 262.6	23.6	-	-	-	-	-
جمع	10	مساحت مسکونی مجموع		-	مجموع تعداد		مجموع مساحت		مساحت کل مجموعه
		1743.6		-	18		24		2558.11

دیوارهای مشترک بین فضای مسکونی و مشاعات (راه پله، آسانسور و لابی) جزء مساحت مسکونی محاسبه می شود

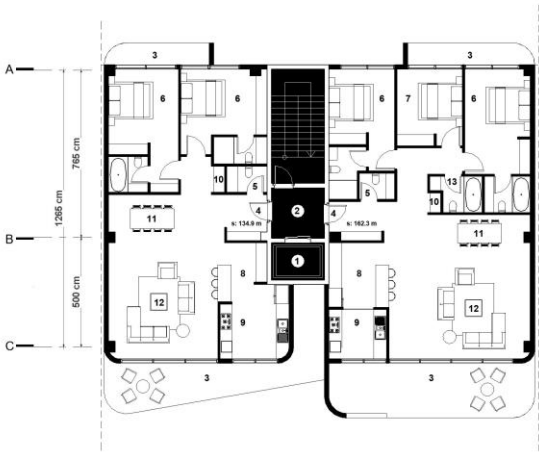
نیازی به پر کردن خانه های با علامت (-) نیست

لطفاً پلی لاین مساحت کل طبقه و واحدهای مسکونی در فایل اتوکد ترسیم شود



A

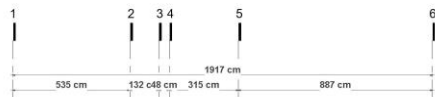
- 1 Elevator
- 2 Lobby
- 3 Balcony
- 4 Entrance
- 5 W/C
- 6 Master Room
- 7 Bed Room
- 8 Kitchen
- 9 Back kitchen
- 10 Laundry
- 11 Dining Room
- 12 Living Room
- 13 Bath Room



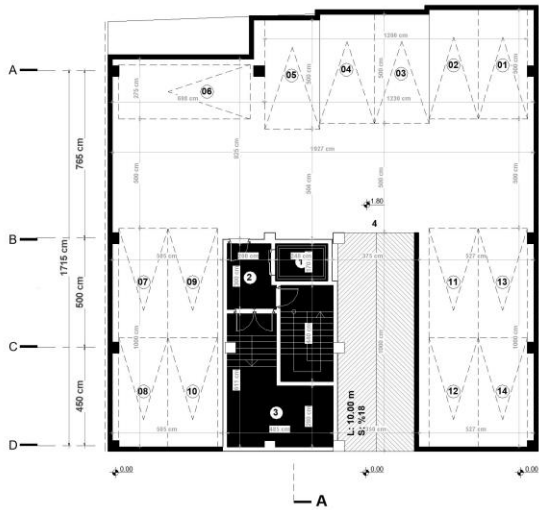
A

LEVEL 01



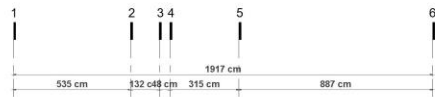


A

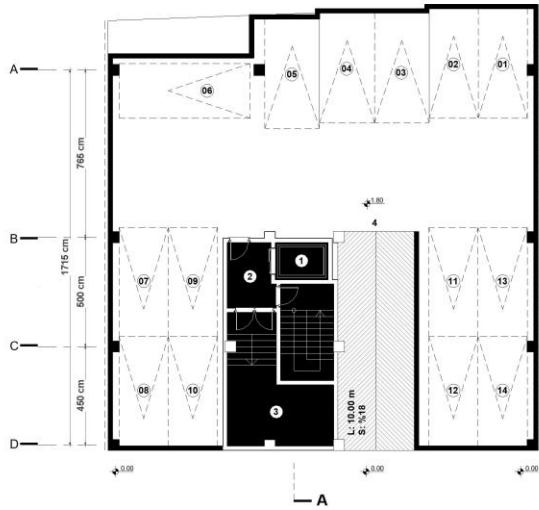


- 1 Elevator
- 2 Lobby
- 3 Mechanical Room
- 4 Car entrance

LEVEL -01



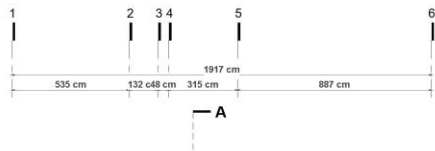
A



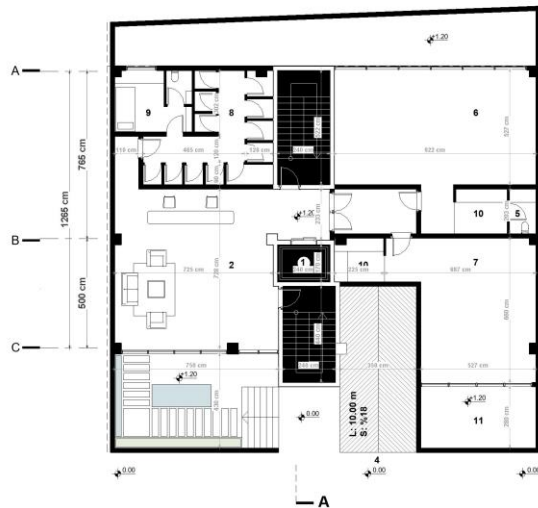
- 1 Elevator
- 2 Lobby
- 3 Mechanical Room
- 4 Car entrance

LEVEL -01

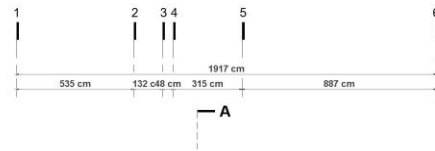




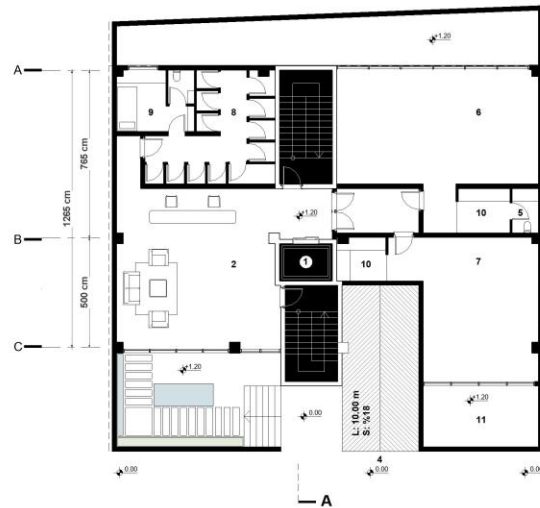
- 1 Elevator
- 2 Lobby
- 3 Mechanical Room
- 4 Car entrance
- 5 WC
- 6 Party Room
- 7 GYM
- 8 Store
- 9 Caretaker
- 10 Walk in closet
- 11 Terrace



LEVEL GF



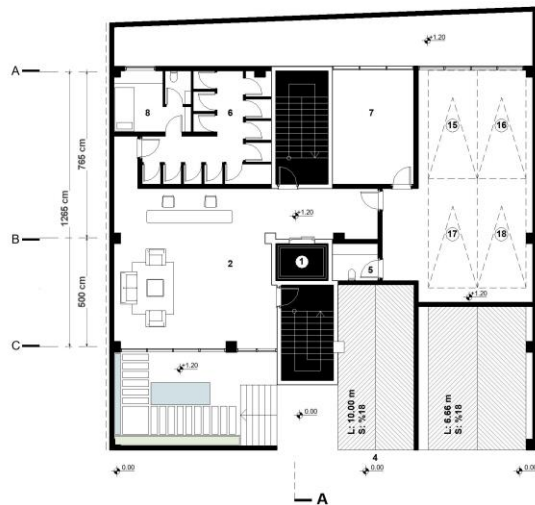
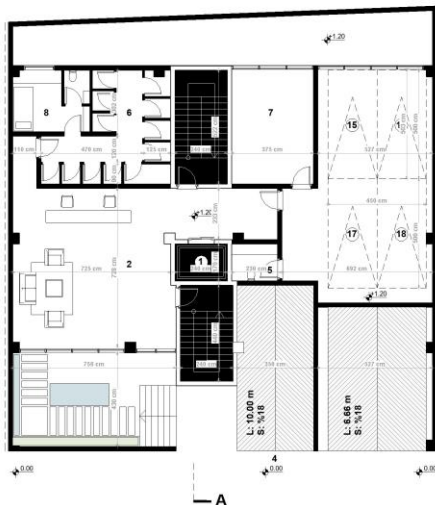
- 1 Elevator
- 2 Lobby
- 3 Mechanical Room
- 4 Car entrance
- 5 WC
- 6 Party Room
- 7 GYM
- 8 Store
- 9 Caretaker
- 10 Walk in closet
- 11 Terrace

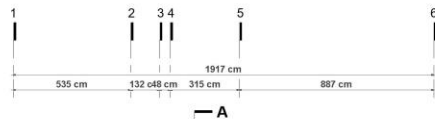


LEVEL GF

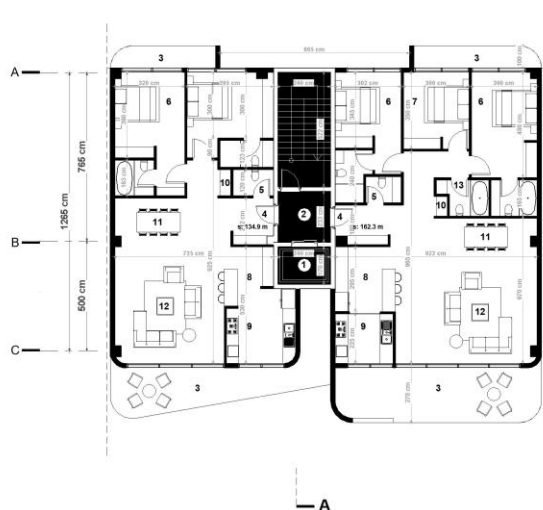






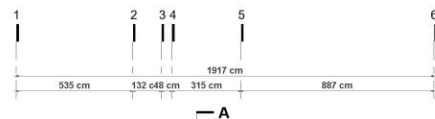


A

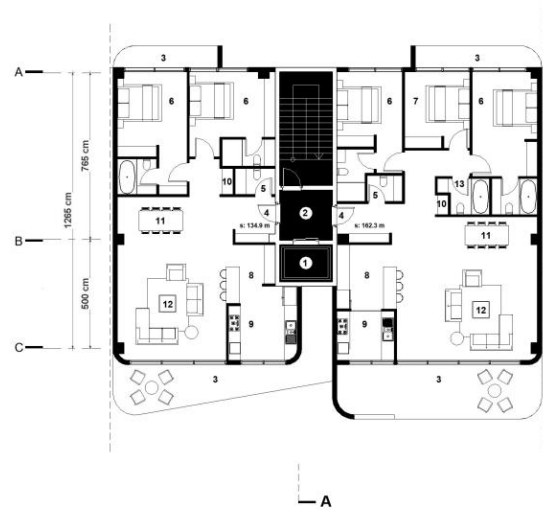


A

LEVEL 01



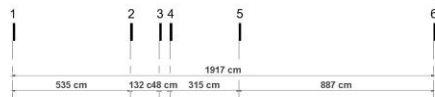
A



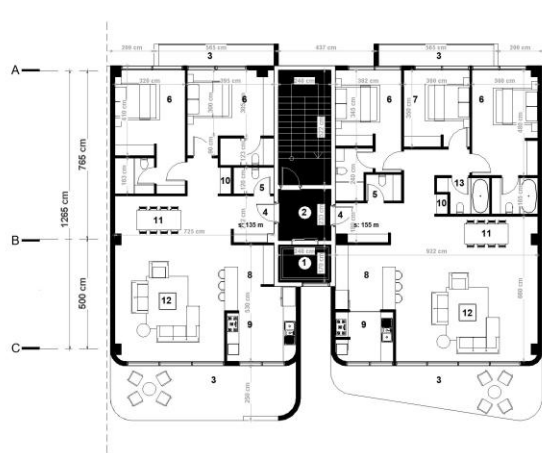
A

LEVEL 01



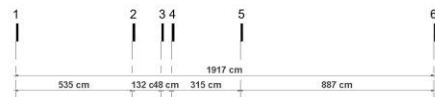


A

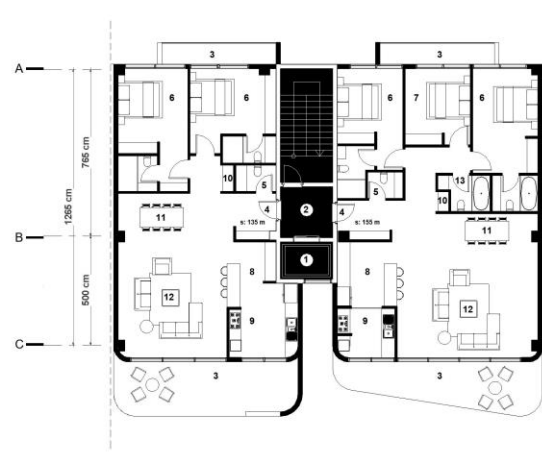


A

LEVEL 02,04



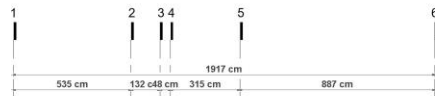
A



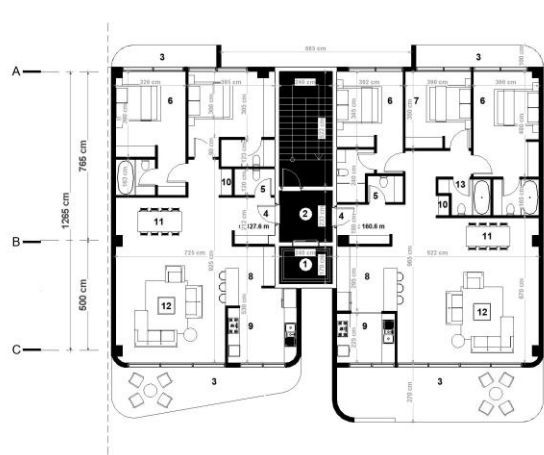
A

LEVEL 02,04



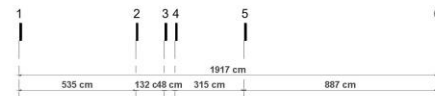


A

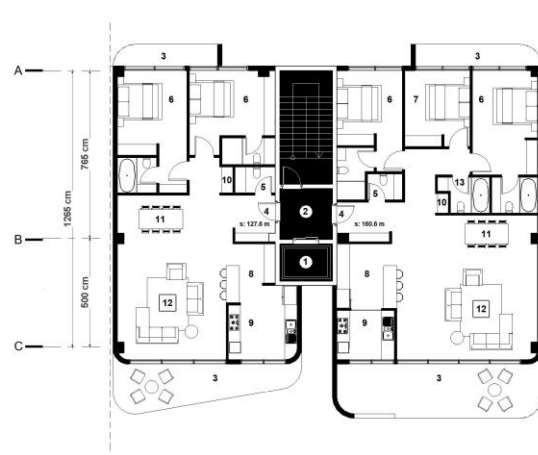


A

LEVEL 03



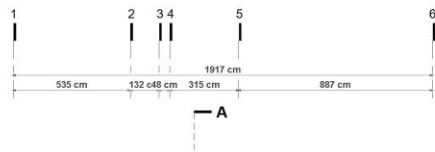
A



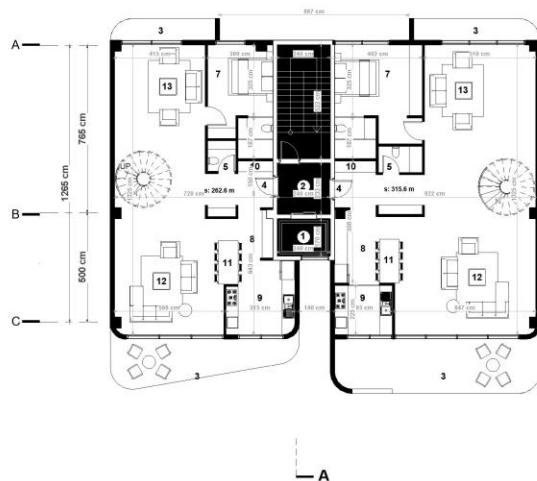
A

LEVEL 03

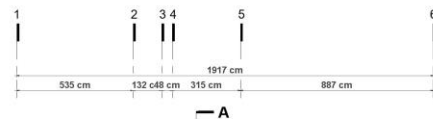




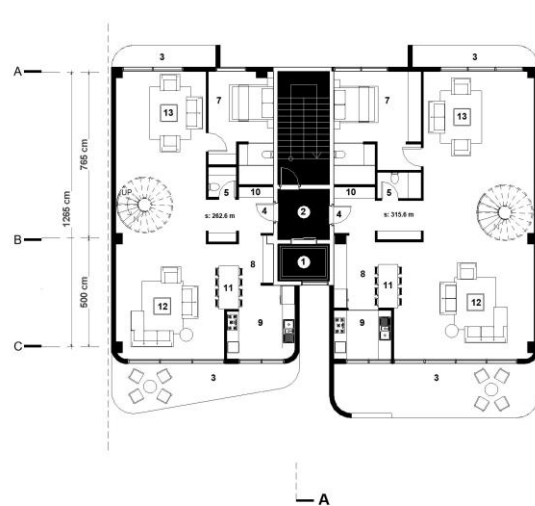
- 1 Elevator
- 2 Lobby
- 3 Balcony
- 4 Entrance
- 5 WC
- 6 Master Room
- 7 Guest Room
- 8 Kitchen
- 9 Back kitchen
- 10 Laundry
- 11 Dining Room
- 12 Living Room
- 13 TV Room



LEVEL 05

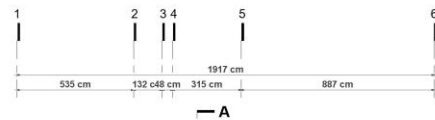
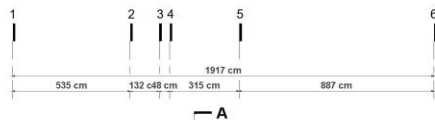


- 1 Elevator
- 2 Lobby
- 3 Balcony
- 4 Entrance
- 5 WC
- 6 Master Room
- 7 Guest Room
- 8 Kitchen
- 9 Back kitchen
- 10 Laundry
- 11 Dining Room
- 12 Living Room
- 13 TV Room



LEVEL 05

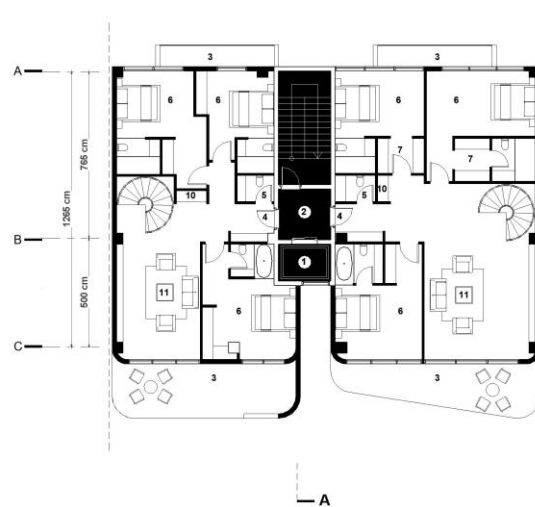




- 1 Elevator
- 2 Lobby
- 3 Balcony
- 4 Entrance
- 5 WC
- 6 Master Room
- 7 Walk in closet
- 8 Kitchenette
- 9 Back kitchen
- 10 Laundry
- 11 TV Room



- 1 Elevator
- 2 Lobby
- 3 Balcony
- 4 Entrance
- 5 WC
- 6 Master Room
- 7 Walk in closet
- 8 Kitchenette
- 9 Back kitchen
- 10 Laundry
- 11 TV Room

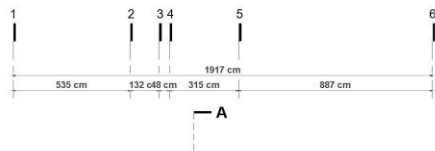


LEVEL 06



LEVEL 06

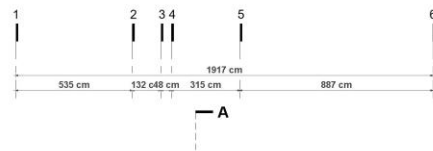




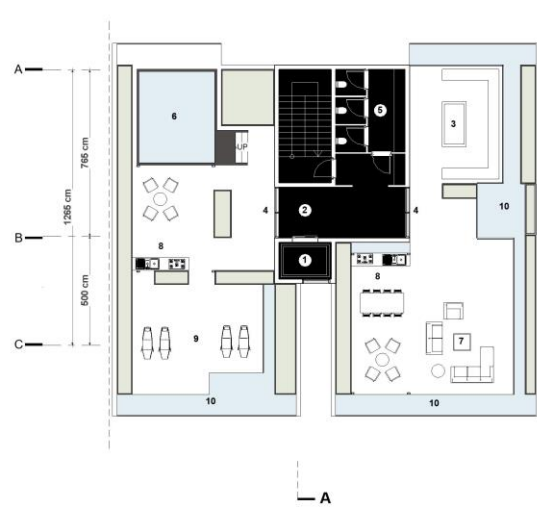
- 1 Elevator
- 2 Lobby
- 3 Fire place
- 4 Entrance
- 5 WC
- 6 Jacuzzi
- 7 Party zone
- 8 Kitchenette
- 9 Sun lounge
- 10 Fountain



LEVEL RF



- 1 Elevator
- 2 Lobby
- 3 Fire place
- 4 Entrance
- 5 WC
- 6 Jacuzzi
- 7 Party zone
- 8 Kitchenette
- 9 Sun lounge
- 10 Fountain



LEVEL RF



















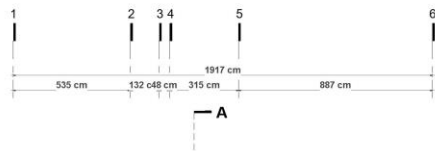
**ALTERNATIVE 03**

جدول مساحت کلی مسابقه معررا									
طبقه	کاربری			مسکونی		راه پله + آسانسور/لابی		پارکینگ	
	واحد	مساحت	مساحت واحد/م	مساحت	مساحت واحد/م	مساحت	کد واحد	واحد	مساحت
نیززمین ۱-	-	-	-	-	-	-	14	00.00	384.11
همکف	-	-	-	-	-	-	4	12	288
اول	2	296.2	واحد شرقی : 161.3 واحد غربی : 134.9	23.6	-	-	-	-	320
دوم	2	282.3	واحد شرقی : 153.9 واحد غربی : 128.4	23.6	-	-	-	-	306.2
سوم	2	296.2	واحد شرقی : 161.3 واحد غربی : 134.9	23.6	-	-	-	-	320
چهارم	2	282.3	واحد شرقی : 153.9 واحد غربی : 128.4	23.6	-	-	-	-	306.2
پنجم	1	322.6	واحد مسکونی : 322.6	23.6	-	-	-	-	320
ششم	1	269.8	واحد مسکونی : 269.8	23.6	-	-	-	-	306.2
جمع	مساحت مسکونی			-	مجموع تعداد		مجموع مساحت		مساحت کل مجموعه
	10	1749.4	-	-	18	12	24	2550.71	

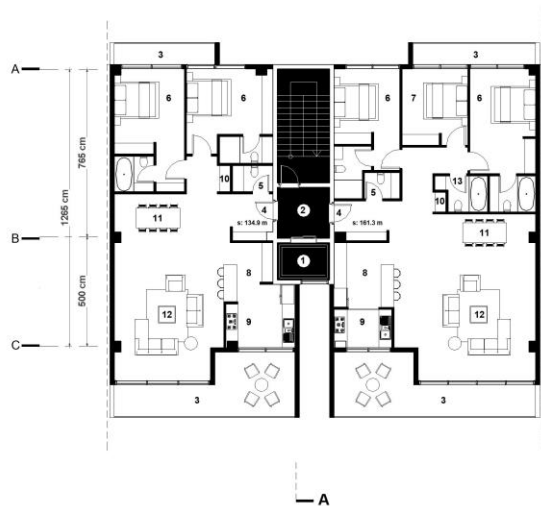
دیوارهای مشترک بین فضای مسکونی و مشاعات(راه پله، آسانسور و لابی) جزء مساحت مسکونی محاسبه می شود

نیازی به پر کردن خانه های با علامت (-) نیست

لطفاً پلی لاین مساحت کل طبقه و واحدهای مسکونی در فایل اتوکد ترسیم شود



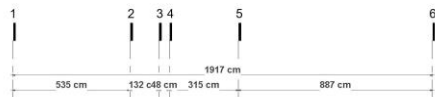
- 1 Elevator
- 2 Lobby
- 3 Balcony
- 4 Entrance
- 5 WC
- 6 Master Room
- 7 Bed Room
- 8 Kitchen
- 9 Back kitchen
- 10 Laundry
- 11 Dining Room
- 12 Living Room
- 13 Bath Room



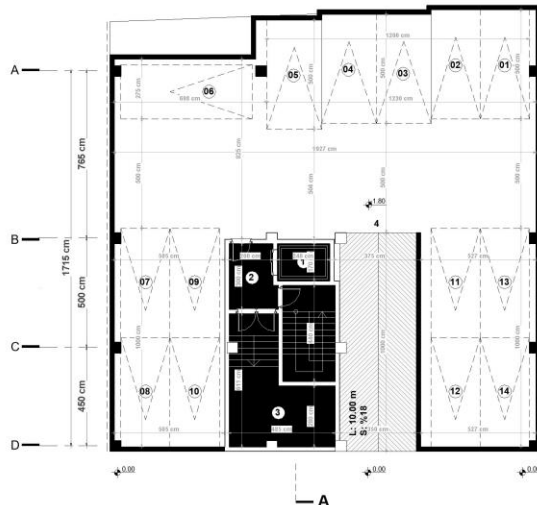
LEVEL 01,03





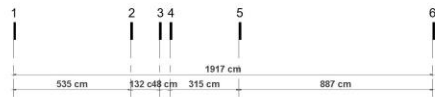


A

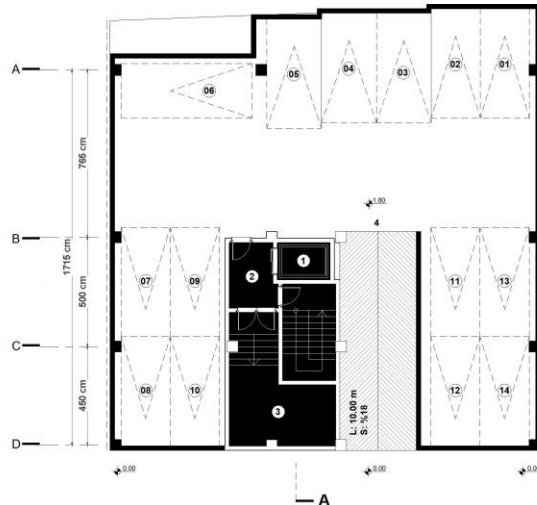


- 1 Elevator
- 2 Lobby
- 3 Mechanical Room
- 4 Car entrance

LEVEL -01



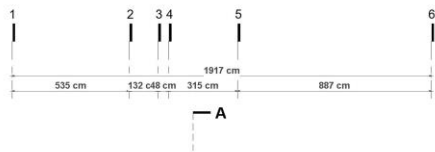
A



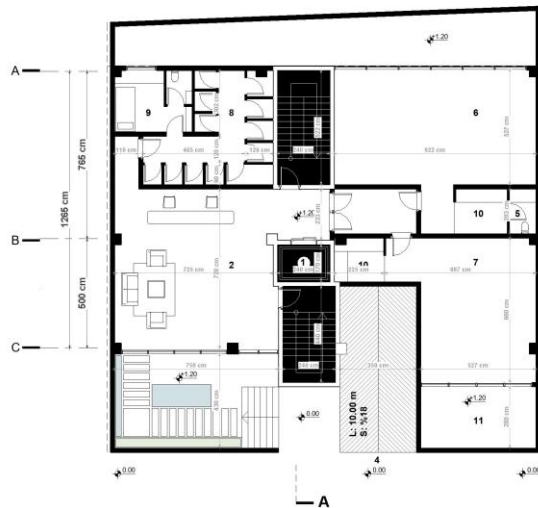
- 1 Elevator
- 2 Lobby
- 3 Mechanical Room
- 4 Car entrance

LEVEL -01

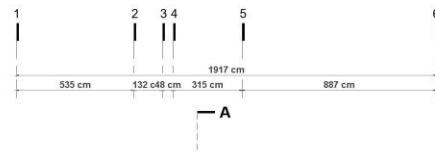




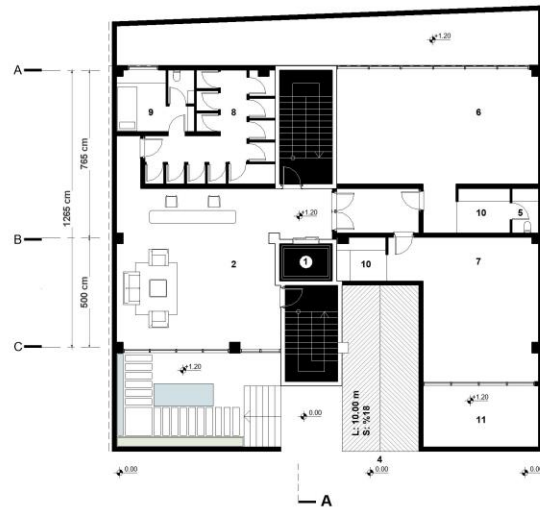
- 1 Elevator
- 2 Lobby
- 3 Mechanical Room
- 4 Car entrance
- 5 WC
- 6 Party Room
- 7 GYM
- 8 Store
- 9 Caretaker
- 10 Walk in closet
- 11 Terrace



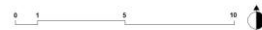
LEVEL GF

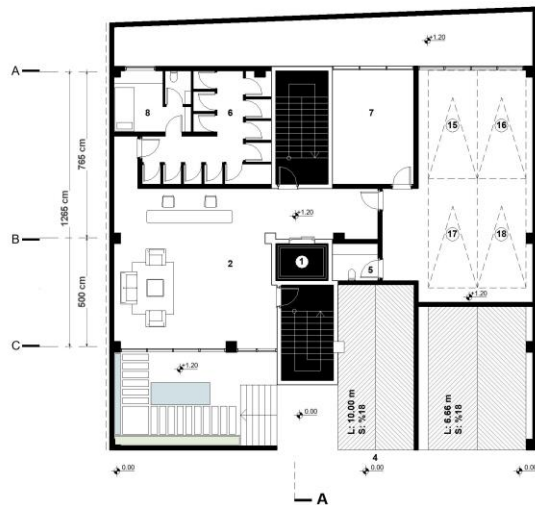
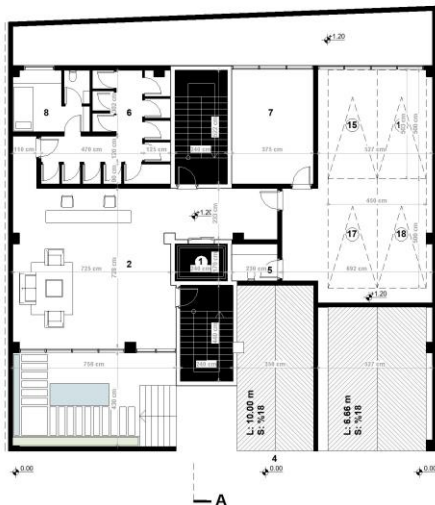


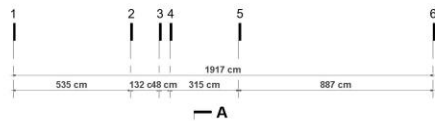
- 1 Elevator
- 2 Lobby
- 3 Mechanical Room
- 4 Car entrance
- 5 WC
- 6 Party Room
- 7 GYM
- 8 Store
- 9 Caretaker
- 10 Walk in closet
- 11 Terrace



LEVEL GF





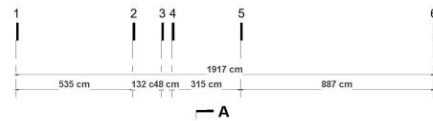


A

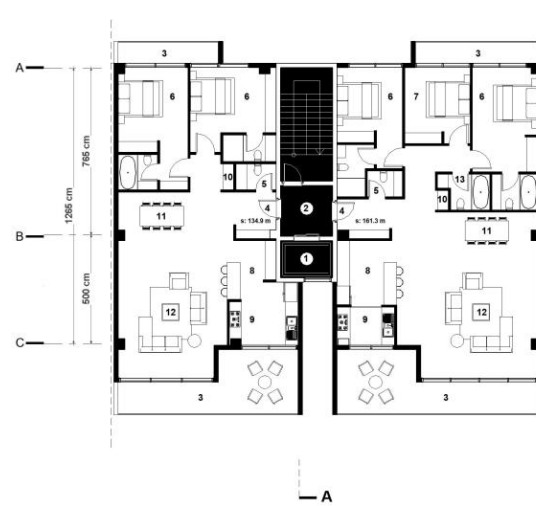


A

LEVEL 01,03



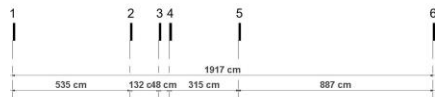
A



A

LEVEL 01,03



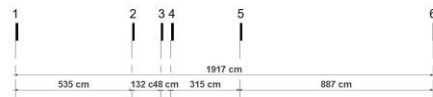


A

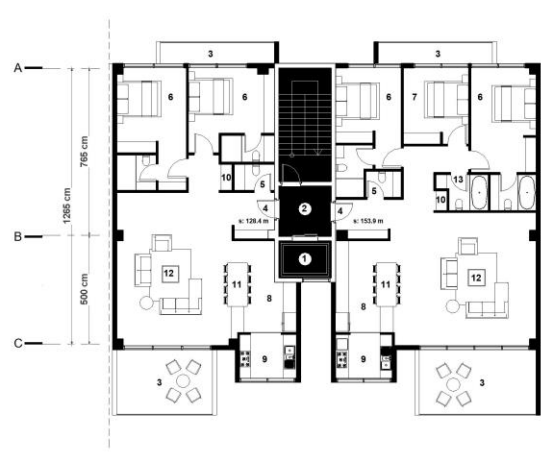


A

LEVEL 02,04



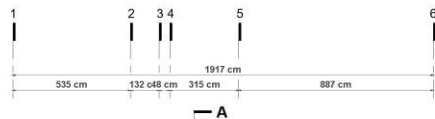
A



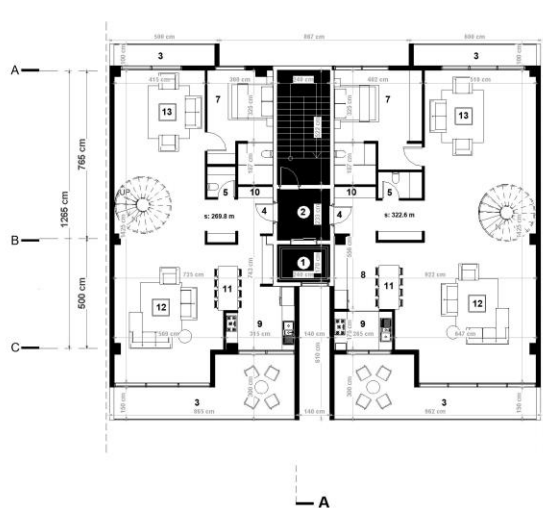
A

LEVEL 02,04

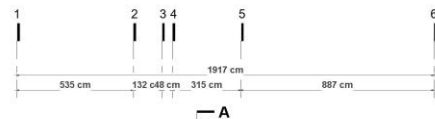




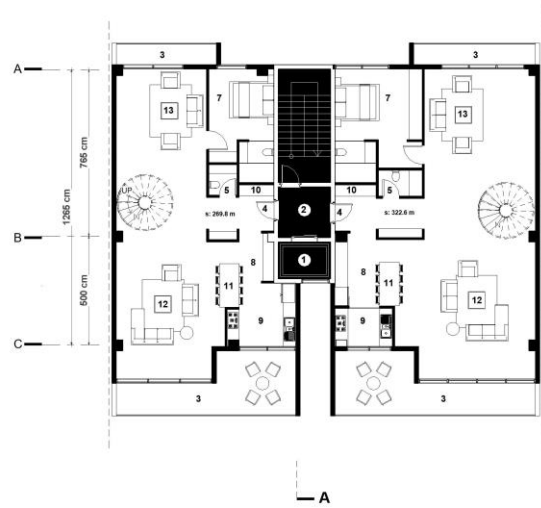
- 1 Elevator
- 2 Lobby
- 3 Balcony
- 4 Entrance
- 5 WC
- 6 Master Room
- 7 Guest Room
- 8 Kitchen
- 9 Back kitchen
- 10 Laundry
- 11 Dining Room
- 12 Living Room
- 13 TV Room



LEVEL 05

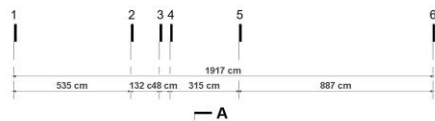


- 1 Elevator
- 2 Lobby
- 3 Balcony
- 4 Entrance
- 5 WC
- 6 Master Room
- 7 Guest Room
- 8 Kitchen
- 9 Back kitchen
- 10 Laundry
- 11 Dining Room
- 12 Living Room
- 13 TV Room

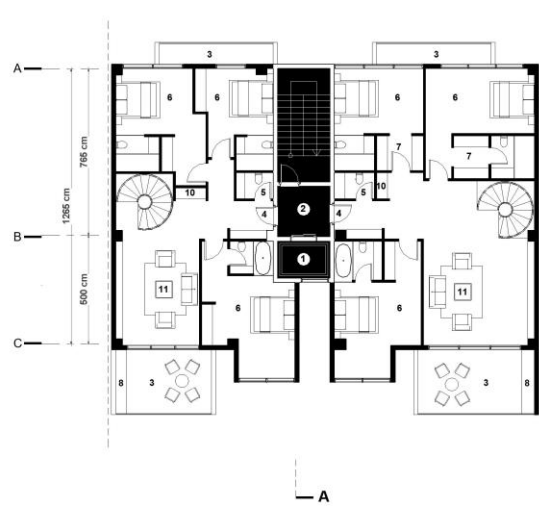
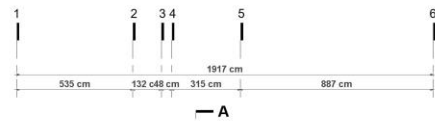


LEVEL 05



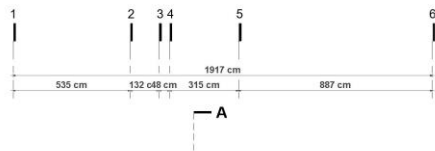


LEVEL 06

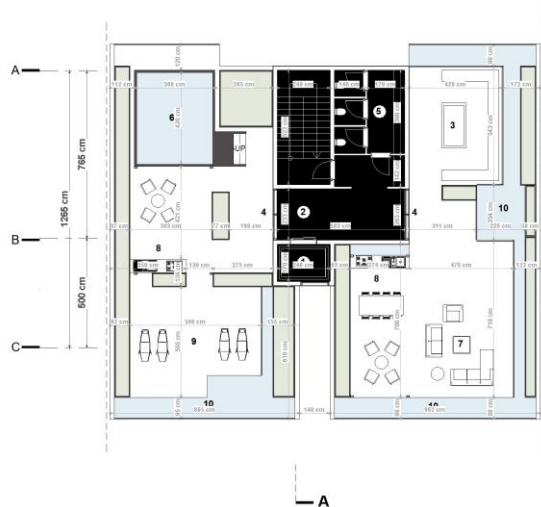


LEVEL 06

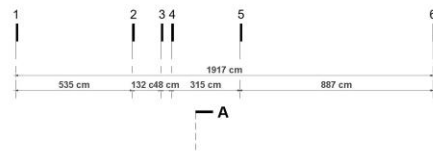




- 1 Elevator
- 2 Lobby
- 3 Fire place
- 4 Entrance
- 5 WC
- 6 Jacuzzi
- 7 Party zone
- 8 Kitchenette
- 9 Sun lounge
- 10 Fountain



LEVEL RF



- 1 Elevator
- 2 Lobby
- 3 Fire place
- 4 Entrance
- 5 WC
- 6 Jacuzzi
- 7 Party zone
- 8 Kitchenette
- 9 Sun lounge
- 10 Fountain



LEVEL RF



















**ALTERNATIVE 04**

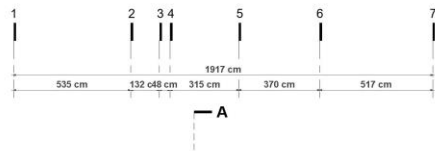
جدول مساحت کلی مسابقه معمار									
طبقه	کاربری			مسکونی		راه پله + آسانسورها	پارکینگ		مساحت کل طبقه
	واحد	مساحت	مساحت واحدها	مساحت	مساحت واحدها		کد واحد	واحد	مساحت
نیززمین ۱-	-	-	-	-	-	-	14	00.00	384.11
همکف	-	-	-	-	-	-	4	12	288
اول	2	283.9	واحد شرقی : 151.1 واحد غربی : 132.8	28.3	-	-	-	-	319.85
دوم	2	285.2	واحد شرقی : 152.4 واحد غربی : 132.8	28.3	-	-	-	-	319.88
سوم	2	286.7	واحد شرقی : 158.5 واحد غربی : 128.2	28.3	-	-	-	-	319.85
چهارم	2	285.2	واحد شرقی : 152.4 واحد غربی : 132.8	28.3	-	-	-	-	319.88
پنجم	1	310.9	واحد مسکونی : 310.9	21.8	-	-	-	-	319.85
ششم	1	257	واحد مسکونی : 257	21.8	-	-	-	-	319.88
جمع	مجموع مساحت مسکونی			-	مجموع تعداد پارکینگ		مجموع مساحت انبار		مساحت کل مجموعه
	10	1708.9	-	-	18	12	20.06	-	2591.3

دیوارهای مشترک بین فضای مسکونی و مشاعات(راه پله، آسانسور و لابی) جزء مساحت مسکونی محاسبه می شود

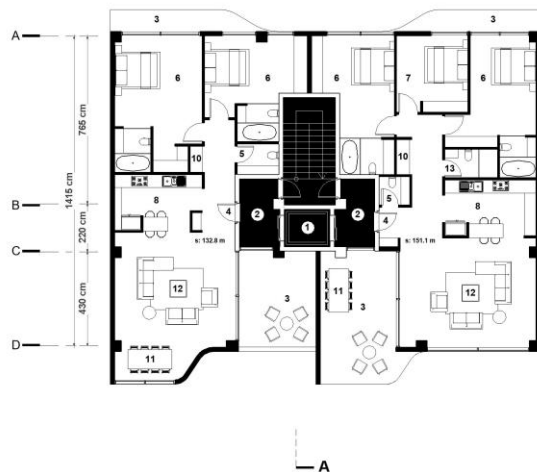
نیازی به پر کردن خانه های با علامت (-) نیست

لطفاً پلی لاین مساحت کل طبقه و واحدهای مسکونی در فایل اتوکد ترسیم شود



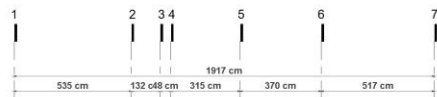


- 1 Elevator
- 2 Lobby
- 3 Balcony
- 4 Entrance
- 5 W/C
- 6 Master Room
- 7 Bed Room
- 8 Kitchen
- 9 Back kitchen
- 10 Laundry
- 11 Dining Room
- 12 Living Room
- 13 Bath Room

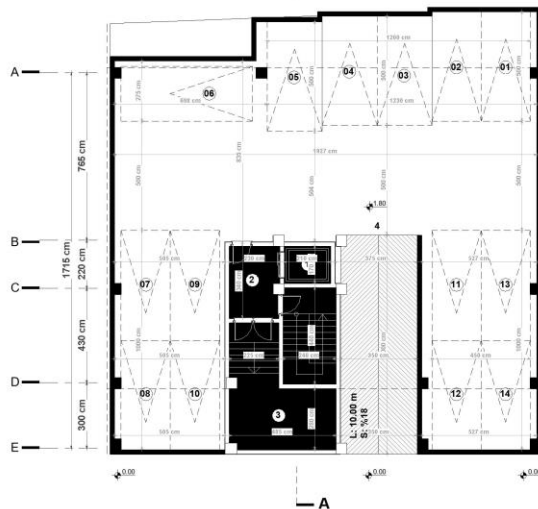


LEVEL 01



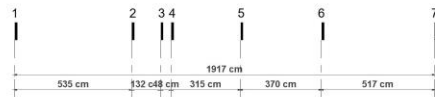


A

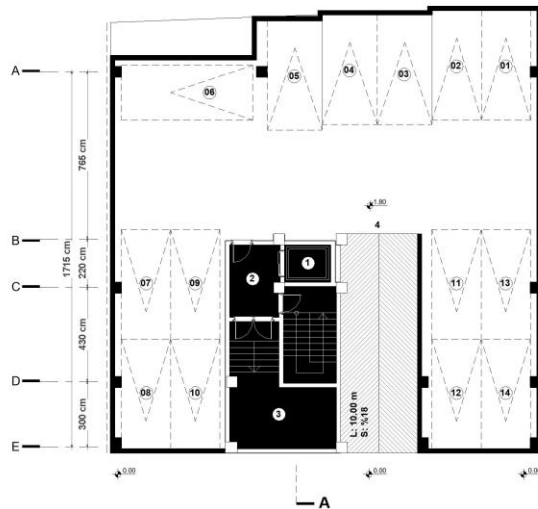


- 1 Elevator
- 2 Lobby
- 3 Mechanical Room
- 4 Car entrance

LEVEL -01



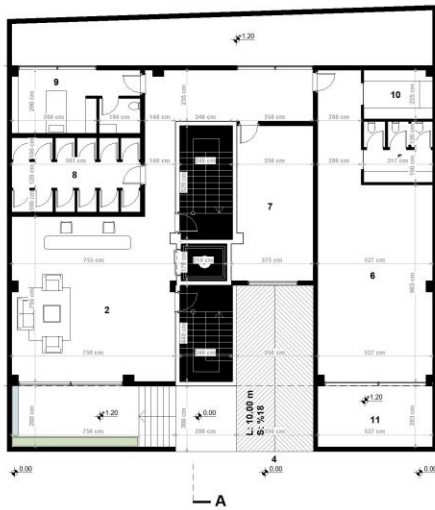
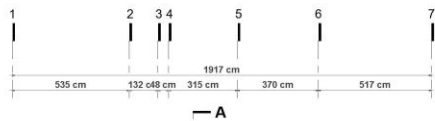
A



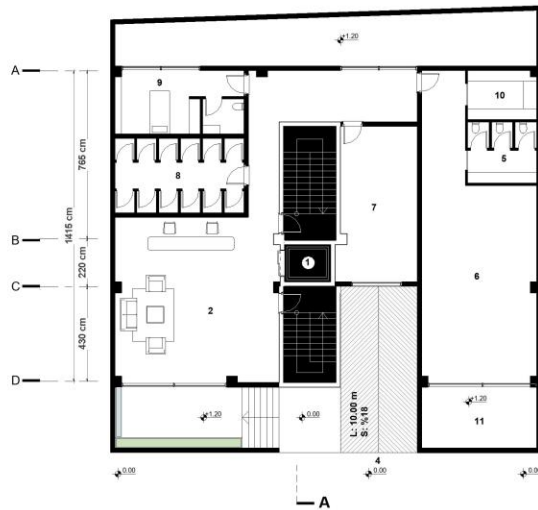
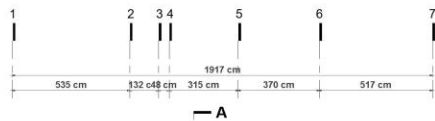
- 1 Elevator
- 2 Lobby
- 3 Mechanical Room
- 4 Car entrance

LEVEL -01



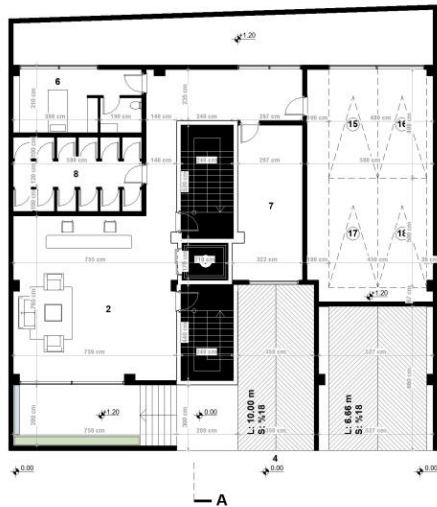
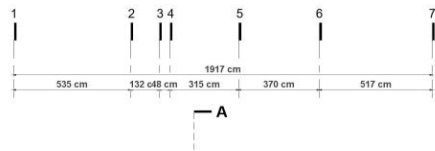


LEVEL GF

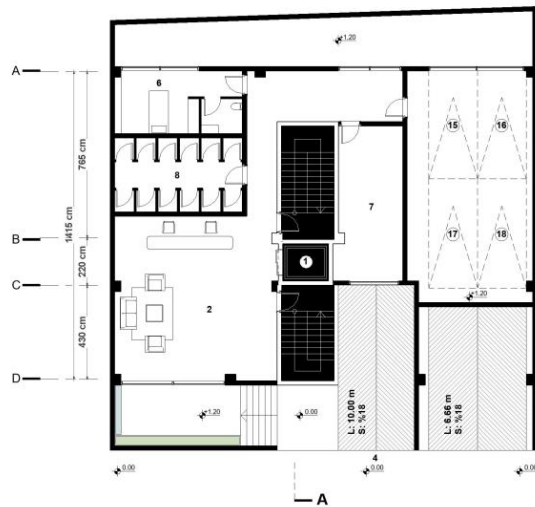
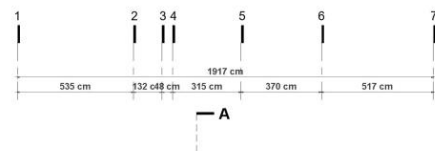


LEVEL GF



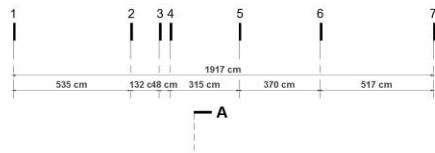


LEVEL GF-TYPE02

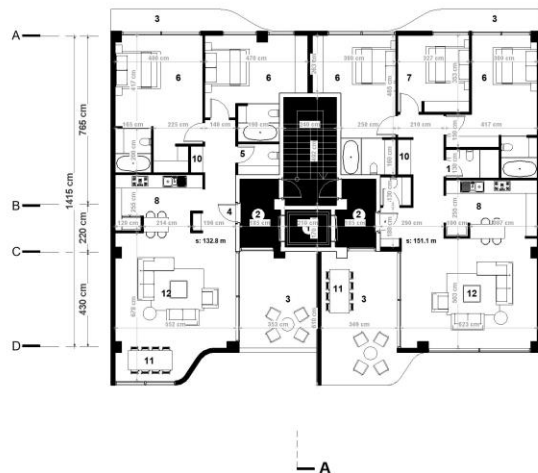


LEVEL GF-TYPE02

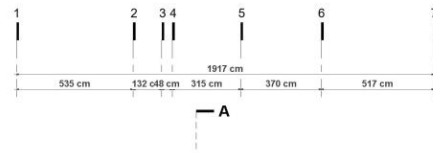




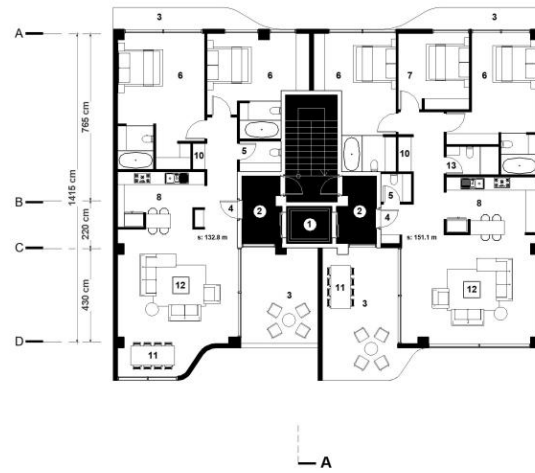
- 1 Elevator
- 2 Lobby
- 3 Balcony
- 4 Entrance
- 5 WC
- 6 Master Room
- 7 Bed Room
- 8 Kitchen
- 9 Back kitchen
- 10 Laundry
- 11 Dining Room
- 12 Living Room
- 13 Bath Room



LEVEL 01

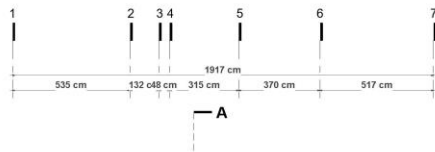


- 1 Elevator
- 2 Lobby
- 3 Balcony
- 4 Entrance
- 5 WC
- 6 Master Room
- 7 Bed Room
- 8 Kitchen
- 9 Back kitchen
- 10 Laundry
- 11 Dining Room
- 12 Living Room
- 13 Bath Room

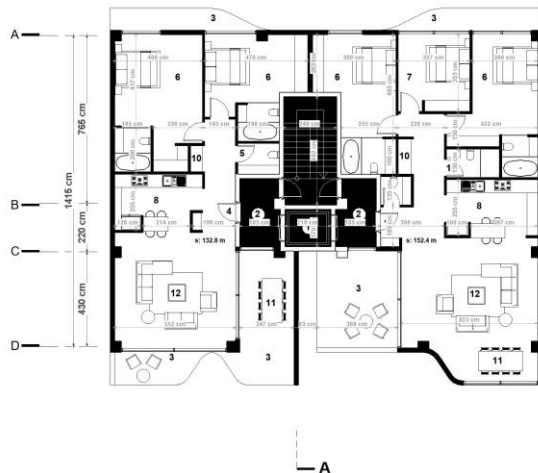


LEVEL 01

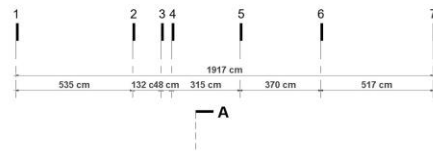




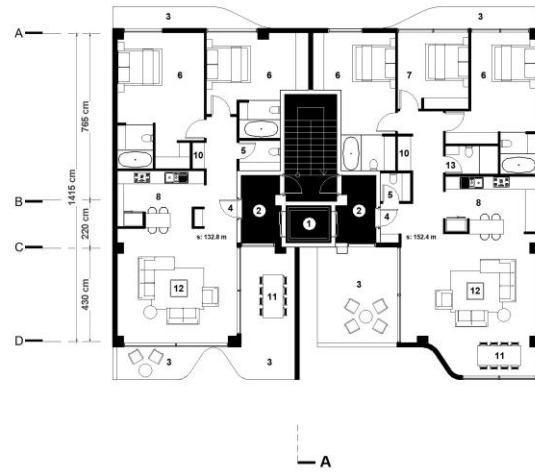
- 1 Elevator
- 2 Lobby
- 3 Balcony
- 4 Entrance
- 5 WC
- 6 Master Room
- 7 Bed Room
- 8 Kitchen
- 9 Back kitchen
- 10 Laundry
- 11 Dining Room
- 12 Living Room
- 13 Bath Room



LEVEL 02,04

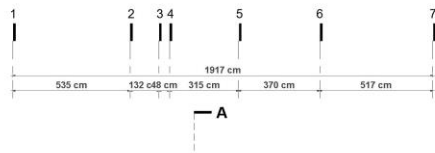


- 1 Elevator
- 2 Lobby
- 3 Balcony
- 4 Entrance
- 5 WC
- 6 Master Room
- 7 Bed Room
- 8 Kitchen
- 9 Back kitchen
- 10 Laundry
- 11 Dining Room
- 12 Living Room
- 13 Bath Room

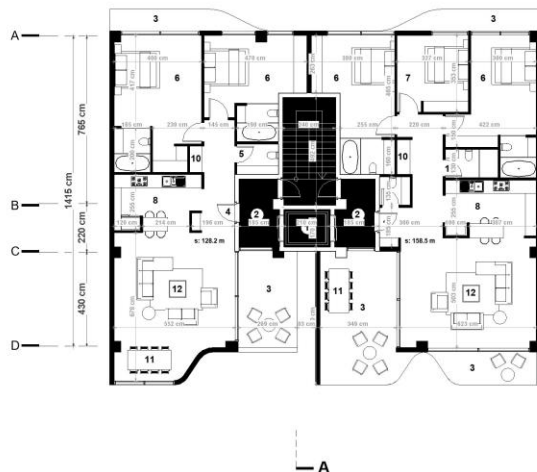


LEVEL 02,04

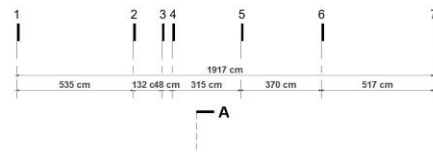




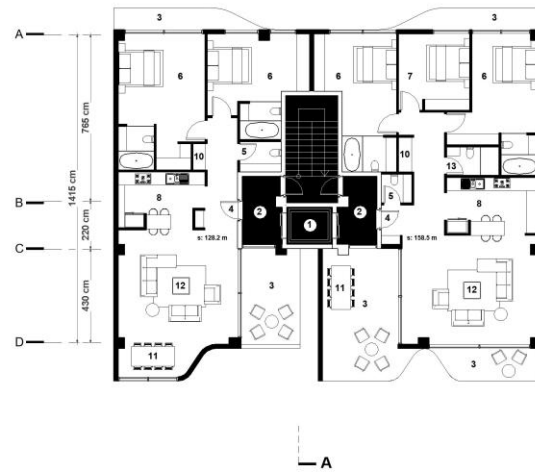
- 1 Elevator
- 2 Lobby
- 3 Balcony
- 4 Entrance
- 5 WC
- 6 Master Room
- 7 Bed Room
- 8 Kitchen
- 9 Back kitchen
- 10 Laundry
- 11 Dining Room
- 12 Living Room
- 13 Bath Room



LEVEL 03

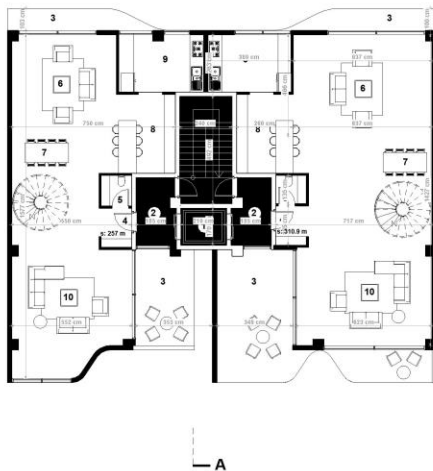
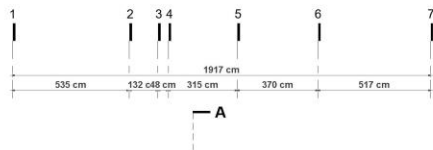


- 1 Elevator
- 2 Lobby
- 3 Balcony
- 4 Entrance
- 5 WC
- 6 Master Room
- 7 Bed Room
- 8 Kitchen
- 9 Back kitchen
- 10 Laundry
- 11 Dining Room
- 12 Living Room
- 13 Bath Room



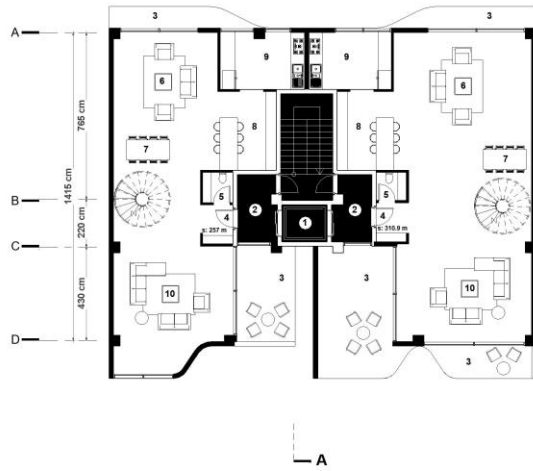
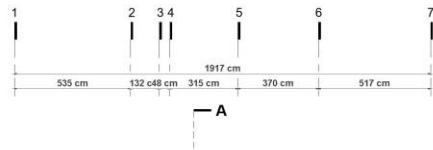
LEVEL 03





- 1 Elevator
- 2 Lobby
- 3 Balcony
- 4 Entrance
- 5 WC
- 6 TV Room
- 7 Dining Room
- 8 Kitchen
- 9 Back kitchen
- 10 Living Room

LEVEL 05

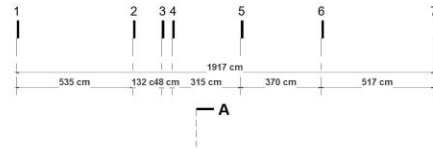
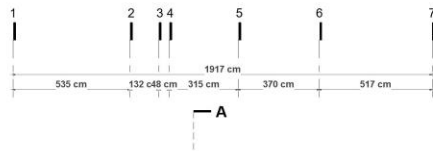


- 1 Elevator
- 2 Lobby
- 3 Balcony
- 4 Entrance
- 5 WC
- 6 TV Room
- 7 Dining Room
- 8 Kitchen
- 9 Back kitchen
- 10 Living Room

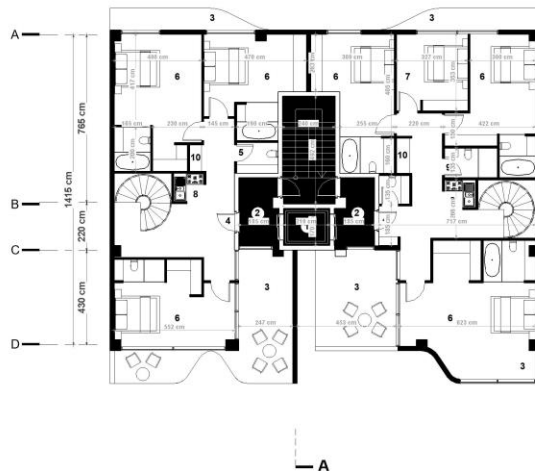
LEVEL 05



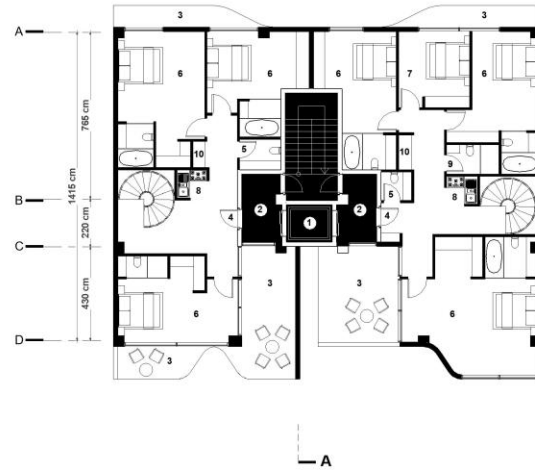




- 1 Elevator
- 2 Lobby
- 3 Balcony
- 4 Entrance
- 5 WC
- 6 Master Room
- 7 Bed Room
- 8 Kitchenette
- 9 Bath Room
- 10 Laundry



- 1 Elevator
- 2 Lobby
- 3 Balcony
- 4 Entrance
- 5 WC
- 6 Master Room
- 7 Bed Room
- 8 Kitchenette
- 9 Bath Room
- 10 Laundry

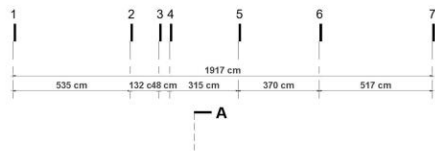


LEVEL 06



LEVEL 06

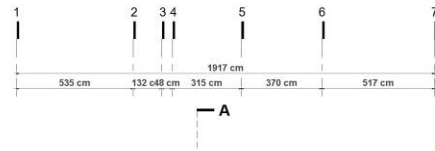




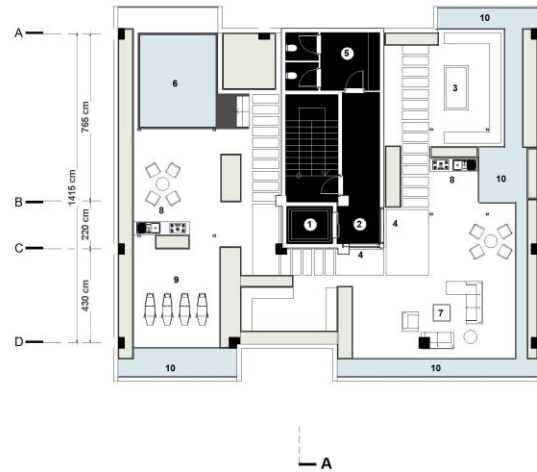
- 1 Elevator
- 2 Lobby
- 3 Fire place
- 4 Entrance
- 5 WC
- 6 Jacuzzi
- 7 Party zone
- 8 Kitchenette
- 9 Sun lounge
- 10 Fountain



LEVEL RF



- 1 Elevator
- 2 Lobby
- 3 Fire place
- 4 Entrance
- 5 WC
- 6 Jacuzzi
- 7 Party zone
- 8 Kitchenette
- 9 Sun lounge
- 10 Fountain



LEVEL RF



















SAHRA RESIDENCE





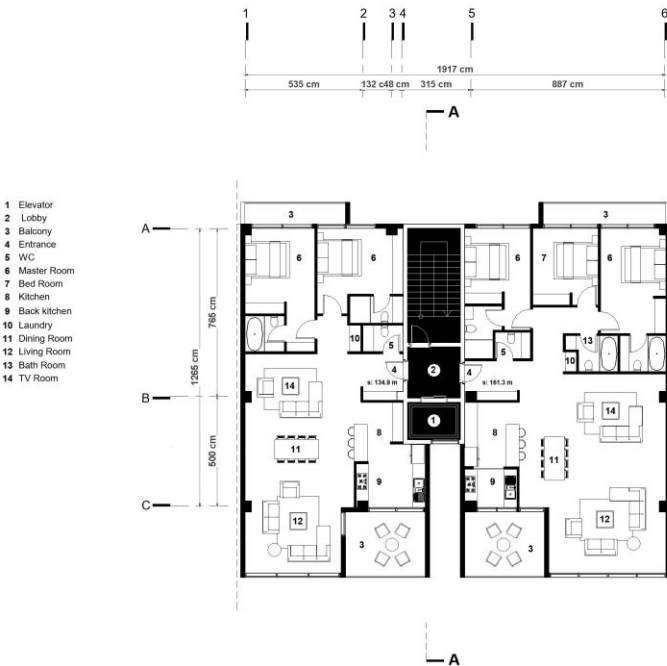
**ALTERNATIVE 05**

جدول مساحت کلی مسابقه معمرا									
کاربری	مسکونی		راه پله + آسانسور و لابی	پارکینگ	انبار		مساحت کل طبقه		
	واحد	مساحت			مساحت واحدها	مساحت			
زیرزمین ۱-	-	-	-	14	واحد	00.00	384.11		
همکف	-	-	-	4	12	1	288		
اول	2	296.2	واحد شرقی : 161.3 واحد غربی : 134.9	23.6	-	-	320		
دوم	2	291.3	واحد شرقی : 158.4 واحد غربی : 132.9	23.6	-	-	315.2		
سوم	2	291	واحد شرقی : 158.7 واحد غربی : 132.3	23.6	-	-	315.2		
چهارم	2	291.3	واحد شرقی : 158.4 واحد غربی : 132.9	23.6	-	-	315.2		
پنجم	1	317.1	واحد مسکونی : 317.1	23.6	-	-	315.2		
ششم	1	265.1	واحد مسکونی : 265.1	23.6	-	-	315.2		
جمع	مجموع مسکونی		-	مجموع تعداد پارکینگ	مجموع مساحت انبار		مساحت کل مجموعه		
	10	1752	-	18	12	24	2568.11		

دیوارهای مشترک بین فضای مسکونی و مشاعات (راه پله، آسانسور و لابی) جزء مساحت مسکونی محاسبه می شود

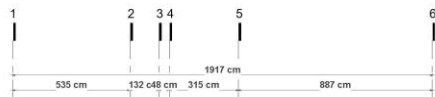
نیازی به پر کردن خانه های با علامت (-) نیست

لطفاً پلی لاین مساحت کل طبقه و واحدهای مسکونی در فایل اتوکد ترسیم شود



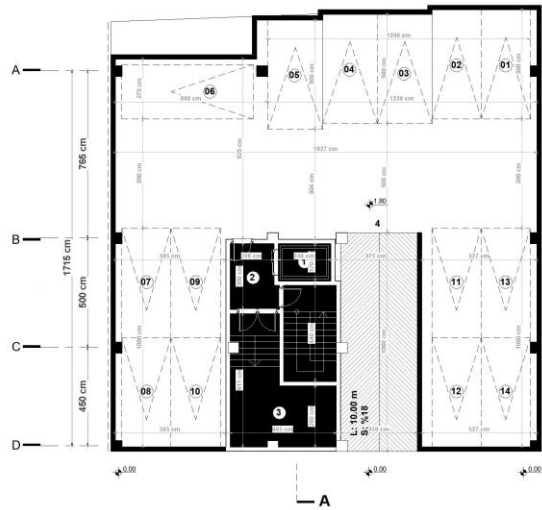
LEVEL 01



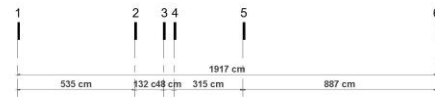


A

- 1 Elevator
- 2 Lobby
- 3 Mechanical Room
- 4 Car entrance

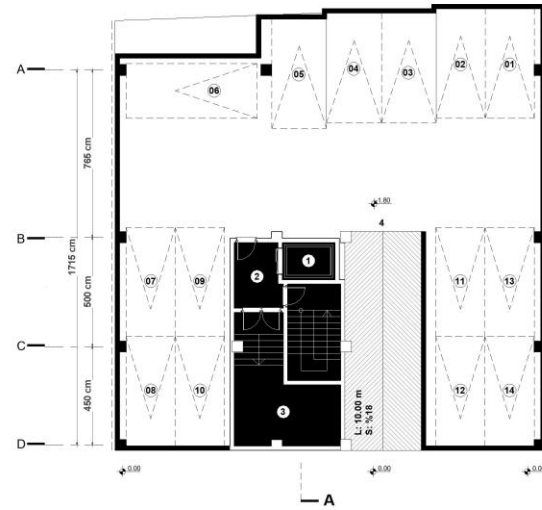


LEVEL -01



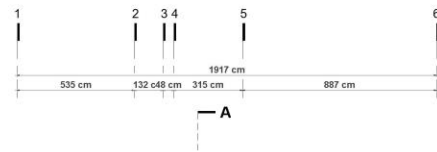
A

- 1 Elevator
- 2 Lobby
- 3 Mechanical Room
- 4 Car entrance

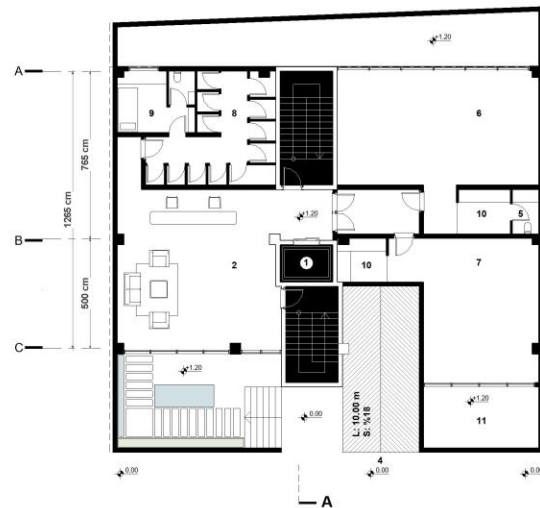


LEVEL -01





- 1 Elevator
- 2 Lobby
- 3 Mechanical Room
- 4 Car entrance
- 5 WC
- 6 Party Room
- 7 GYM
- 8 Store
- 9 Caretaker
- 10 Walk in closet
- 11 Terrace

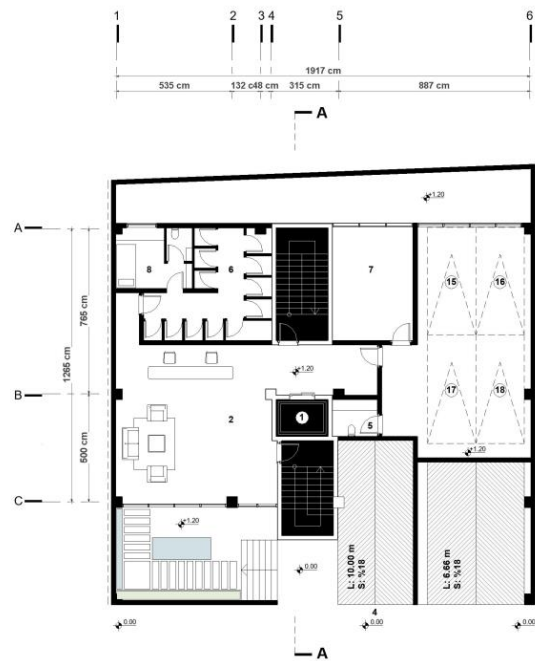


**LEVEL GF**



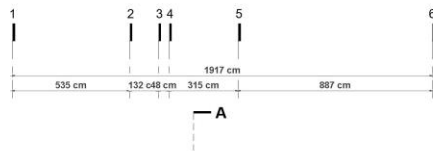


LEVEL GF-TYPE02



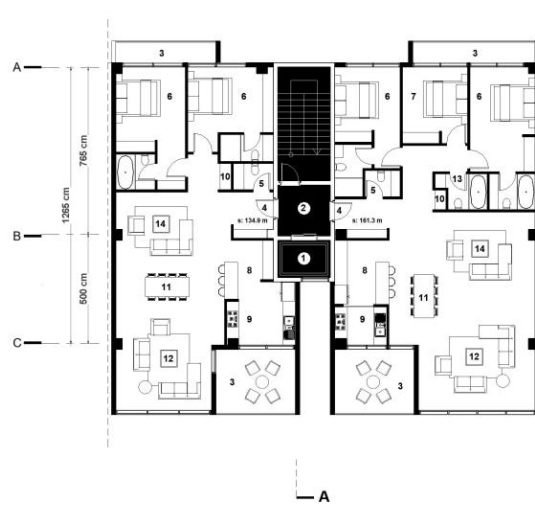
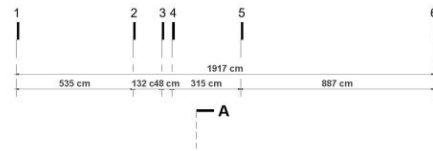
LEVEL GF-TYPE02





- 1 Elevator
- 2 Lobby
- 3 Balcony
- 4 Entrance
- 5 WC
- 6 Master Room
- 7 Bed Room
- 8 Kitchen
- 9 Back kitchen
- 10 Laundry
- 11 Dining Room
- 12 Living Room
- 13 Bath Room

LEVEL 01



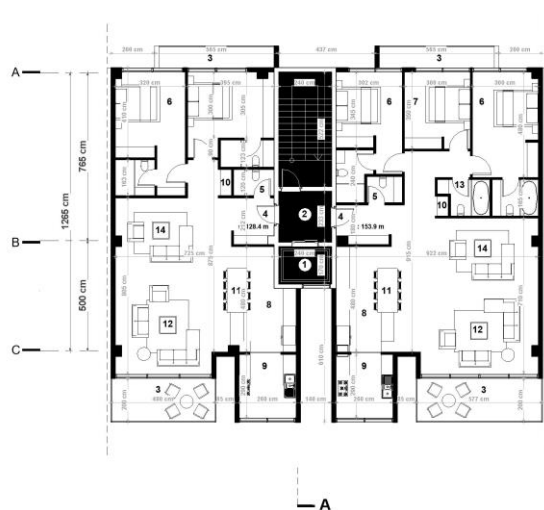
- 1 Elevator
- 2 Lobby
- 3 Balcony
- 4 Entrance
- 5 WC
- 6 Master Room
- 7 Bed Room
- 8 Kitchen
- 9 Back kitchen
- 10 Laundry
- 11 Dining Room
- 12 Living Room
- 13 Bath Room
- 14 TV Room

LEVEL 01





**A**

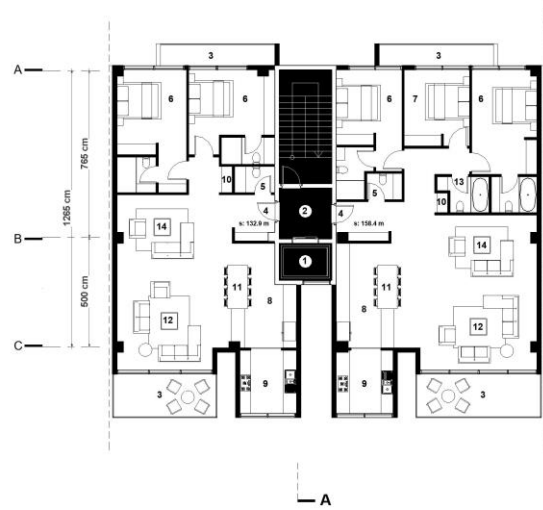


- 1 Elevator
- 2 Lobby
- 3 Balcony
- 4 Entrance
- 5 WC
- 6 Master Room
- 7 Bed Room
- 8 Kitchen
- 9 Back kitchen
- 10 Laundry
- 11 Dining Room
- 12 Living Room
- 13 Bath Room

**LEVEL 02,04**



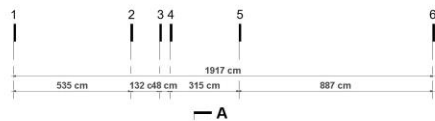
**— A**



- 1 Elevator
- 2 Lobby
- 3 Balcony
- 4 Entrance
- 5 WC
- 6 Master Room
- 7 Bed Room
- 8 Kitchen
- 9 Back kitchen
- 10 Laundry
- 11 Dining Room
- 12 Living Room
- 13 Bath Room
- 14 TV Room

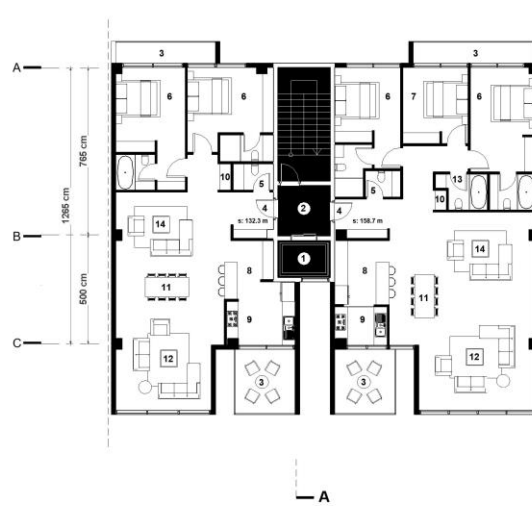
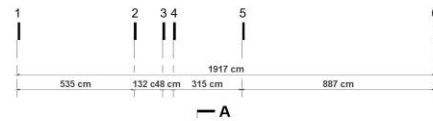
**LEVEL 02,04**





- 1 Elevator
- 2 Lobby
- 3 Balcony
- 4 Entrance
- 5 WC
- 6 Master Room
- 7 Bed Room
- 8 Kitchen
- 9 Back kitchen
- 10 Laundry
- 11 Dining Room
- 12 Living Room
- 13 Bath Room
- 14 TV Room

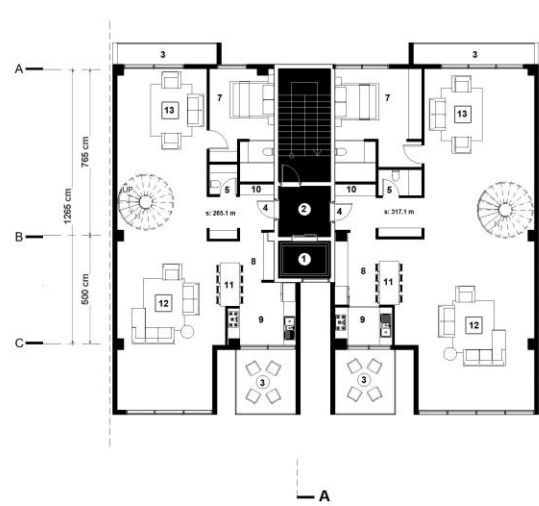
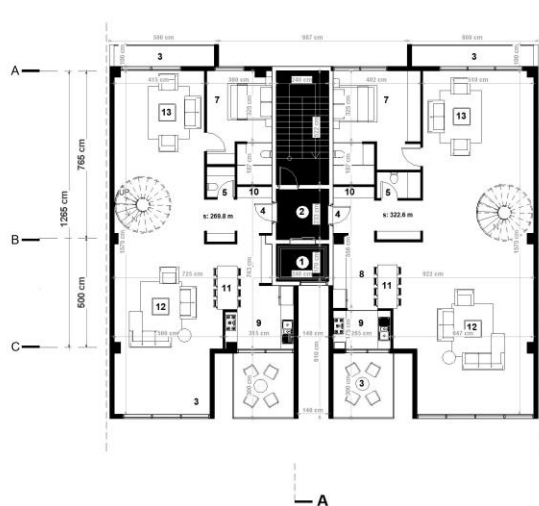
LEVEL 03

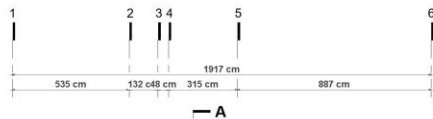


- 1 Elevator
- 2 Lobby
- 3 Balcony
- 4 Entrance
- 5 WC
- 6 Master Room
- 7 Bed Room
- 8 Kitchen
- 9 Back kitchen
- 10 Laundry
- 11 Dining Room
- 12 Living Room
- 13 Bath Room
- 14 TV Room

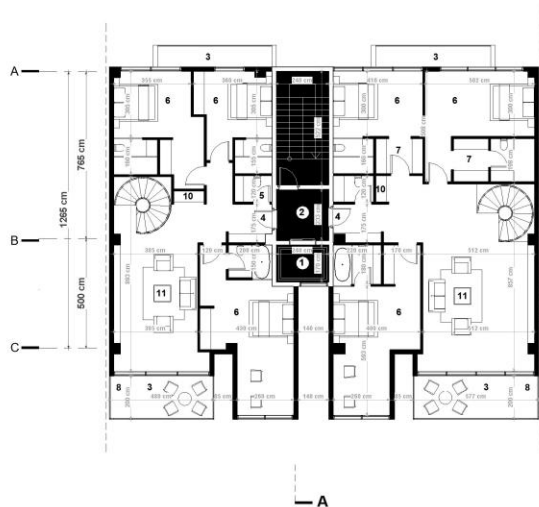
LEVEL 03



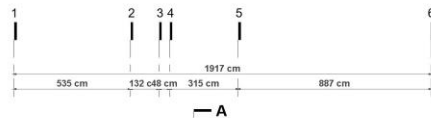




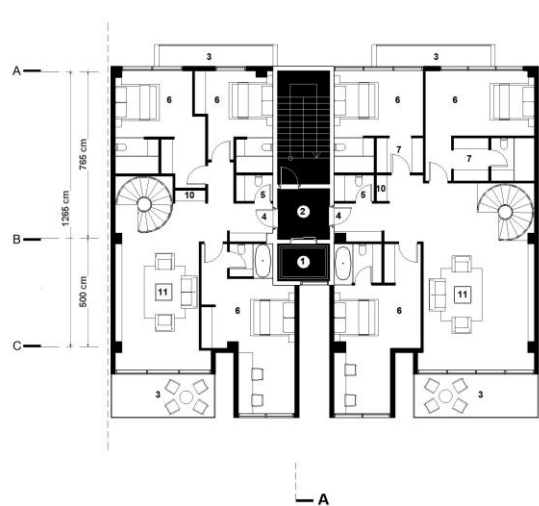
- 1 Elevator
- 2 Lobby
- 3 Balcony
- 4 Entrance
- 5 WC
- 6 Master Room
- 7 Walk in closet
- 8 Kitchenette
- 9 Back kitchen
- 10 Laundry
- 11 TV Room



LEVEL 06

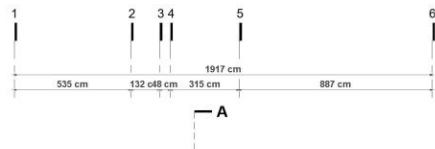


- 1 Elevator
- 2 Lobby
- 3 Balcony
- 4 Entrance
- 5 WC
- 6 Master Room
- 7 Walk in closet
- 8 Kitchenette
- 9 Back kitchen
- 10 Laundry
- 11 TV Room



LEVEL 06

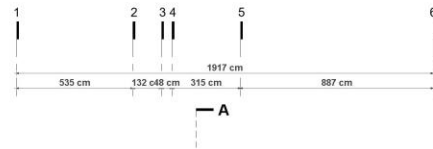




- 1 Elevator
- 2 Lobby
- 3 Fire place
- 4 Entrance
- 5 WC
- 6 Jacuzzi
- 7 Party zone
- 8 Kitchenette
- 9 Sun lounge
- 10 Fountain



LEVEL RF



- 1 Elevator
- 2 Lobby
- 3 Fire place
- 4 Entrance
- 5 WC
- 6 Jacuzzi
- 7 Party zone
- 8 Kitchenette
- 9 Sun lounge
- 10 Fountain



LEVEL RF



















**ALTERNATIVE 06**

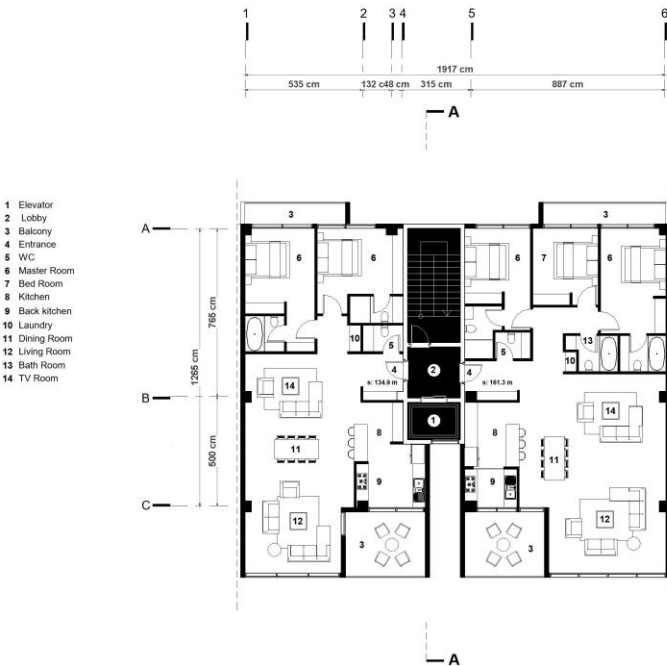
جدول مساحت کلی مسابقه معررا							
طبقه	کاربری		مسکونی		راه پله + آسانسور/لابی	پارکینگ	انبار
	واحد	مساحت	مساحت واحدها	مساحت	مساحت	تعداد	واحد
نیززمین ۱-	-	-	-	-	-	14	00.00
همکف	-	-	-	-	-	4	12
اول	2	296.2	واحد شرقی : 161.3 واحد غربی : 134.9	23.6	-	-	-
دوم	2	291.3	واحد شرقی : 158.4 واحد غربی : 132.9	23.6	-	-	-
سوم	2	291	واحد شرقی : 158.7 واحد غربی : 132.3	23.6	-	-	-
چهارم	2	291.3	واحد شرقی : 158.4 واحد غربی : 132.9	23.6	-	-	-
پنجم	1	297	واحد مسکونی : 297	23.6	-	-	-
ششم	1	297	واحد مسکونی : 297	23.6	-	-	-
جمع	مساحت مسکونی		مساحت مسکونی		-	مجموع تعداد پارکینگ	مجموع مساحت انبار
	10	1763.8	2577.71		-	18	24

دیوارهای مشترک بین فضای مسکونی و مشاعات(راه پله، آسانسور و لابی) جزء مساحت مسکونی محاسبه می شود

نیازی به پر کردن خانه های با علامت (-) نیست

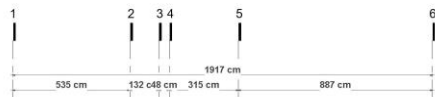
لطفاً پلی لاین مساحت کل طبقه و واحدهای مسکونی در فایل اتوکد ترسیم شود



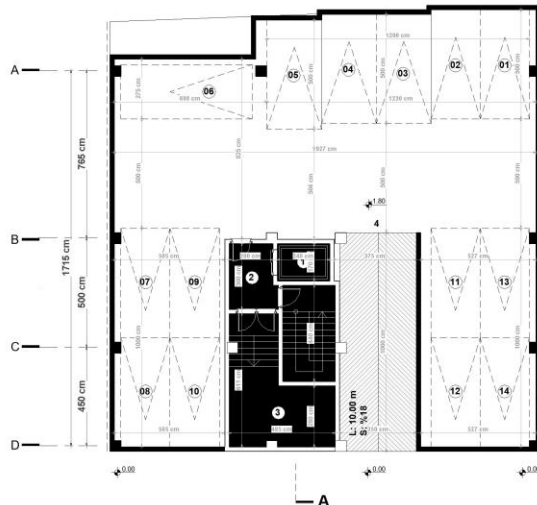


LEVEL 01



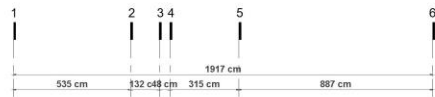


A

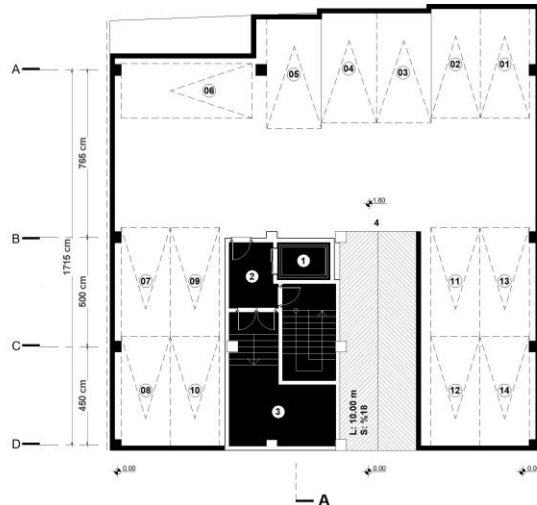


- 1 Elevator
- 2 Lobby
- 3 Mechanical Room
- 4 Car entrance

LEVEL -01



A

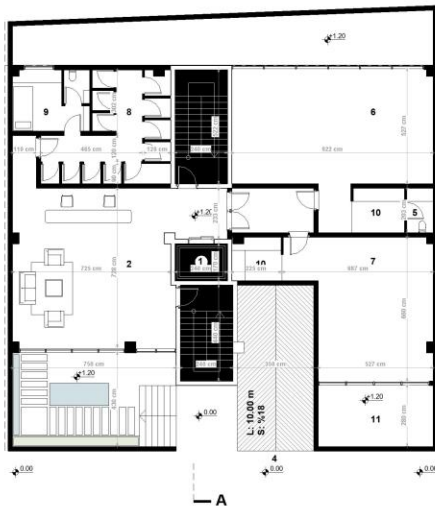
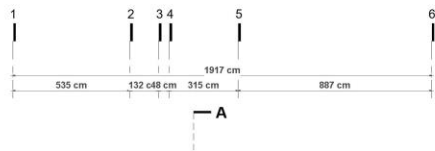


- 1 Elevator
- 2 Lobby
- 3 Mechanical Room
- 4 Car entrance

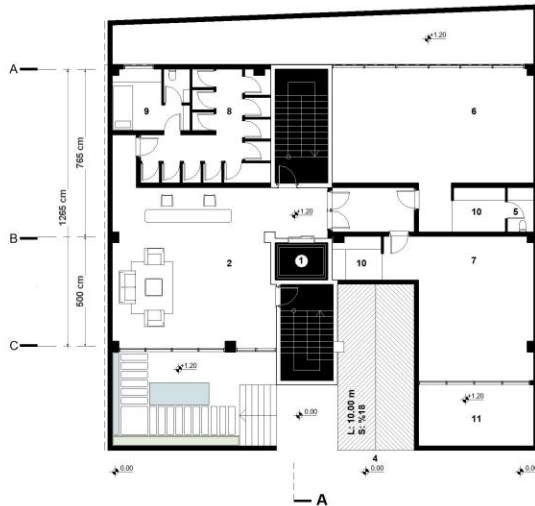
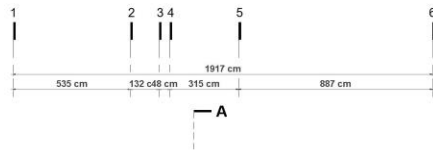
LEVEL -01







LEVEL GF



LEVEL GF



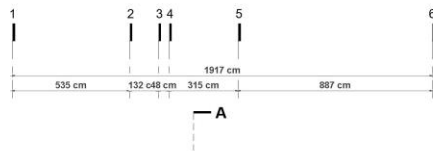


LEVEL GF-TYPE02



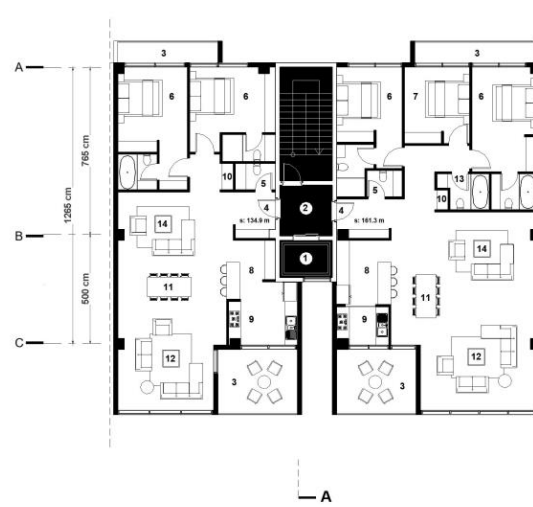
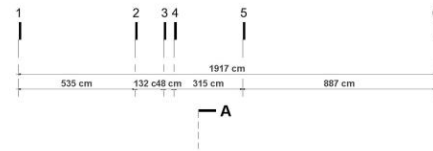
LEVEL GF-TYPE02





- 1 Elevator
- 2 Lobby
- 3 Balcony
- 4 Entrance
- 5 WC
- 6 Master Room
- 7 Bed Room
- 8 Kitchen
- 9 Back kitchen
- 10 Laundry
- 11 Dining Room
- 12 Living Room
- 13 Bath Room

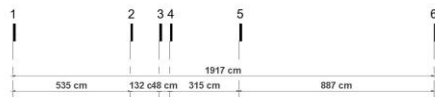
LEVEL 01



- 1 Elevator
- 2 Lobby
- 3 Balcony
- 4 Entrance
- 5 WC
- 6 Master Room
- 7 Bed Room
- 8 Kitchen
- 9 Back kitchen
- 10 Laundry
- 11 Dining Room
- 12 Living Room
- 13 Bath Room
- 14 TV Room

LEVEL 01





A

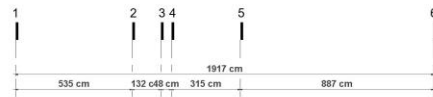


A

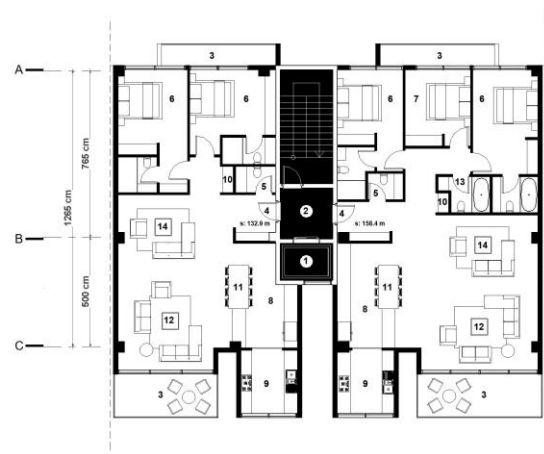
LEVEL 02,04



SAHRA RESIDENCE



A



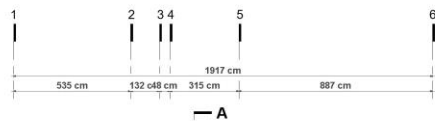
A

LEVEL 02,04



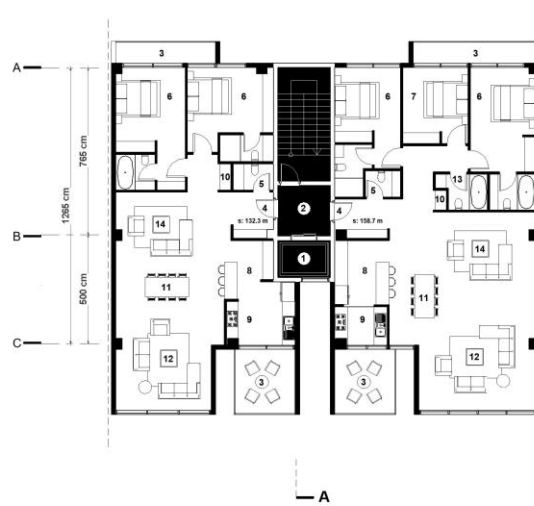
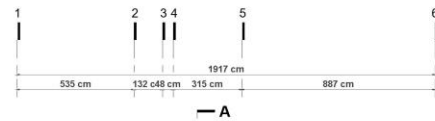
- 1 Elevator
- 2 Lobby
- 3 Balcony
- 4 Entrance
- 5 WC
- 6 Master Room
- 7 Bed Room
- 8 Kitchen
- 9 Back kitchen
- 10 Laundry
- 11 Dining Room
- 12 Living Room
- 13 Bath Room

- 1 Elevator
- 2 Lobby
- 3 Balcony
- 4 Entrance
- 5 WC
- 6 Master Room
- 7 Bed Room
- 8 Kitchen
- 9 Back kitchen
- 10 Laundry
- 11 Dining Room
- 12 Living Room
- 13 Bath Room
- 14 TV Room



- 1 Elevator
- 2 Lobby
- 3 Balcony
- 4 Entrance
- 5 WC
- 6 Master Room
- 7 Bed Room
- 8 Kitchen
- 9 Back kitchen
- 10 Laundry
- 11 Dining Room
- 12 Living Room
- 13 Bath Room
- 14 TV Room

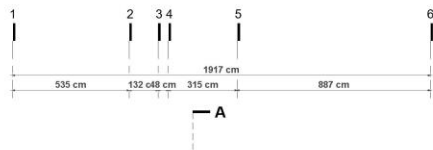
LEVEL 03



- 1 Elevator
- 2 Lobby
- 3 Balcony
- 4 Entrance
- 5 WC
- 6 Master Room
- 7 Bed Room
- 8 Kitchen
- 9 Back kitchen
- 10 Laundry
- 11 Dining Room
- 12 Living Room
- 13 Bath Room
- 14 TV Room

LEVEL 03

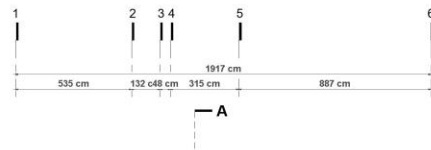




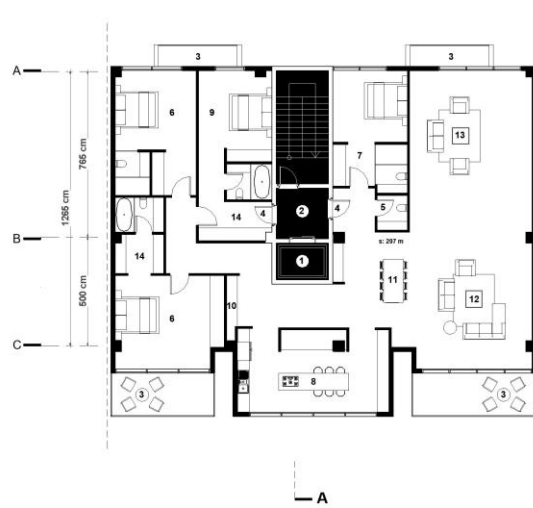
- 1 Elevator
- 2 Lobby
- 3 Balcony
- 4 Entrance
- 5 WC
- 6 Master Room
- 7 Guest Room
- 8 Kitchen
- 9 Back kitchen
- 10 Laundry
- 11 Dining Room
- 12 Living Room
- 13 TV Room



LEVEL 05,06

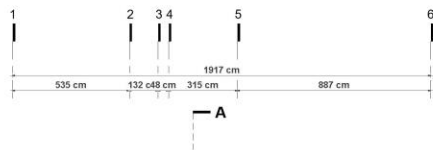


- 1 Elevator
- 2 Lobby
- 3 Balcony
- 4 Entrance
- 5 WC
- 6 Master Room
- 7 Guest Room
- 8 Kitchen
- 9 Suite
- 10 Laundry
- 11 Dining Room
- 12 Living Room
- 13 TV Room
- 14 Walk in closet



LEVEL 05,06



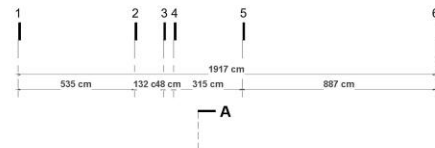


- 1 Elevator
- 2 Lobby
- 3 Fire place
- 4 Entrance
- 5 WC
- 6 Jacuzzi
- 7 Party zone
- 8 Kitchenette
- 9 Sun lounge
- 10 Fountain



A

LEVEL RF



- 1 Elevator
- 2 Lobby
- 3 Fire place
- 4 Entrance
- 5 WC
- 6 Jacuzzi
- 7 Party zone
- 8 Kitchenette
- 9 Sun lounge
- 10 Fountain



A

LEVEL RF

















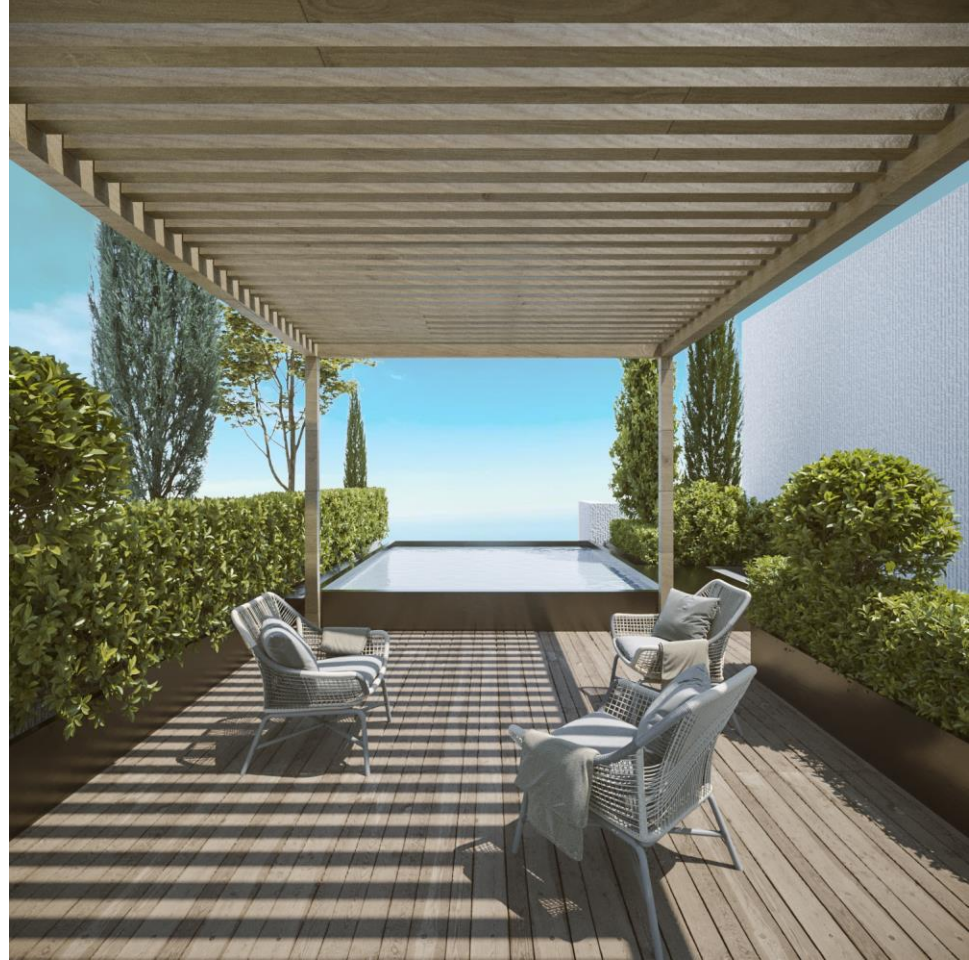
**ROOF GARDEN**

















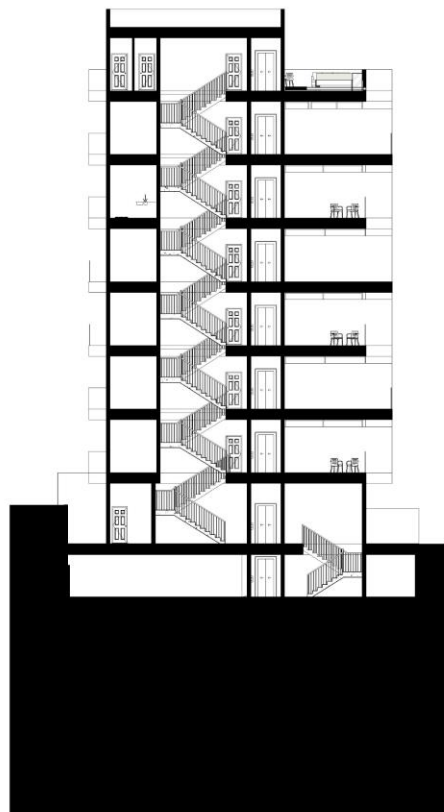


- WHITE GRANITE
- WHITE CEMENT
- WHITE STONE
- EXTREM LINEL GRANITE
- BRICK
- EXTREM LINEL GRANITE









TOP	30.4 m
RF	26.8 m
L6	23.2 m
L5	19.6 m
L4	16 m
L3	12.4 m
L2	8.8 m
L1	5.2 m
GF	1.2 m
P1	-1.6 m

SECTION A-A



1



2



3



4



5



6



**THANK YOU FOR ATTENTION.**

**Unit 42 , No.72 , Amirparviz Tower , Sanaei St , Jordan St , Tehran , iran**

**Tel: + 98 21 22887811**

**+ 98 912 875 6199**

**+ 98 919 022 4246**

**Fax : + 98 21 22887812**

**info@Arminarman.com**



| ARMINARMAN.COM |