

sarveh fakher

shadow.studio

Graphic plan

Measurement plan

section

diagram

Oedogram

Winter 1403



CONTENT

01 Description
توضیحات

02 Floor plan parking lot
پلان طبقه پارکینگ

03 Floor plan ground
پلان طبقه همکف

04 Floor plan 01 and 02
پلان طبقات اول و دوم

05 Floor plan 03
پلان طبقه سوم

06 Floor plan 04 and 05
پلان طبقات چهارم و پنجم

07 Section
برش

08 Concept(the viwo)
کانسپت(نما)

09 Close view (input)
نمای نزدیک (ورودی)

10 Oedogram(the patio)
ایدئوگرام(نورگیر)

11 Jacuzzi space
فضا جکوزی

12 Material
متریال

13-24 Rendering
رندر

Description

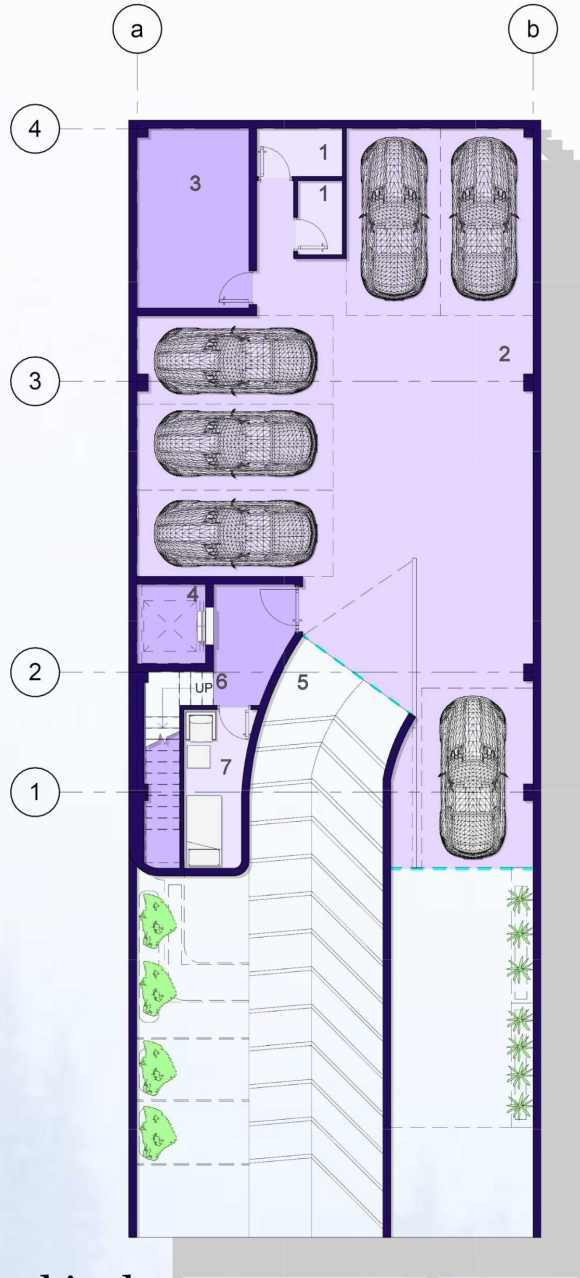
توضیحات

Since Iranian architecture is full of originality and beauty, it was decided to design based on Iranian architecture. We created visual beauty in the facade and interior space by using Fakhr-e-Modin and reflecting geometric lights into the interior, because architecture does not exist without light, just as music does not exist without air. Also, the use of brick material in the arches in the window-sitting room and the fountain at the entrance made this possible. Considering the beauty standards of today's society, we completed the design with modern architecture by combining glass-black stone materials in the facade.

از آنجایی که معماری ایرانی سراسر اصالت و زیبایی است تصمیم بر آن شد. طراحی را بر مبنای معماری ایرانی انجام دهیم که این امر با بکار بردن فخرمدین و بازتاب نورهای هندسی به داخل زیبایی بصری در نما و فضا داخلی به وجود آوردیم، چرا که معماری بدون نور وجود ندارد همانطور که موسیقی بدون هوا وجود ندارد همچنین از قوس ها در پنجره، پیرنشین و آبنما در قسمت ورودی استفاده از متریال آجراین امر را میسر بخشید و با توجه به استانداردهای زیبایی جامعه امروزی آن را با معماری مدرن با تلفیق متریال شیشه، سنگ مشکی در نما طراحی را به اتمام رسانیدیم.

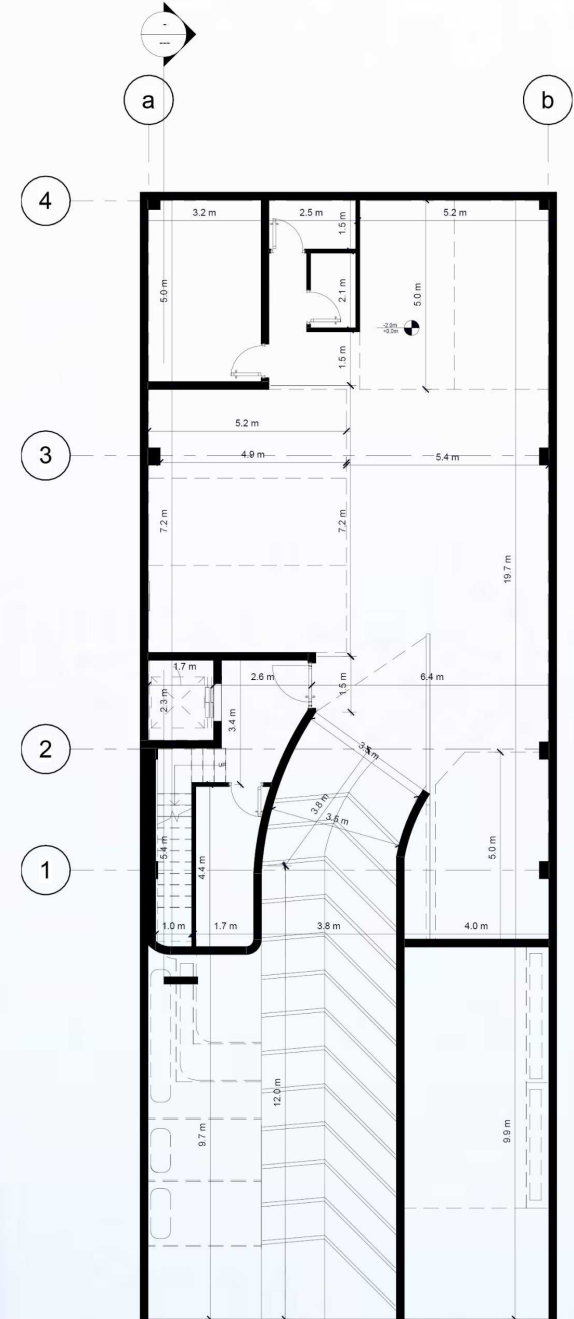


floor plan parking lot

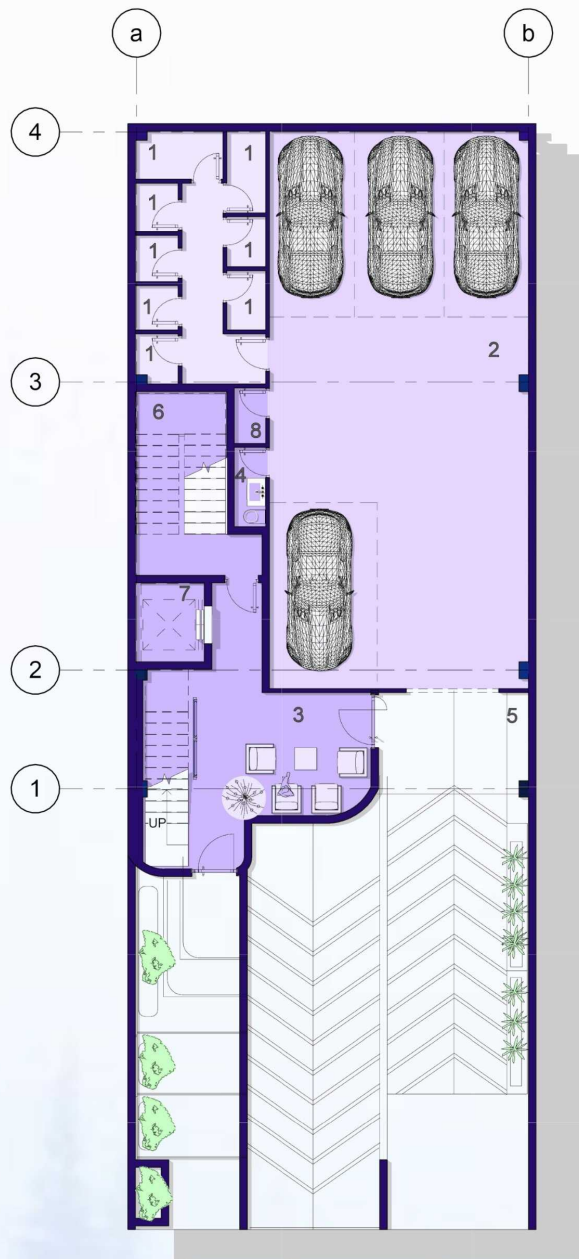


INFO

1. Warehouse
2. Parking
3. facilities
4. Elevator box
5. Ramp
6. stop
7. Caratakers room



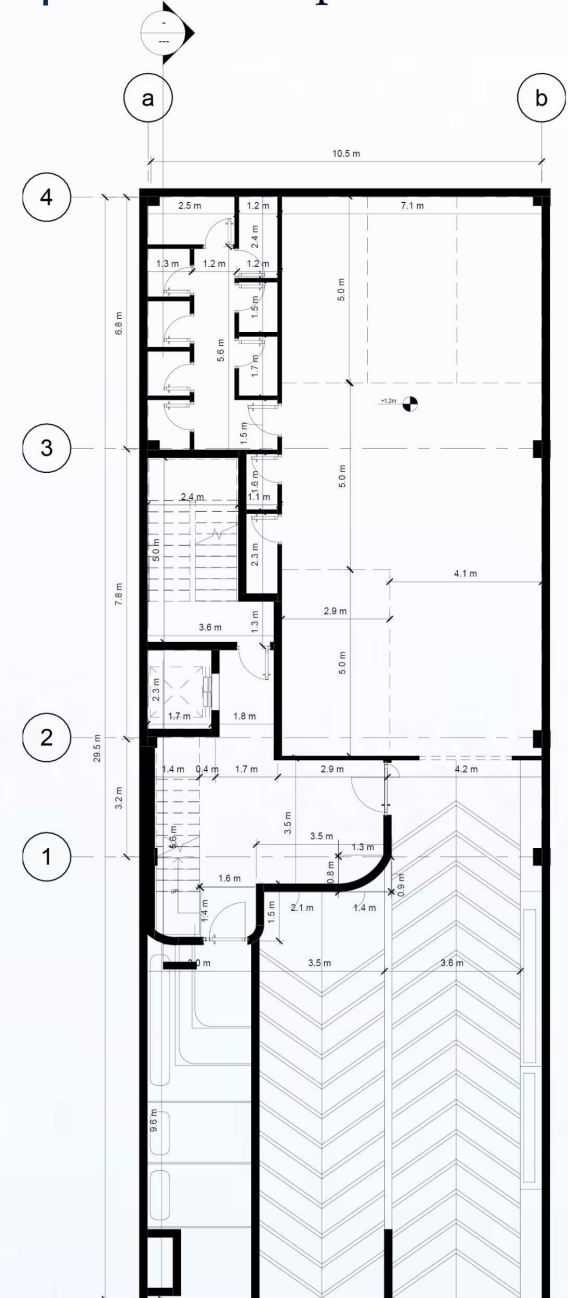
floor plan ground



INFO

- 1. Warehouse
- 2. Parking
- 3. Lobby
- 4. toilet
- 5. Ramp
- 6. stop box
- 7. Elevator box
- 8. space services

Measurement plan

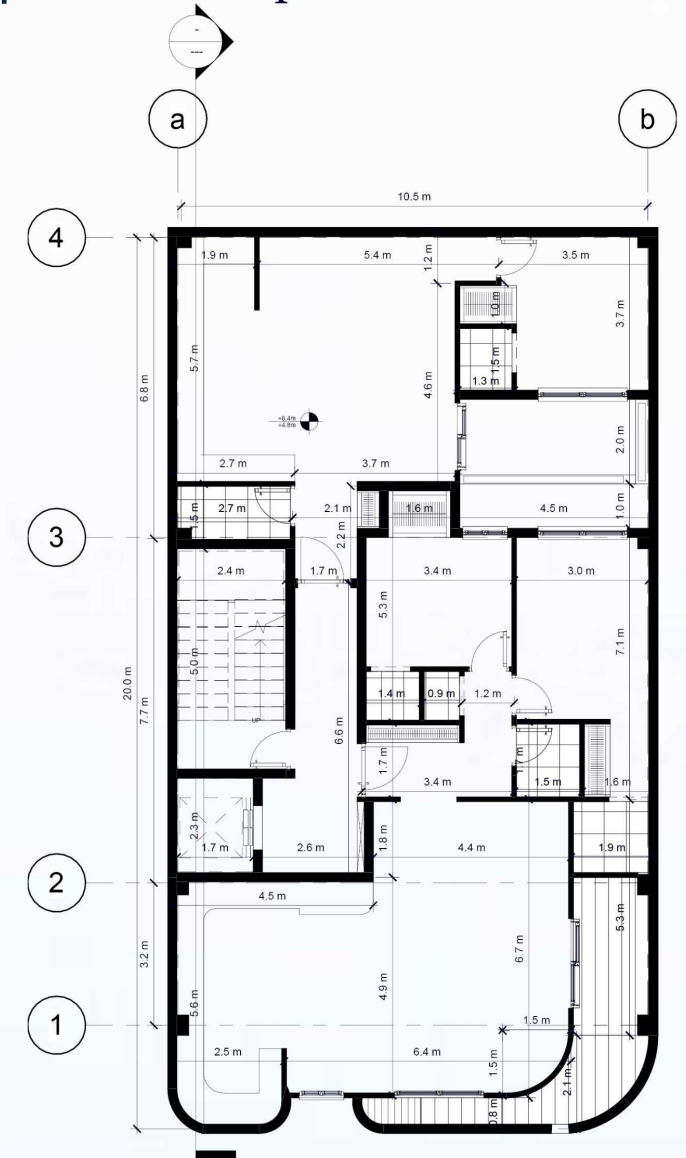


Measurement plan



INFO

1. master bedroom
2. patio
3. kitchen
4. toilet
5. balcony
6. reception hall
8. corridor
9. stop box
10. Elevator box
11. laundry
12. Enough times



Graphic plan.

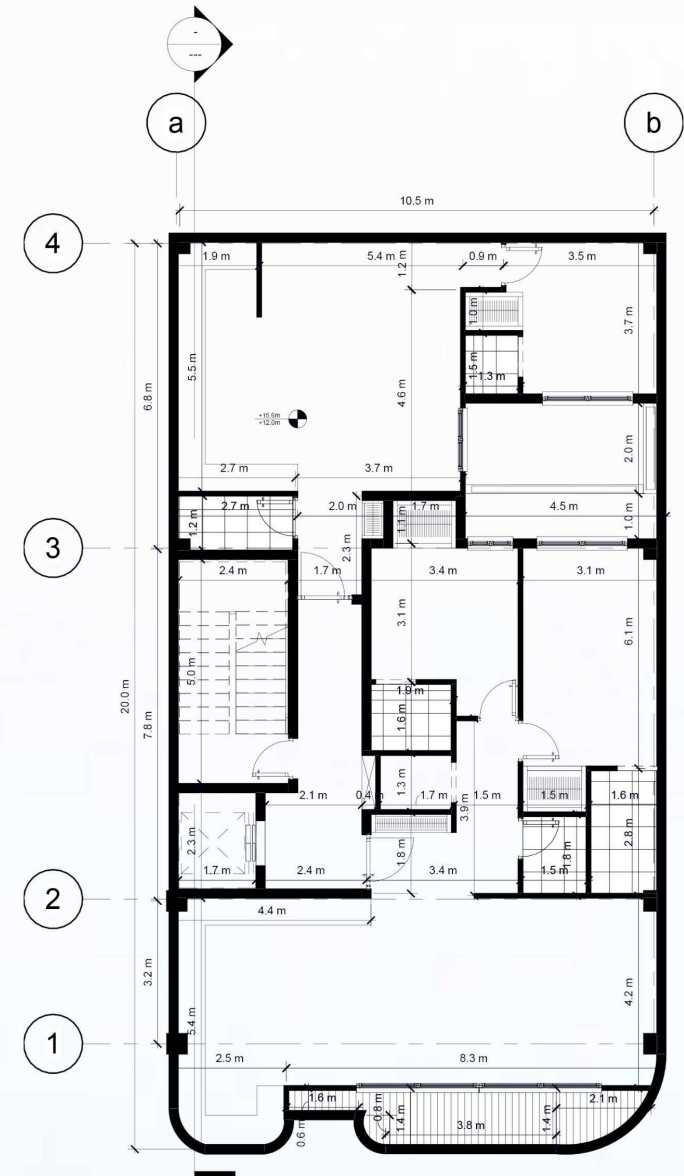
floor plan 3

Measurement plan



INFO

1. master bedroom
2. patio
3. kitchen
4. toilet
5. balcony
6. reception hall
7. corridor
8. stop box
9. Elevator box
10. laundry



This is a detailed architectural floor plan of a building. The plan shows a complex layout of rooms, corridors, and service areas. Key features include:

- Overall Dimensions:** The building is 10.6 m wide and 20.0 m deep.
- Rooms and Areas:**
 - Top Left:** A large room (5.5 m x 2.8 m) with a staircase and a small room (1.9 m x 5.4 m).
 - Top Right:** A room (3.5 m x 3.7 m) with a staircase and a small room (1.3 m x 1.5 m).
 - Middle Left:** A large room (4.2 m x 2.7 m) with a staircase and a small room (1.3 m x 2.7 m).
 - Middle Right:** A large room (3.1 m x 6.1 m) with a staircase and a small room (1.5 m x 1.1 m).
 - Bottom Left:** A large room (1.7 m x 2.3 m) with a staircase and a small room (1.7 m x 1.7 m).
 - Bottom Right:** A large room (1.5 m x 1.8 m) with a staircase and a small room (1.5 m x 1.8 m).
- Corridors and Staircases:** The plan shows a network of corridors and staircases connecting the various rooms. Staircases are located in the top left, top right, middle left, middle right, bottom left, and bottom right.
- Dimensions:** Numerous dimensions are provided for rooms, corridors, and staircases, ranging from 0.6 m to 6.5 m.
- Orientation:** A north arrow is located in the top left corner, pointing towards the top of the page.
- Labels:** The plan is labeled with 'a' and 'b' in circles at the top corners, and '10.6 m' and '20.0 m' at the top and left edges respectively.

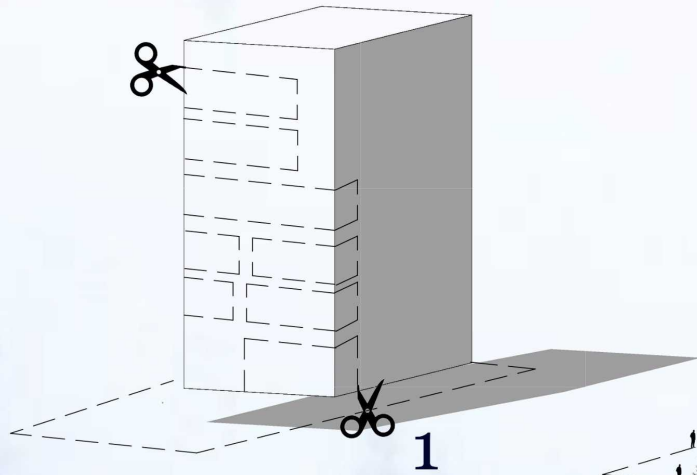
1. master bedroom
2. patio
3. kitchen
4. toilet
5. balcony
6. reception hall
8. corridor
9. stop box
10. Elevator box
11. laundry

section

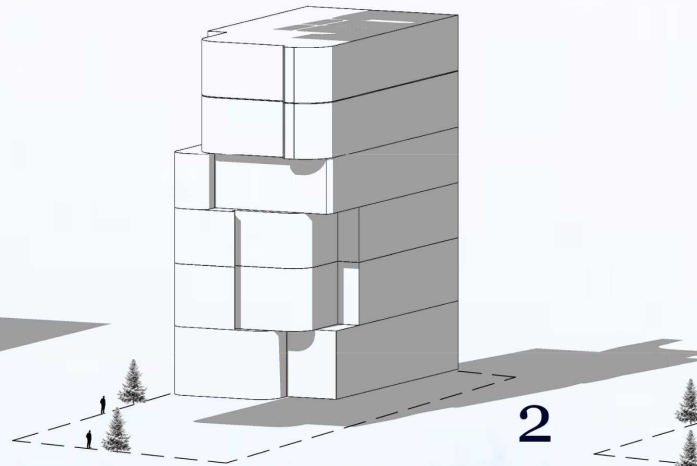
07



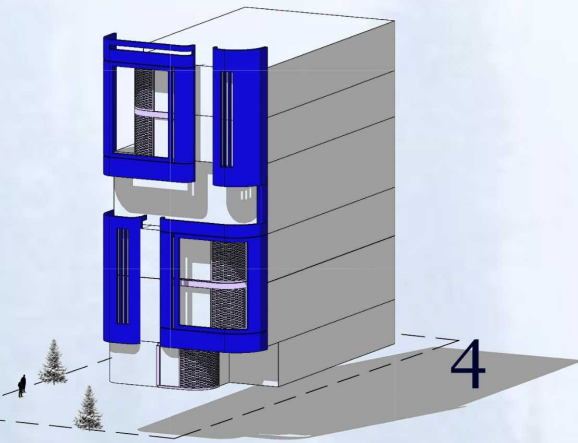
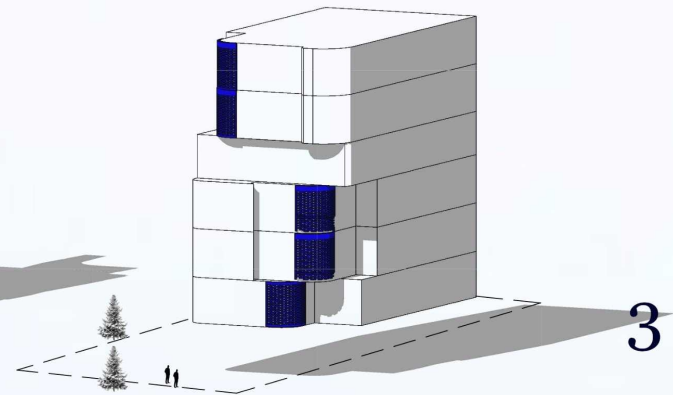
Cutting the volume for facade design



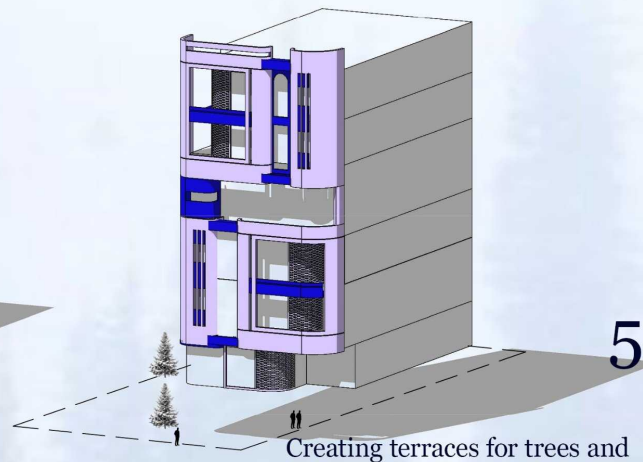
Deepening the cut to create functional terraces



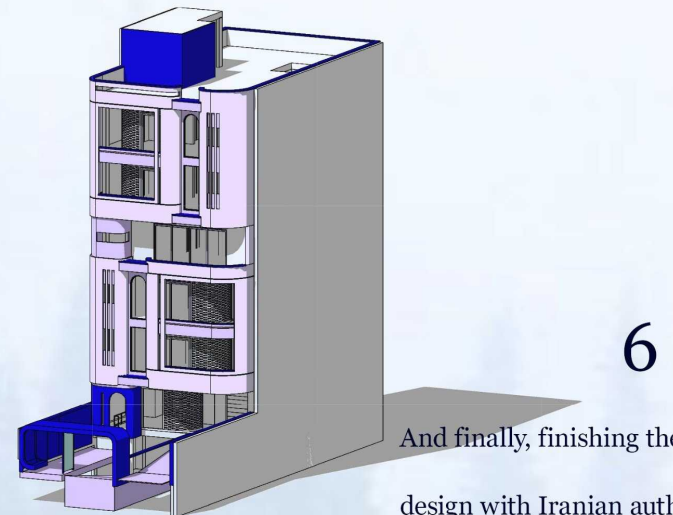
Fakhr Madin's visual beauty reflects the light inside



Shell for balance and balance in the view



Creating terraces for trees and harmony with the landscape

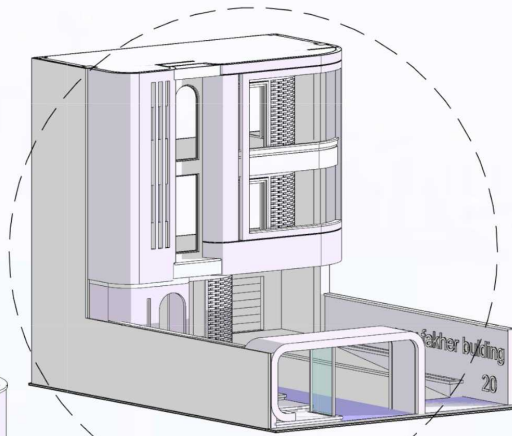


And finally, finishing the facade

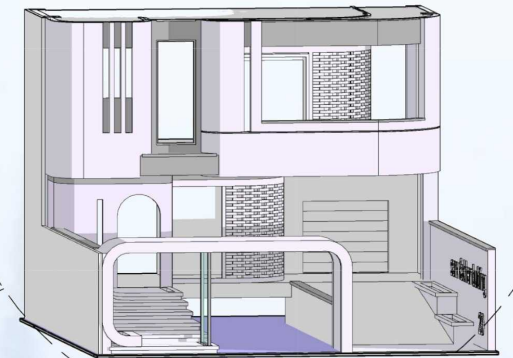
design with Iranian authenticity and beauty

close view (input)

09



Using the water element at the entrance, considering the water view

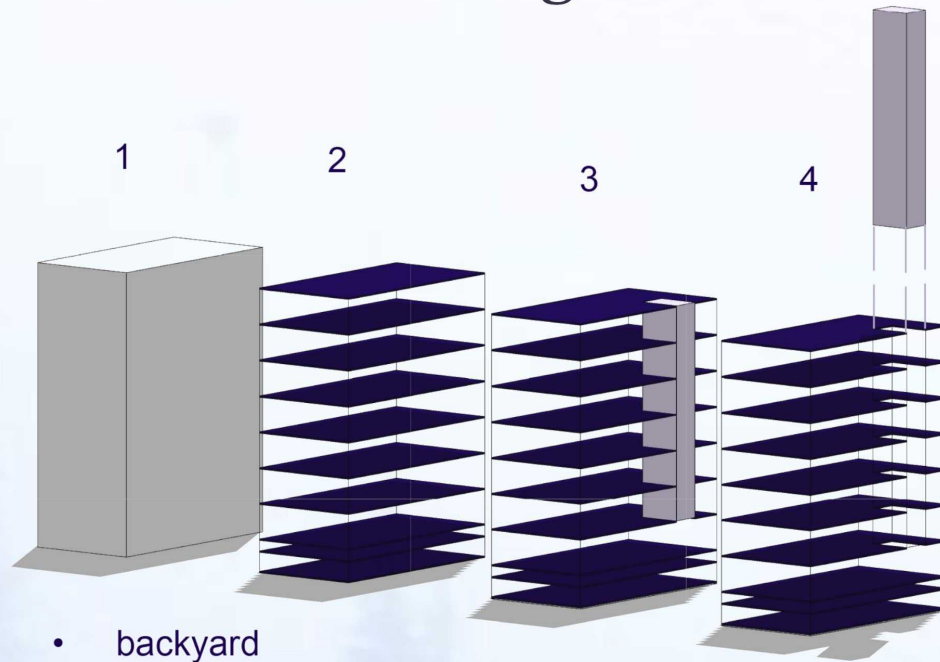


Merging the apartment yard with the street while respecting privacy



Oedogram (the patio)

10



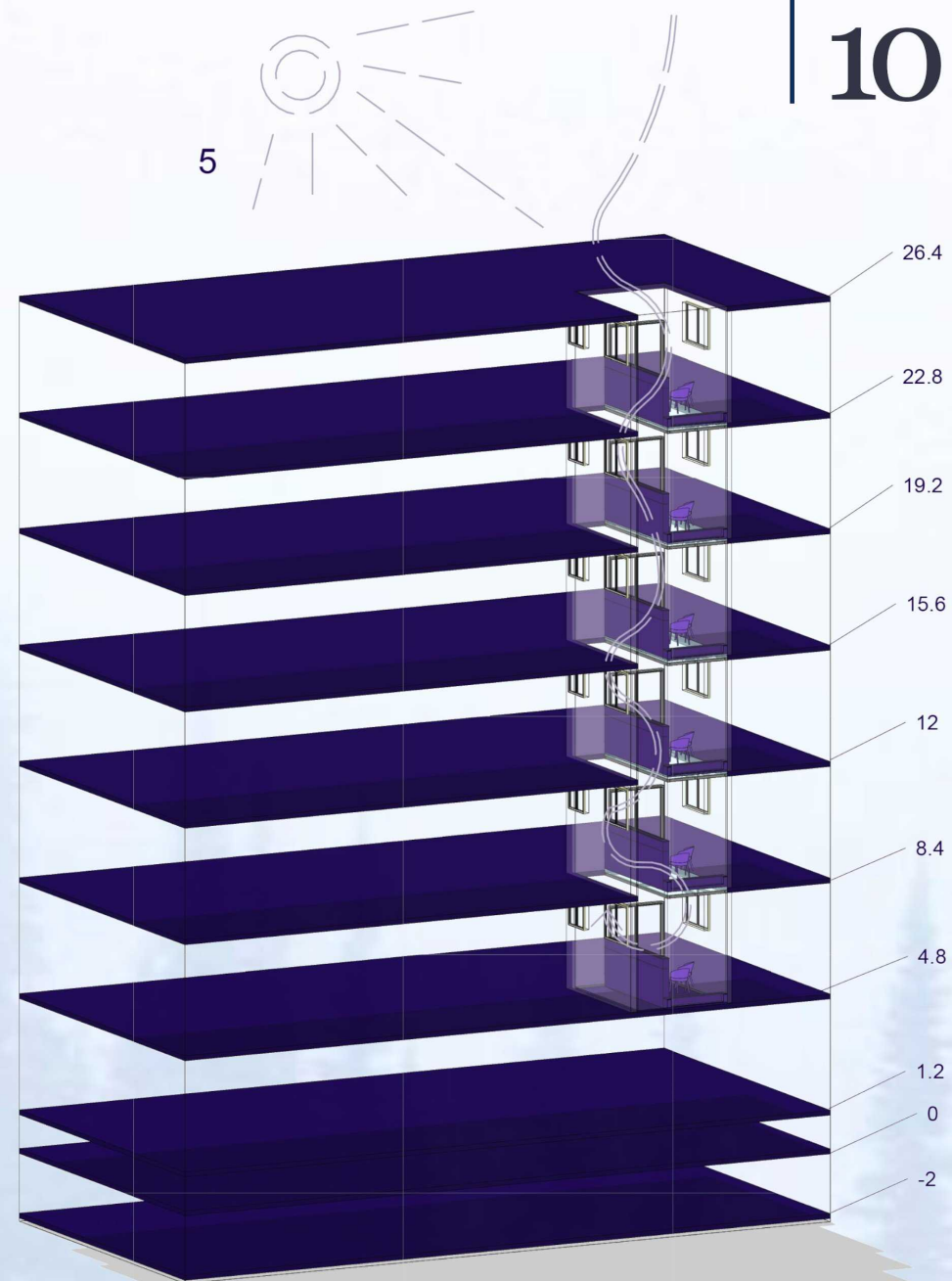
- backyard**

This skylight unit was designed to provide adequate light ventilation, and due to its efficiency, it was designed as a backyard, as well as the security of two adjacent units in the first unit of the garden and the second unit of the terrace and shelter.



- the views**

The entrance is from the living room side of the second unit, and windows with okb2.5 m were considered in the rooms of both units for ventilation and light space, they do not have access to the backyard.



flower box
flower box
shelter
8*8 cans

Mineral tempered glass

green wall

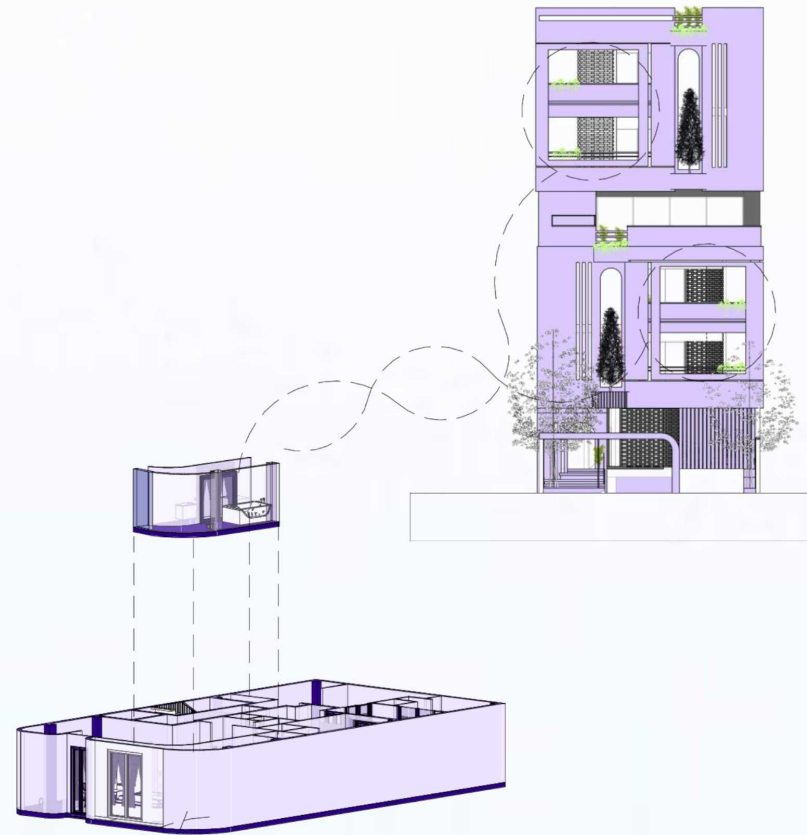
Jacuzzi space

11



INFO

- 1.living room
- 2.master bedroom
- 3.patio
- 4.kitchen
- 5.toilet
- 6.balcony
- 7.reception hall
- 8.corridor
- 9.stop box
- 10.Elevator box
- 11.laundry
- 12.Enough times



material



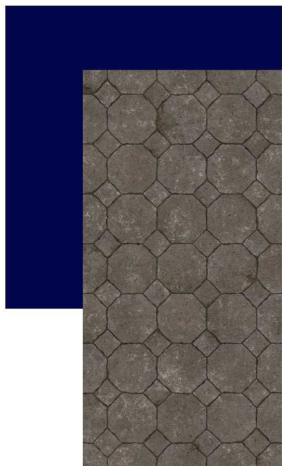
brick

Brick Model:
chamotte Brick
Code:
NBN7310



stone

Ston Model:
Black Rose Marble
Code:
nm160



Paving the area



wood





Render

View 1...



Render

View 2...



Render

View 3...



Render

View 4...



Render

View 5...



Render

View 6...



Render

View 7...



Render

View 8...



Render

View 9...



Render

View 10...



Render

View 11...



Render

the patio



Render

the patio

the end