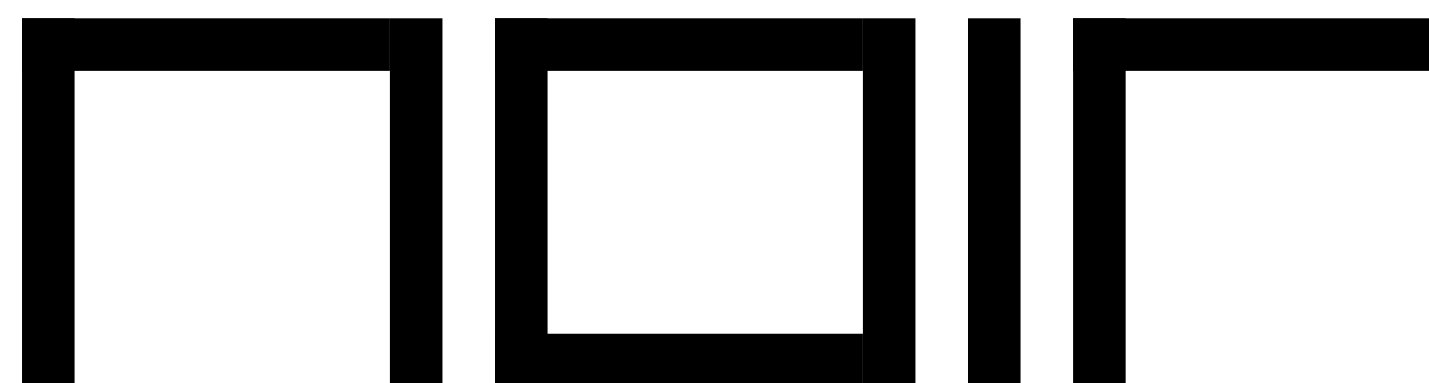


# MADAY BUILDING

NOIROFFICE, An Architectural Design Studio  
Based In Tehran, IRAN





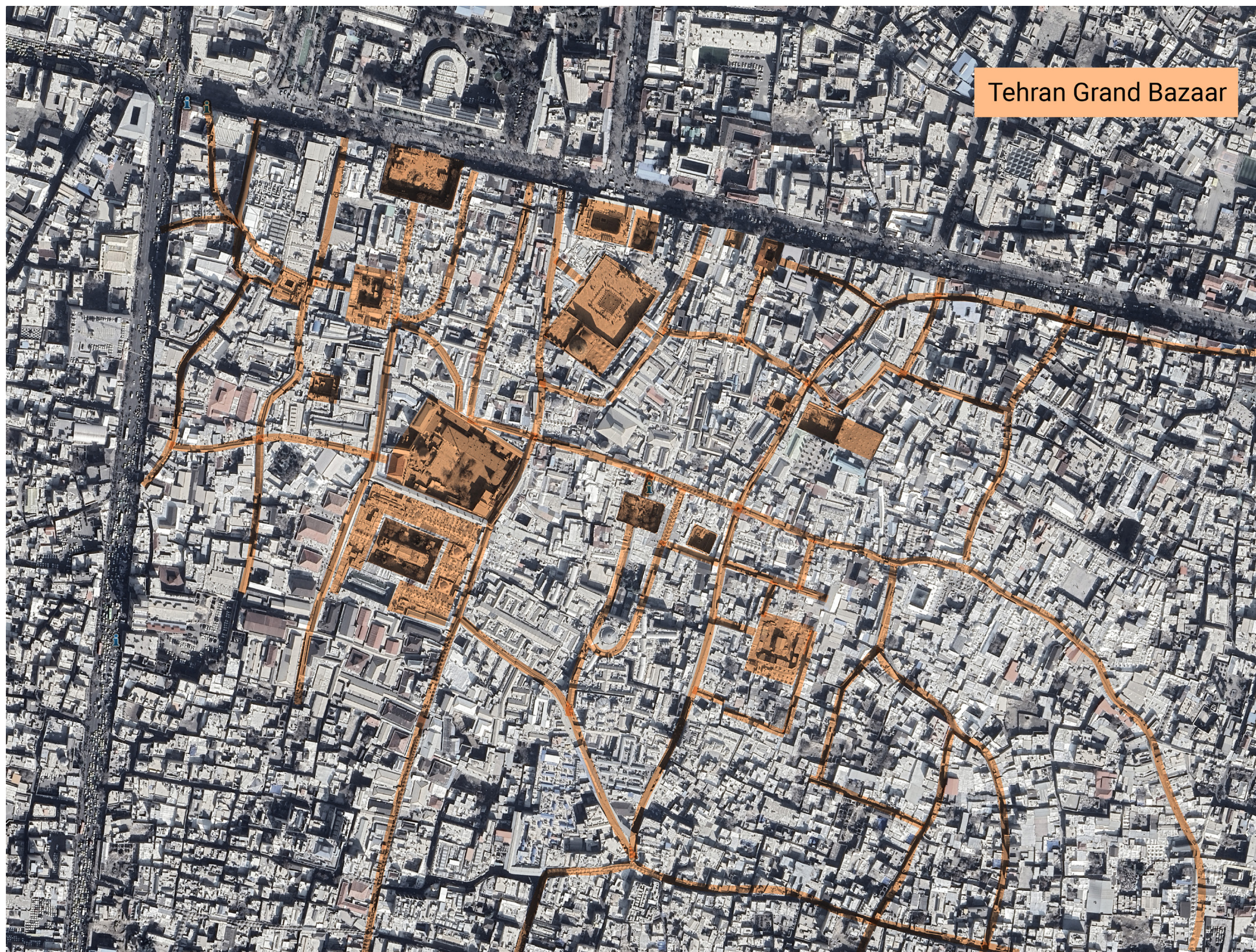
# ABOUT

Established in 2004, Noir Office is an innovative and dynamic architecture and design studio that prides itself on crafting extraordinary spaces that leave a lasting impression. With a passion for creativity and an unwavering commitment to excellence, we have been transforming the way people experience architecture and design for over a decade. At Noir Office, we believe that architecture and design have the power to shape lives. We understand that every space has a unique purpose and tells a story of its own. Our philosophy revolves around seamlessly blending functionality, aesthetics, and the essence of the client's vision into a harmonious masterpiece. Whether it's a modern commercial building, a cozy residential home, or an awe-inspiring interior, we approach each project as a blank canvas with endless possibilities. With years of experience under our belt, our team of highly skilled architects and

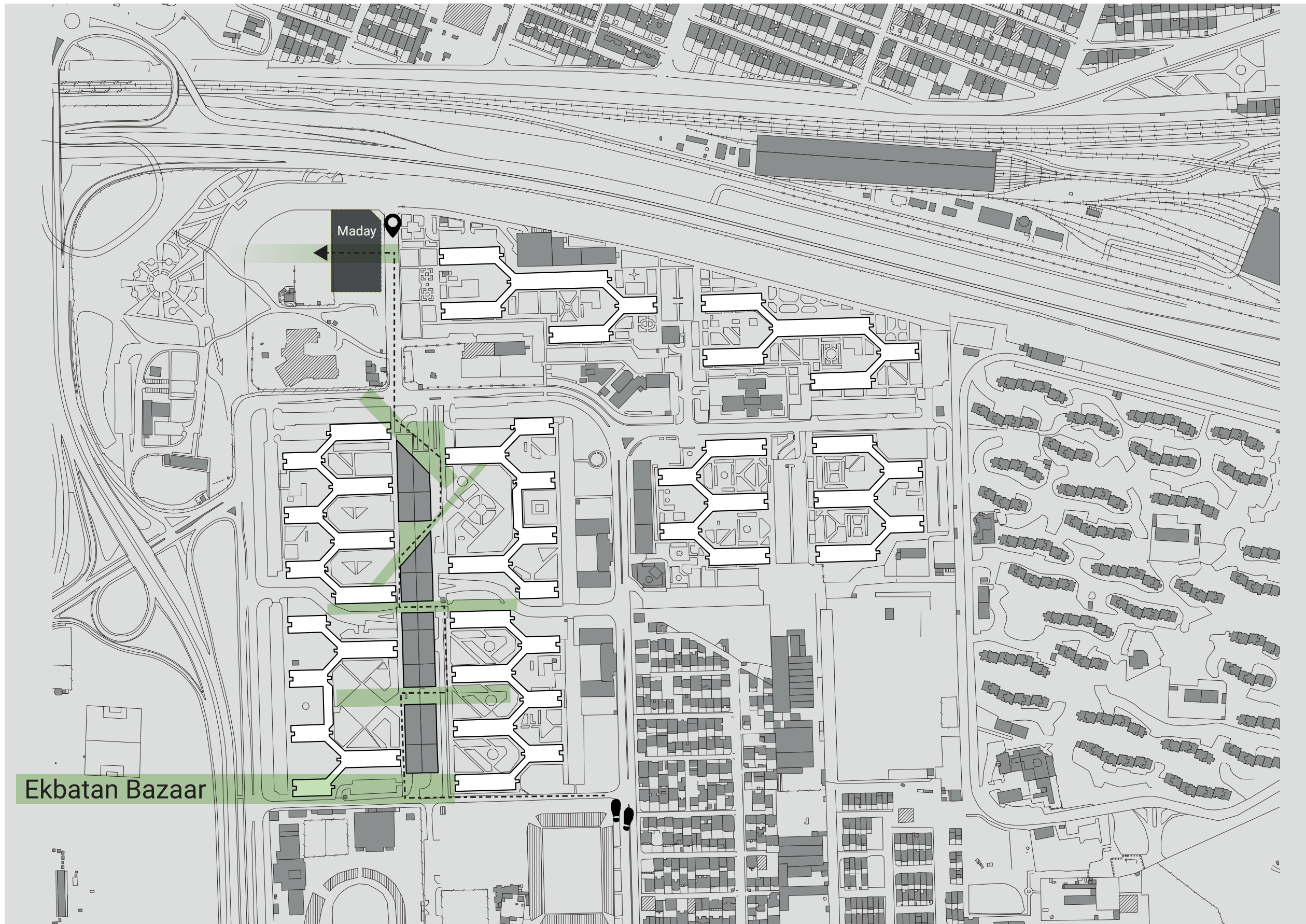
designers possesses the expertise to take on diverse and challenging projects. From conceptualization to execution, we meticulously plan and execute each step, ensuring that every detail is thoughtfully considered. Our portfolio showcases a wide array of successful projects, and it's the satisfaction of our clients that motivates us to continually raise the bar. Creativity lies at the core of everything we do. We are not afraid to push boundaries, challenge conventions, and explore new realms in architecture and design. Our studio fosters a culture of innovation and artistic expression, allowing us to infuse each project with a unique touch that reflects the individuality of our clients. As stewards of the environment, we take sustainability seriously. Incorporating eco-friendly practices and materials into our designs is not just a responsibility but a commitment we make towards a greener and more sustainable future. We believe

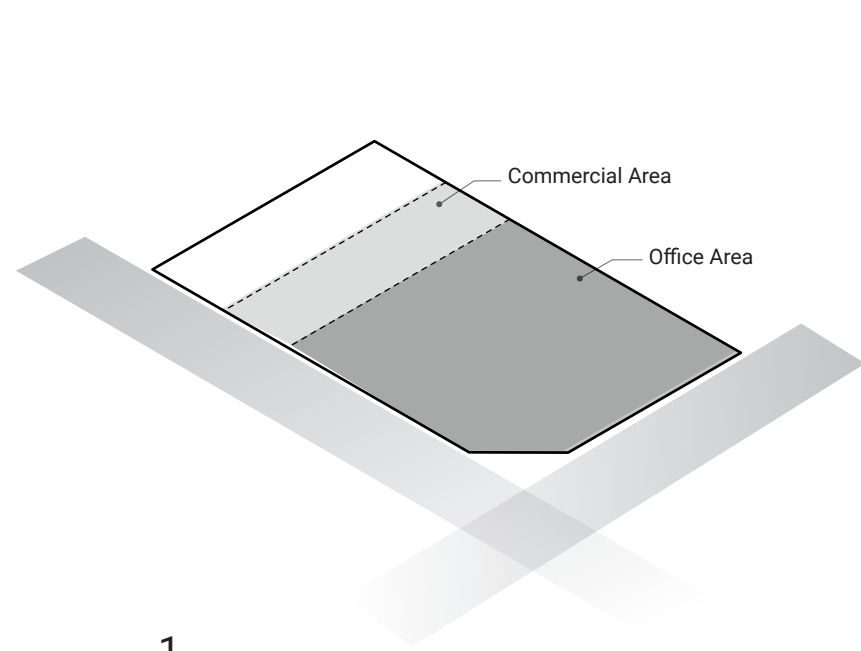
that architecture should embrace nature, minimize environmental impact, and enhance the well-being of the occupants. Whether you are an individual dreaming of your perfect home, a business looking to redefine your workspace, or an organization seeking visionary designs, Noir Office welcomes you to embark on an architectural journey with us. Together, we will bring your aspirations to life, leaving a legacy of remarkable spaces that inspire and endure.



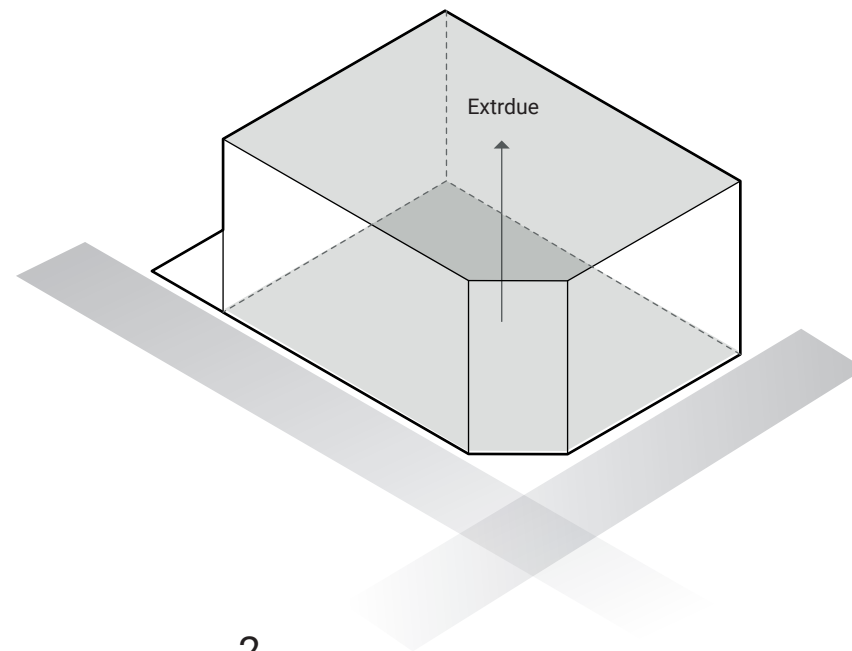




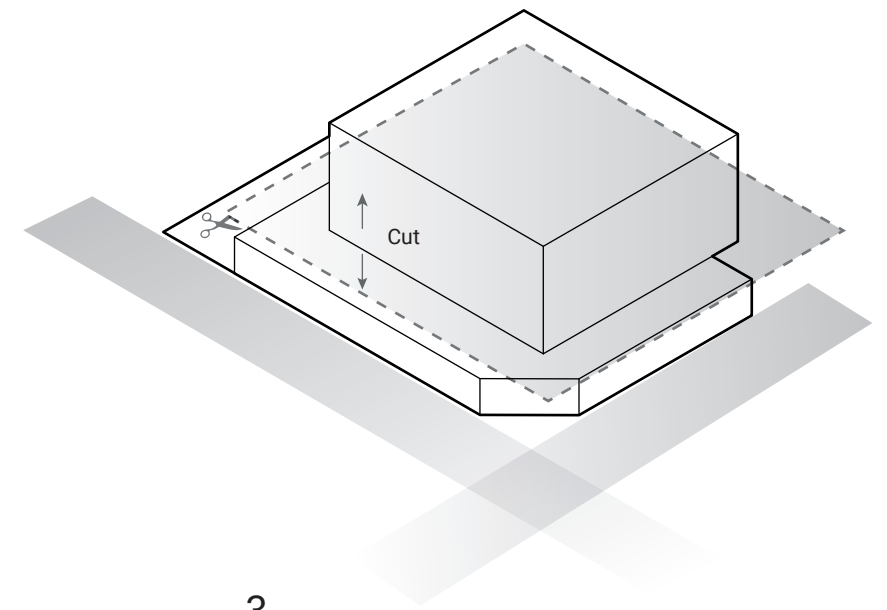




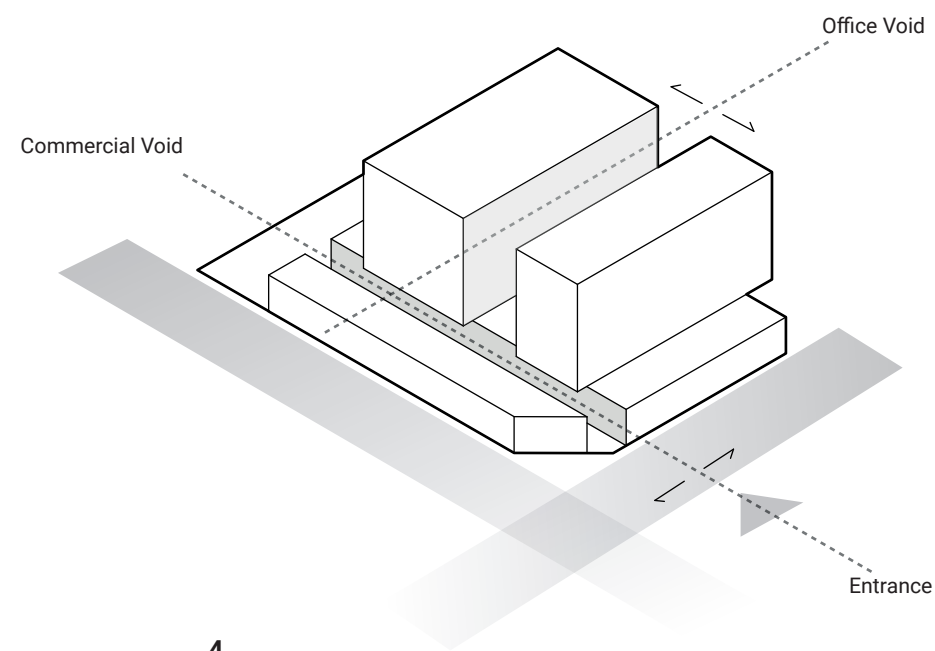
1.



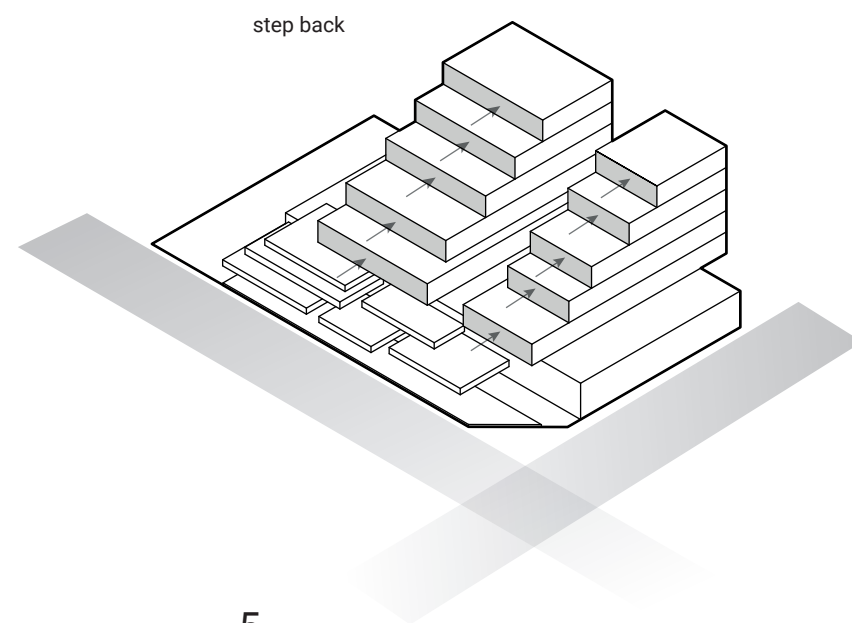
2.



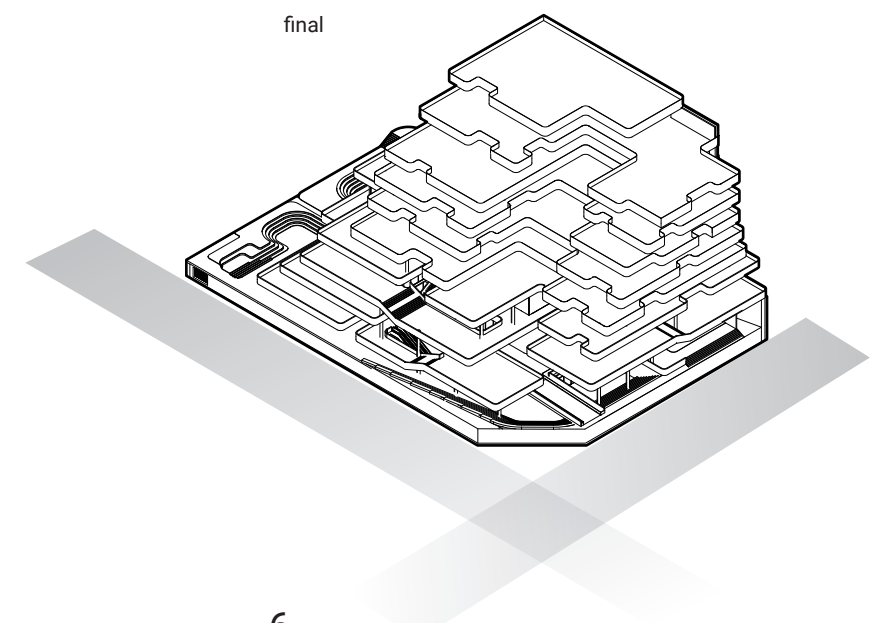
3.



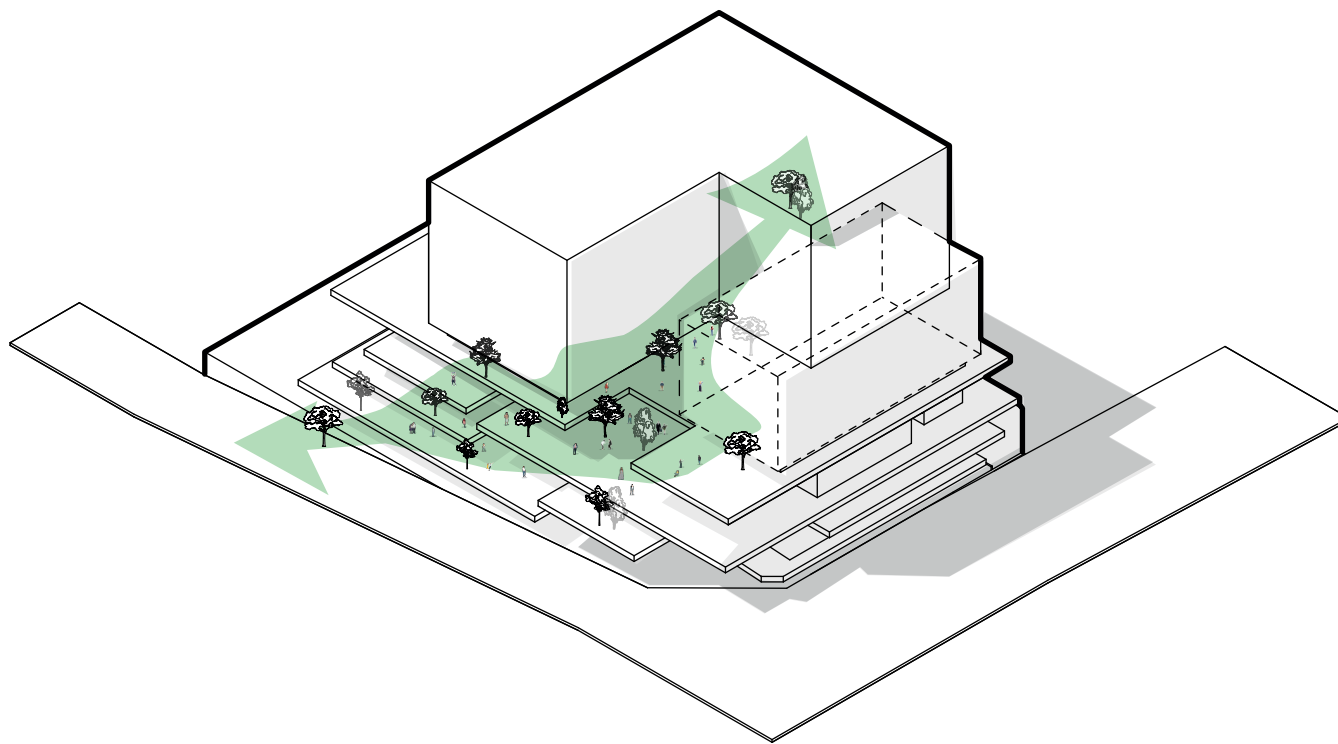
4.



5.

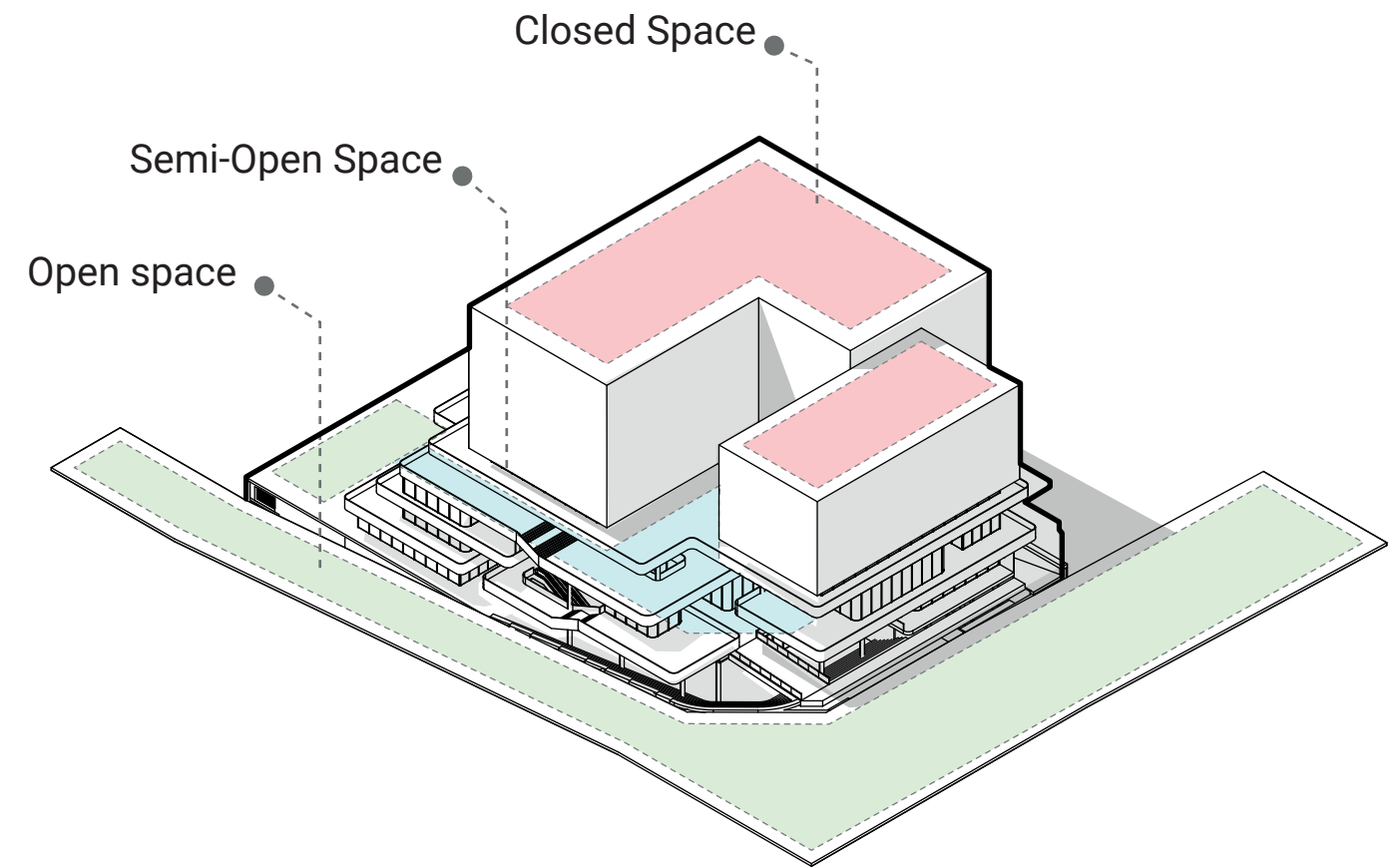


6.



### 1. Connection of Bazaar Paths through Green Terraces

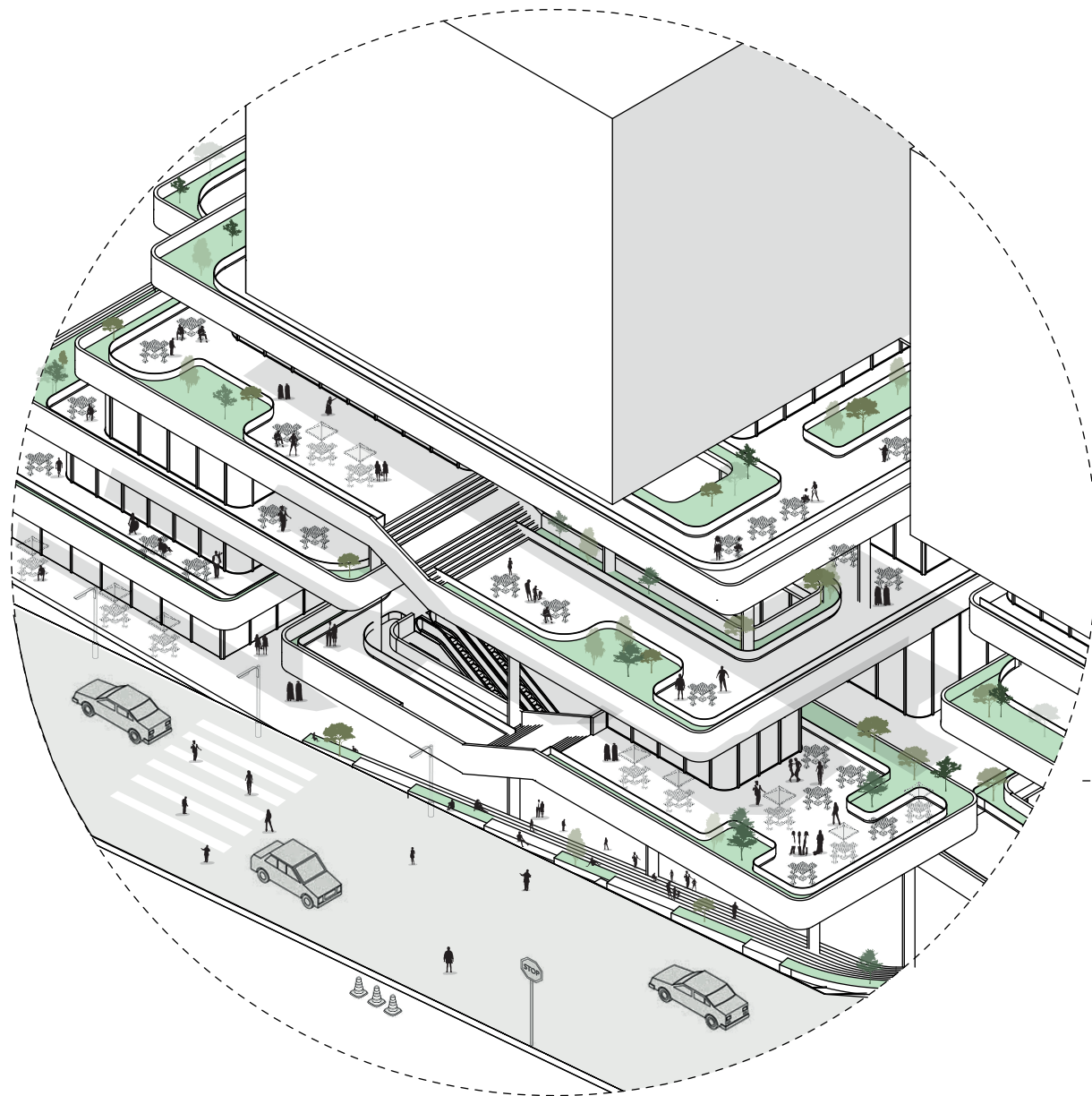
Connecting the linear paths of bazaars via green terraces and spatial sequences, enhancing project functionality and drawing greenery into the built environment.



### 2. Spatial Hierarchy of Open–Semi-Open–Closed

Hierarchical division of space into open, semi-open, and closed environments, fostering spatial transitions, and improving human experience and functional zoning.

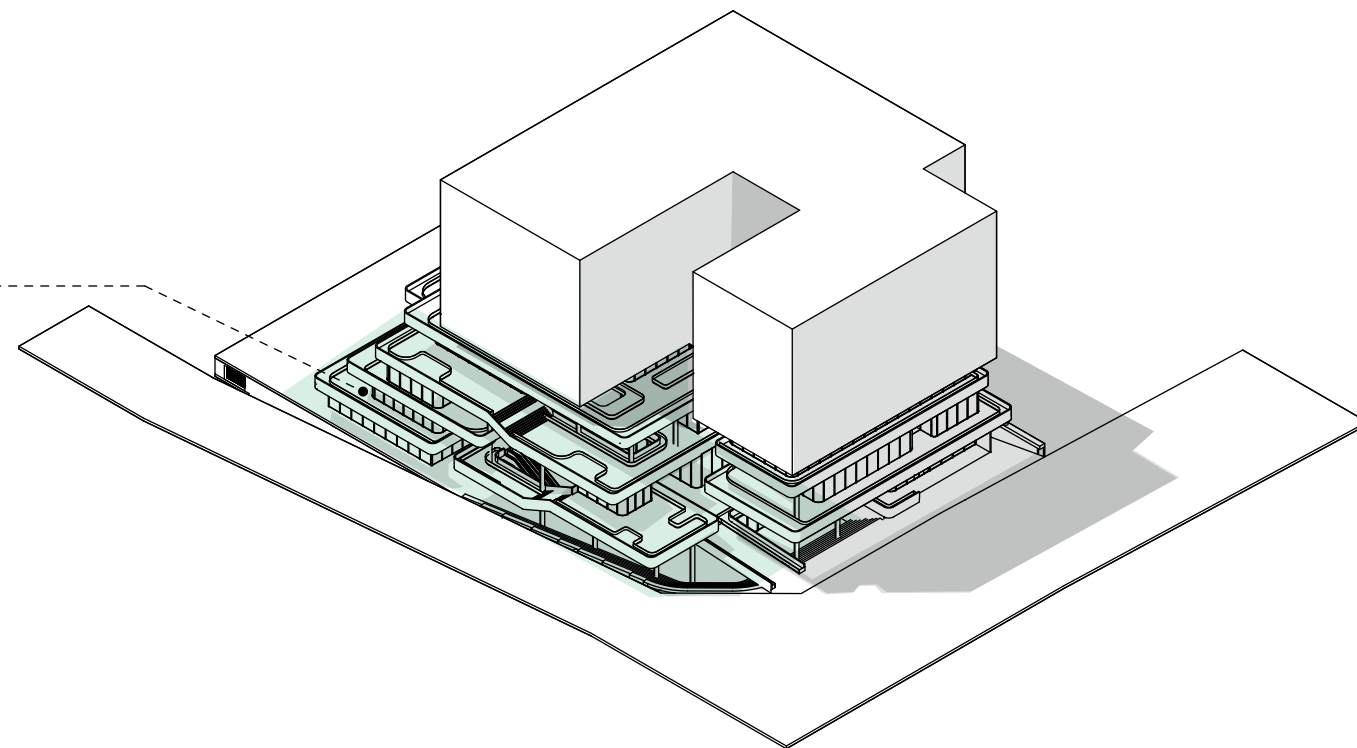


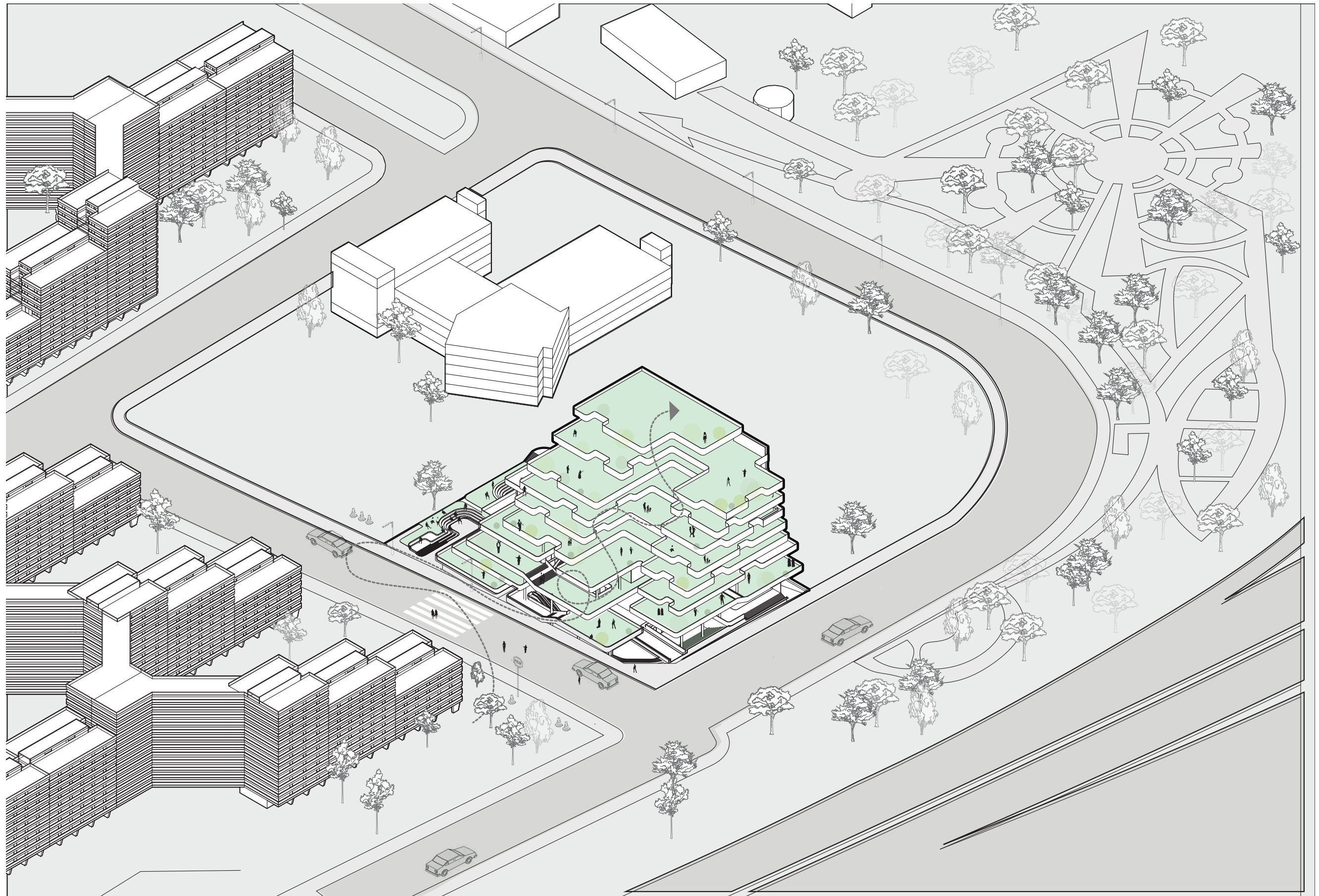


**Vibrant edge of restaurants, green terraces, and public life**  
 A detailed look at the edge reveals a lively sequence of restaurants, food courts, and green pockets, creating a semi-permeable boundary that invites the public into the project and blurs the line between city and architecture through dynamic social and green programming.

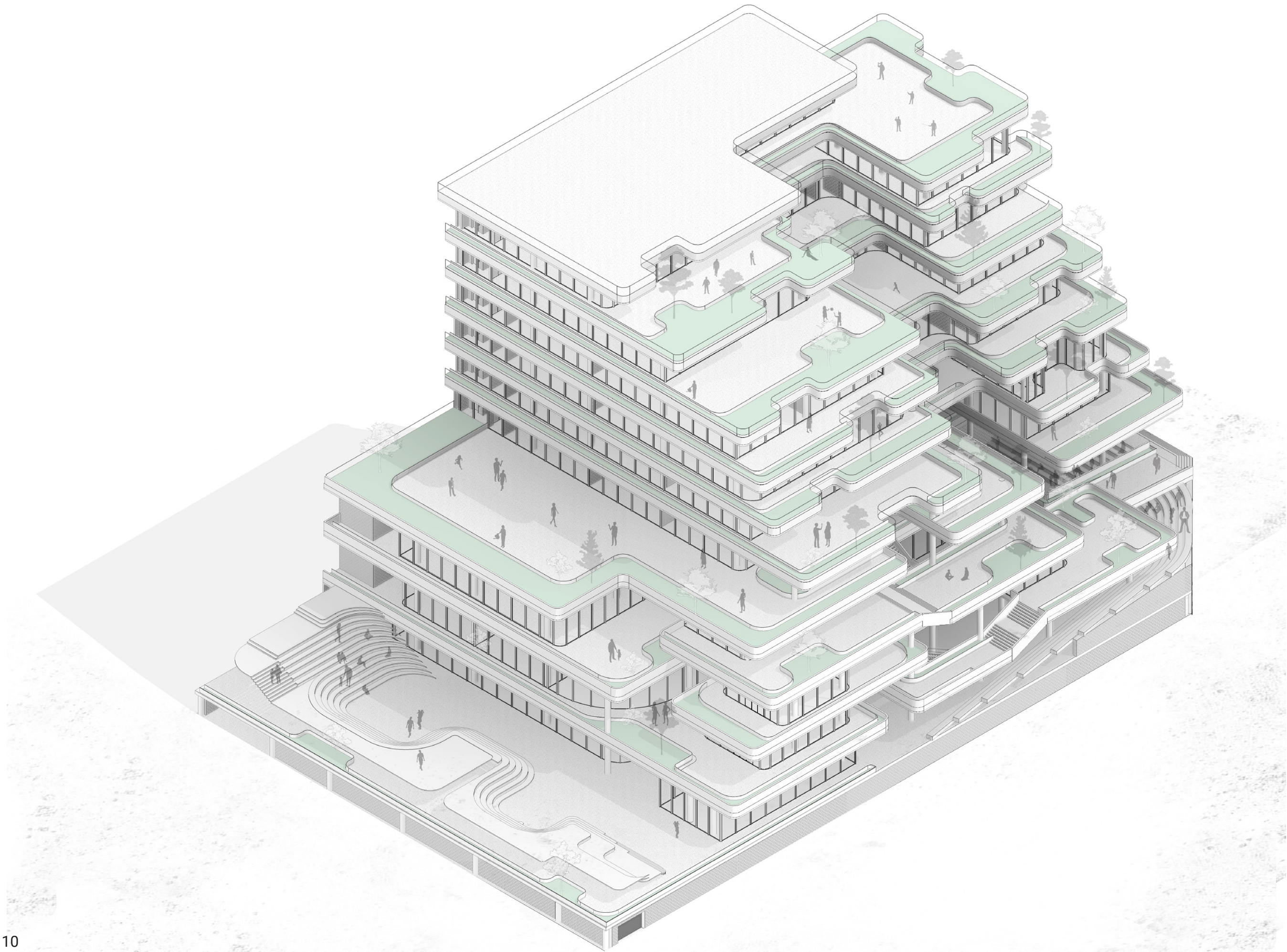
#### **Activated urban edge as interface with Ekbatan**

The project's edge towards Ekbatan is highlighted as a strategic interface, designed to engage the city, extend the project's spatial presence, and function as a green, inviting threshold between the built form and the urban fabric.

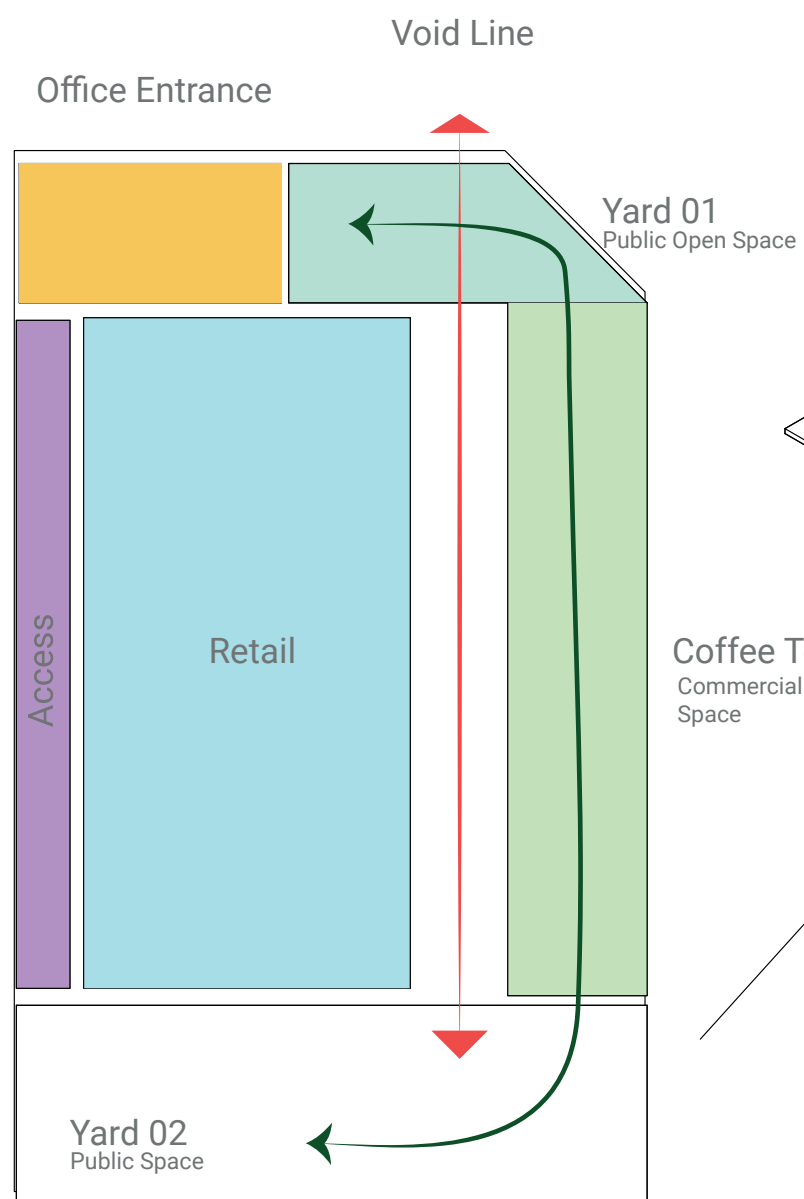




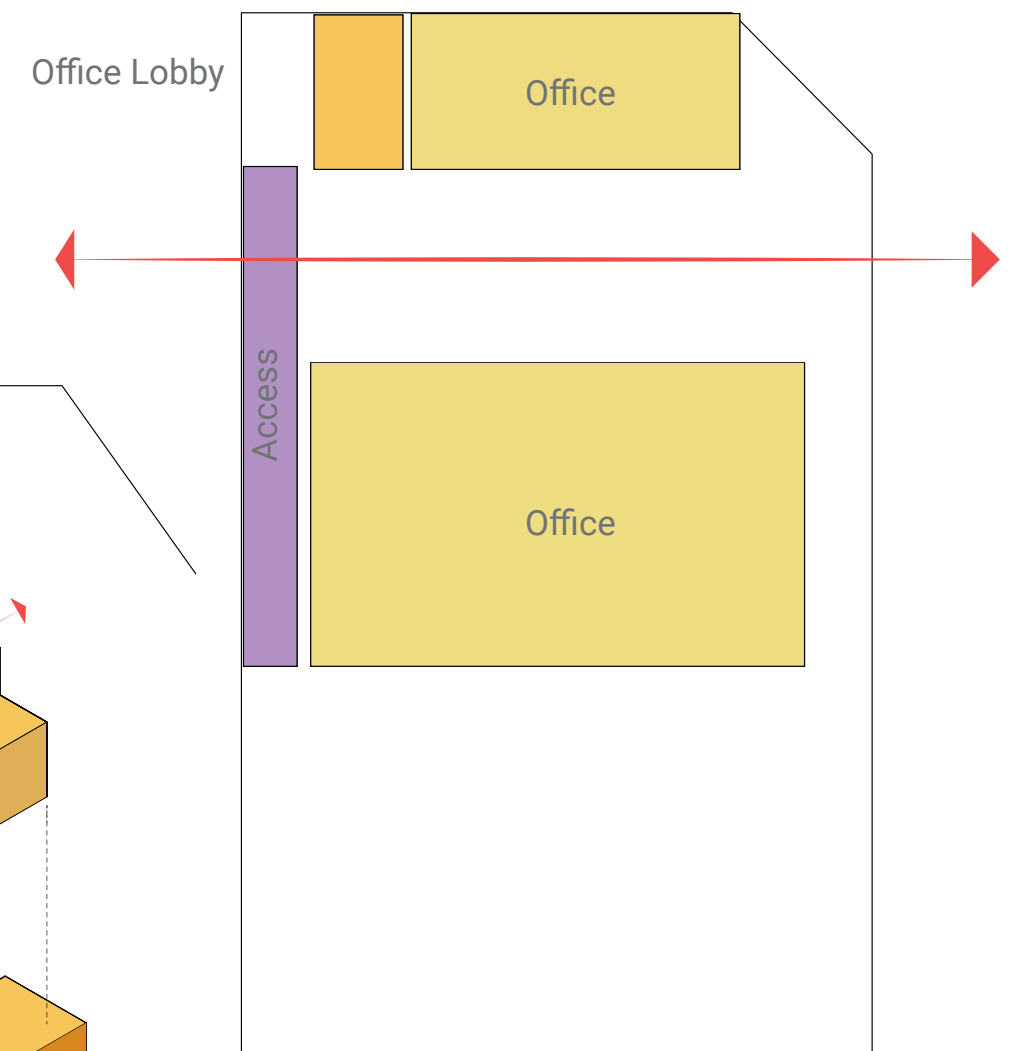
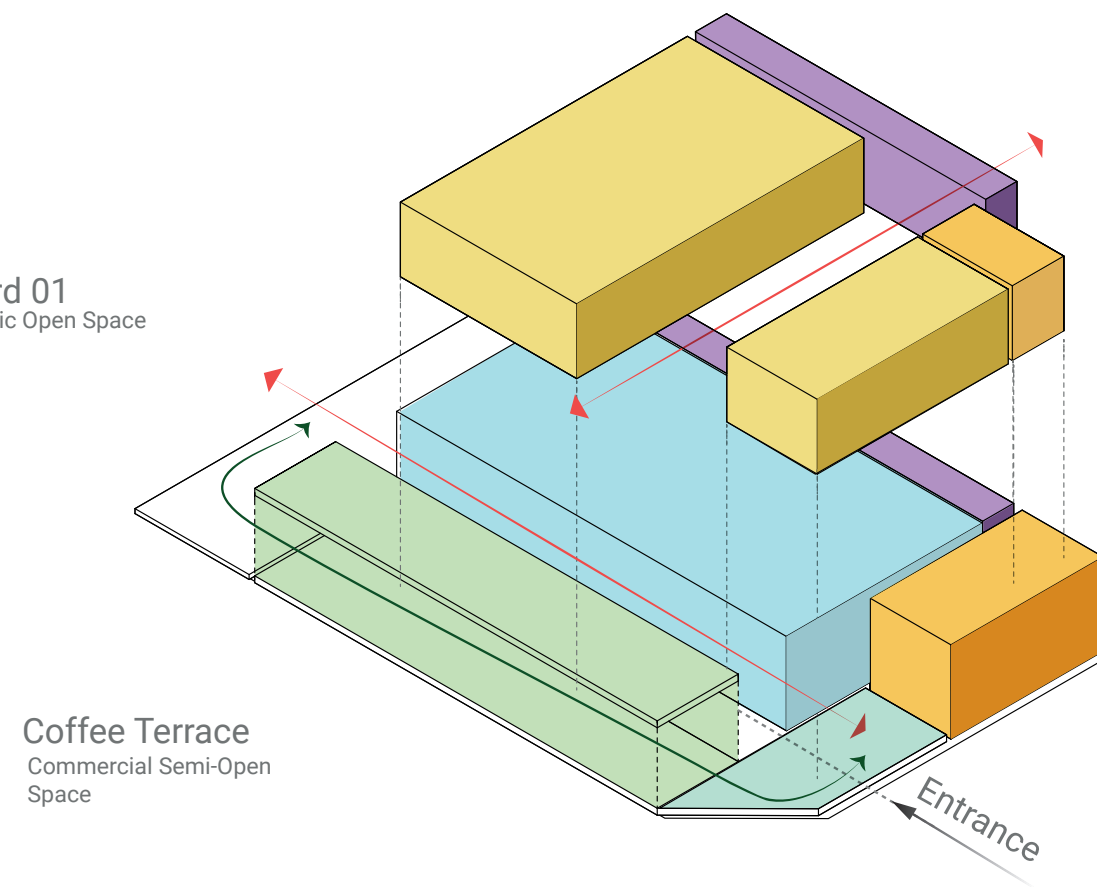




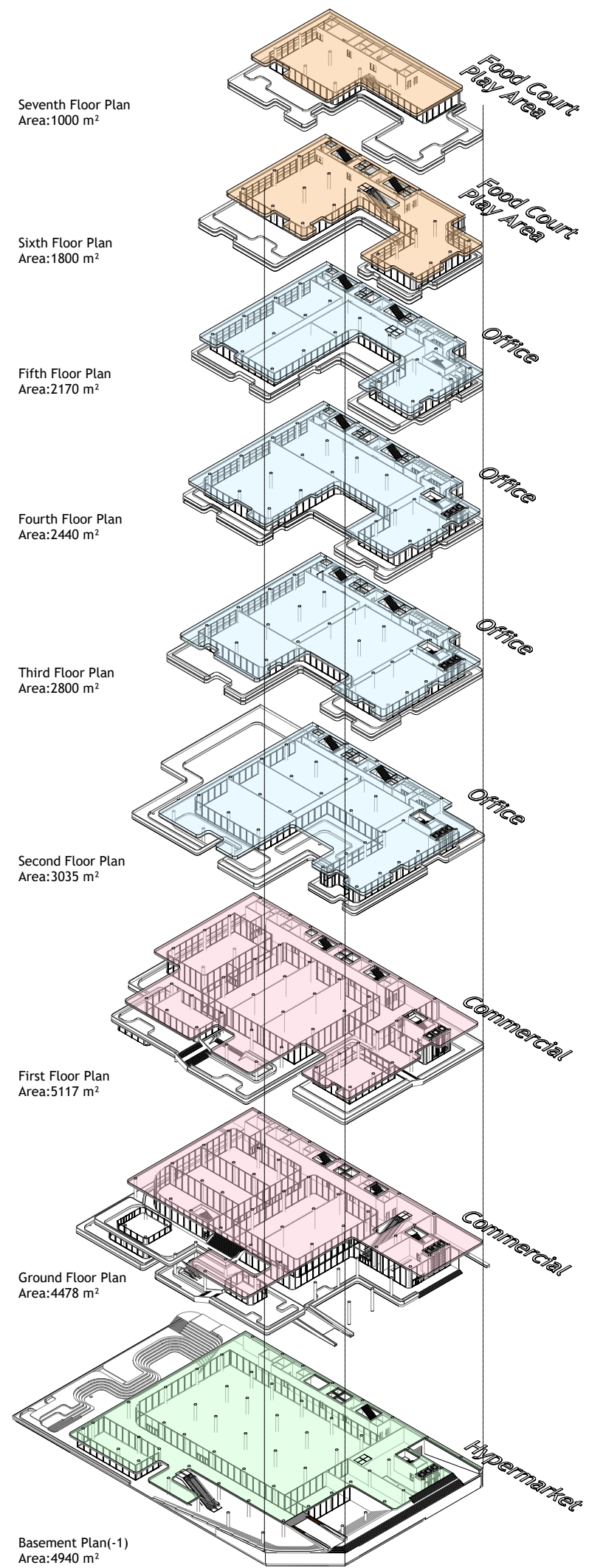


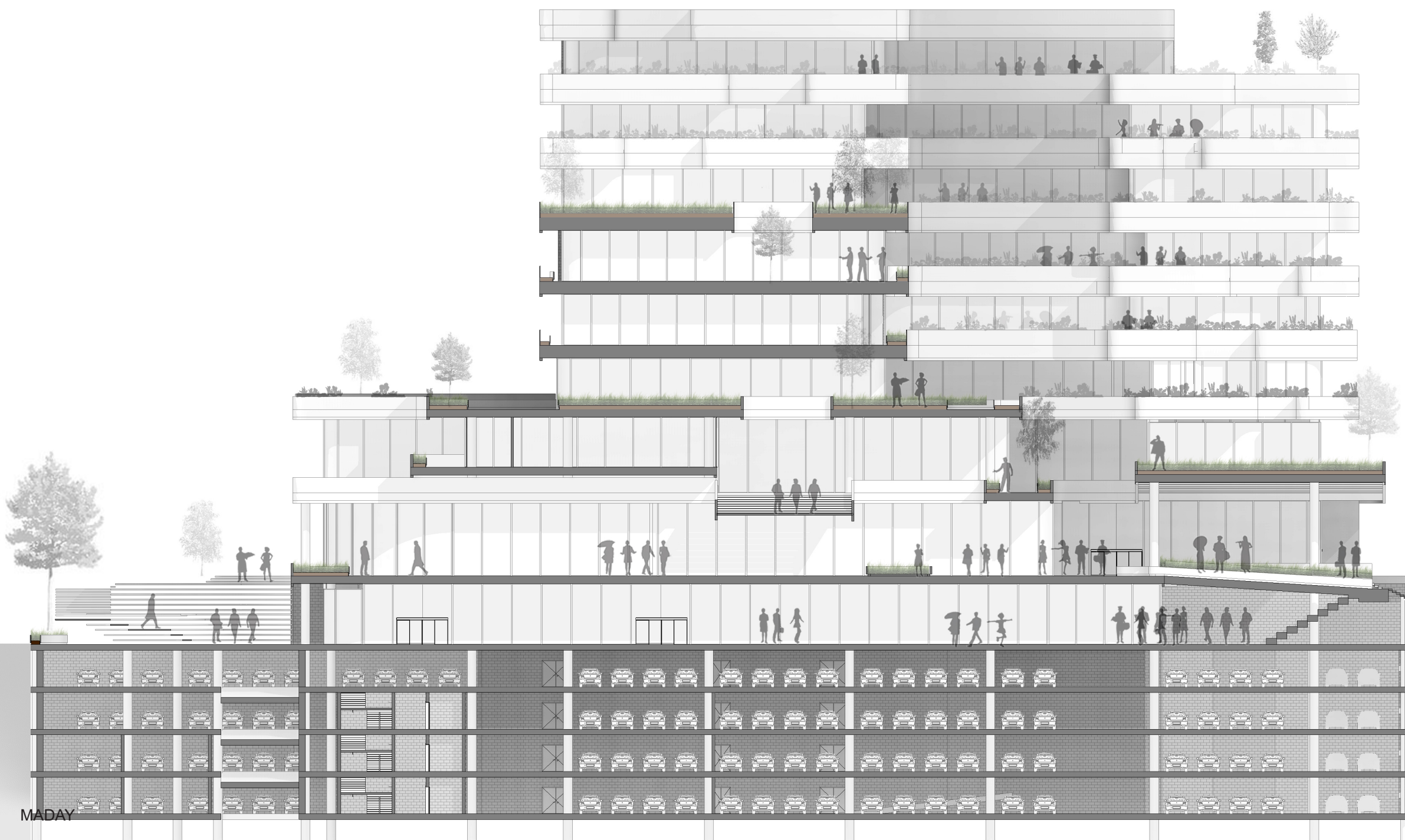


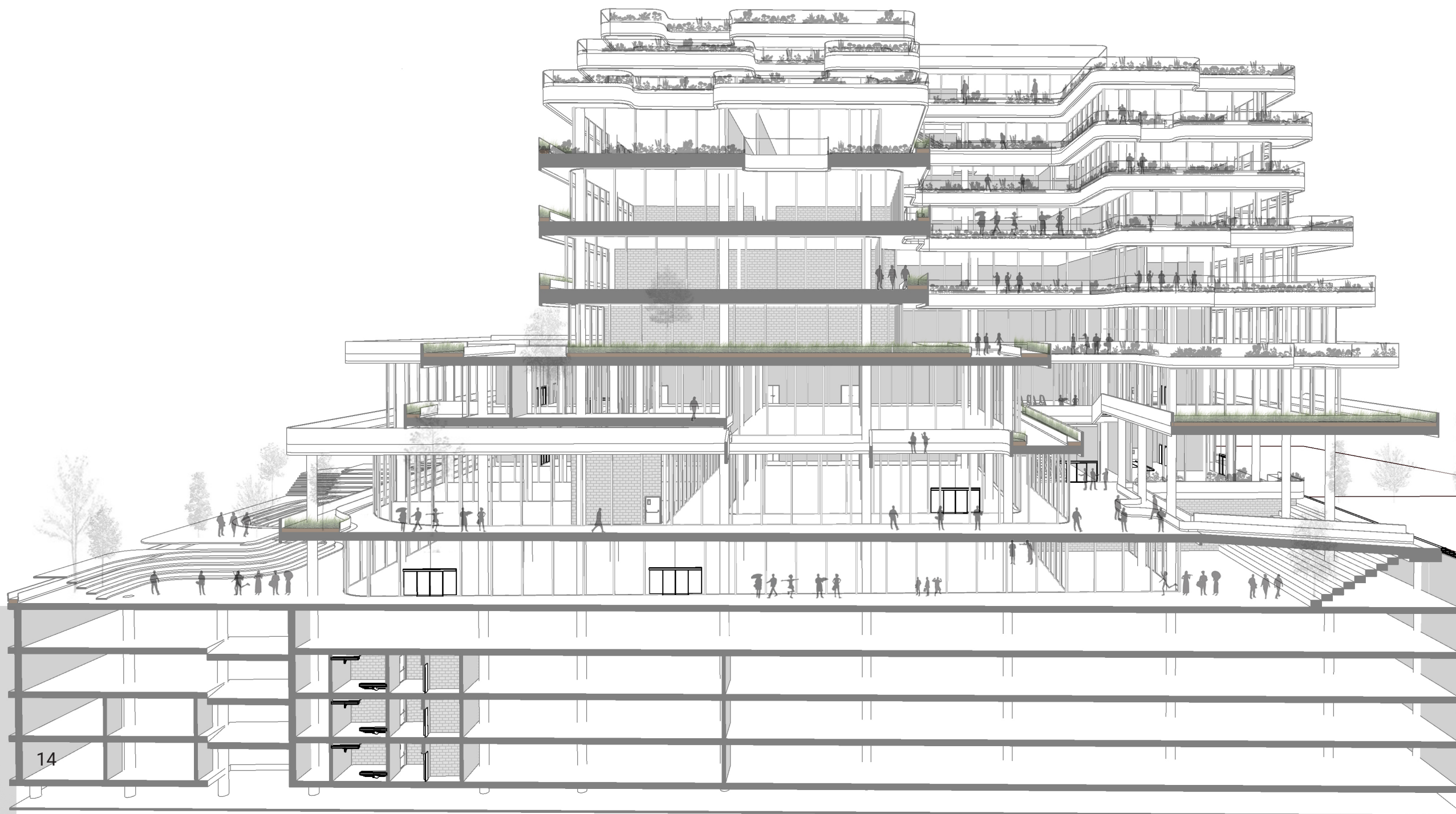
Base Plan  
Commercial Zone



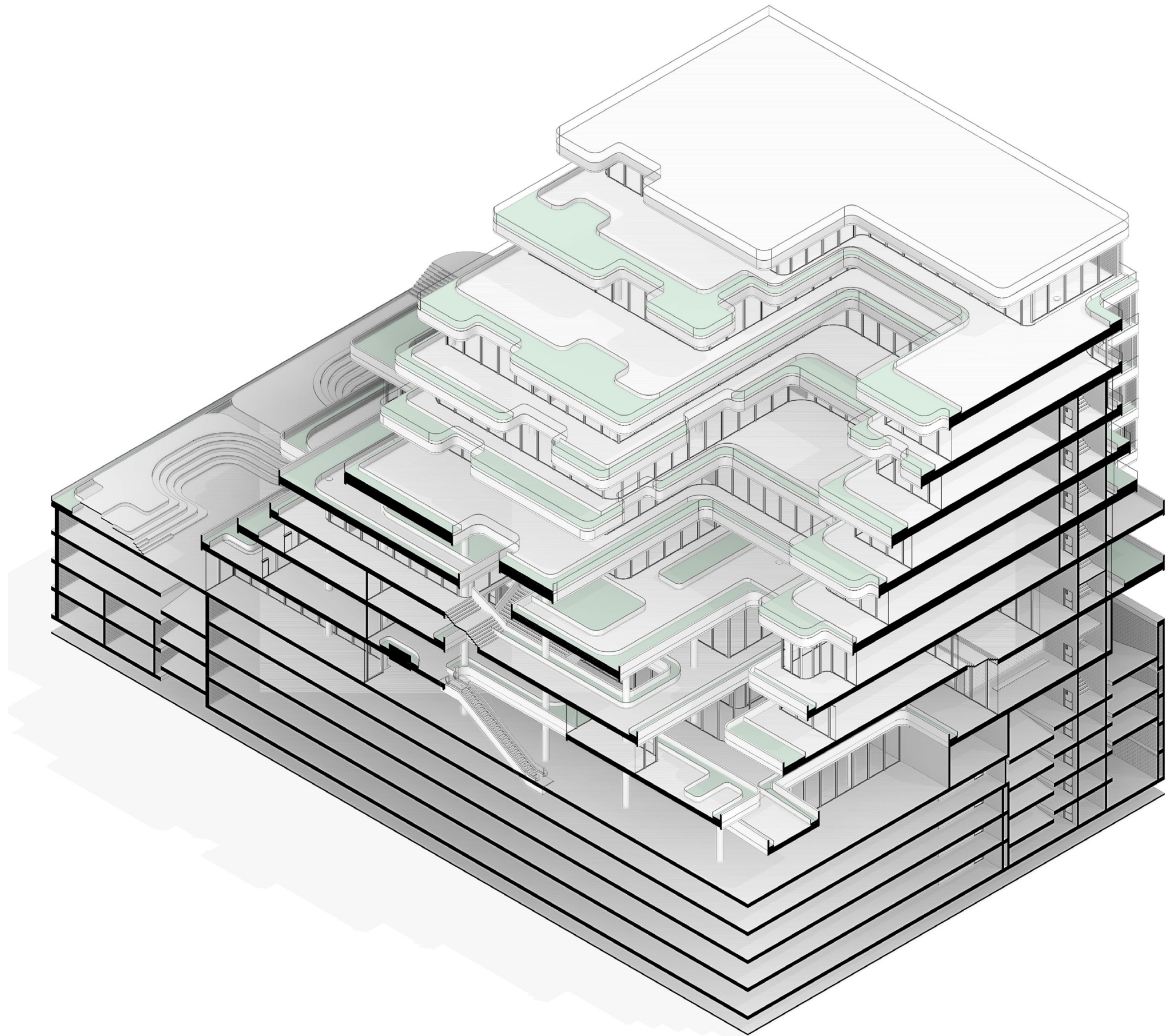
Levels Plan  
Office Zone





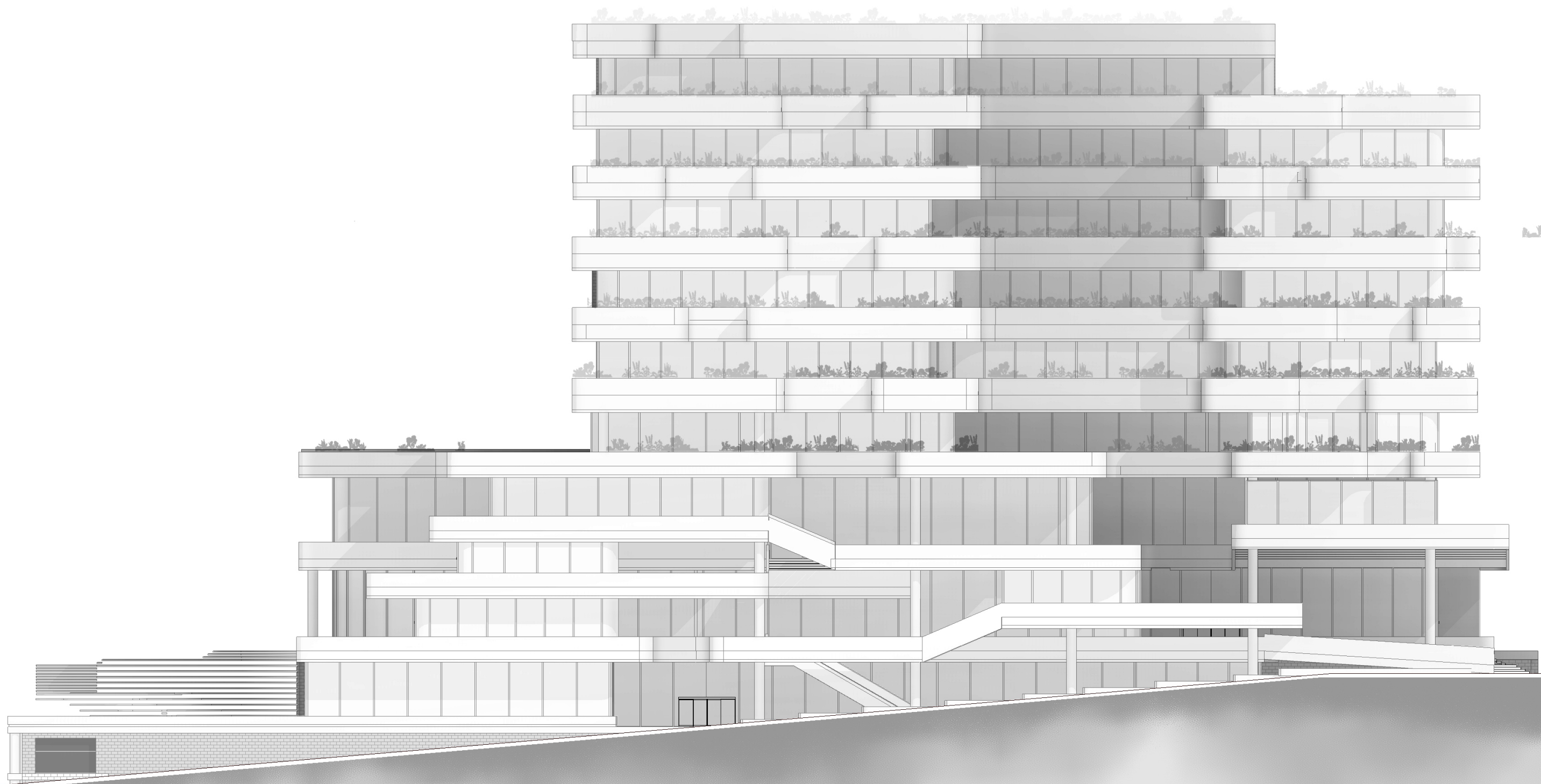












































































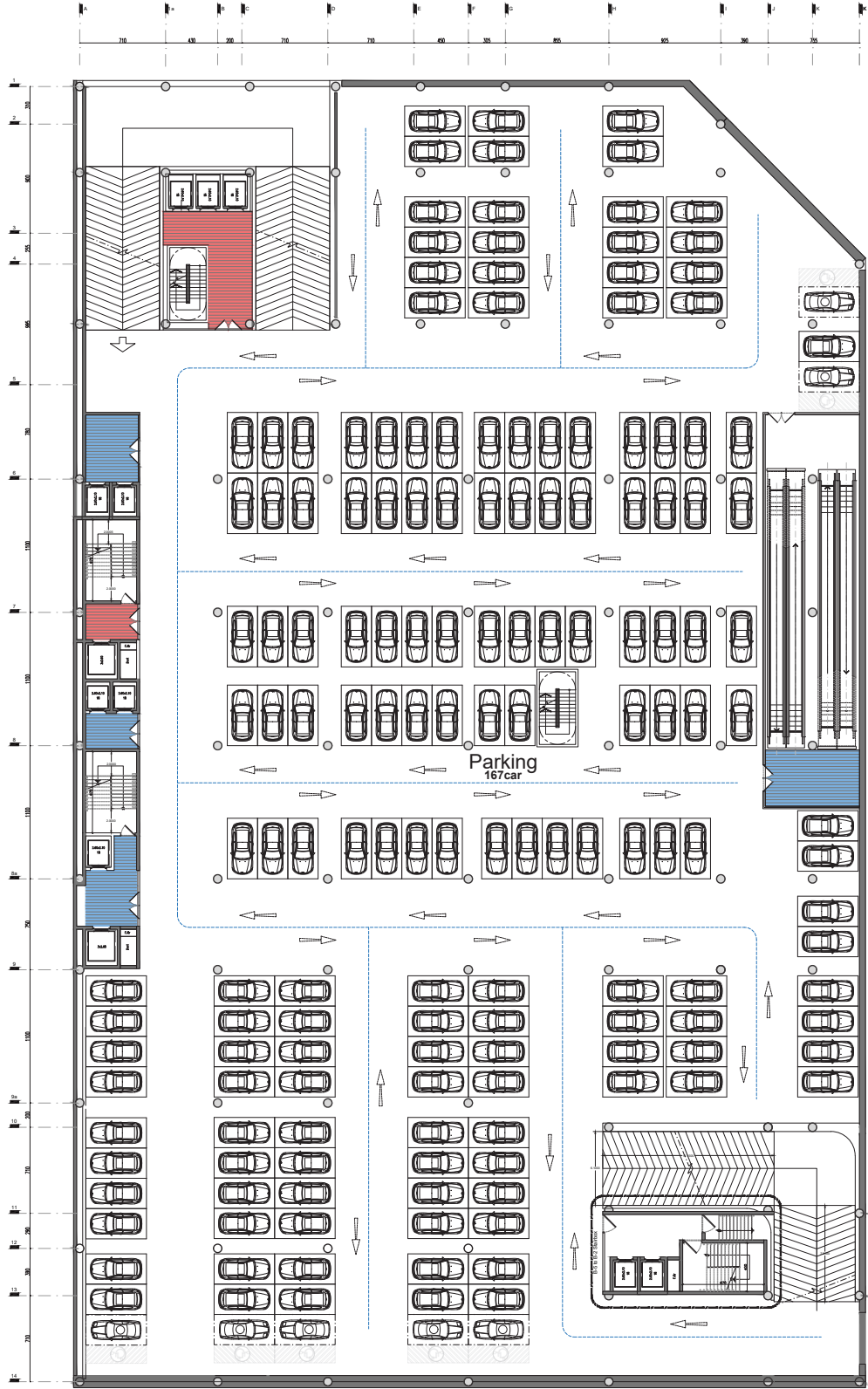




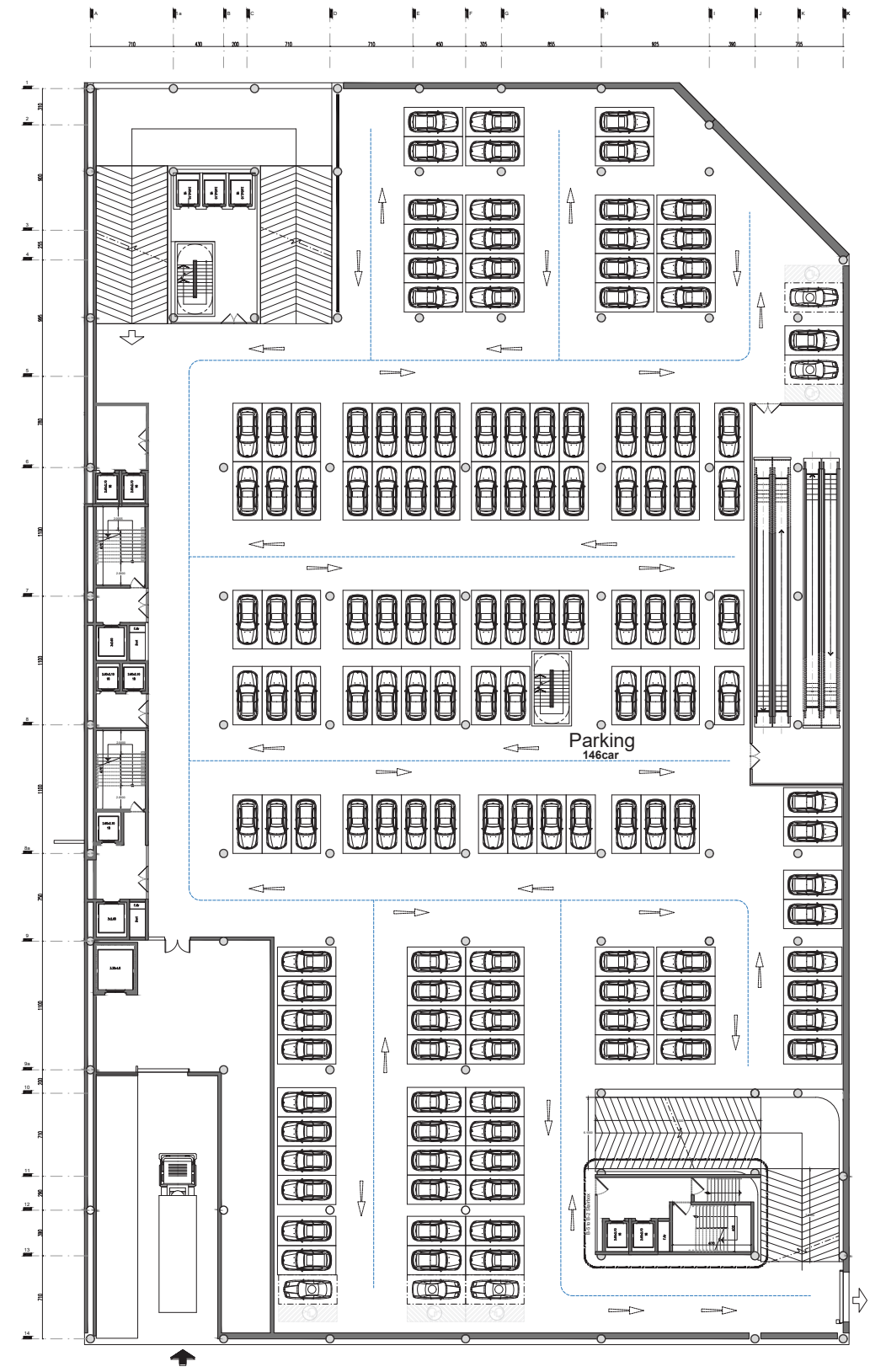




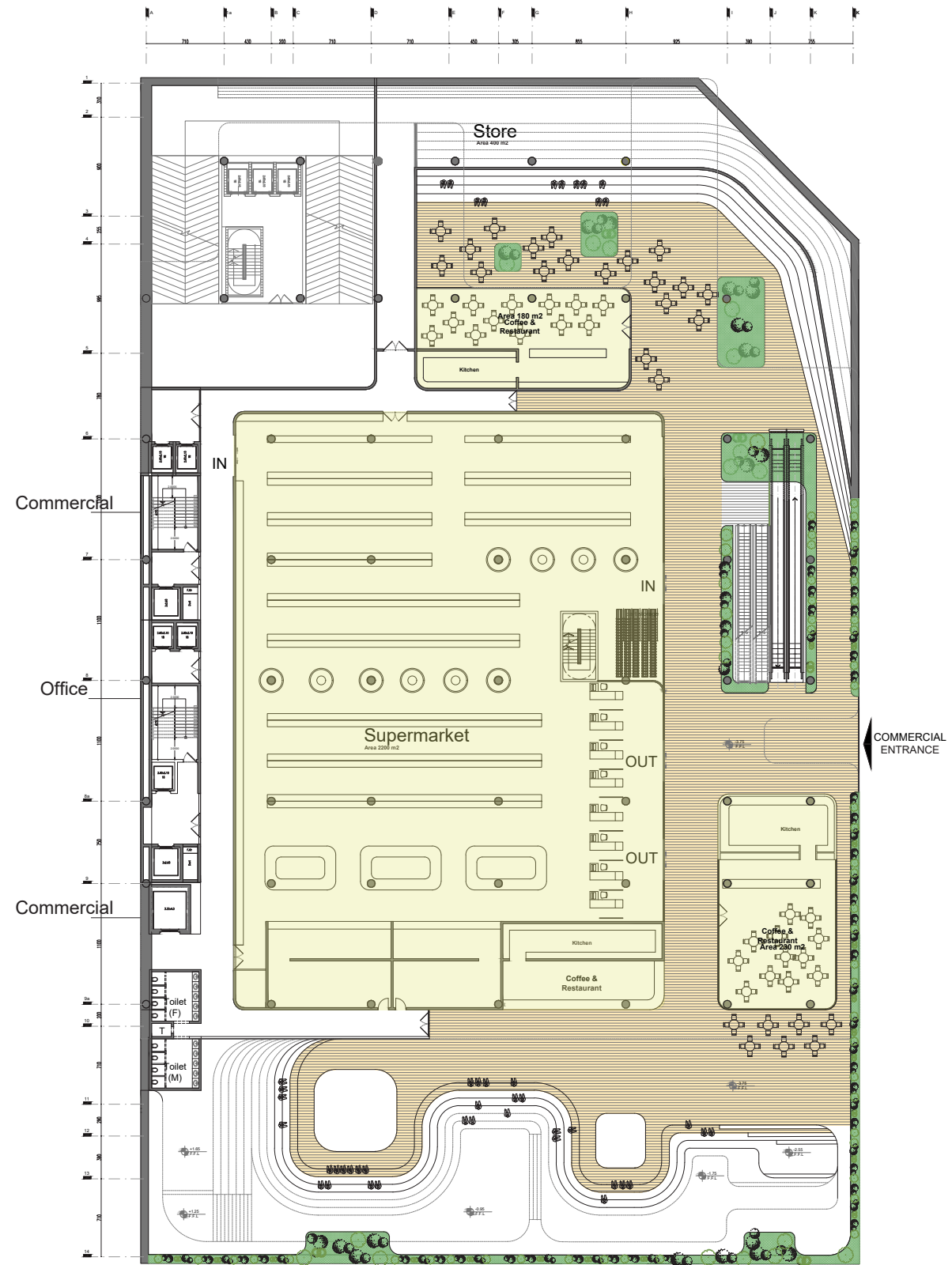










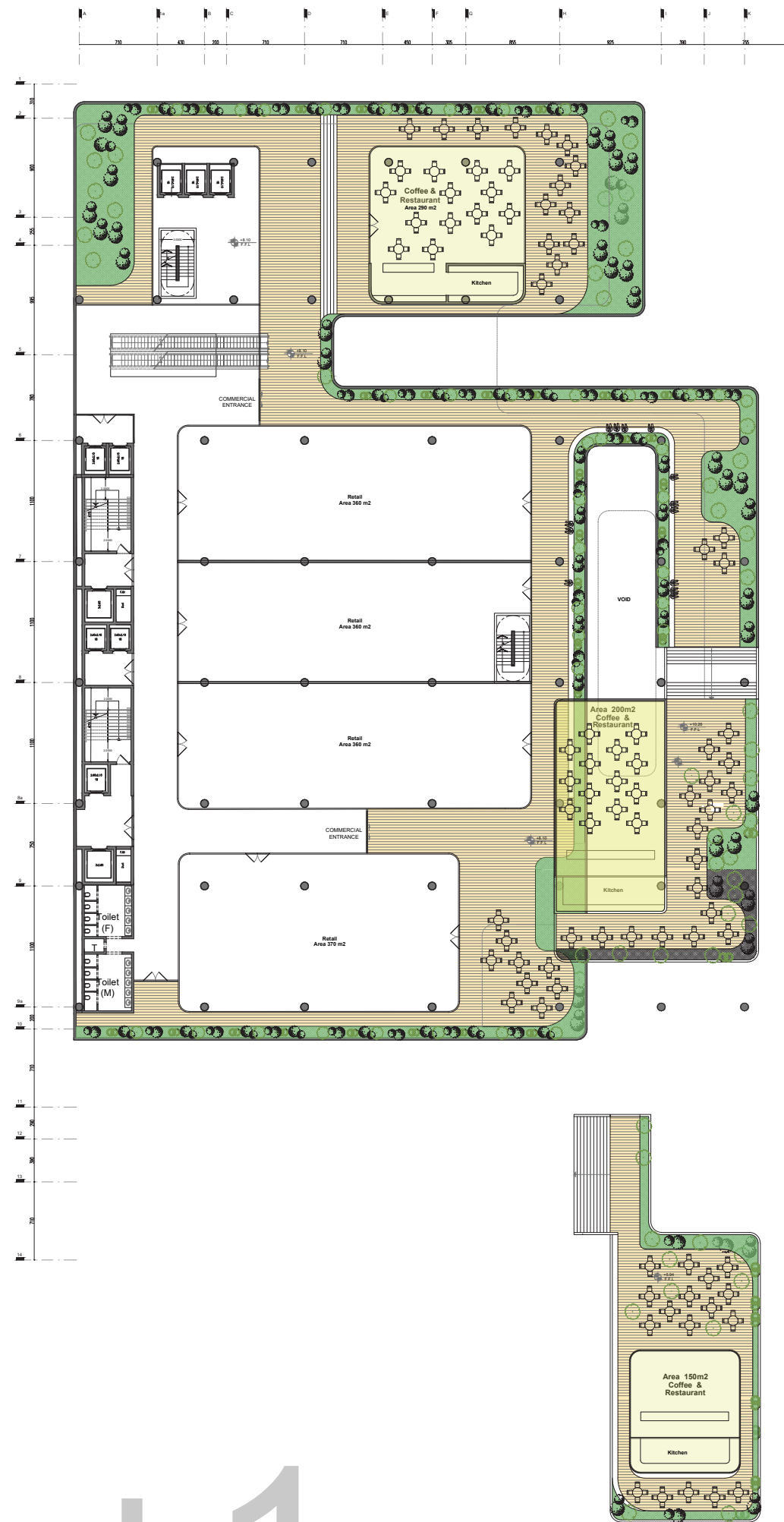






GF





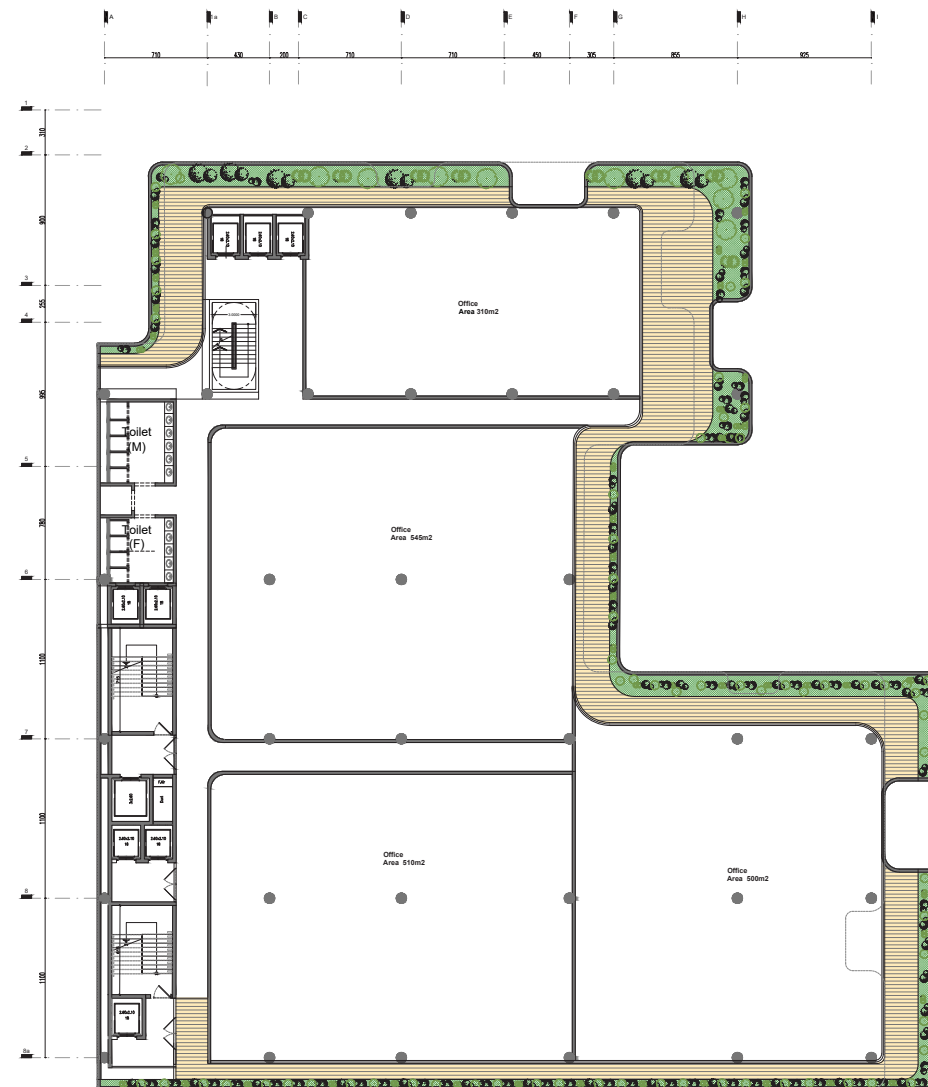
+1





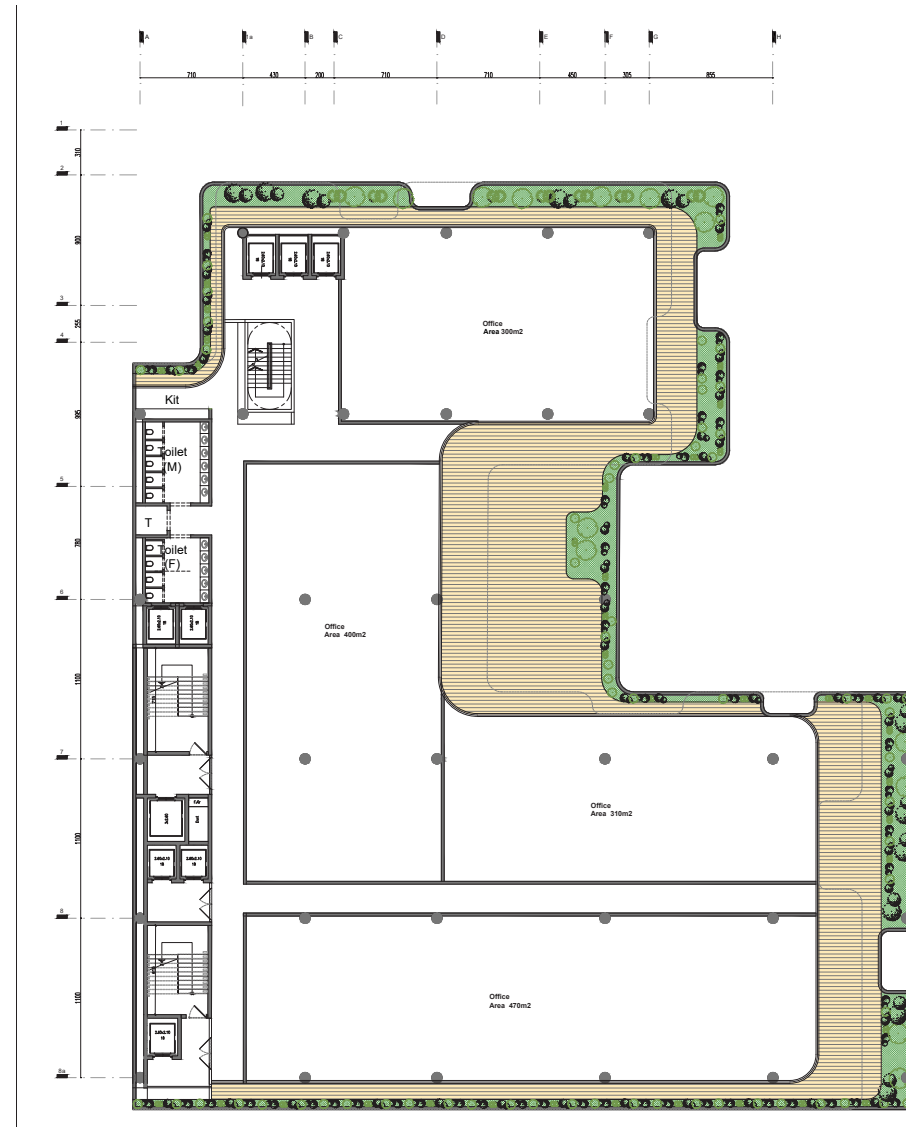
+2





+3





+4

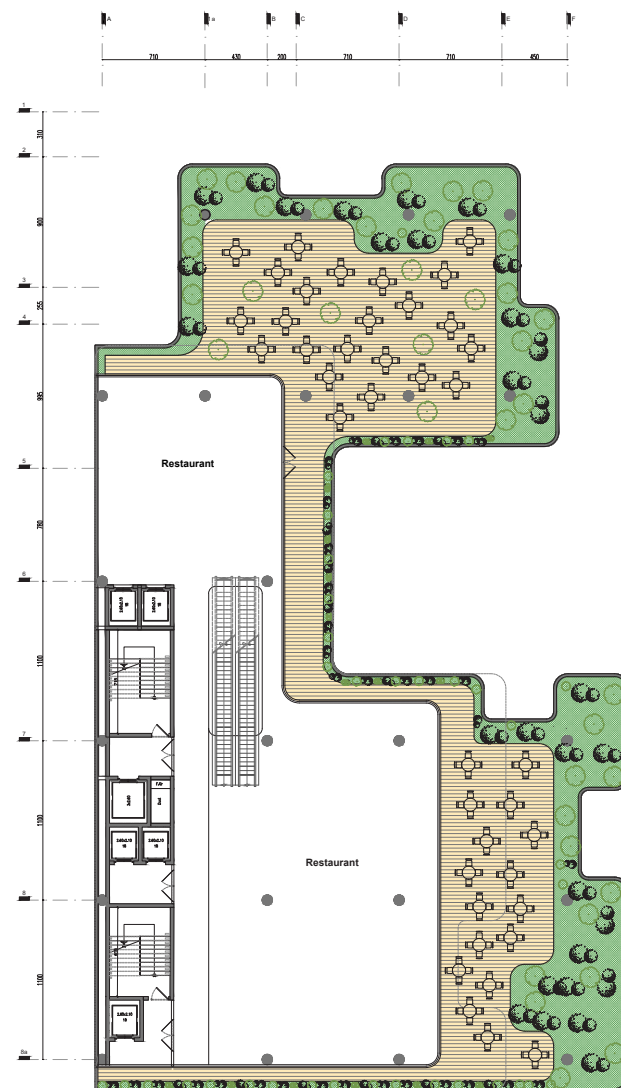












+7