

ARTEMIS

.RESIDENTAIL

in
architectural
design
2025



INTRODUCTION
SITE PLAN, DIAGRAM

INTRODUCTION
PLANS

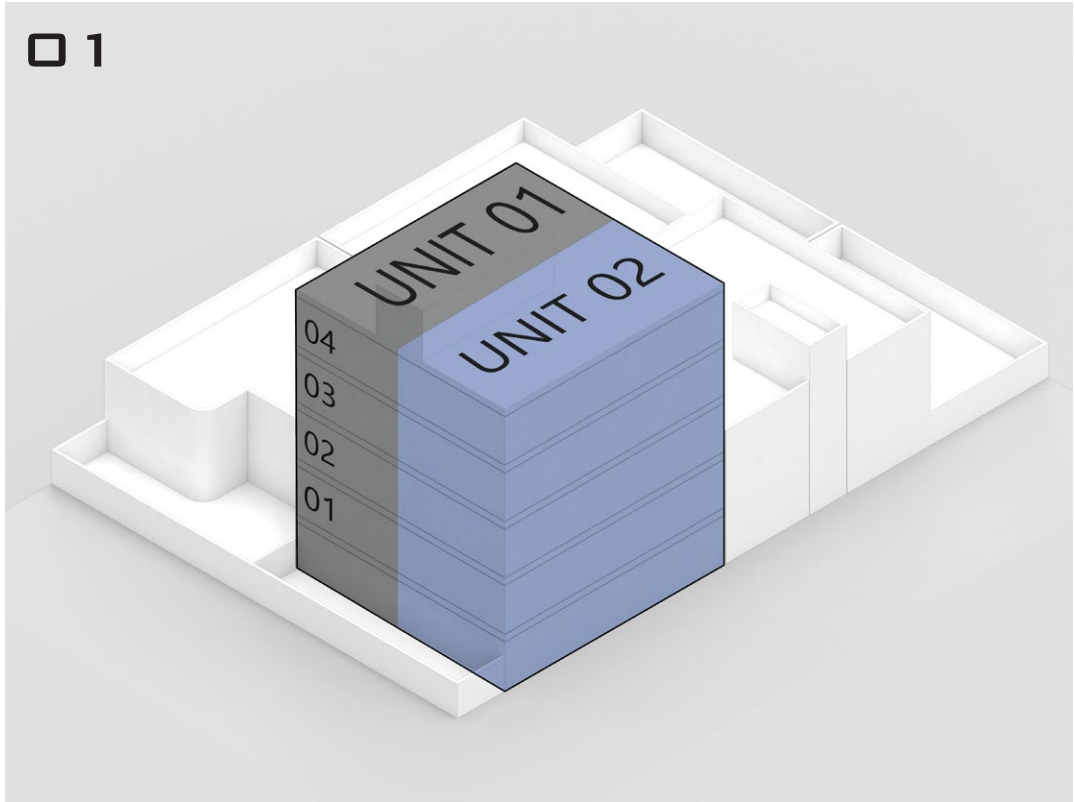
EXTERIOR DESIGN
EXTERIOR VIEWS

INTERIOR DESIGN
RENDER

INTRODUCTION

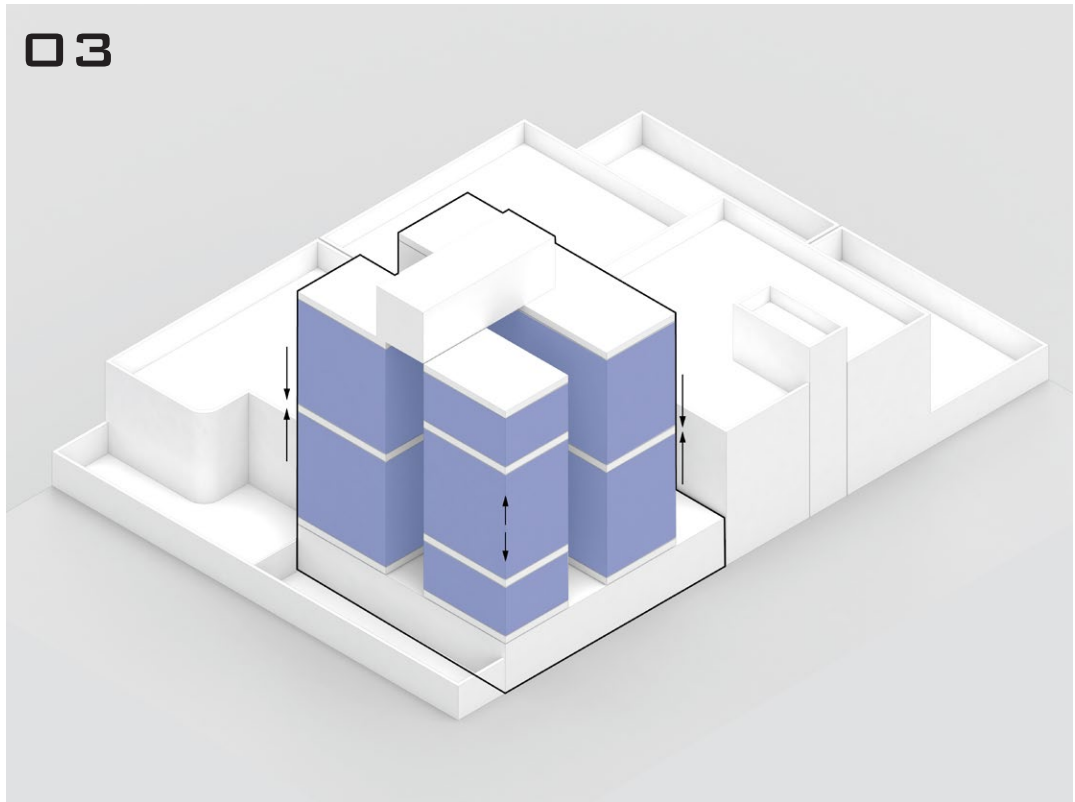
CONCEPT , DIAGRAM

01



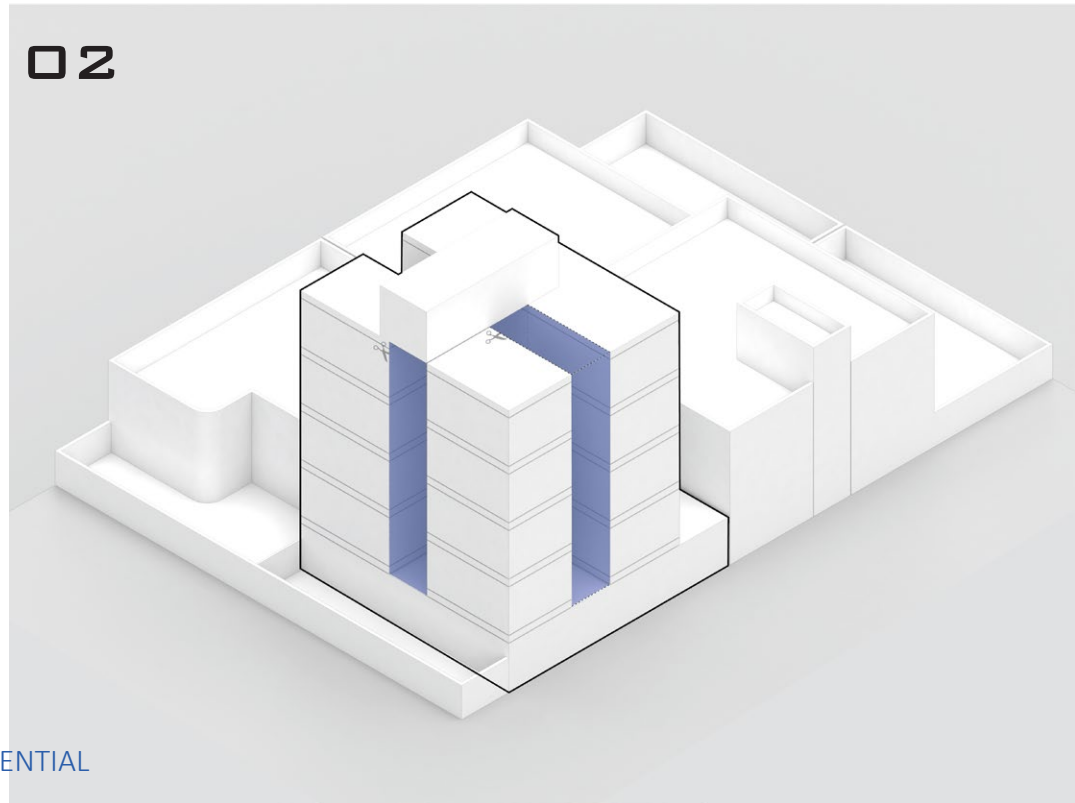
D1- EXISTING MASS
IN THIS INITIAL PHASE, THE BASE MASSING IS GENERATED ACCORDING TO THE EXISTING STRUCTURE. THE BUILDING CONSISTS OF FOUR FLOORS ABOVE A PILOTIS, REPRESENTING THE RAW SHELL OF THE PROJECT. TWO SEPARATE UNITS PER FLOOR ARE SHOWN, SERVING AS THE FOUNDATION FOR THE UPCOMING FAÇADE DESIGN PROCESS.

03



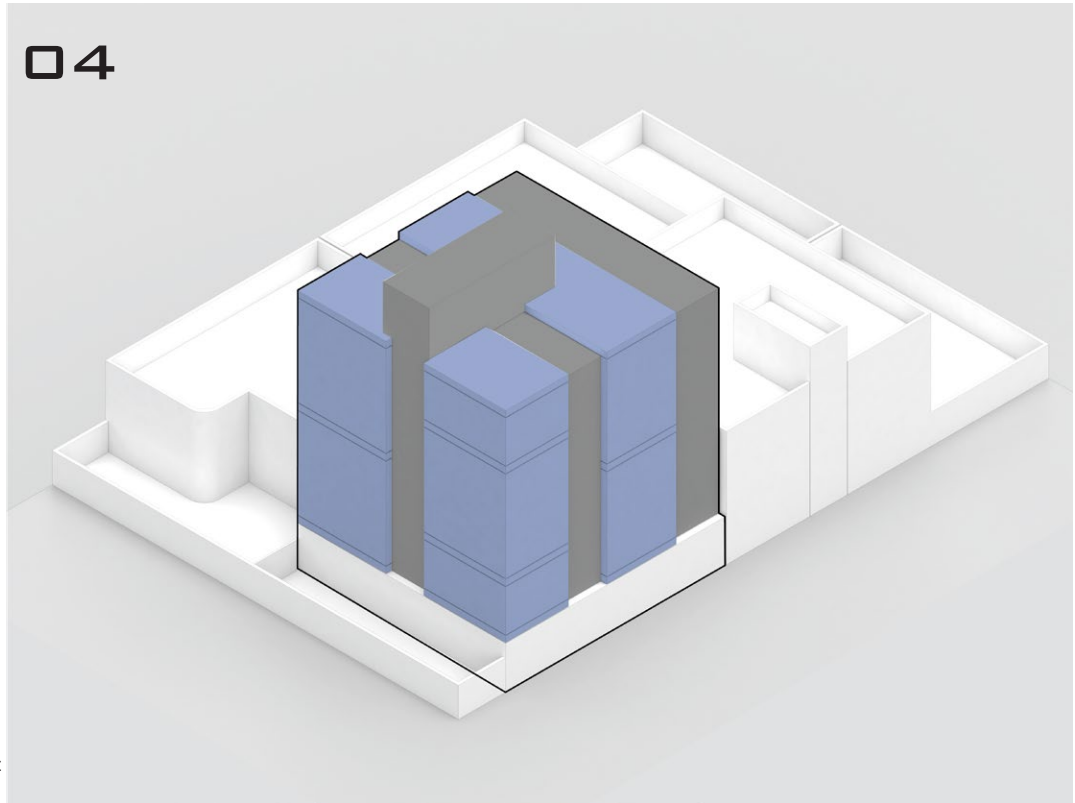
D3- VERTICAL VOLUME SHIFTING
HERE, EACH OF THE THREE SEGMENTED VOLUMES IS VERTICALLY SHIFTED ALONG THE Z-AXIS. THIS MOVEMENT GENERATES SPATIAL DEPTH AND VOIDS WITHIN THE FAÇADE, ESTABLISHING A DYNAMIC ELEVATION PATTERN AND BREAKING THE INITIAL UNIFORMITY.

02

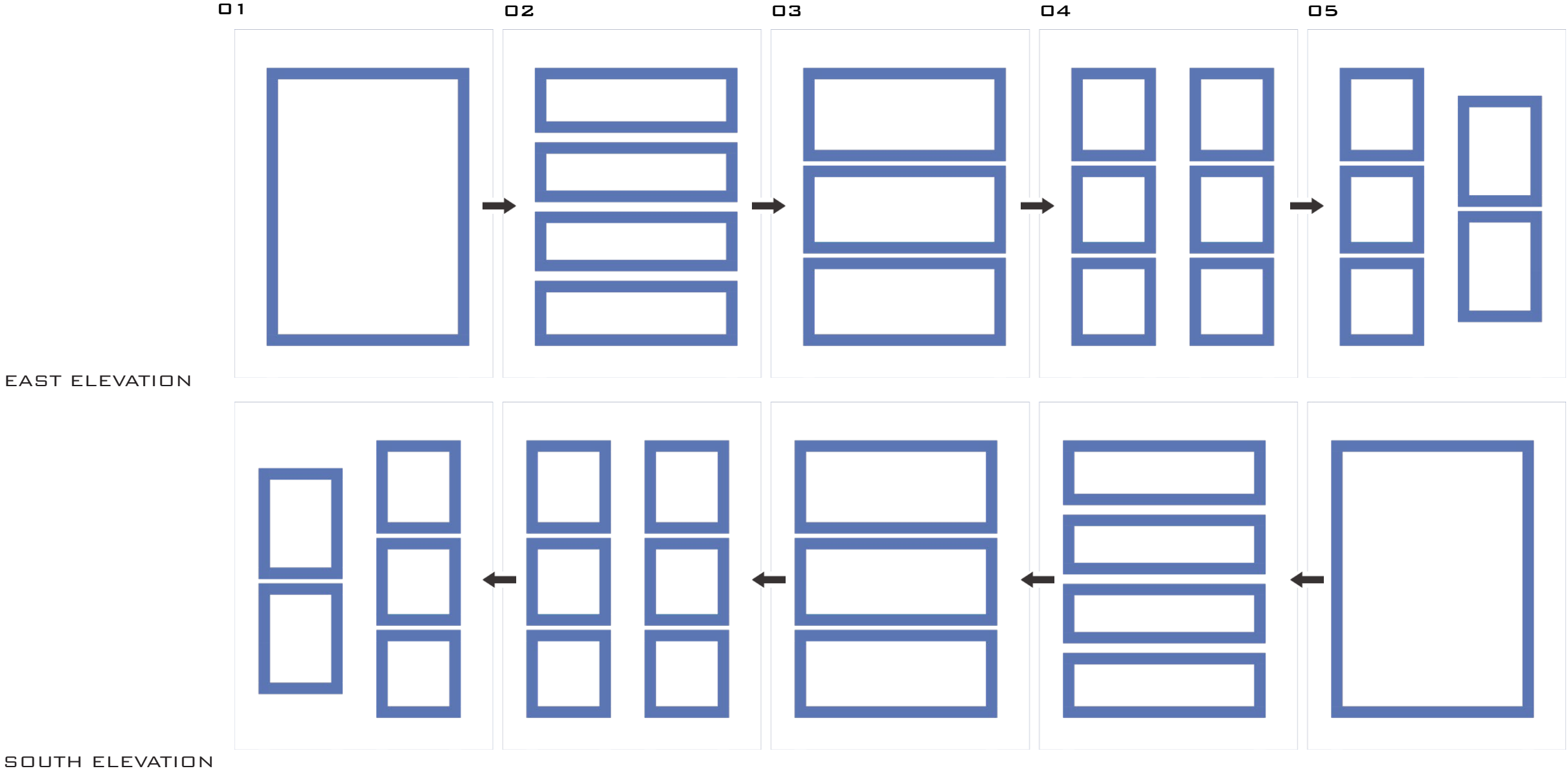


D2- PRIMARY VOLUME SEGMENTATION
IN THIS STEP, CONSIDERING THE CORNER LOT CONDITION WITH TWO EXPOSED FAÇADES (SOUTH AND EAST), THE VOLUME IS SEGMENTED INTO THREE MAIN PARTS. THIS DIVISION ENHANCES THE ARCHITECTURAL LEGIBILITY AND FORMS THE BASIS OF THE FAÇADE DESIGN LOGIC.

04



D4- FINAL FAÇADE STRUCTURING
AT THIS STAGE, THE VOLUMETRIC BOXES ARE ARTICULATED AS EXTRUDED ELEMENTS, WHILE THE TERRACES REMAIN RECESSED. THIS CONTRAST BETWEEN PROJECTION AND INDENTATION FORMS THE STRUCTURAL ESSENCE OF THE FAÇADE AND INTRODUCES A RHYTHM OF LIGHT, SHADOW, AND SPATIAL DYNAMISM ACROSS THE BUILDING ENVELOPE.



1. INITIAL FORM – BIRTH OF SEVEN SQUARES
THE FAÇADE’S MAIN SKIN IS COMPOSED OF SEVEN EQUAL SQUARES. THESE SQUARES WERE GENERATED BASED ON A SYSTEMATIC DIVISION OF THE FAÇADE AND SELECTED AS THE PRIMARY DESIGN MODULES.

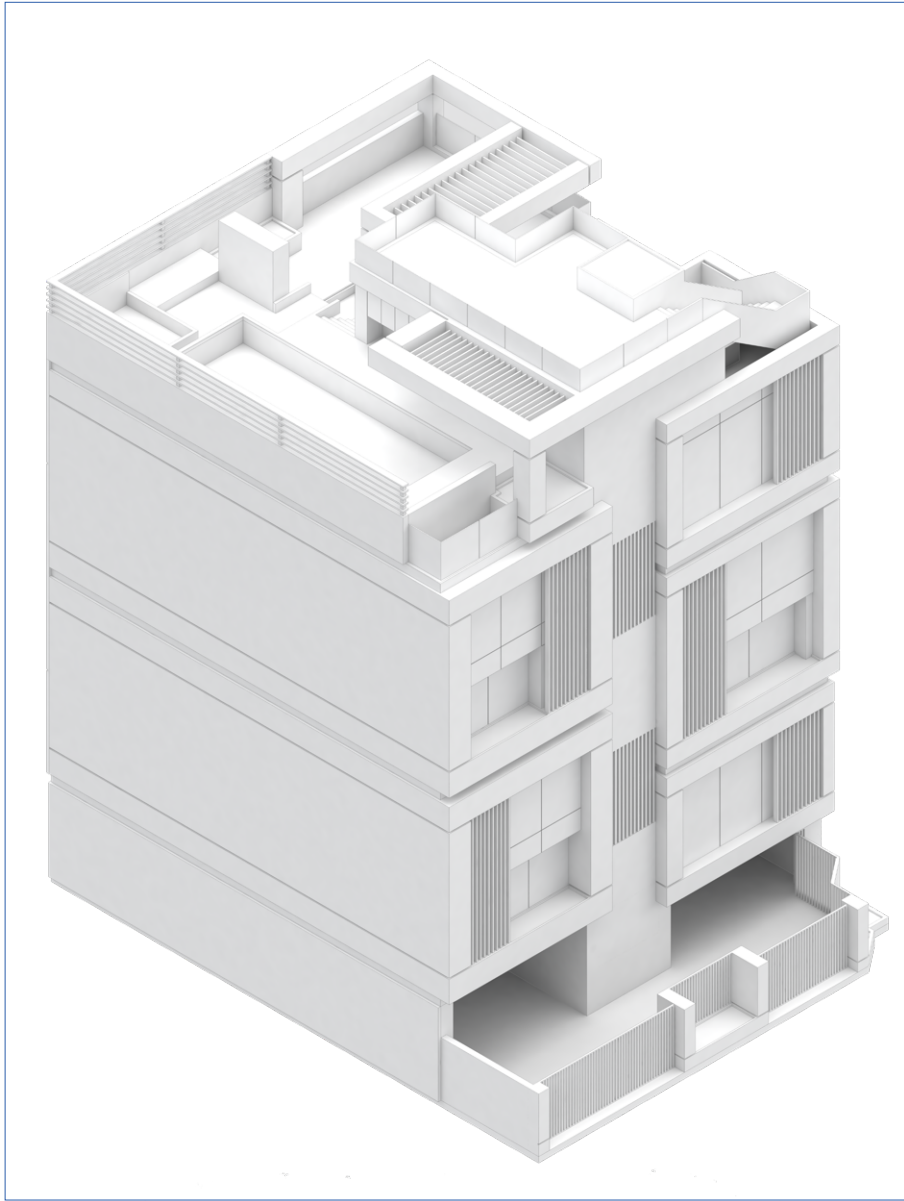
2. HORIZONTAL & VERTICAL DYNAMICS – SHIFTING ALONG X AND Y
EACH SQUARE WAS SHIFTED ALONG THE HORIZONTAL (X) AND VERTICAL (Y) AXES TO CREATE VISUAL DYNAMISM AND AVOID MONOTONY.

3. CREATING DEPTH – SHIFTING ALONG Z
DEPTH WAS INTRODUCED TO THE FAÇADE BY PUSHING AND PULLING THE SQUARES ALONG THE Z AXIS, ENHANCING SHADOWS AND THE THREE-DIMENSIONAL CHARACTER OF THE BUILDING.

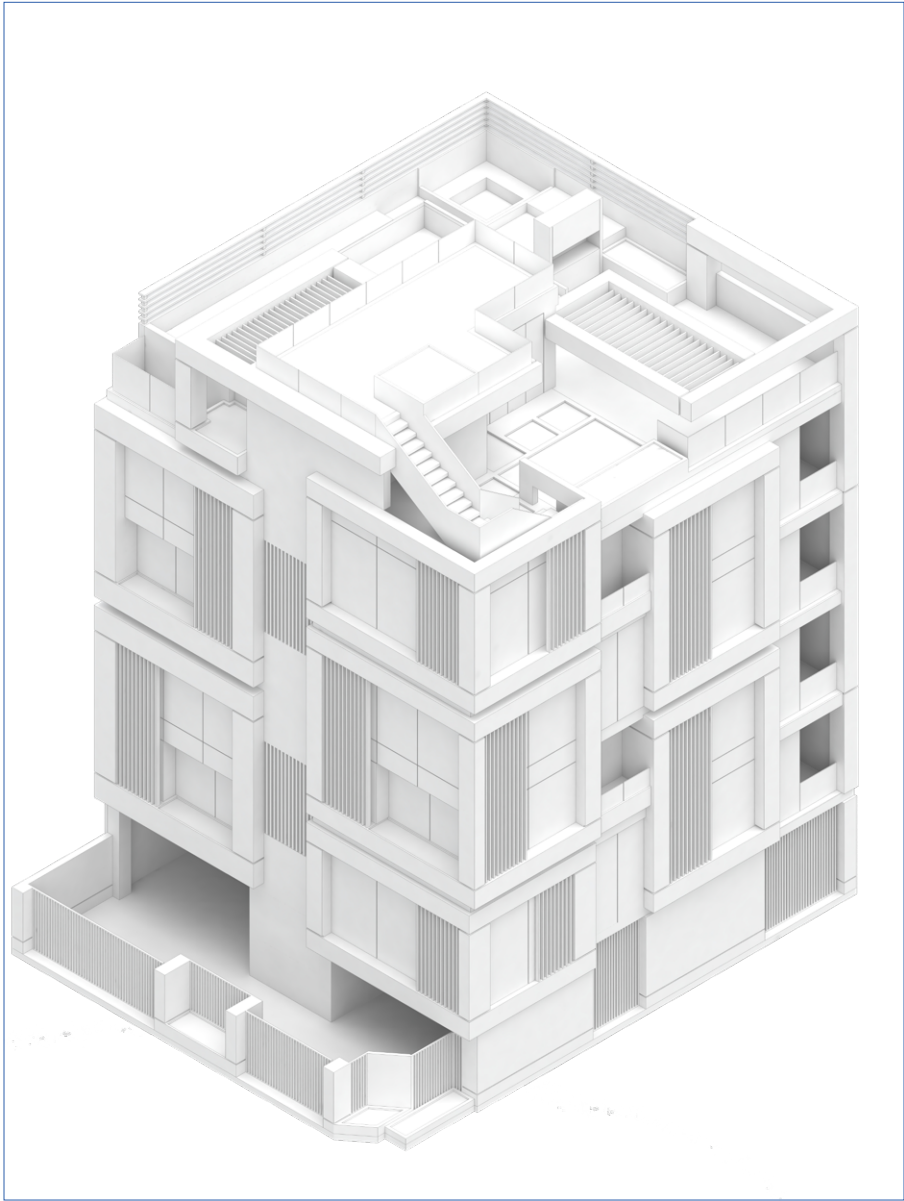
4. BREATHING FAÇADE – ADDING TERRACES AND GREENERY
OPEN TERRACES WERE INTEGRATED WITHIN THE SQUARES, COMPLEMENTED BY PLANTERS AND VERTICAL GREENERY TO ESTABLISH A STRONG CONNECTION WITH NATURE. THIS GREENERY ENHANCES THE VISUAL QUALITY WHILE IMPROVING ENVIRONMENTAL PERFORMANCE.

5. FINAL IDENTITY – DETAILS & MATERIALS
WHITE MARBLE STONE WAS USED AS THE MAIN CLADDING, COMPLEMENTED BY SCREWED BLACK GRANITE IN SECONDARY PARTS TO CREATE A LUXURIOUS MODERN CONTRAST. HIDDEN LIGHTING DETAILS HIGHLIGHT THE VOLUMETRIC SHIFTS AT NIGHT

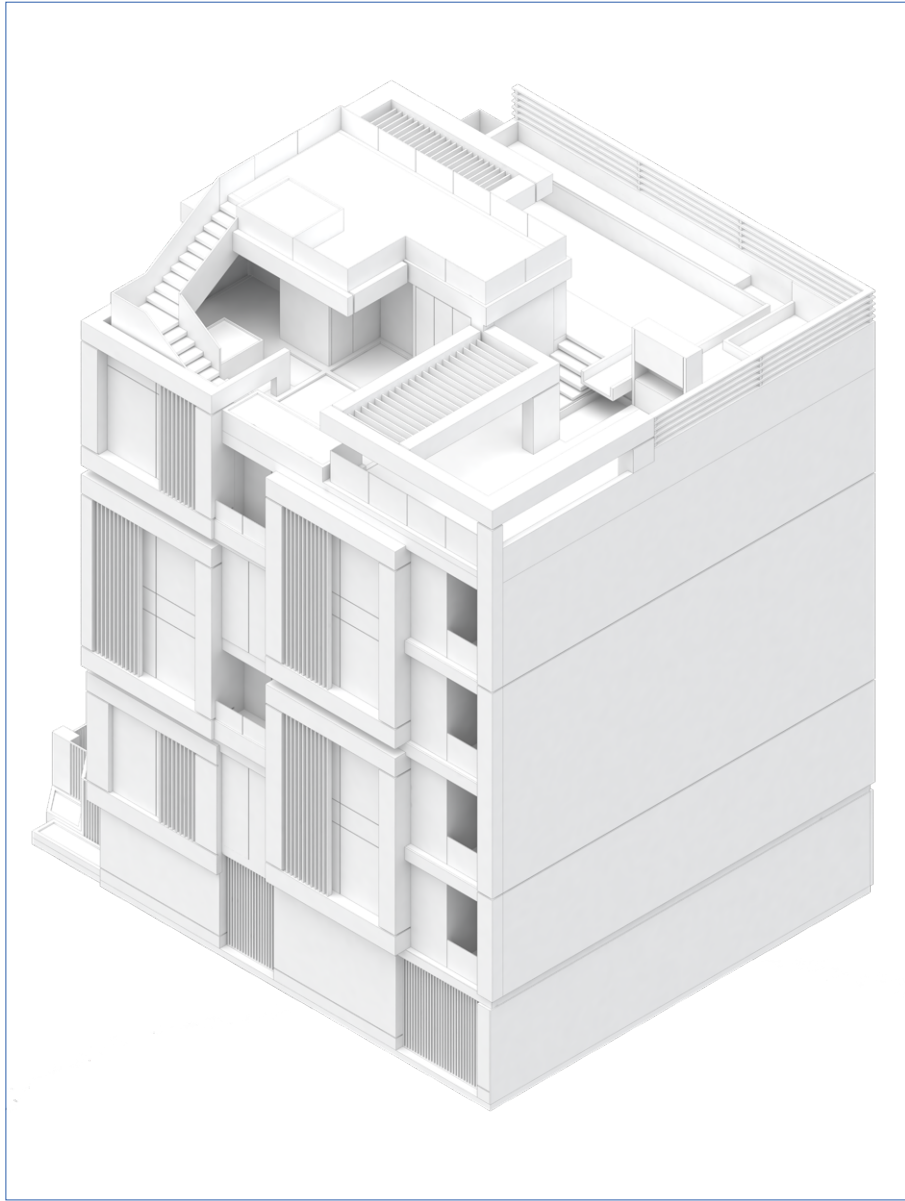
SOUTH ELEVATION



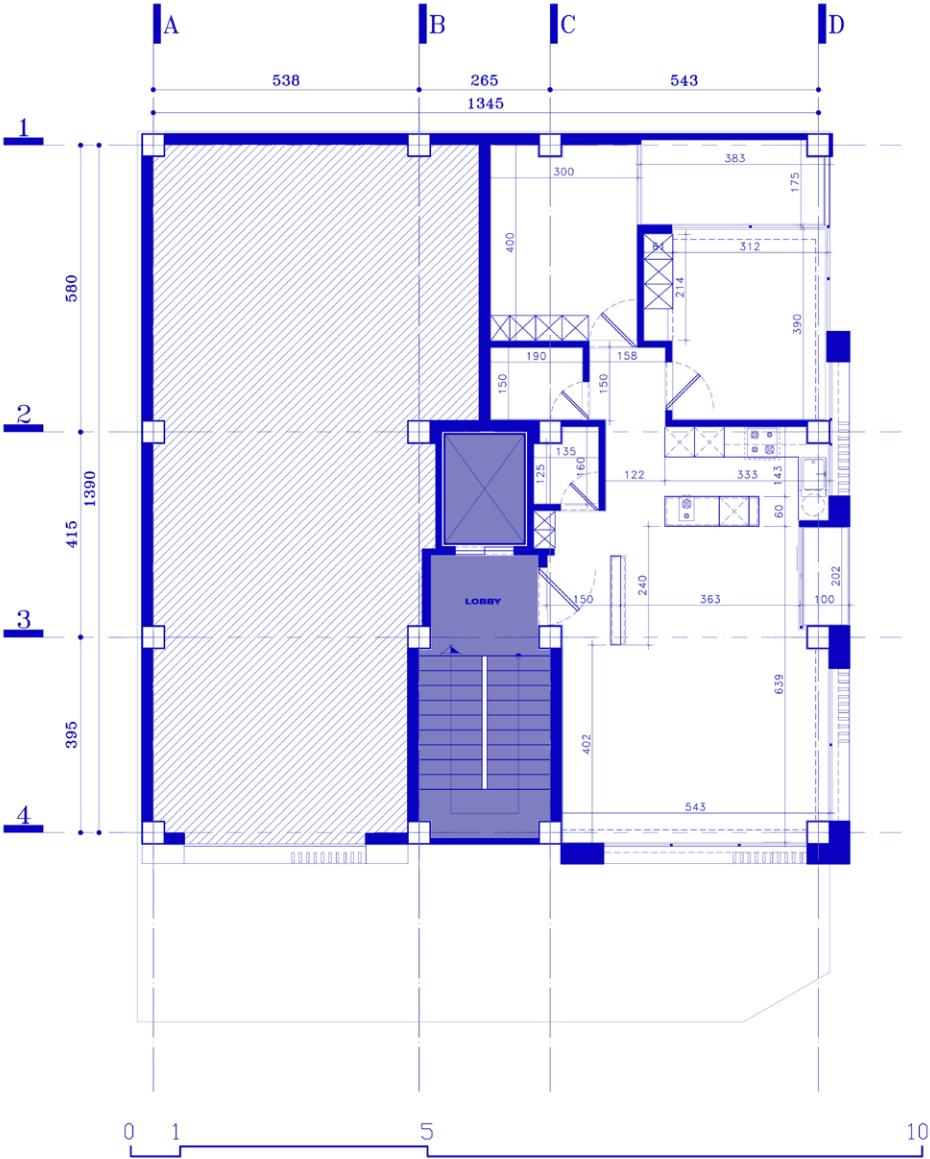
EAST & SOUTH



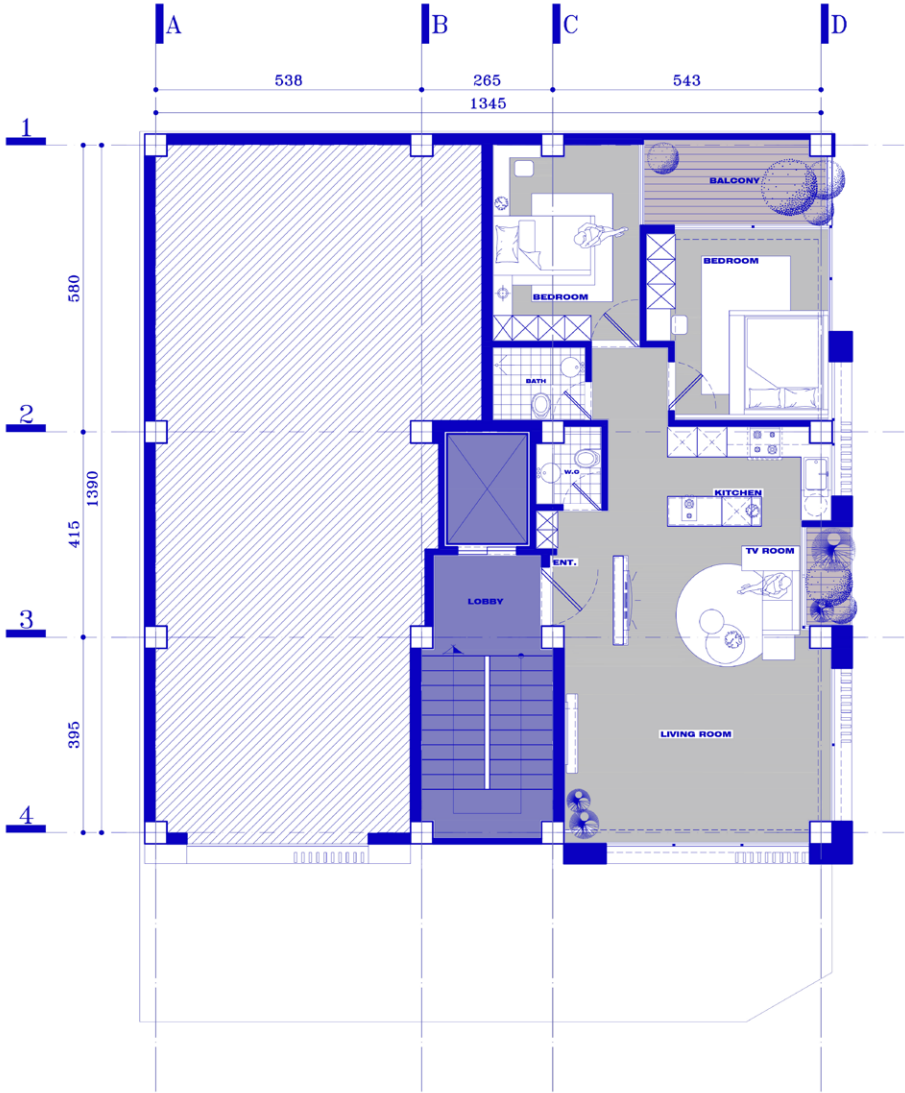
EAST ELEVATION

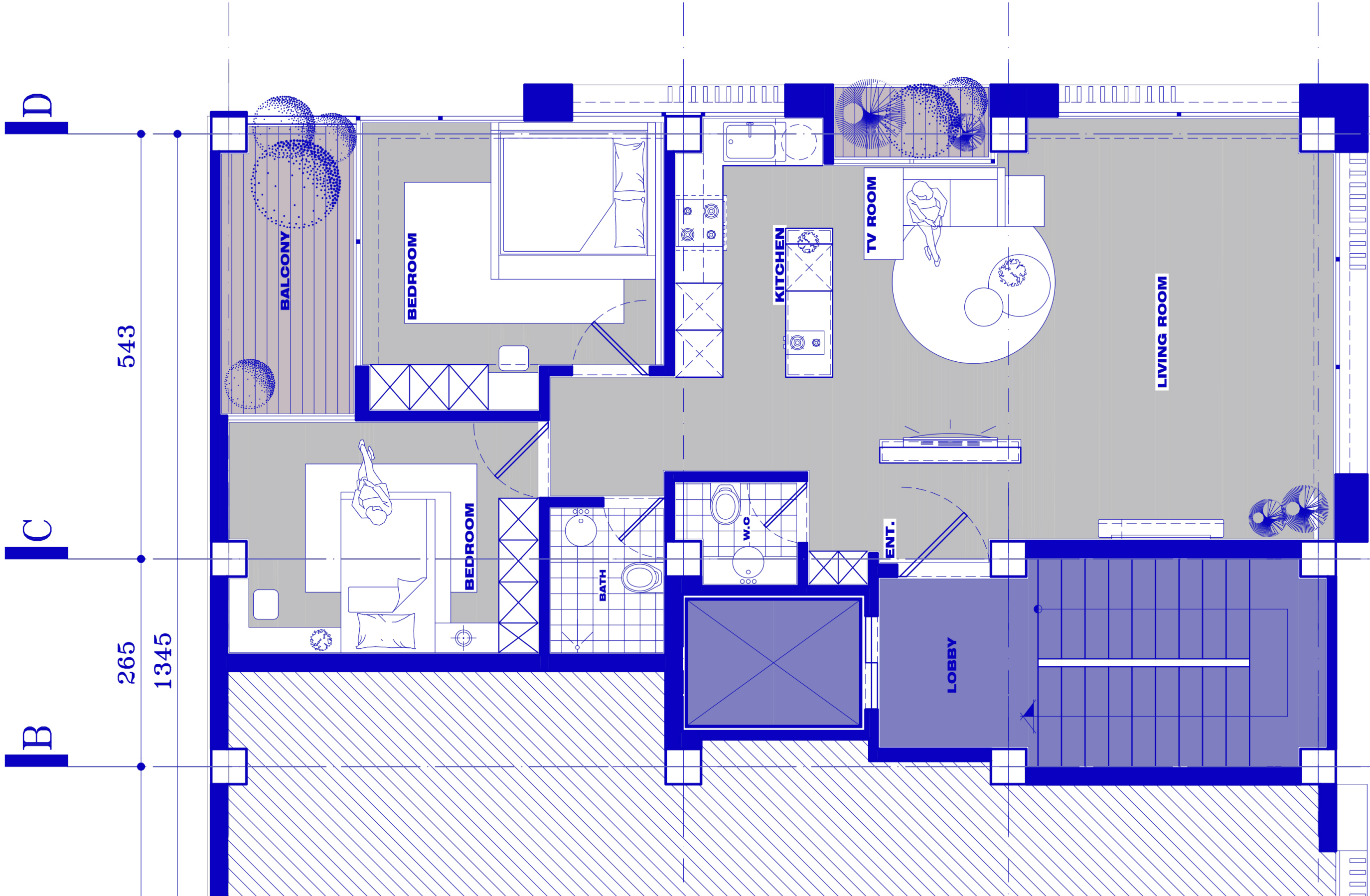


PLAN DESIGN
PLANS , FURNITURE



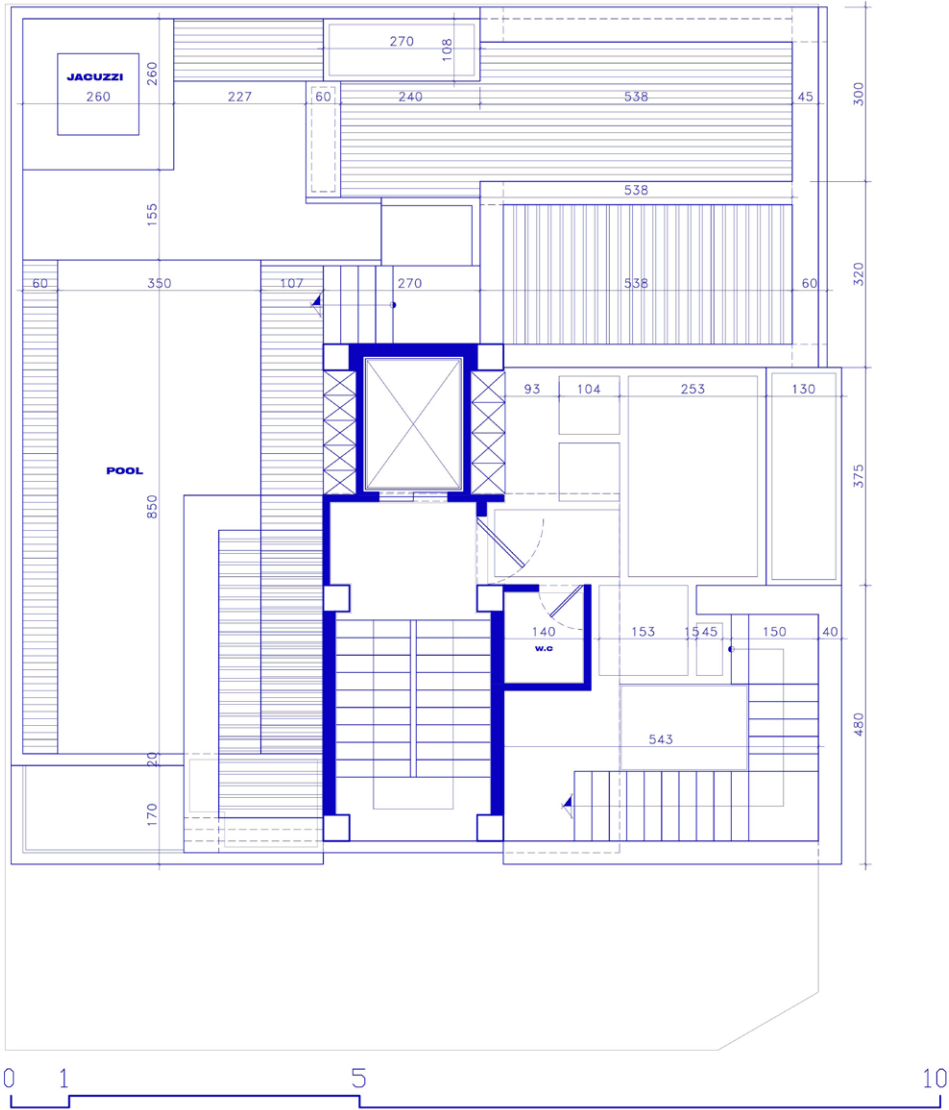
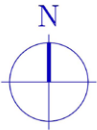
ARTEMIS RESIDENTIAL COMPLEX
LEVEL TYPICAL



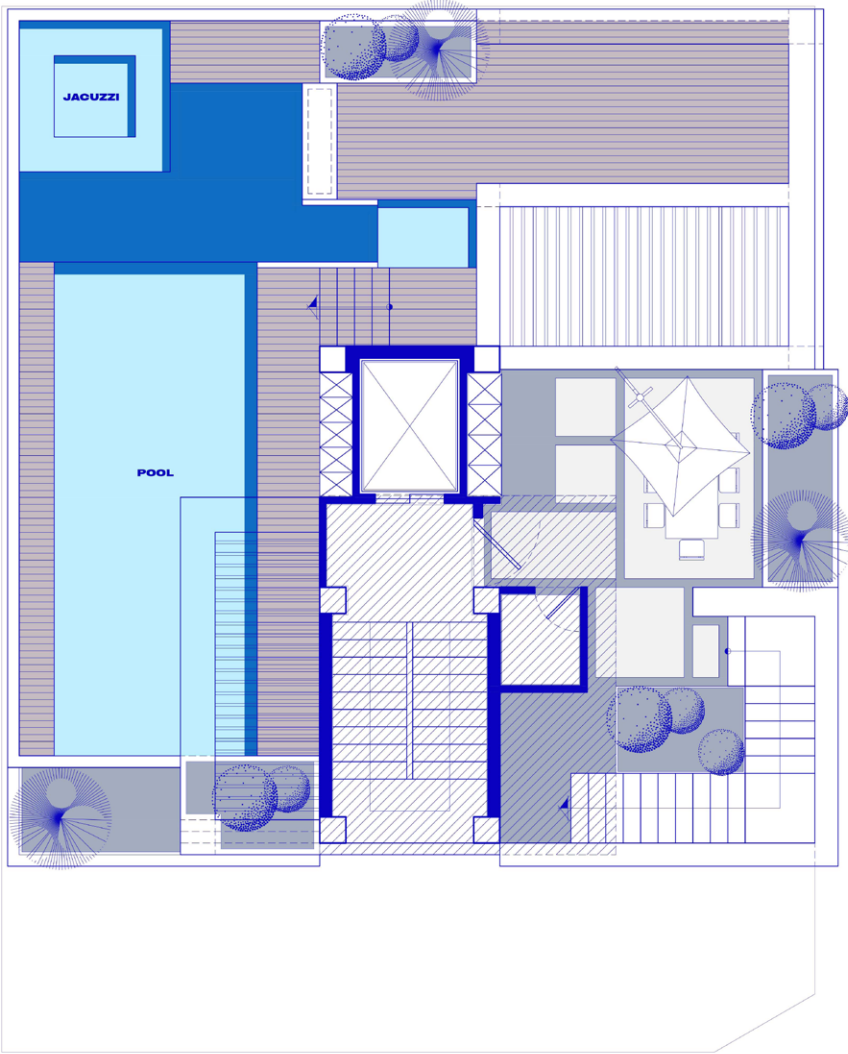


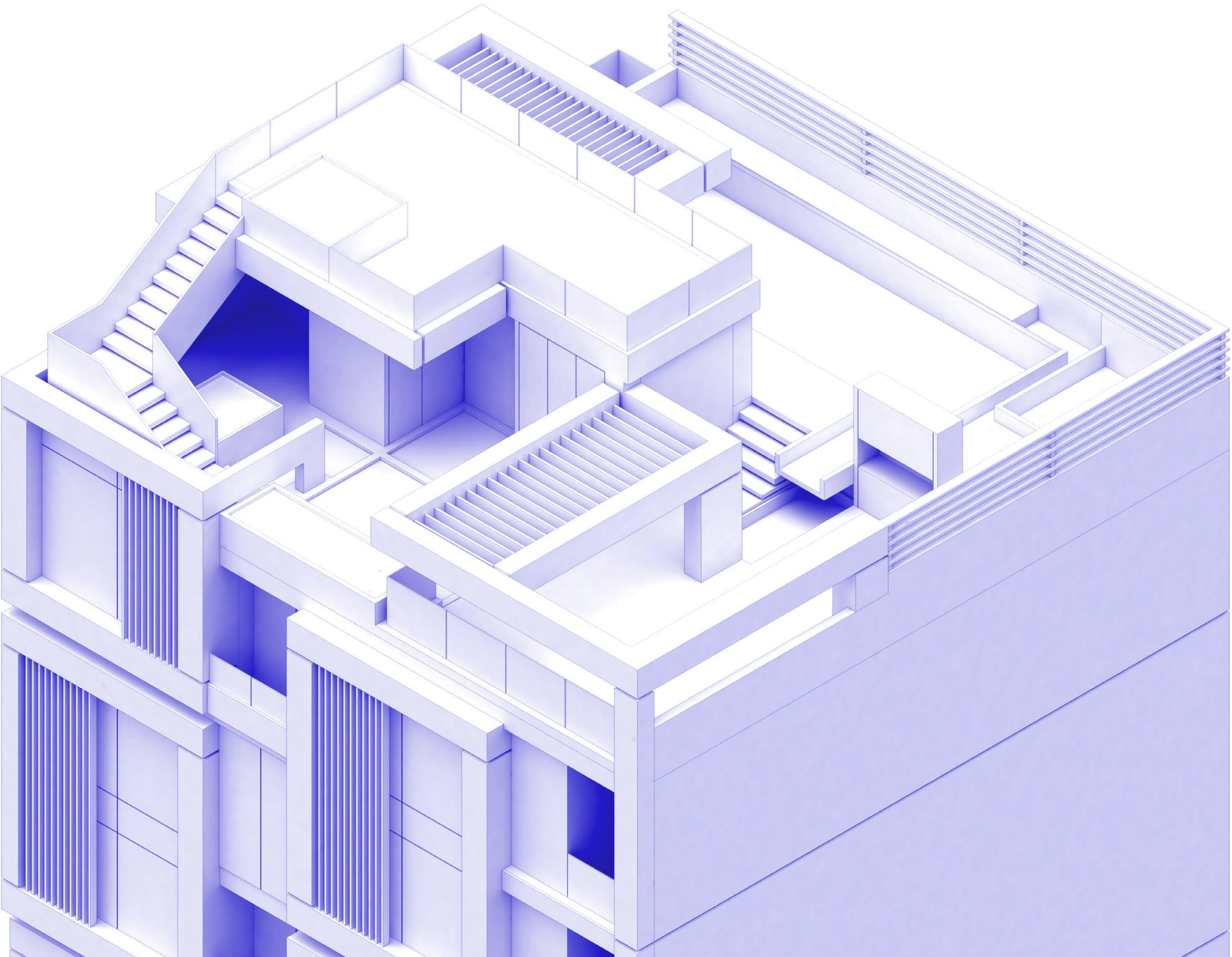
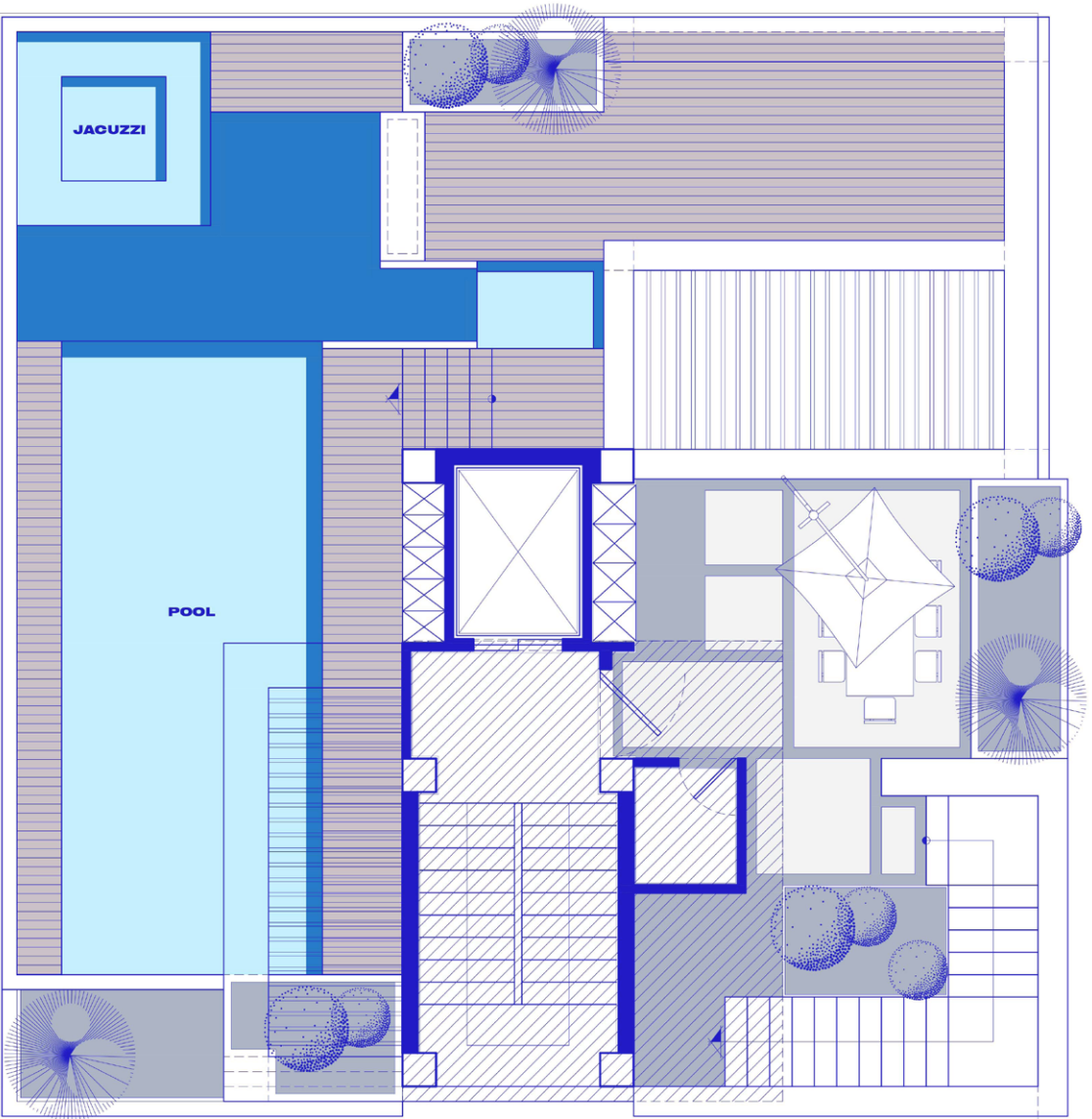
ROOF GARDEN DESIGN
RENDER

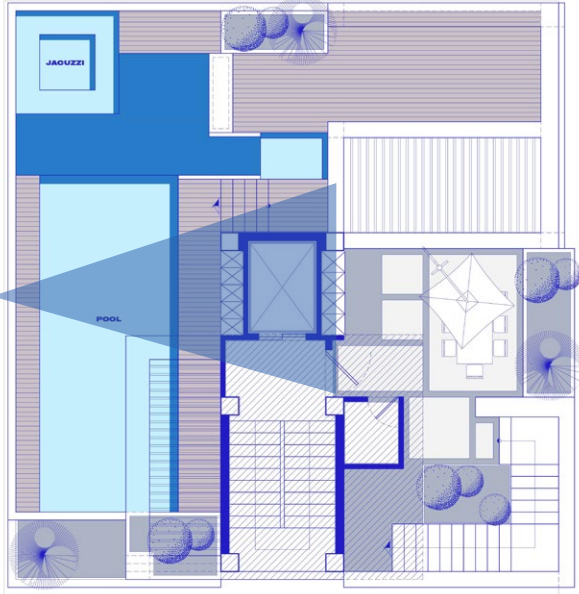
THE ROOF IS DESIGNED IN TWO LEVELS:
THE MAIN ROOF AND AN ELEVATED DECK LINKED VIA A METAL STAIR OVER THE SERVICE CORE, CREATING A BIRD’S-EYE VANTAGE AND A RICH SPATIAL SEQUENCE. **PROPOSED ZONING:**
LINEAR WATER FEATURE AS A PERSPECTIVE ANCHOR AND SOUND BACK-DROP
POOL + JACUZZI WITH CLEAR GUARDS AND AN OUTDOOR SHOWER
COVERED GAZEBO WITH SOFT SEATING AND WARM LIGHTING
BARBEQUE WITH A COMPACT SERVICE COUNTER AND GATHERING AREA
PERIMETER GREEN BELT WITH HARDY SPECIES AND CONCEALED DRIP IRRIGATION
MIXED DECKING (THERMOWOOD/DARK STONE) CONTRASTING THE BRIGHT MARBLE FRAMES
SEPARATE MAINTENANCE PATH TO KEEP GUEST CIRCULATION CLEAN



ARTEMIS RESIDENTIAL COMPLEX
LEVEL ROOF GARDEN
SC. 1:100

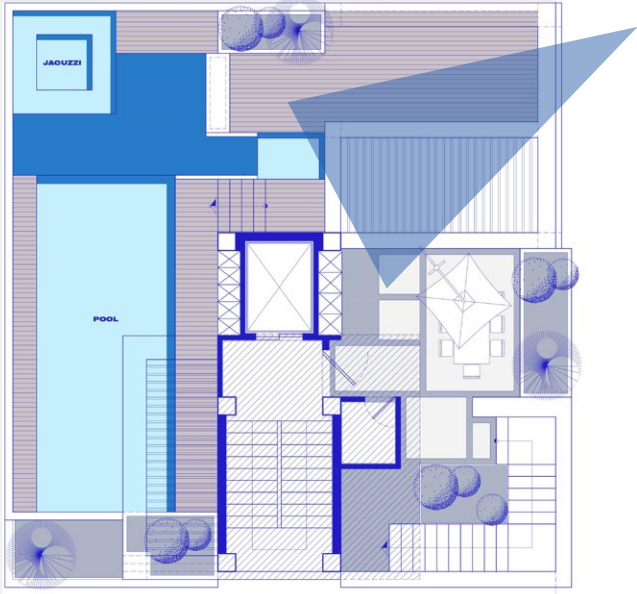




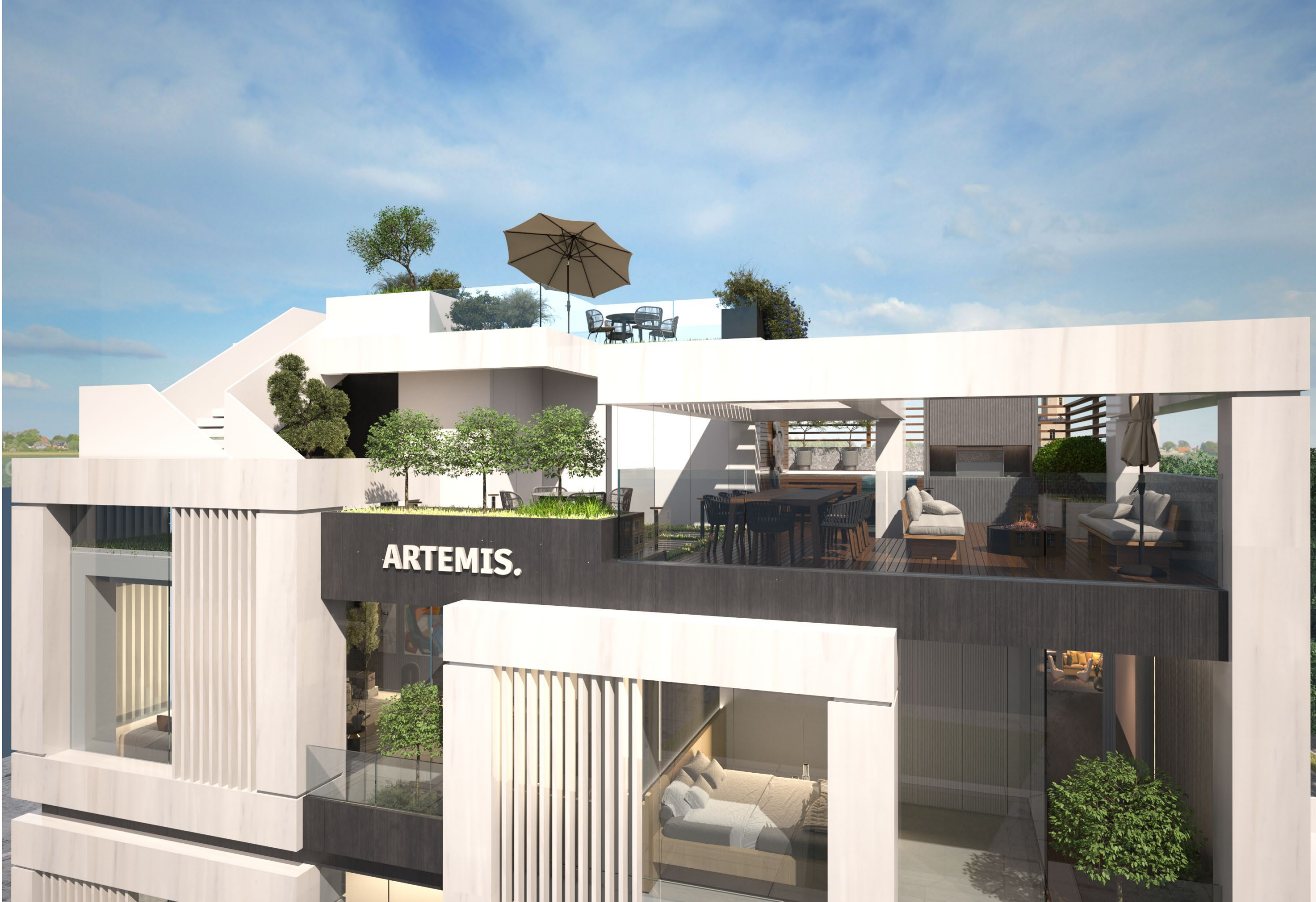


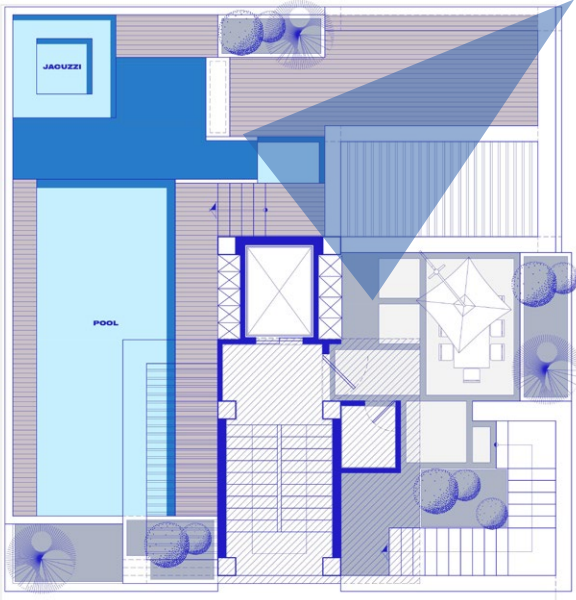
ARTEMIS RESIDENTIAL





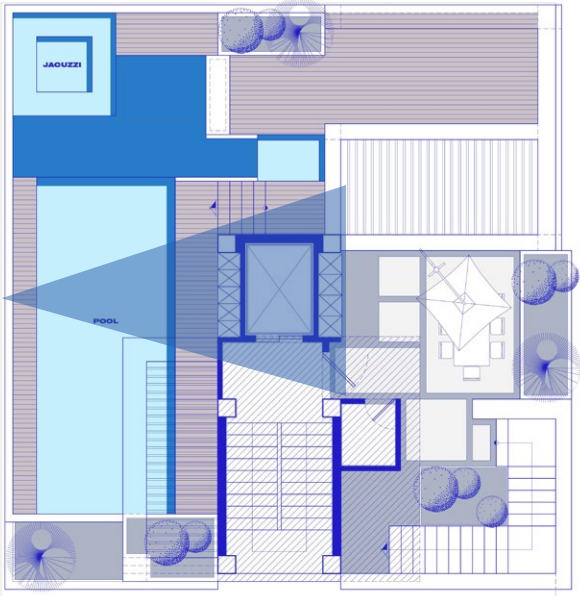
ARTEMIS RESIDENTIAL





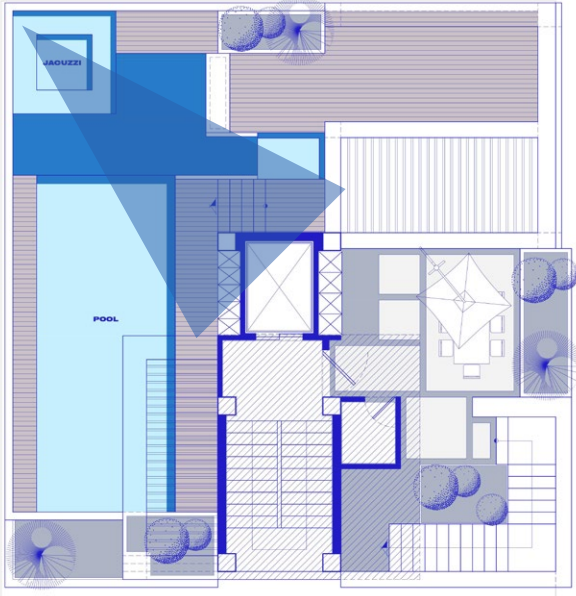
ARTEMIS RESIDENTIAL





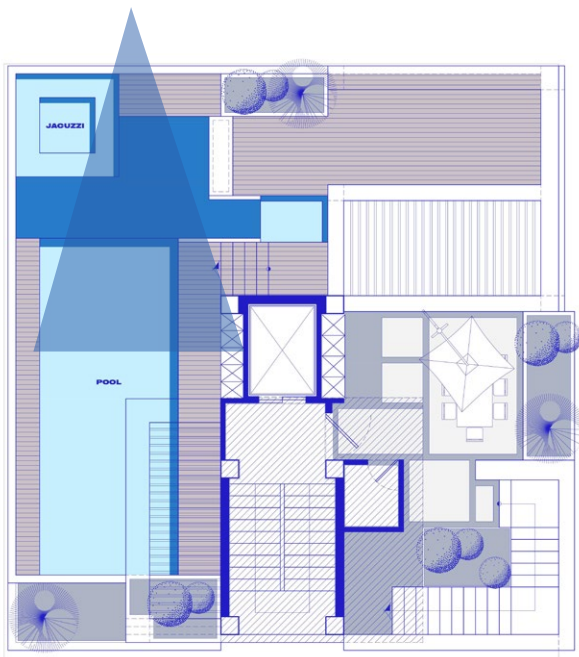
ARTEMIS RESIDENTIAL





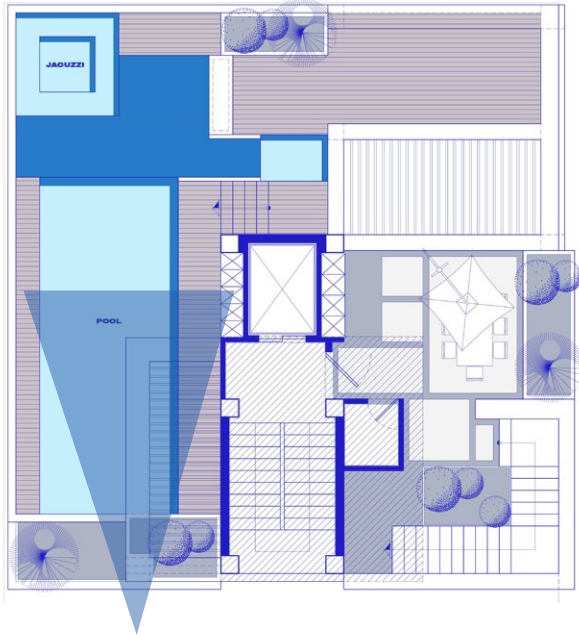
ARTEMIS RESIDENTIAL





ARTEMIS RESIDENTIAL





ARTEMIS RESIDENTIAL



ELEVATION FACADE DESIGN
RENDER

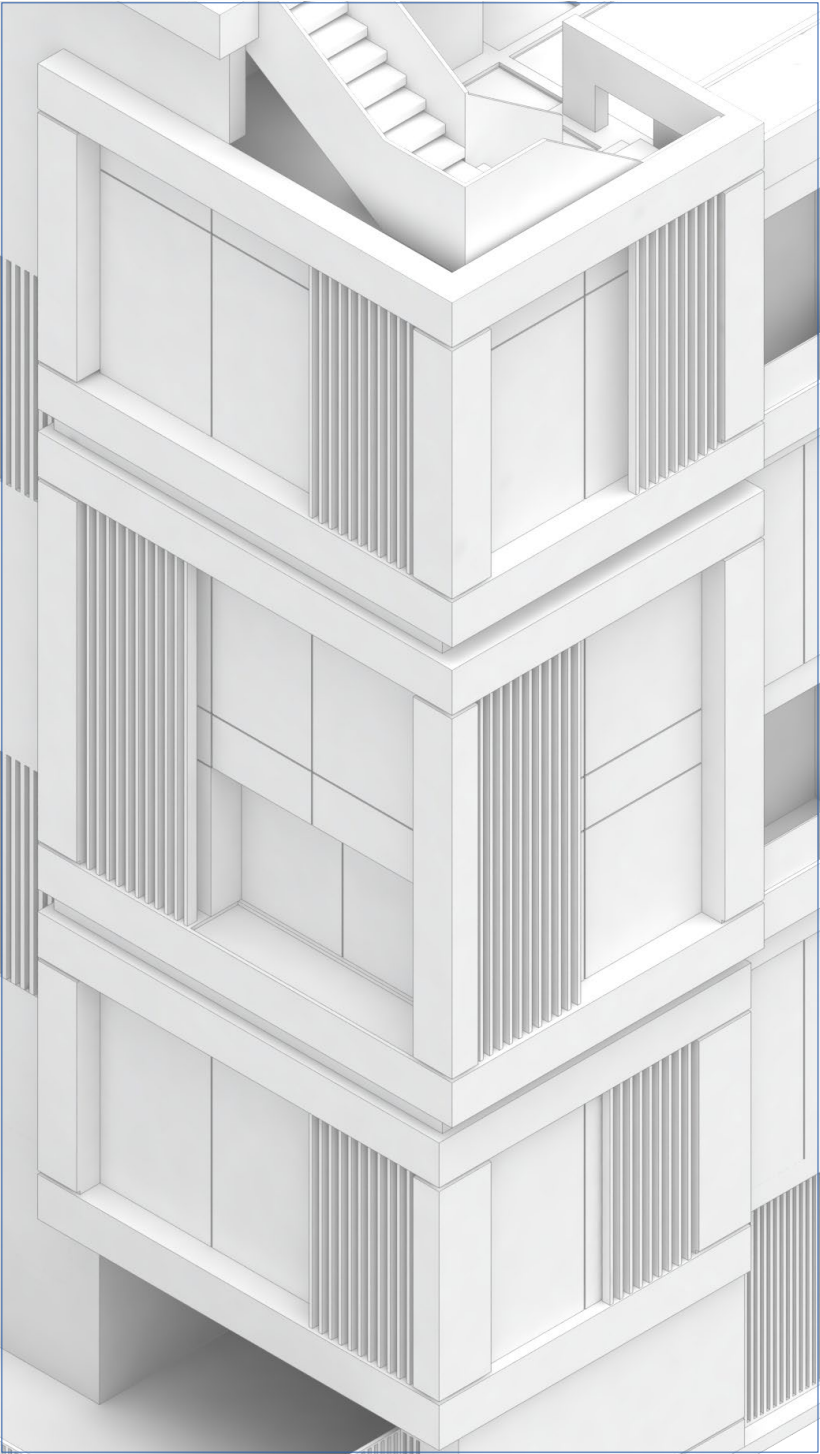
1. INITIAL FORM – BIRTH OF SEVEN SQUARES
THE FAÇADE’S MAIN SKIN IS COMPOSED OF SEVEN EQUAL SQUARES. THESE SQUARES WERE GENERATED BASED ON A SYSTEMATIC DIVISION OF THE FAÇADE AND SELECTED AS THE PRIMARY DESIGN MODULES.

2. HORIZONTAL & VERTICAL DYNAMICS – SHIFTING ALONG X AND Y
EACH SQUARE WAS SHIFTED ALONG THE HORIZONTAL (X) AND VERTICAL (Y) AXES TO CREATE VISUAL DYNAMISM AND AVOID MONOTONY.

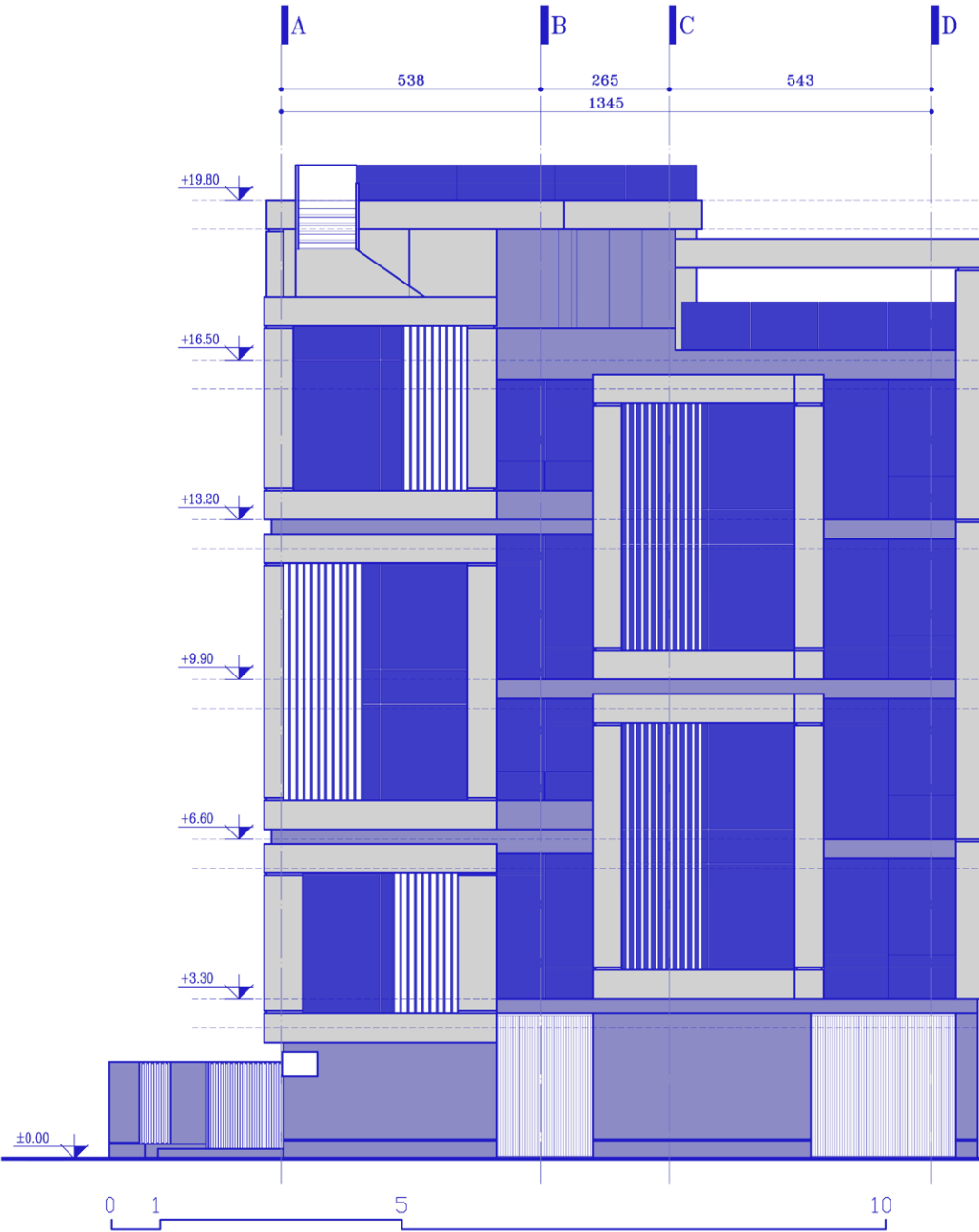
3. CREATING DEPTH – SHIFTING ALONG Z
DEPTH WAS INTRODUCED TO THE FAÇADE BY PUSHING AND PULLING THE SQUARES ALONG THE Z AXIS, ENHANCING SHADOWS AND THE THREE-DIMENSIONAL CHARACTER OF THE BUILDING.

4. BREATHING FAÇADE – ADDING TERRACES AND GREENERY
OPEN TERRACES WERE INTEGRATED WITHIN THE SQUARES, COMPLEMENTED BY PLANTERS AND VERTICAL GREENERY TO ESTABLISH A STRONG CONNECTION WITH NATURE. THIS GREENERY ENHANCES THE VISUAL QUALITY WHILE IMPROVING ENVIRONMENTAL PERFORMANCE.

5. FINAL IDENTITY – DETAILS & MATERIALS
WHITE MARBLE STONE WAS USED AS THE MAIN CLADDING, COMPLEMENTED BY SCREWED BLACK GRANITE IN SECONDARY PARTS TO CREATE A LUXURIOUS MODERN CONTRAST. HIDDEN LIGHTING DETAILS HIGHLIGHT THE VOLUMETRIC SHIFTS AT NIGHT

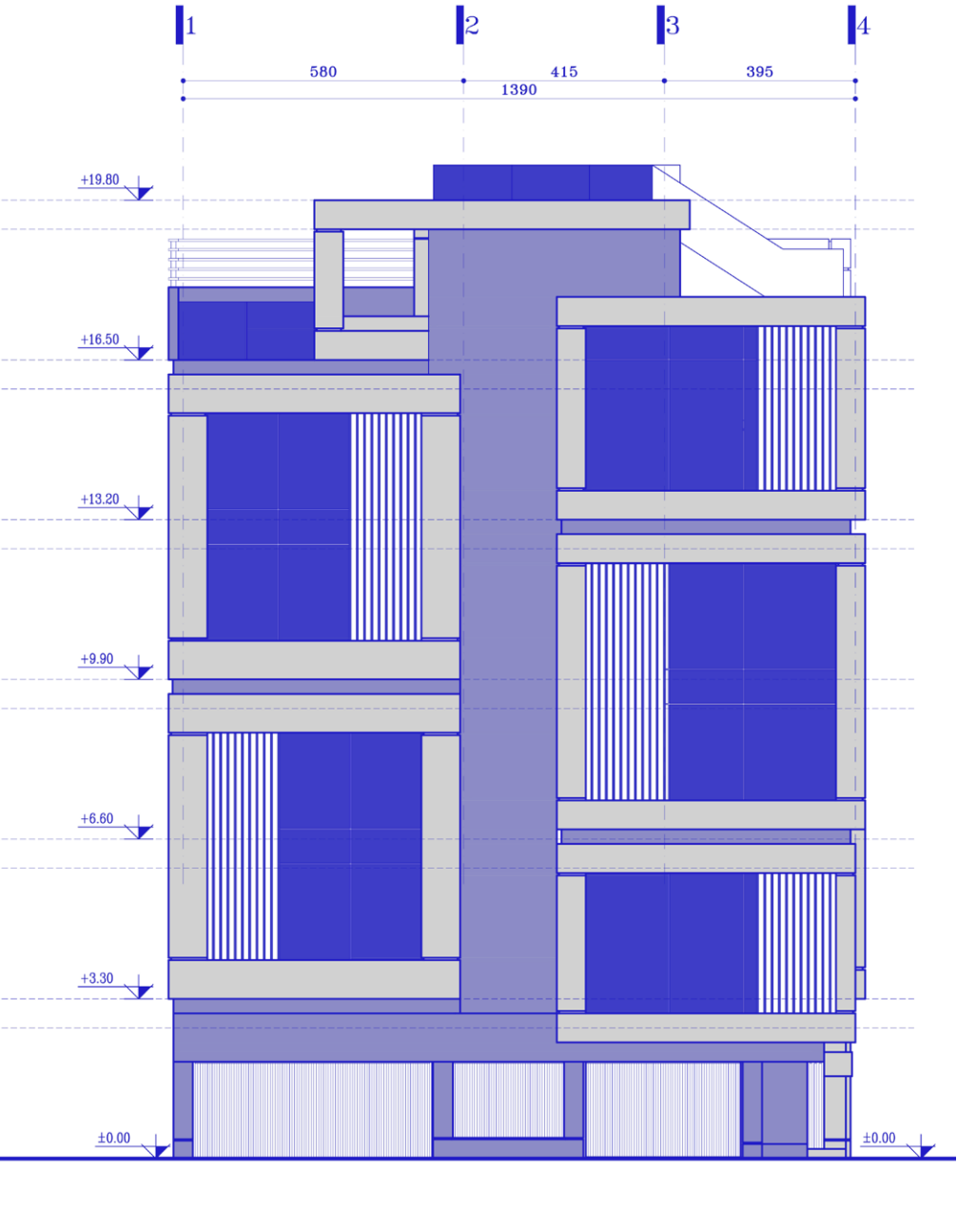


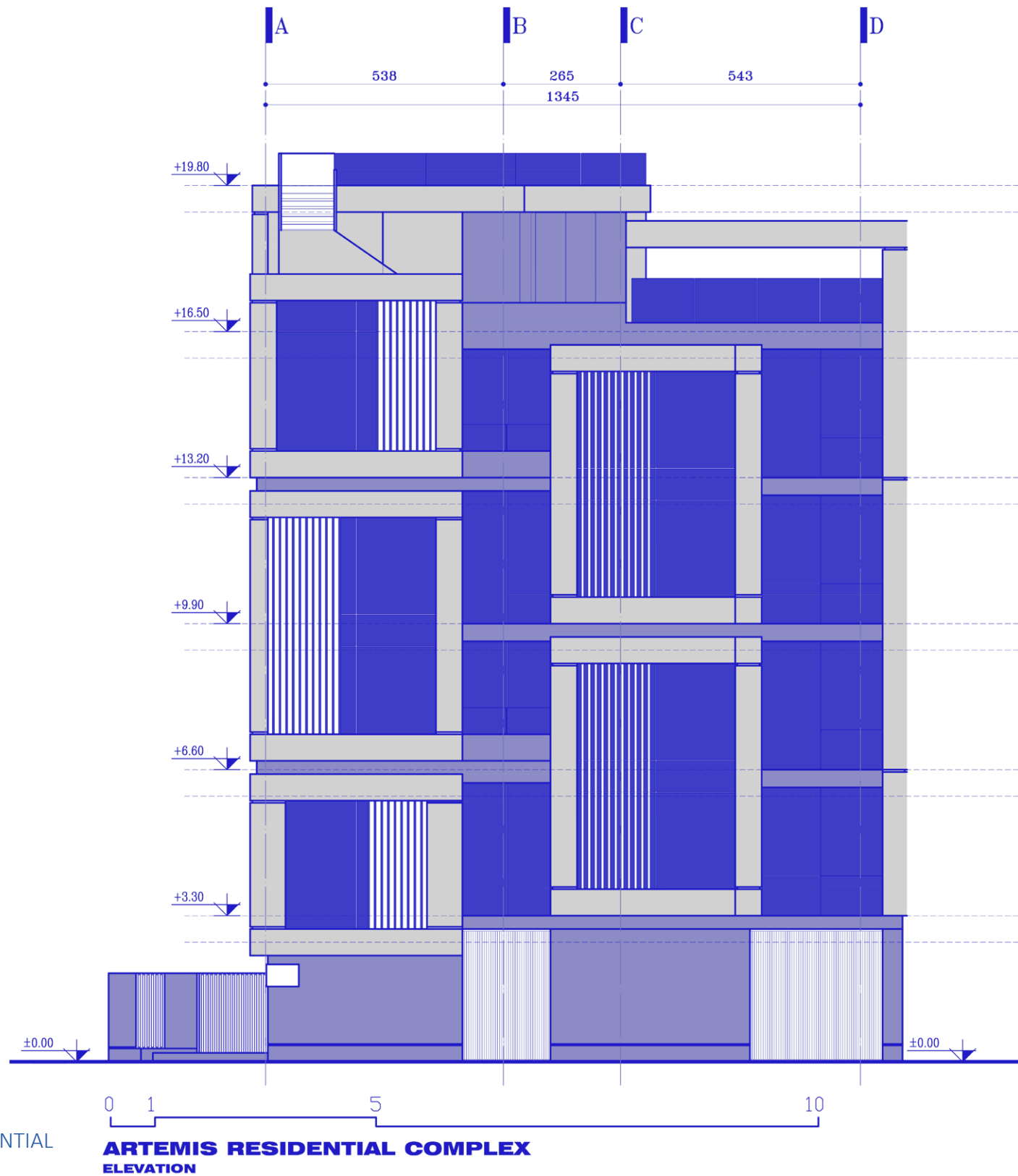
EAST ELEVATION



ARTEMIS RESIDENTIAL COMPLEX
ELEVATION

SOUTH ELEVATION





A DARK CENTRAL SPINE ACTS AS A NEUTRAL BACKDROP WHILE SEVEN BRIGHT FRAMES GLIDE OVER IT LIKE URBAN LANTERNS. THIS DUAL-LAYER READING CLARIFIES STRUCTURE VS. SKIN AND ENHANCES PERCEIVED DEPTH

EQUAL MODULES SET A CALM RHYTHM, WHILE THE X/Y/Z SHIFTS BREAK MONOTONY. AT THE CORNER LOT, THE SEQUENCE OF FRAMES STITCHES THE TWO STREET FRONTS TOGETHER, TURNING THE CORNER INTO A VISUAL HINGE.

THE FRAMES' THICKNESS IS INTENTIONALLY EMPHASIZED TO SELF-SHADE; BY DAY IT AIDS COOLING, AND AT NIGHT LINEAR CONCEALED LIGHTING TURNS EDGES INTO LINES OF LIGHT.

FULL-HEIGHT GLAZING, GLASS BALUSTRADES, AND VERTICALLY RIBBED INFILL PANELS CREATE A PRIVACY GRADIENT—FROM FULLY OPEN LIVING AREAS TO SEMI-SCREENED TERRACES—KEEPING THE FAÇADE BREATHABLE AND ALIVE.

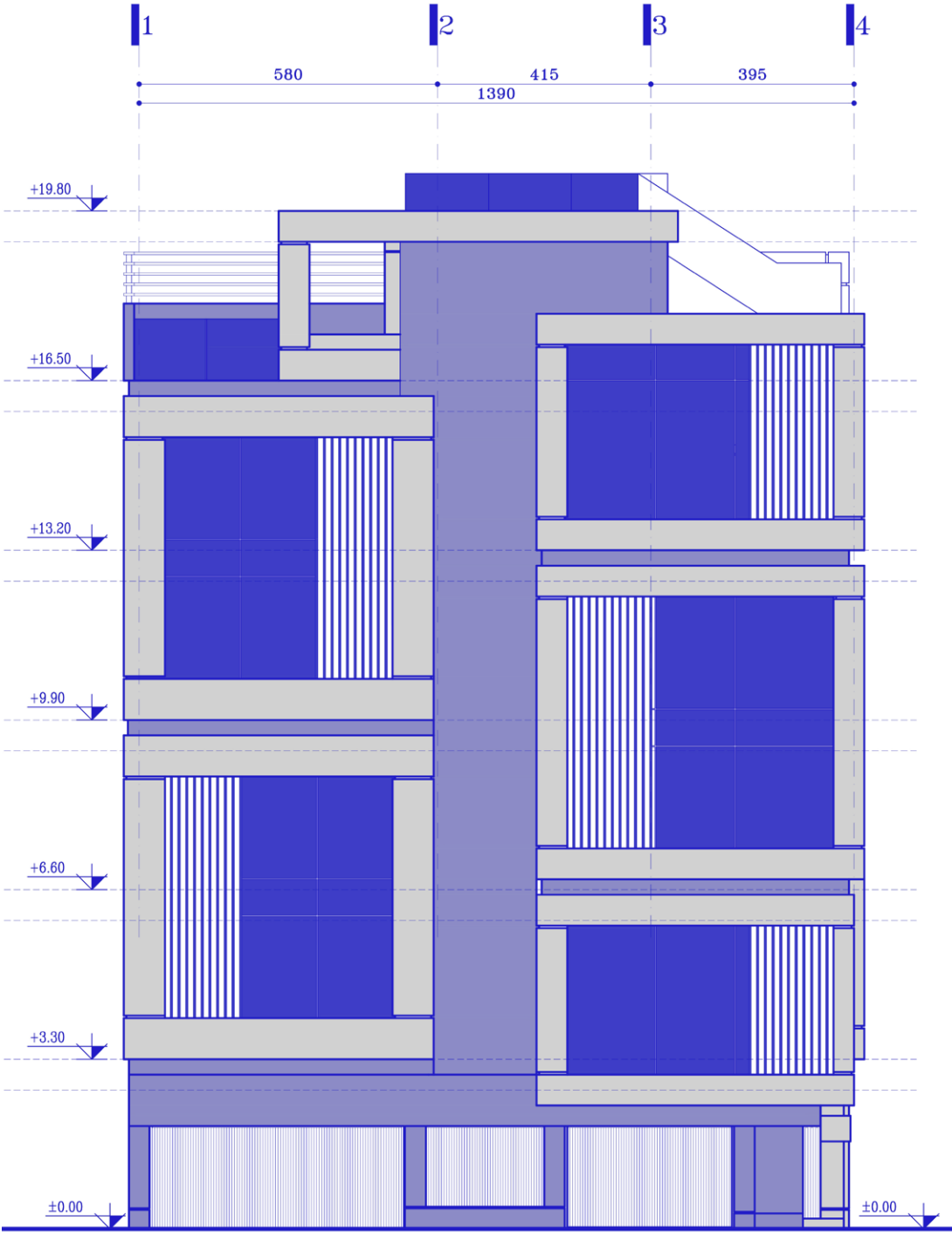
LINEAR PLANTERS AT SILL/GUARD LEVELS MAKE GREENERY PART OF THE FRAME, NOT AN ADD-ON. A MIX OF EVERGREEN AND SEASONAL SPECIES KEEPS A YEAR-ROUND GREEN LAYER AND EXPRESSES SEASONALITY ON THE FAÇADE.

A SOLID GREY STONE PLINTH (PILOTIS/ENTRIES), THE WHITE-MARBLE FRAMED BODY, AND A SLIGHTLY RECESSED TOP WITH A LIGHT CANOPY REVIVE THE BASE-MIDDLE-TOP COMPOSITION IN A MODERN IDIOM.

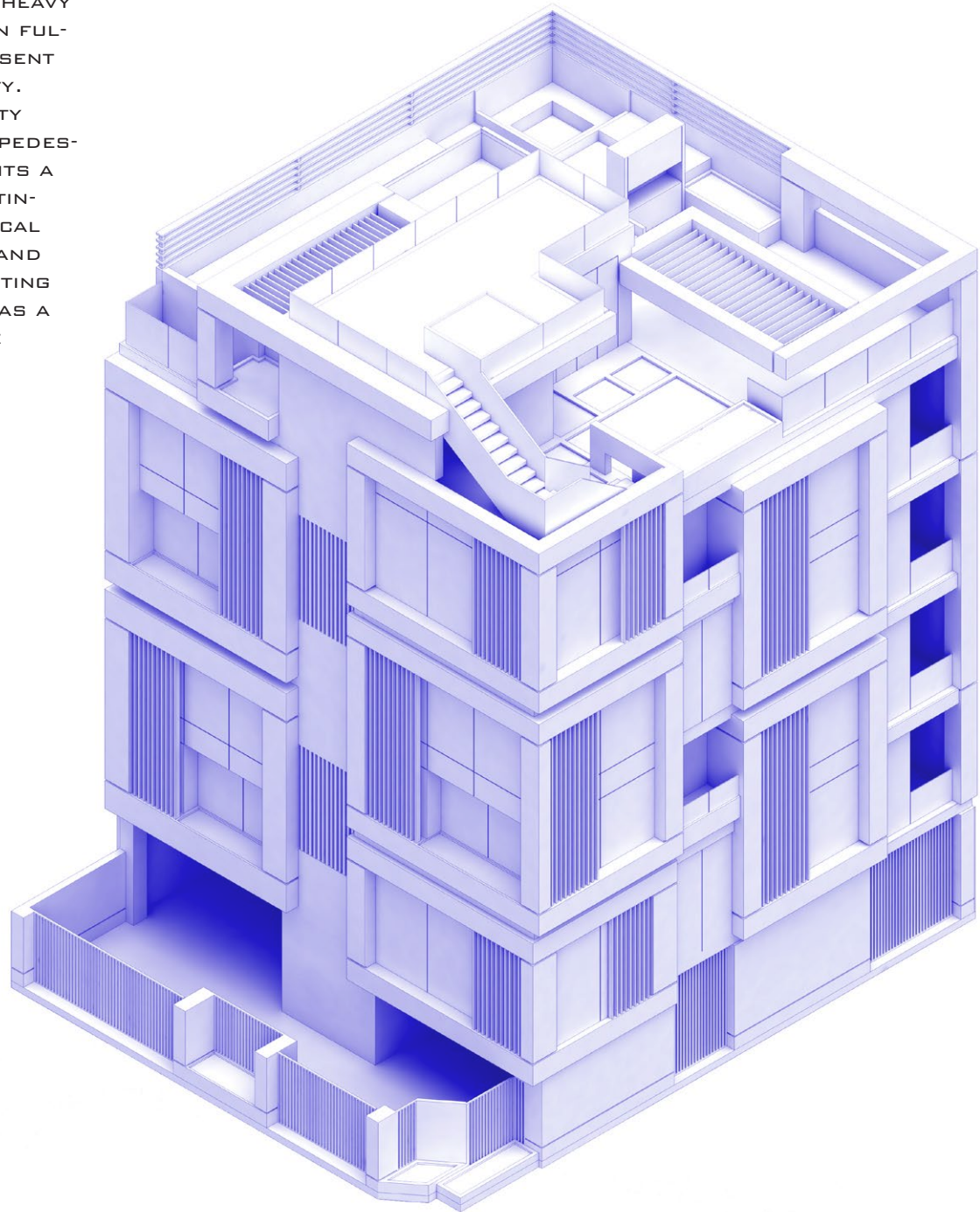
THE PEDESTRIAN ENTRANCE IS SUBTLY RECESSED AND SOFTENED WITH PLANTING; VEHICULAR GATES ALIGN WITH THE VERTICAL RHYTHM SO THE GROUND-FLOOR DATUM STAYS CLEAN AND LEGIBLE.

PRIMARY FRAMES IN WHITE MARBLE REFLECT LIGHT AND KEEP VOLUMES LUMINOUS; BACKGROUND/SPINE SURFACES USE SCREWED BLACK GRANITE AS A VENTILATED, OPEN-JOINT SKIN FOR DURABILITY, REPLACEABILITY, AND CRISP DRY JOINTS.

PRIMARY FRAMES IN WHITE MARBLE REFLECT LIGHT AND KEEP VOLUMES LUMINOUS; BACKGROUND/SPINE SURFACES USE SCREWED BLACK GRANITE AS A VENTILATED, OPEN-JOINT SKIN FOR DURABILITY, REPLACEABILITY, AND CRISP DRY JOINTS.



THE PROJECT'S GEOMETRIC LANGUAGE RELIES ON THE SQUARE FRAME, YET EACH FRAME TELLS ITS OWN STORY: SOME SWALLOW A TERRACE, SOME TURN FINS INTO A HEAVY CURTAIN, OTHERS REMAIN FULLY TRANSPARENT TO PRESENT THE INTERIOR TO THE CITY. THIS CONTROLLED VARIETY INVITES DISCOVERY FOR PEDESTRIANS WHILE GIVING UNITS A DISTINCT IDENTITY. CONTINUOUS HORIZONTAL/VERTICAL JOINTS GUIDE THE EYE, AND AT NIGHT THE EDGE LIGHTING RENDERS THE BUILDING AS A CLEAR, GRAPHIC VOLUME



ARTEMIS RESIDENTIAL



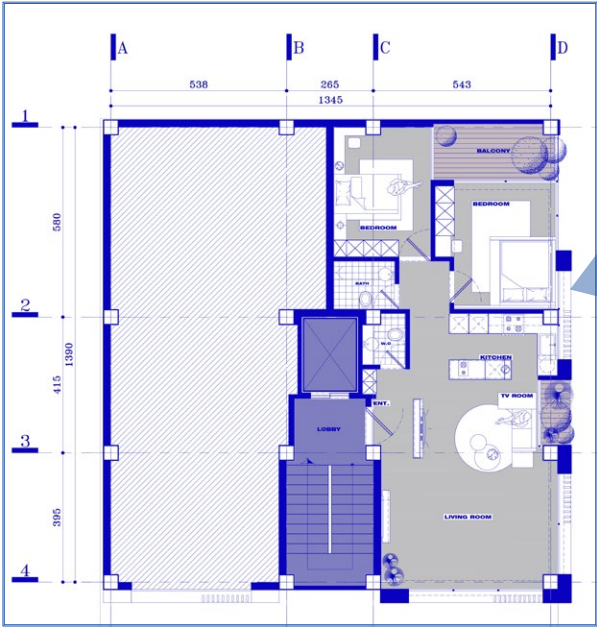


ARTEMIS RESIDENTIAL



INTERIOR DESIGN
RENDER

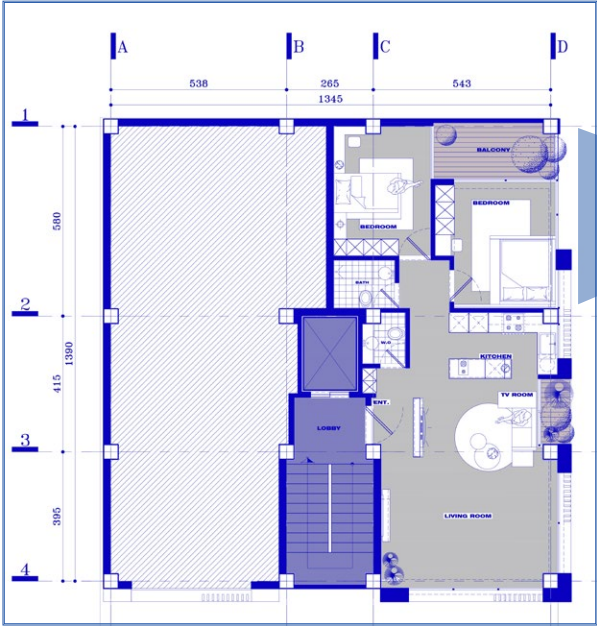
KEY PLAN



ARTEMIS RESIDENTIAL



KEY PLAN

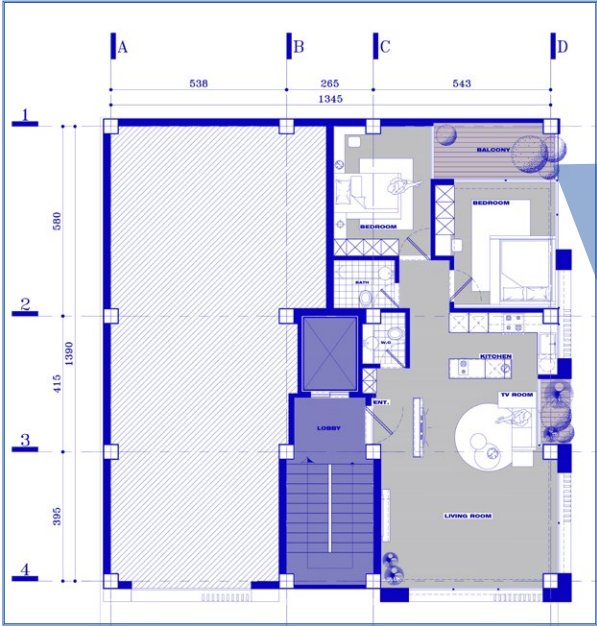


ARTEMIS RESIDENTIAL



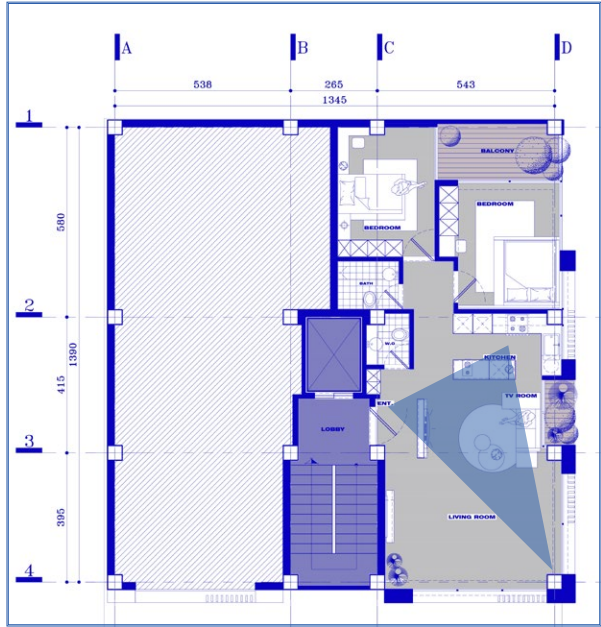


KEY PLAN



ARTEMIS RESIDENTIAL

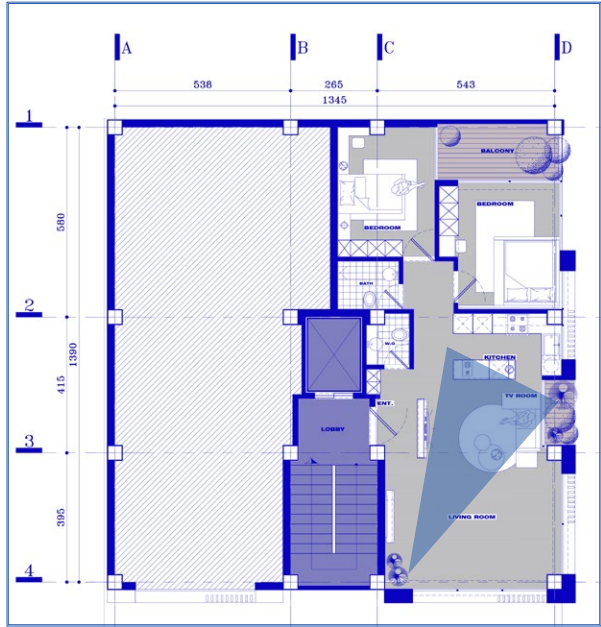
KEY PLAN



ARTEMIS RESIDENTIAL



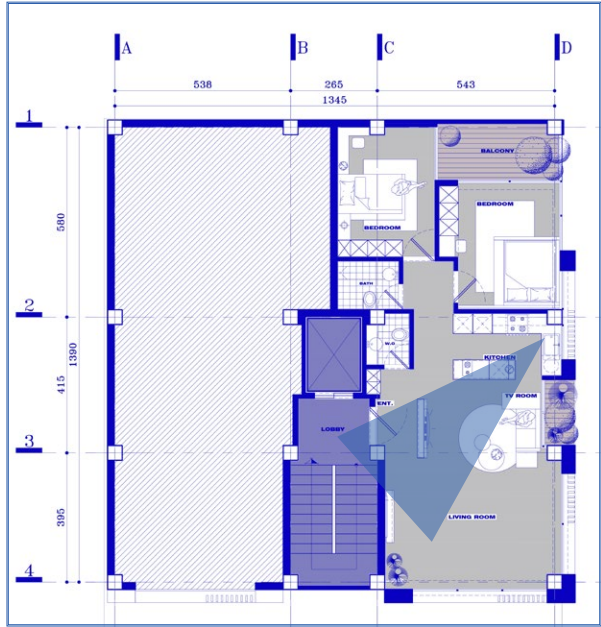
KEY PLAN



ARTEMIS RESIDENTIAL



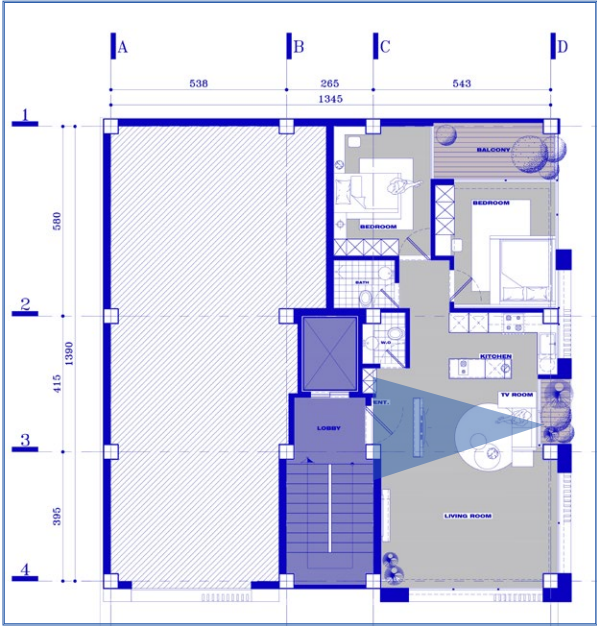
KEY PLAN



ARTEMIS RESIDENTIAL



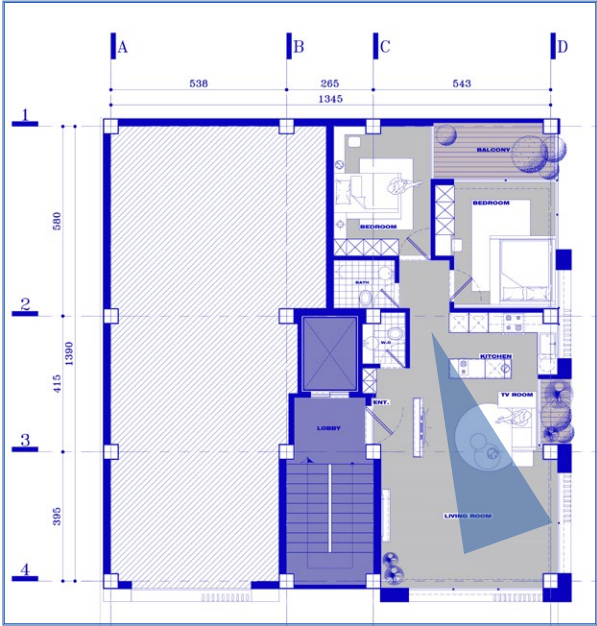
KEY PLAN



ARTEMIS RESIDENTIAL



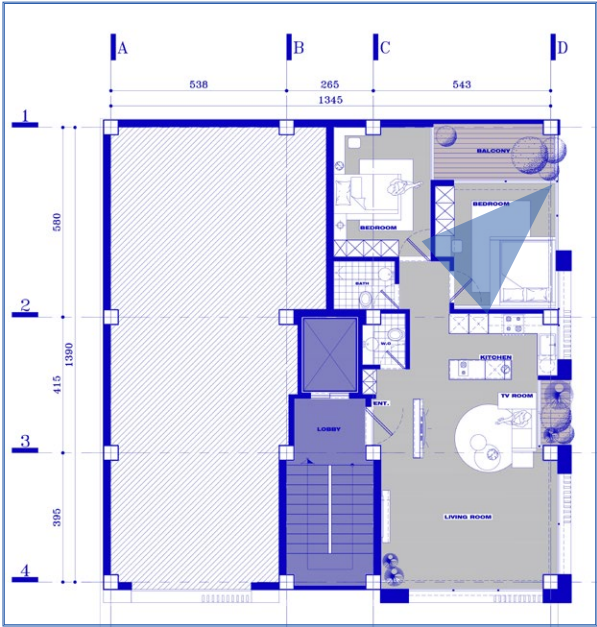
KEY PLAN



ARTEMIS RESIDENTIAL



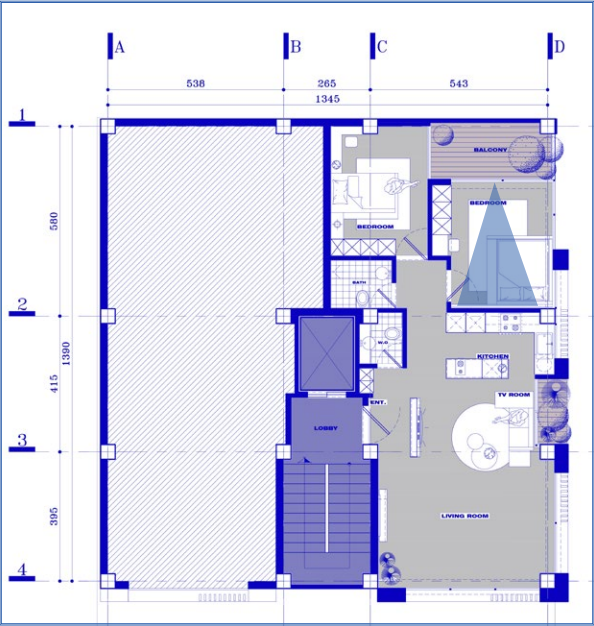
KEY PLAN



ARTEMIS RESIDENTIAL



KEY PLAN



ARTEMIS RESIDENTIAL



THE END.