

Oland20 Villa

Architecture Competition | Fall 2025

01: Design Idea

MODERN architecture

CLASSIC architecture

MODERN architecture



CLASSIC architecture

MODERN architecture



Oland 20

CLASSIC architecture

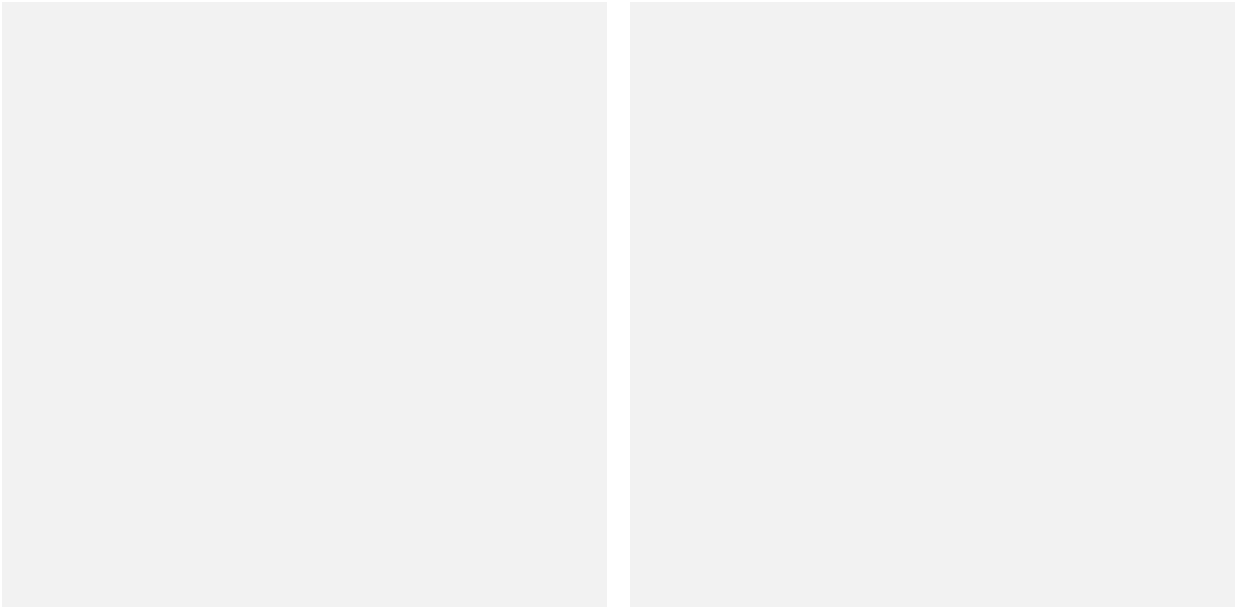
Design elements: sloped roofs



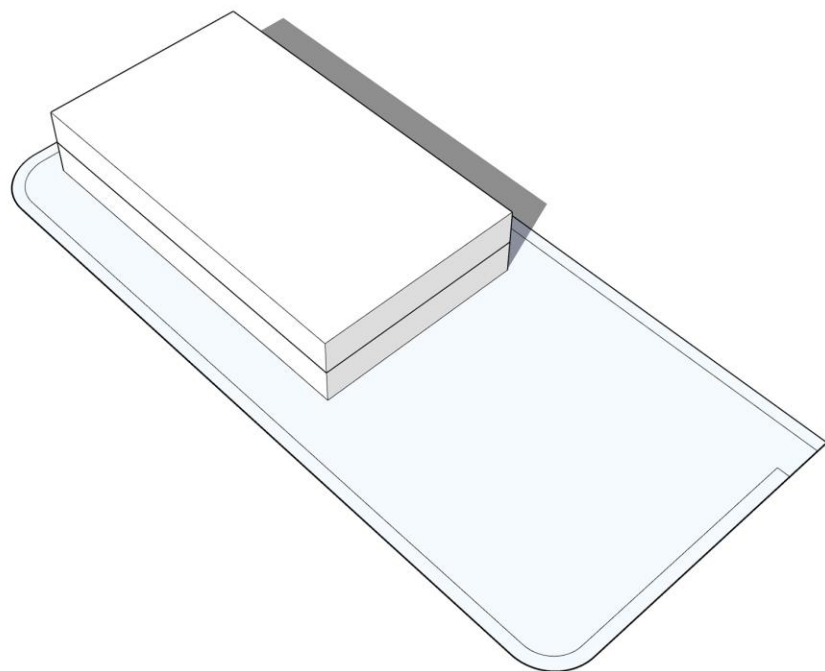
Design Elements: Arches



Design Structure: ?!



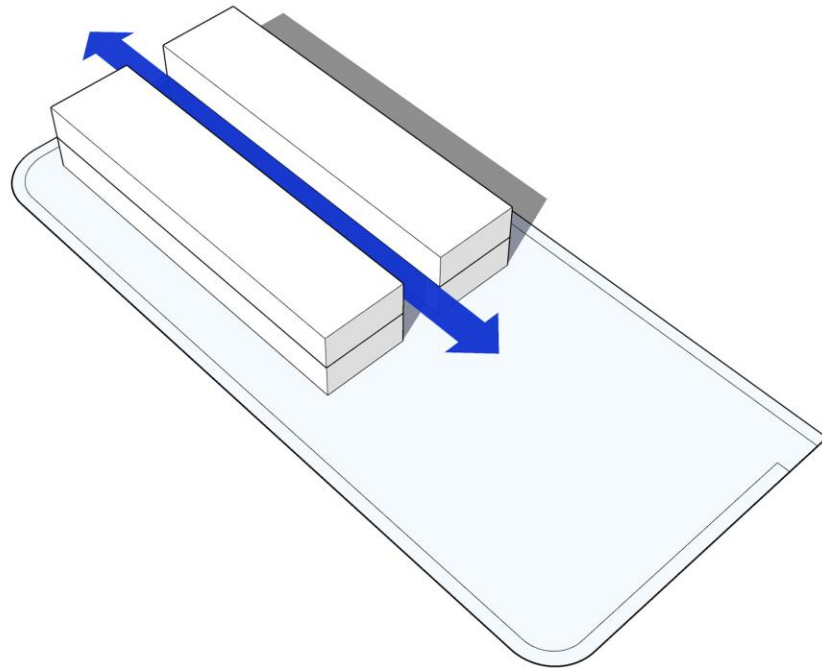
02: Design Process



Data

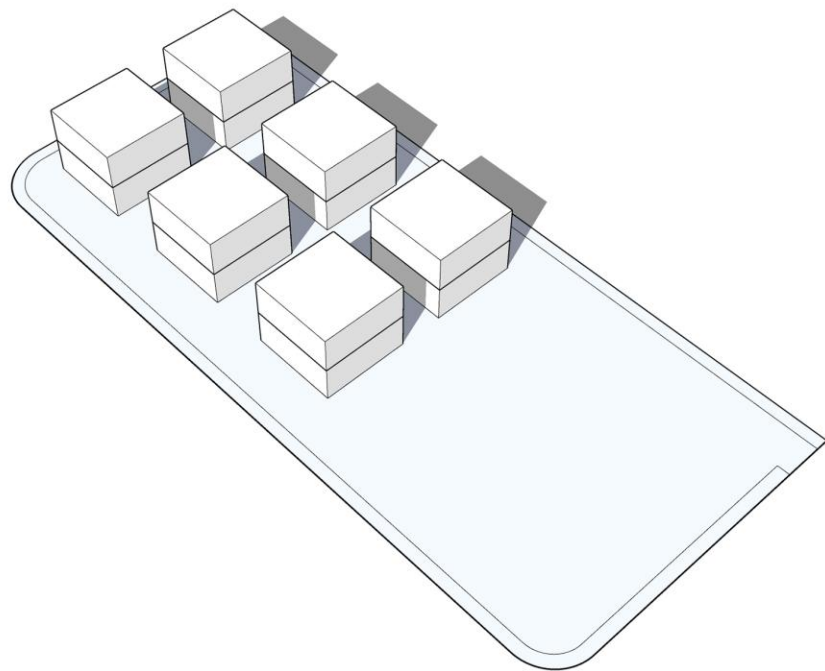
Specified villa area

Two floors, each floor about 500 square meters



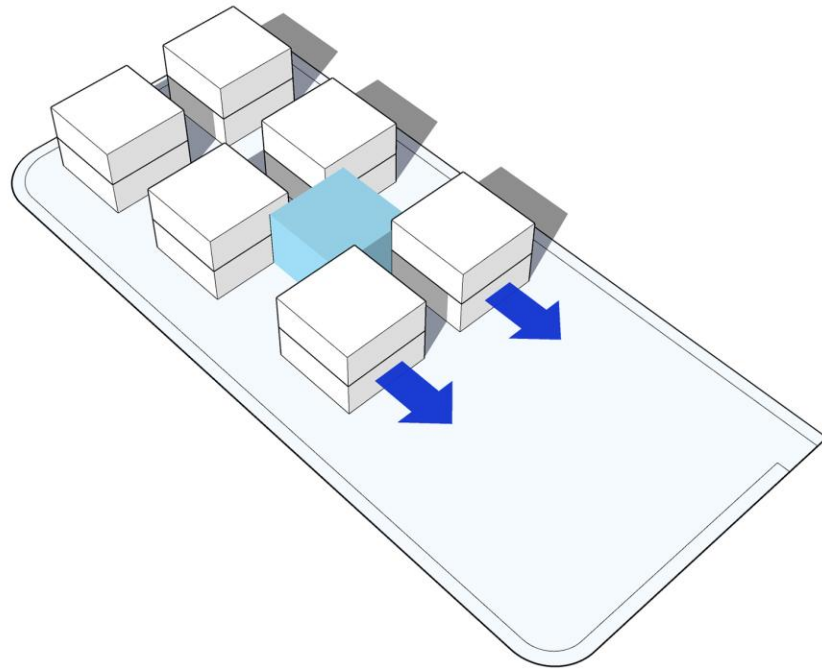
Design Idea

Creating a south-north path in the middle of the mass to create a visual extension from the site to the surrounding area of the villa
(By opening the volume on the ground floor)



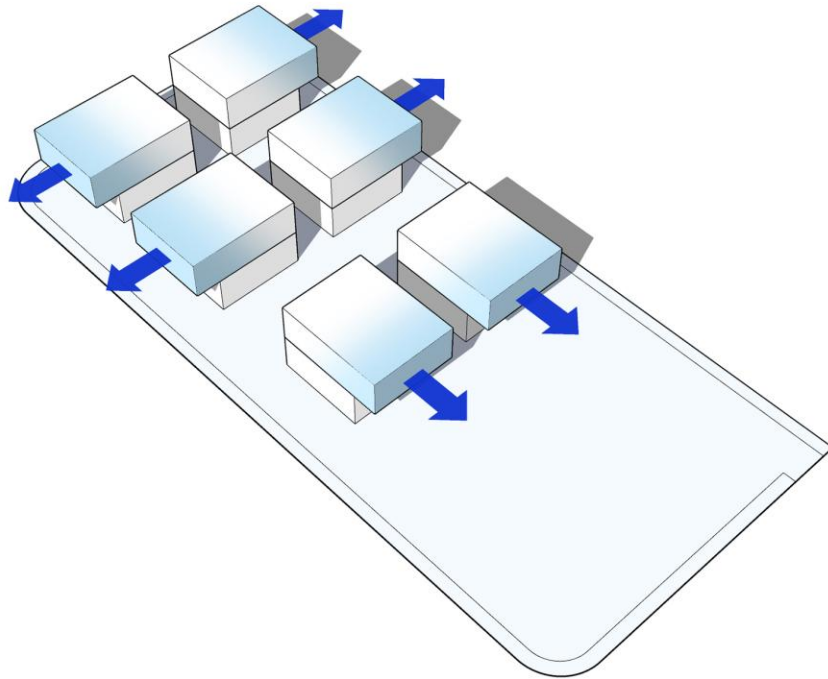
Iconic design

Transforming the mass into 6 square modules (with dimensions of 7x7 meters) to transform the villa into an iconic and memorable form



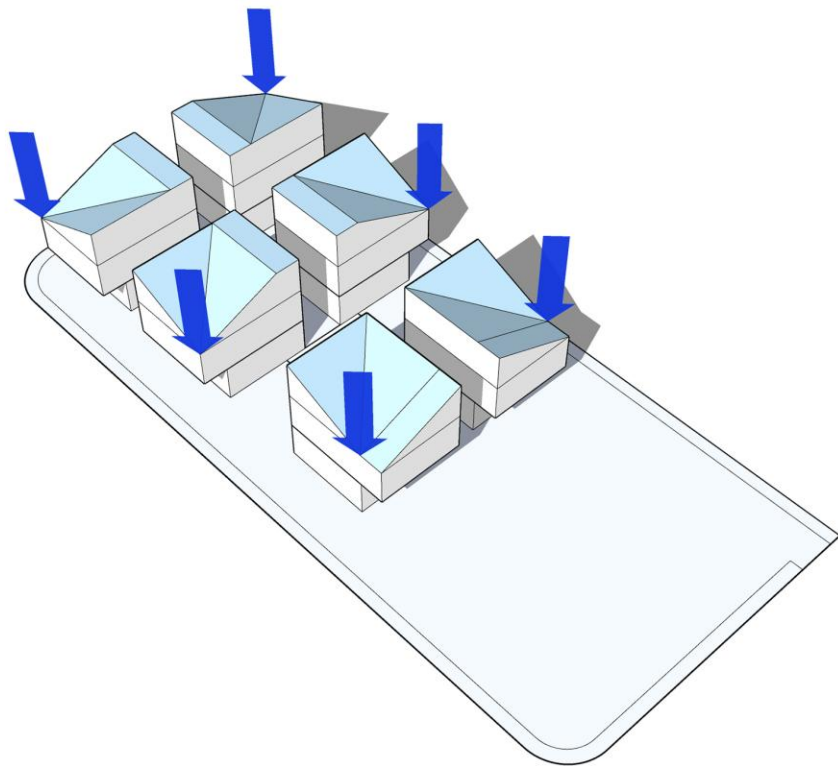
Central courtyard

Moving the modules to create a central courtyard (7 x 7 meters) in the middle of the open path designed with the use of a filter at the entrance to the villa



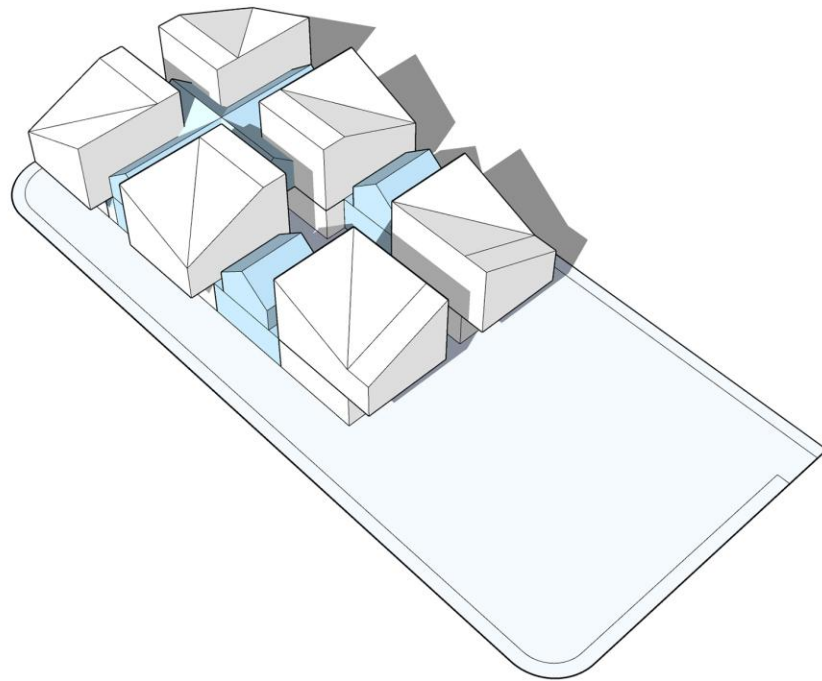
Changing dimensions

Changing the dimensions of the square module on the first floor to adapt the plan to the Client's needs



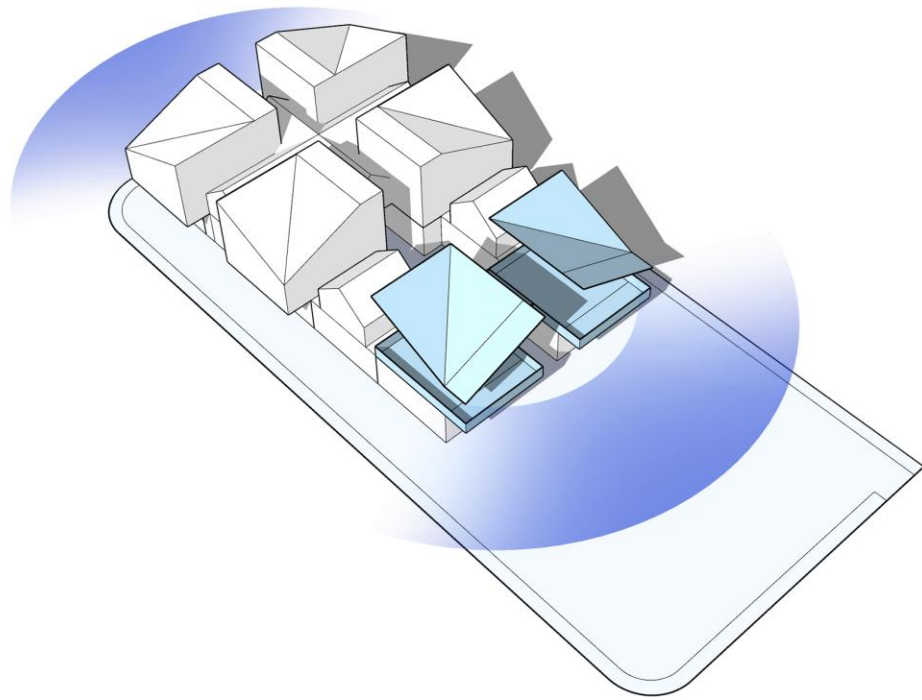
Sloping roof

Converting the roof of the modules into a sloping roof by changing the height of the cube corner



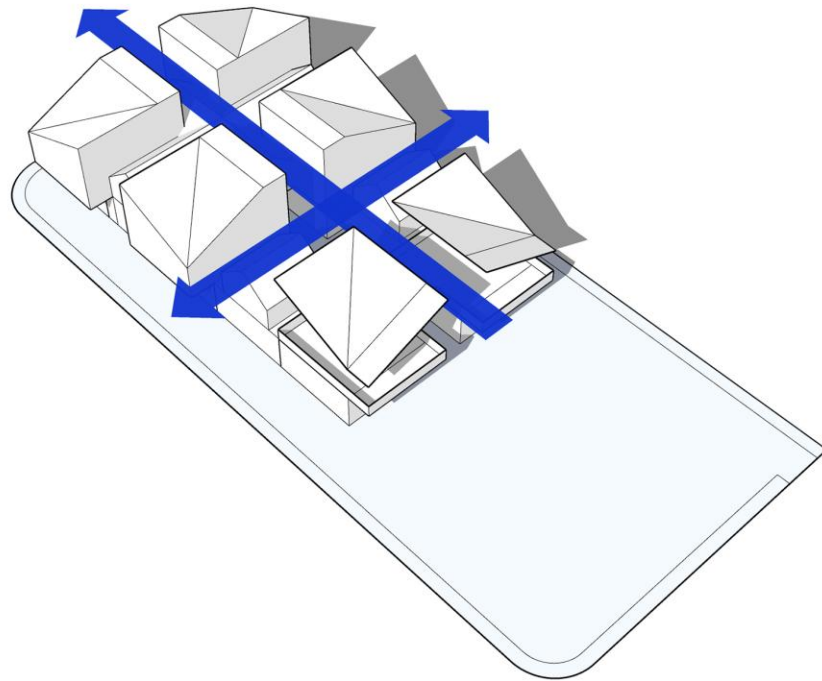
Intermediate Masses

Adding intermediate masses between the cubic modules and creating connections between the main cubes



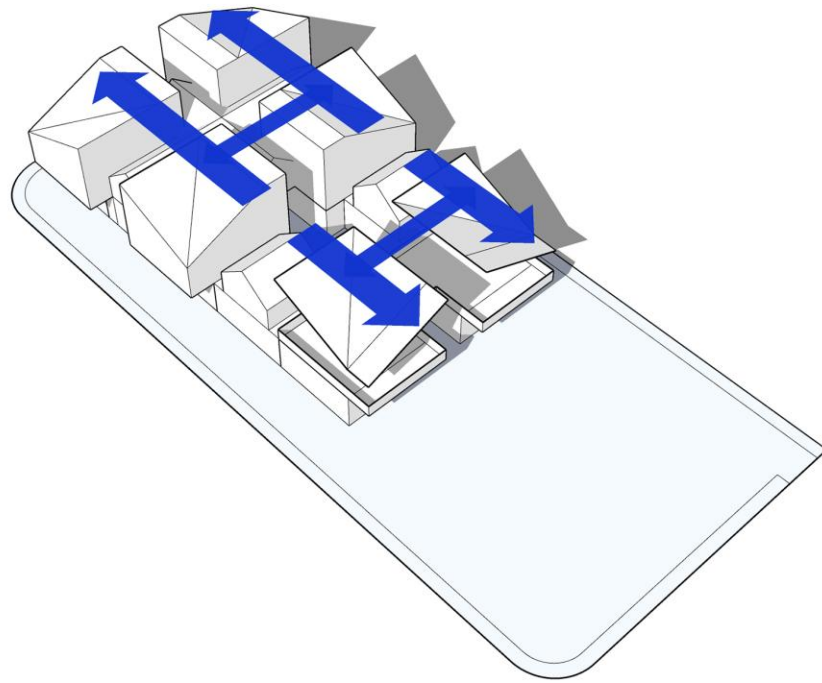
Terraces

Creating a semi-open space (terrace) on the ground floor facing the exterior of the villa and on the first floor facing the southern mountains.



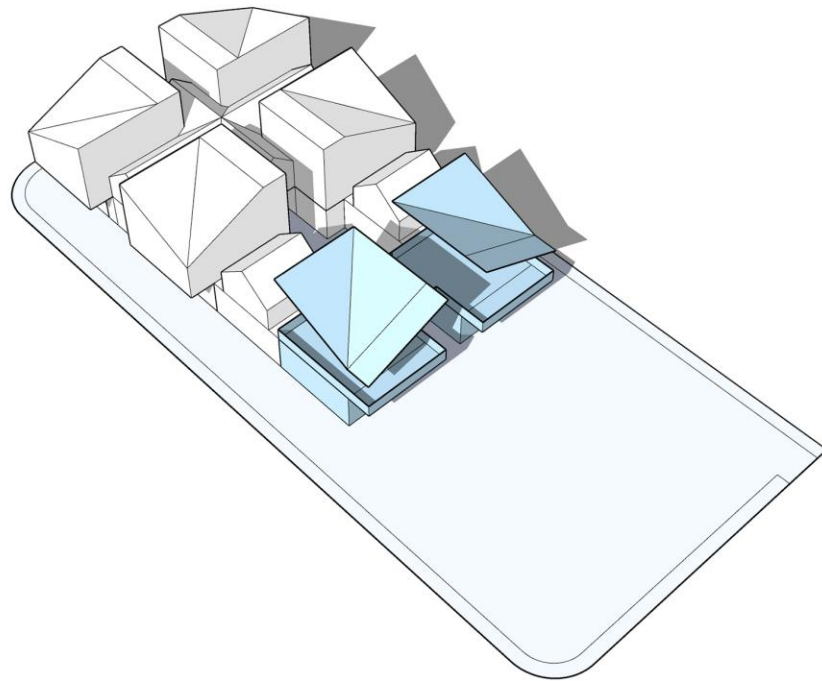
External circulation

The main circulation path is through the middle of the volume and access to the villa entrance.



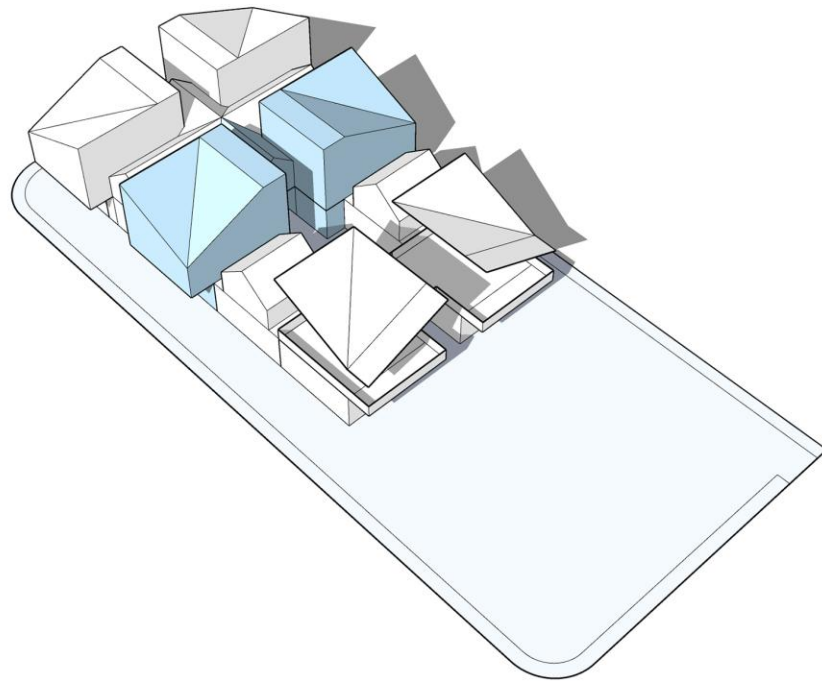
Internal circulation

The main circulation path through the mass between the square modules and also the connection between the modules through the semi-open path in the middle of the mass.



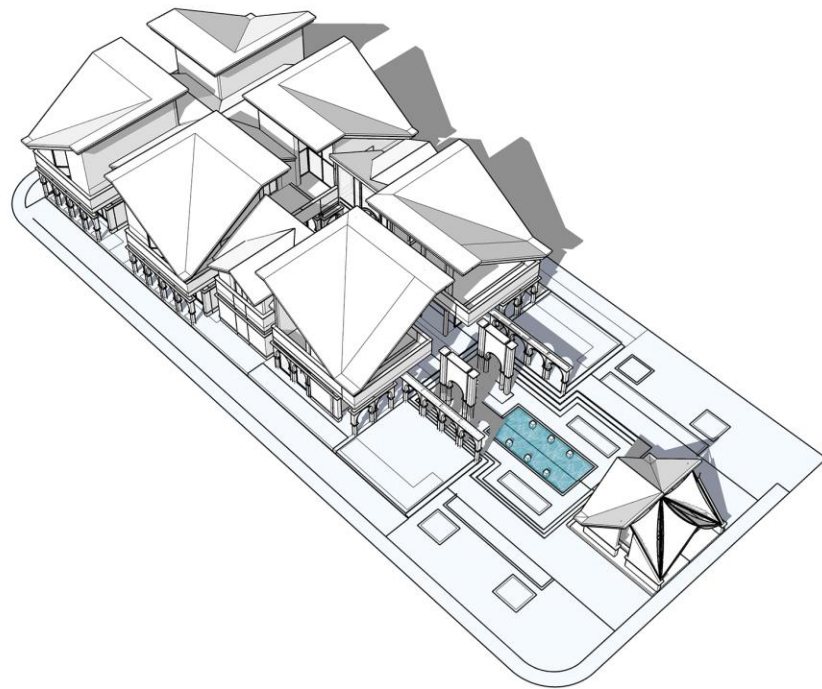
Connections and Flexibility

Possibility of integrating modules and dual use of modules if necessary by opening glass walls and creating flexible spaces



Connections and Flexibility

Possibility of integrating modules and dual use of modules if necessary by opening glass walls and creating flexible spaces



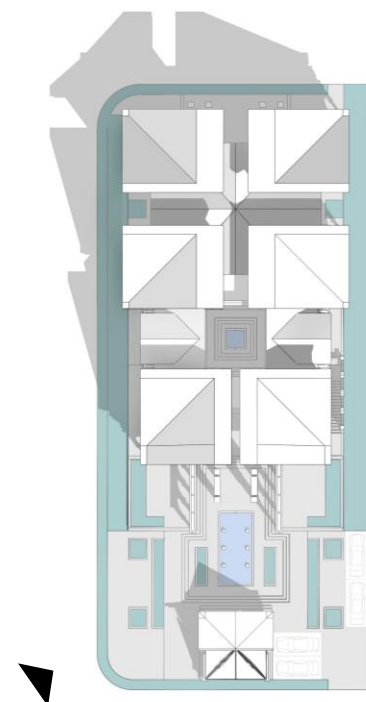
Final Form

Design of arches in walls, landscaping and design of facade details

این ویلا تلاشی است برای گفت‌وگویی میان گذشته و امروز، جایی میان صلابت کلاسیک و سادگی مدرن. مسیر میانی آن از جنوب تا شمال امتداد یافته تا ورود به بنا، تجربه‌ای تدریجی از کشف و درک فضا باشد. در آغاز این مسیر، حیاط مرکزی به‌عنوان فیلتر ورودی عمل می‌کند و لحظه‌ای مکث و آمادگی برای ورود به فضای اصلی را می‌آفریند. هم در بیرون و هم در داخل، چه در فرم و چه در عملکرد، تلاش شده تا دائماً یک دوگانگی میان مدرن و کلاسیک برقرار باشد. توده‌ای از شش مدول مکعبی با سقف‌های شیبدار، همچون واحدهایی تکرارشونده، هویتی خوانا و به‌یادماندنی برای بنا ساخته‌اند. درون ویلا، فضاها با دیوارهای شفاف به هم می‌پیوندند و هر لحظه می‌توانند شکل تازه‌ای به خود بگیرند؛ گاهی صمیمی و کوچک، گاهی باز و گسترده. در نهایت، تراس جنوبی با چشم‌اندازی به کوه‌ها و حیاط، نقطه‌ای آرامش و پایان این سفر فضایی است.

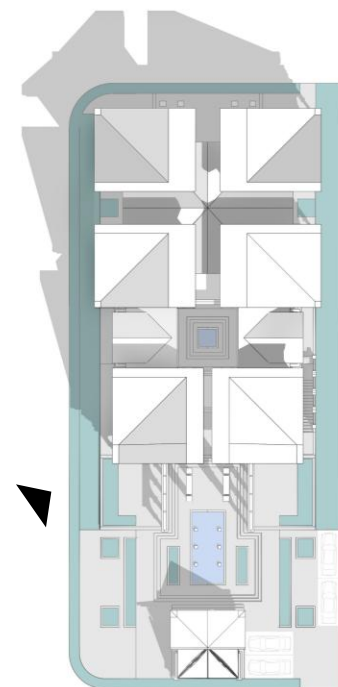
This villa is an attempt to create a dialogue between the past and the present — a place between classical solidity and modern simplicity. A central path runs from south to north, turning the act of entering into a gradual journey of discovery. At the beginning of this path lies a central courtyard that acts as a threshold — a moment of pause and preparation before entering the main space. Both externally and internally, in form and function, a continuous duality between modern and classical has been pursued. The composition of six cubic modules with pitched roofs gives the villa a clear and memorable identity. Inside, spaces connect through transparent walls, constantly transforming — sometimes intimate and enclosed, sometimes open and expansive. Finally, the southern terrace, with its view toward the mountains and the garden, becomes the moment of calm that completes this spatial journey.

03: Outside



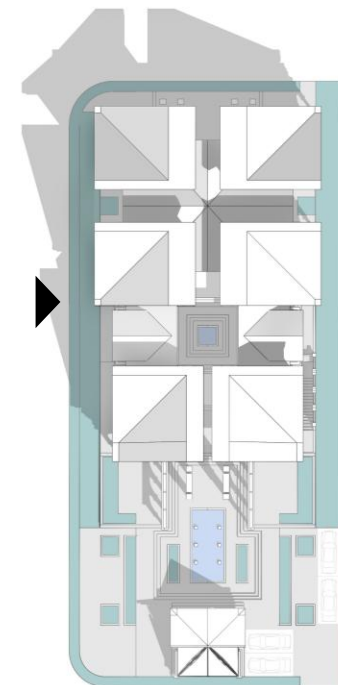
Southwest view

View of the entire villa from the southwest side



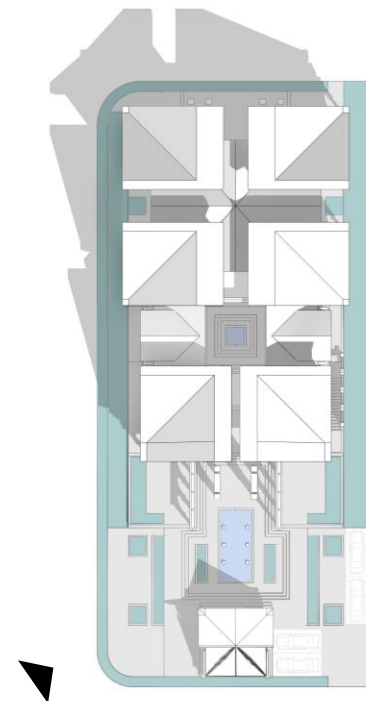
Southwest view

View of the villa building from the southwest



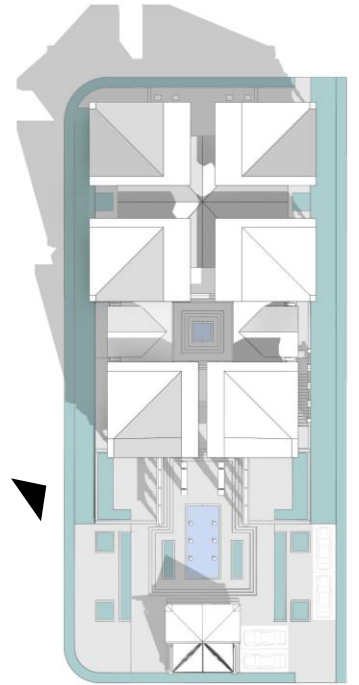
Western view

Western view and villa facade

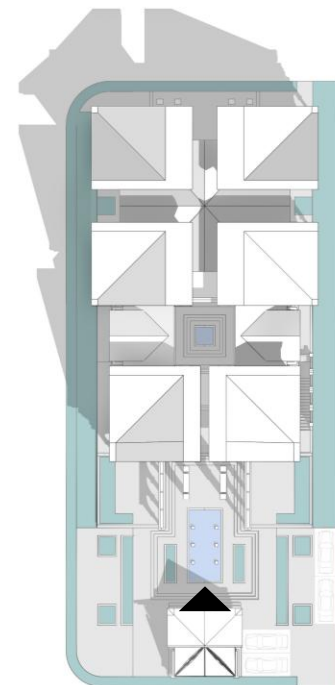


Southwest view

View of the entire villa from the southwest side

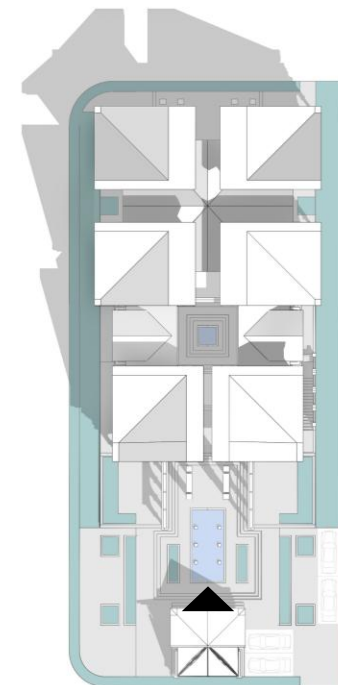


Southwest view
View of the entire villa from the southwest side



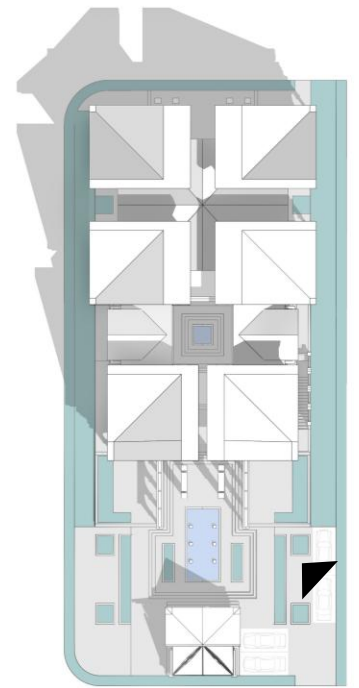
South view

South view of the villa from inside the south courtyard



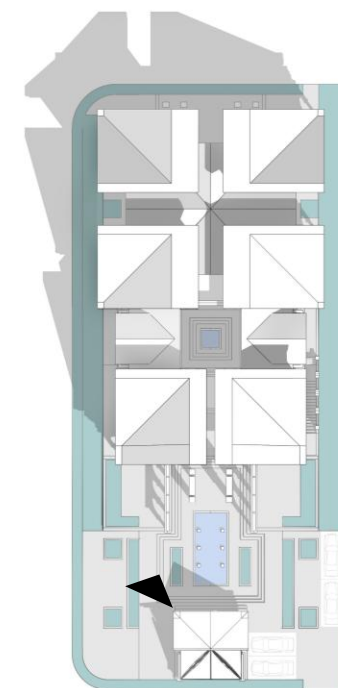
South view

South view of the villa from inside the south courtyard



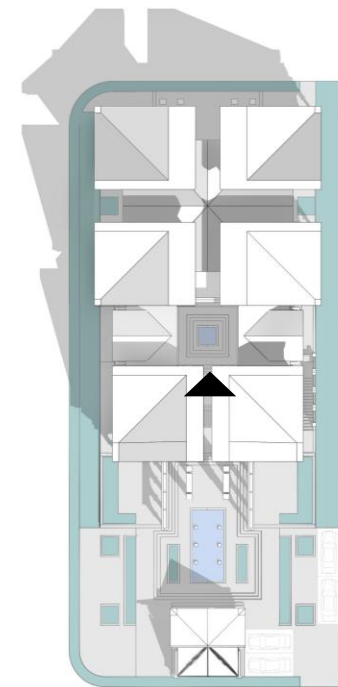
Villa from the entrance

View of the villa from the entrance to the courtyard



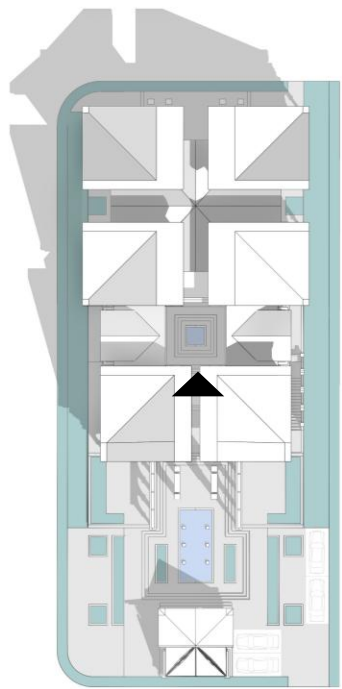
South view

South view of the villa from inside the south courtyard

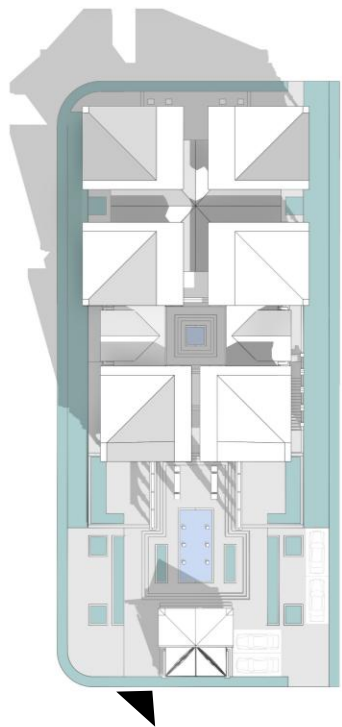


Central courtyard

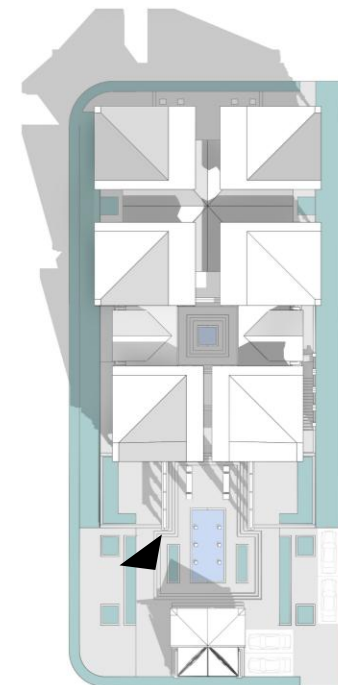
View of the central courtyard and view towards the end of the path and outside the villa



Central courtyard
View of the central courtyard and view towards
the end of the path and outside the villa

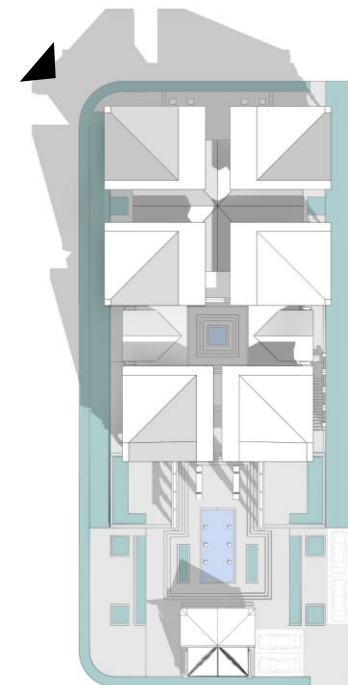


Gazebo
Southwest view towards gazebo and villa facade



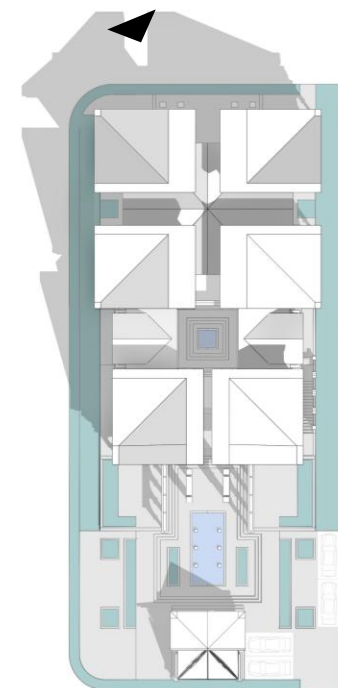
Gazebo

View from the yard to the gazebo



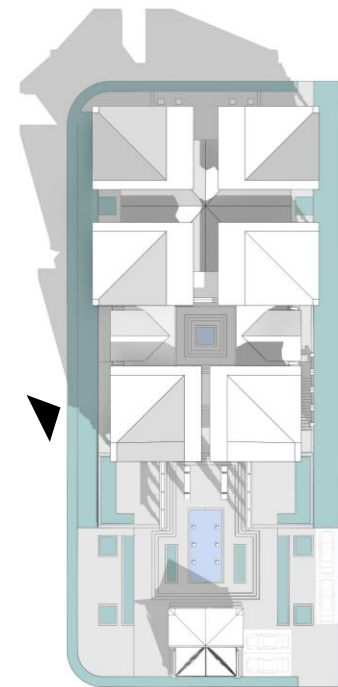
Northwest View

View of the main facade of the villa from the northwest side

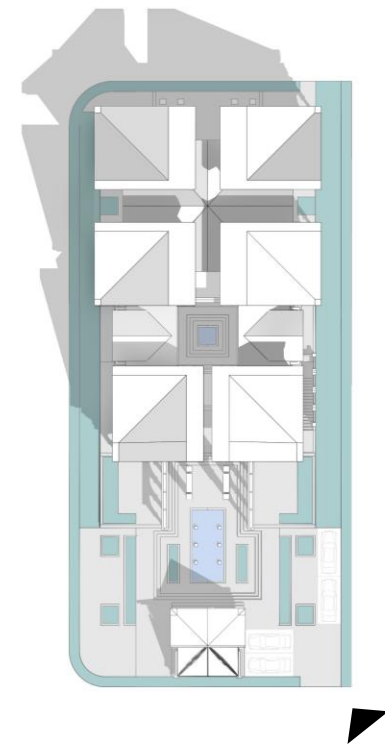


North View

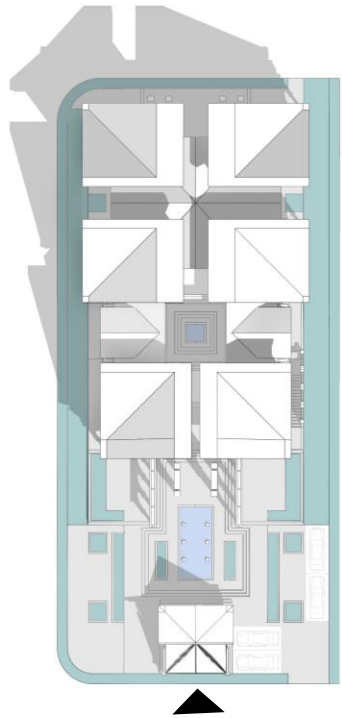
View of the north view of the villa from the square



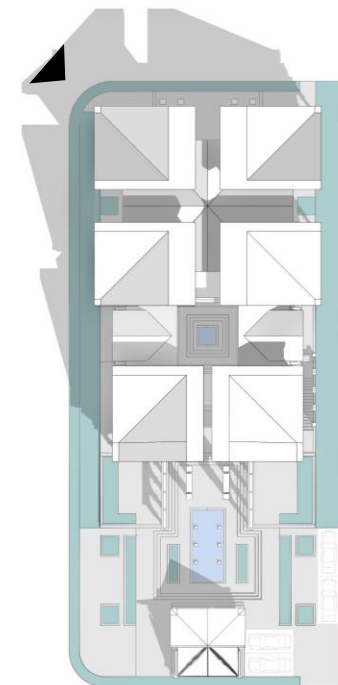
West view
Zoom and details of the facade



Bird's eye view
Bird's eye view from the southeast



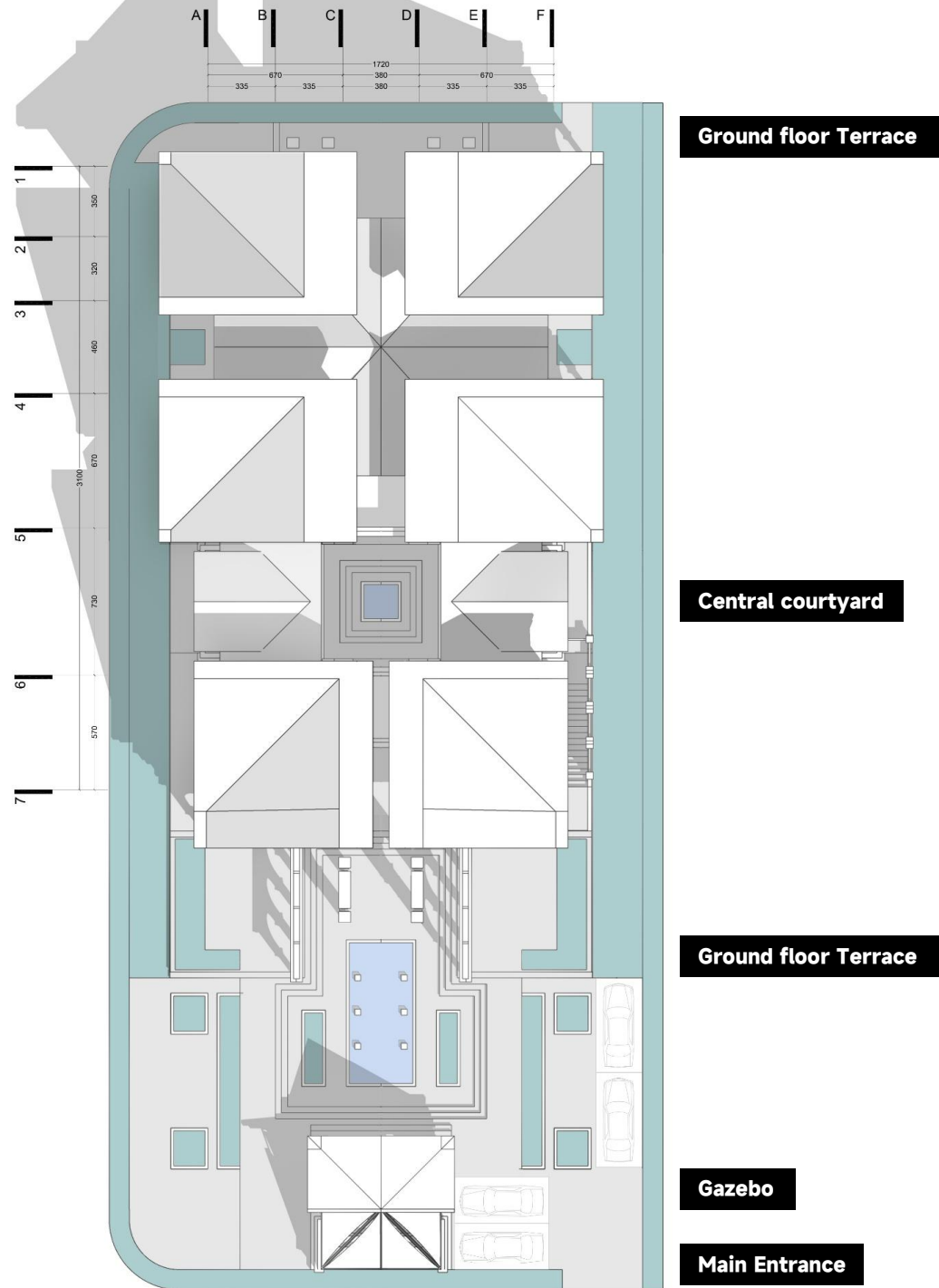
Bird's eye view
Bird's eye view from the south and southwest



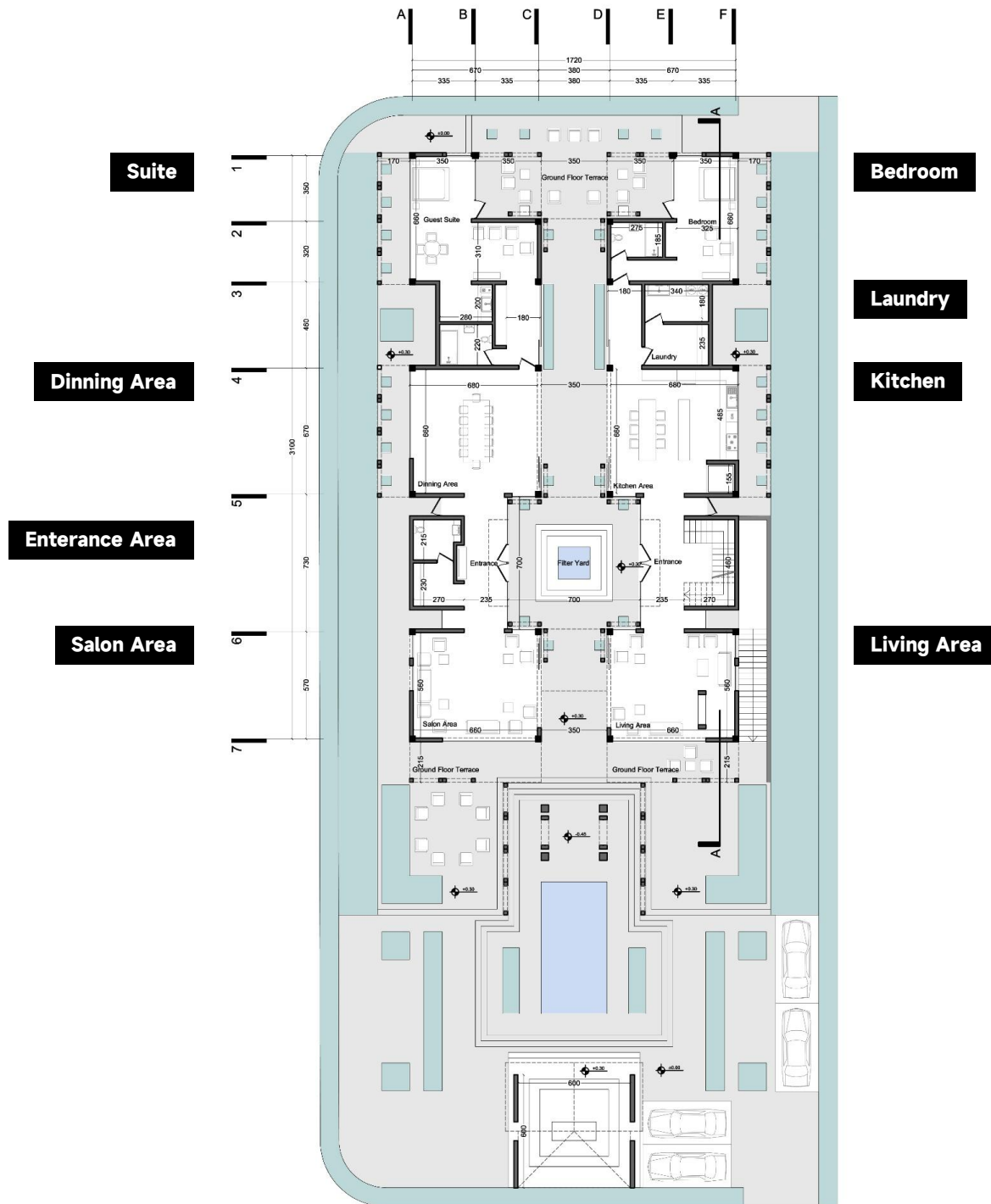
Bird's eye view

Bird's eye view from the northwest

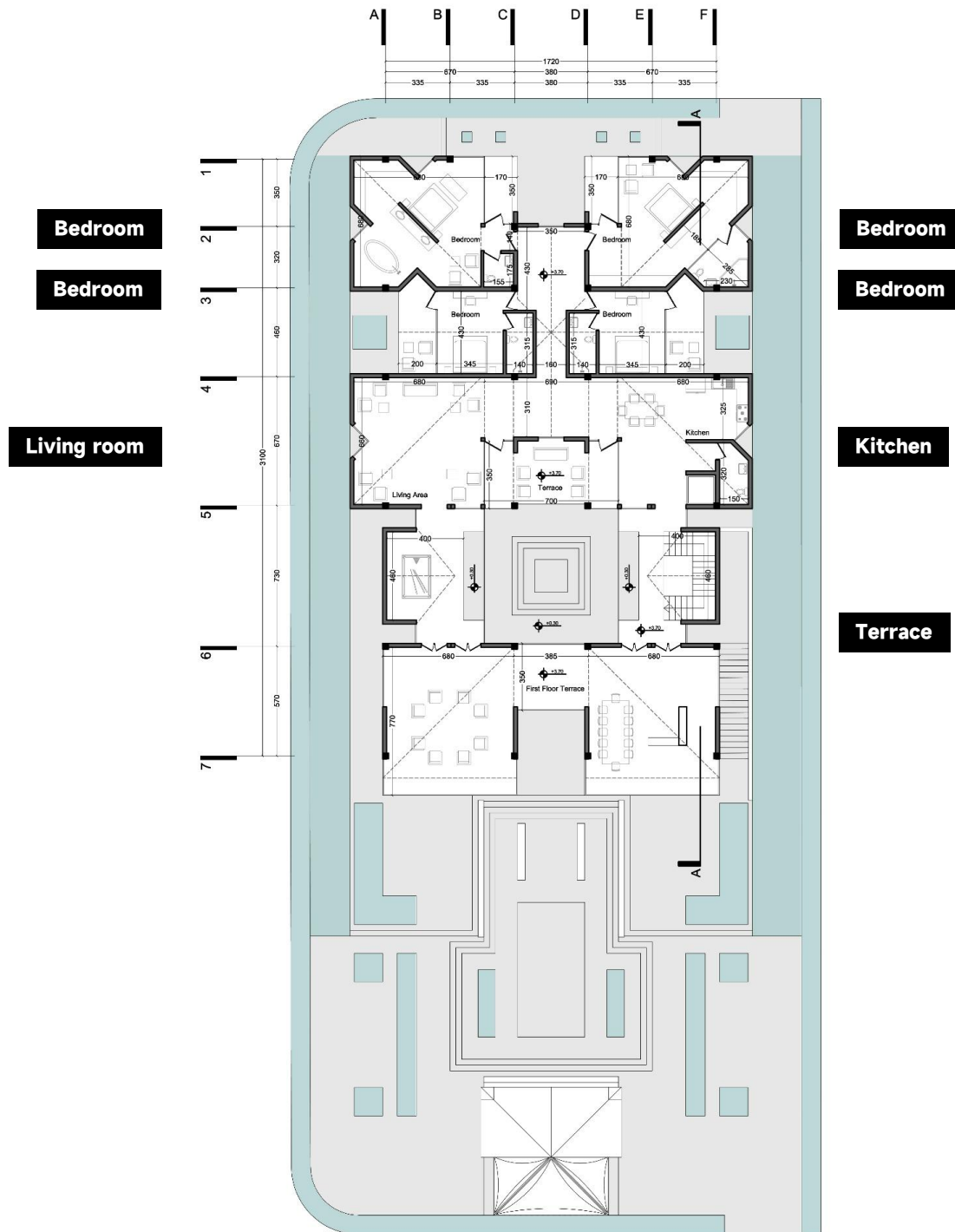
04: Plans/Section



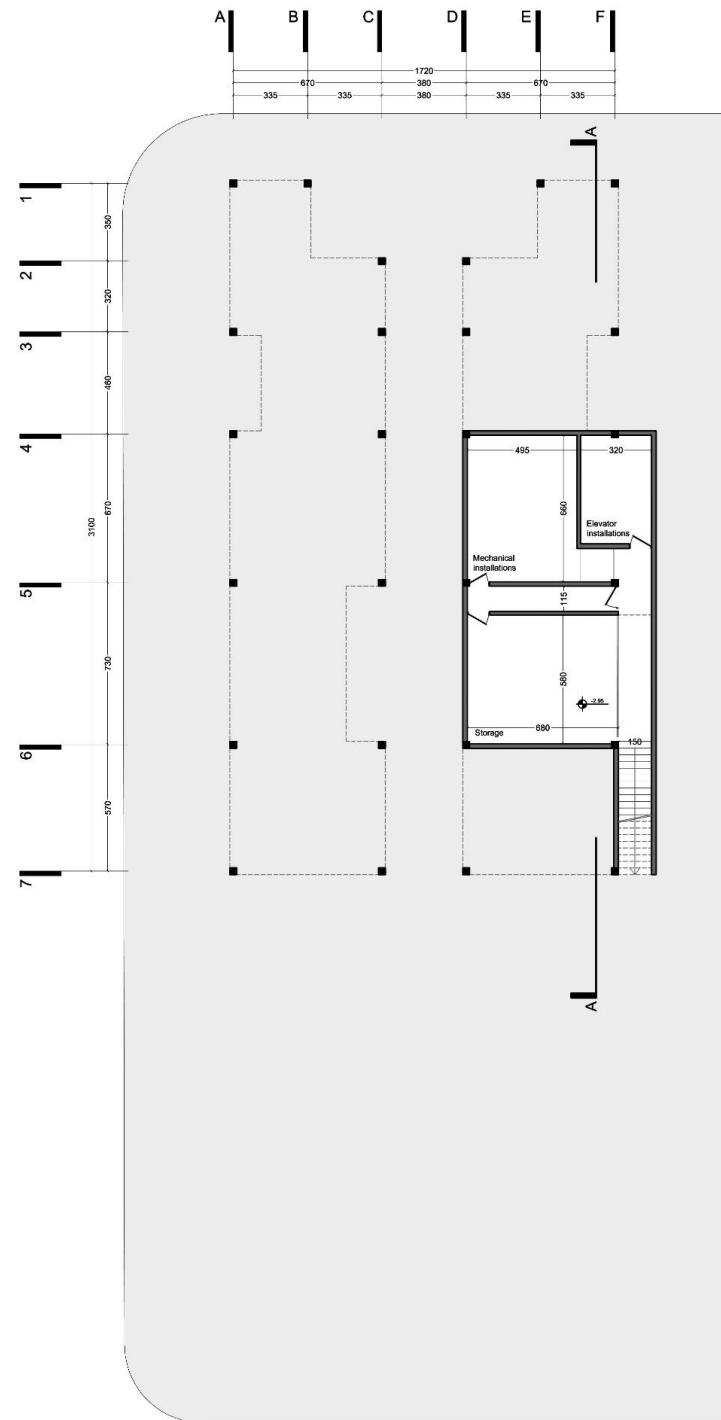
Site Plan



Ground Floor Plan



First Floor Plan



Elevator Installations

Mechanical Installations

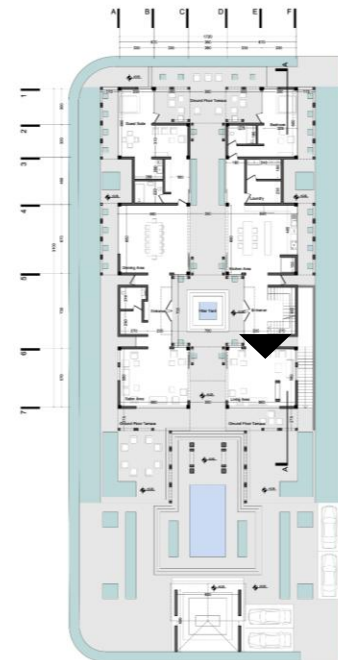
Storage

Basement Plan

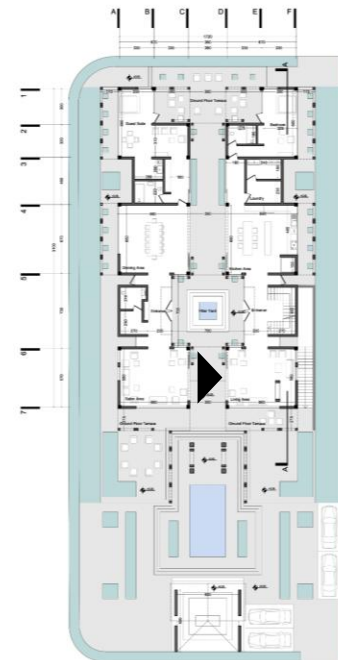


Section

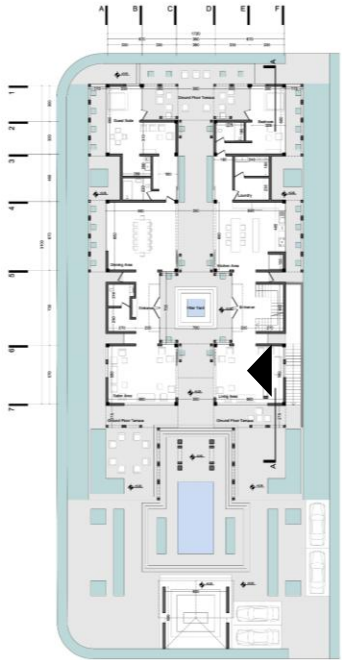
05: Inside



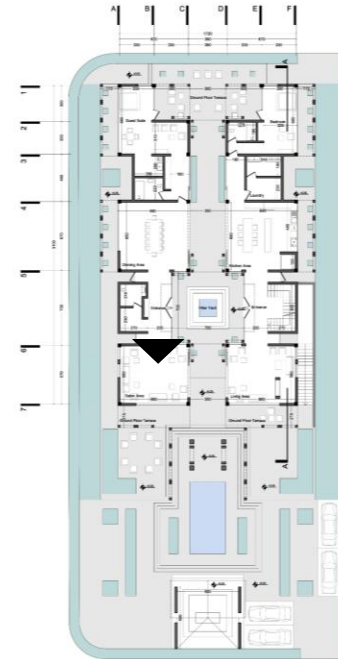
Ground floor
Living Area



Ground floor
Living Area



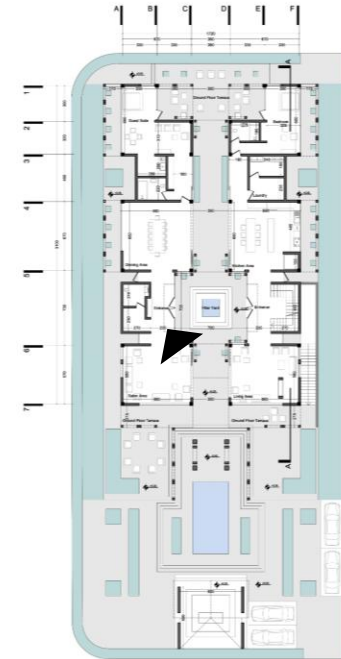
Ground floor Living area
The integration of the living area and the salon area



Ground floor
Salon Area



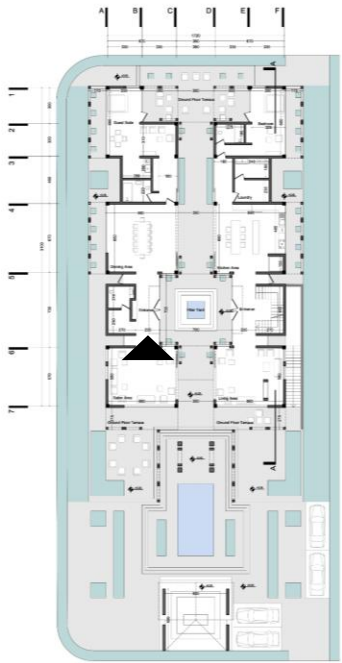
Ground floor
Salon Area



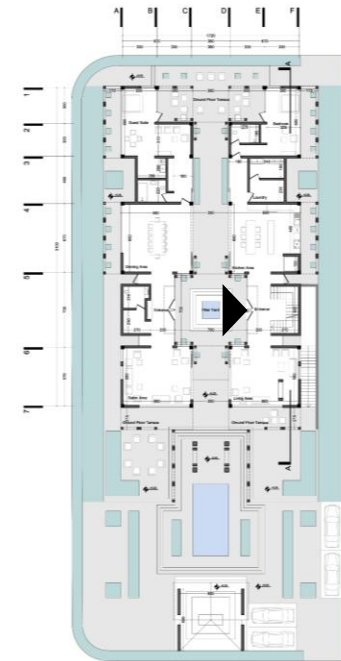
Main entrance
Entrance and guest closet



Main entrance
Entrance and guest closet

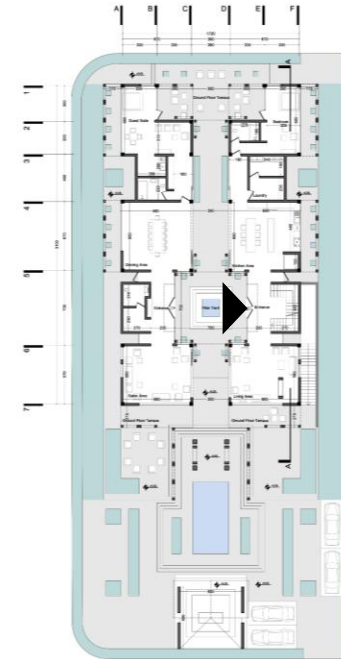


Main entrance
Entrance and guest closet



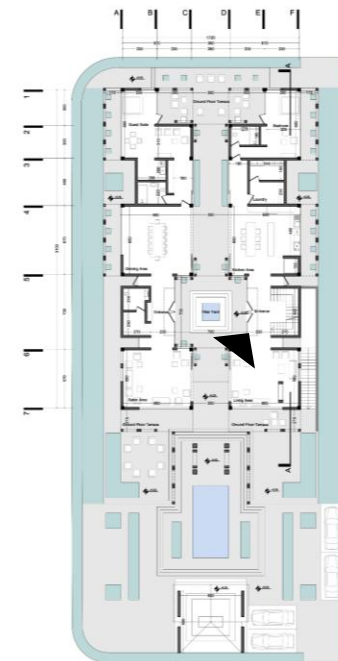
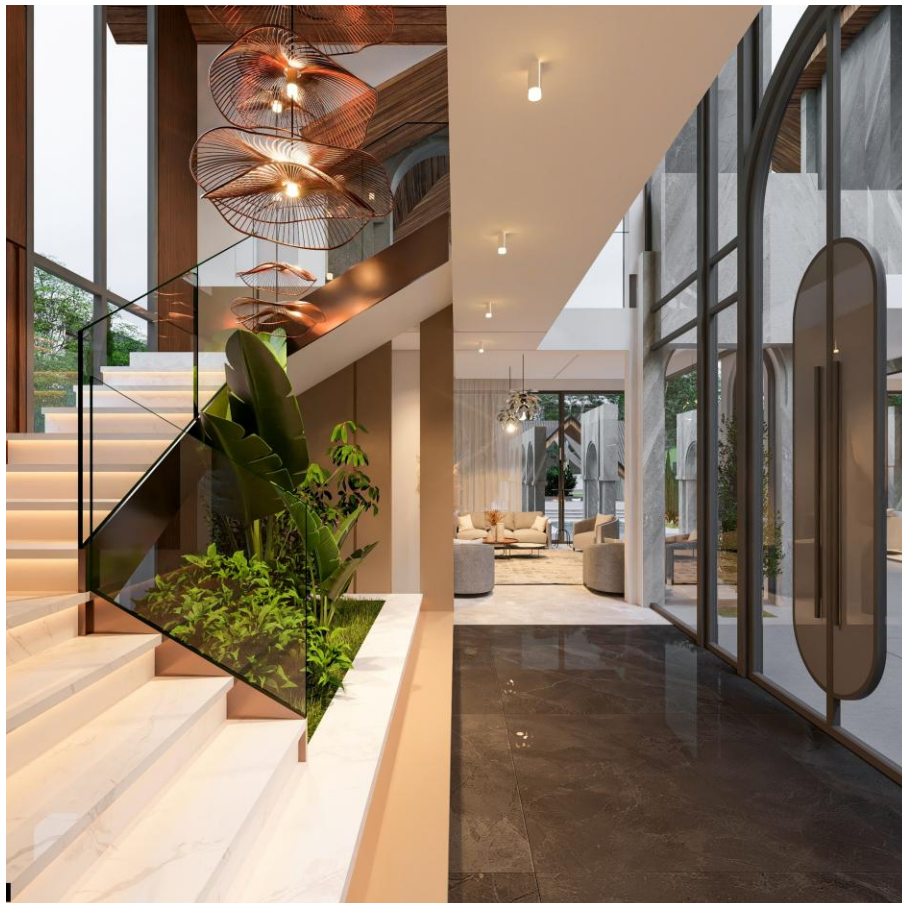
Stairs

Decorative stairs at the main entrance



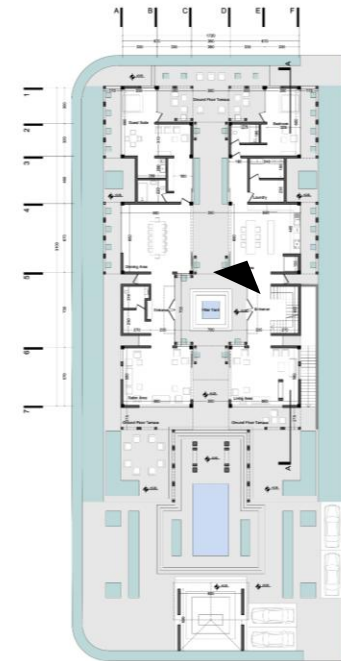
Stairs

Decorative stairs at the main entrance

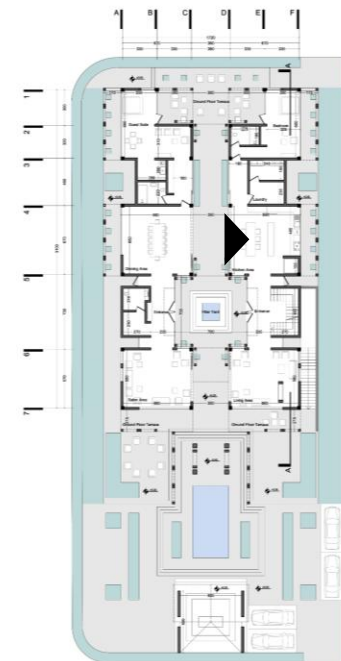


Stairs

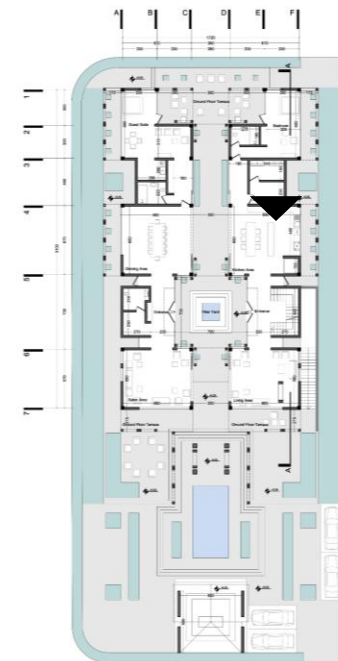
Decorative stairs at the main entrance



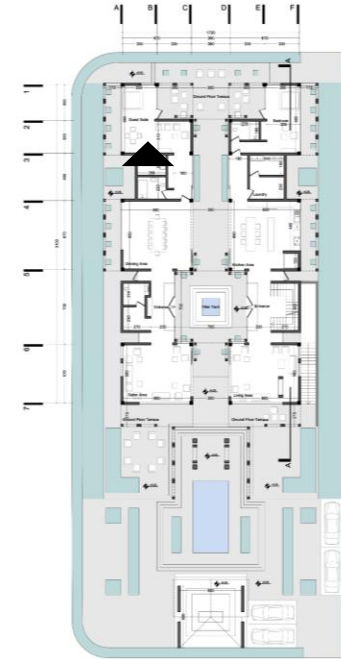
Ground floor kitchen
The main kitchen of the villa



Ground floor kitchen
The main kitchen of the villa

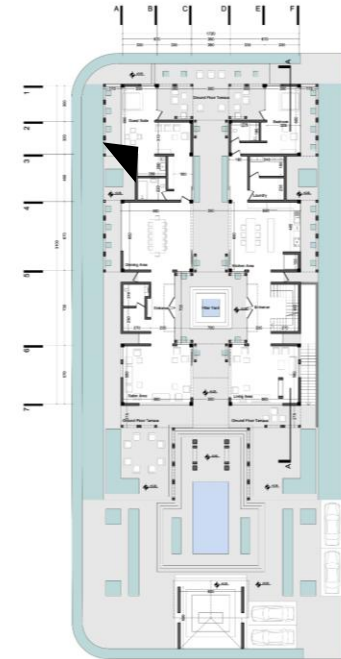


Ground floor kitchen
Cooking space in the main kitchen



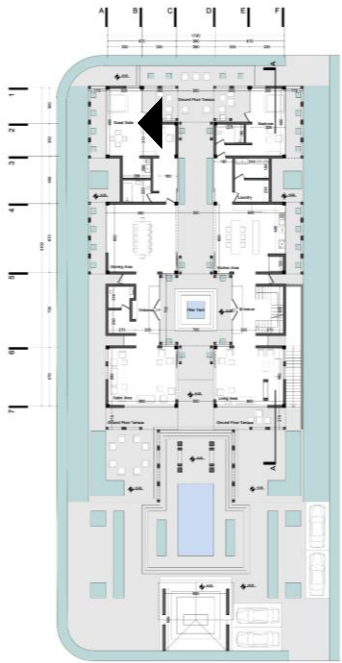
Guest Suite

Guest Suite on the Ground Floor

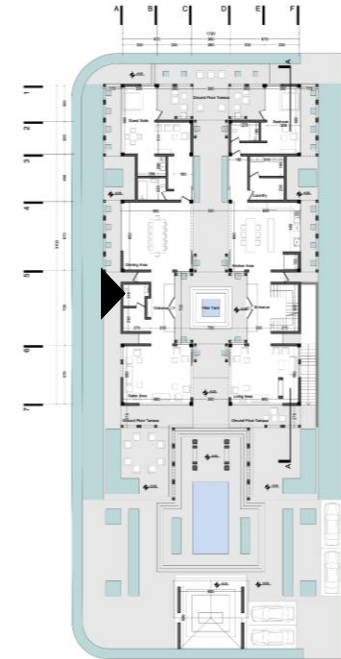


Guest Suite

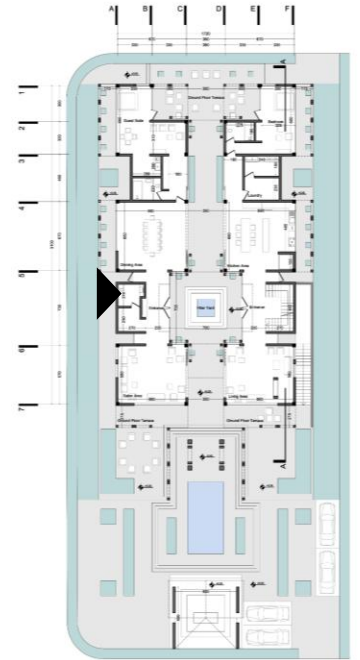
Guest Suite on the Ground Floor



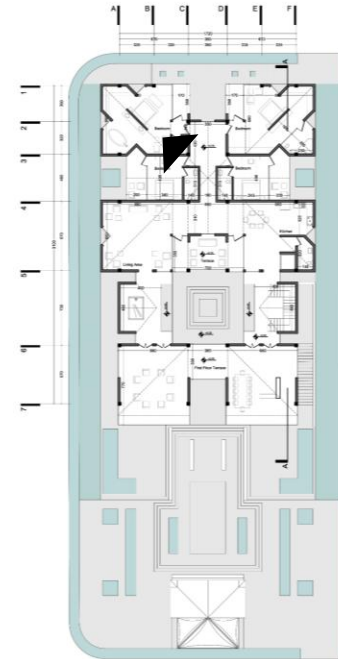
Guest Suite
Guest Suite on the Ground Floor



Guest bathroom
Guest bathroom on the Ground Floor

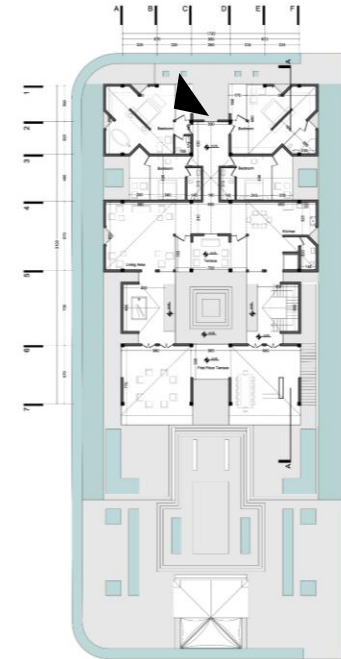


Guest bathroom
Guest bathroom on the Ground Floor



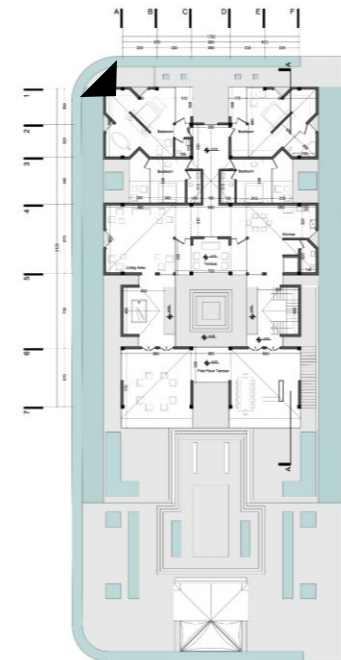
Master Bedroom

Master bedroom from the entrance side



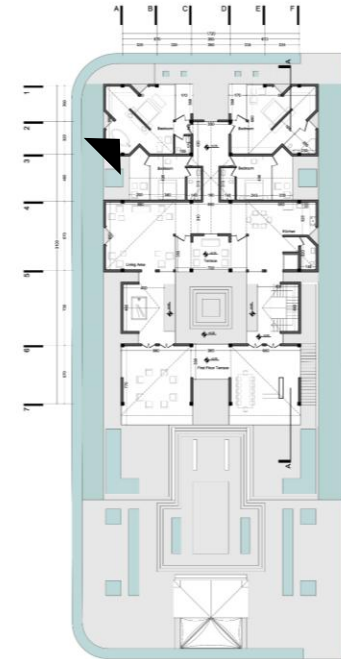
Master Bedroom

Master bedroom from the terrace side



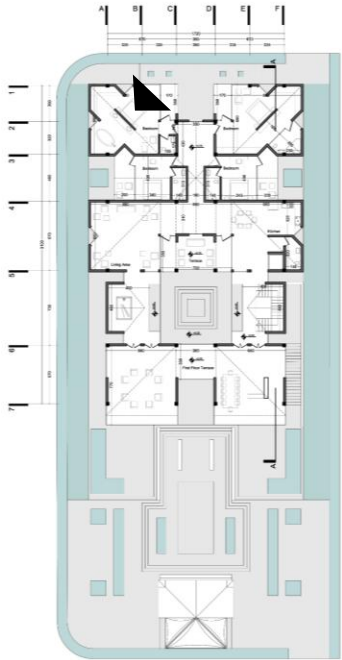
Master Bedroom

Master bedroom from the closet side

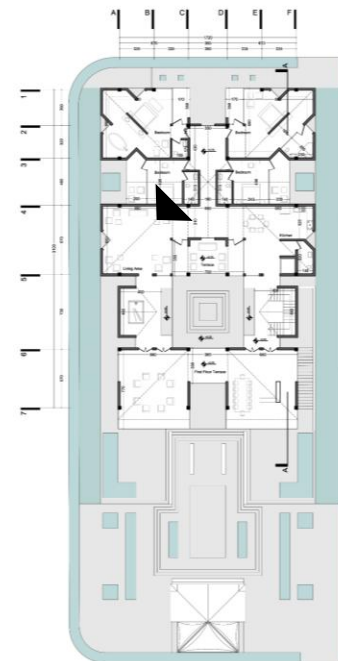


Master Bedroom

Master bedroom from the bath side

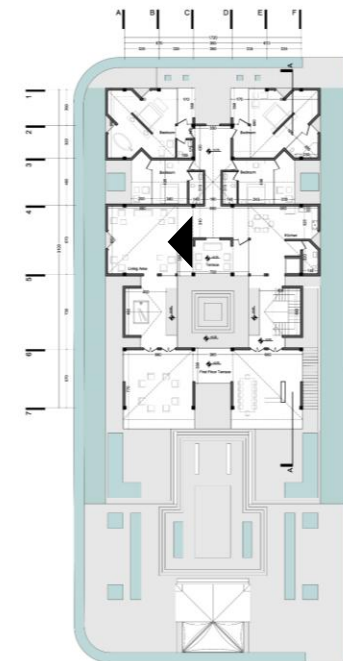


Master Bedroom
Master bedroom from the window side



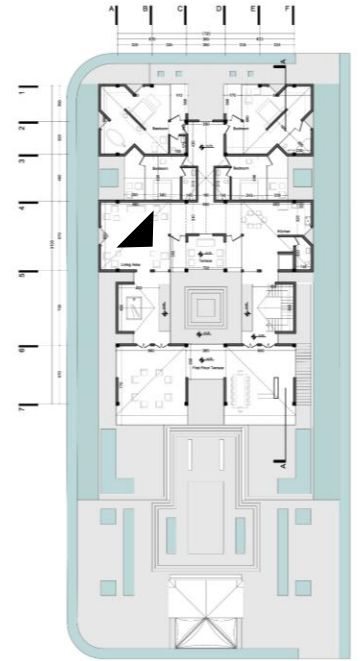
First floor Living room

First floor living room and the impact of a sloping ceiling on the quality of the space



First floor Living room

First floor living room and the impact of a sloping ceiling on the quality of the space



First floor Living room

First floor living room and the impact of a sloping ceiling on the quality of the space

Thank you