



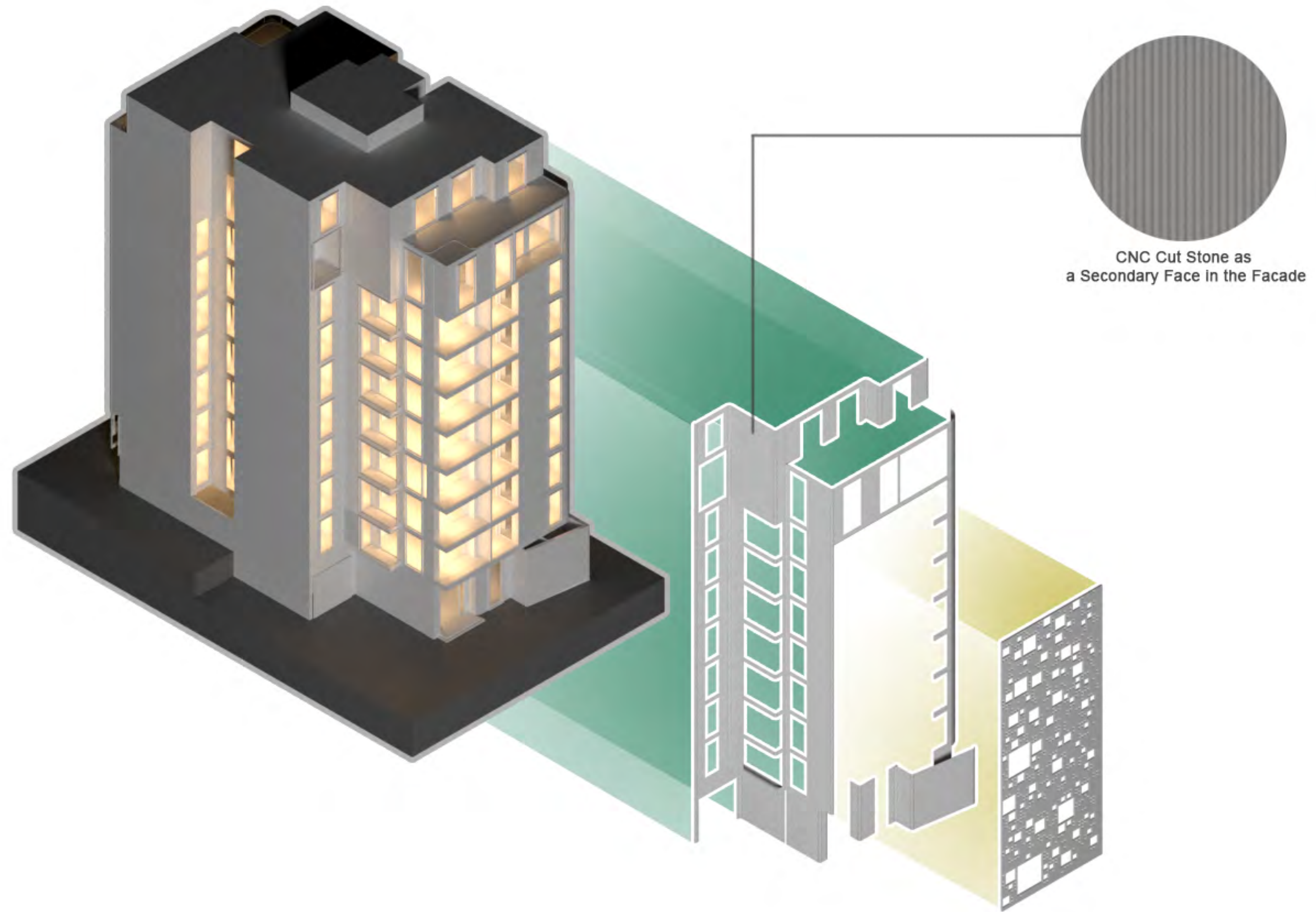
the ARG FARMANIEH

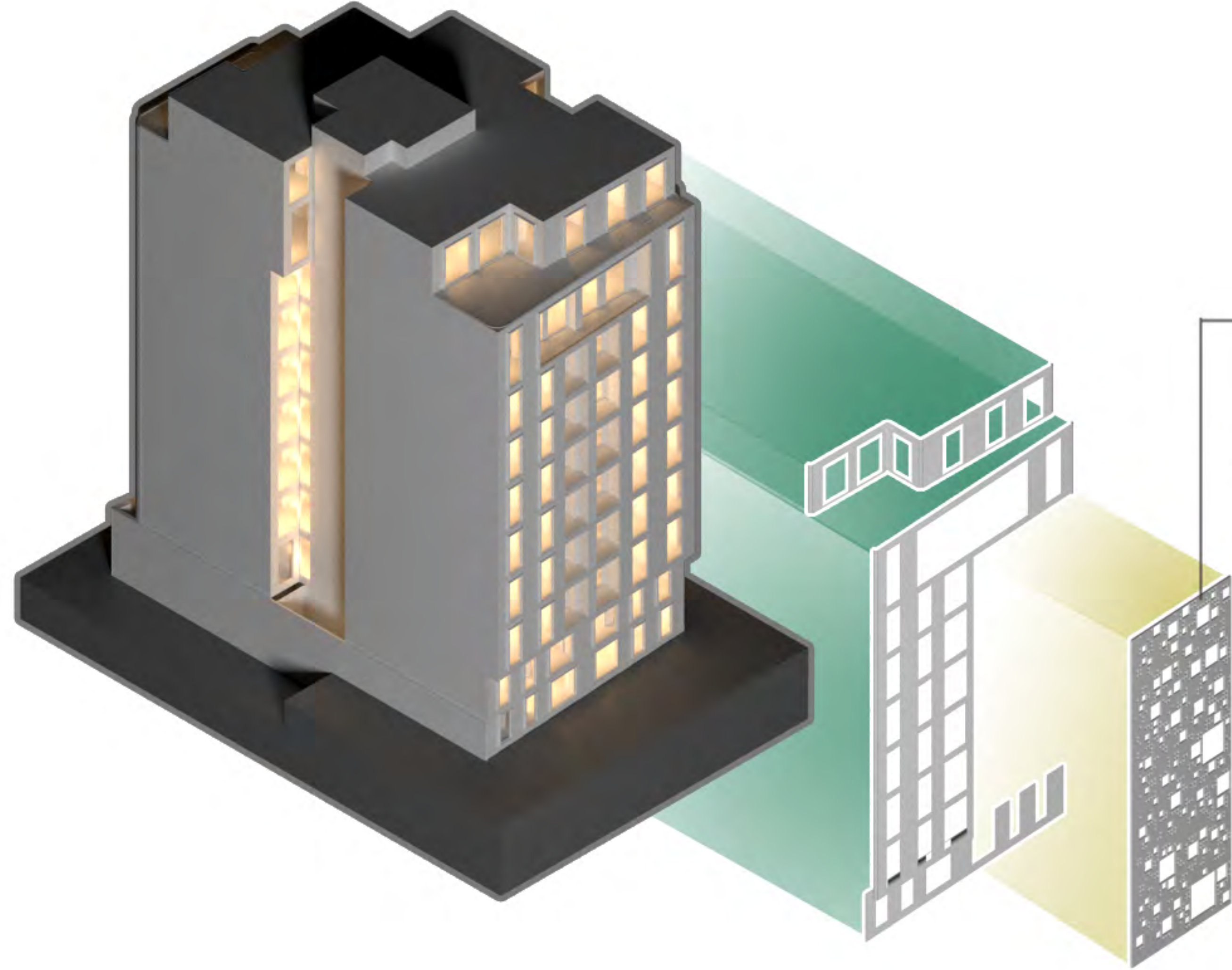
In urban life, human spirit always feels the absence of the visual beauty found in nature. To address this issue within the constraints, we attempted to reduce this problem by creating an initial framework. Firstly, we controlled the perception of residents in the residential complex. Then, by integrating this framework with natural plants, we aimed to create visual beauty resulting from the presence of greenery in the exterior facade.

Creating this initial framework and merging it with natural plants allows individuals who choose urban living to experience a sense of privacy through a green wall in their living environment. This framework not only separates their living environment from the hustle and bustle of the city but also enhances their visual perception of the surrounding environment by filtering and improving the imagery.

Furthermore, we faced a limitation in this project, which was the separation of the design process between the plan and volume of the complex and its exterior view. This challenge compelled us to enter a design process that enables us to have a positive impact, albeit small, on the overall design of the complex. With this in mind, our main endeavor was to add a feature to this complex while harmonizing it with the existing plan and volume.

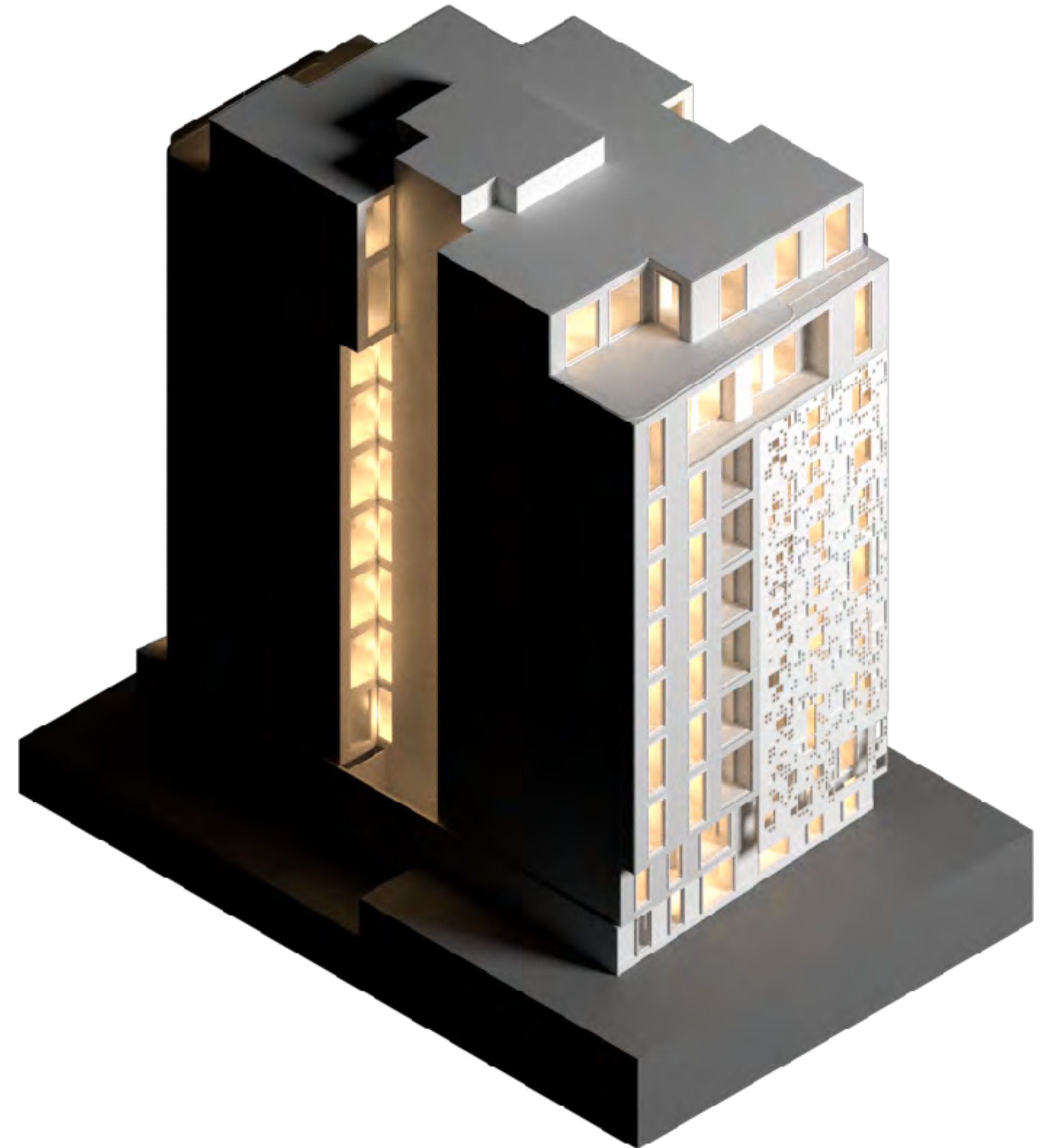
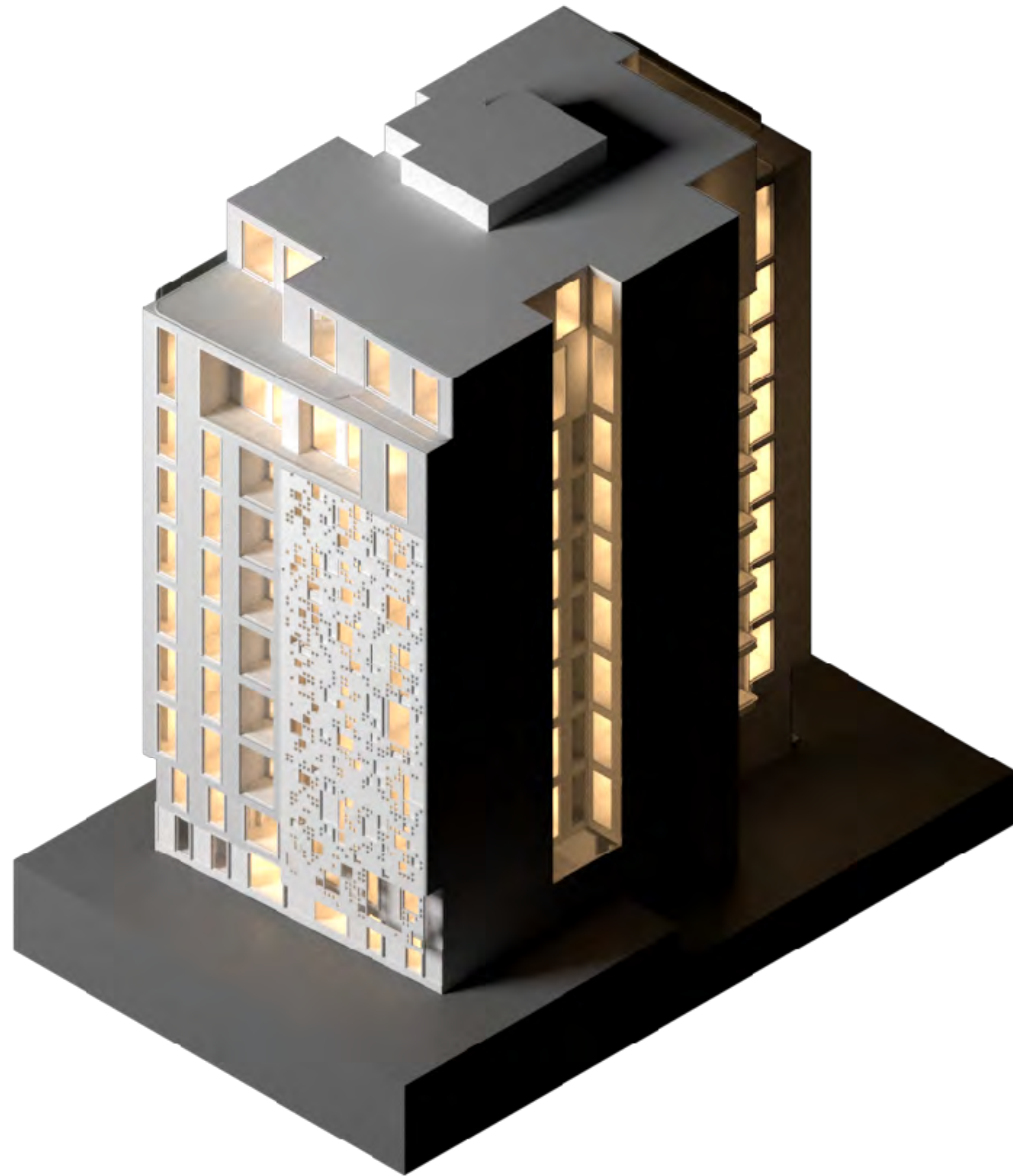
Diagram



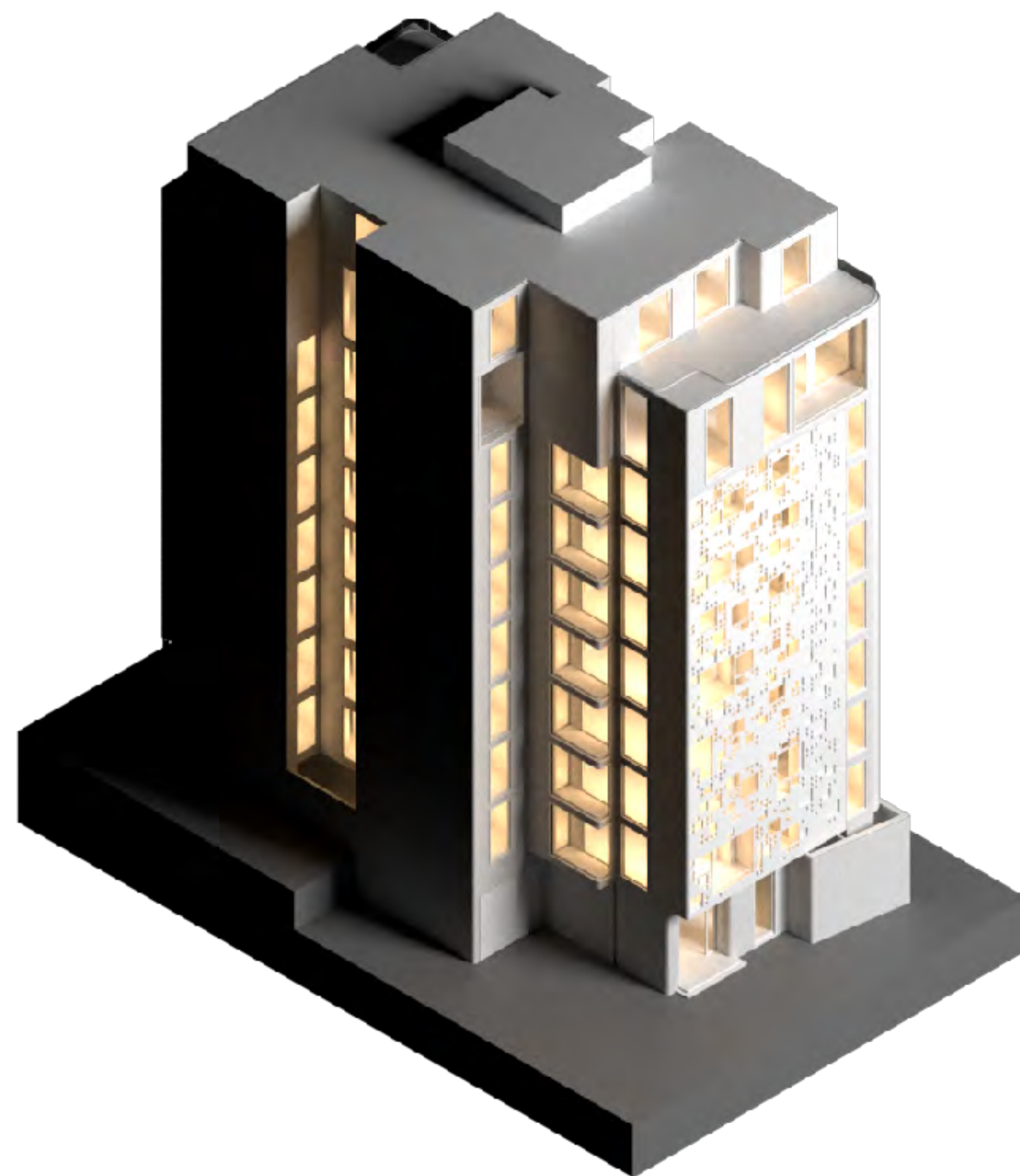
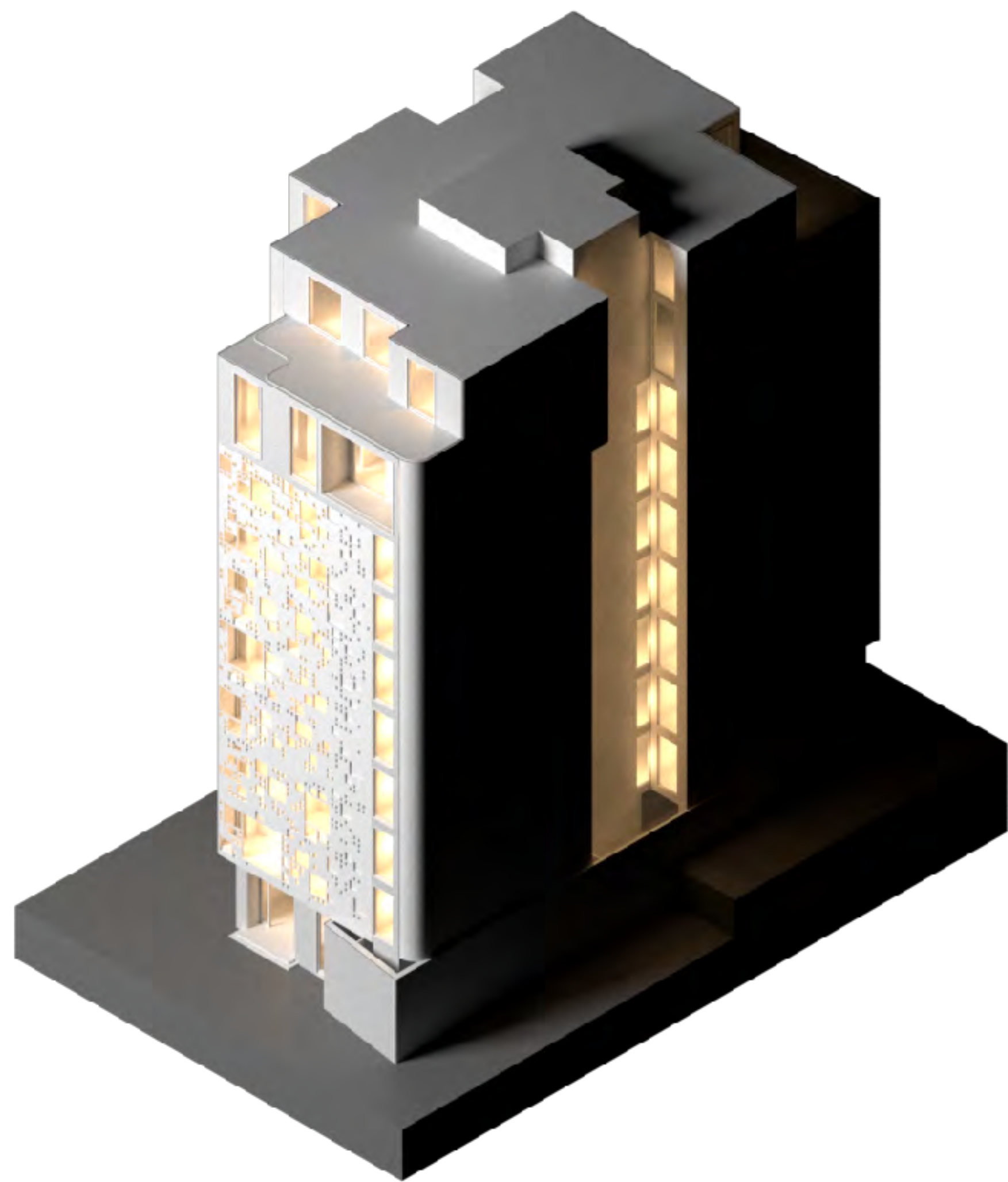


The Main Facade is Made with
Micro-Cement Material and White Color

Raw Render



North Facade



South Facade

