



APEX

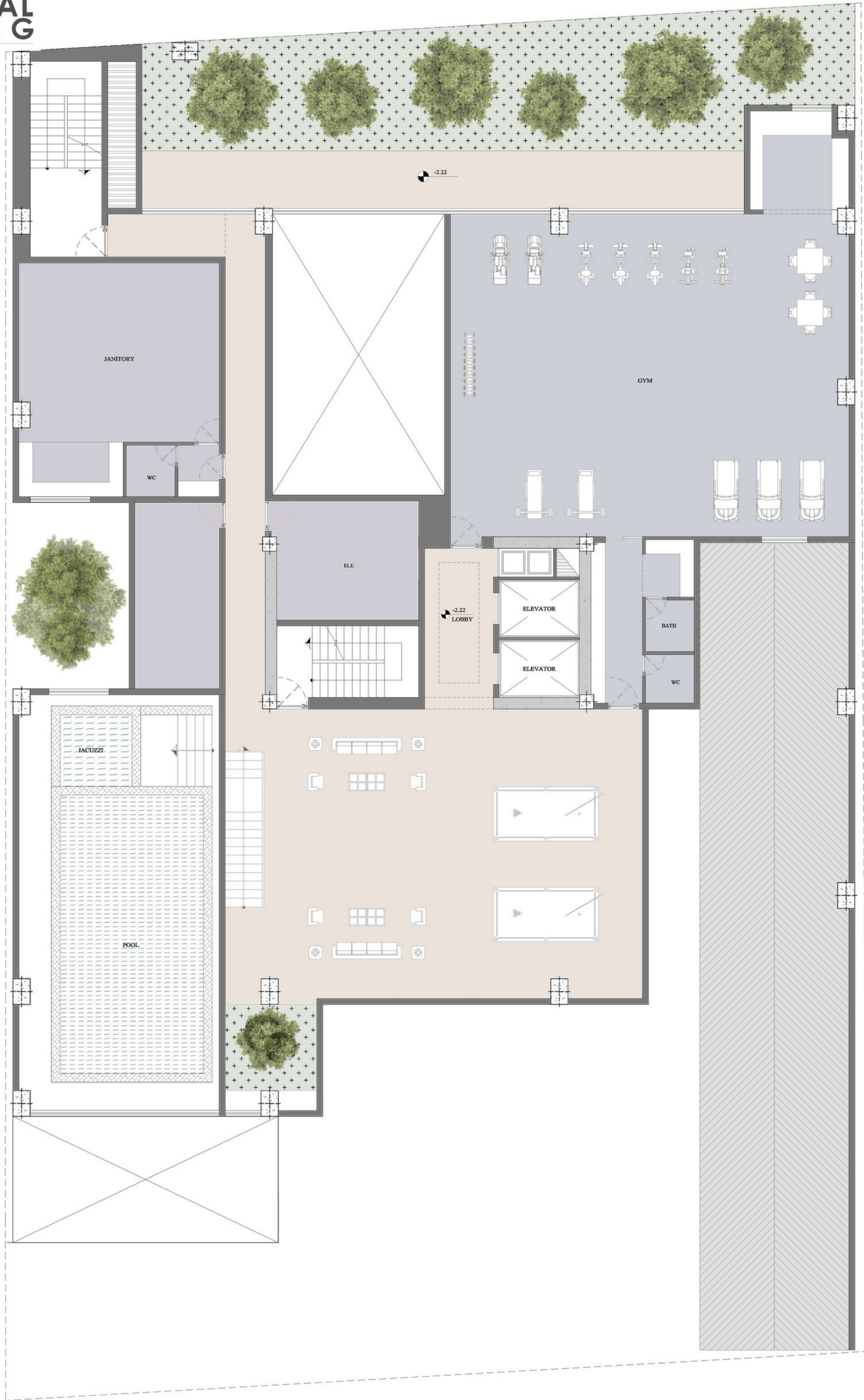
RESIDENTIAL BUILDING

Urban Apartments are frequently praised for their clean lines of space, but what of their approach to color? Thoughtful incorporation of color is more than an aesthetic decision; it has the potential to shape emotional responses, influence mood, and create spatial illusion. Research in psychology shows that colors through the social, cultural, and psychological reactors, making them the design tools. Variations of blue, for instance, have been shown to slow melatonin production, keeping people more alert, while shades of green reduce strain on our nervous systems, helping us feel calmer and more relaxed. Color in architectural spaces can even alter our perception, creating an illusion of depth, movement, and texture that influence how we explore space. Cool whites and greens, for example, appear taller and more expansive.



GROUND FLOOR PLAN

- ⌘ Lobby
- ⌘ MANAGER ROOM
- ⌘ MEETING ROOM
- ⌘ Cafe
- ⌘ CINEMA



**-1 BASEMENT
PLAN**

⌘ Lobby
⌘ Gym

⌘ JANITORY SUITE

-0.14

+0.00

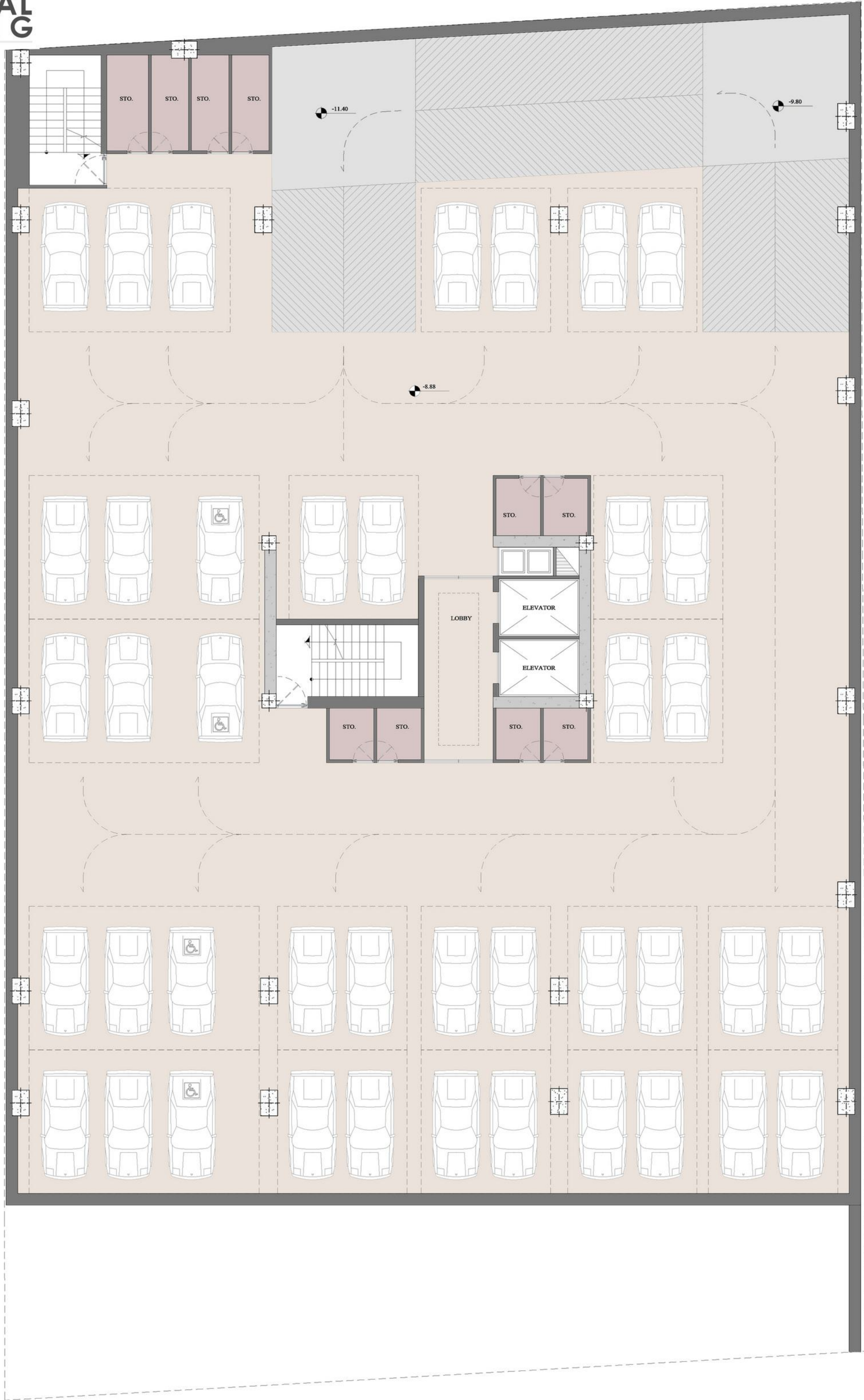


**-2 BASEMENT
PLAN**

⌘ Play Room
⌘ STORAGES

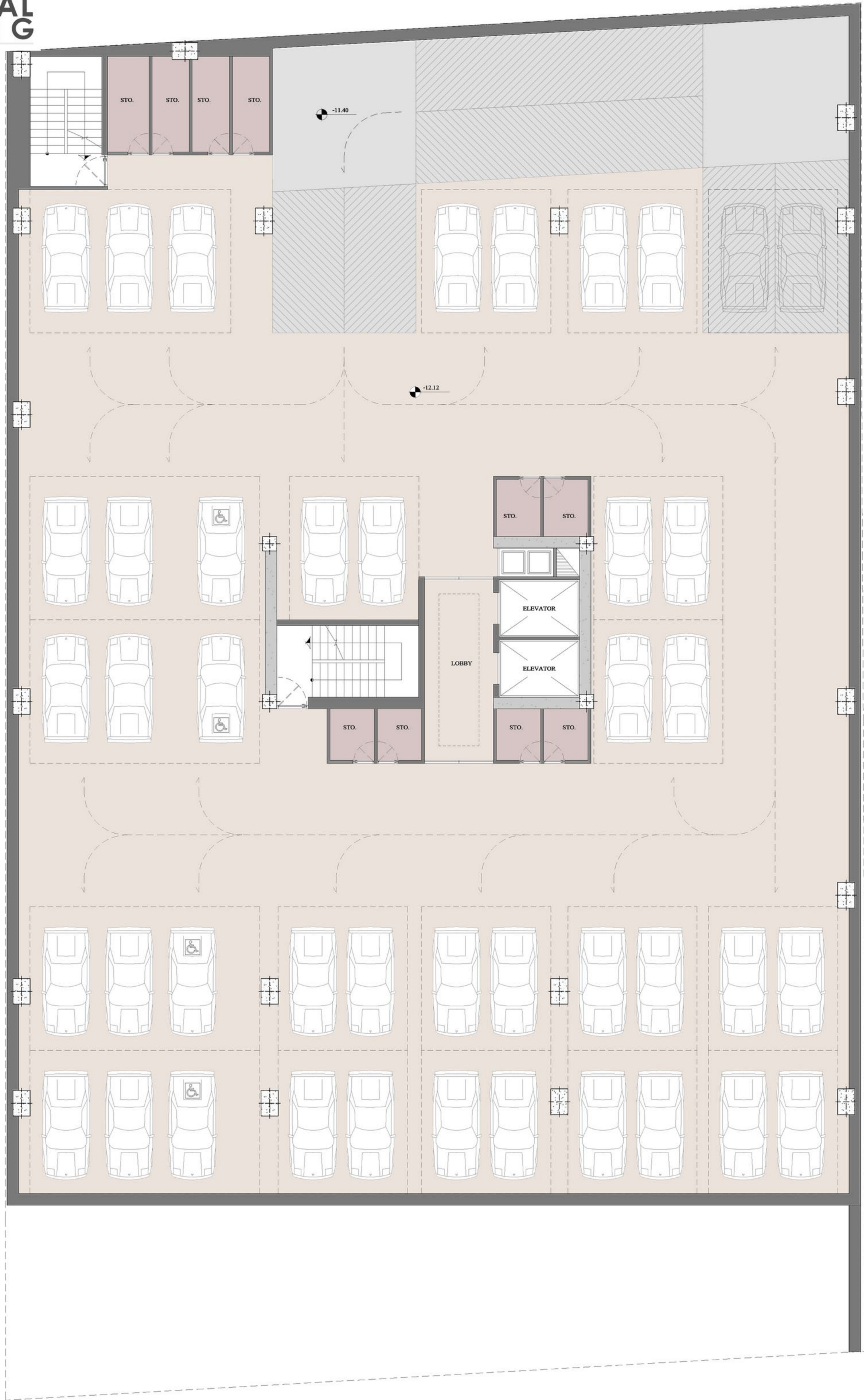
⌘ Gym
⌘ Pool

⌘ MECHANICAL ROOM



**-3 BASEMENT
PLAN**

- ⌘ PARKING SPACES: 41
- ⌘ STORAGES



**-4 BASEMENT
PLAN**

- ⌘ PARKING SPACES: 43
- ⌘ STORAGES



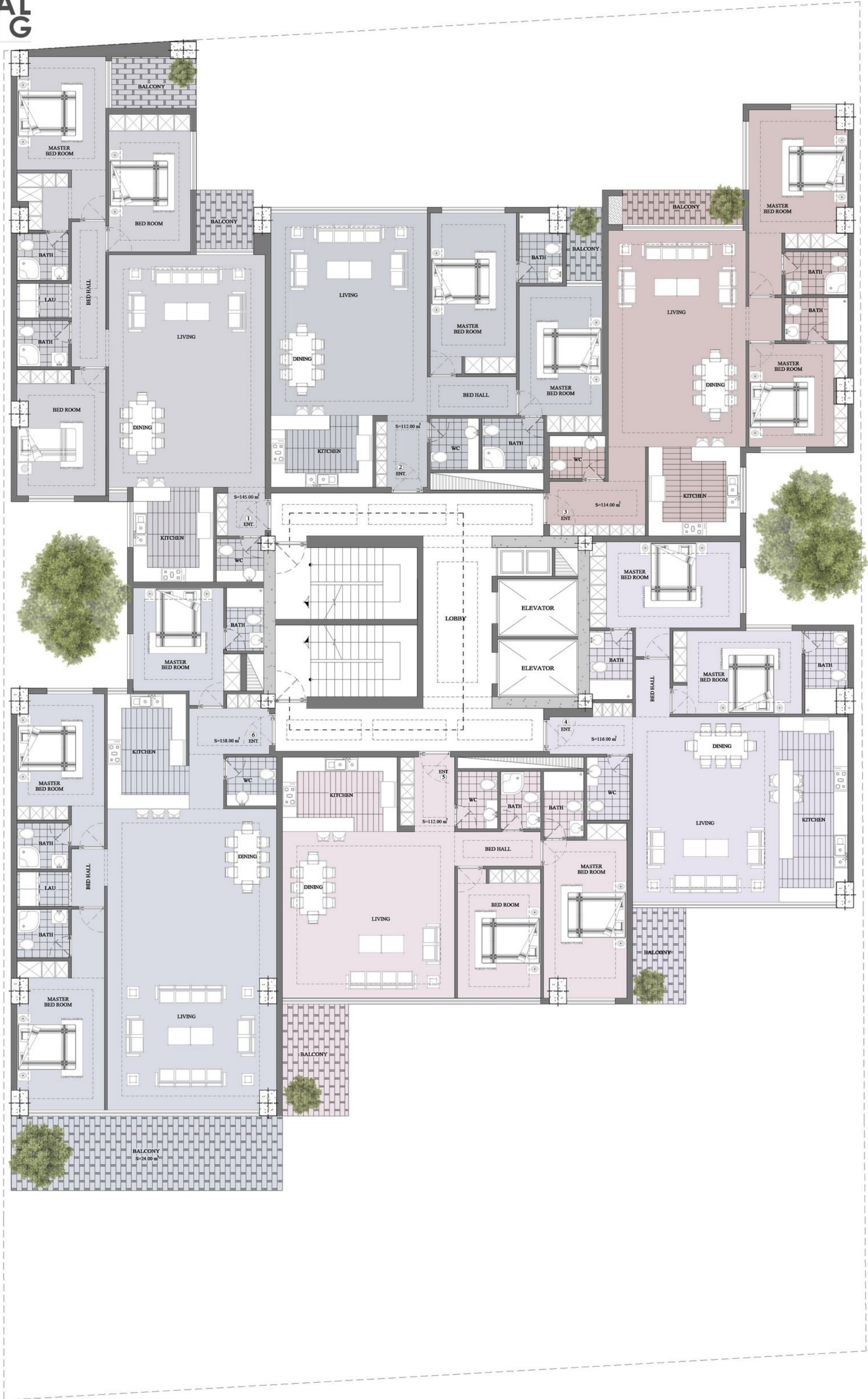
GROUND FLOOR PLAN

- ⌘ Lobby
- ⌘ MANAGER ROOM
- ⌘ MEETING ROOM
- ⌘ Cafe
- ⌘ CINEMA



**MEZZANINE
PLAN**

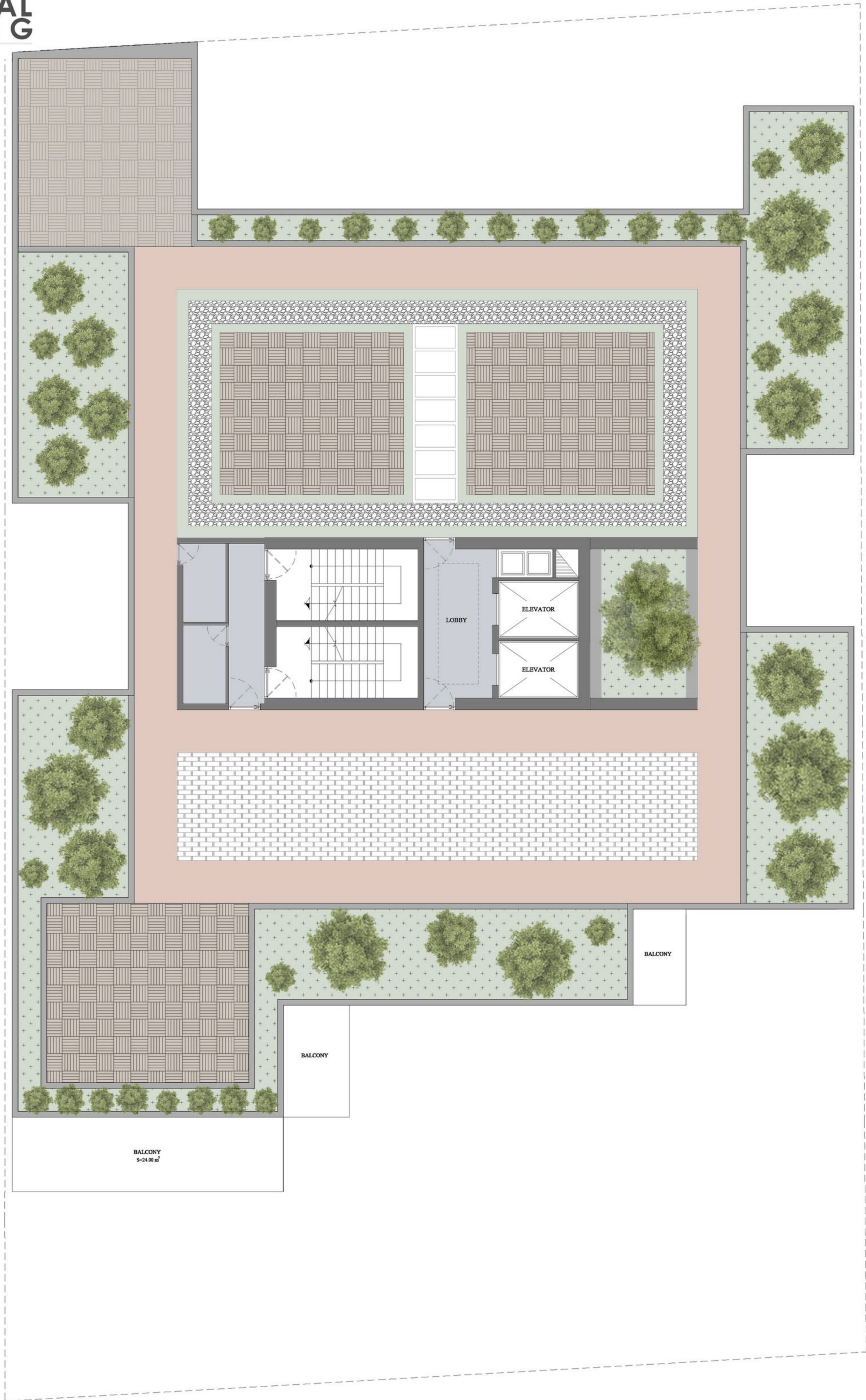
- ⌘ CHILDREN'S PLAY AREA
- ⌘ LIBRARY



Typical Floor Plan

- ⌘ UNIT 1: 145.00 M²
- ⌘ UNIT 2: 112.00 M²
- ⌘ UNIT 3: 114.00 M²

- ⌘ UNIT 4: 116.00 M²
- ⌘ UNIT 5: 112.00 M²
- ⌘ UNIT 6: 158.00 + 24.00 M²





APEX

RESIDENTIAL BUILDING

Urban Apartments are frequently praised for their clean lines of space, but what of their approach to color? Thoughtful incorporation of color is more than an aesthetic decision; it has the potential to shape emotional responses, influence mood, and create spatial illusion. Research in psychology shows that colors through the social, cultural, and psychological reactors, making them the design tools. Variations of blue, for instance, have been shown to slow melatonin production, keeping people more alert, while shades of green reduce strain on our nervous systems, helping us feel calmer and more relaxed. Color in architectural spaces can even alter our perception, creating an illusion of depth, movement, and texture that influence how we explore space. Cool whites and greens, making spaces appear taller and more expansive.

ALTERNATIVE 1

APEX RESIDENTIAL BUILDING



APEX
RESIDENTIAL
BUILDING



APEX
RESIDENTIAL
BUILDING



APEX
RESIDENTIAL
BUILDING



APEX RESIDENTIAL BUILDING



APEX
RESIDENTIAL
BUILDING



APEX
RESIDENTIAL
BUILDING



APEX
RESIDENTIAL
BUILDING



APEX RESIDENTIAL BUILDING



APEX
RESIDENTIAL
BUILDING



APEX
RESIDENTIAL
BUILDING



APEX

RESIDENTIAL BUILDING

Urban Apartments are frequently praised for their clean lines of space, but what of their approach to color? Thoughtful incorporation of color is more than an aesthetic decision; it has the potential to shape emotional responses, influence mood, and create spatial illusion. Research in psychology shows that colors through the social, cultural, and psychological reactors, making them the design tools. Variations of blue, for instance, have been shown to slow melatonin production, keeping people more alert, while shades of green reduce strain on our nervous systems, helping us feel calmer and more relaxed. Color in architectural spaces can even alter our perception, creating illusion of depth, movement, and texture that influence how we explore space. Cool whites and greens create a sense of openness, making spaces appear taller and more expansive.

ALTERNATIVE 2



APEX RESIDENTIAL BUILDING



APEX RESIDENTIAL BUILDING



APEX
RESIDENTIAL
BUILDING



APEX
RESIDENTIAL
BUILDING



APEX
RESIDENTIAL
BUILDING



APEX
RESIDENTIAL
BUILDING



APEX
RESIDENTIAL
BUILDING



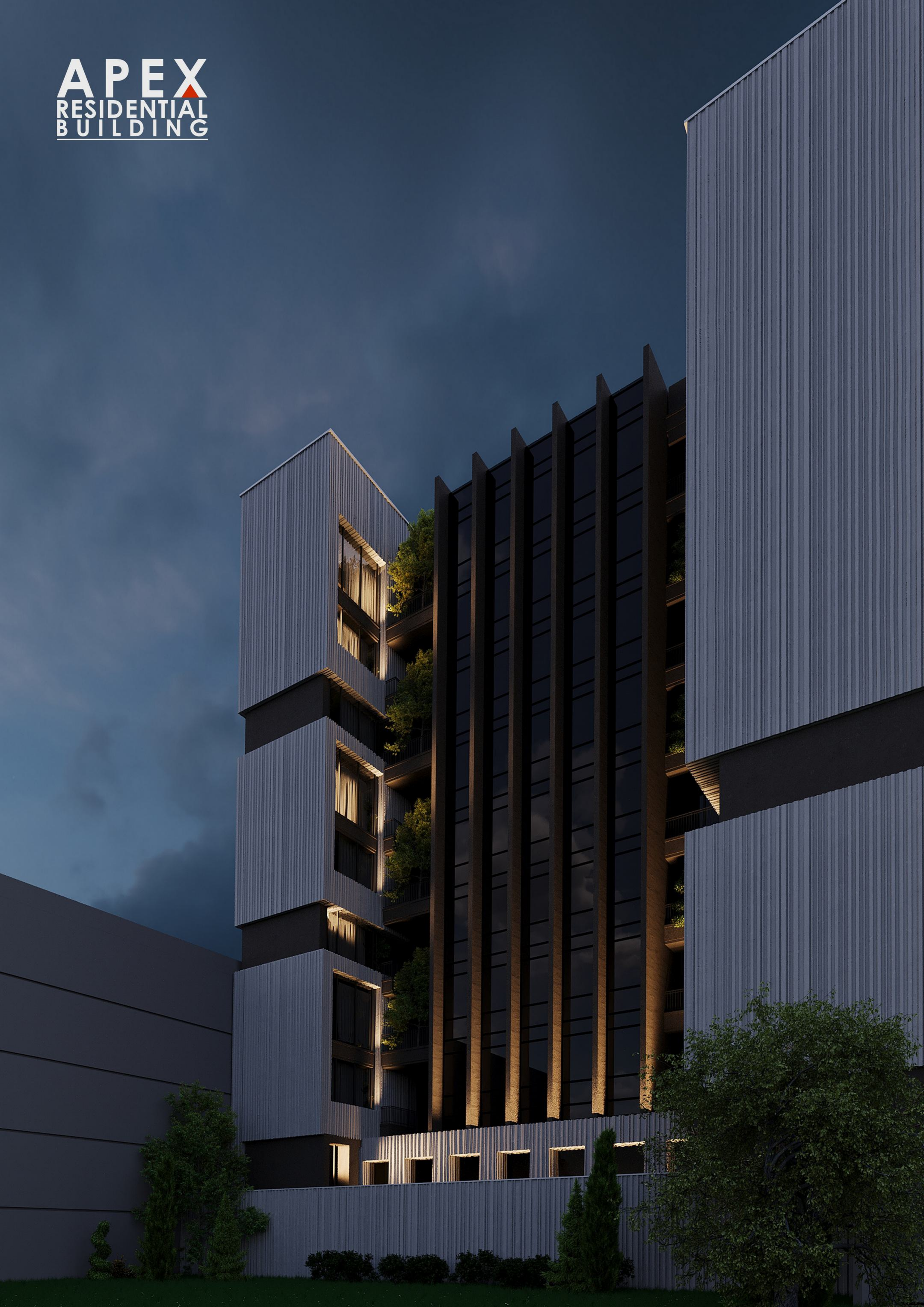
APEX RESIDENTIAL BUILDING



APEX
RESIDENTIAL
BUILDING



APEX
RESIDENTIAL
BUILDING





APEX RESIDENTIAL

APEX
RESIDENTIAL
BUILDING



APEX
RESIDENTIAL
BUILDING



APEX
RESIDENTIAL
BUILDING



APEX
RESIDENTIAL
BUILDING



APEX
RESIDENTIAL
BUILDING



APEX
RESIDENTIAL
BUILDING



APEX
RESIDENTIAL
BUILDING

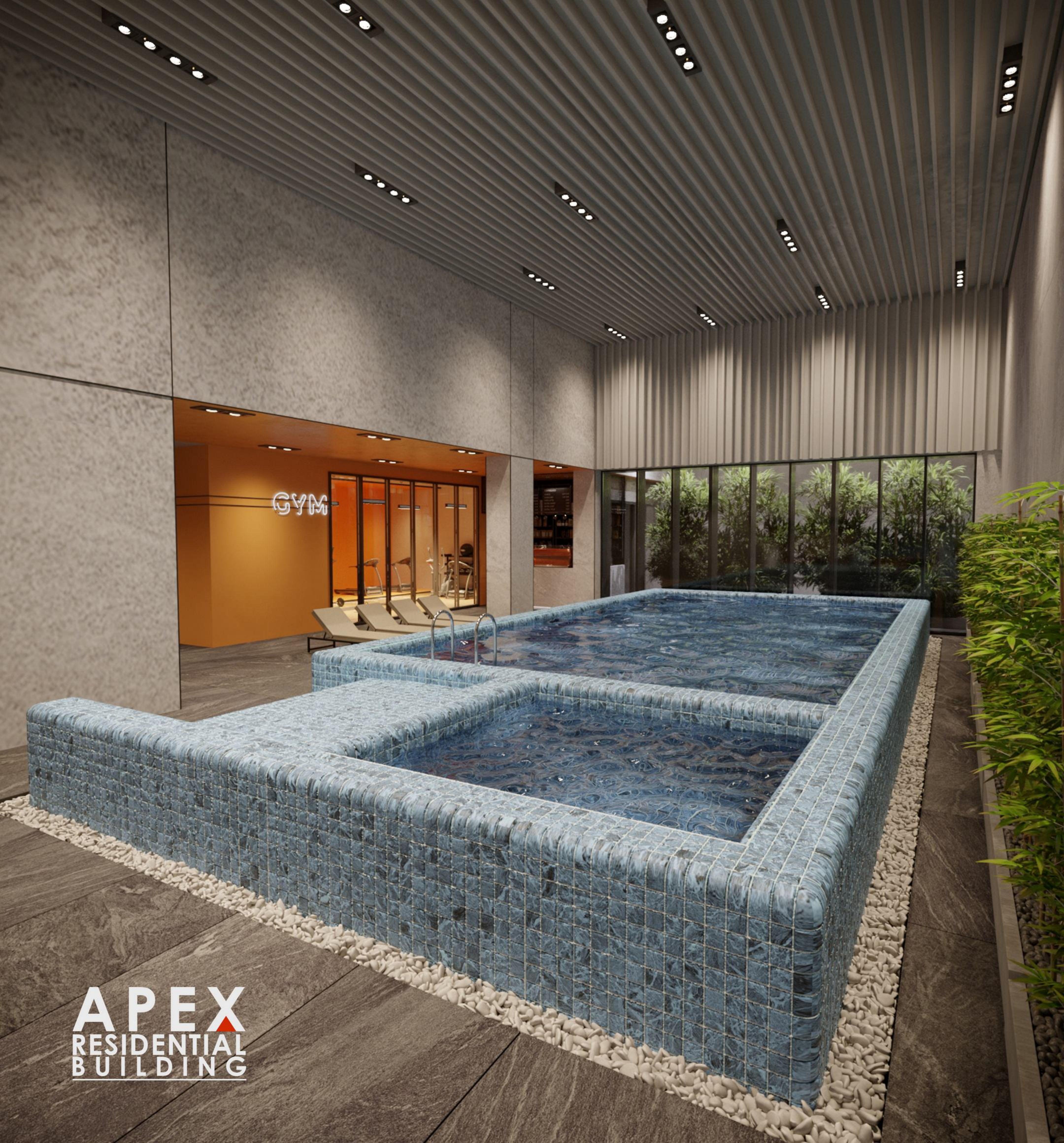


APEX
RESIDENTIAL
BUILDING



APEX
RESIDENTIAL
BUILDING





APEX
RESIDENTIAL
BUILDING

COFFEE

ESPRESSO		ESPRESSO		SOFT DRINKS	
AMERICANO	2.00 2.40	KIXAO	2.90 2.50	WASSER LAUF 0.3	1.50
CAFFUCCINO	2.00 2.00				
ESPRESSO MACCHIATO	2.00 2.20	CHAI LATTE	2.20	LEMONAID 0.3	2.80
LATTE		SAHNE SAHN		CHOCOLATA 0.3	3.50
FLAT WHITE	2.80	EXTRA SHOT	1.50	COFFEEOLA 0.2	2.40
MILCHKAFFEE	2.80	LACTA / SOJA	3.50	FRITZ KOLA 0.2	2.40
ESPRESSO	3.00	HOT CHOCOLATE	3.00	PETER PAN 0.3	4.50





APEX
RESIDENTIAL
BUILDING

COFFEE

ESPRESSO		ESPRESSO		SOFTDRINKS	
AVOCADO	2.80	ESPRESSO	2.00	WASSER LAUT 0.3	
CAPPUCCINO	2.80	CAFFÈ	1.80	APFELSCHNITZ 0.3	
ESPRESSO MACCHIATO	2.80	CHAI LATTE	2.20	LEMOYNA 0.3	
FLAT WHITE	3.20	EXTRA SHOT	1.20	COCA COLA 0.2	
MILCH ESPRESSO	3.20	EXTRA / SOJA	3.60	FRITZ COLA 0.2	
ESPRESSO	3.00	HOT CHOCOLATE	3.00	PETIT CAN 0.3	





GAIN YOUR MUSCLE

0
1
2
3
4
5

APEX
RESIDENTIAL
BUILDING



APEX
RESIDENTIAL
BUILDING



APEX
RESIDENTIAL
BUILDING

APEX
RESIDENTIAL
BUILDING





APEX
RESIDENTIAL
BUILDING





APEX
RESIDENTIAL
BUILDING



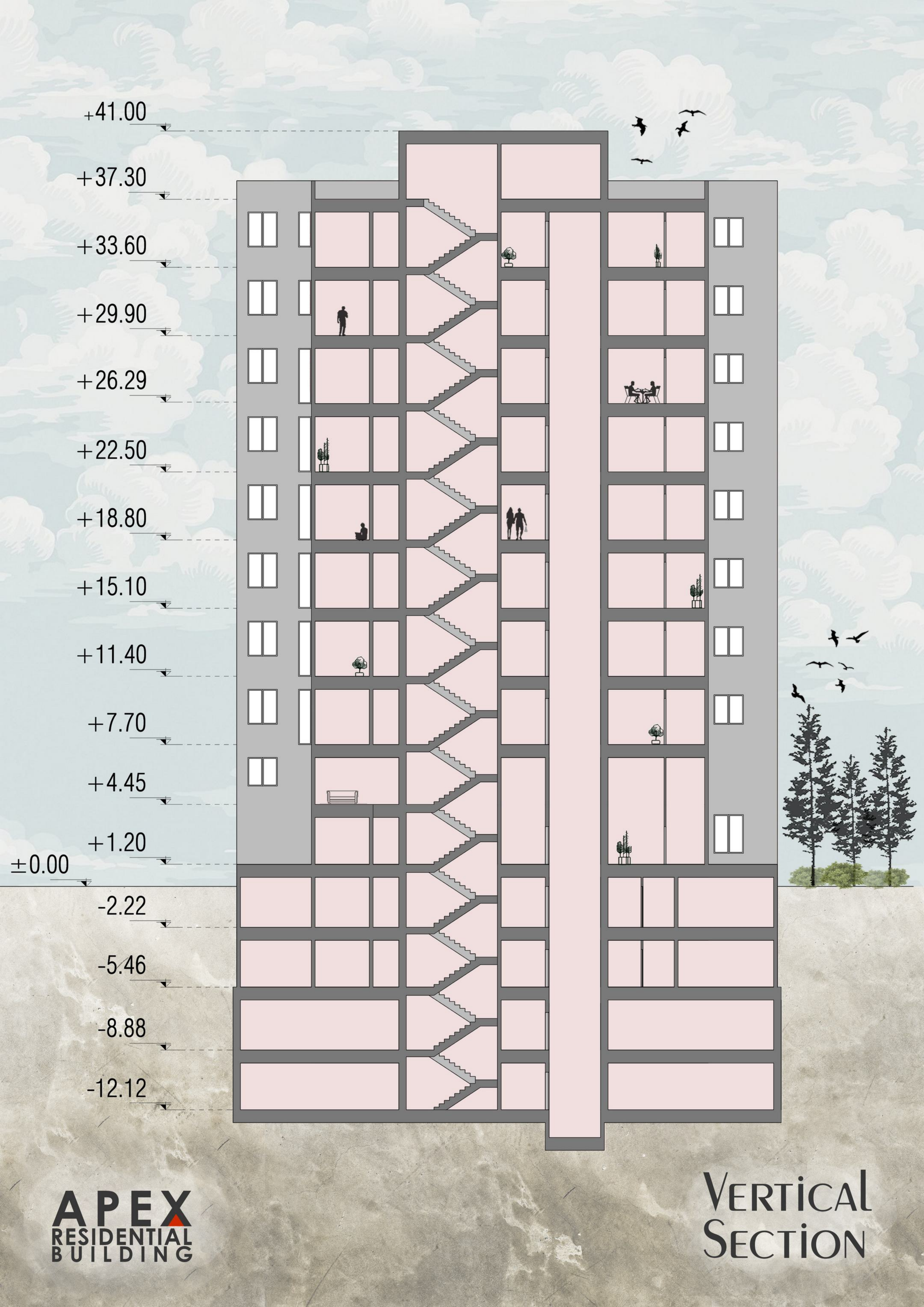
APEX
RESIDENTIAL
BUILDING



APEX
RESIDENTIAL
BUILDING



APEX
RESIDENTIAL
BUILDING



+41.00

+37.30

+33.60

+29.90

+26.29

+22.50

+18.80

+15.10

+11.40

+7.70

+4.45

+1.20

±0.00

-2.22

-5.46

-8.88

-12.12

APEX
RESIDENTIAL
BUILDING

VERTICAL
SECTION



APEX 1
RESIDENTIAL
COMPLEX
COMPETITION

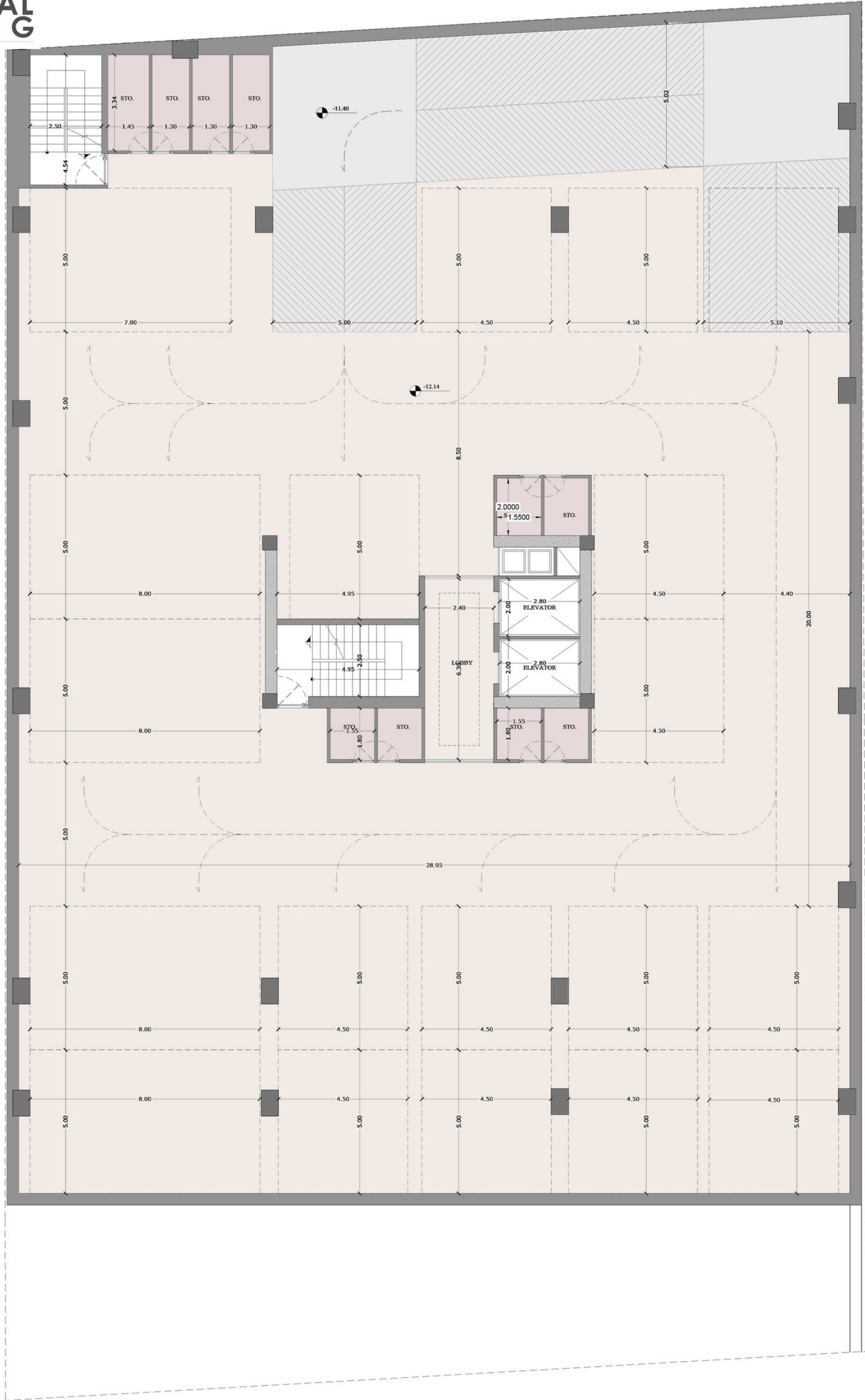
جدول مساحت کلی مسابقه ساختمان "اپکس ۱"

مساحت کل طبقه مساحت	انبار		پارکینگ مزاحم تعداد	پارکینگ سالم تعداد	راه پله + آسانسور و لابی مساحت	مسکونی		کاربری طبقات	
	مساحت	واحد				مساحت واحد	مساحت کل		واحد
1200	00.00	10	11	32	-	-	-	زیرزمین ۴-	
1200	00.00	10	11	30	-	-	-	زیرزمین ۳-	
1200	00.00	29	00	00	-	-	-	زیرزمین ۲-	
840	00.00	00	00	00	-	-	-	زیرزمین ۱-	
840	-	-	-	-	-	-	-	همکف	
300	-	-	-	-	-	-	-	نیم طبقه همکف	
840+24	-	-	-	-	83.00	واحد ۱: 145.00 واحد ۲: 112.00 واحد ۳: 114.00 واحد ۴: 116.00 واحد ۵: 112.00 واحد ۵: 158.00+24	757.00+24	6	اول
840+24	-	-	-	-	83.00	واحد ۱: 145.00 واحد ۲: 112.00 واحد ۳: 114.00 واحد ۴: 116.00 واحد ۵: 112.00 واحد ۵: 158.00+24	757.00+24	6	دوم
840+24	-	-	-	-	83.00	واحد ۱: 145.00 واحد ۲: 112.00 واحد ۳: 114.00 واحد ۴: 116.00 واحد ۵: 112.00 واحد ۵: 158.00+24	757.00+24	6	سوم
840+24	-	-	-	-	83.00	واحد ۱: 145.00 واحد ۲: 112.00 واحد ۳: 114.00 واحد ۴: 116.00 واحد ۵: 112.00 واحد ۵: 158.00+24	757.00+24	6	چهارم
840+24	-	-	-	-	83.00	واحد ۱: 145.00 واحد ۲: 112.00 واحد ۳: 114.00 واحد ۴: 116.00 واحد ۵: 112.00 واحد ۵: 158.00+24	757.00+24	6	پنجم
840+24	-	-	-	-	83.00	واحد ۱: 145.00 واحد ۲: 112.00 واحد ۳: 114.00 واحد ۴: 116.00 واحد ۵: 112.00 واحد ۵: 158.00+24	757.00+24	6	ششم
840+24	-	-	-	-	83.00	واحد ۱: 145.00 واحد ۲: 112.00 واحد ۳: 114.00 واحد ۴: 116.00 واحد ۵: 112.00 واحد ۵: 158.00+24	757.00+24	6	هفتم
840+24	-	-	-	-	83.00	واحد ۱: 145.00 واحد ۲: 112.00 واحد ۳: 114.00 واحد ۴: 116.00 واحد ۵: 112.00 واحد ۵: 158.00+24	757.00+24	6	هشتم
مساحت کل مجموعه	مجموع مساحت انبار	مجموع تعداد پارکینگ مزاحم	مجموع تعداد پارکینگ سالم	-	مجموع مساحت مسکونی	-	6056.00+192	48	جمع

دیوارهای مشترک بین فضای مسکونی و مشاعات (راه پله، آسانسور و لابی) جزء مساحت مسکونی محاسبه می شود

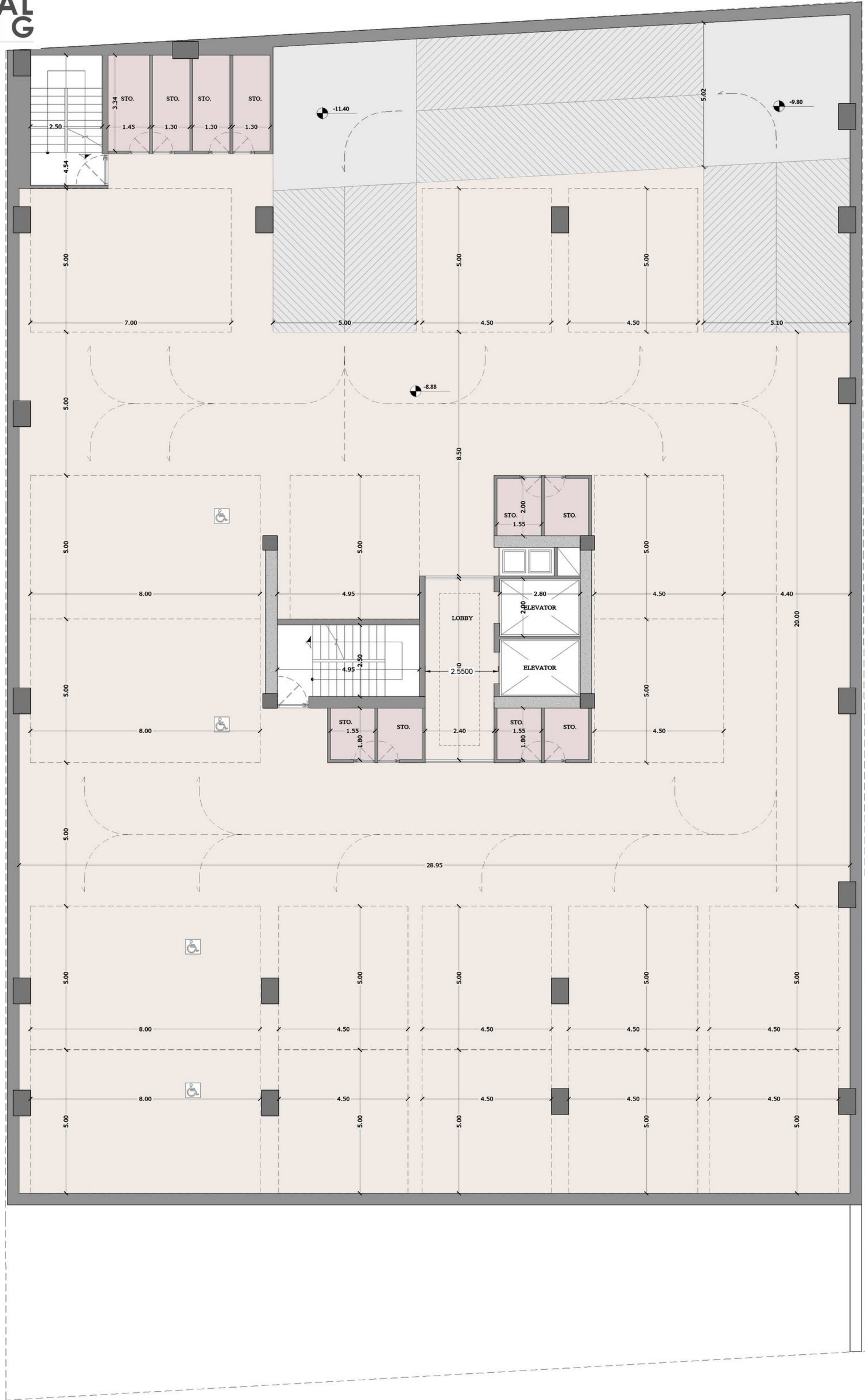
نیازی به پر کردن خانه های با علامت (-) نیست

لطفاً پلی لاین مساحت کل طبقه و واحدهای مسکونی در فایل اتوکد ترسیم شود



**-4BASEMENT
PLAN**

- ⌘ PARKING SPACES: 43
- ⌘ STORAGES



**-3 BASEMENT
PLAN**

- ⌘ PARKING SPACES: 41
- ⌘ STORAGES

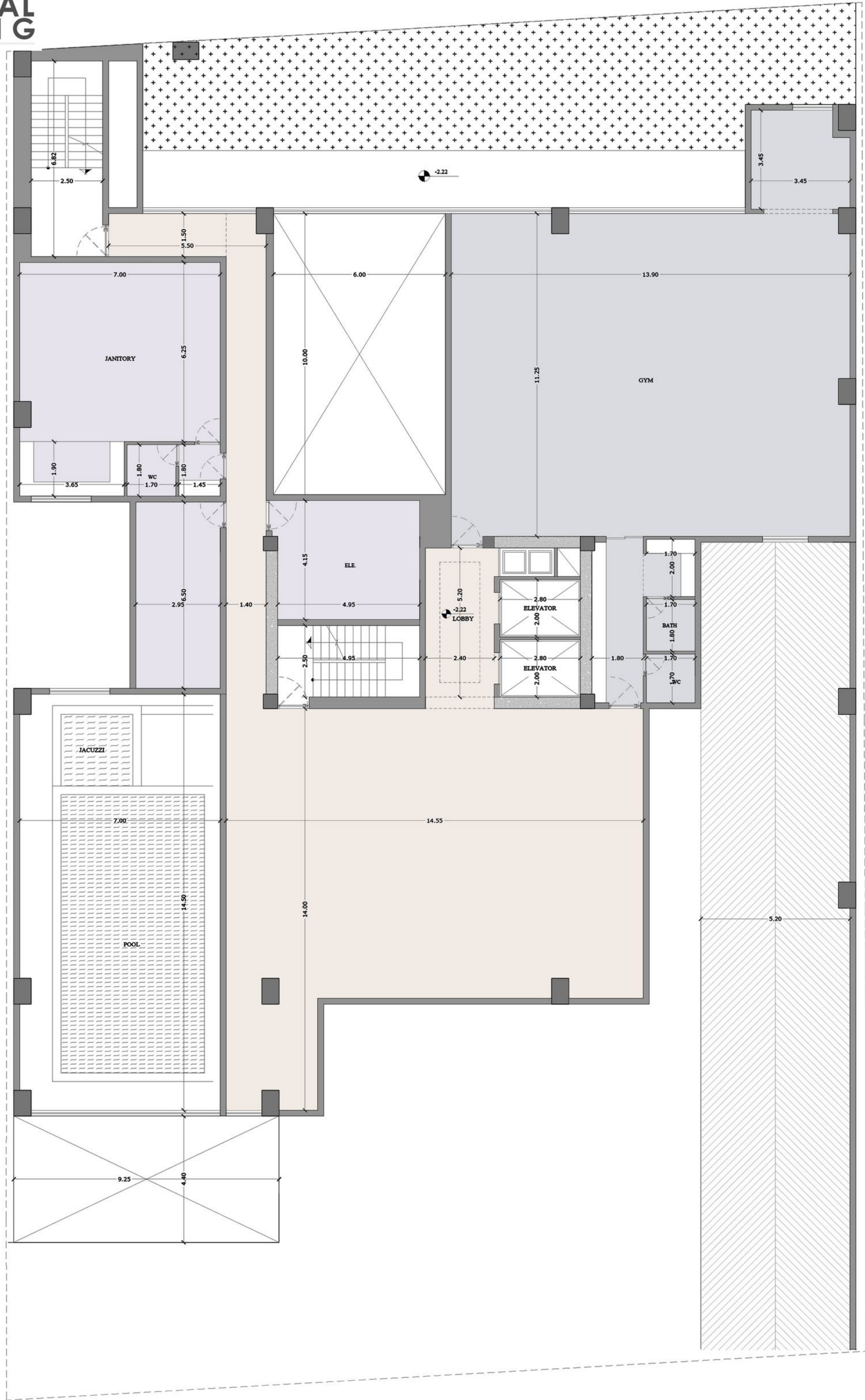


-2 BASEMENT PLAN

⌘ Play Room
⌘ STORAGES

⌘ Gym
⌘ Pool

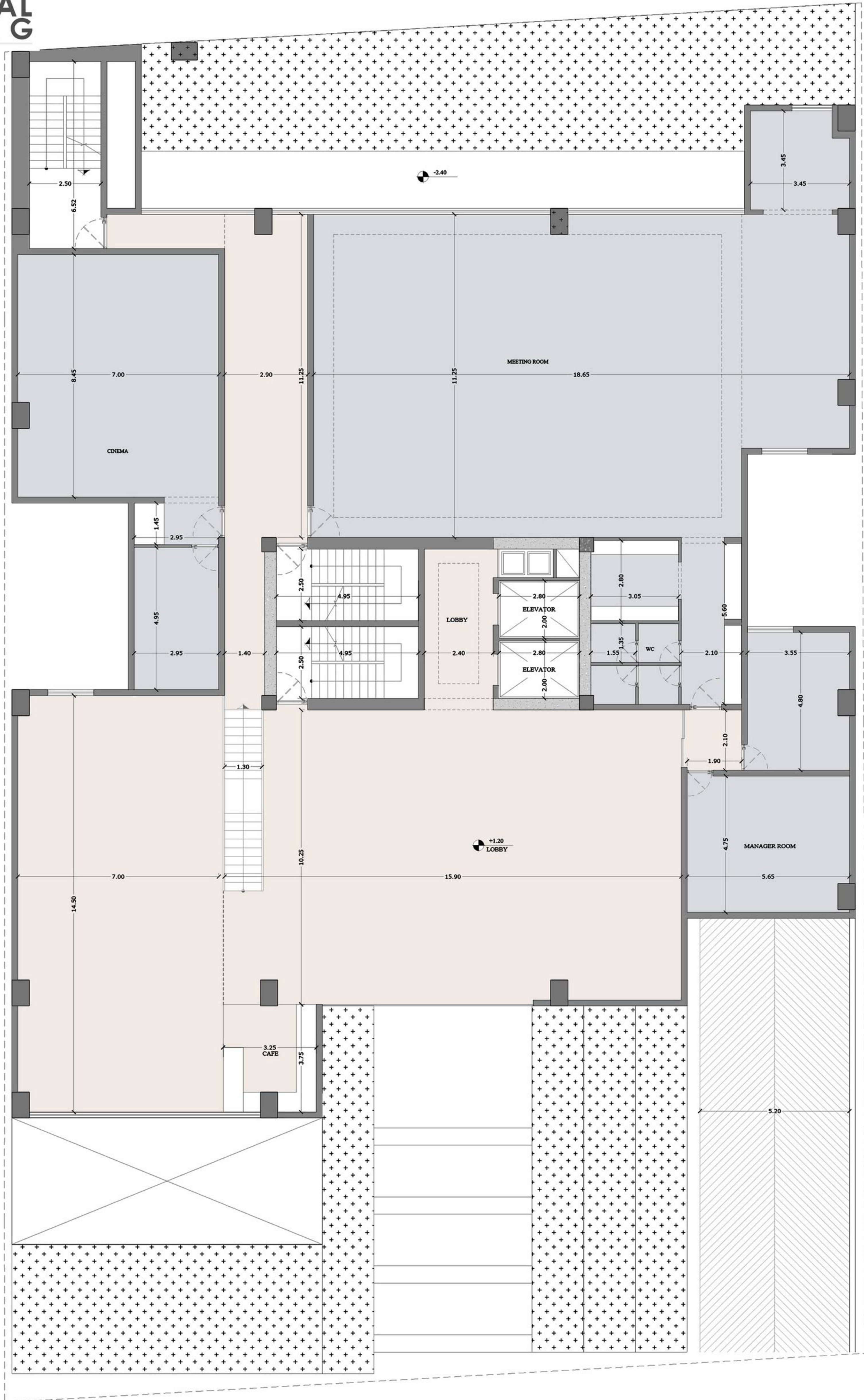
⌘ MECHANICAL ROOM



**-1 BASEMENT
PLAN**

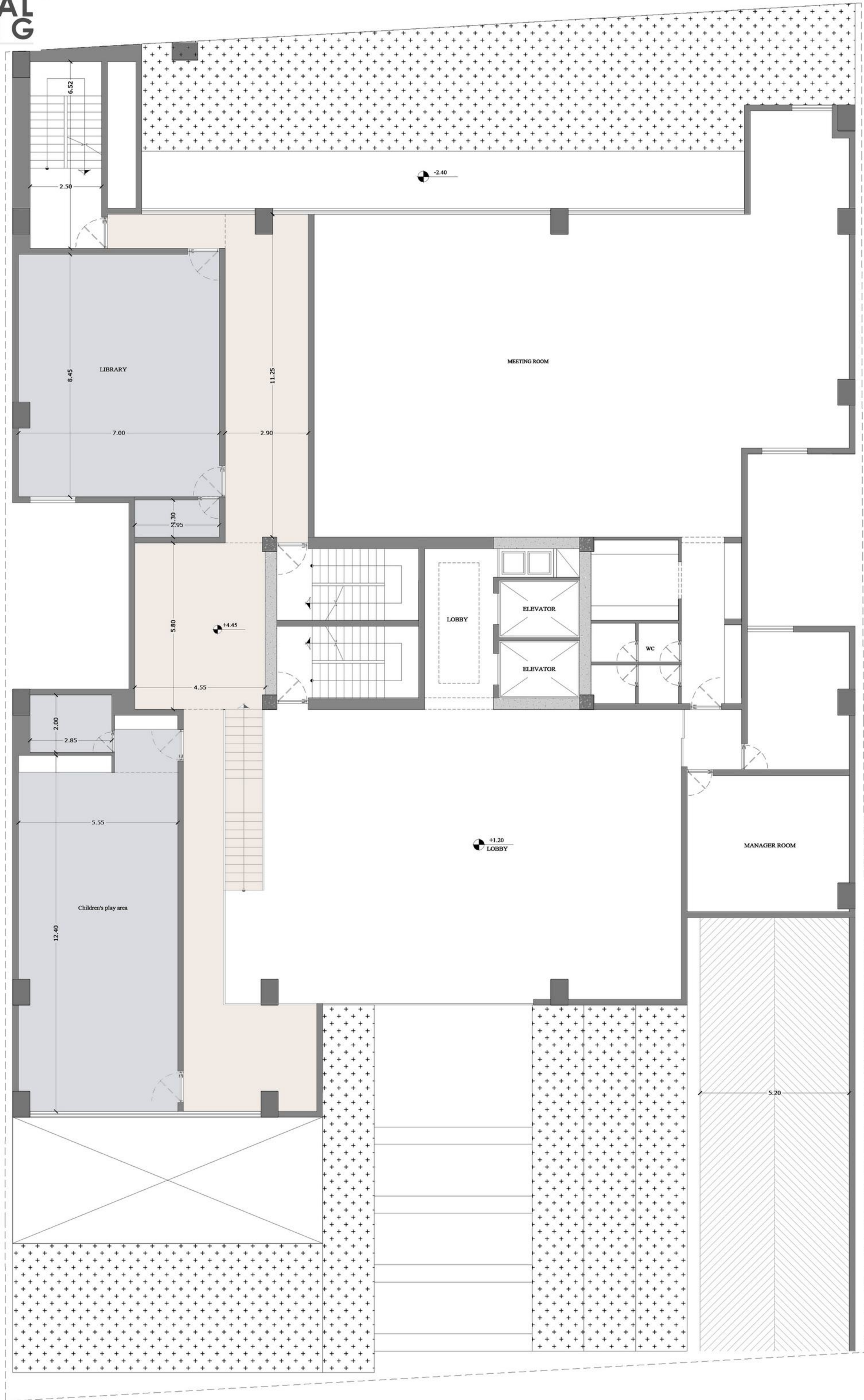
⌘ Lobby
⌘ Gym

⌘ JANITORY SUITE



GROUND FLOOR PLAN

- ⌘ Lobby
- ⌘ MANAGER ROOM
- ⌘ MEETING ROOM
- ⌘ Cafe
- ⌘ CINEMA



**MEZZANINE
PLAN**

- ⌘ CHILDREN'S PLAY AREA
- ⌘ LIBRARY



Typical Floor Plan

⌘ UNIT 1: 145.00 M²
 ⌘ UNIT 2: 112.00 M²
 ⌘ UNIT 3: 114.00 M²

⌘ UNIT 4: 116.00 M²
 ⌘ UNIT 5: 112.00 M²
 ⌘ UNIT 6: 158.00 + 24.00 M²