



AFTAB

AFTAB HOUSE COMPETITION 2025

COMPETITION ORGANIZER
TARH 2 TARH

CLIENT
MAHDI PIOS

MENTOR
BABAK YAZDAN

Competition Organizer
TARH 2 TARH

LOCATION
BUSHEHR

DESIGN TOPIC

Residential Building "AfTab" in Bushehr - Facade,
Living Room, and Rooftop Garden Design



FLUIDITY IN AFTAB HOUSE

This residential project in the historic port city of Bushehr is conceived as a serene sanctuary that mediates between the powerful natural identity of the Persian Gulf and the rich architectural heritage of the region. The design is driven by a profound respect for its context, translating the familiar elements of the coastal landscape into a contemporary architectural language.







INTERIOR

Semi-circular arches reinterpret Bushehr's vernacular forms in modern language.



AGAIN INTERIOR...

The design merges contemporary expression with Bushehr's cultural roots.

CURVE AS . . .

CURVE LINE AS RHYTHM OF NATURE

This project was developed with the aim of reinterpreting the vernacular architecture of Bushehr through a contemporary language. The central design idea is the use of soft, curved lines—forms that evoke the rhythm of the seashore, the gentle flow of waves, and the breeze of the southern coast. These curves create a sense of fluidity and dynamism while recalling familiar spatial experiences deeply rooted in the collective memory of the city's residents.

FACADE RENDER

COLOR ROLE

White façade reflects sunlight, reduces heat, and continues tradition.





CLOSE RENDER

Arches and niches are reimagined as minimal, functional, modern details.



NIGHT RENDER

SHINING CURVES

Night lighting transforms curves into flowing waves of light





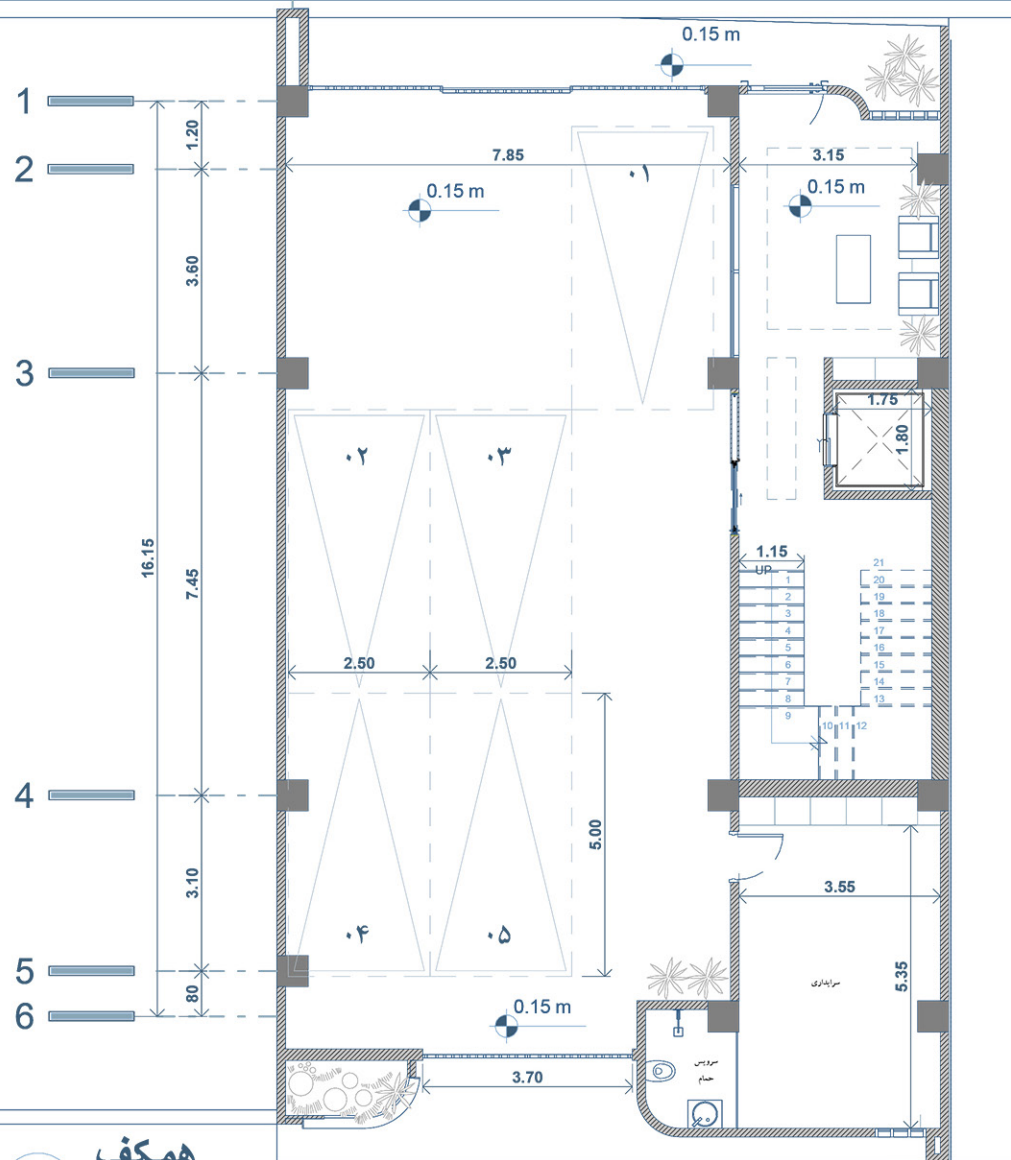
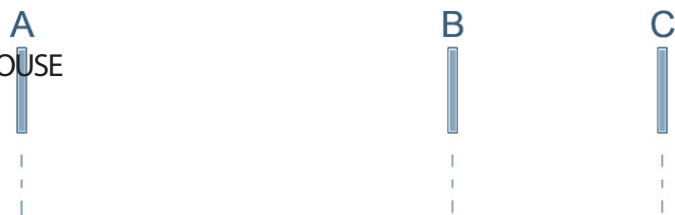




ROOF GARDEN

NATURE FORMS...

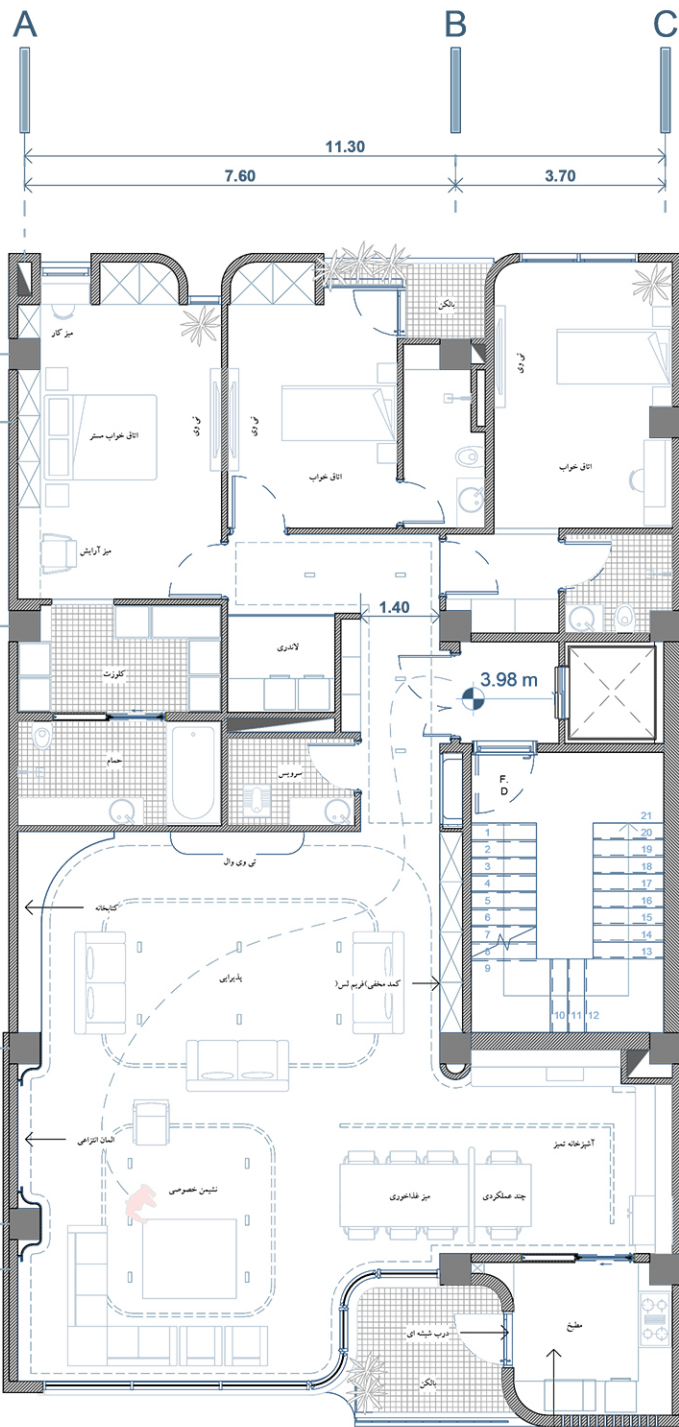
Curved roof garden reflects waves and organic coastal rhythms



PLANS...

SOFT BOUNDARIES

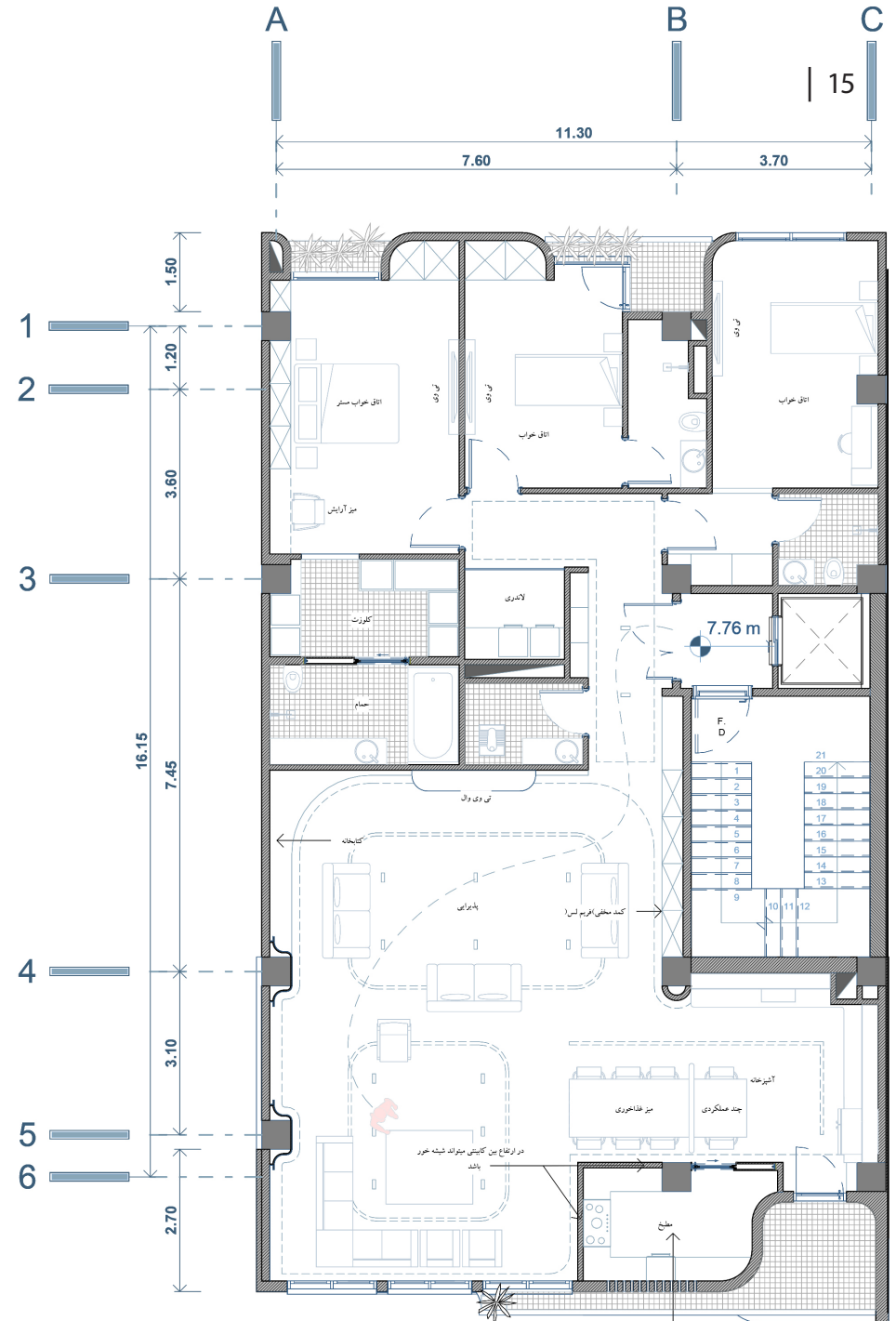
Curved plan layout creates fluid connections between living spaces.



طبقه اول

1 : 100

فضای مطبخ فضای گرم محسوب می شود و با اینکه در پلان اولیه این فضا با حجم زیادی از شیشه طراحی شده بود، در طراحی نهی علاوه بر اینکه با درب شیشه ای و فیلترمدین نور طبیعی این فضا تامین شده است، از طرفی دیگر از اوجیت شدن فضا جلوگیری شده است.

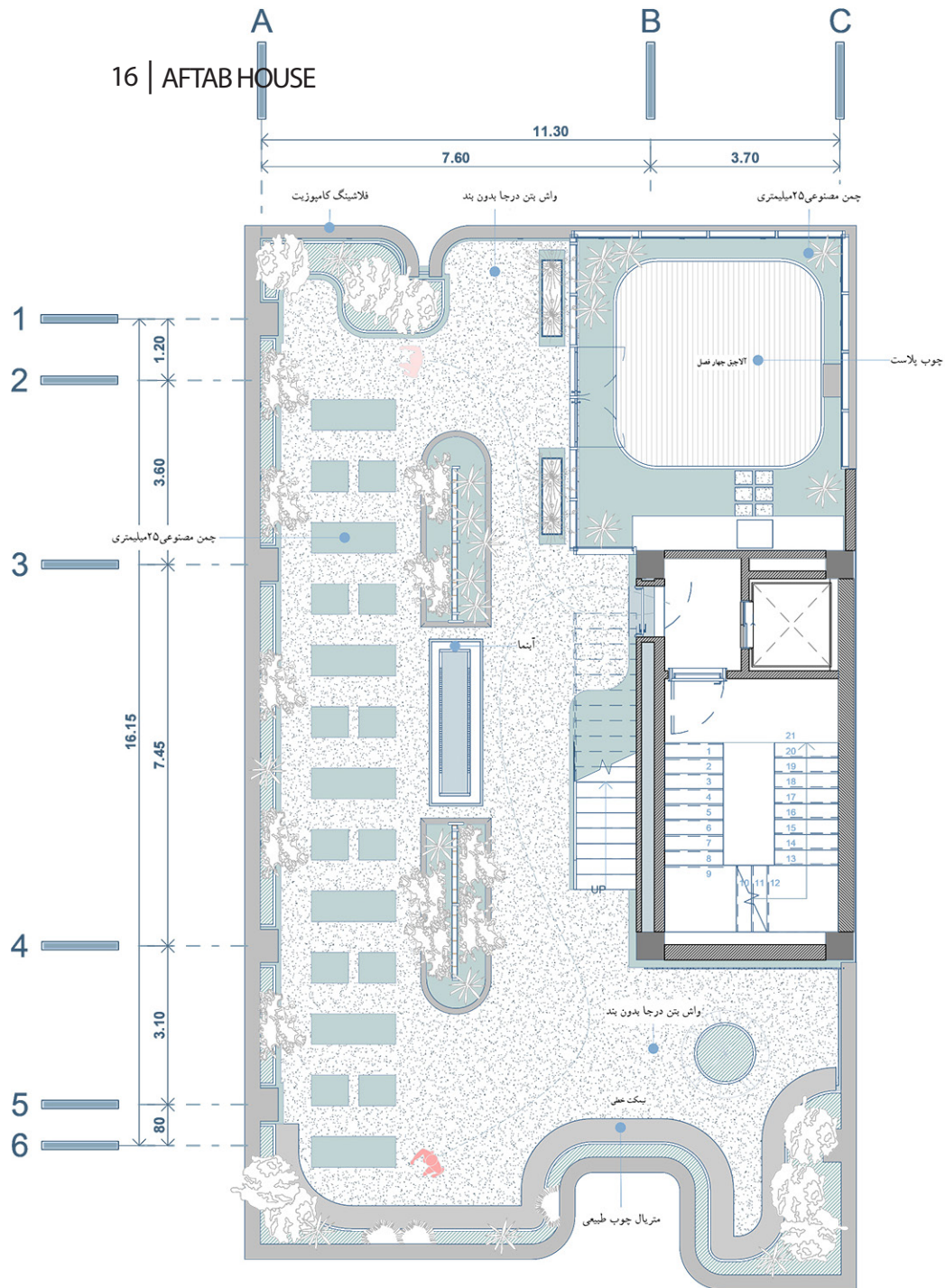


طبقه دوم

1 : 100

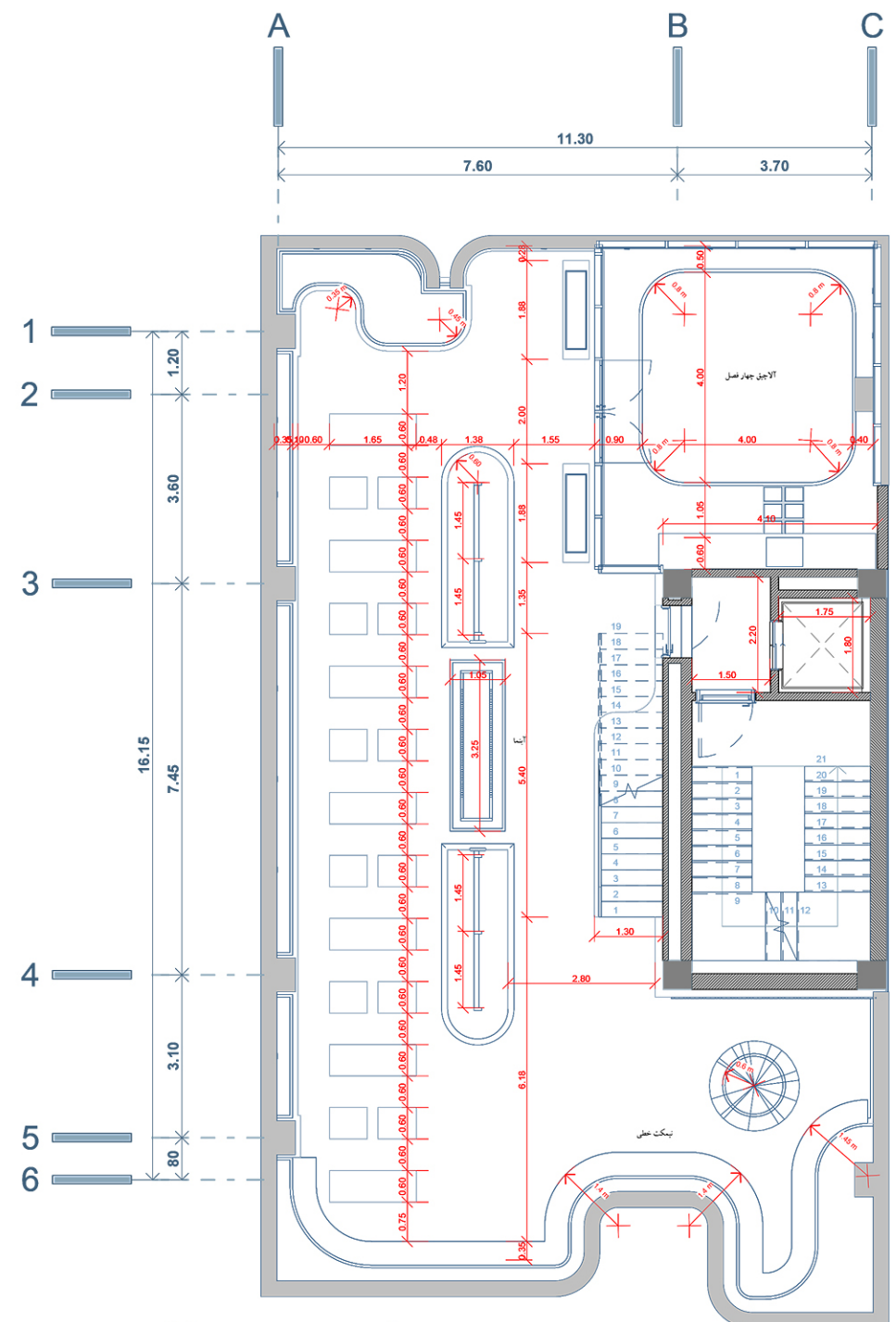
فضای مطبخ فضای گرم محسوب می شود و با اینکه در پلان اولیه این فضا با حجم زیادی از شیشه طراحی شده بود، در طراحی نهی علاوه بر اینکه با درب شیشه ای و فیلترمدین نور طبیعی این فضا تامین شده است، از طرفی دیگر از اوجیت شدن فضا جلوگیری شده است.

16 | AFTAB HOUSE



بام - روف گاردن

1 : 100



روف گاردن - اندازه گذاری

1 : 100

COZY GARDEN

Curved roof garden reflects waves and organic coastal rhythms.



NIGHT TIME

LIGHTING ...

Linear illumination echoes Bushehr's coastal softness at night.



THANK YOU ...

WEBSITE : www.tarh2tarh.com