



GOLESTAN RESIDENTIAL PROJECT

LIST

Design process

In this section, the design process and how to reach the design concept are fully explained.

plan

In this section, plans and documents related to the project are placed.

image

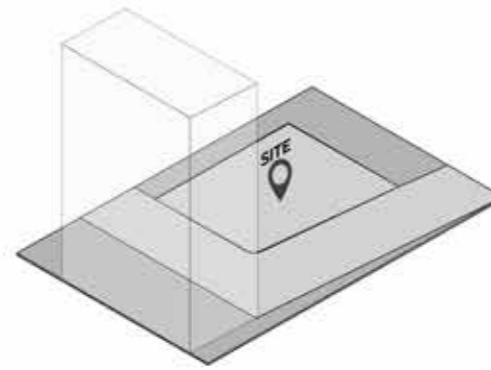
South view



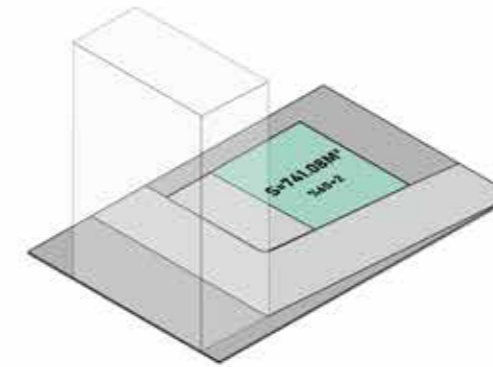
East view

DESIGN PROCESS

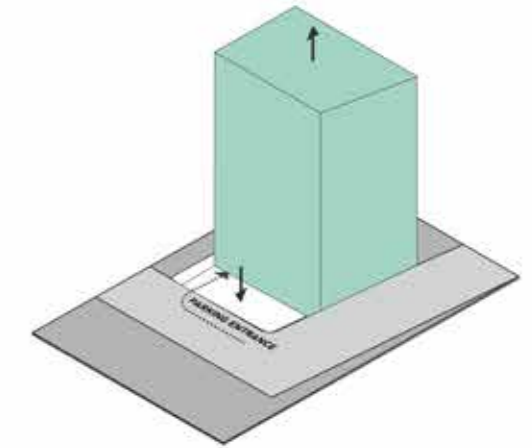
Finally, the design has been done in such a way that we move with the strategic use of the spaces in such a way that it gives the sense of movement and invitation to the residents.



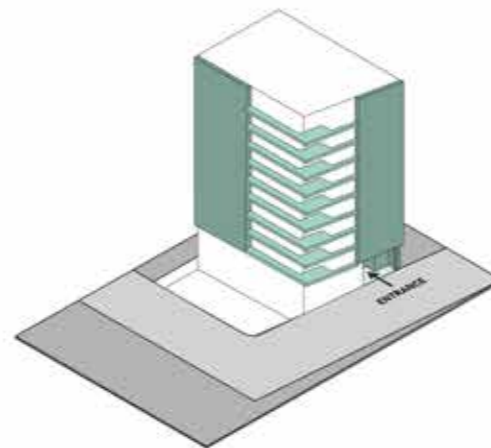
The design site is located in the city of Tehran, North Golestan Street, in the vicinity of 15-meter street and 15-meter dead-end alley.



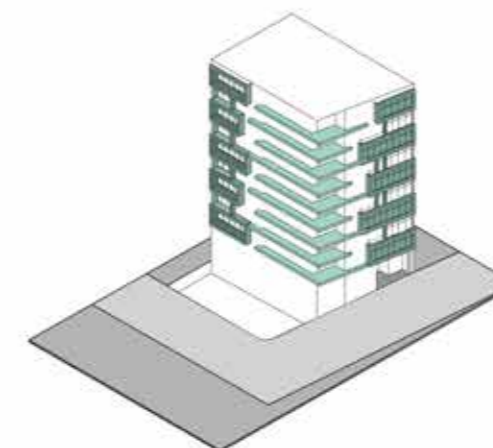
In compliance with the rules and regulations, 741 m² of the site have been allocated to residential units and other spaces. The design of the residential apartment is very important according to the needs of the residents and the conditions of the area.



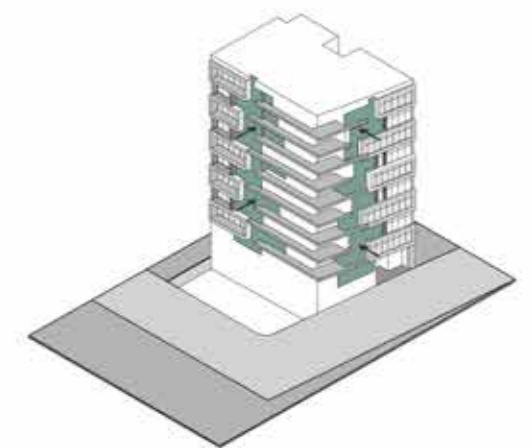
The creation of a sunken courtyard in the southern part of the site 1st floor provides the possibility of lighting the spaces of the



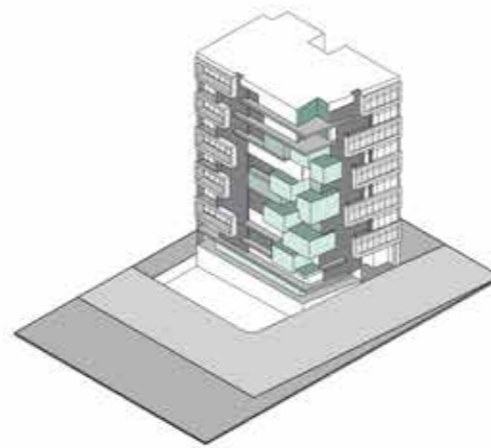
The design has been made to create visual uses of space. The all over terraces that continue to the green frames can provide a good view for the residents.



Contrary to the usual design of the residential unit which contains the same Plan and the same terrace, this project contains a collection of the types of Plan and terrace, which are used for the various groups.



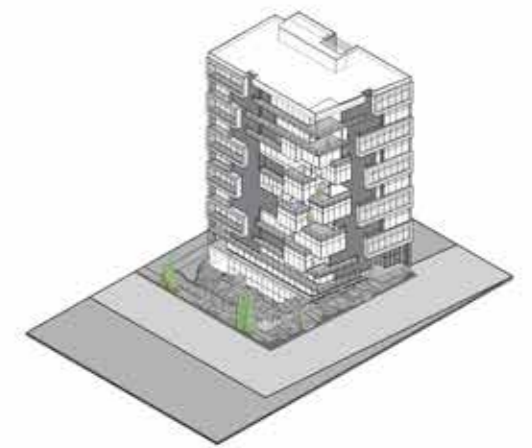
creating a semi-transparent surface to control the light passing and Rules.



The cubic-shaped terrace, designed and delivered by design and by definition. These terraces are protruding or empty from the original volume.



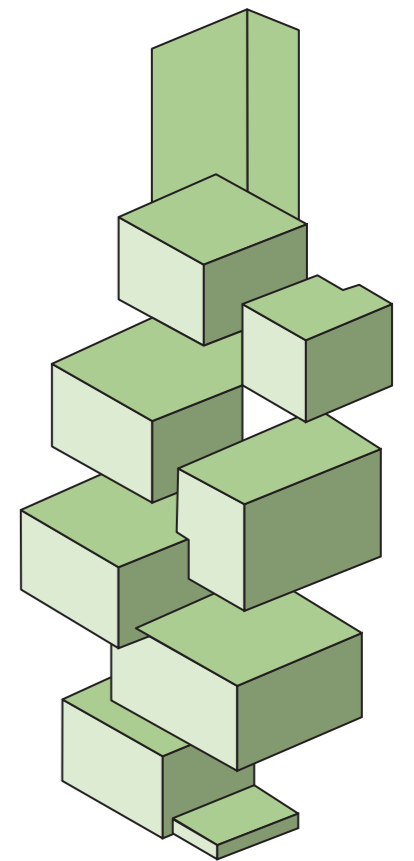
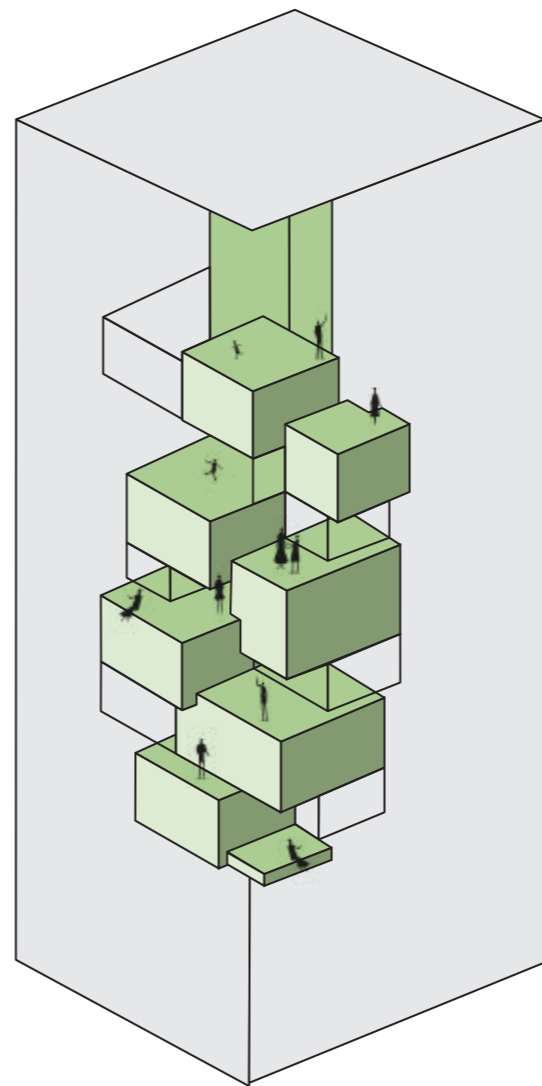
The green line of our street is also turned into a floating cube to provide a nice greenness for each unit.



Finally, the design has been done in such a way that we move with the strategic use of the spaces in such a way that it gives the sense of movement and invitation to the residents

FLEXIBLE CUBE

The cubic - shaped terrace, designed and delivered by design and by definition, These terraces are protruding or empty from the original volume.



GREEN VIEW

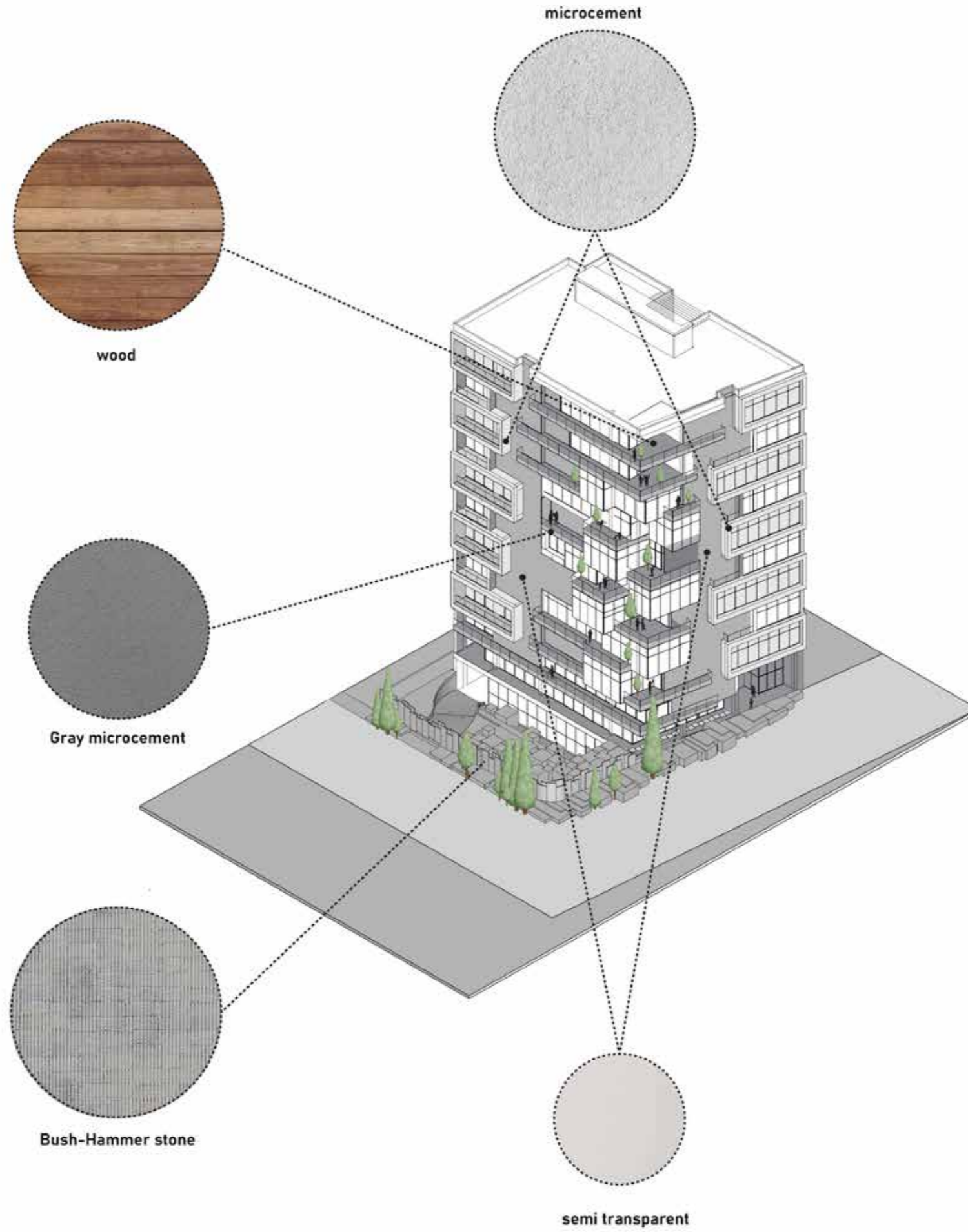
The green view of the street is extended to the facade and lobby of the building.
As well as common housing, each unit has its own yard that can be used normally.



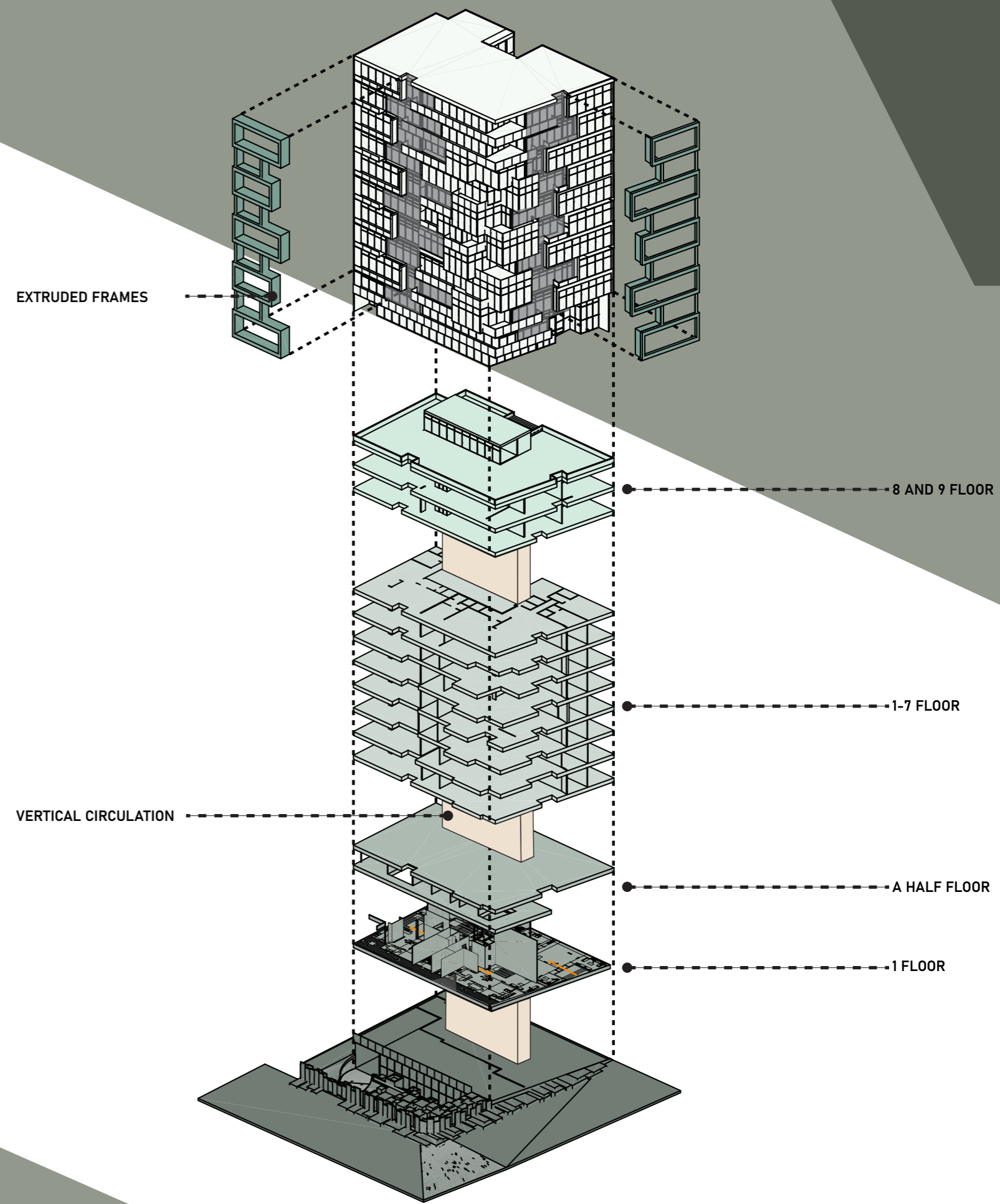


FLEXIBLE CUBE

MATERIALS USED IN THE DESIGN



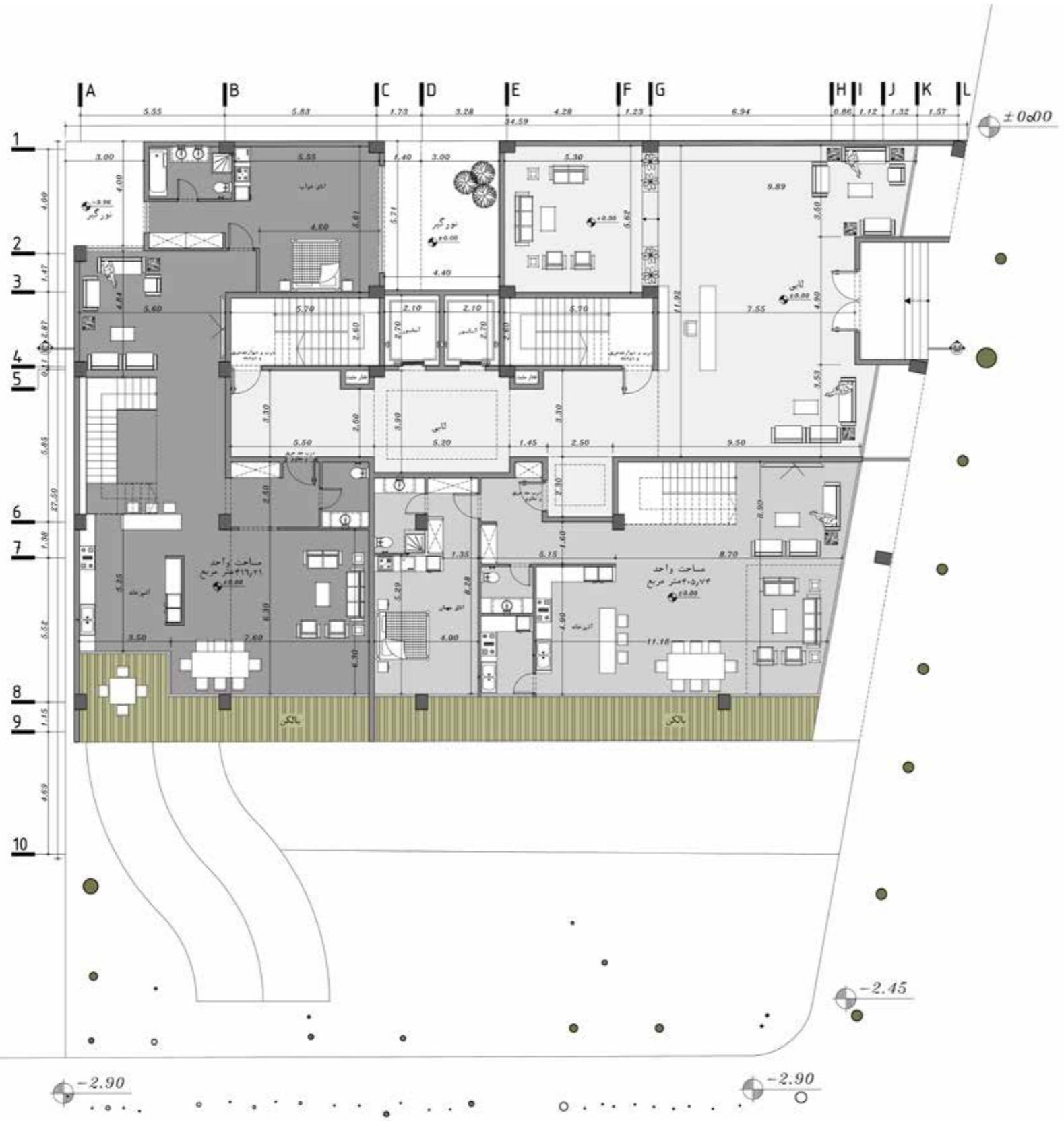
EXPLODED DIAGRAM



ground floor plan



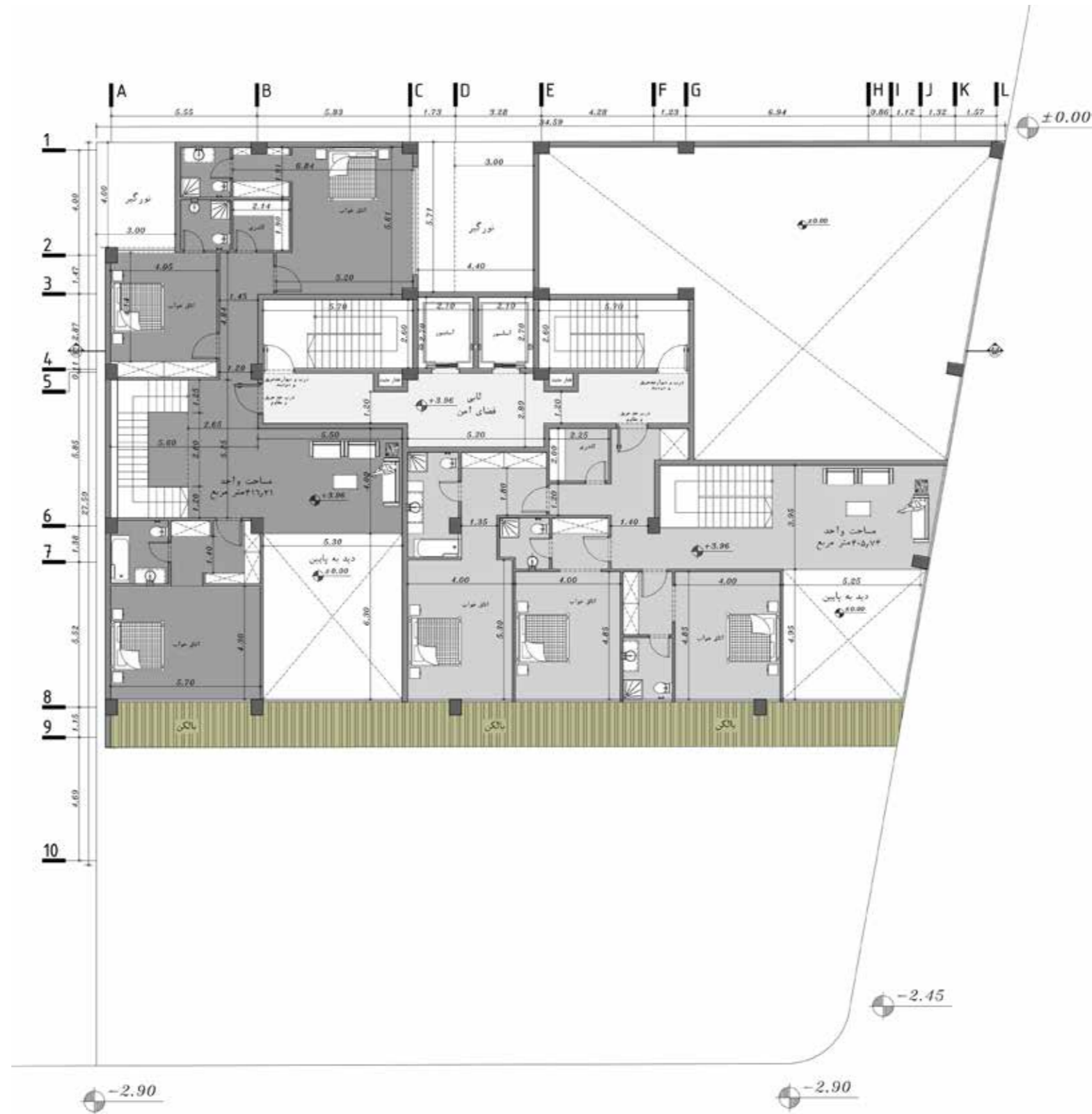
scale: 1/100



mezzanine floor plan



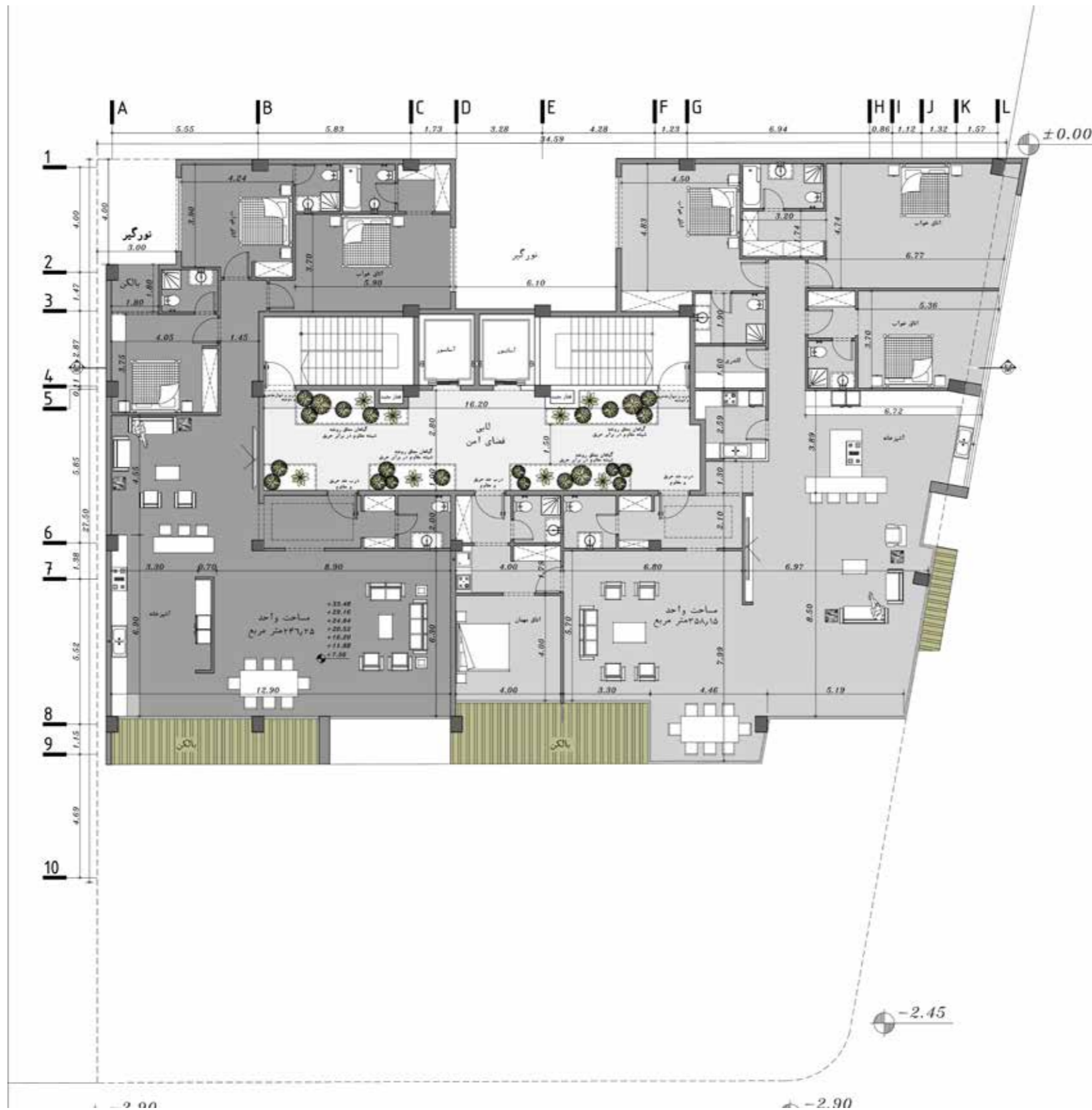
scale: 1/100



7-1 floor plan A



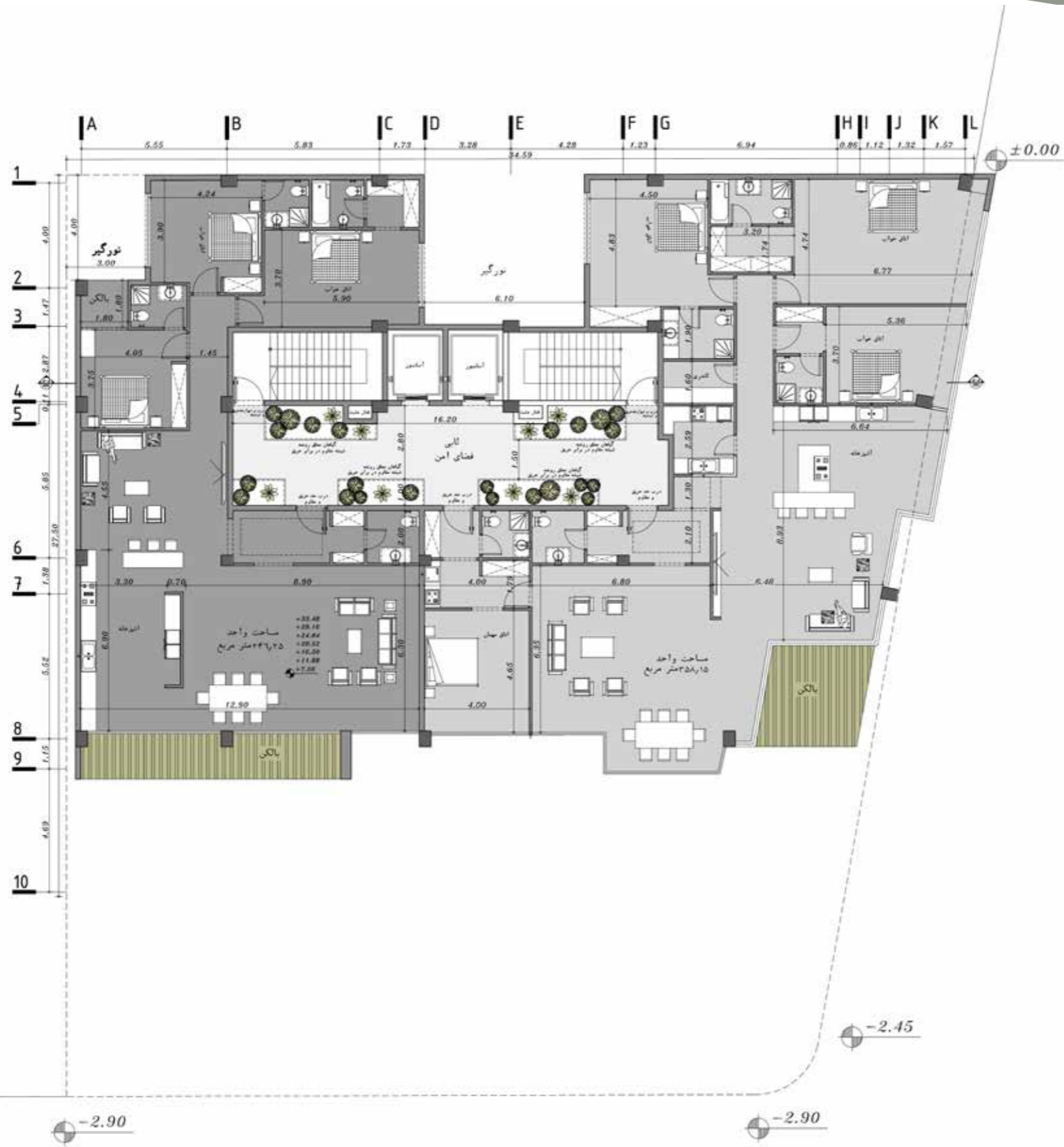
1/100 :scale



7-1 floor plan C



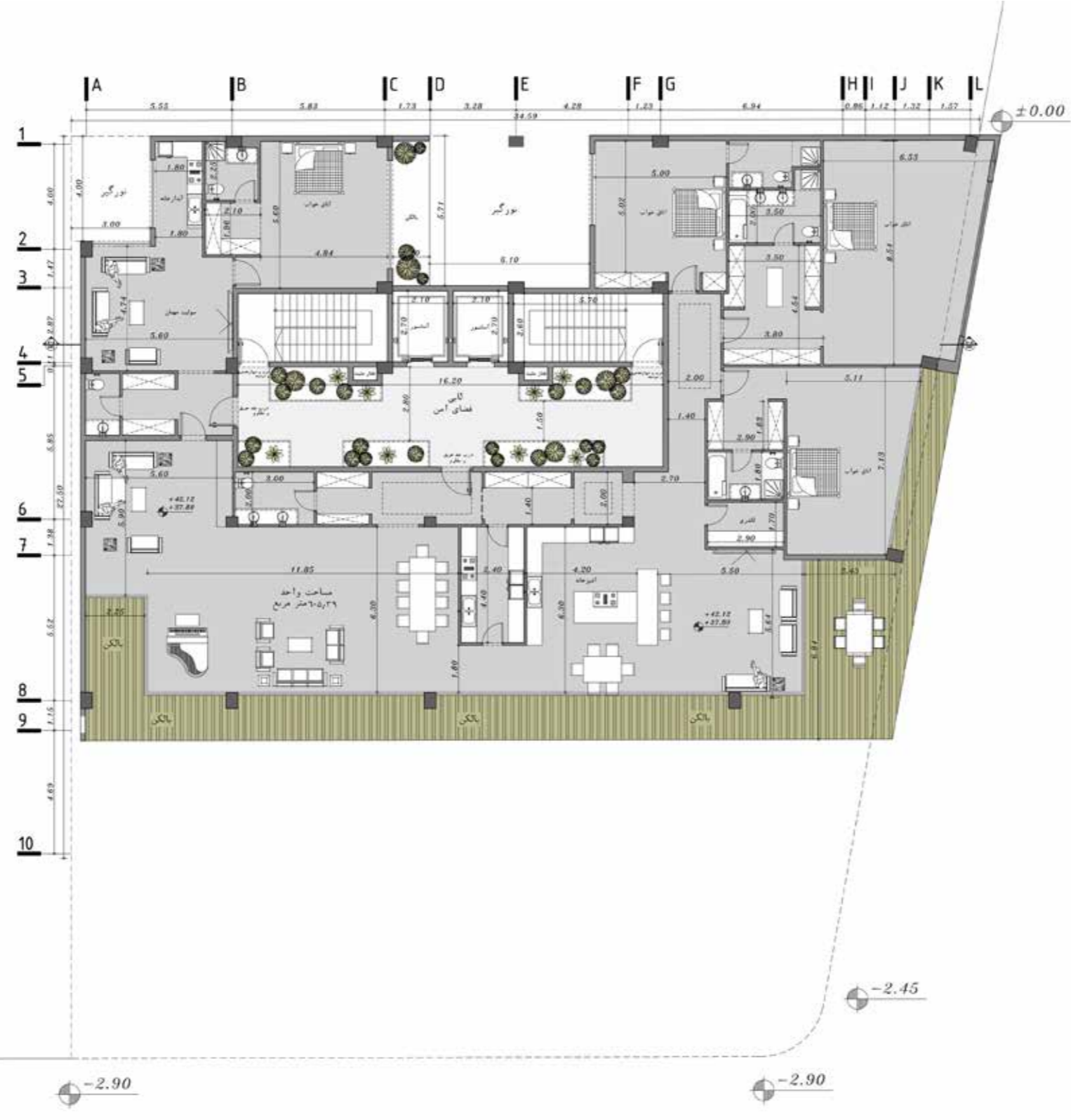
100/1 :scale



8,9 floor plan



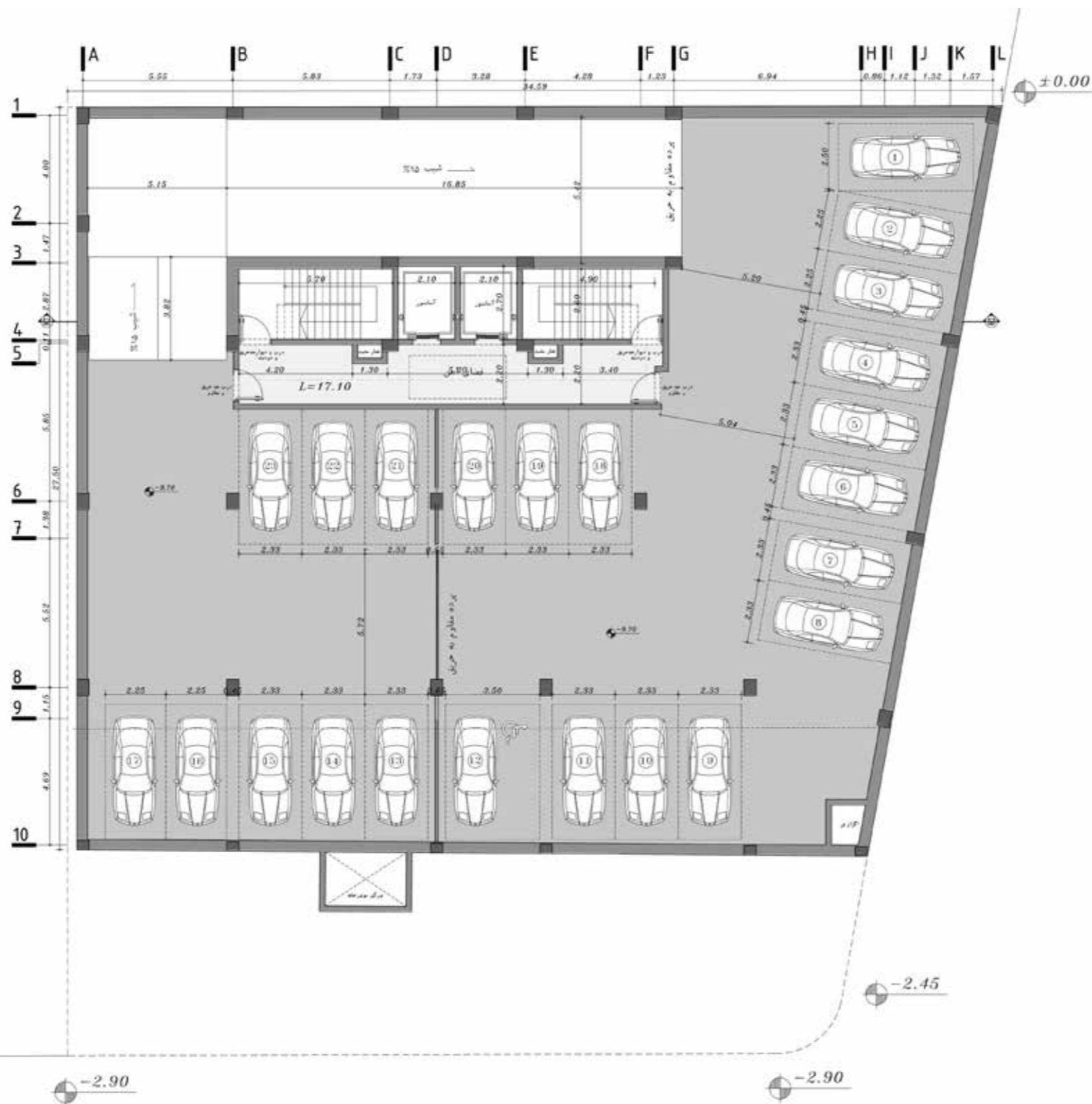
100/1 :scale



Plan Basement -2



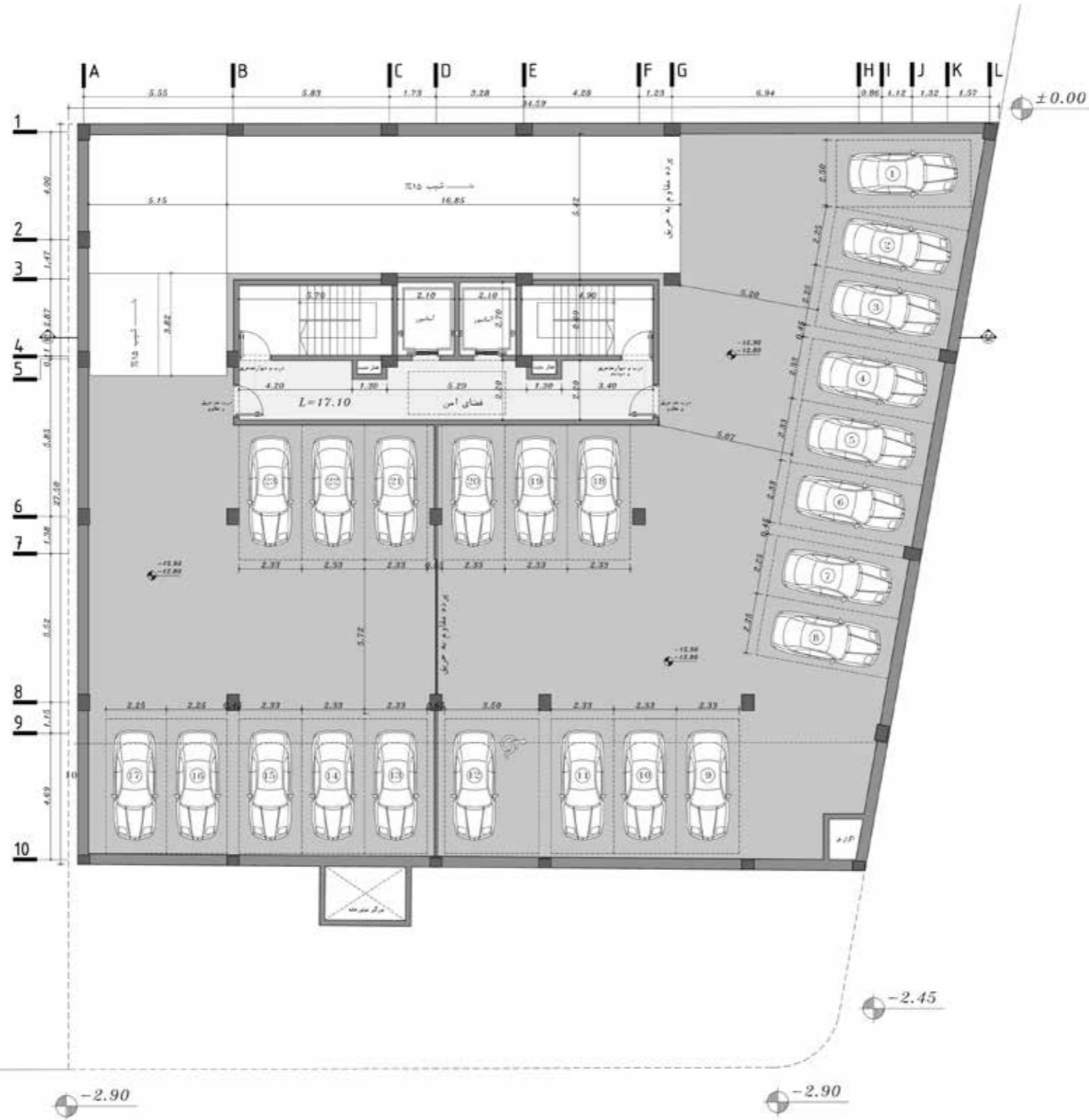
scale: 1/100



Plan Basement -3-,4



scale: 1/100



Plan Basement -5



1/100 :scale

