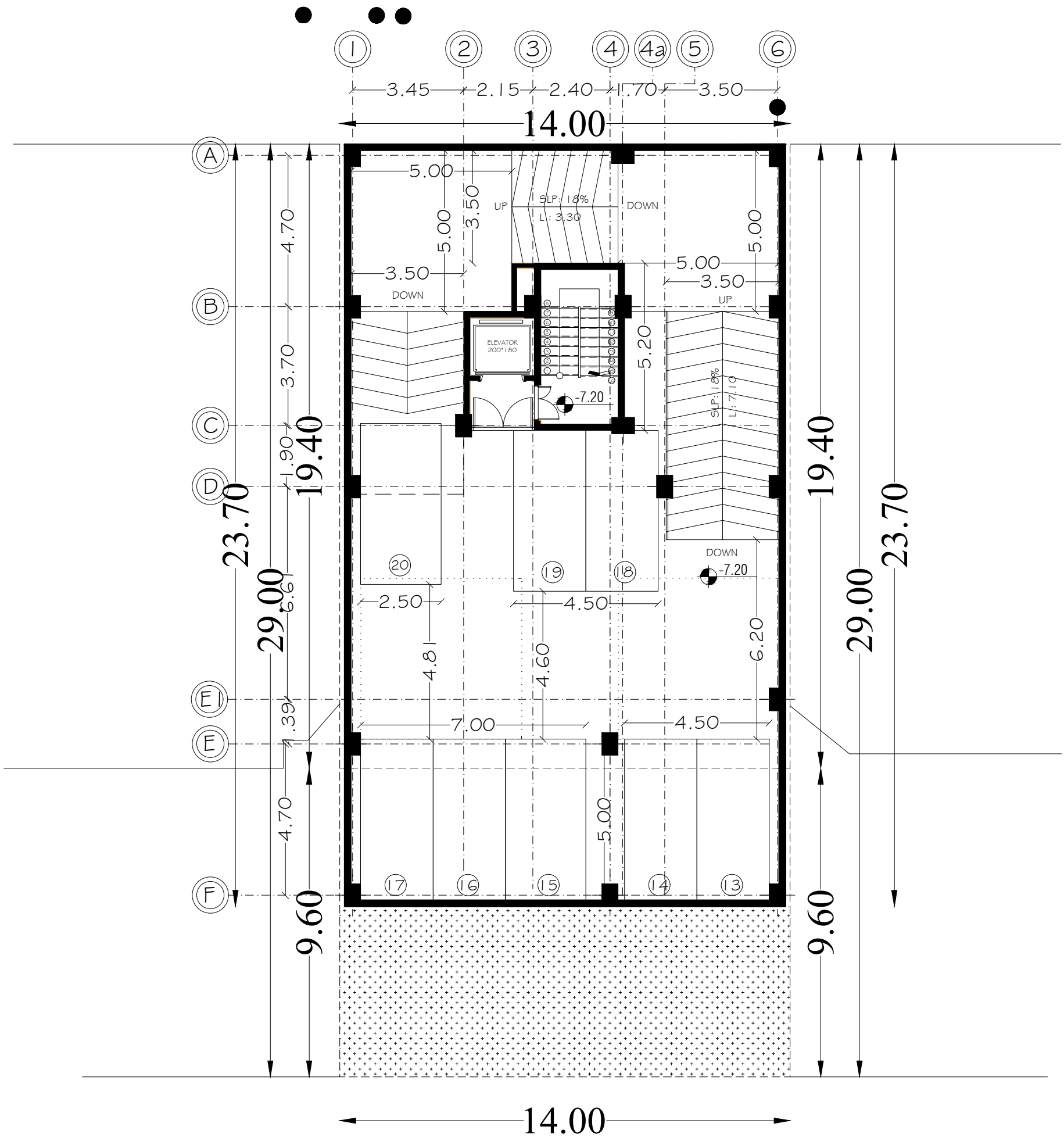
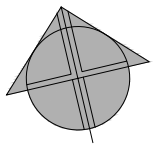


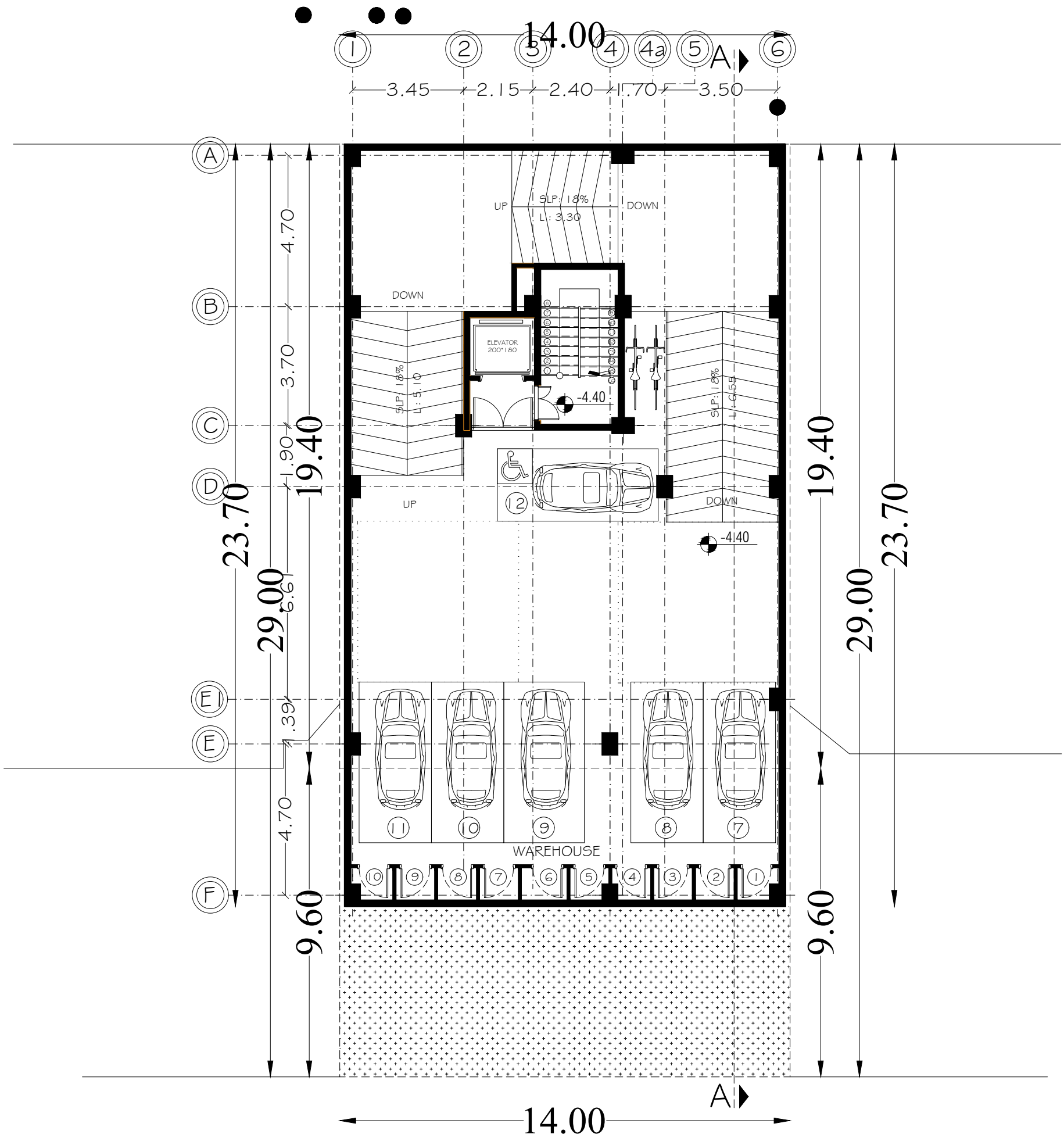
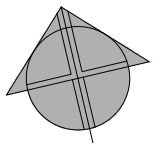
BASEMENT -3

1/13



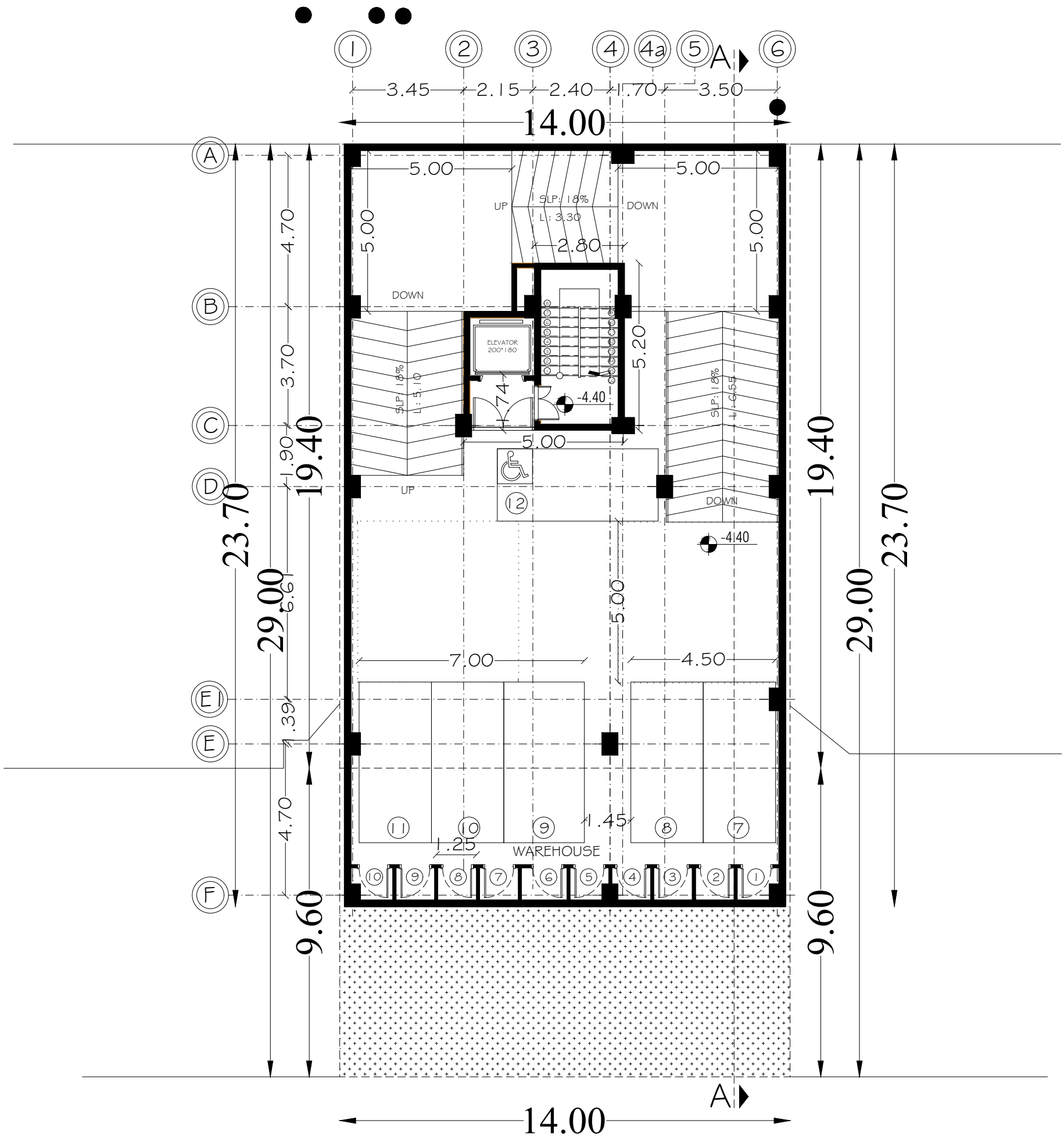
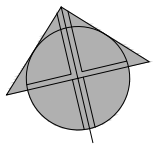
BASEMENT -3

2/13



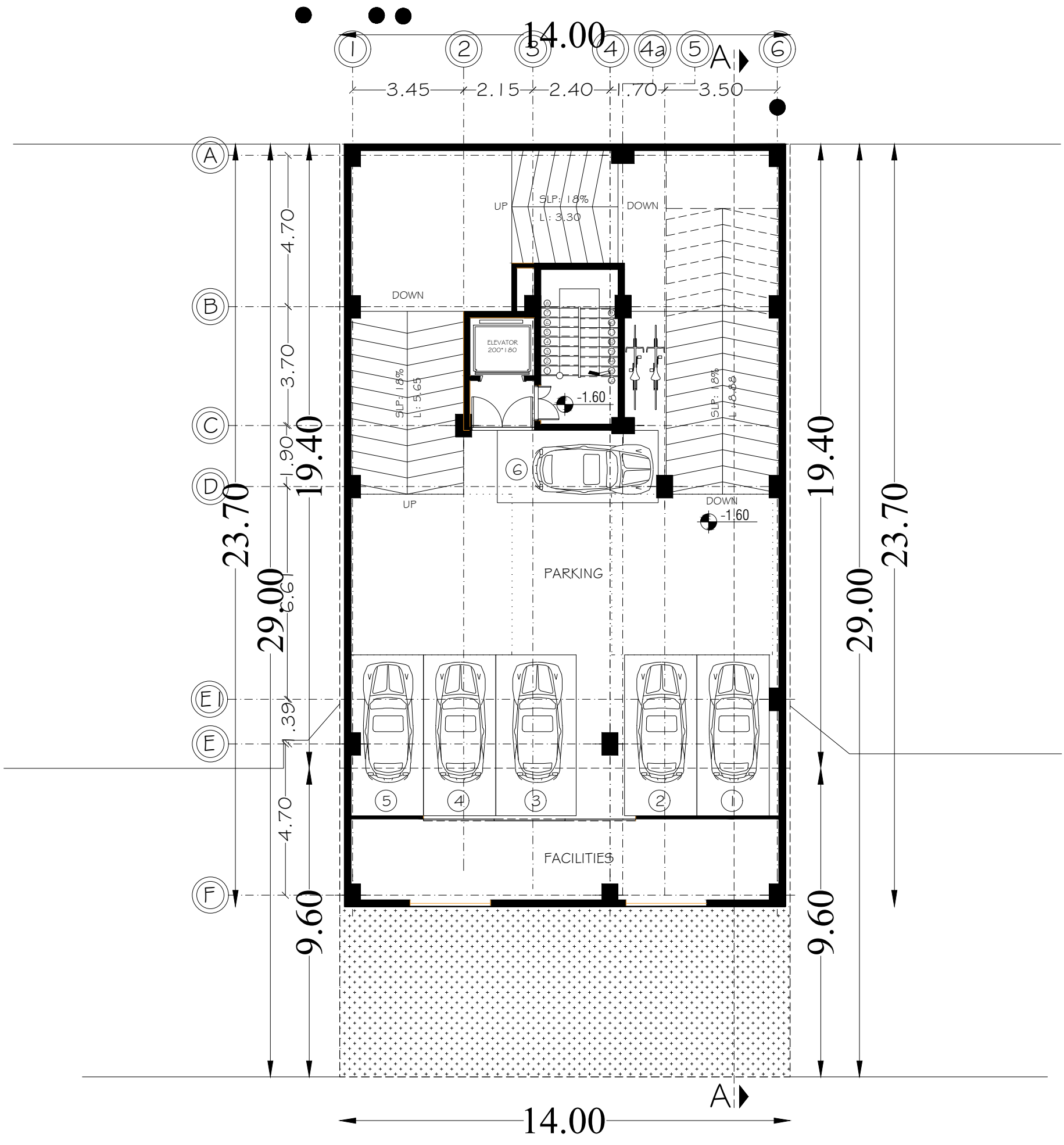
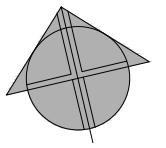
BASEMENT -2

3/13



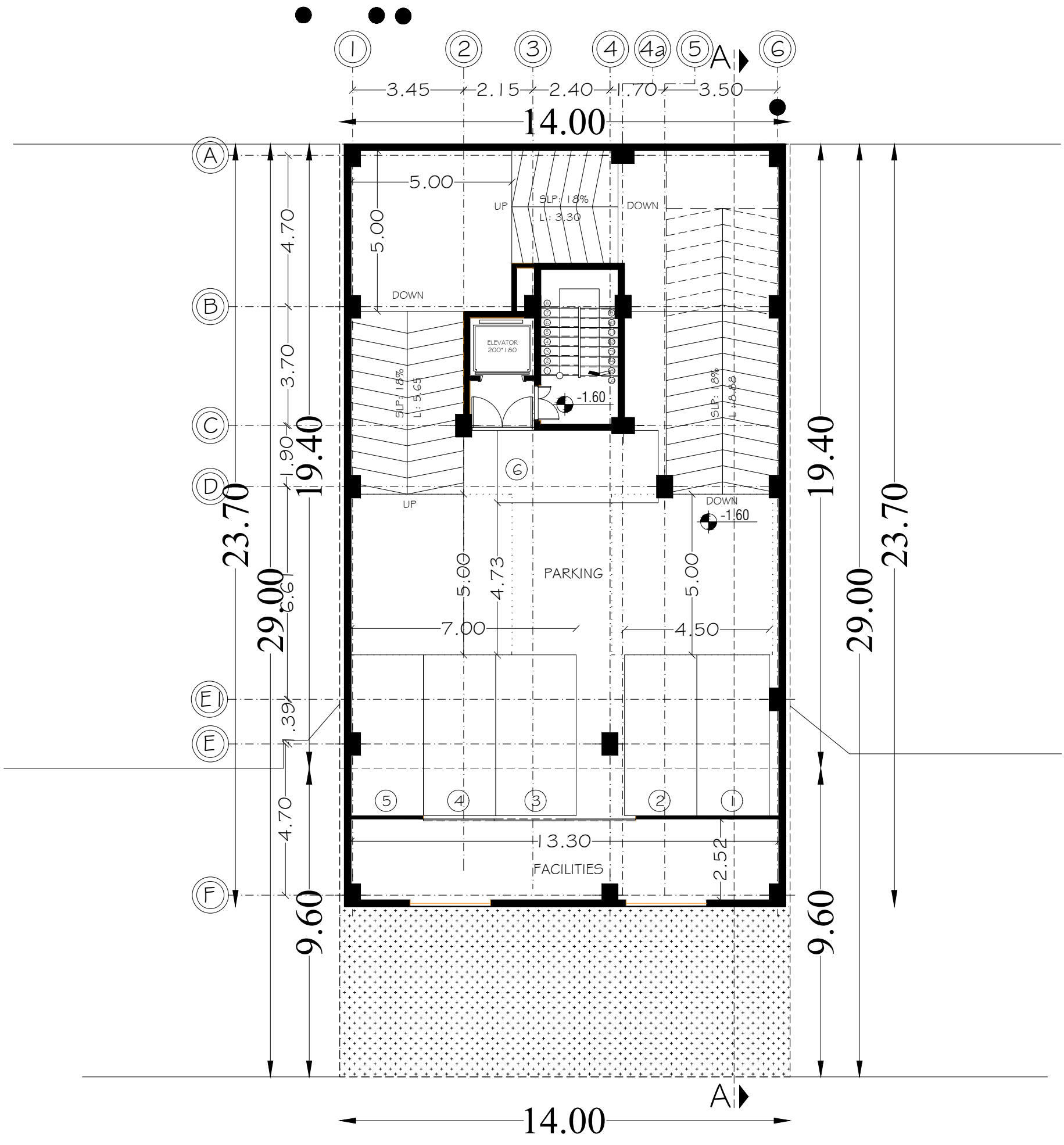
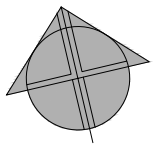
BASEMENT -2

4/13



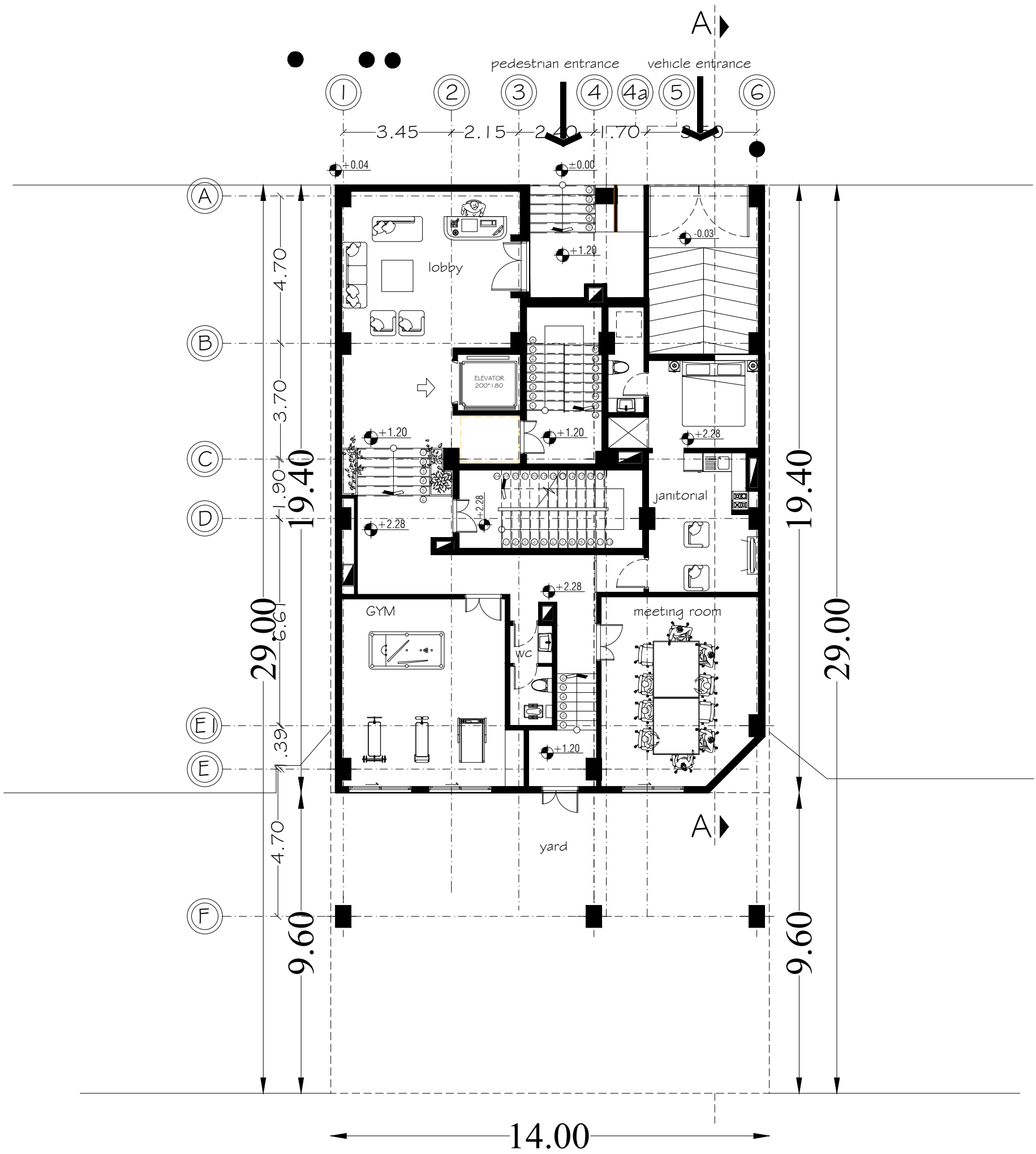
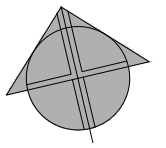
BASEMENT - 1

5/13



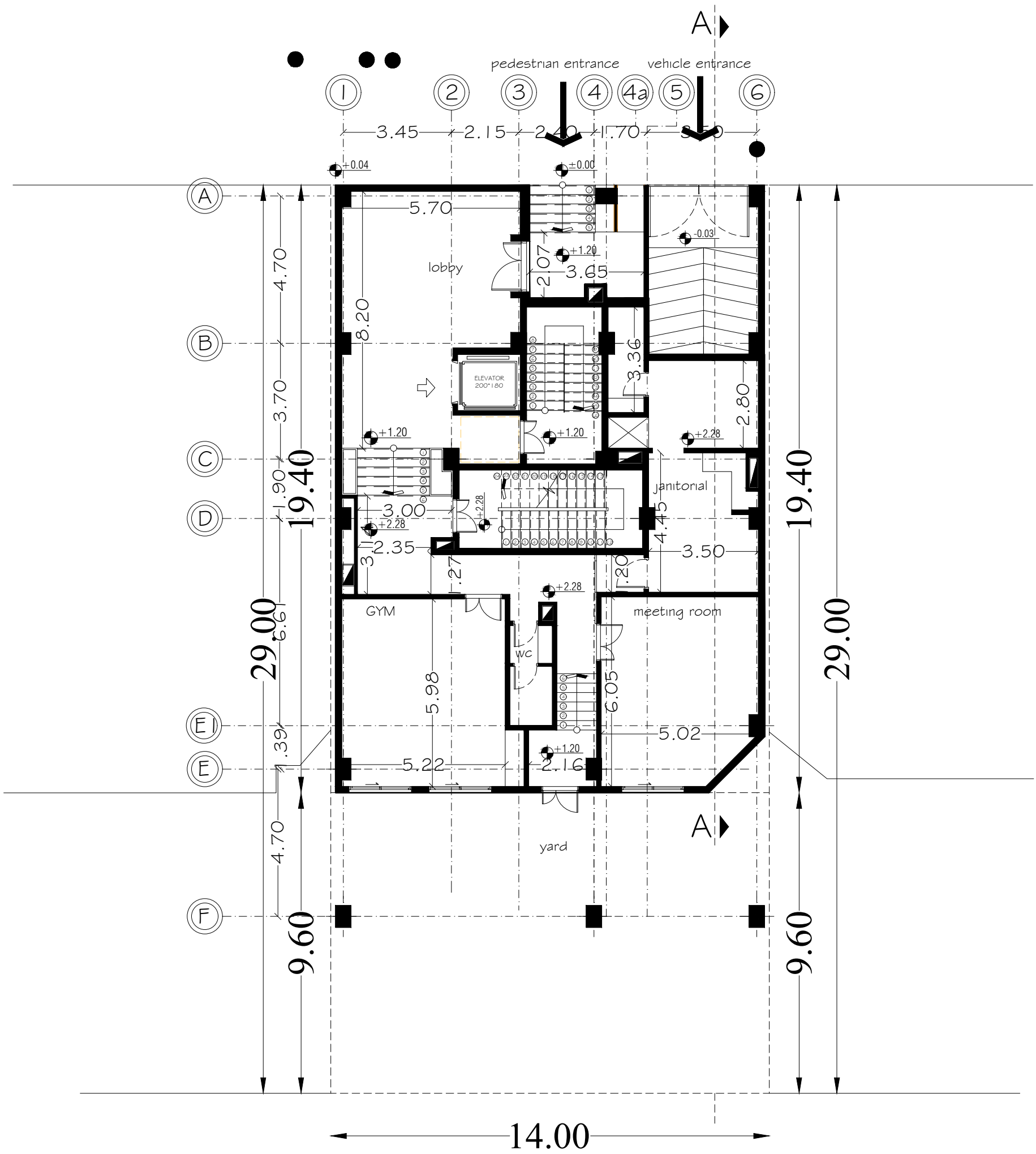
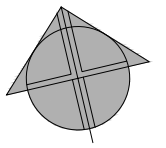
BASEMENT - 1

6/13

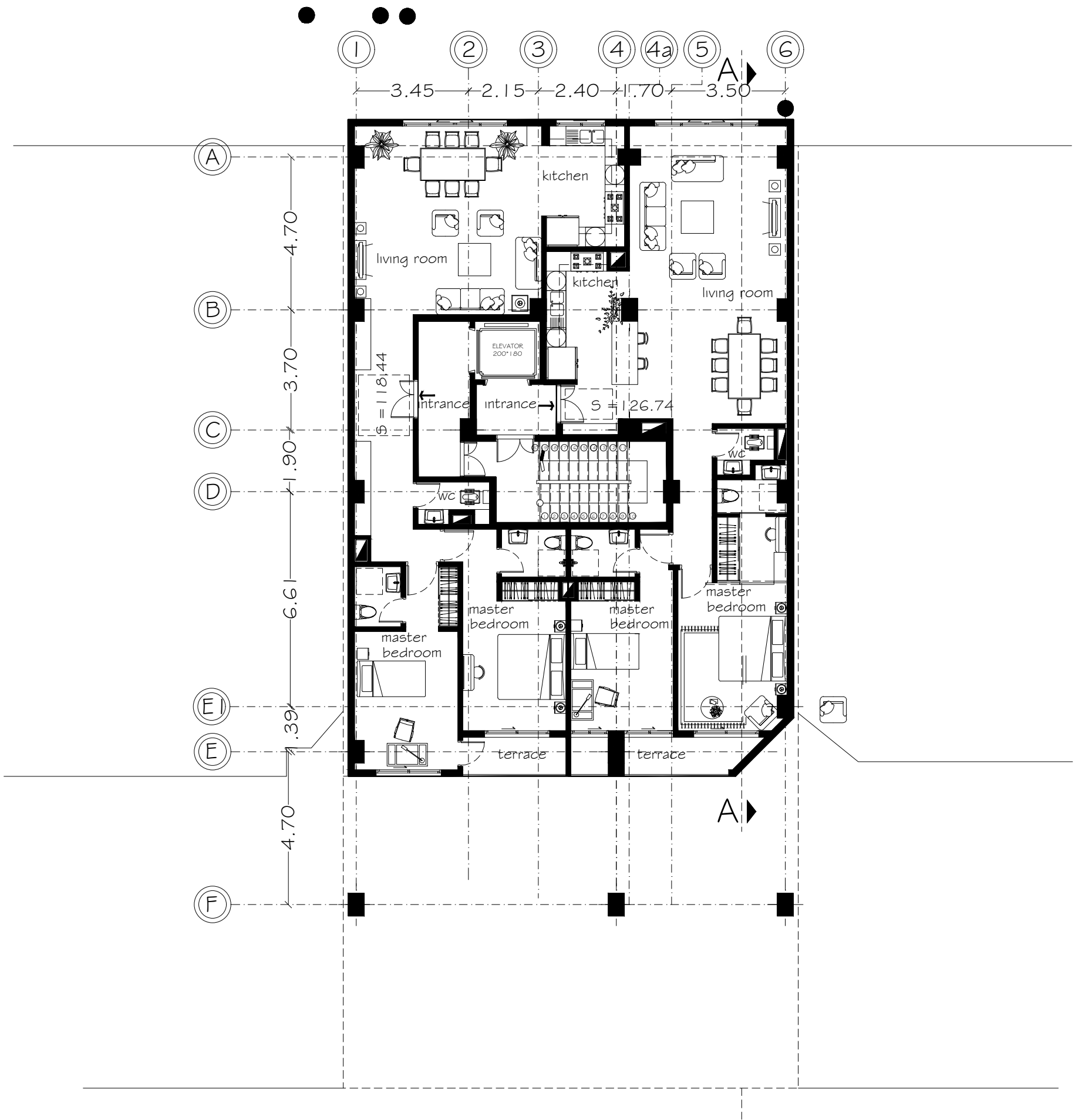
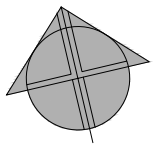


GROUND FLOOR PLAN

7/13

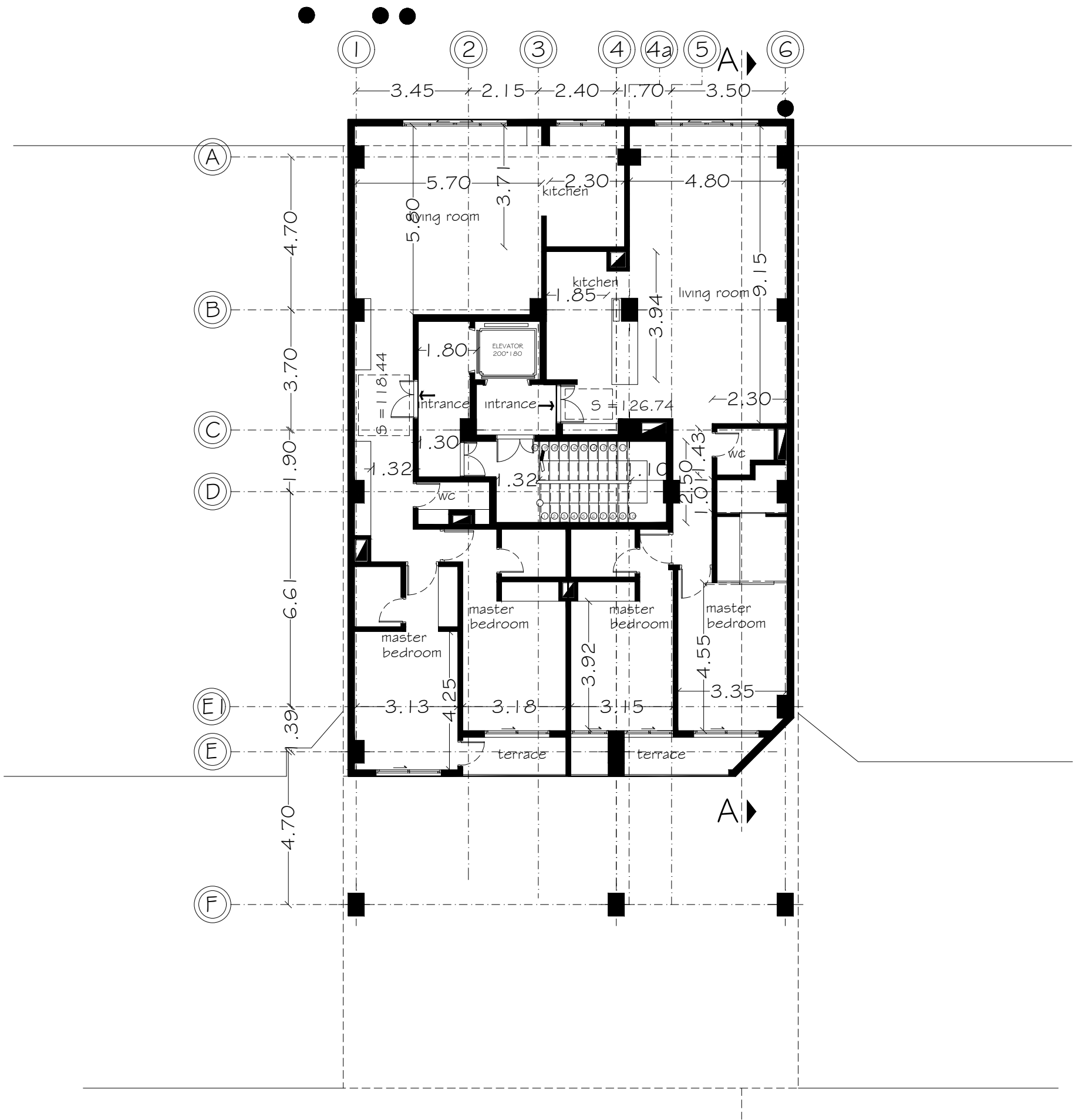
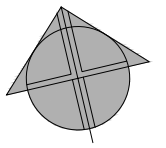


# GROUND FLOOR PLAN



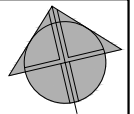
FLOOR PLAN

9/13

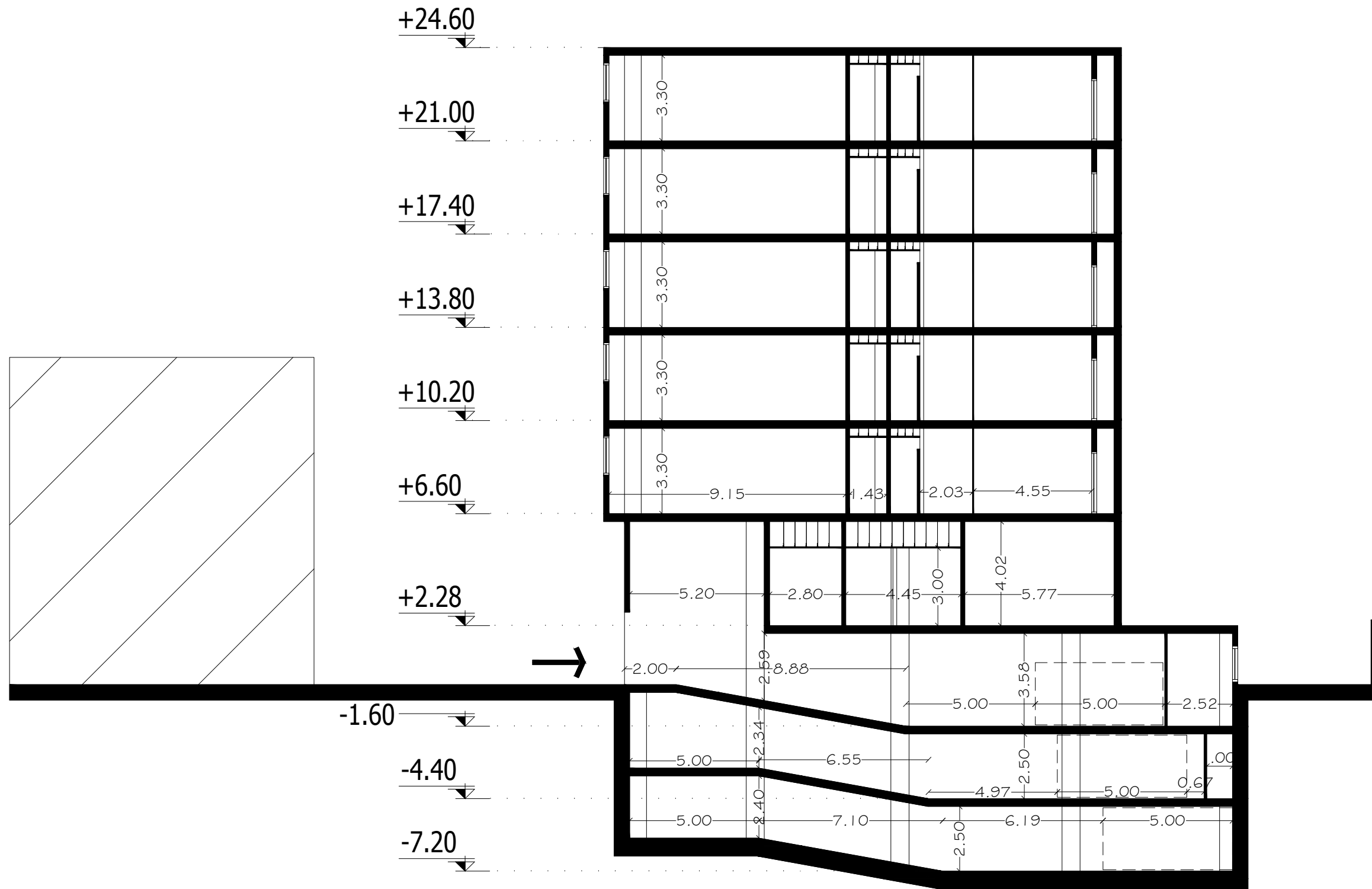
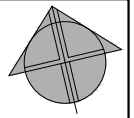


FLOOR PLAN

10/13



BORESH A-A



BORESH A-A

جدول مساحت کلی مسابقه ساختمان مردم

مساحت کل طبقه	انبار		پارکینگ مزاحم	پارکینگ سالم	اسانسیور+راهپله لابی	مسکونی		کاربری طبقات	
	مساحت	واحد				مساحت واحد	واحد		
324.69	00.00	00	00	8	-	-	-	3- زیرزمین	
324.69	1.3	10	00	6	-	-	-	2- زیرزمین	
324.69	00.00	00	00	6	-	-	-	1- زیرزمین	
264.17	-	-	-	-	-	-	-	همکف	
275.13	-	-	-	-	00.00	126.74 118.44	275.13	2	طبقه اول
275.13	-	-	-	-	00.00	126.74 118.44	275.13	2	طبقه دوم
275.13	-	-	-	-	00.00	126.74 118.44	275.13	2	طبقه سوم
275.13	-	-	-	-	00.00	126.74 118.44	275.13	2	طبقه چهارم
275.13	-	-	-	-	00.00	126.74 118.44	275.13	2	طبقه پنجم
مساحت کل مجموع	مجموع مساحت انبار		مجموع تعداد پارکینگ مزاحم	مجموع تعداد پارکینگ سالم	-	مجموع مساحت مسکونی		جمع	
<b>2613.89</b>	13.00	10	00	20	-	1225.9	10		