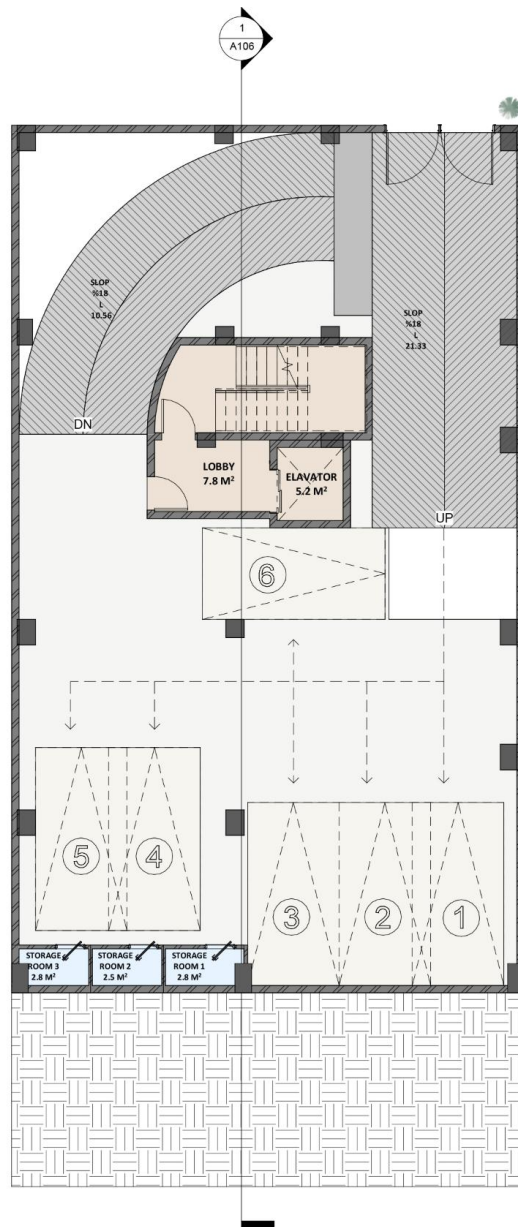
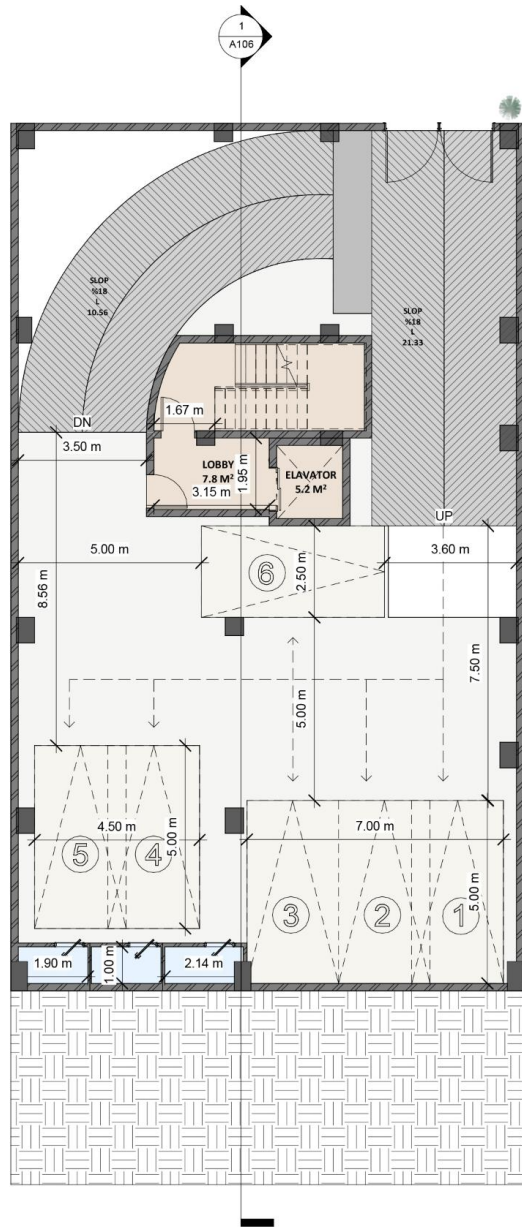


Hermes Residential Building

Residential | March 2026 | Farmanieh – Tehran

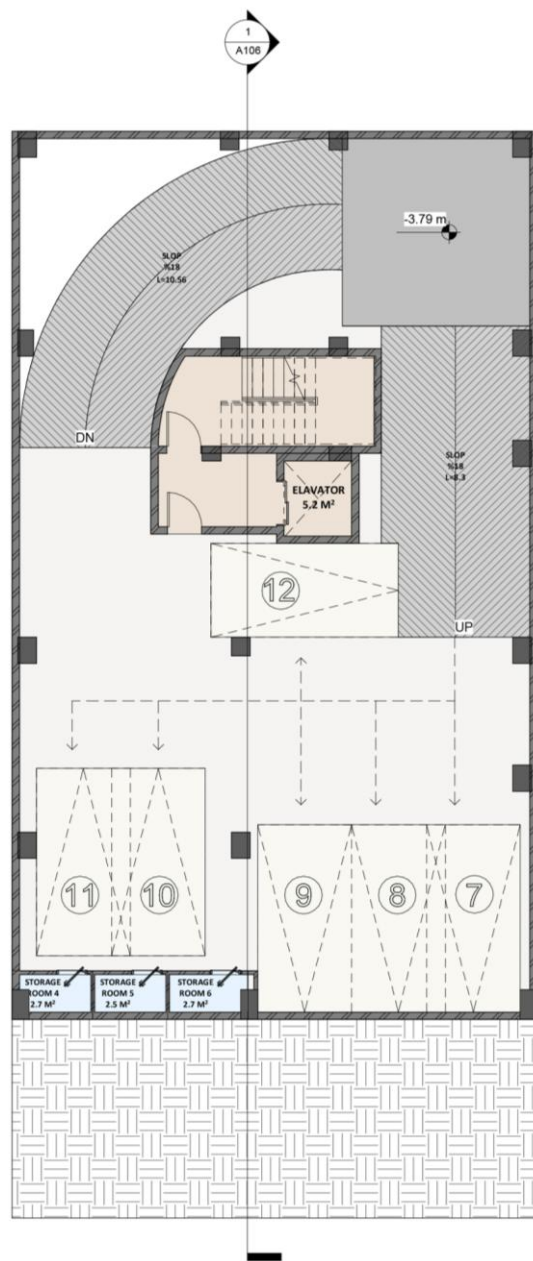
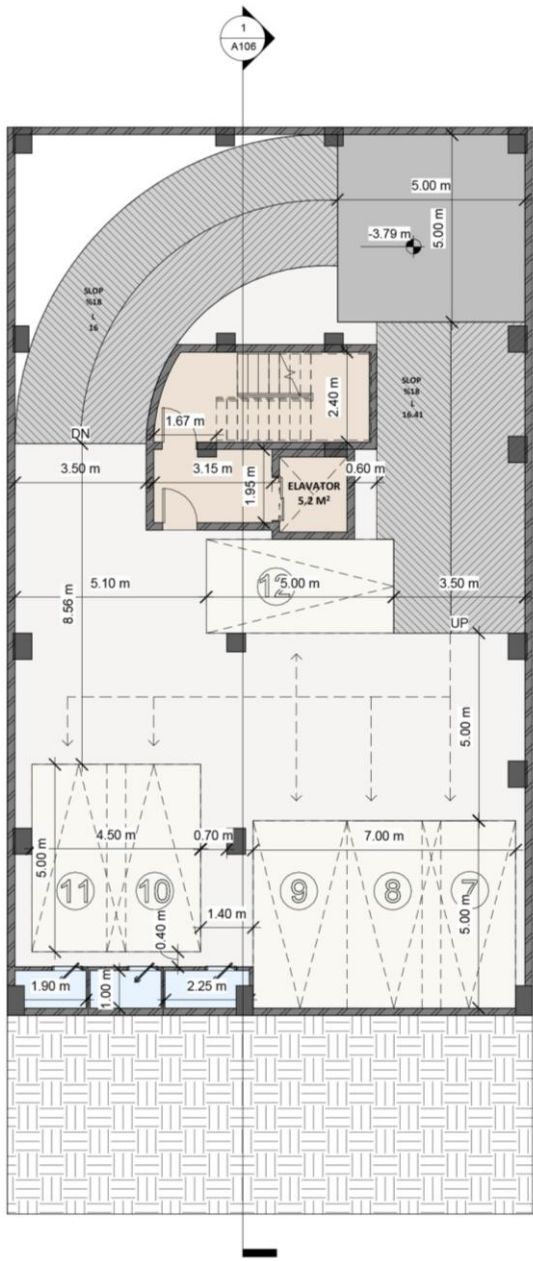




Basement Level (-1)



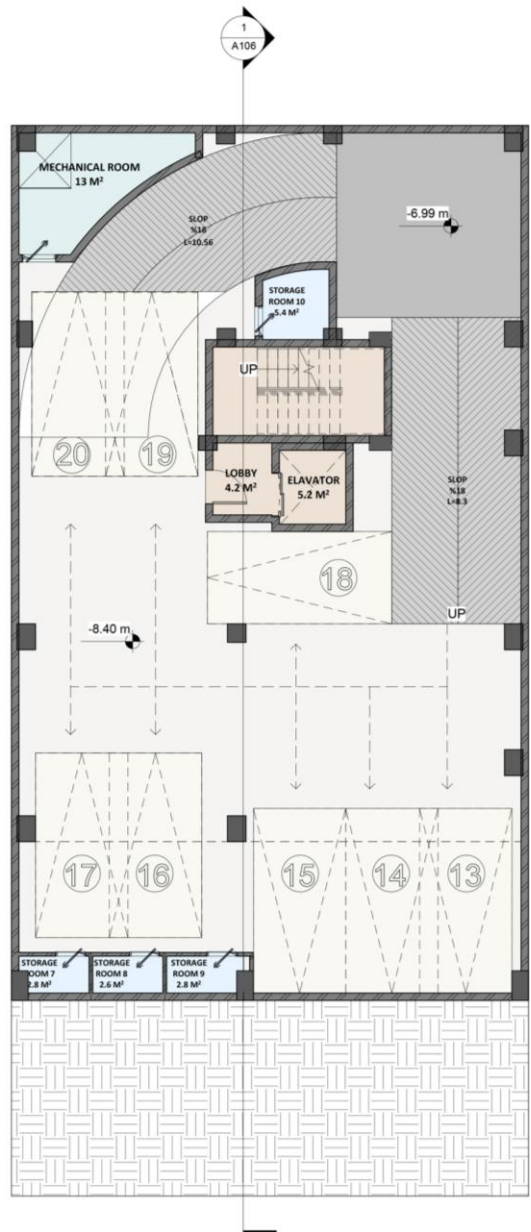
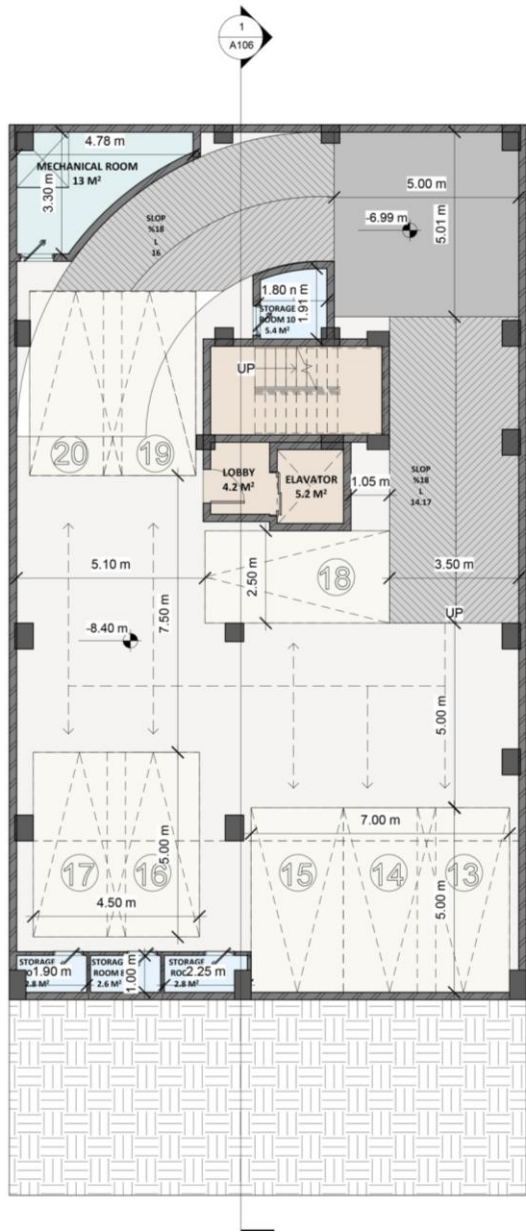
Total area of Basement Level (-1)		331.80 (m ²)
Parking spaces count		6
Storage units count		3



Basement Level (-2)



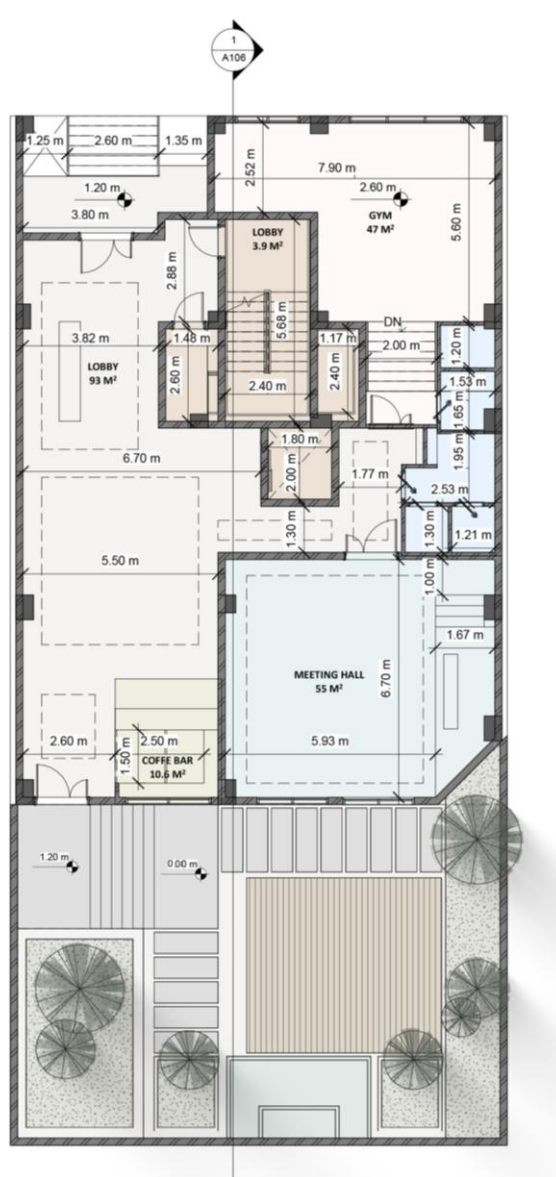
Total area of Basement Level (-2)	331.80(m ²)
Parking spaces count	6
Storage units count	3



Basement Level (-3)



Total area of Basement Level (-3)	331.80(m ²)
Parking spaces count	8
Storage units count	4
Mechanical Room	13(m ²)



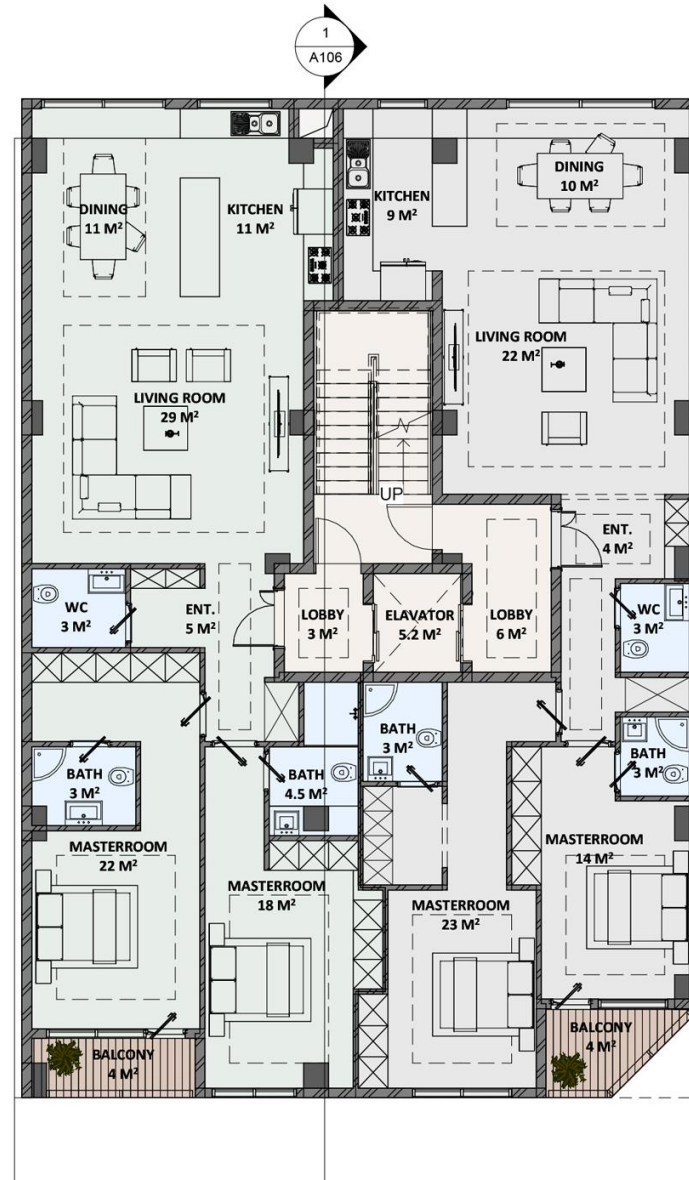
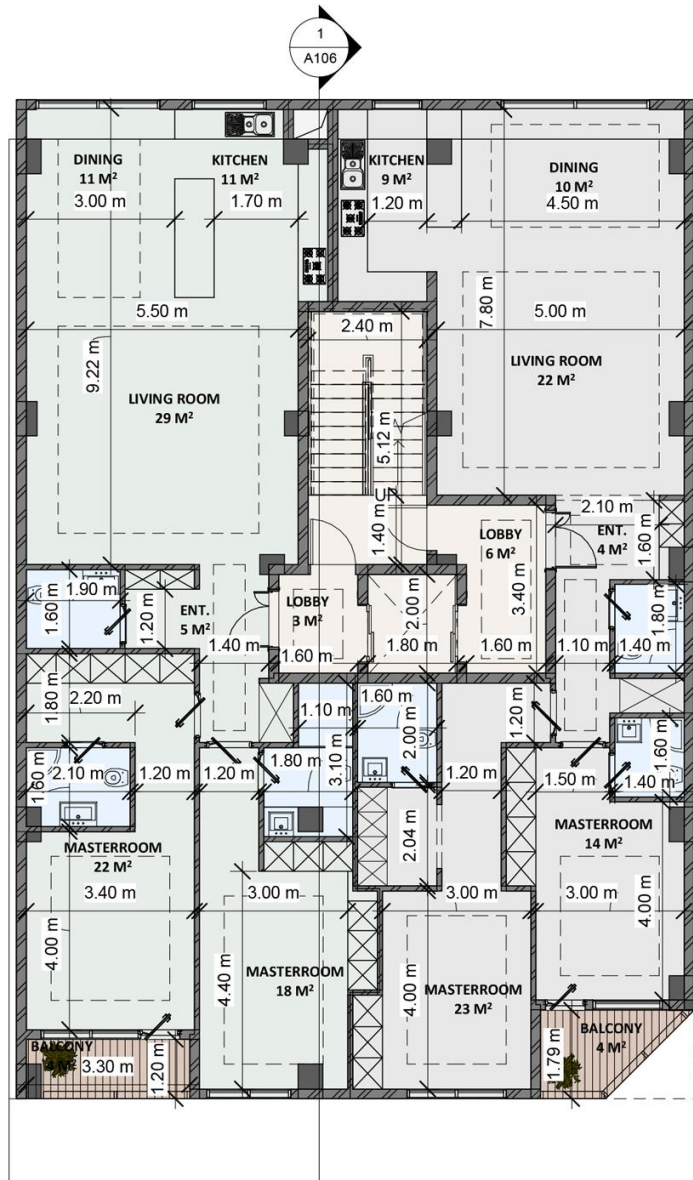
Ground Floor Plan



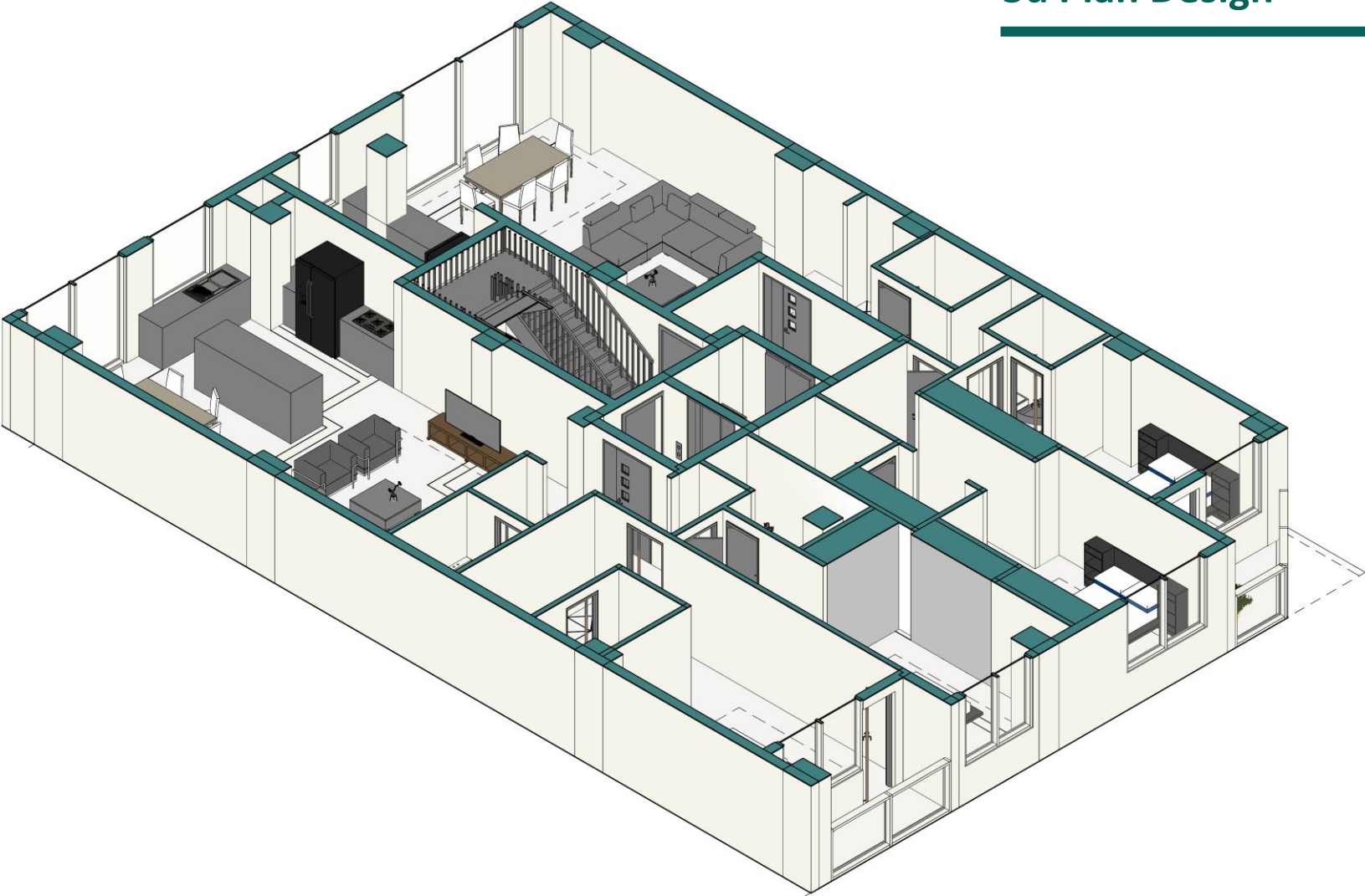
Ground Floor Plan	264.17(m ²)
lobby	93(m ²)
gym	47(m ²)
Meeting Hall	55(m ²)
Coffee Bar	10.6(m ²)

Floors Plan

Floors Plan	275.13(m ²)
Eastern Unit	119.07(m ²)
Western Unit	129.13(m ²)
Commons	26.93(m ²)



3d Plan Design



Section A-A



