



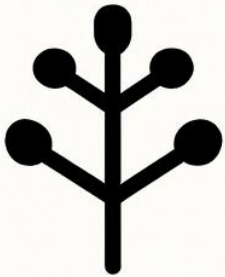
GHESHM

NOVEMBER 2025

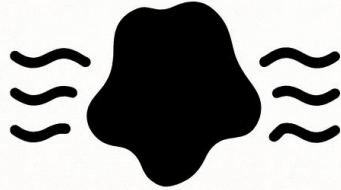
00

CONCEPT DESIGN

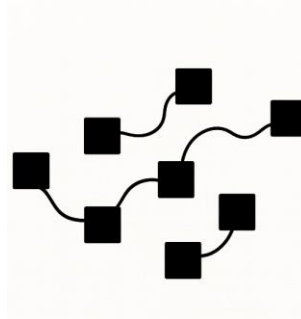
**Natural Radial
Pattern
Branching
Diagram of a
Mangrove
System
Natural Fractal
Organic and
Radial**



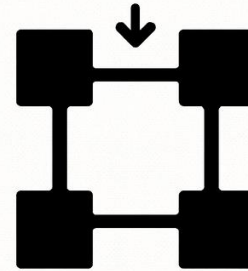
**Water-based
suite
arrangement
inspired by an
island concept**



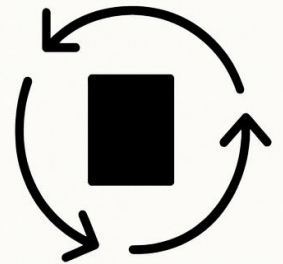
**Distributed
arrangement of
detached suites
optimized for hot
and humid
climates**



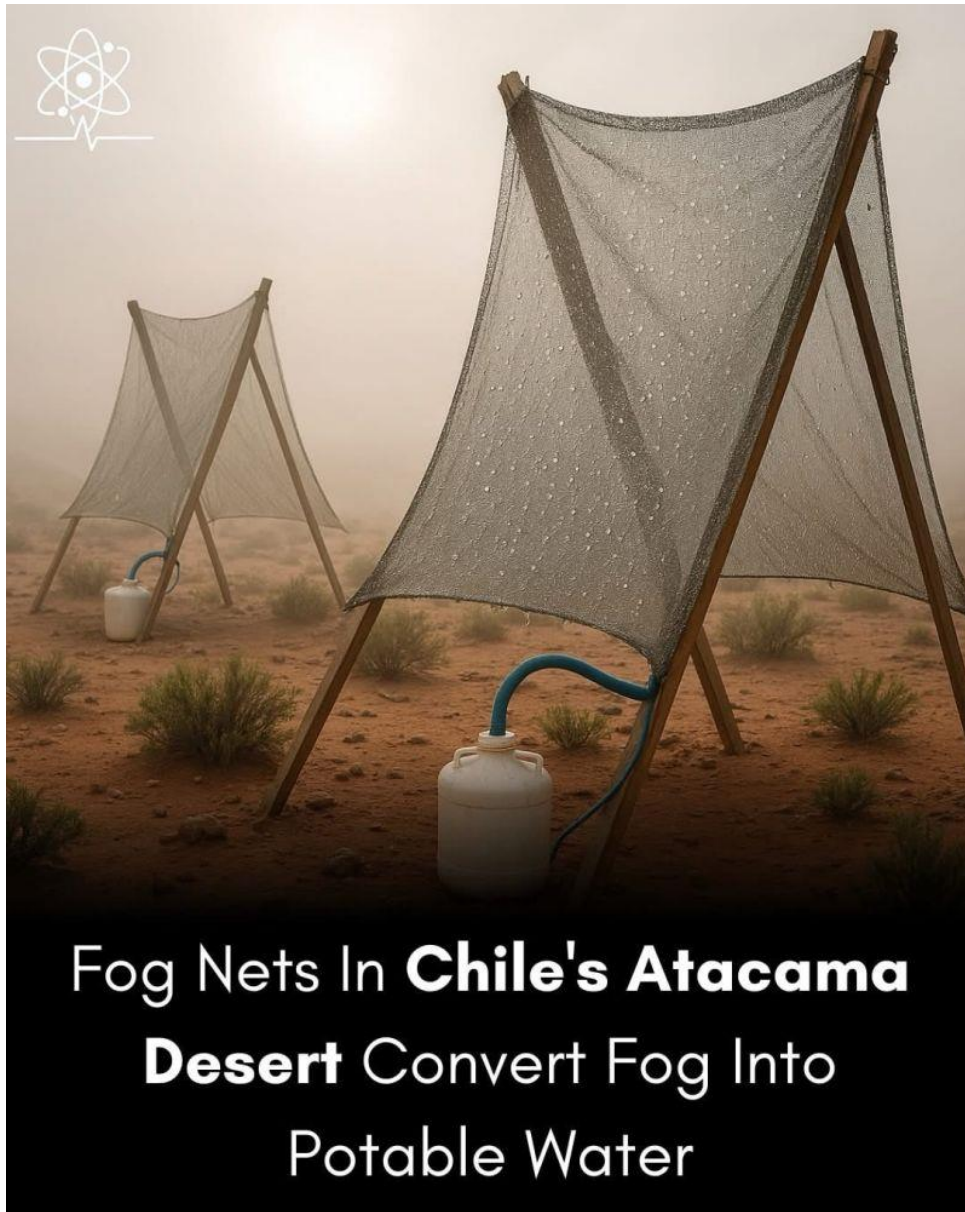
**Introverted
architecture -
suites facing a
central Iranian
courtyard**

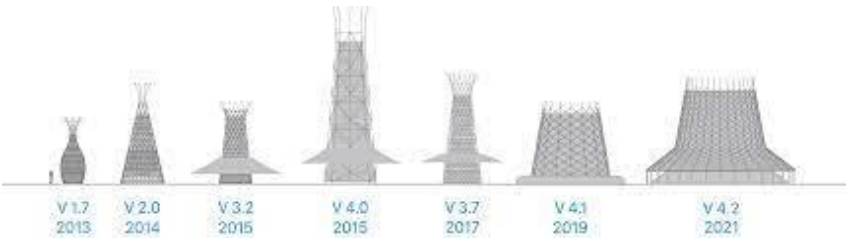


**Climate-
responsive and
sustainable
design**







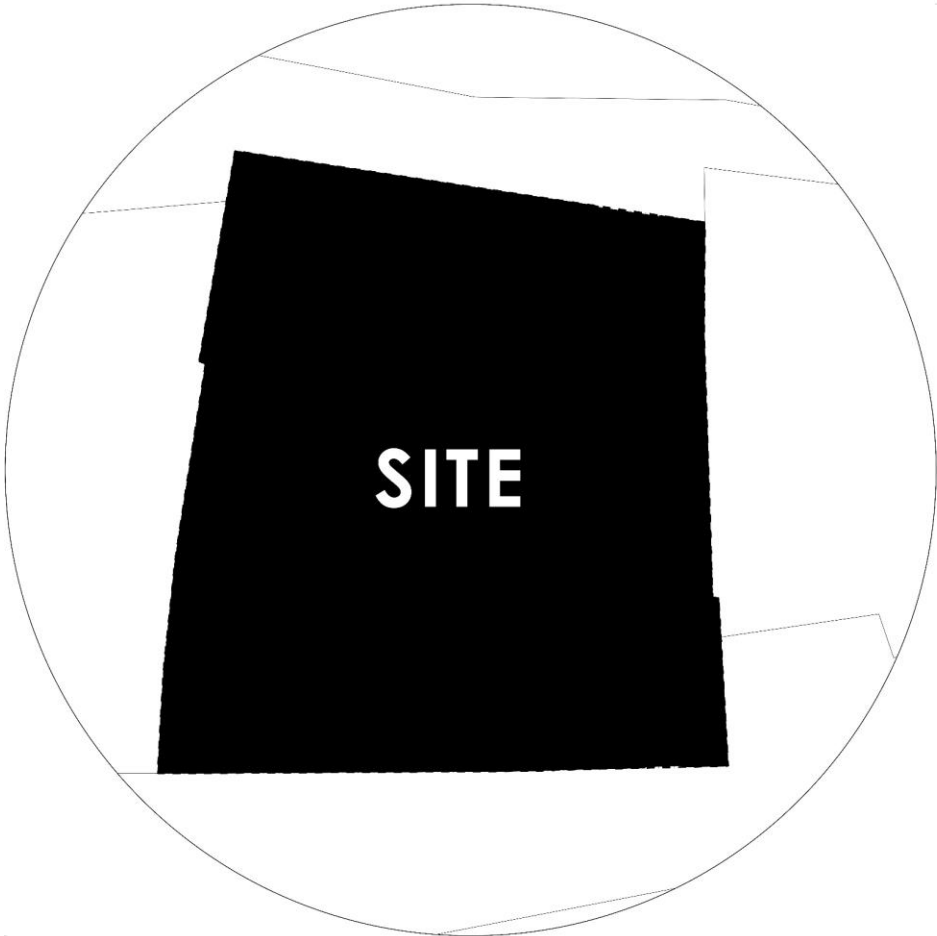


NOVEMBER 24 2025



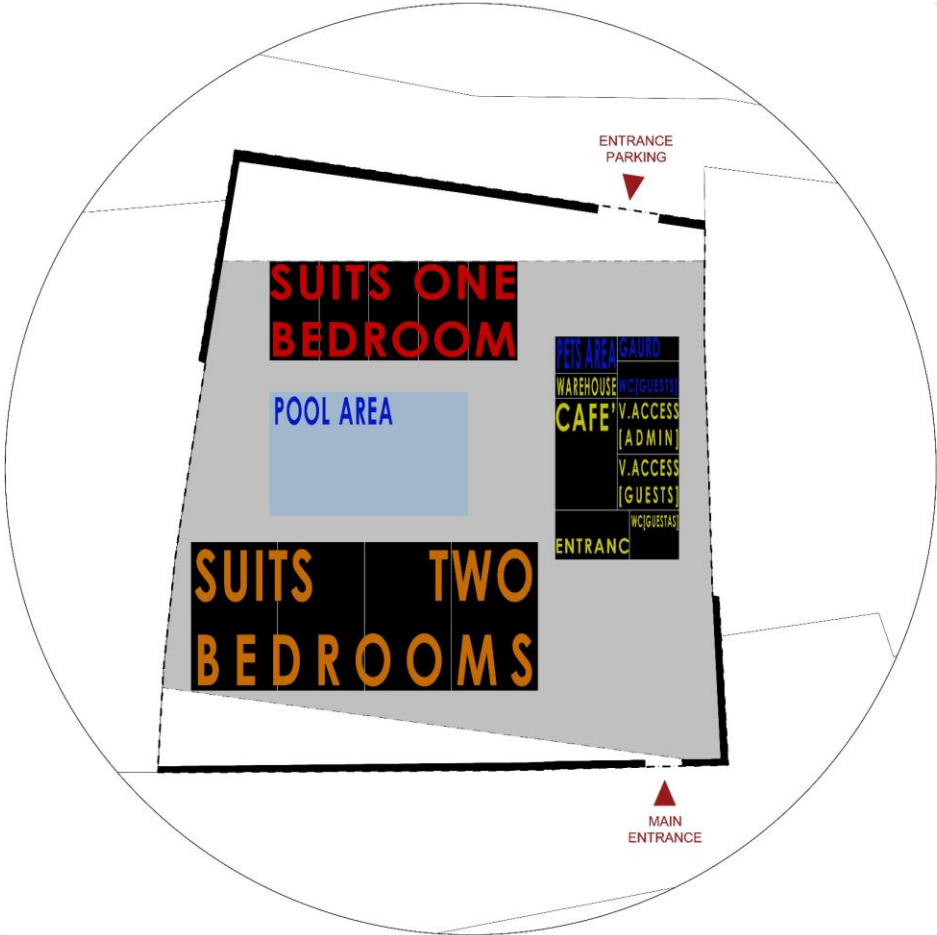
01

PLAN DIAGRAM



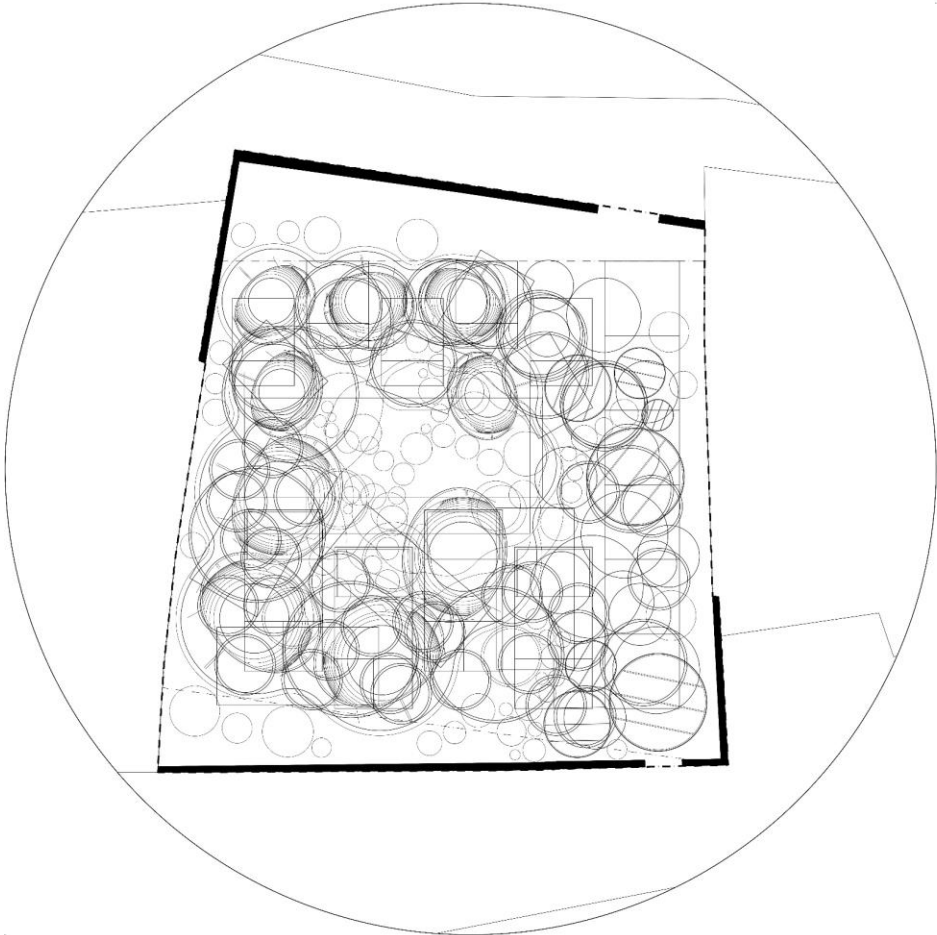


GROUND FLOOR



BASEMENT FLOOR



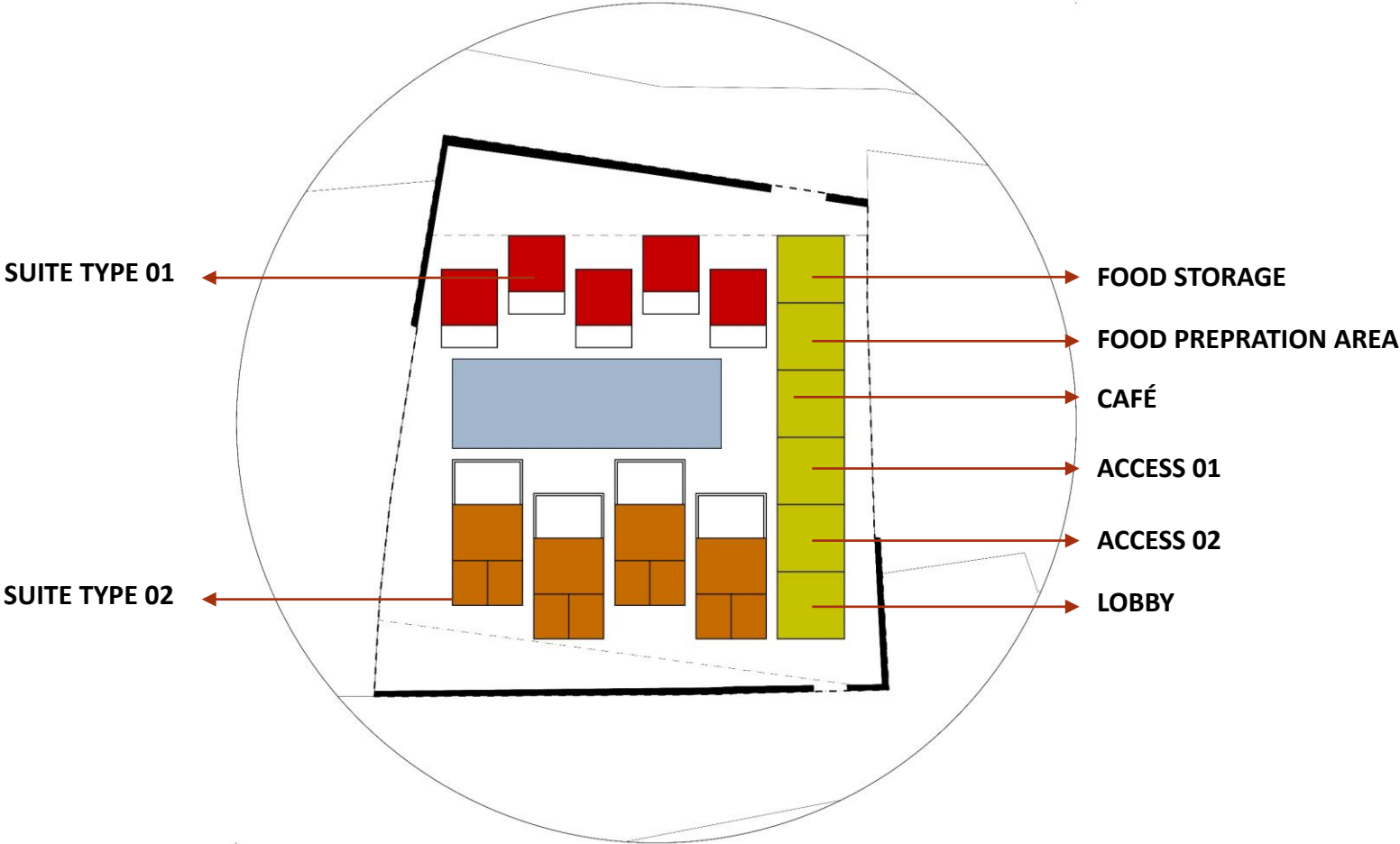


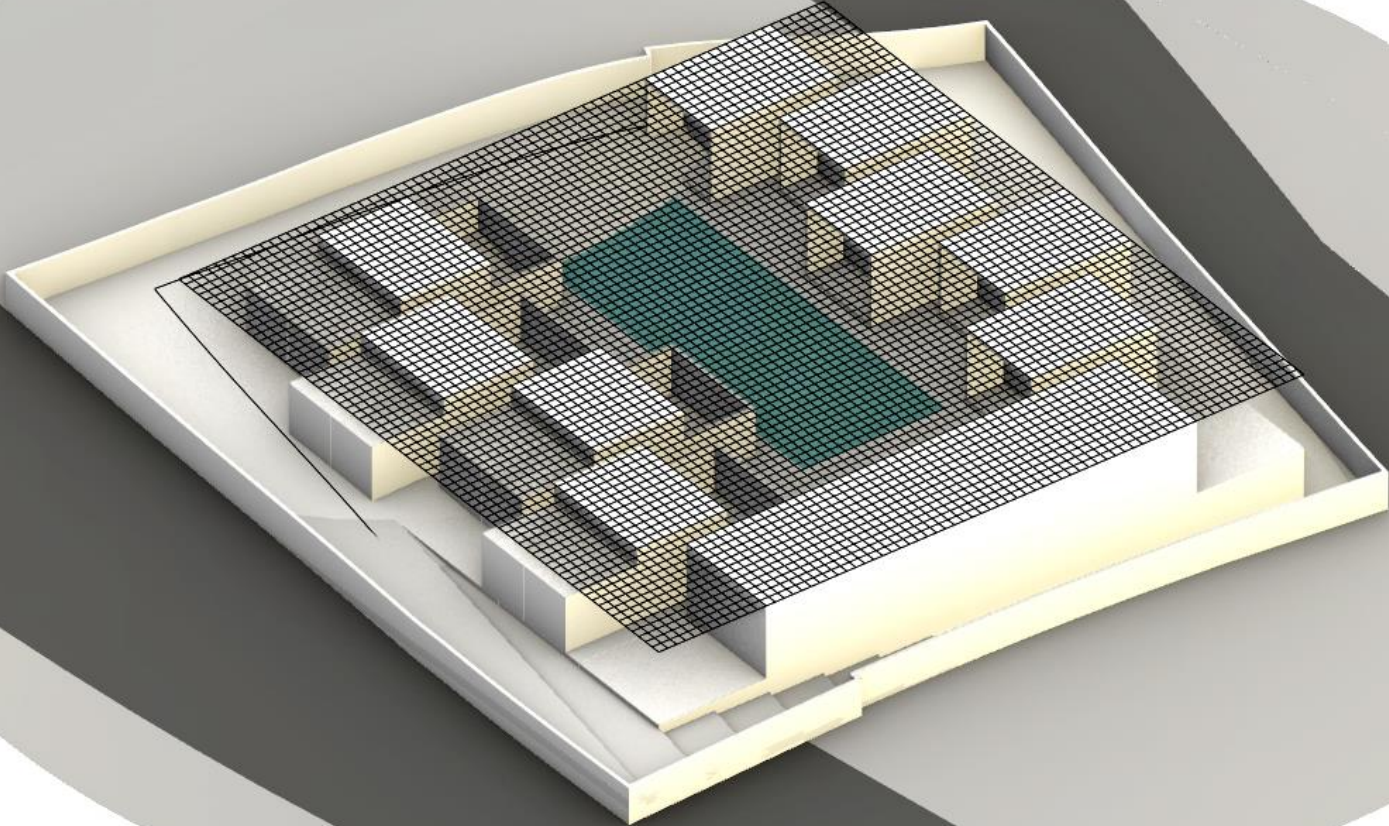
ALT 01

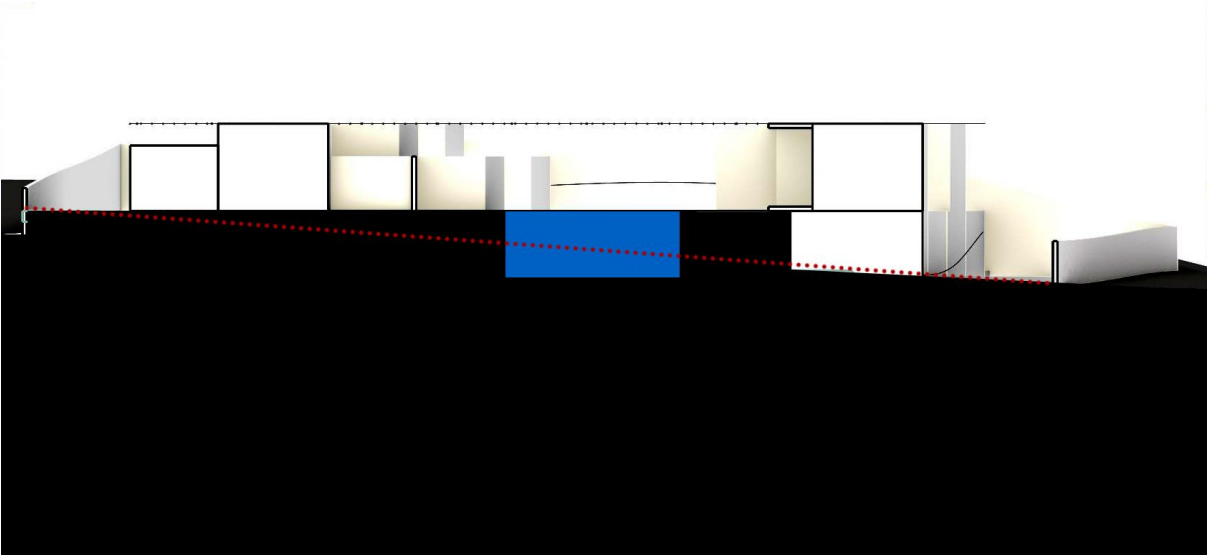
SITE PLAN

ARRANGEMENT





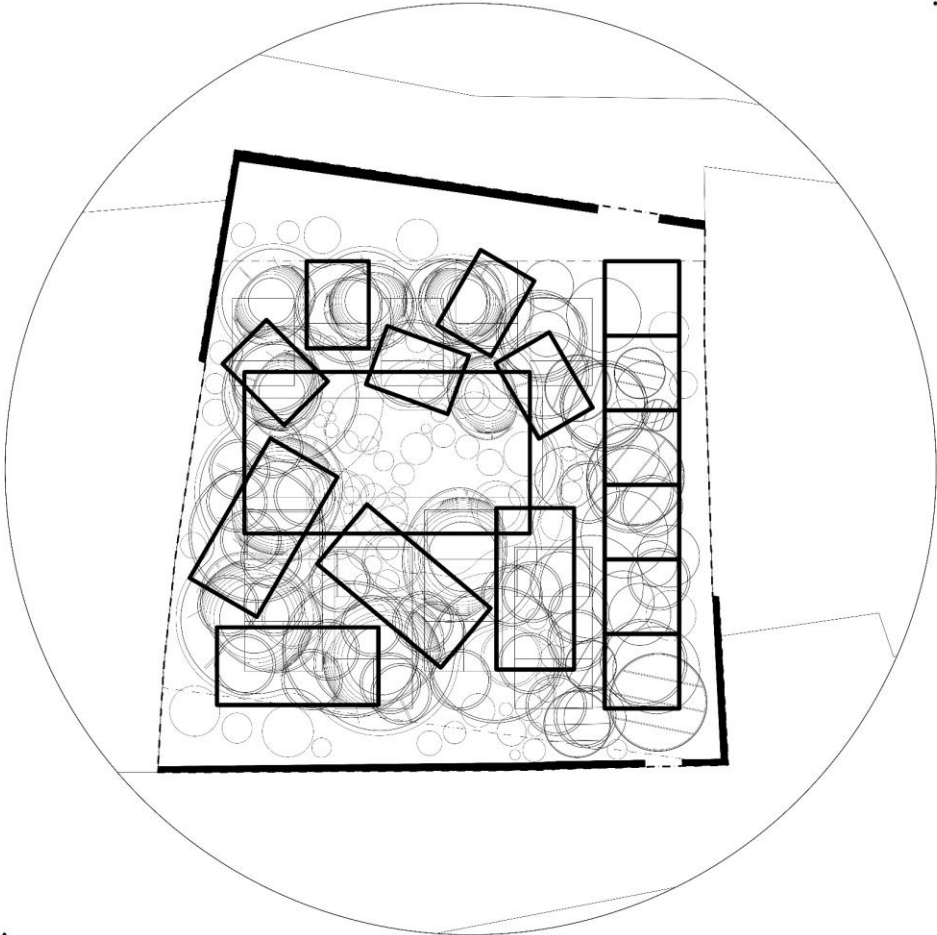


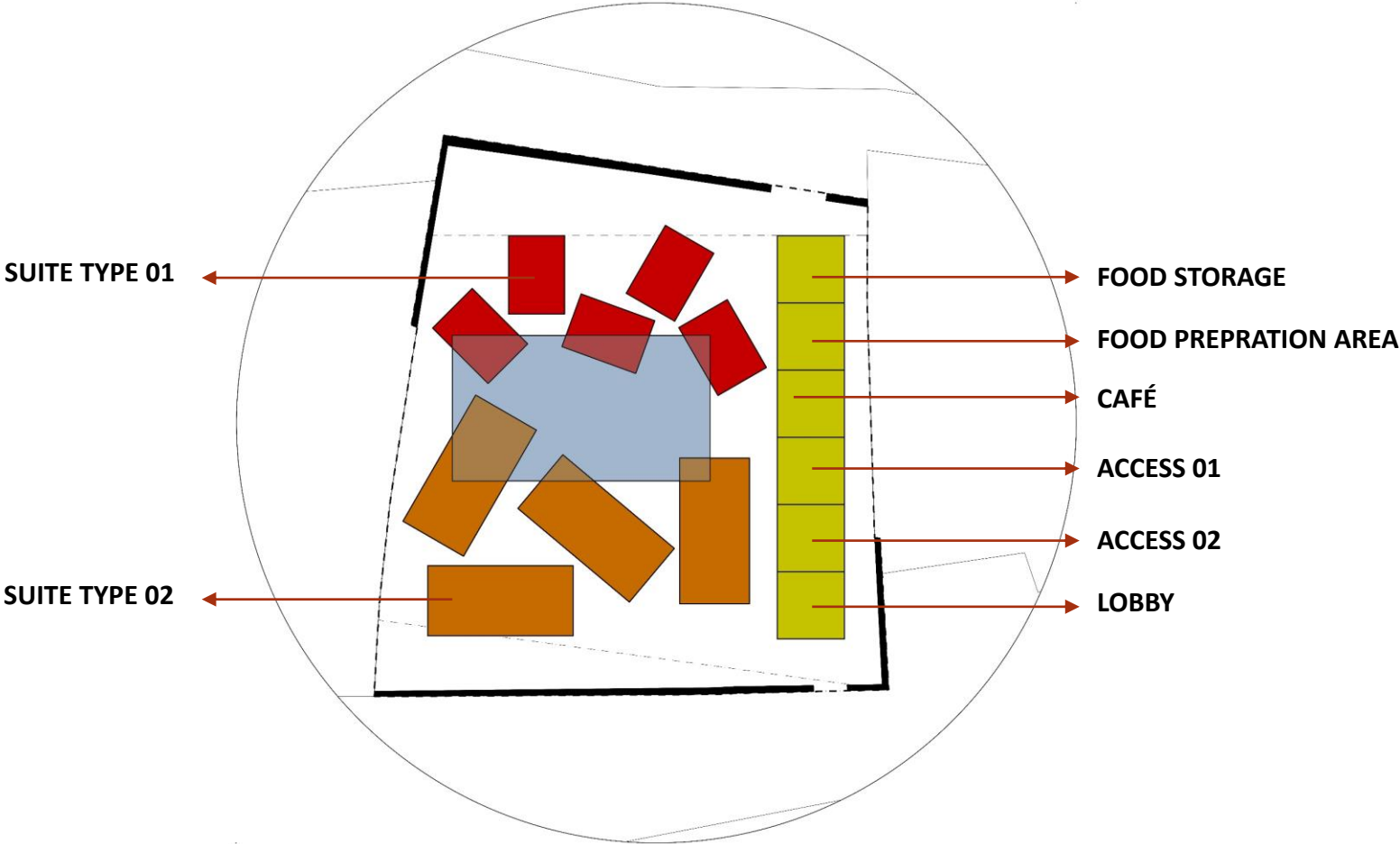


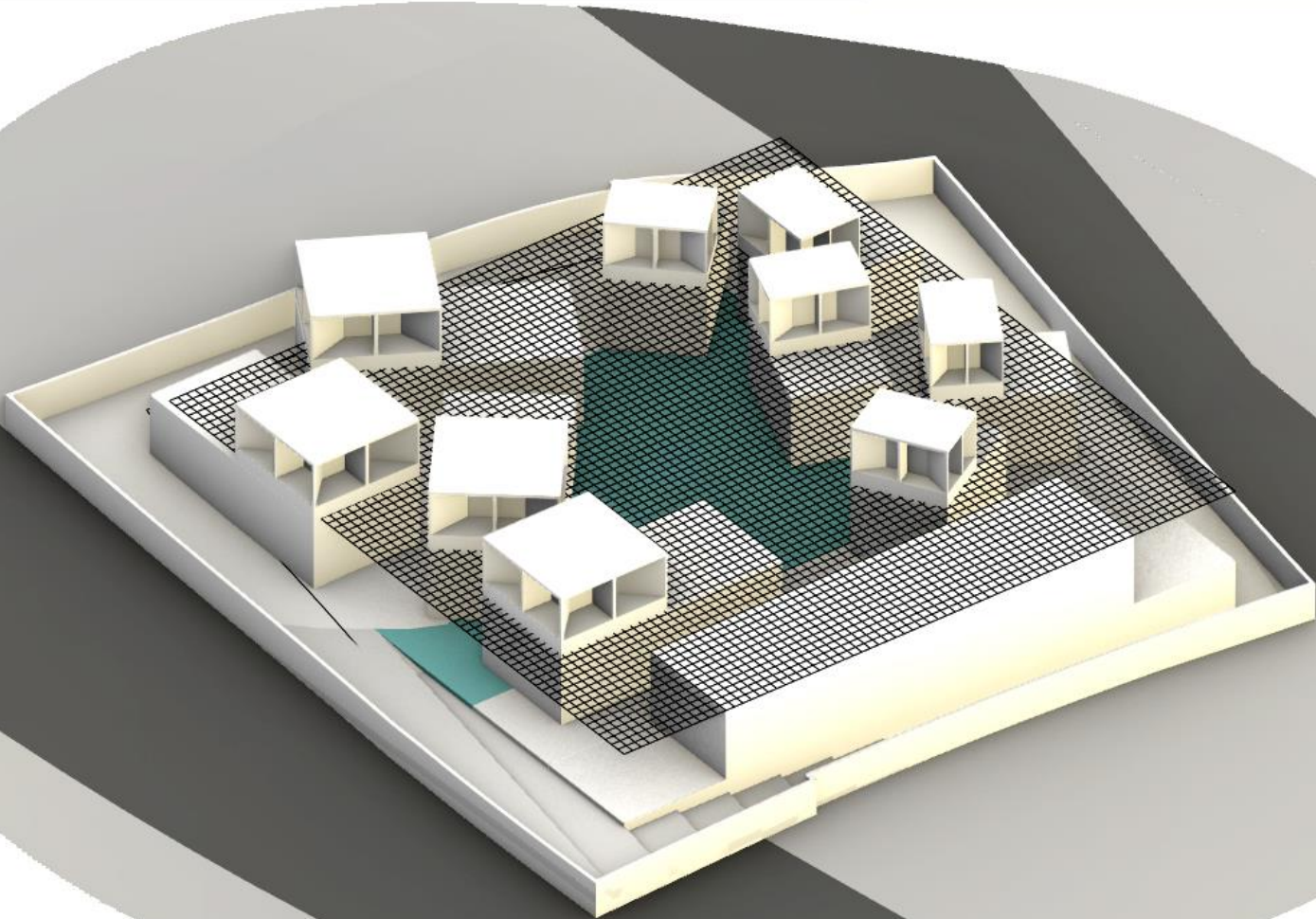
ALT 02

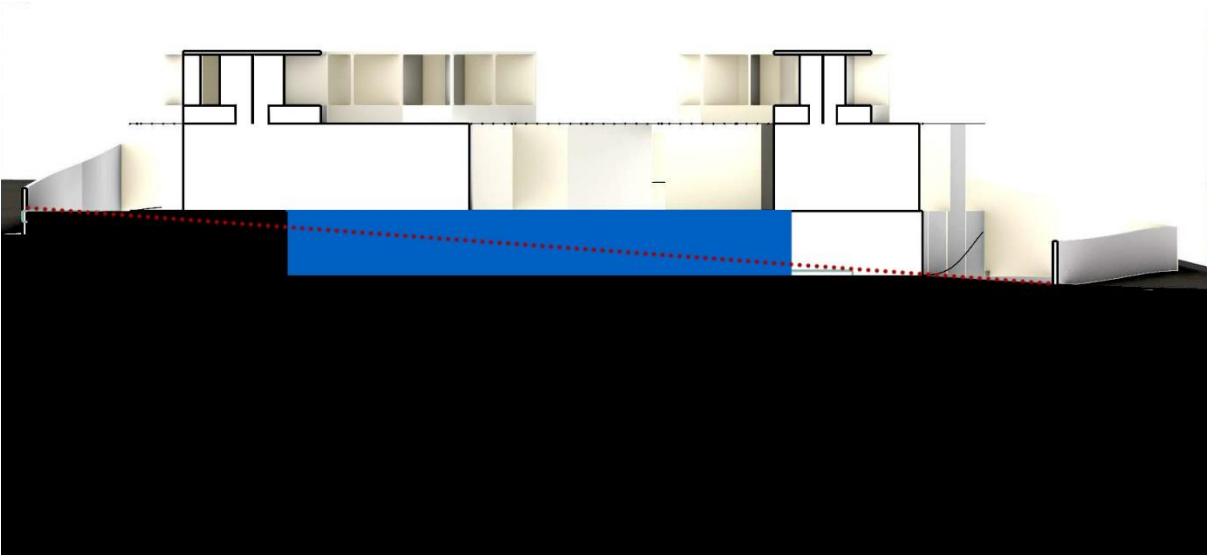
SITE PLAN

ARRANGEMENT







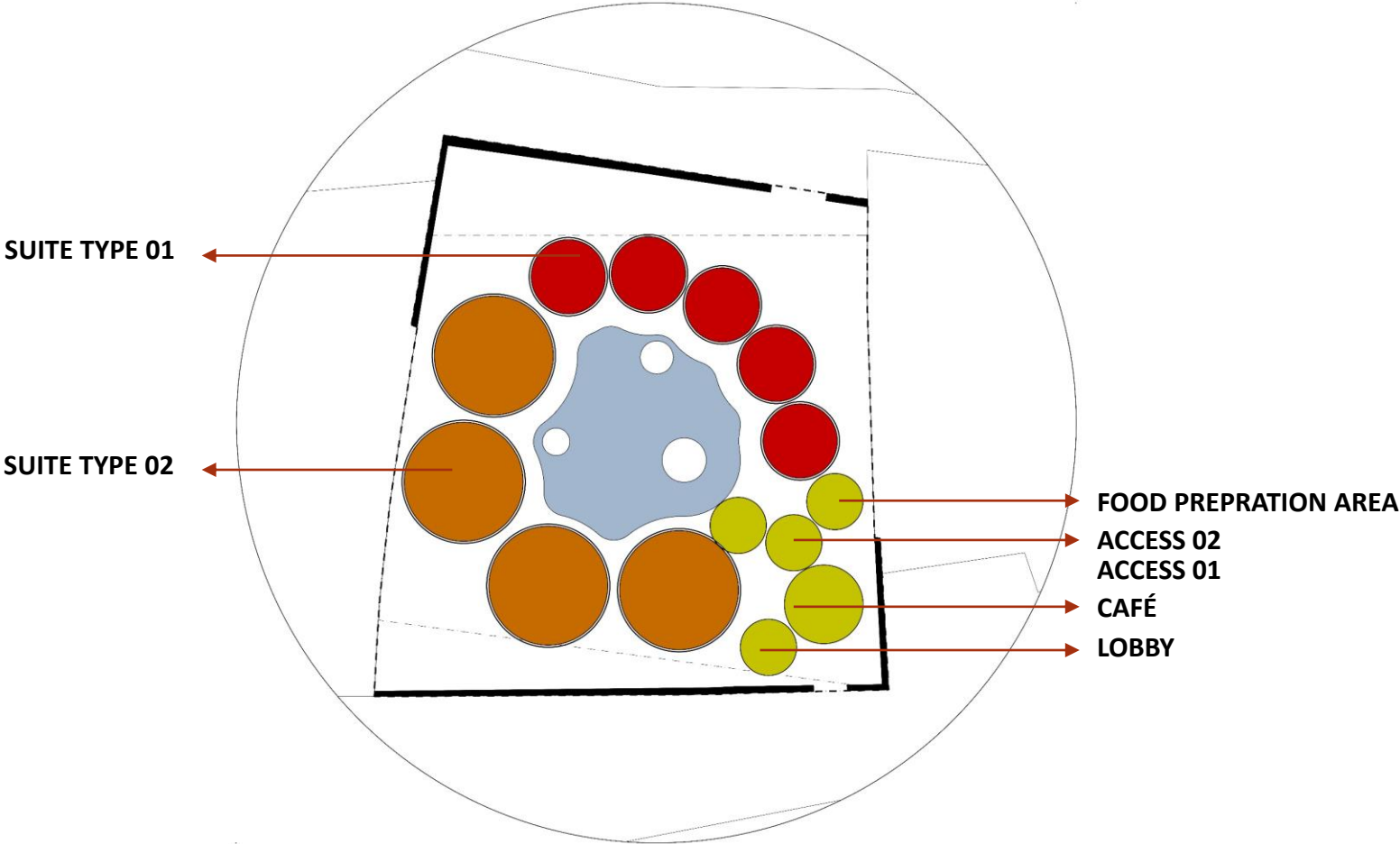


ALT 03

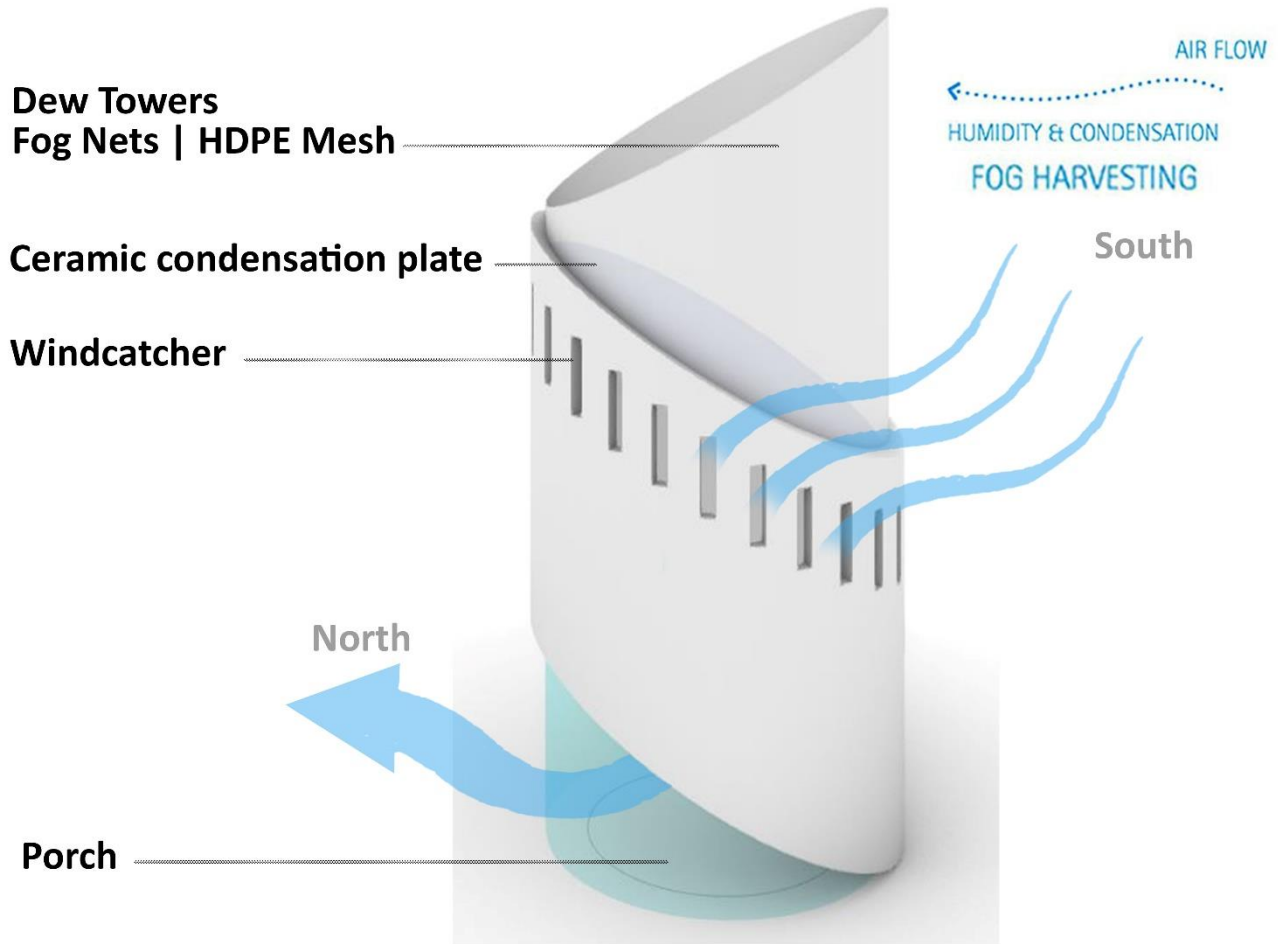
SITE PLAN

ARRANGEMENT

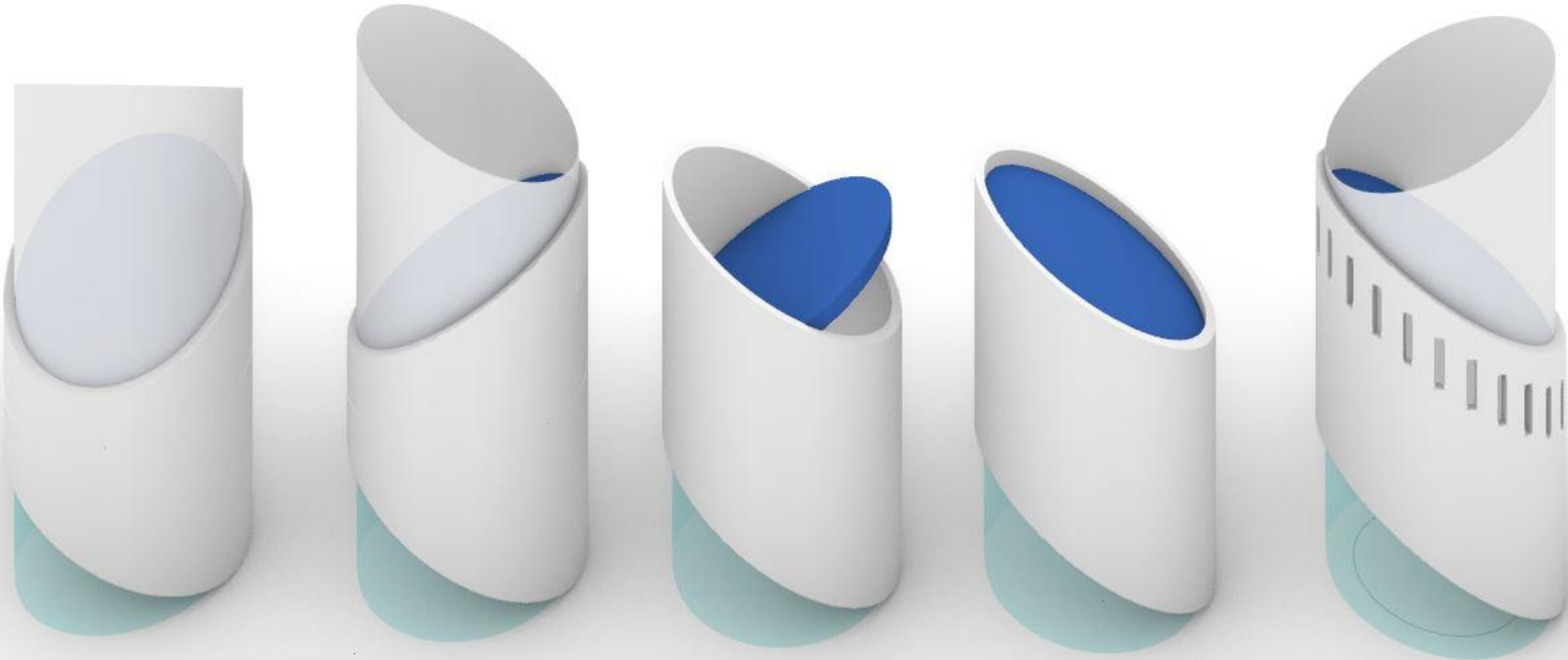




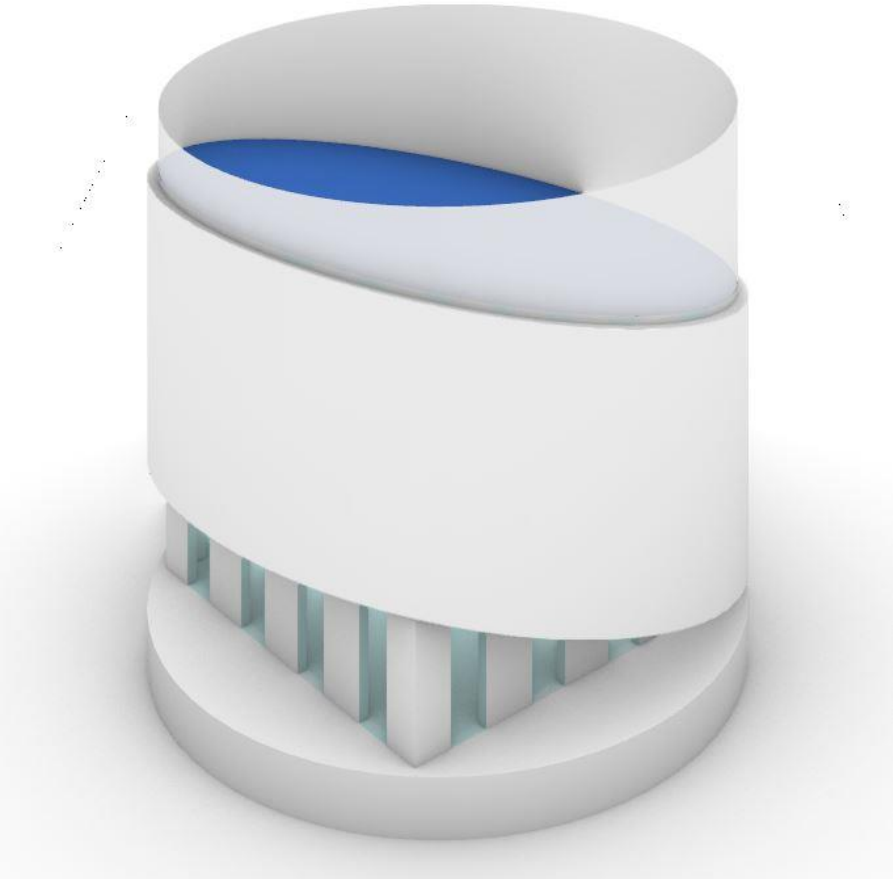
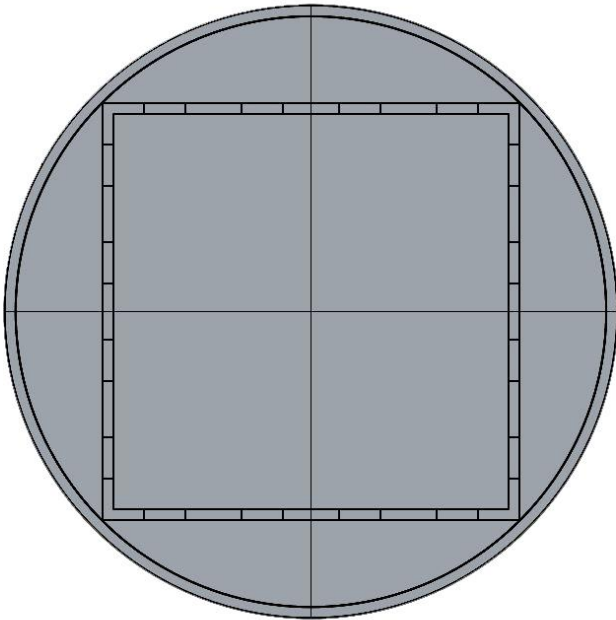
Climate Pixel

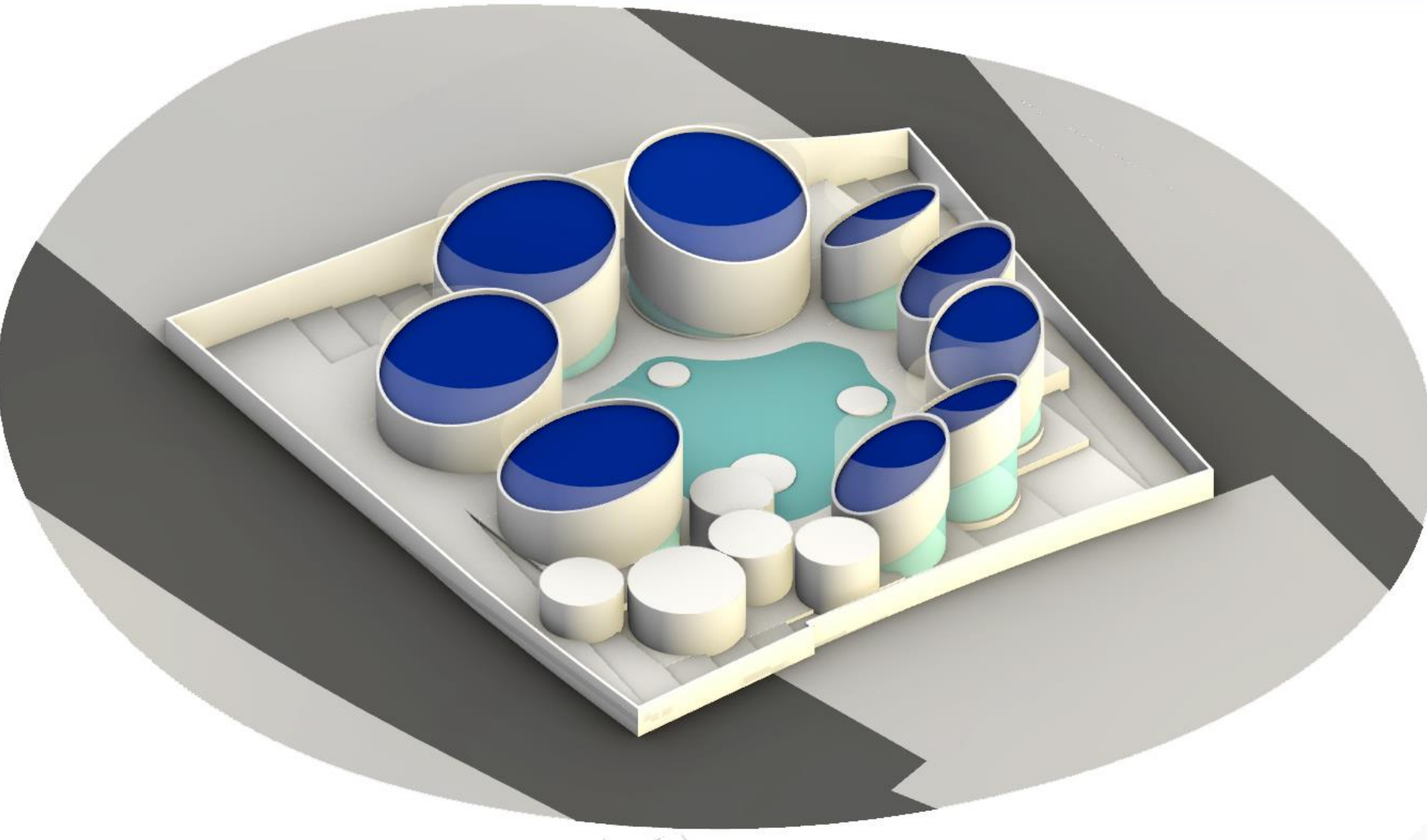


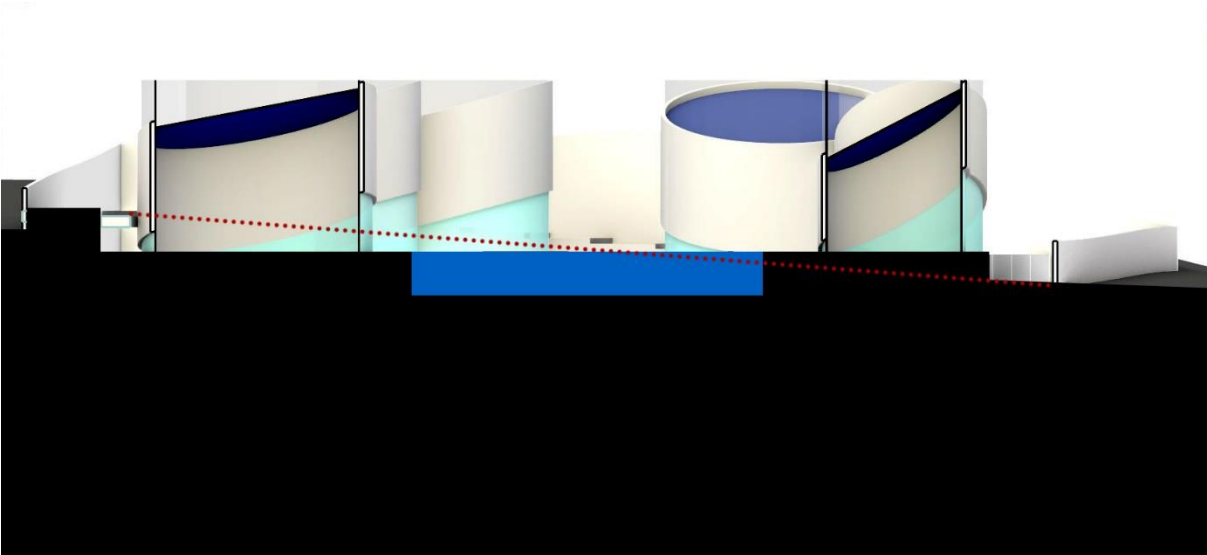
Climate Pixel - FLEXIBILITY

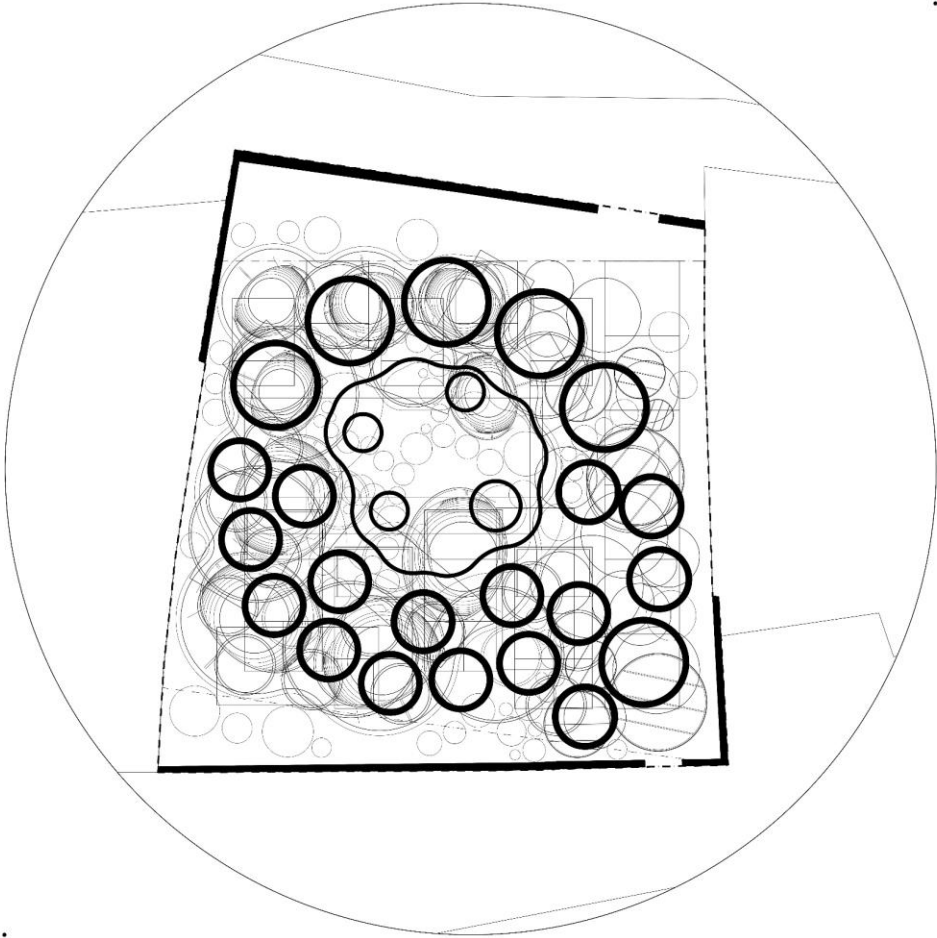


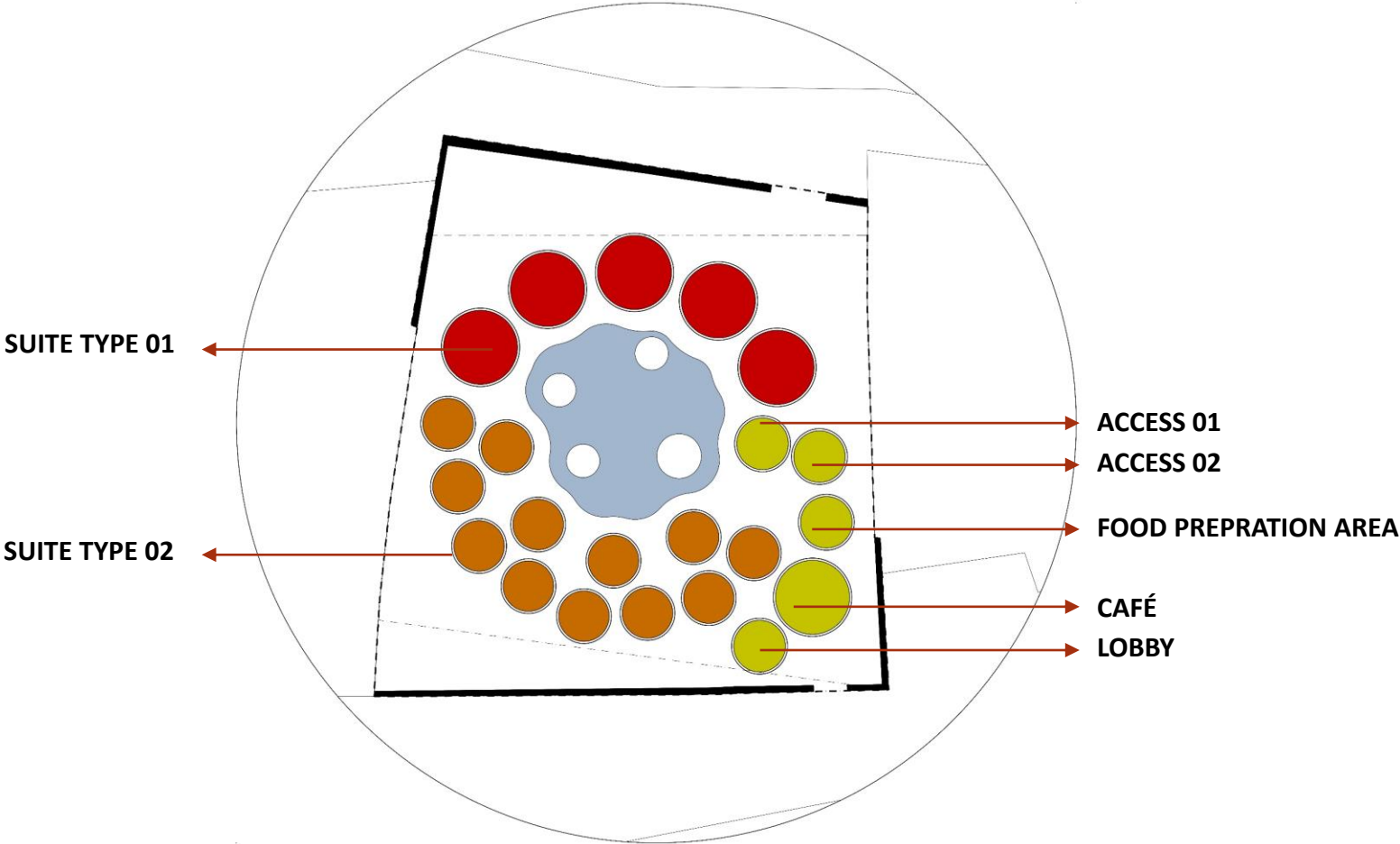
Climate Pixel

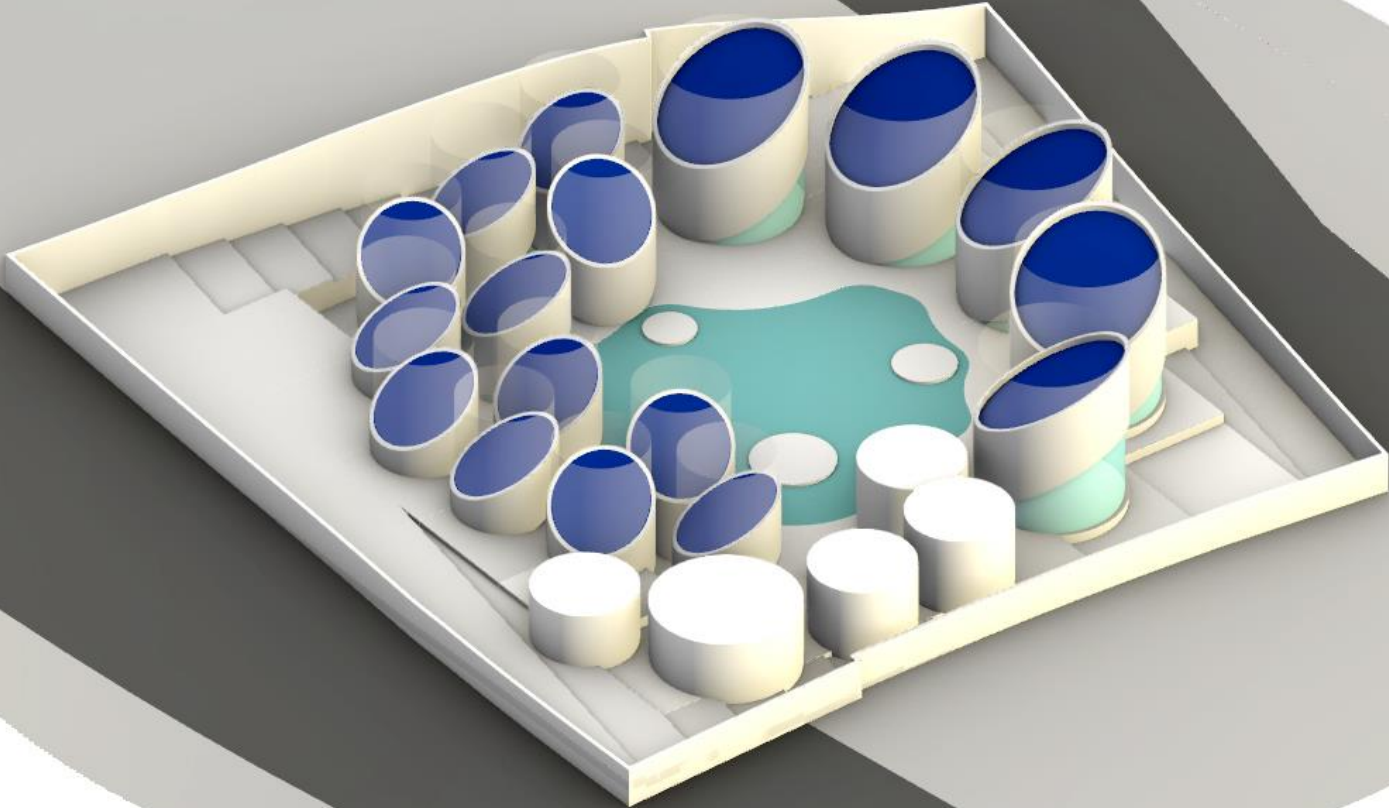


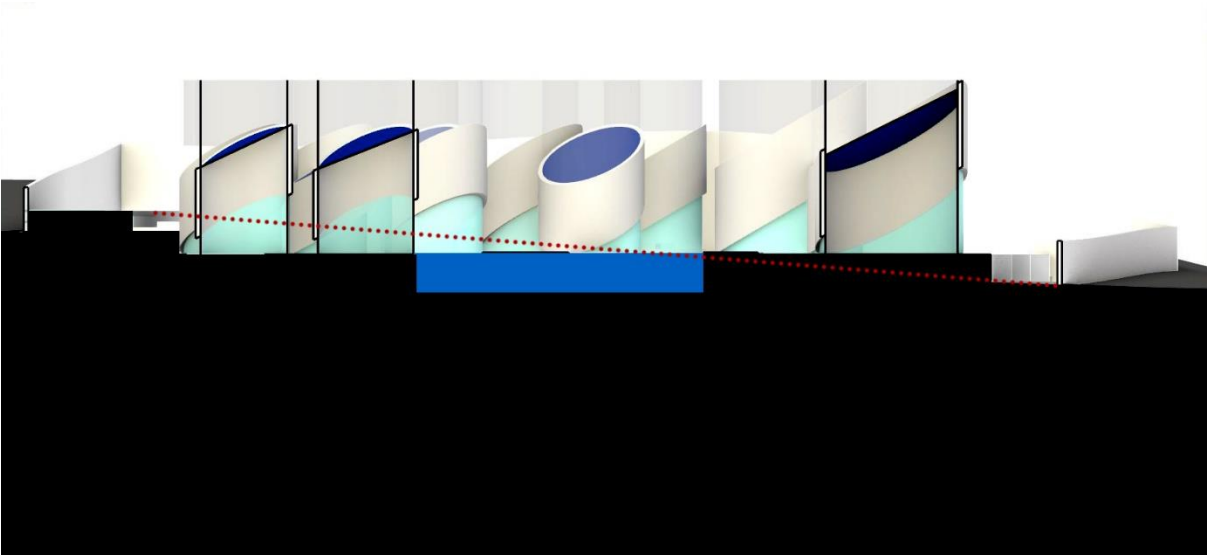




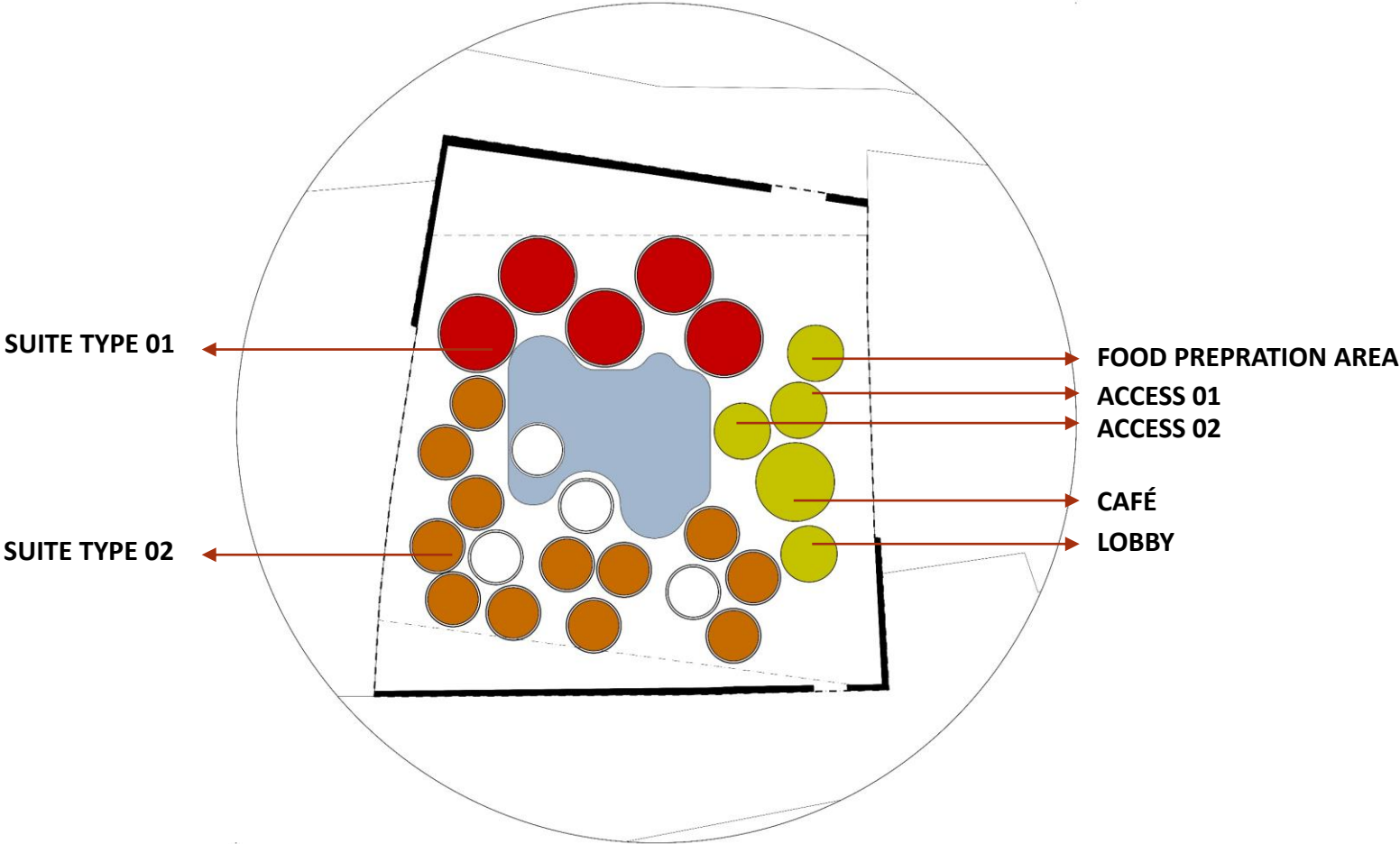


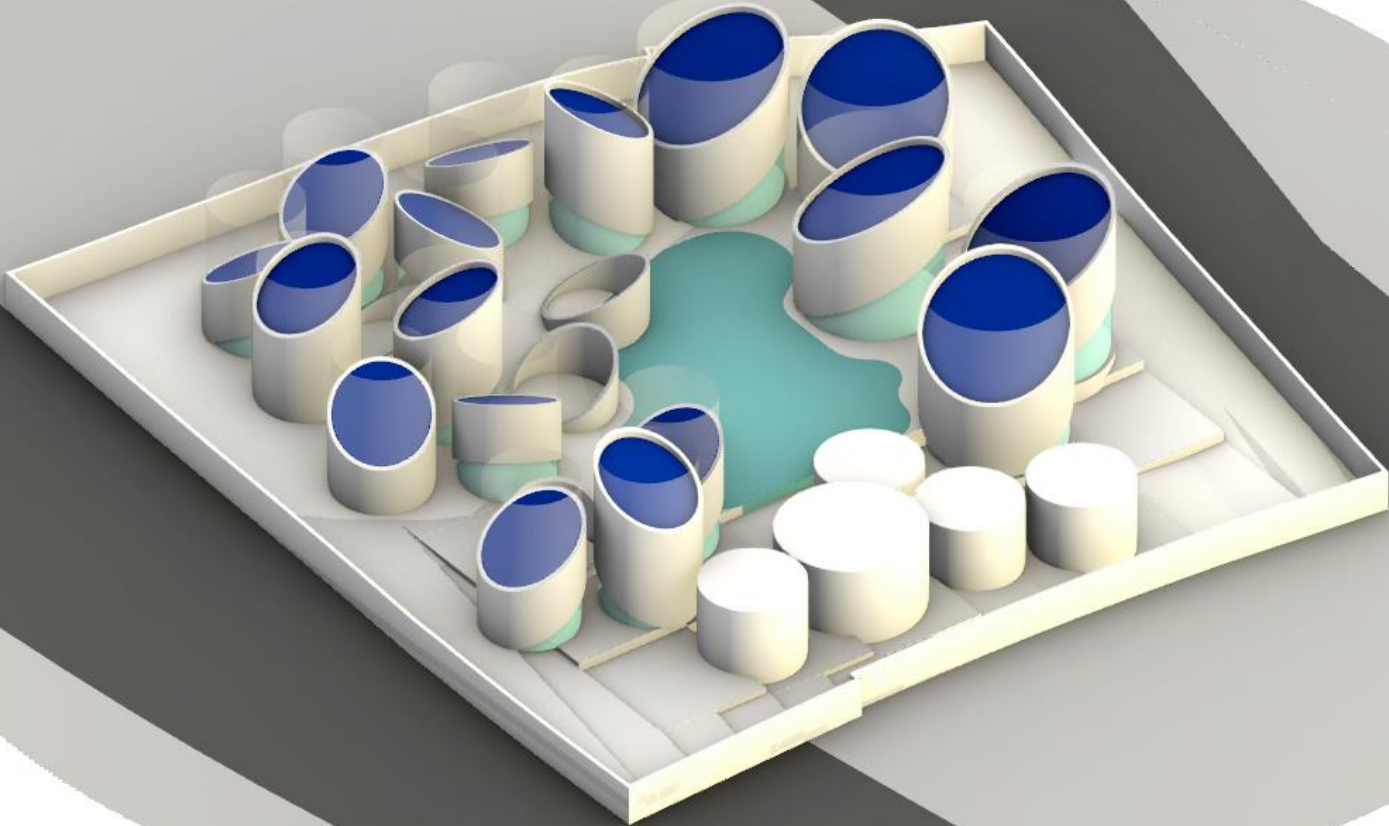


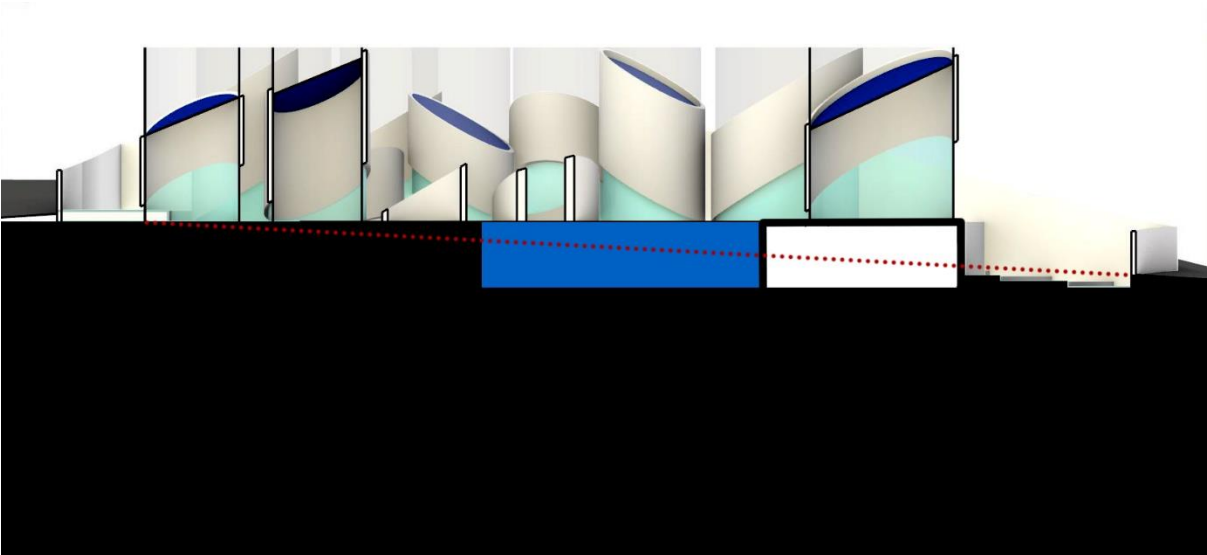








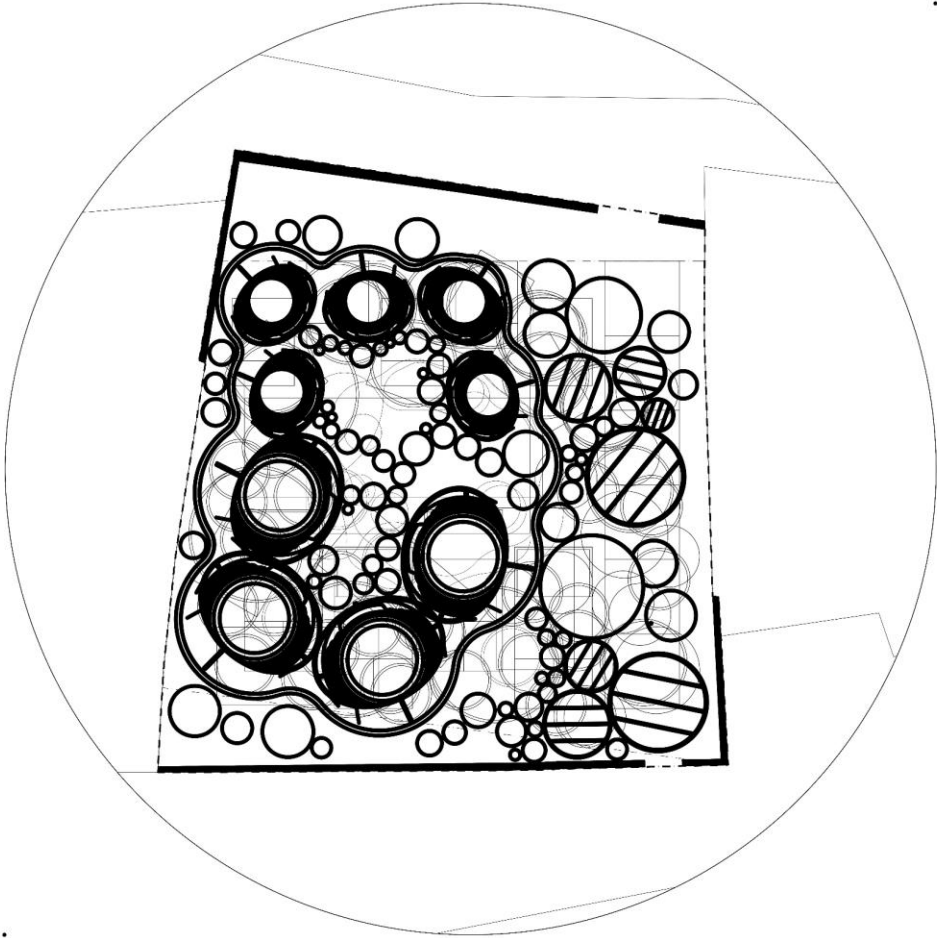


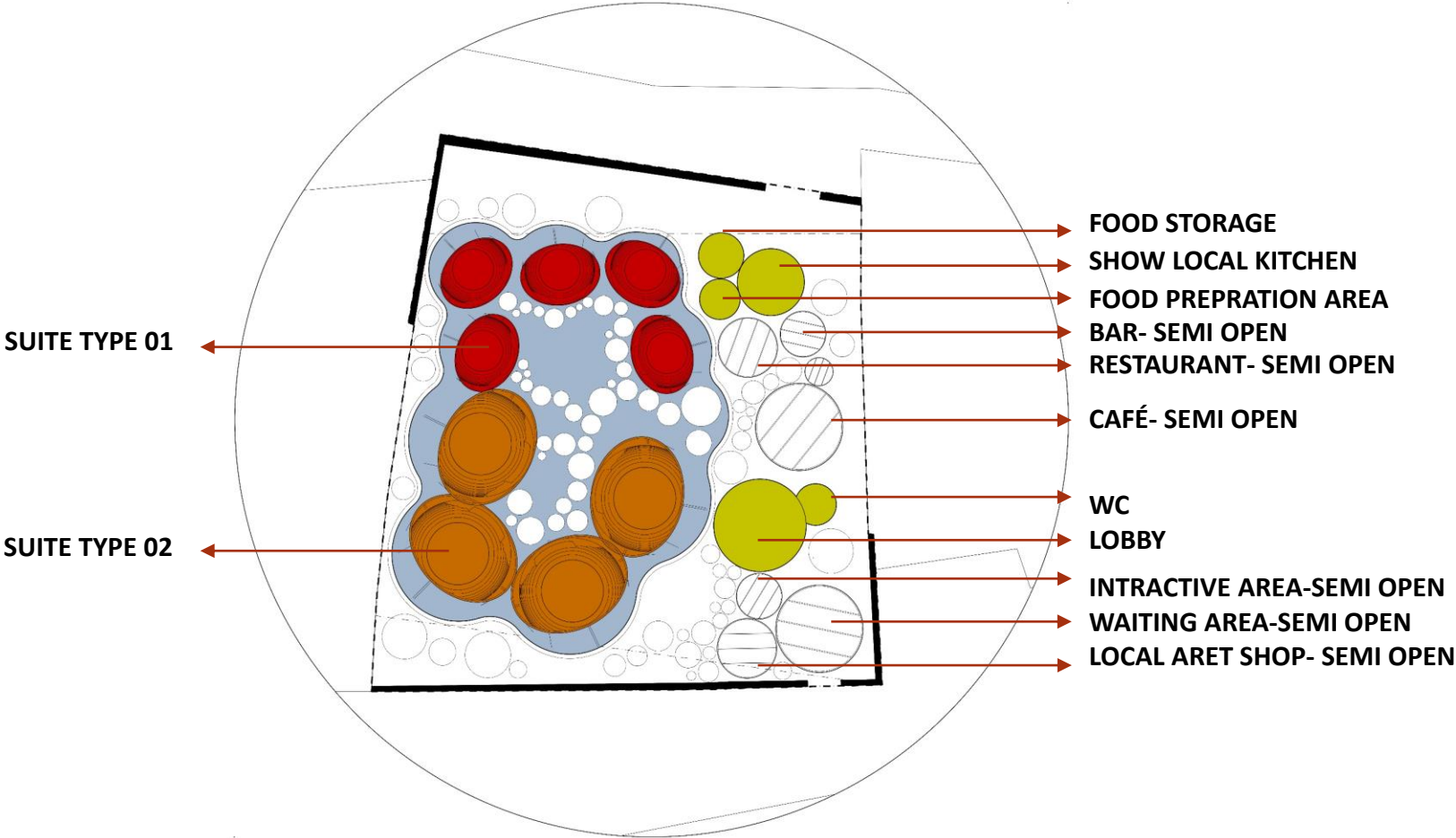


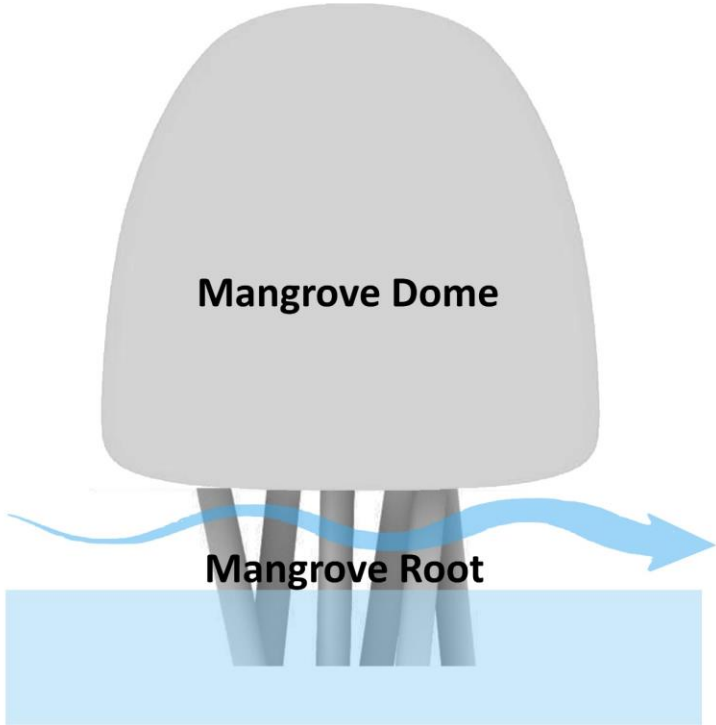
ALT 04

SITE PLAN

ARRANGEMENT







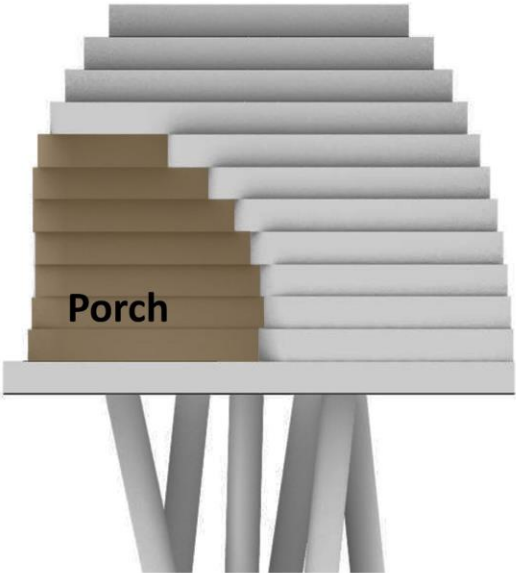


Chahkooh Canyon



Namdan Salt Cave

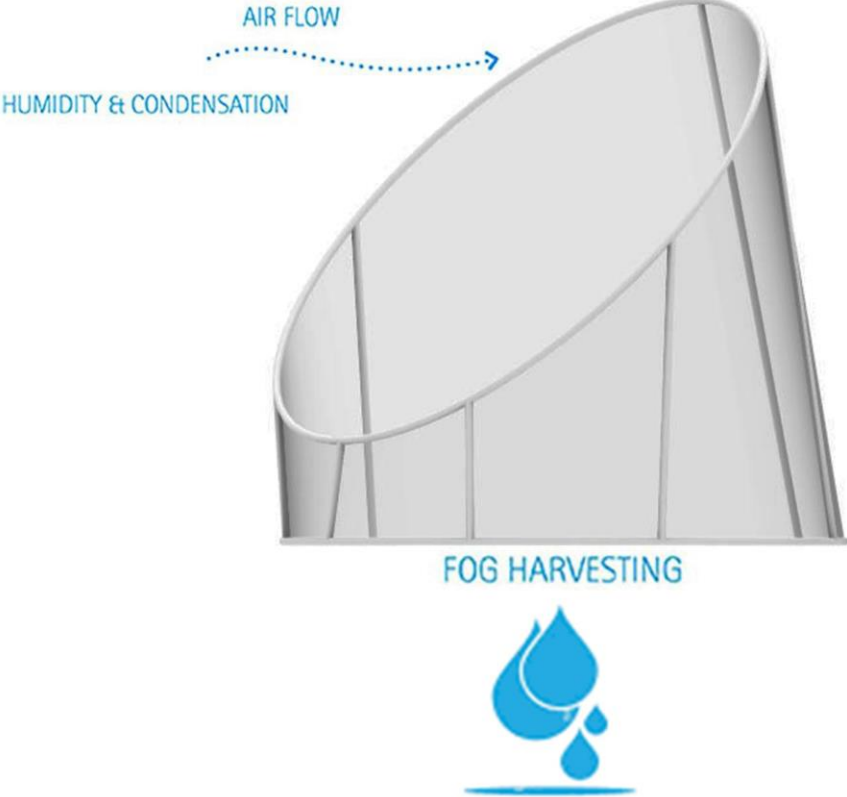
**Sedimentary Stratified
Rock Formations**



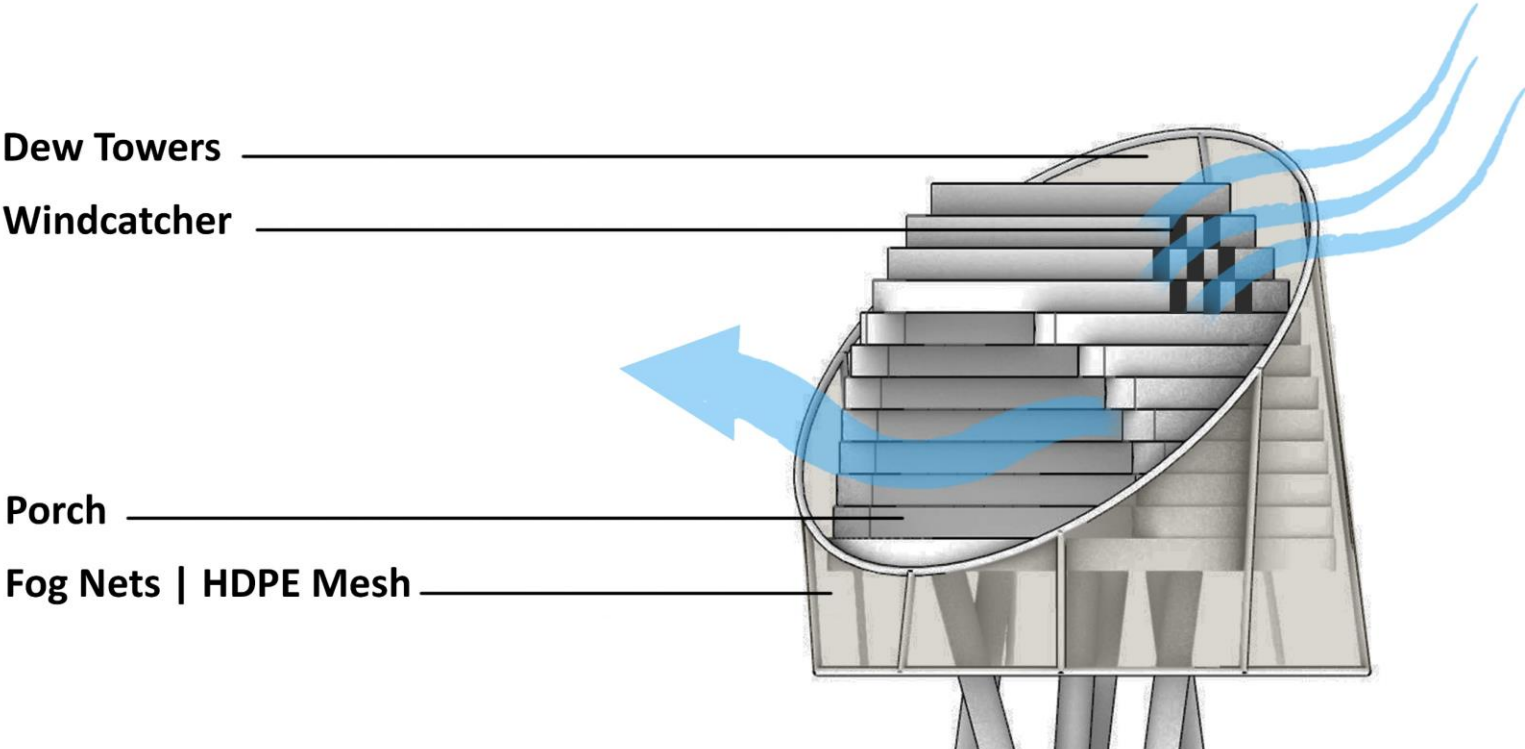


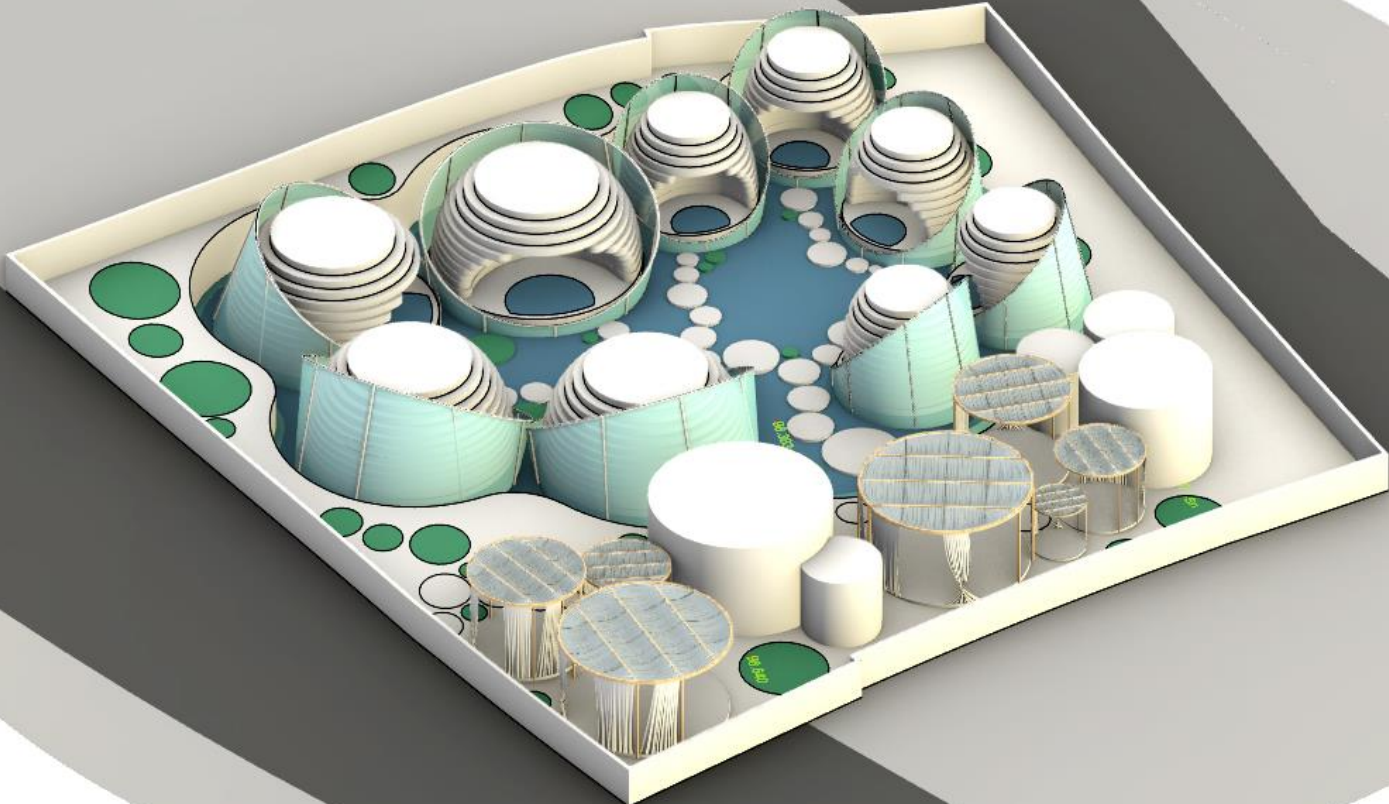


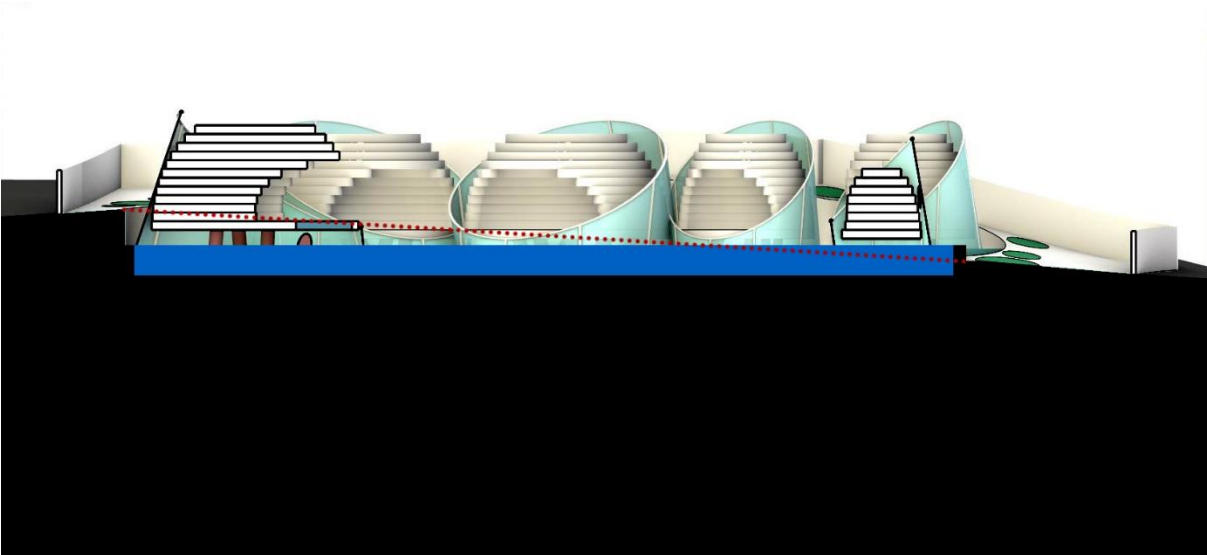
Dew Towers
Fog Nets | HDPE Mesh



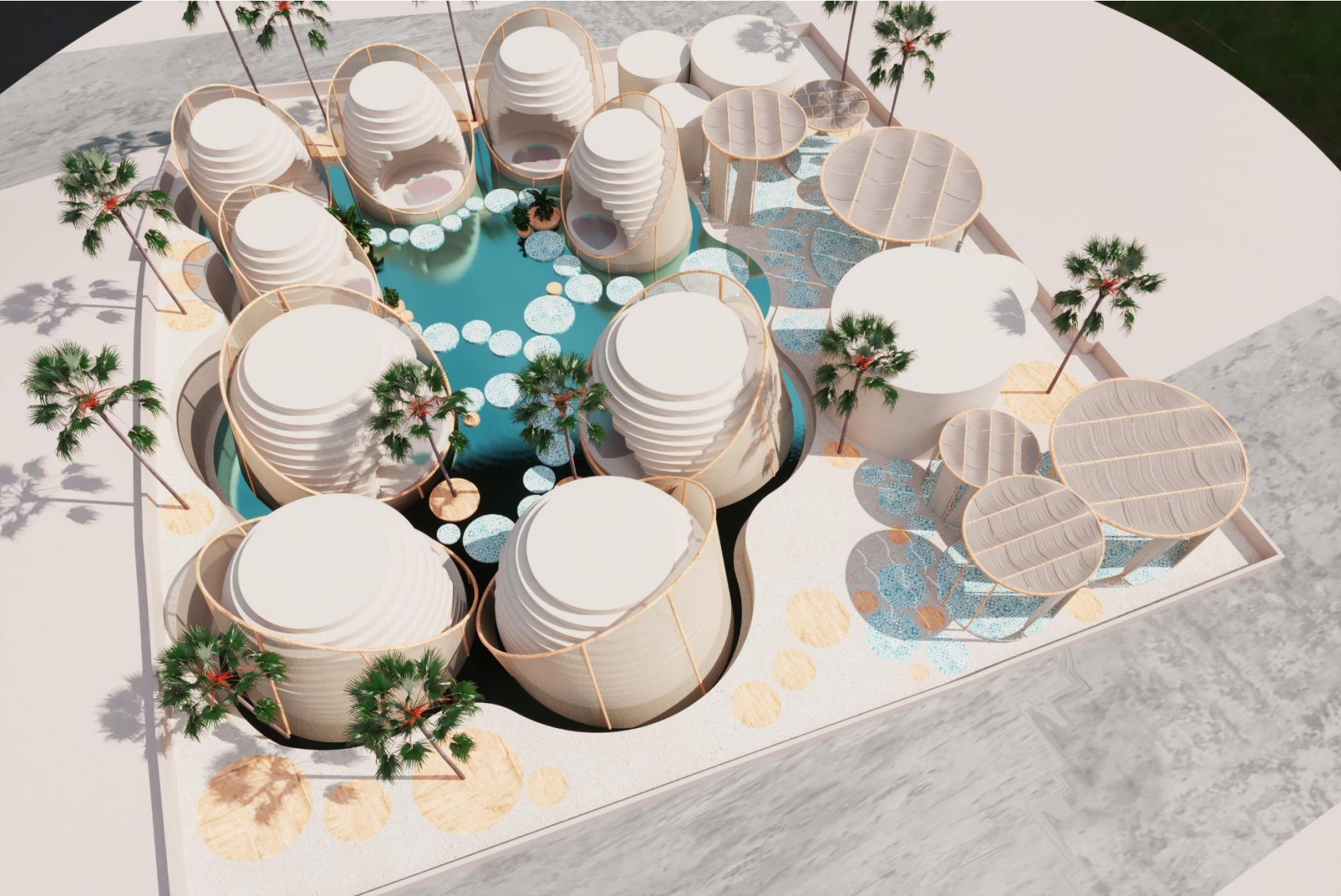
Climate Pixel















NOVEMBER 24 2025



✉ info@foroffice.ir
www foroffice.ir
@for_architecture_office
☎ 09129539959 | 09120120631

FOR
ARCHITECTURE OFFICE

تهران، ونک، ملاصدرا، شیراز شمالی، زاینده رود غربی، مجتمع پارک پرنس