

Q E S H M

B O U T I Q U E

H O T E L

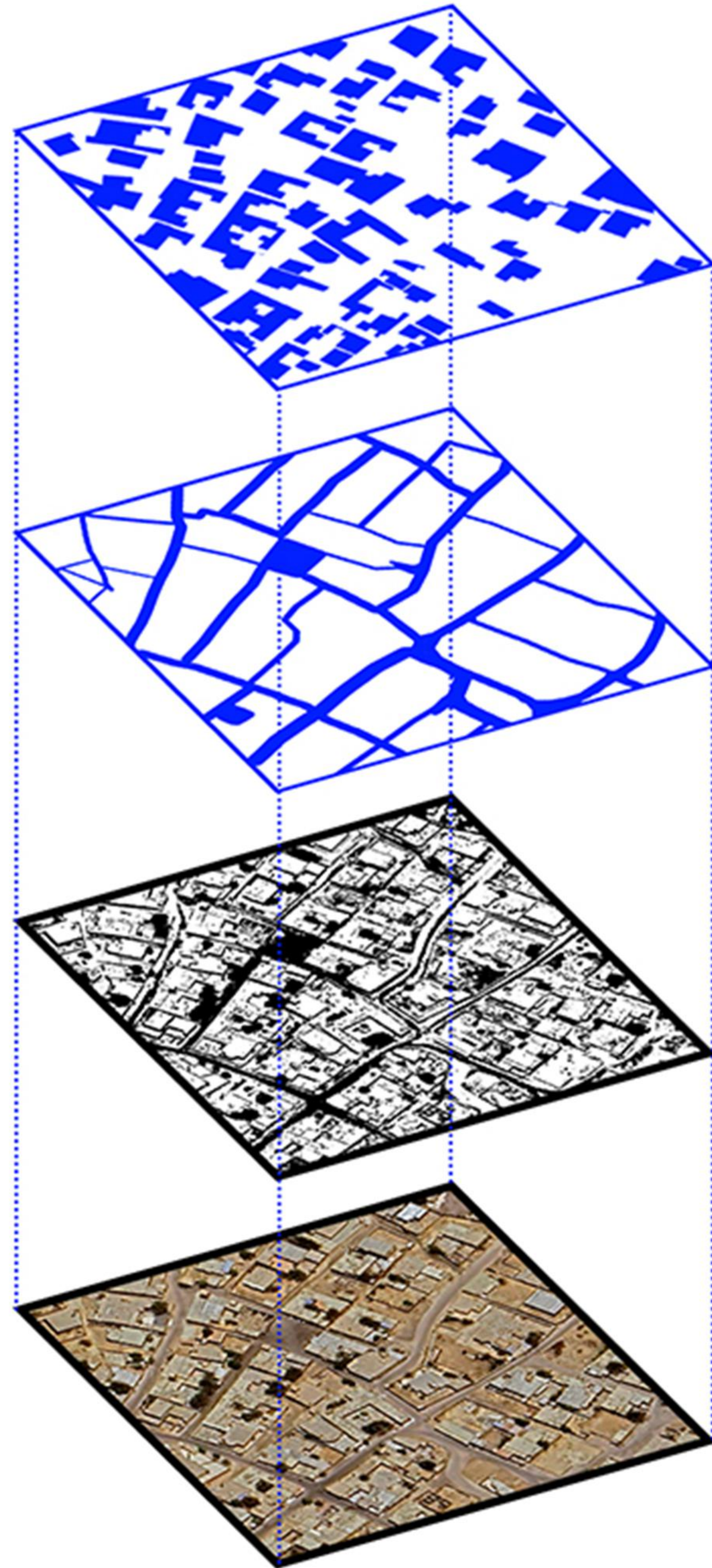
S O H E I L Y - V I L L A G E - Q E S H M - I R A N



آستوديو
معماری
نو

2025

0 1 - D I A G R A M S



04-MASS

The masses are placed side by side without any particular order and all with appropriate orientation. The high density with narrow open spaces between the masses provides both shade and ventilation.

03-ACCESSES

The organic and interwoven arteries create an irregular structure. The narrow section of the alleys helps to improve environmental conditions by providing shade, and the many nooks and crannies make each route particularly familiar to its residents.

02-MASS-SPACE

If we, as architects, pay attention to the texture of the mass and space in this structure, we will find some points worth considering.

01-LAFT PORT

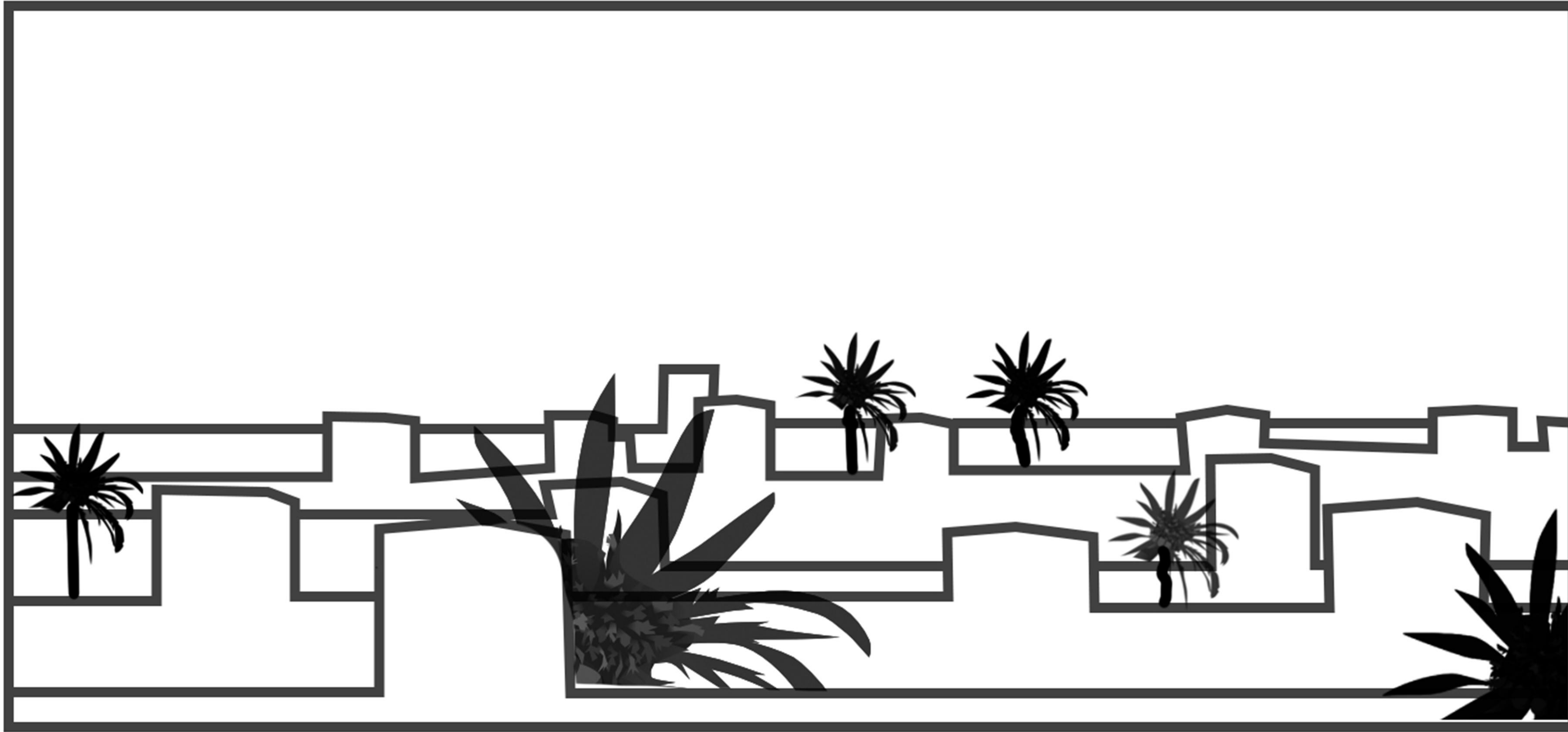
The urban fabric in Bandar Laft is like a genome that has been refined through trial and error over the years and has reached the best results in terms of mass and space structure.





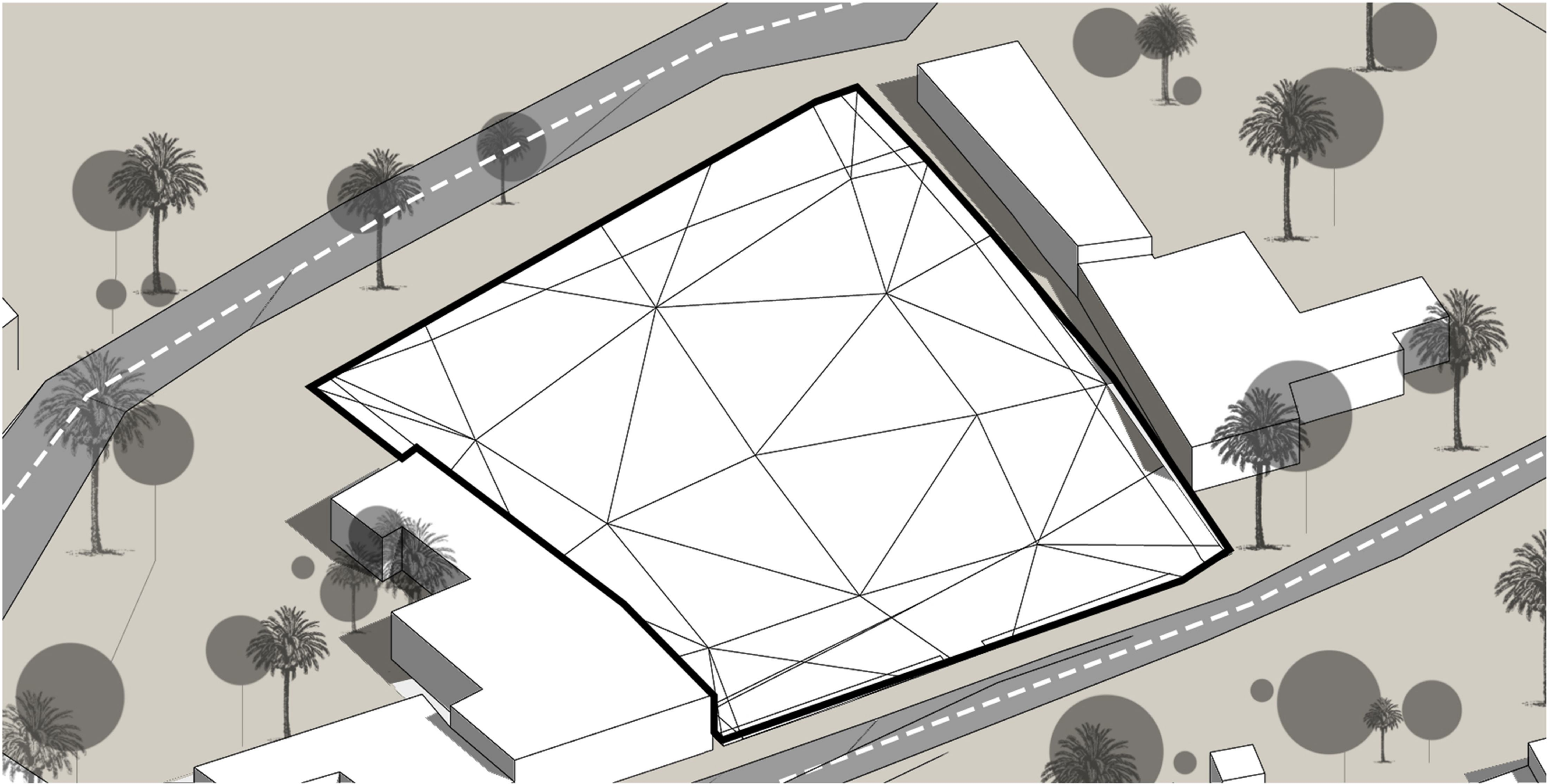
QESHM ISLAND

The island's indigenous architectural form features one- or two-story buildings alongside old ports. The horizon is the end of the sea, and vertical elements such as palm trees and traditional windbreaks stretch skyward.

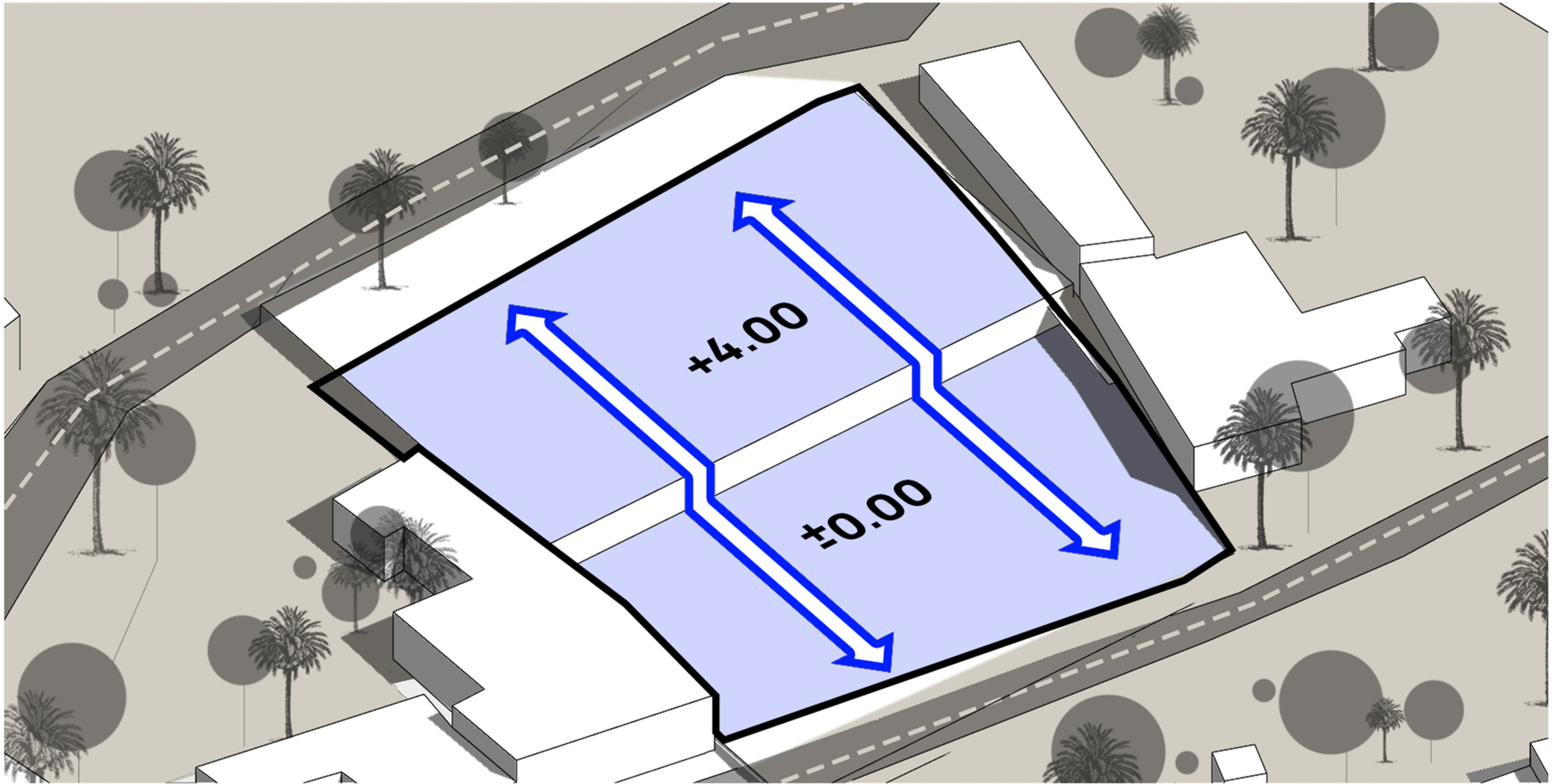


SKYLINE

Unlike cities where buildings have grown more vertically, the southern ports are characterized by their horizontal orientation. One of the features that creates a sense of calm in these areas is the wide open field of view to the sky. However, this line is periodically broken up by windbreaks and is eye-catching.

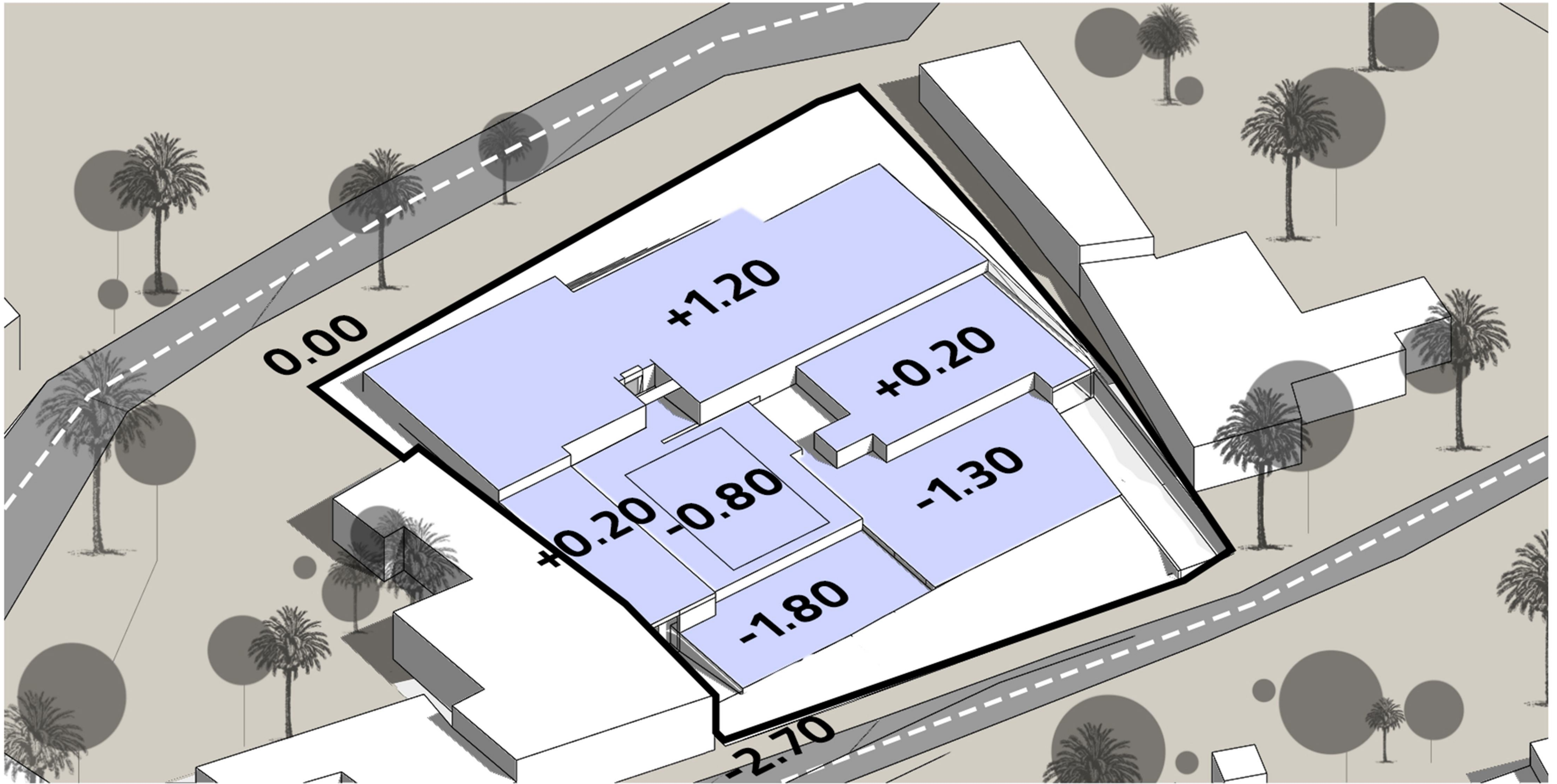


SITE ISOMETRIC



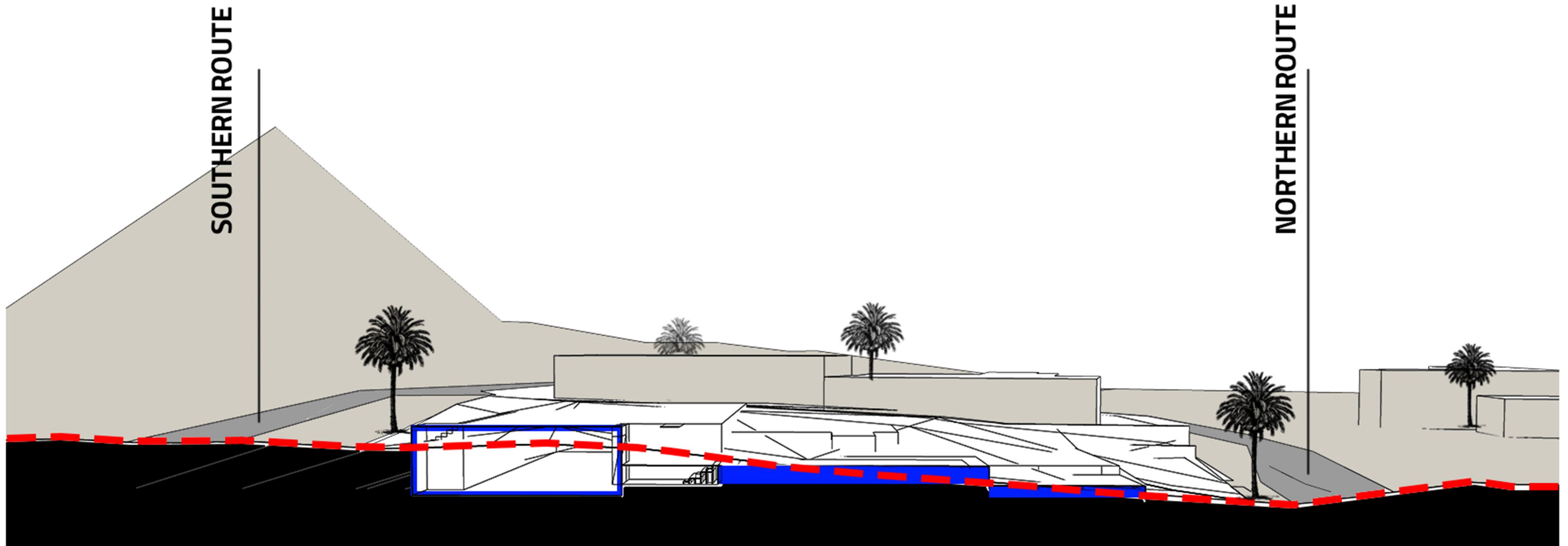
USUAL DIVISION

THE USUAL DIVISION OF THE LAND AND THE DIVISION OF THE LEVELS INTO TWO LEVELS, GROUND FLOOR AND FIRST FLOOR, IS AN INITIAL SOLUTION THAT CONTRADICTS THE NATURAL BEDROCK OF STABILITY.



OUR DIVISION

CONSIDERING THE PLAN AND NATURAL SLOPE OF THE LAND, WE DIVIDED IT INTO SEVERAL MAIN SECTIONS SO THAT IT WOULD BE LEVEL WITH THE PROJECT LAND.



CROSS SECTION



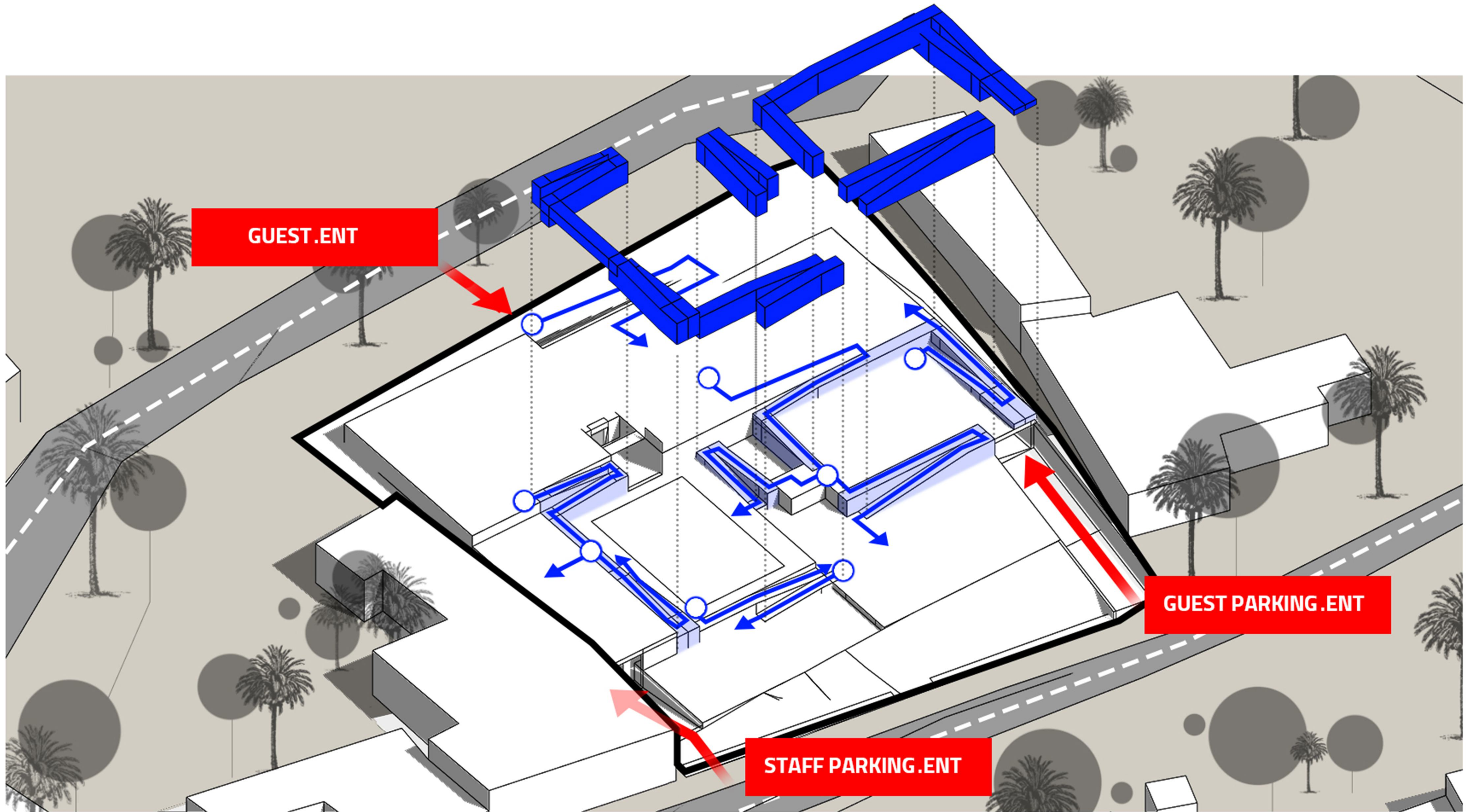
TOPOGRAPHY



ARCHITECTURE PLATFORM

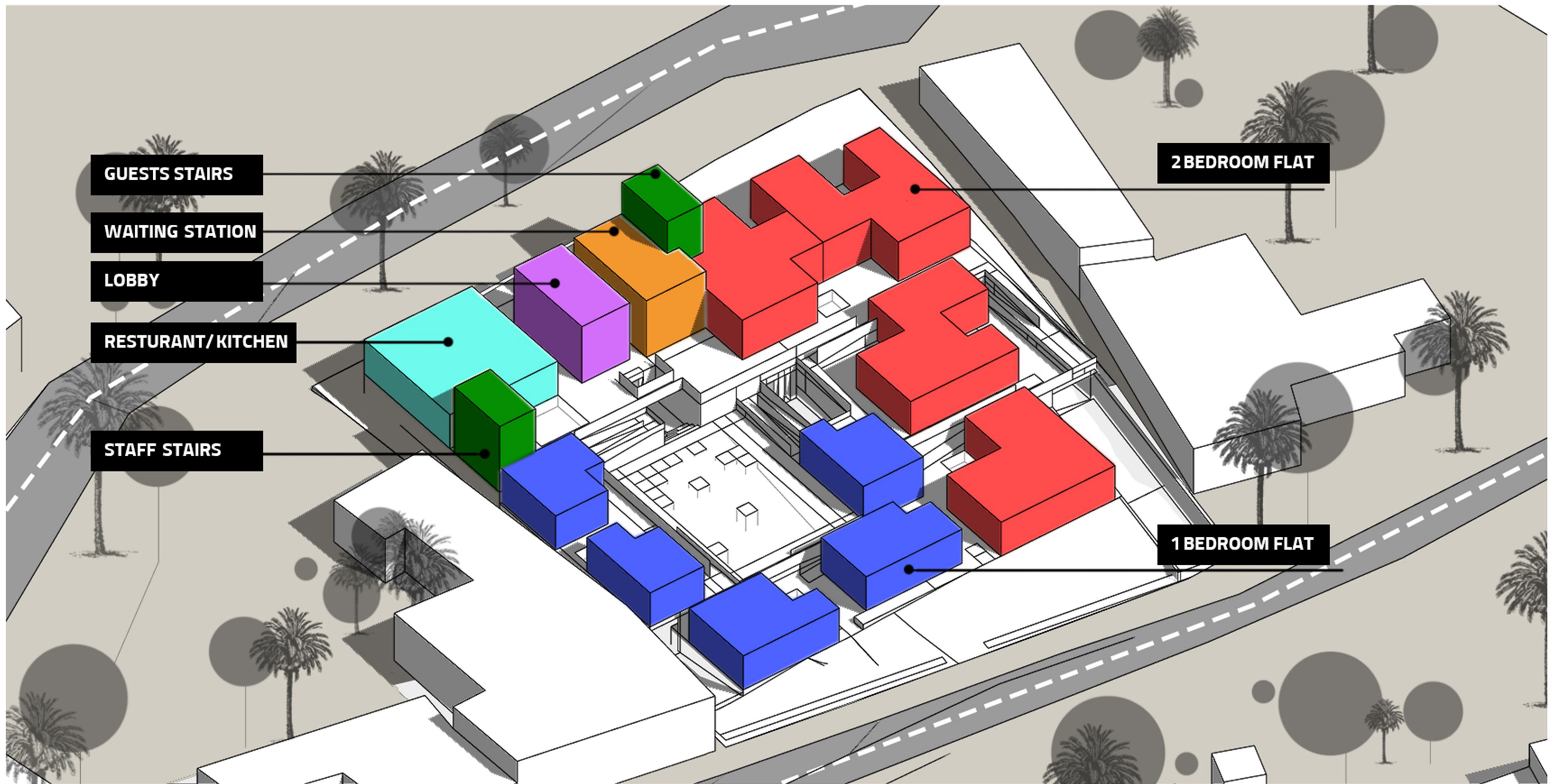
ALIGNMENT

IT WAS VERY IMPORTANT TO US THAT THE CREATED LEVELS WERE AS CLOSE AS POSSIBLE TO THE TOPOGRAPHY. THIS WOULD DIVERSIFY THE PROJECT'S SKYLINE AND GREATLY REDUCE THE COST OF EARTHWORKS AND EXCAVATION.



ACCESSES

GIVEN THE PROJECT'S REQUIREMENT TO RESOLVE DIFFERENT LEVELS USING RAMPS, THE IMAGE ABOVE SHOWS THE MAIN ACCESSES BETWEEN LEVELS.



LOCATING

02-MATCHING-WITH-CONTEXT









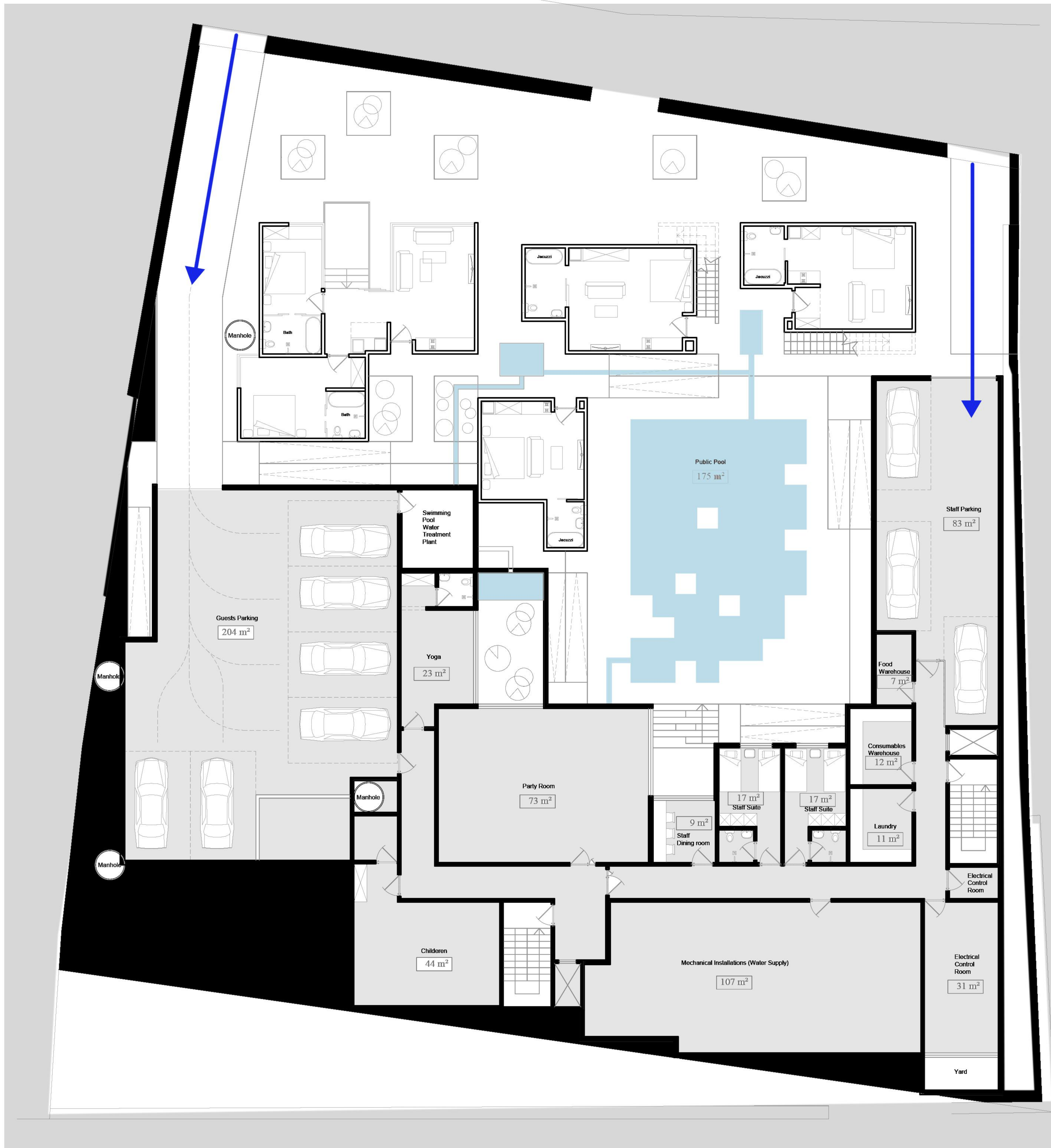




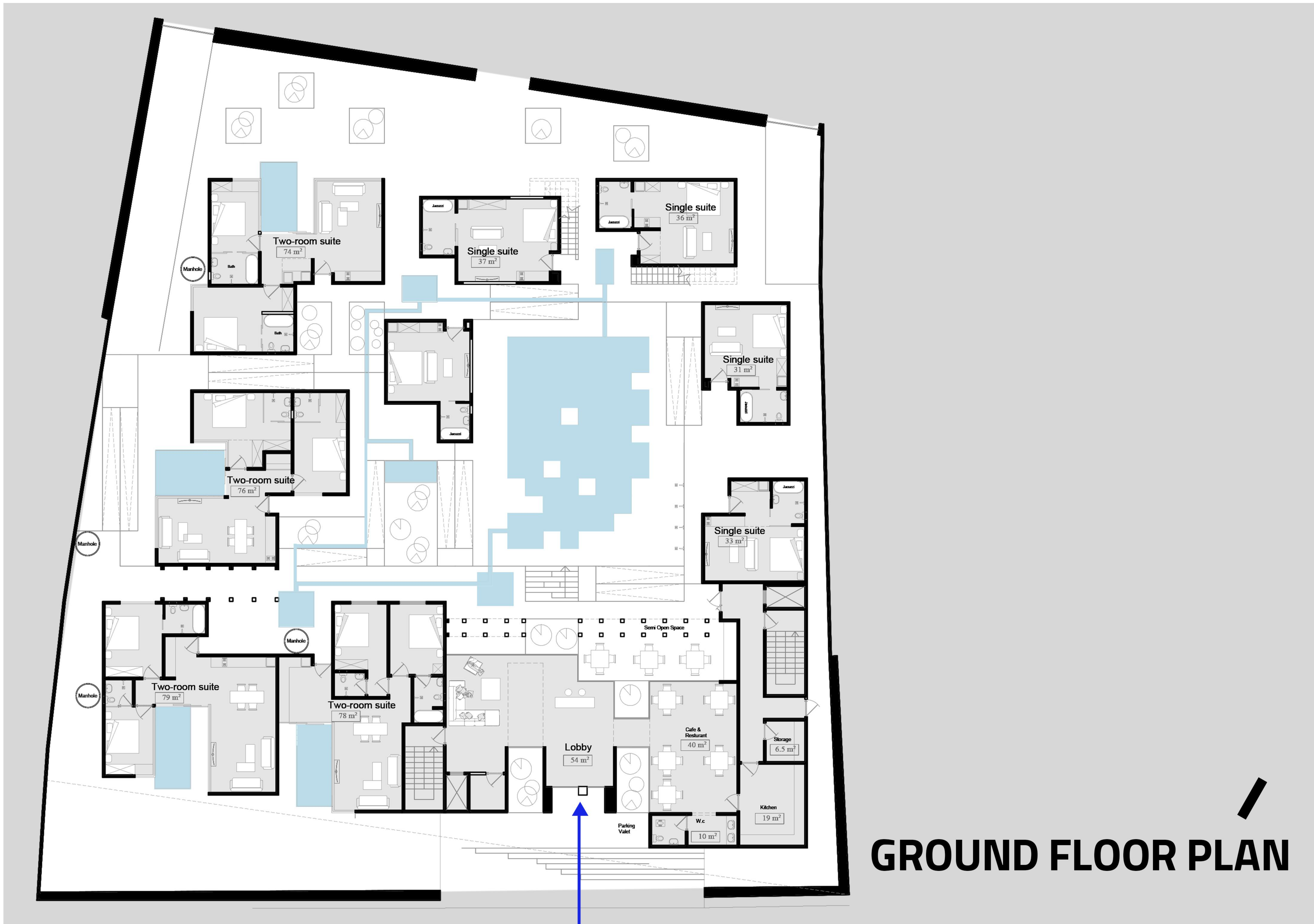




0 3 - P L A N N I N G

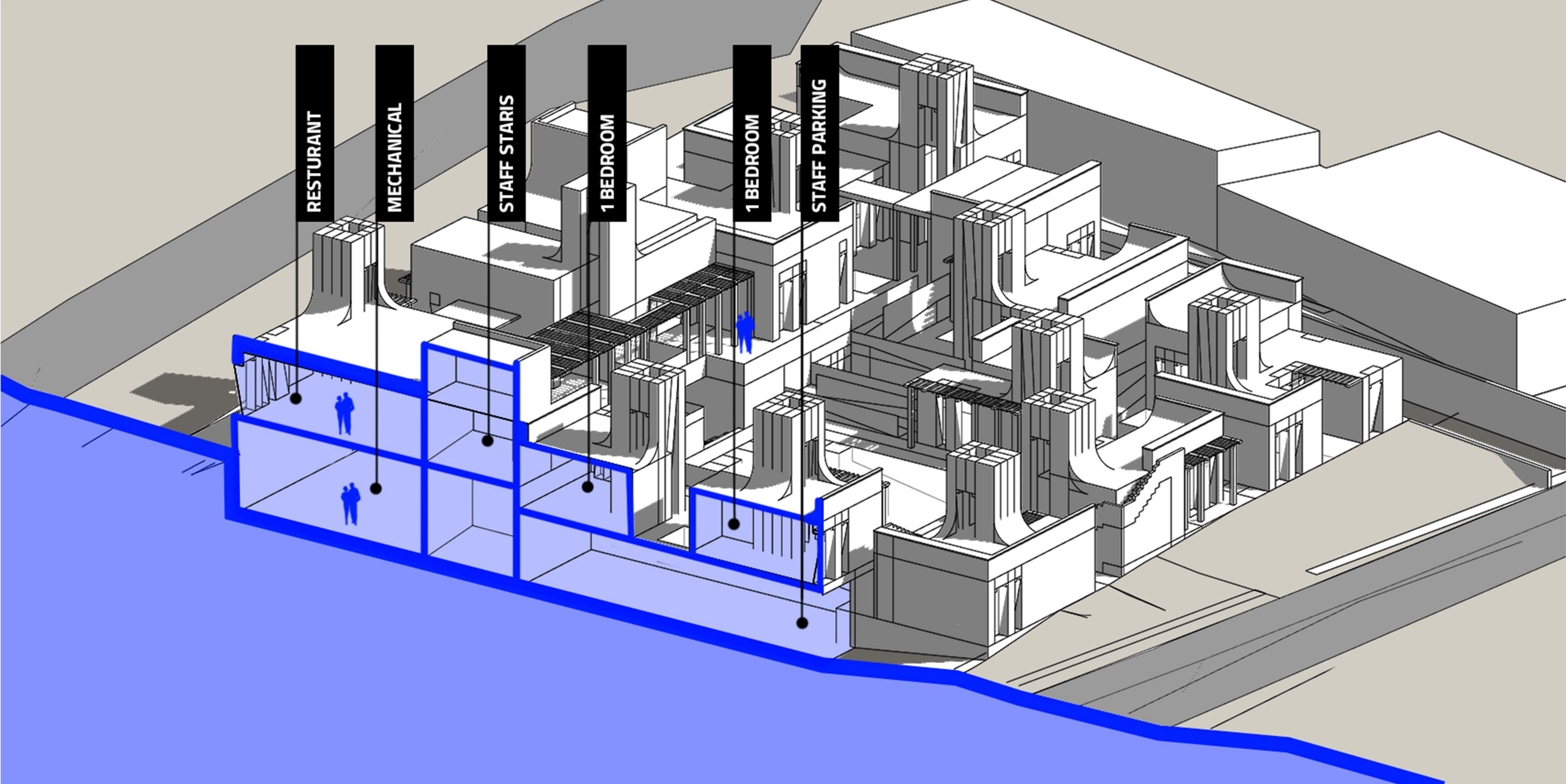


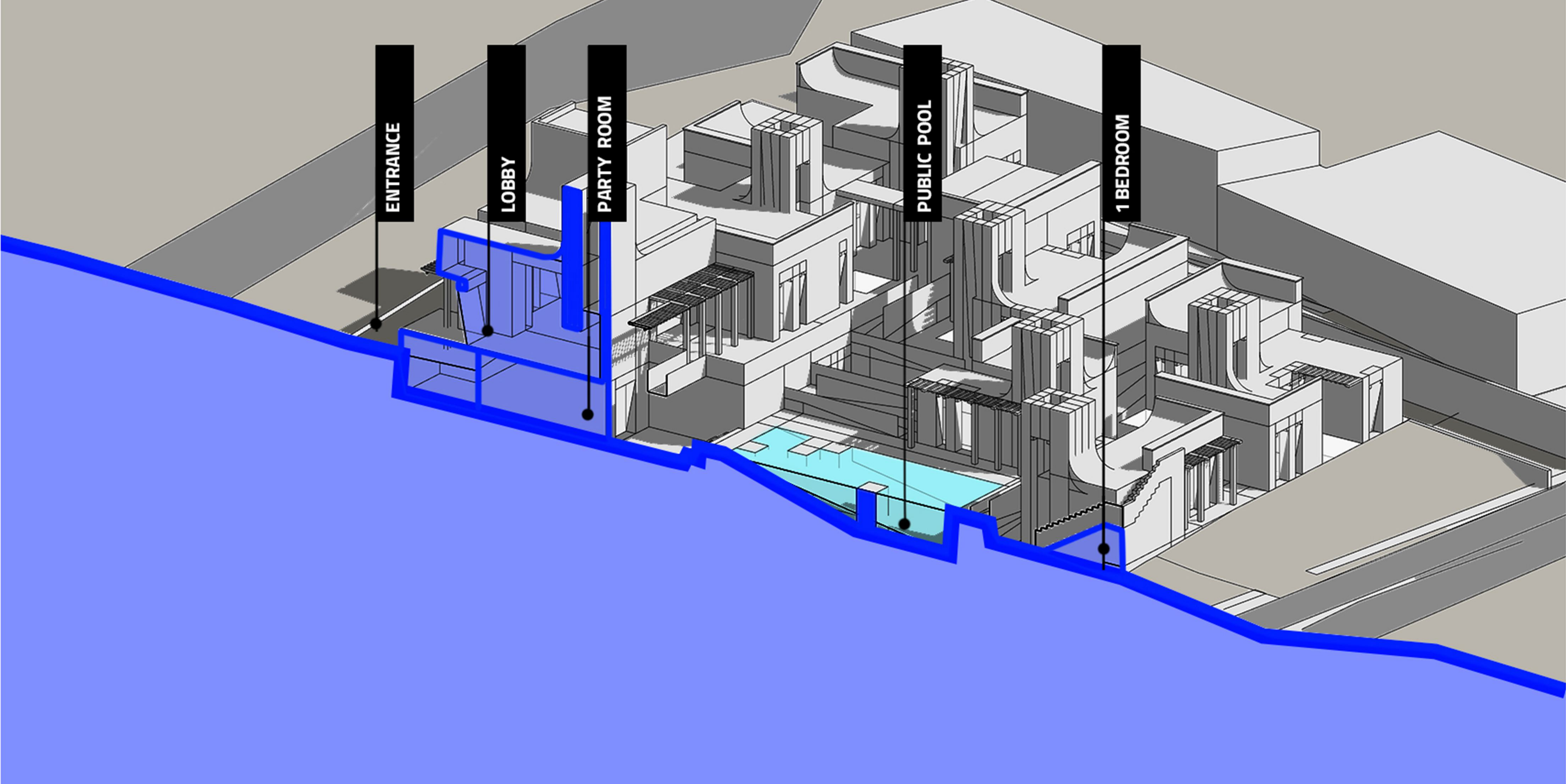
BASEMENT PLAN



GROUND FLOOR PLAN

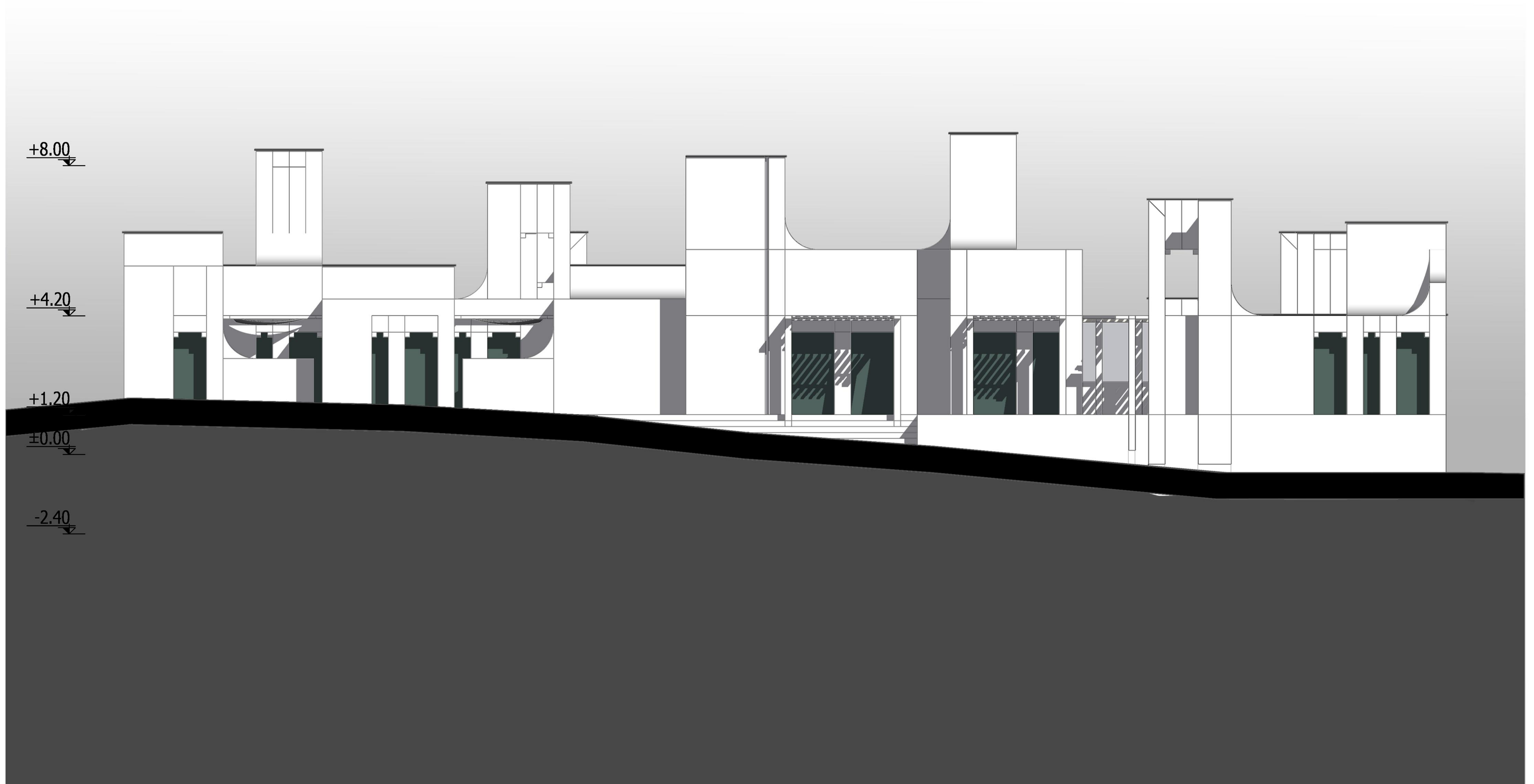
0 4 - 2 D - D O C U M E N T S



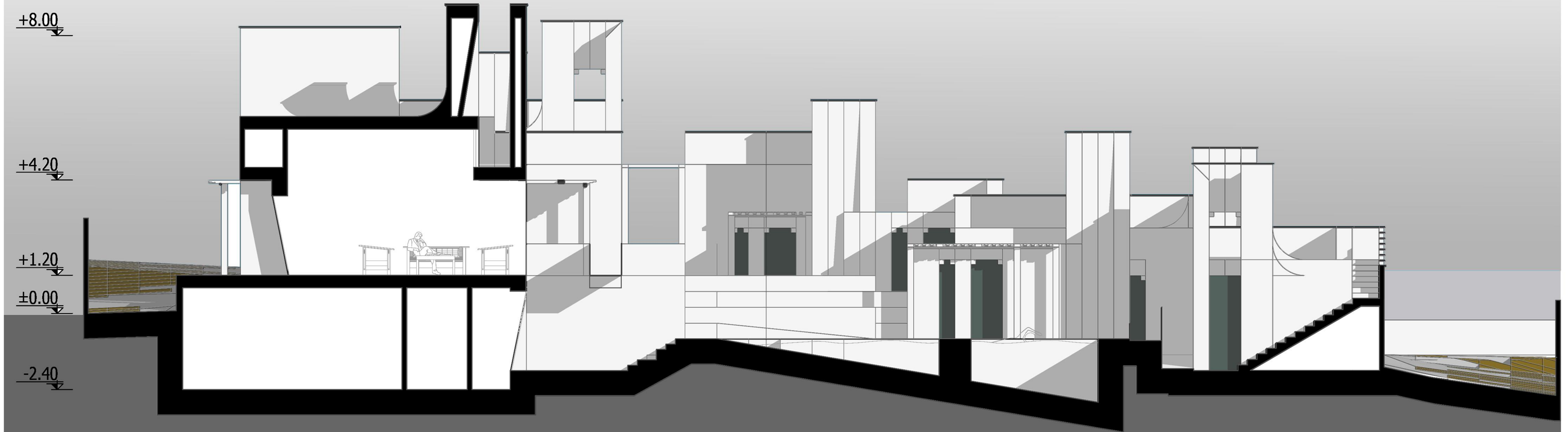


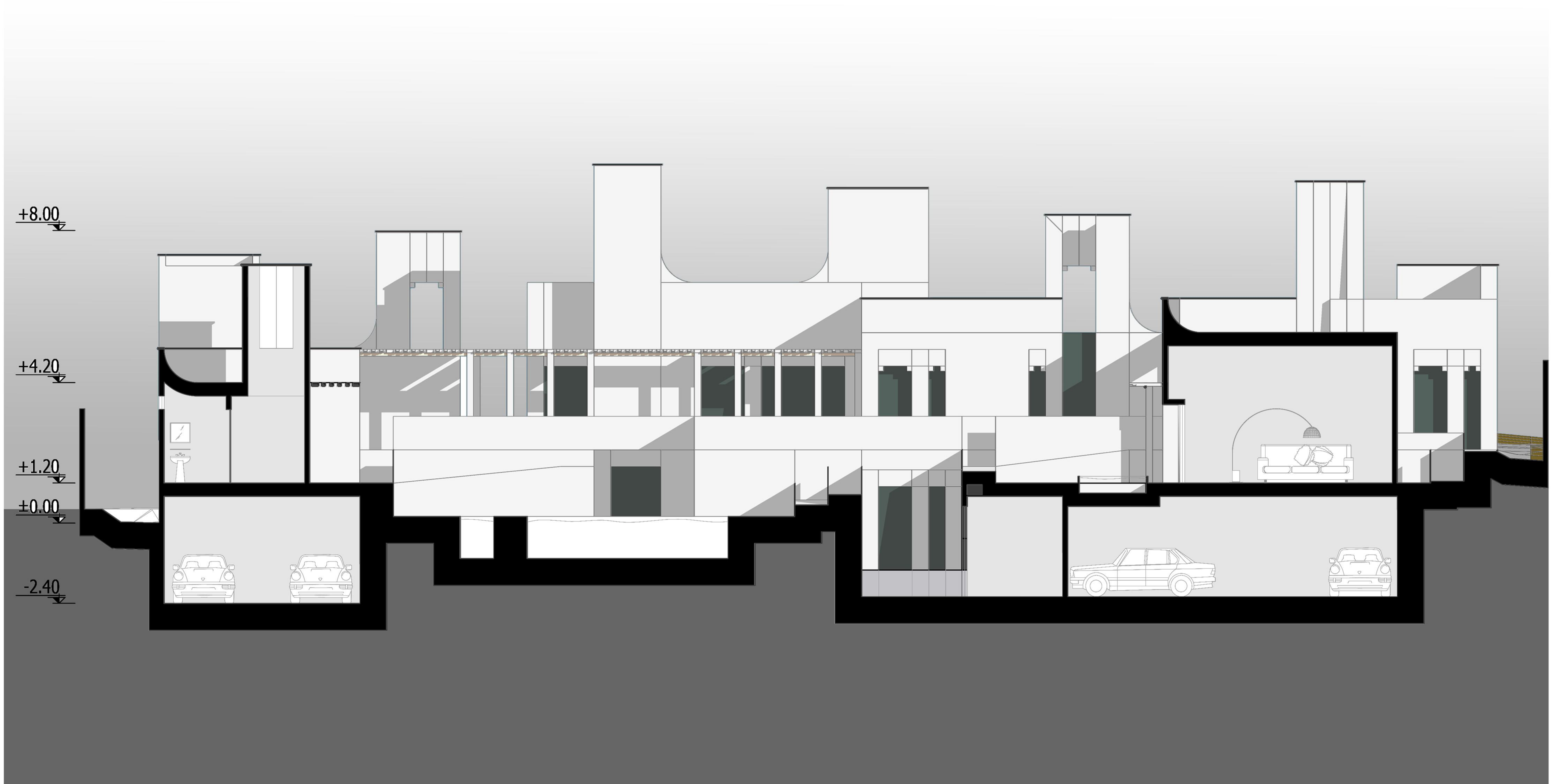


North Elevation

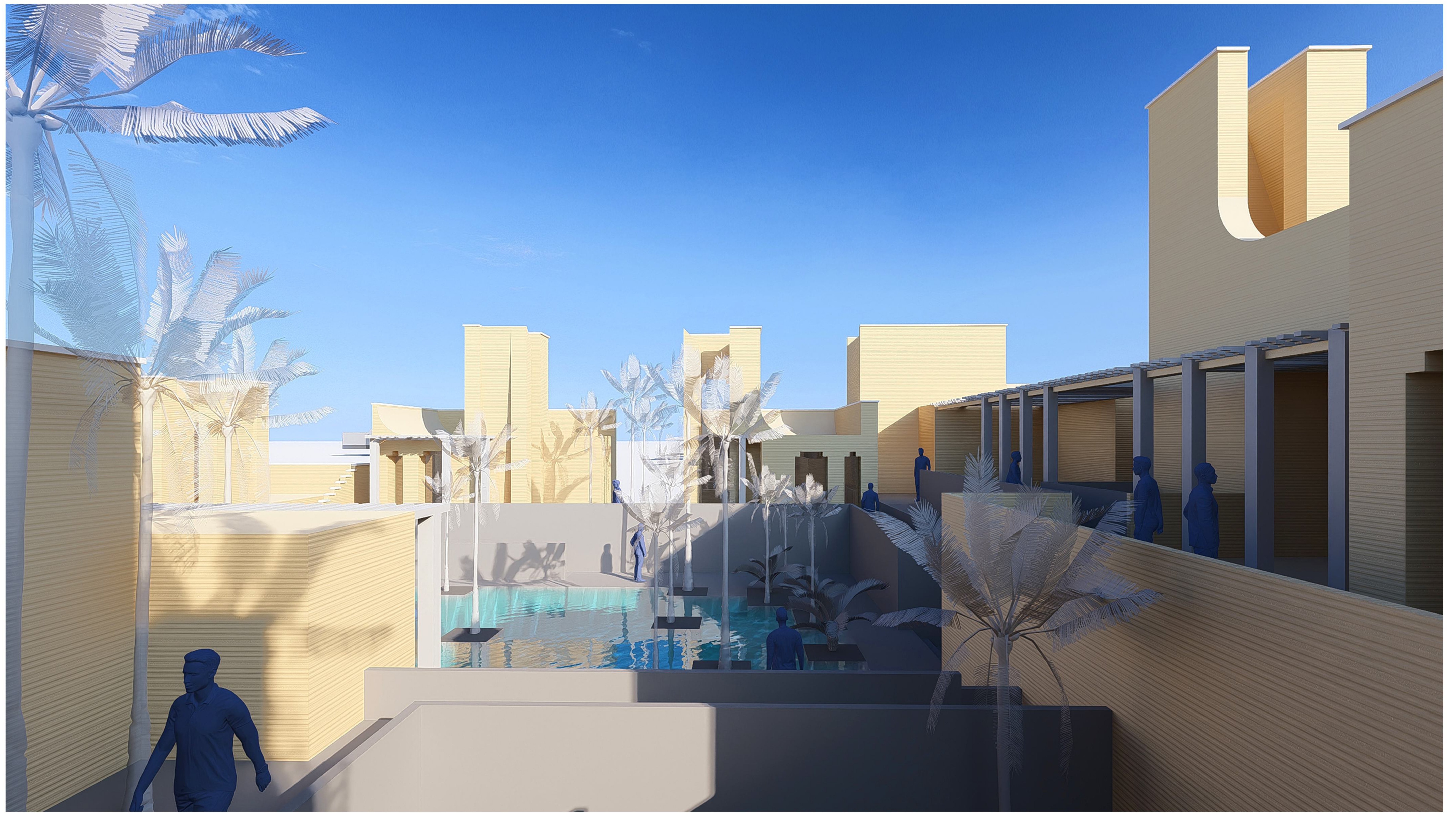


South Elevation





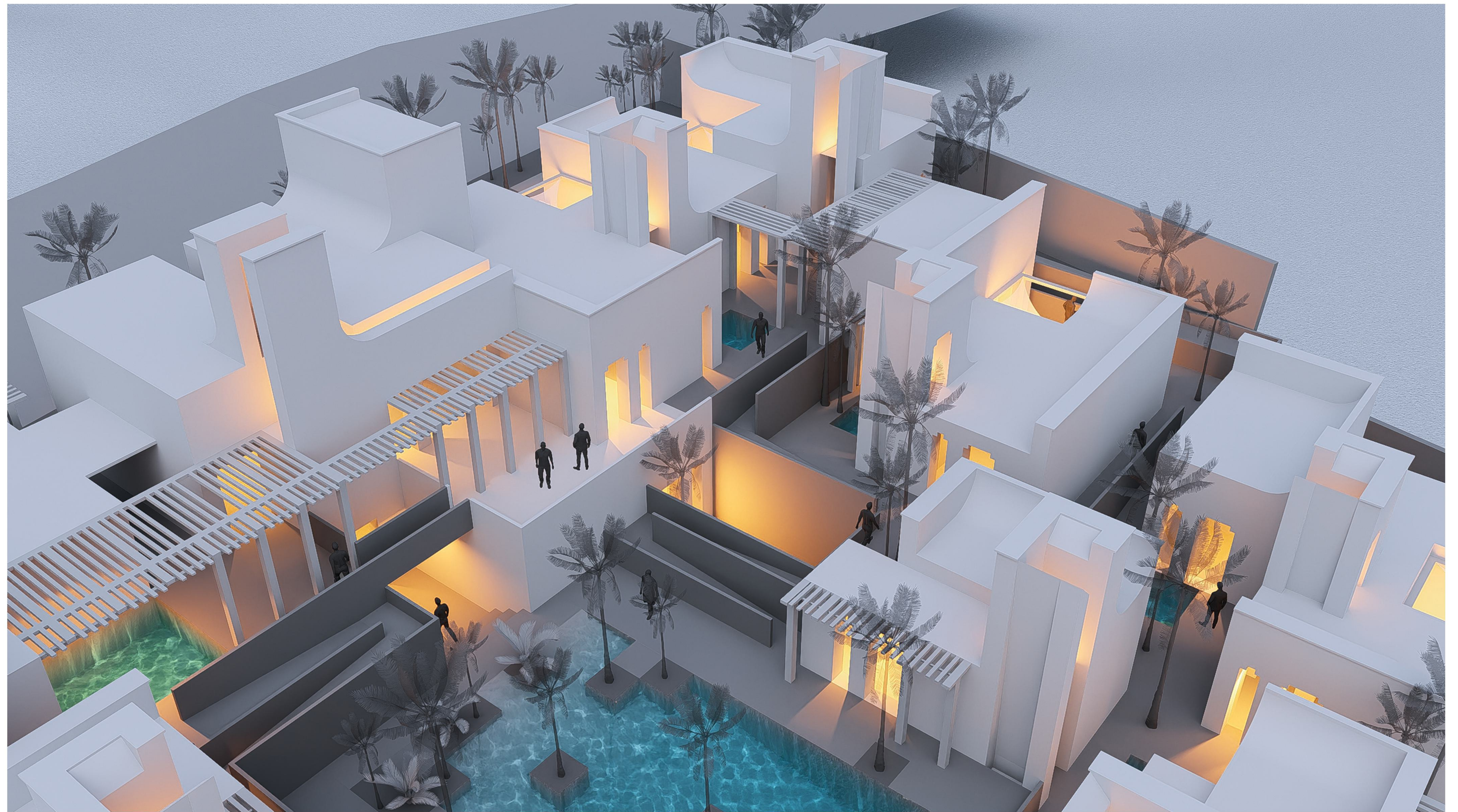
0 5 - S I M U L A T I O N





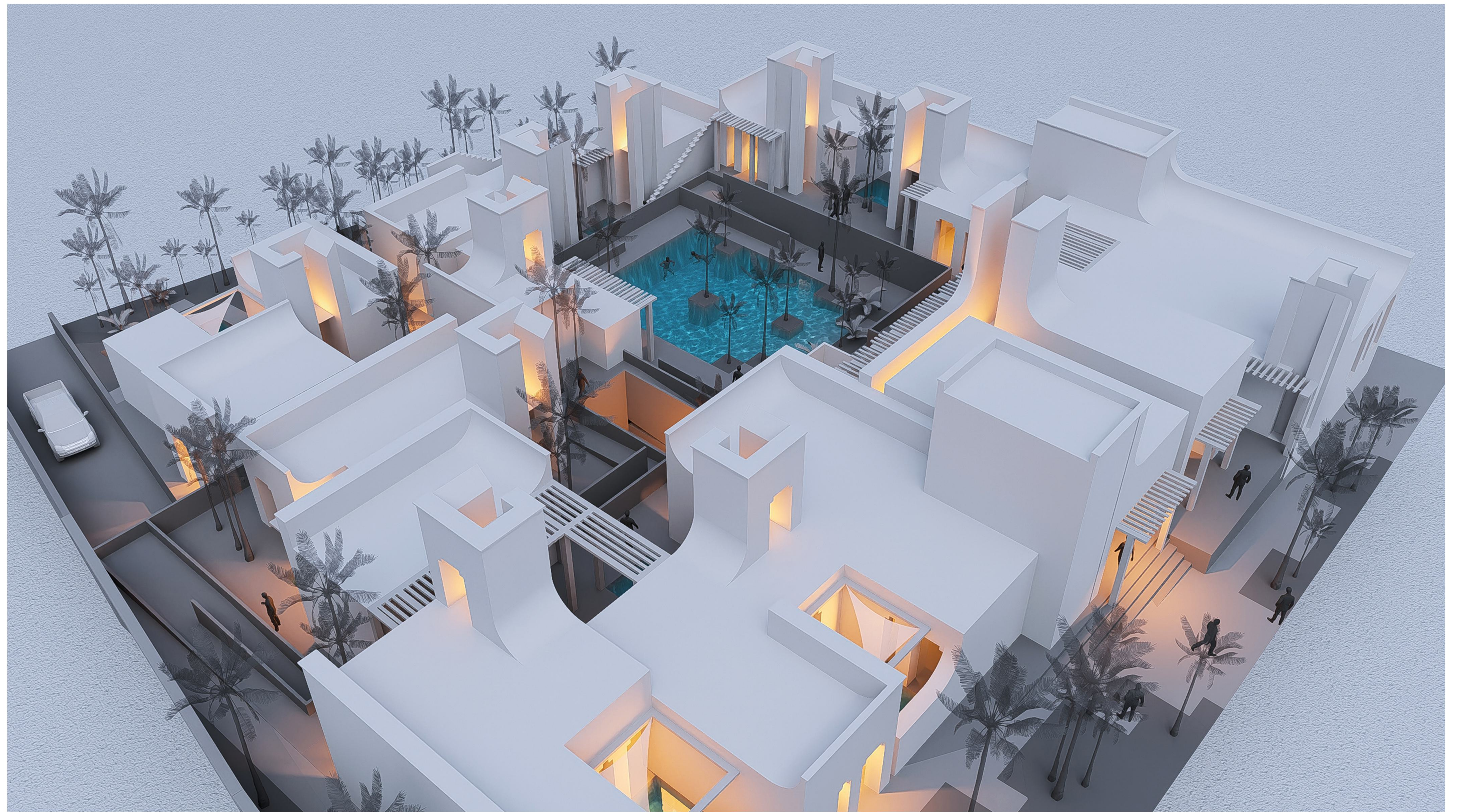






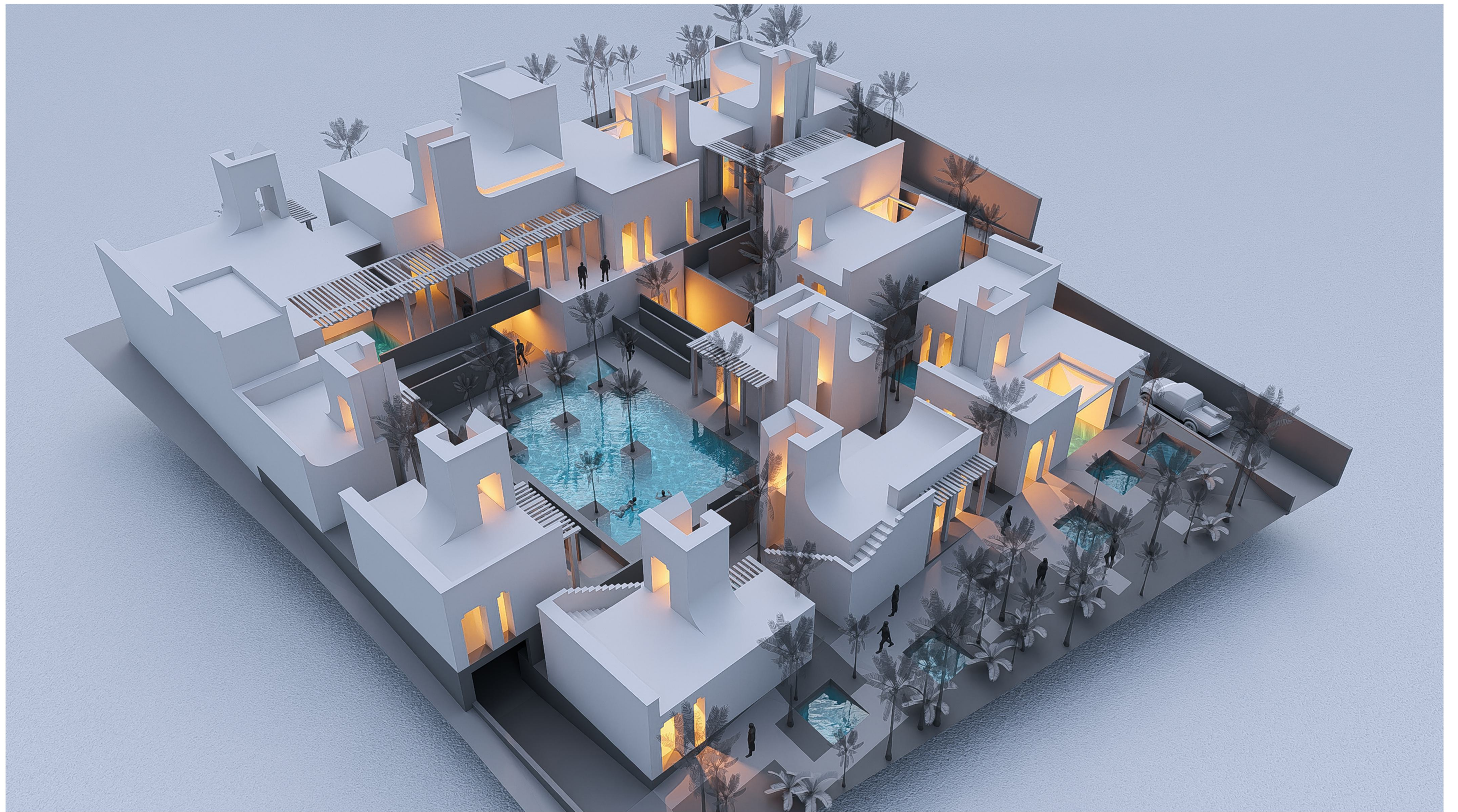


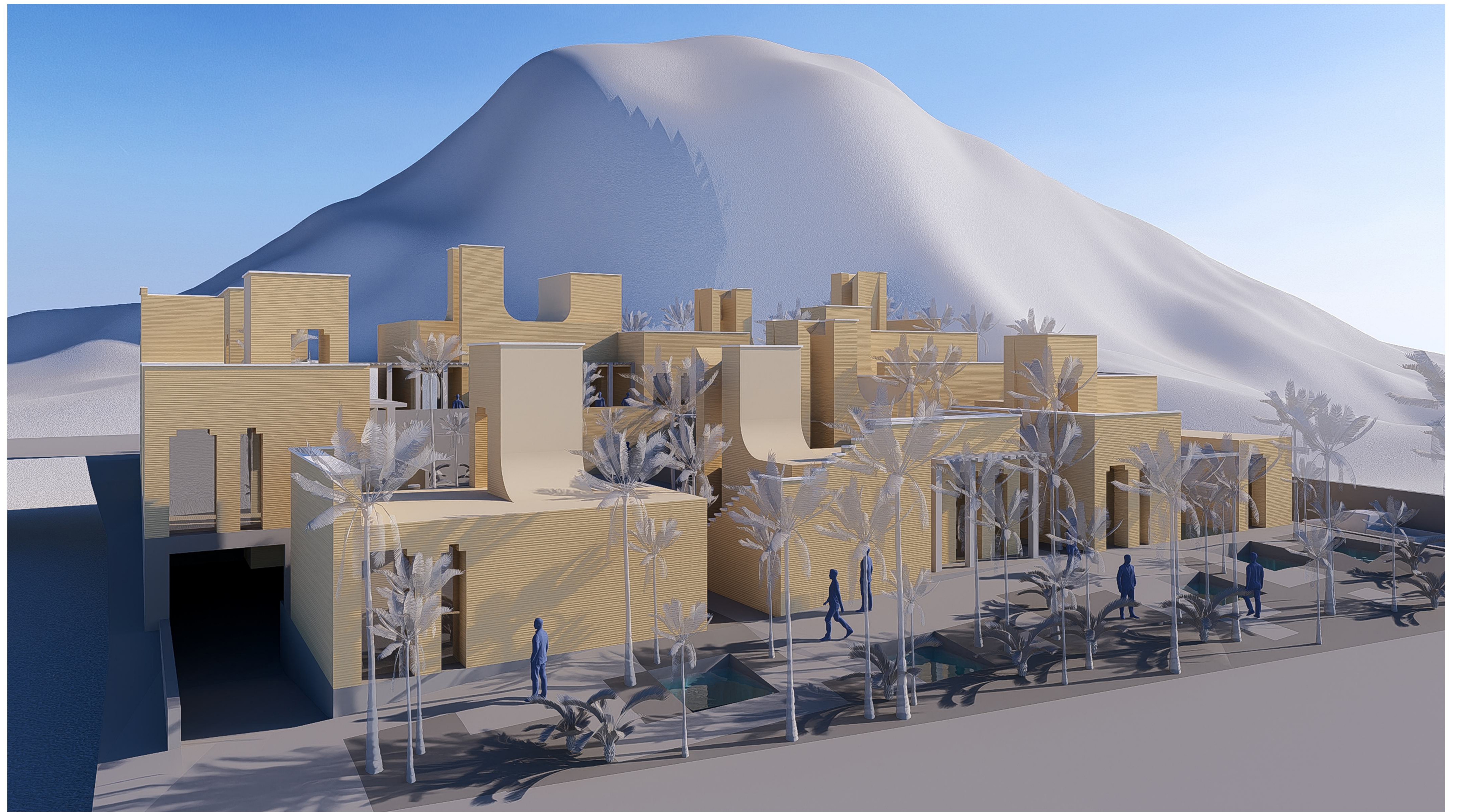








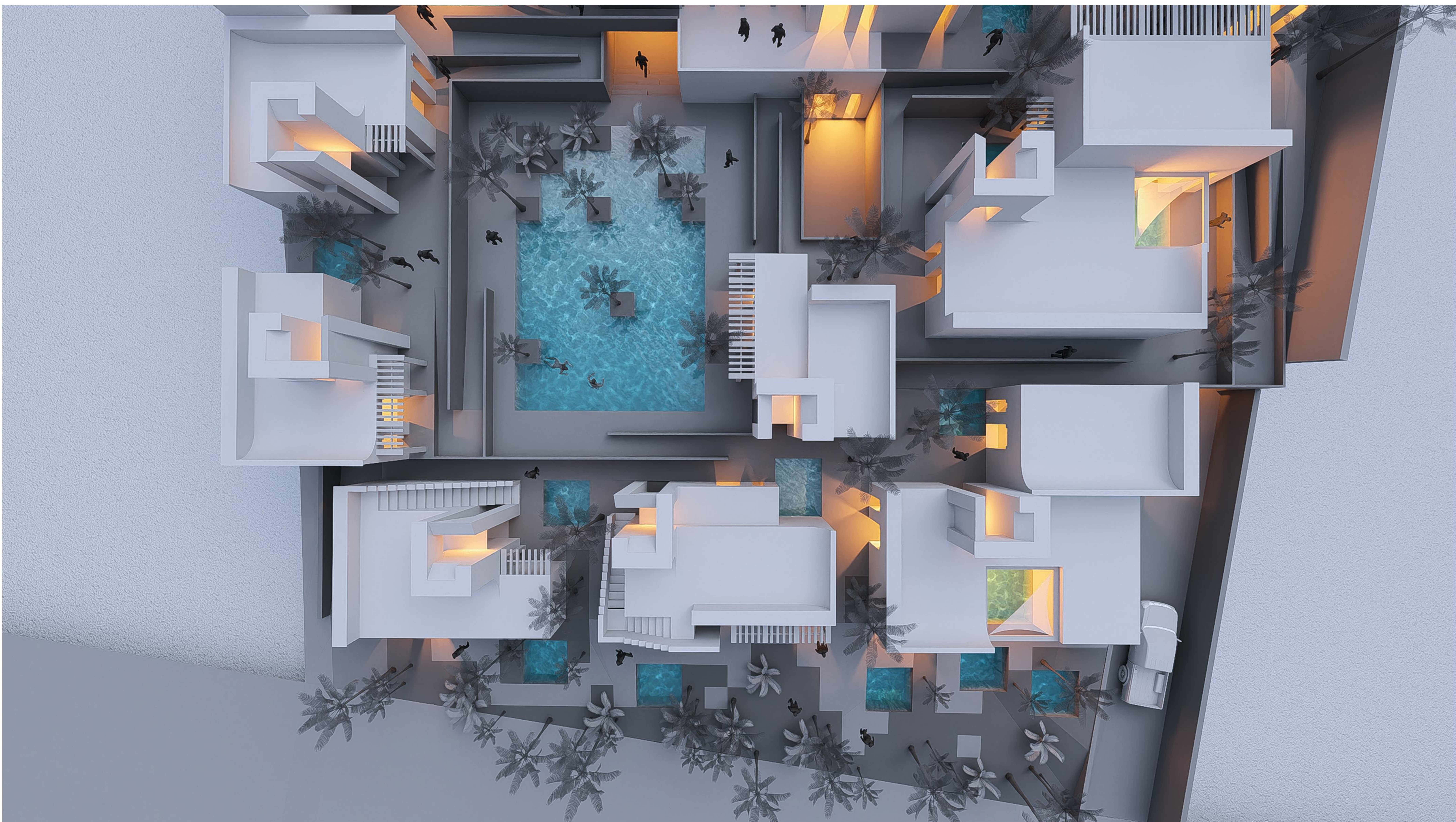














T H A N K S
F O O U R
Y A T T E N T I O N

S O H E I L Y - V I L L A G E - Q E S H M - I R A N



آستوديو
معماری
نو

2025